

Recurrent cardio-embolic stroke

Ted Feldman, M.D., FSCAI FACC FESC

Evanston Hospital

18th ANGIOPLASTY SUMMIT

TCTAP 2013

April 23rd-26th, 2013

Seoul, Korea

Ted Feldman MD, FACC, FESC, FSCAI

Disclosure Information

The following relationships exist:

Grant support: Abbott, BSC,
Edwards, St Jude, WL Gore

Consultant: Abbott, BSC, Coherex, Edwards, Intervale,
Diiachi Sankyo-Lilly, WL Gore

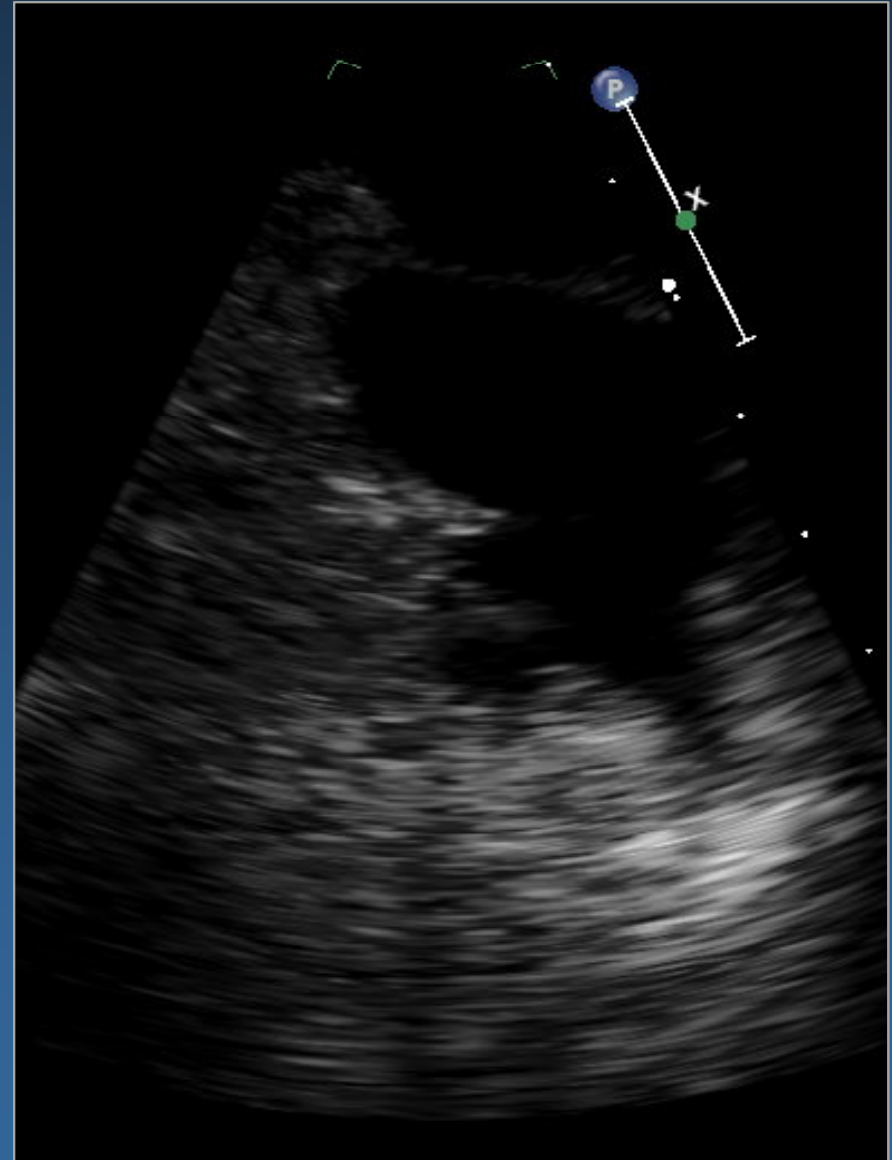
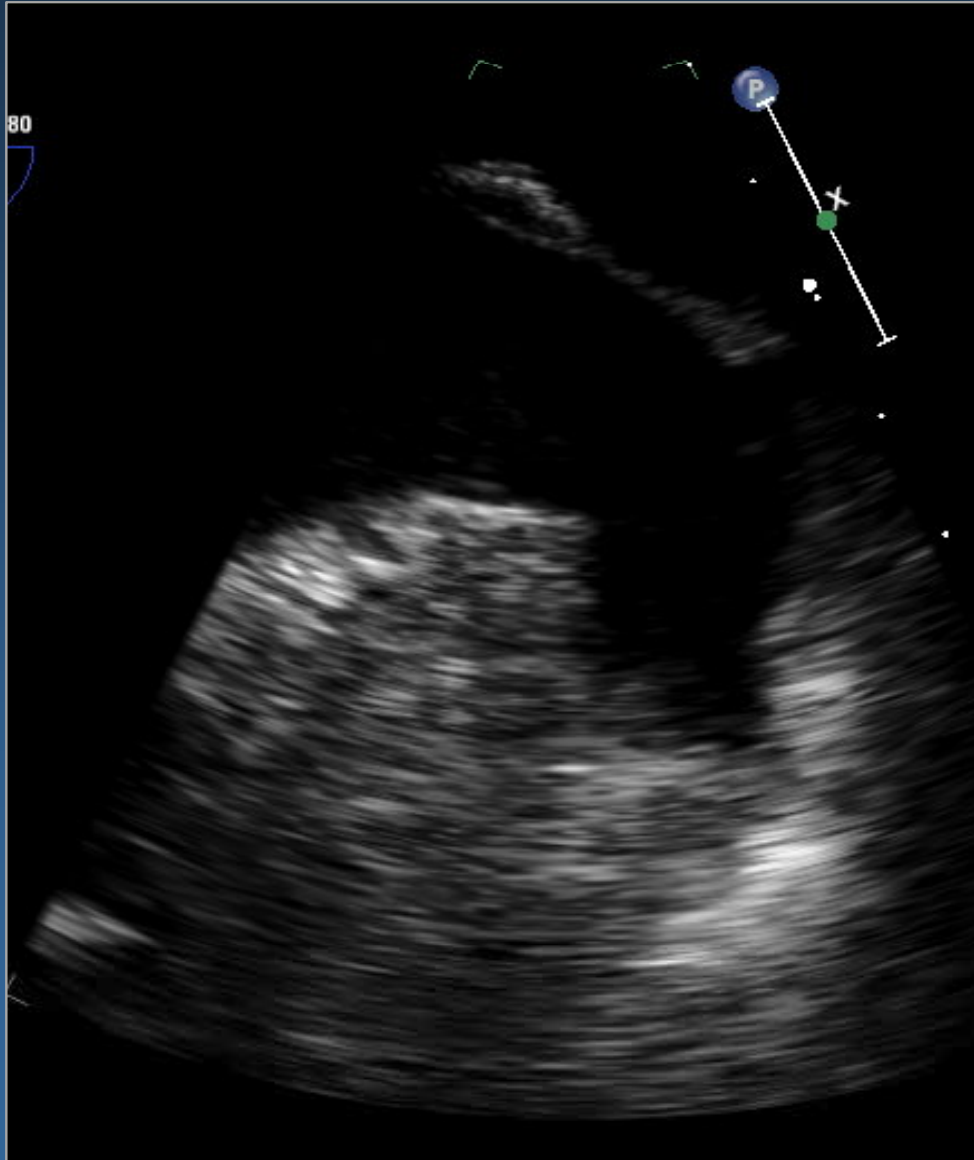
Speaker: Boston Scientific

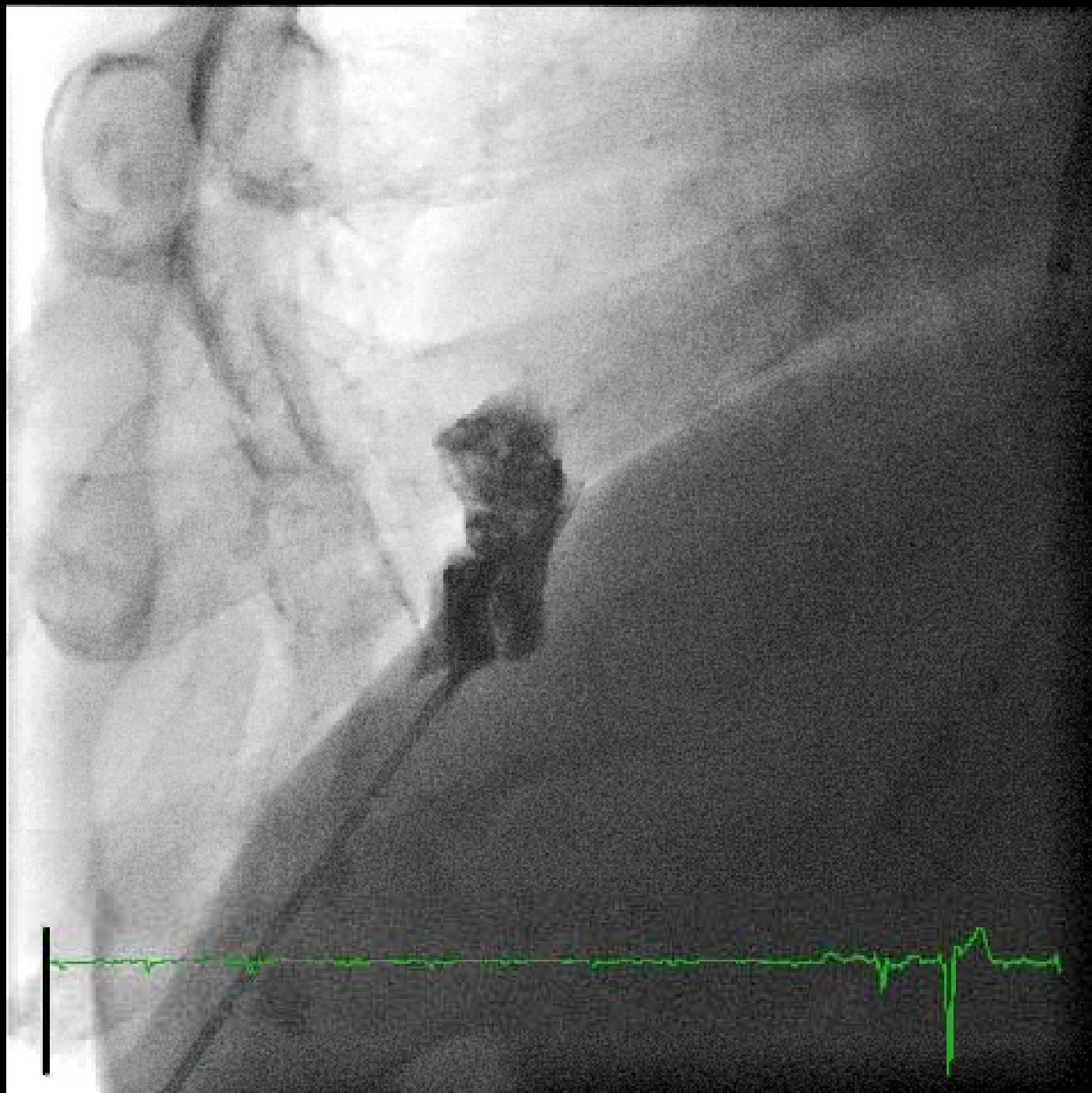
*Off label use of products and investigational devices
will be discussed in this presentation*

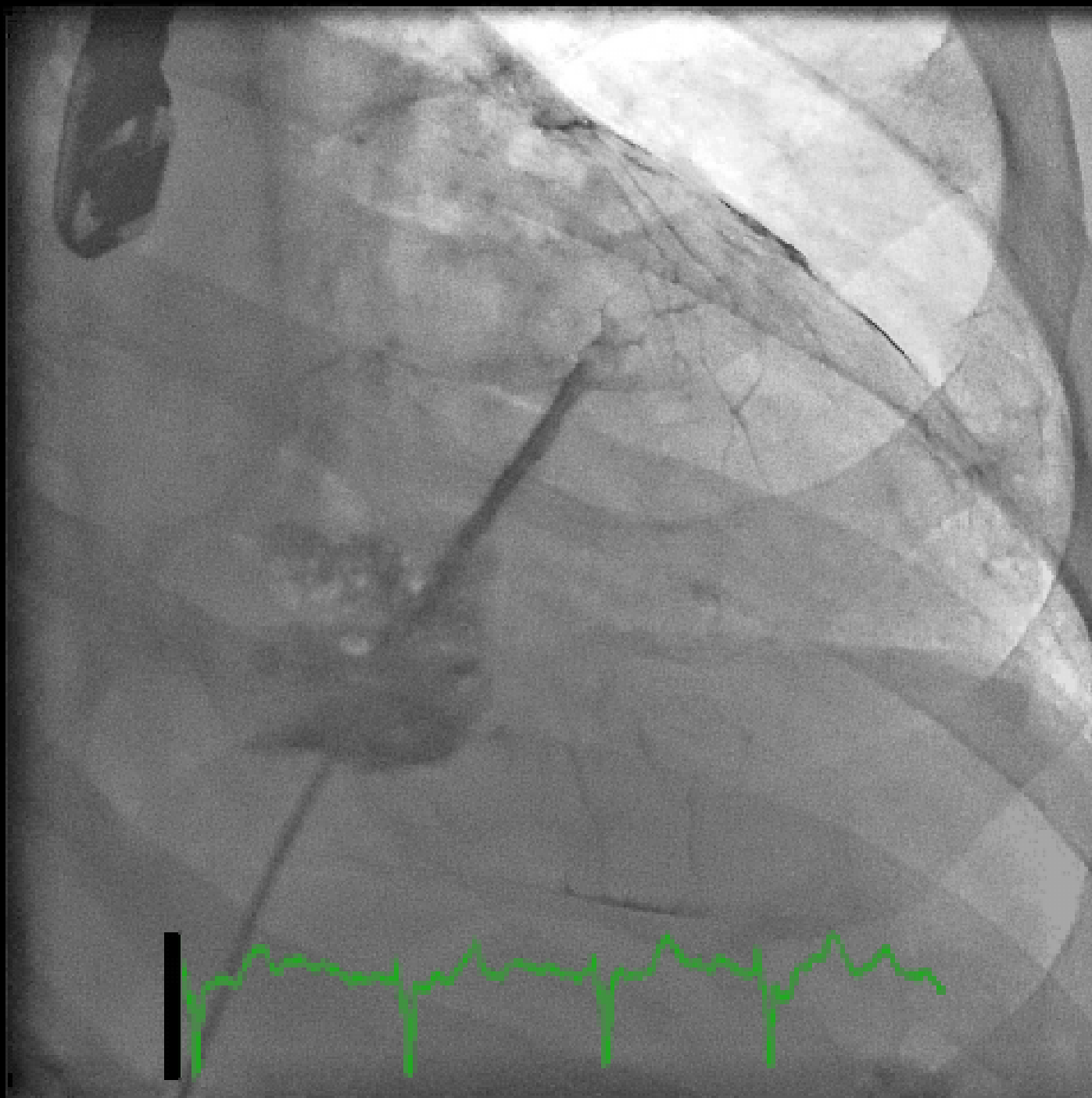
Recurrent stroke on anti-coagulation

- 79M with AF since the early 1990s treated with Coumadin
- 2009 left parietal stroke with aphasia
- 2012 recurrent stroke on Pradaxa - garbled speech and seizure.
 - MRI substantial focus of hemorrhage involving the anterior left temporal lobe extending into the parietal lobe and an additional area of hemorrhage in the posterior left temporal lobe
- CHADS₂
 - Age > 75 years
 - Prior stroke

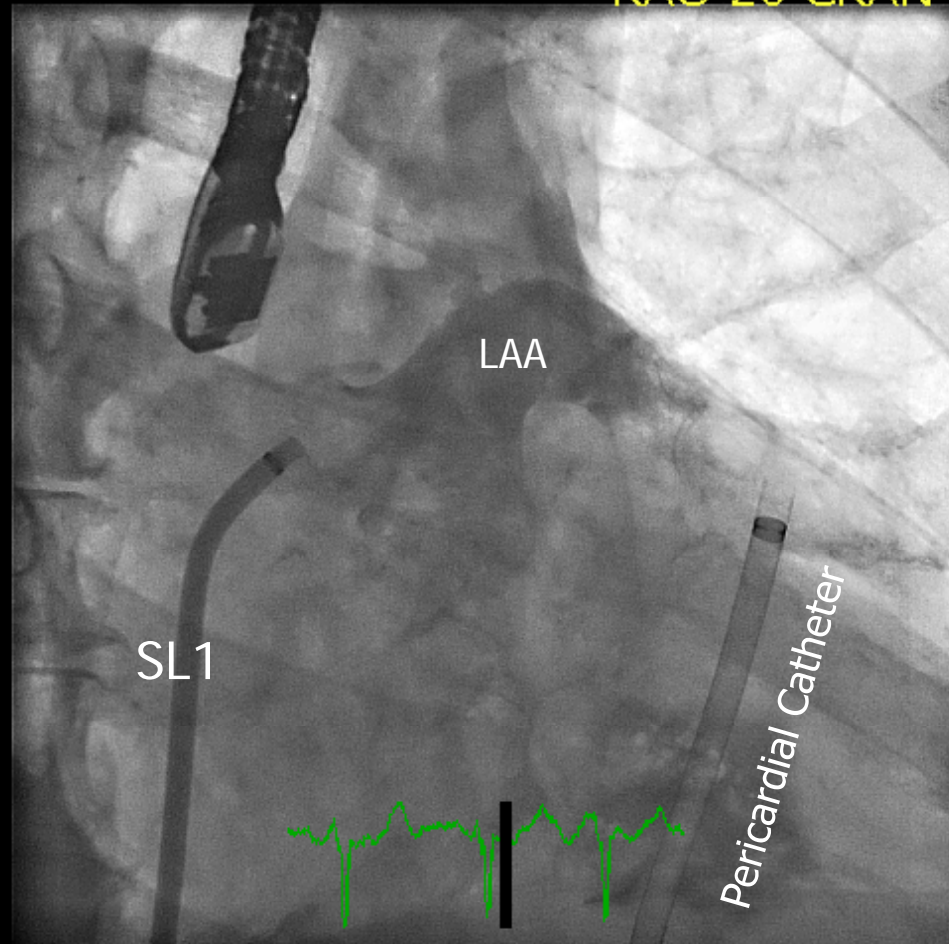
TEE LAA



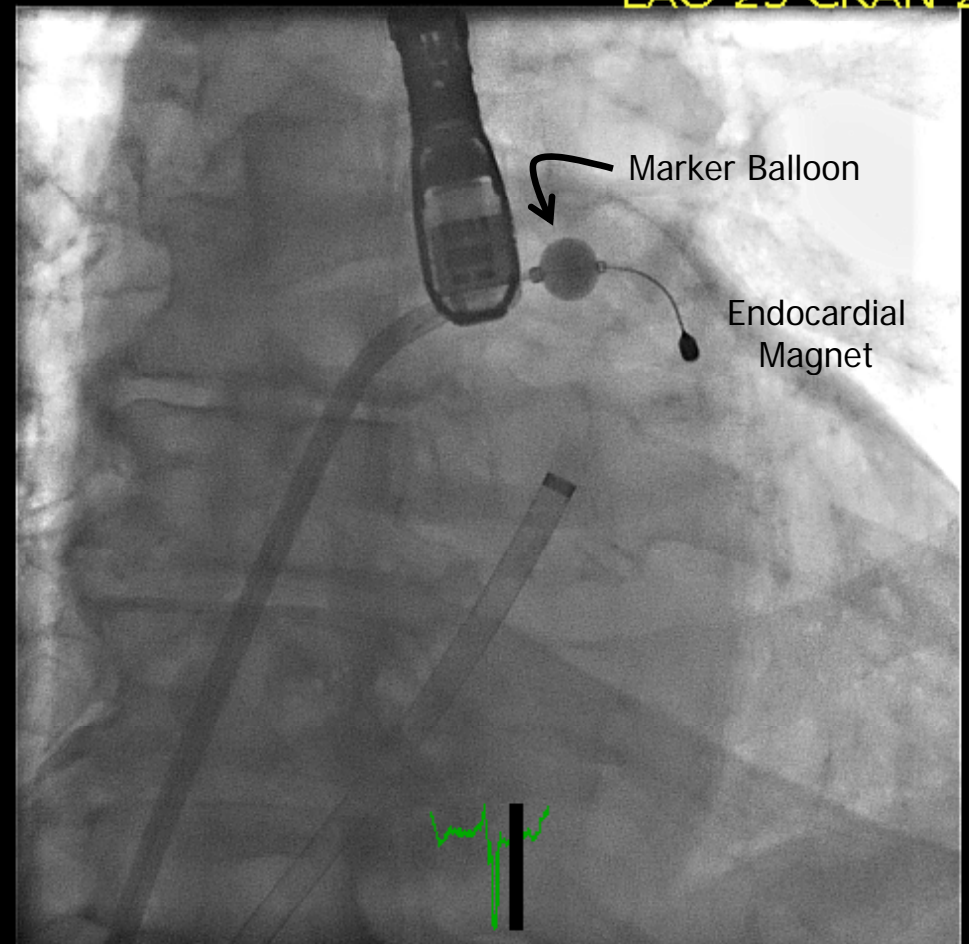


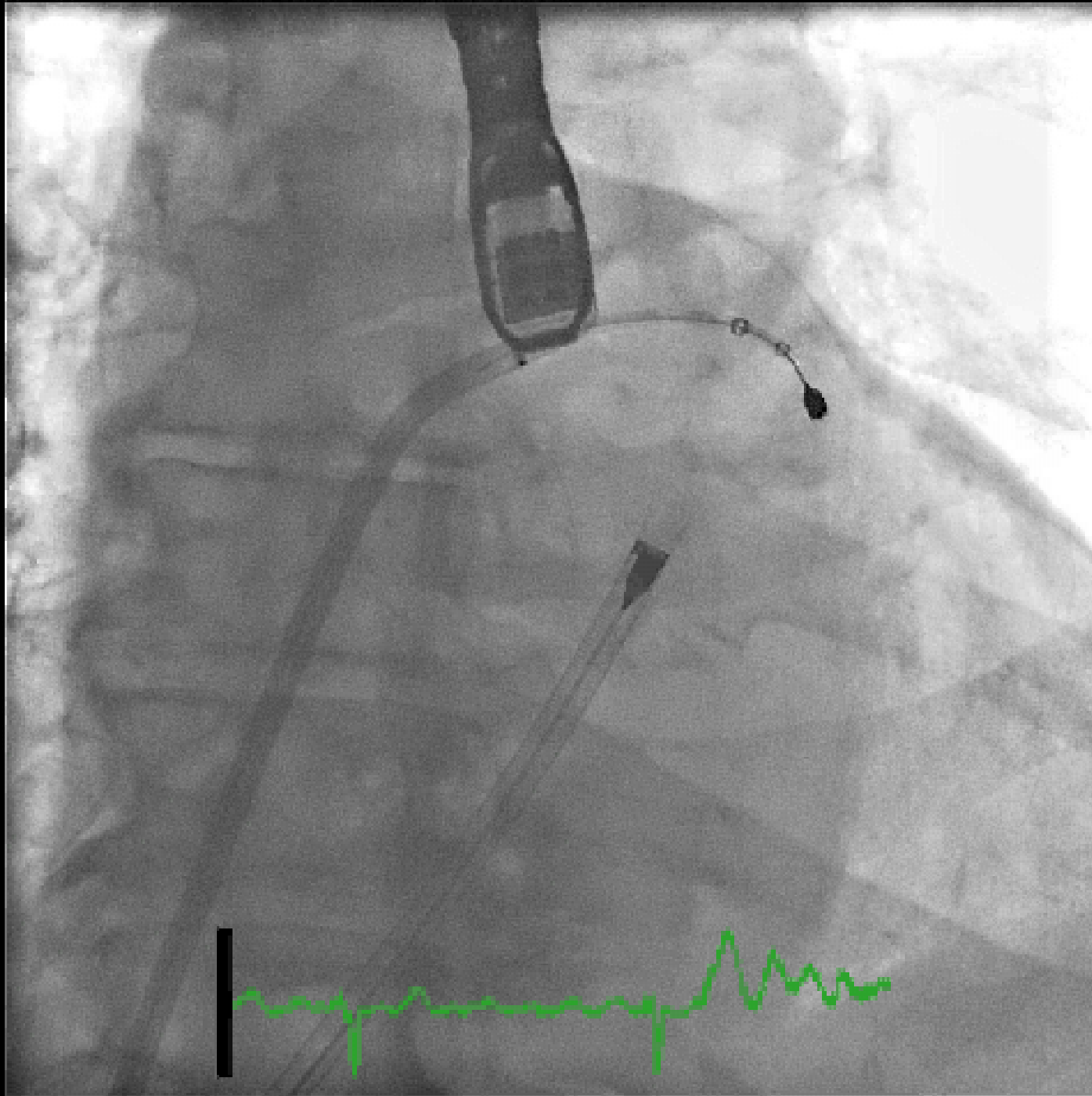


RAO 20 CRAN 2

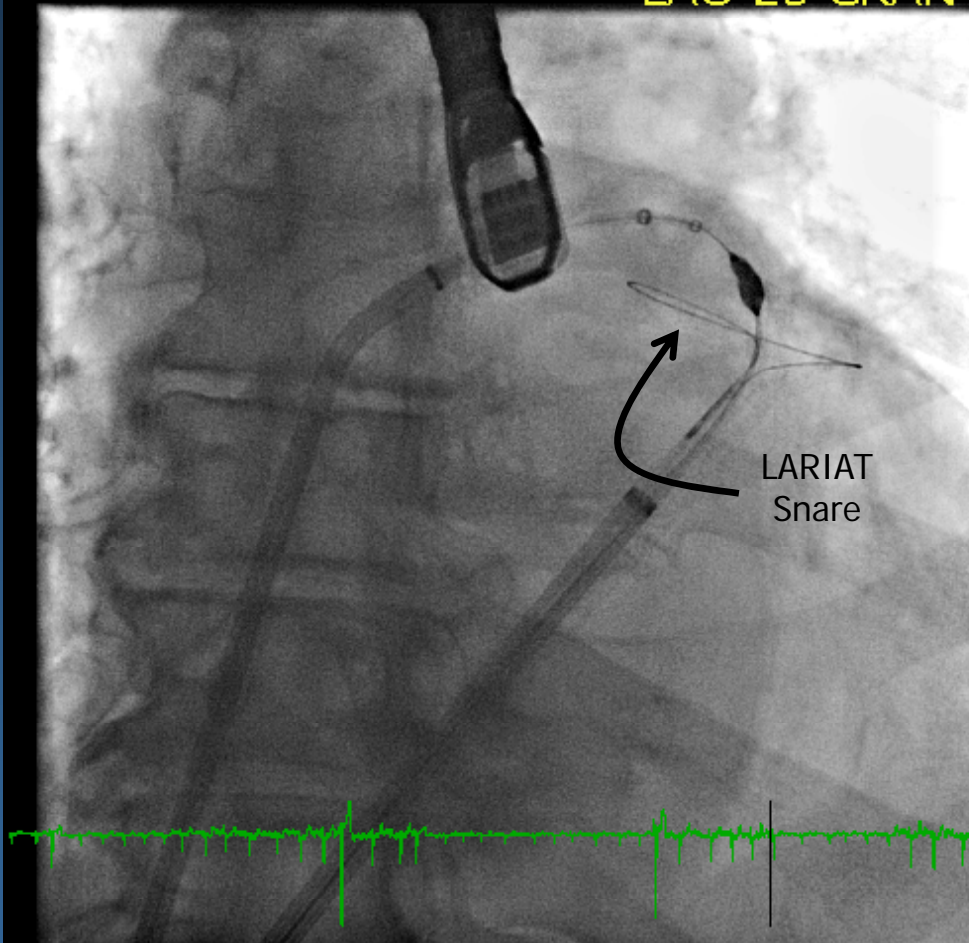


LAO 25 CRAN 2

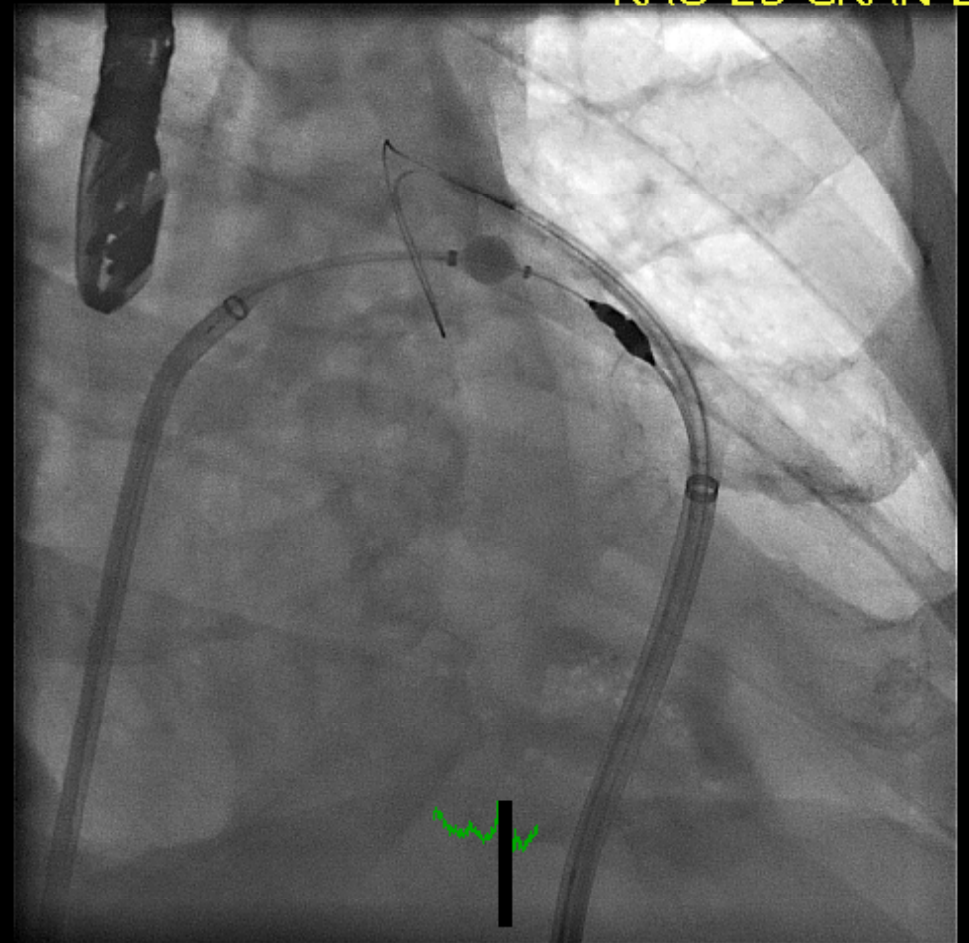


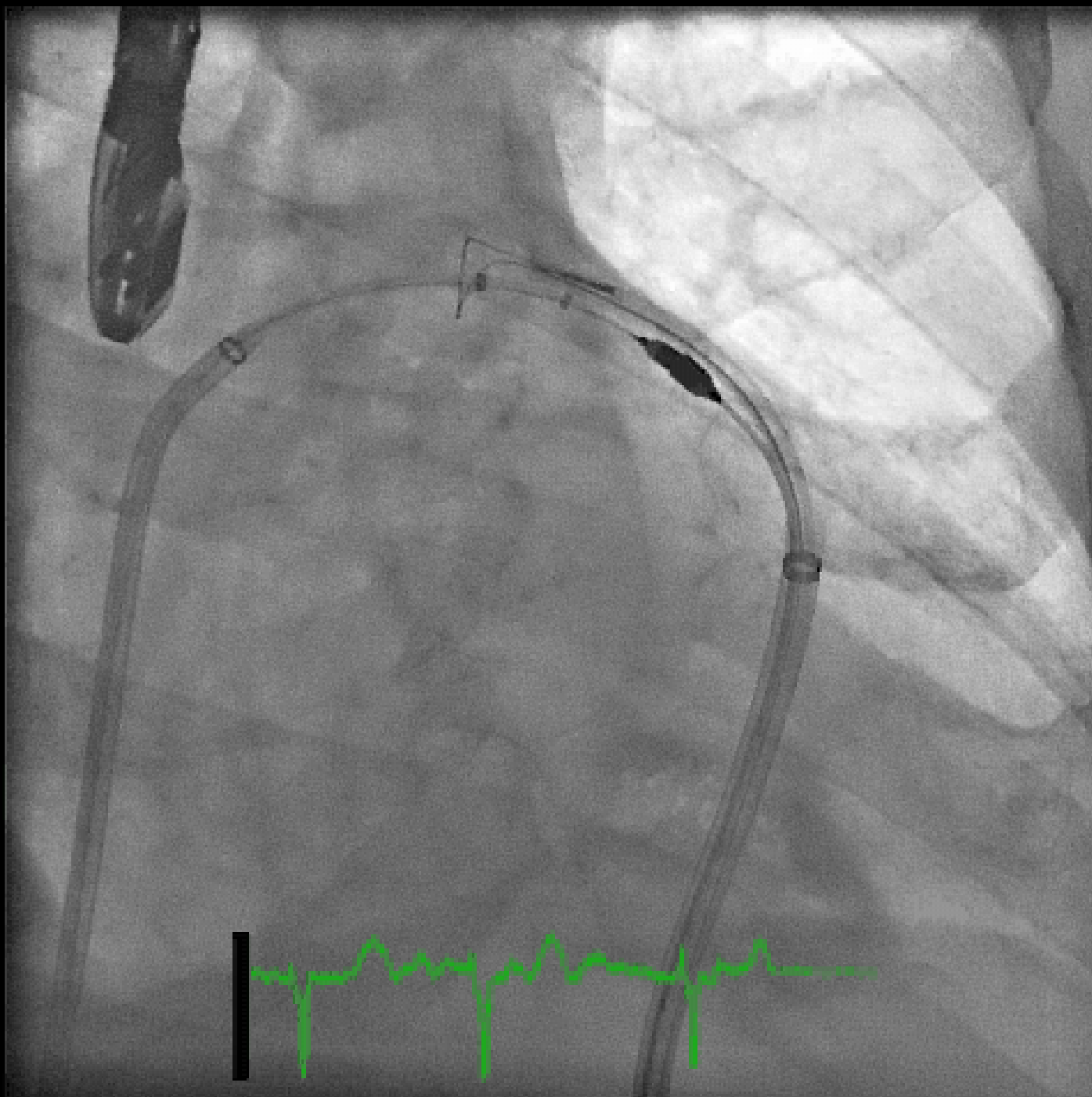


LAO 25 CRAN

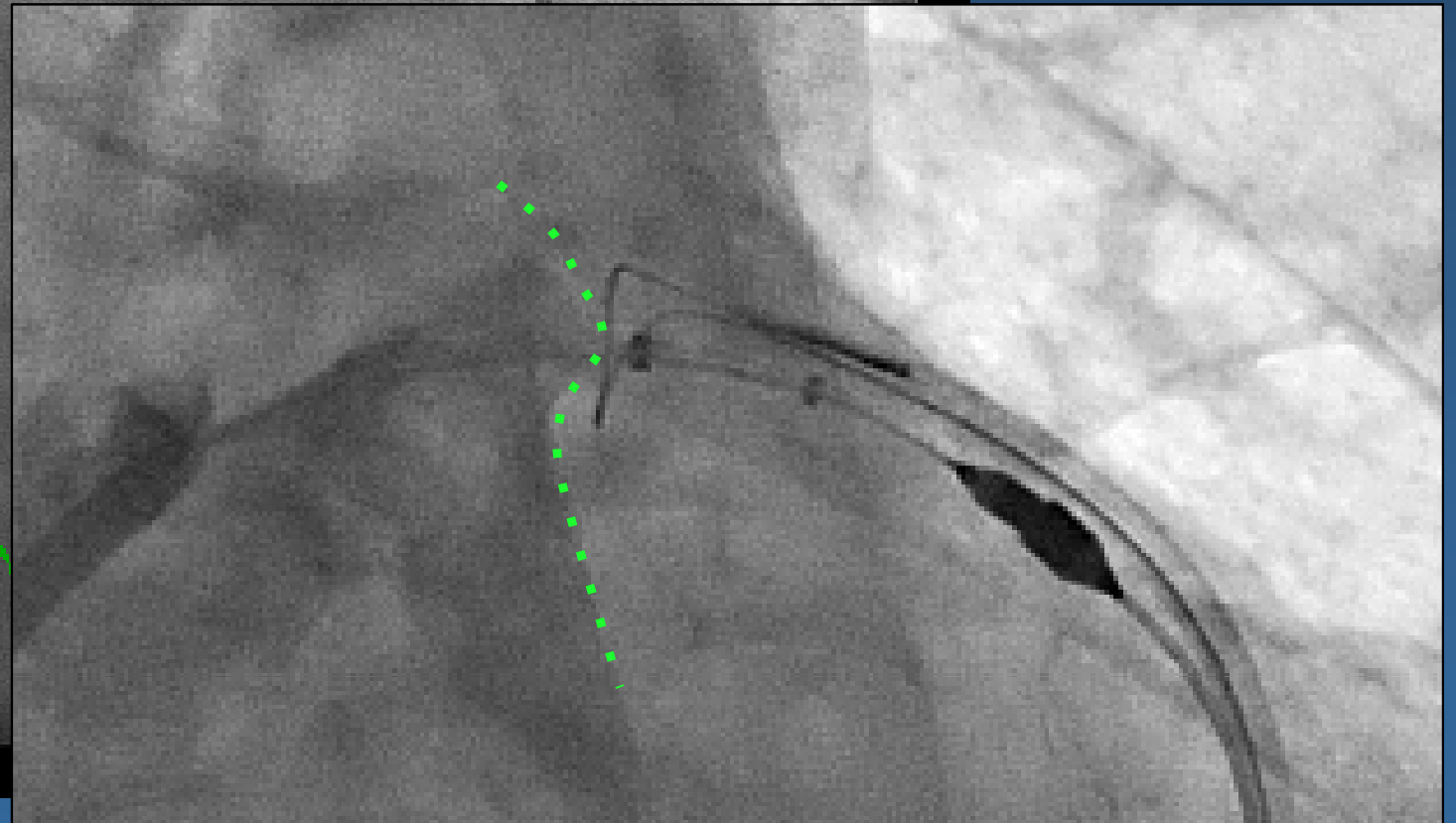
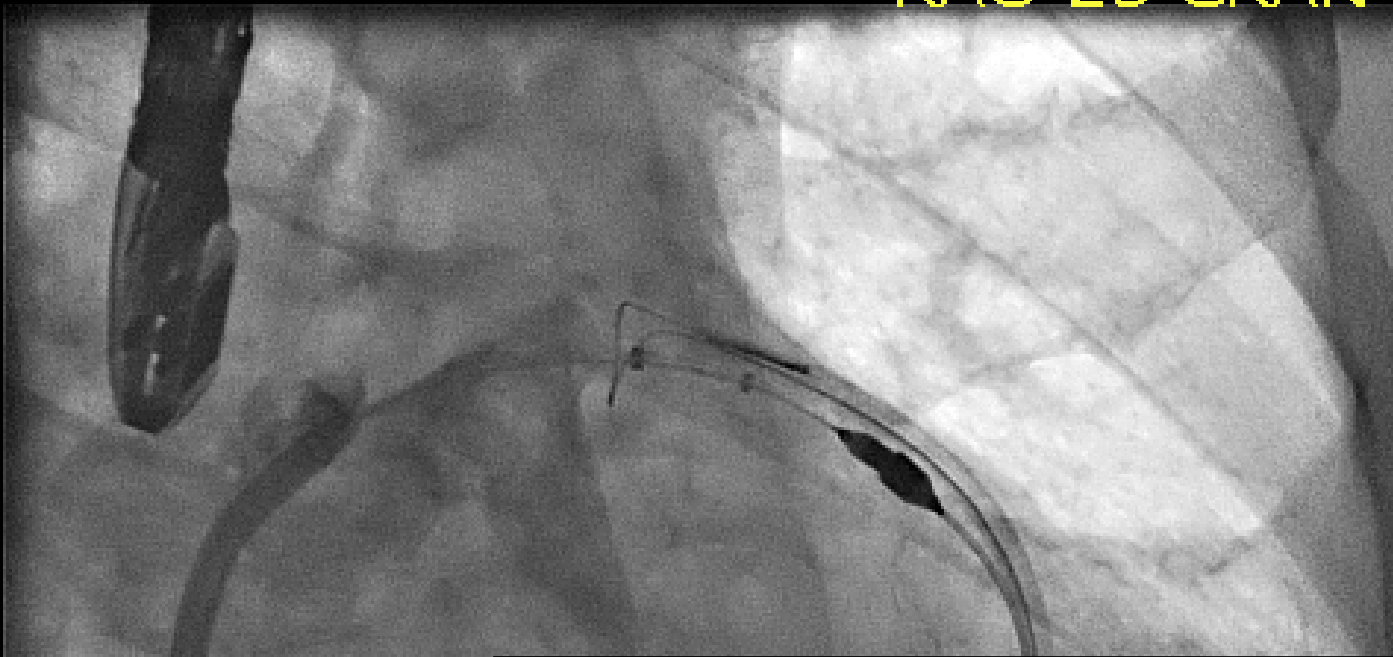


RAO 23 CRAN 2

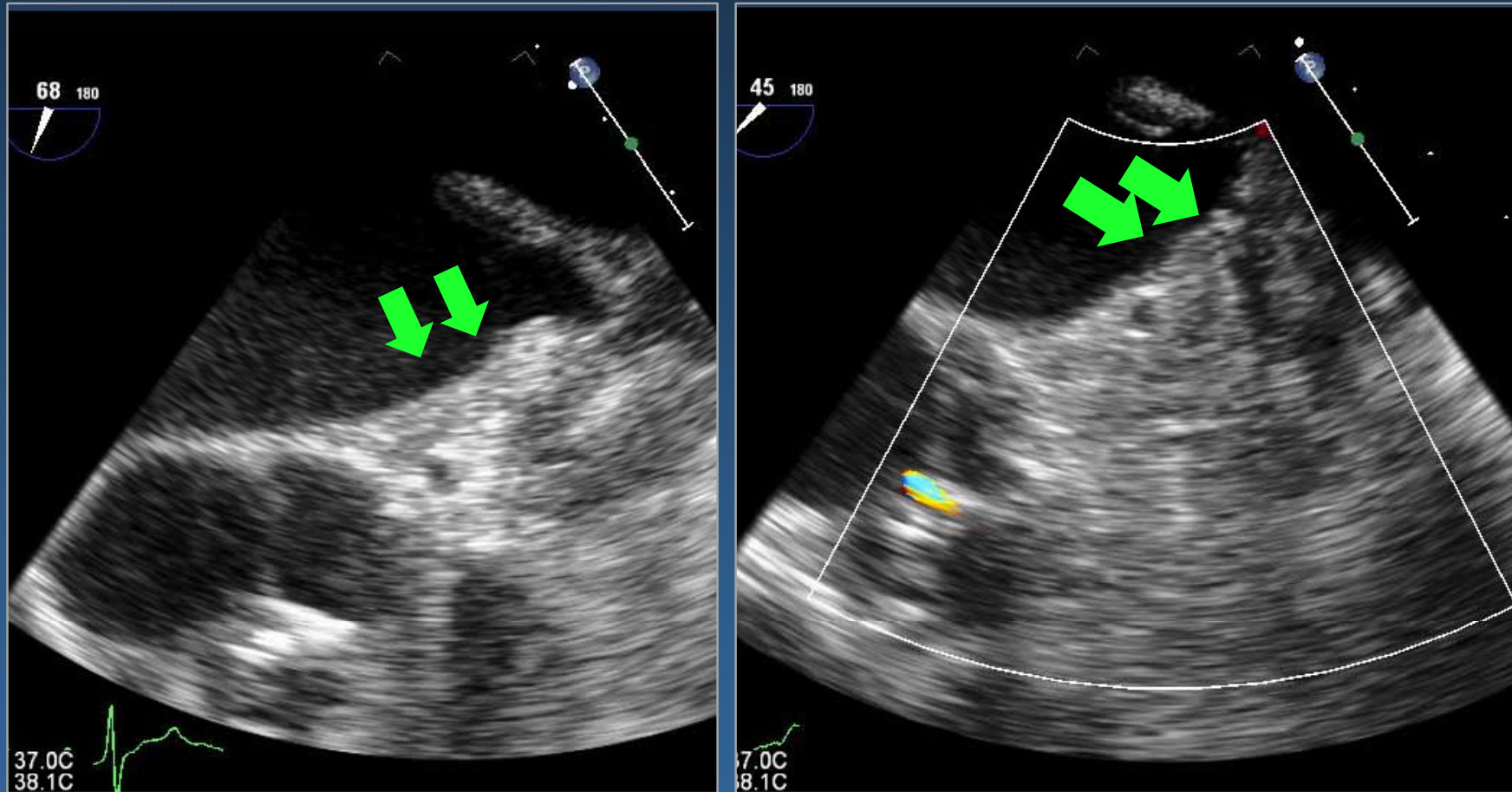




RAO 23 CRAN 2



Post LARIAT



Discharged on no aspirin or anti-coagulation

7.0cm

2D

54%

C 50

P Off

Gen

0 112 180



P



30 Day TEE

JPEG

86 bpm

PAT T: 37.0C
TEE T: 37.3C

FR 60Hz
6.8cm

M4

2D
64%
C 50
P Off
Gen



One month dabigatran

PLAX



JPEG

85 bpm