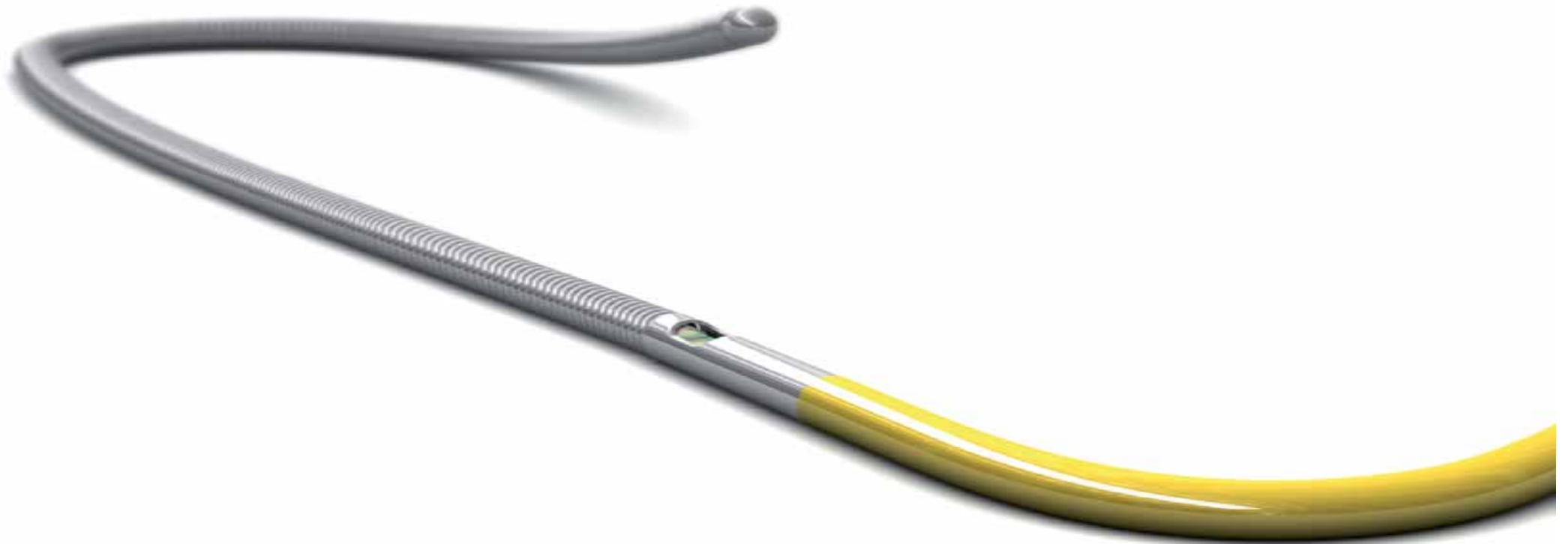


Pressure Wire 사용과 보험 청구 사례 Review



" " () 2013 - 69 , 2013.5.1.

● (FFR)

1. Fractional Flow Reserve) (FFR:
(PCI)



가. 2.5mm

(QCA:Quantitative Coronary Angiography)

50 70% (intermediate)

(1)

(2)

가

(3)

(bifurcation lesion) 가 (main branch)

가 (side branch, 2.5mm)

가

2.

(guiding catheter 1 , Y-
connector 1 , G-wire 1 , Introducer 1)

: 2013-69 ()

3. 가 : 871,850

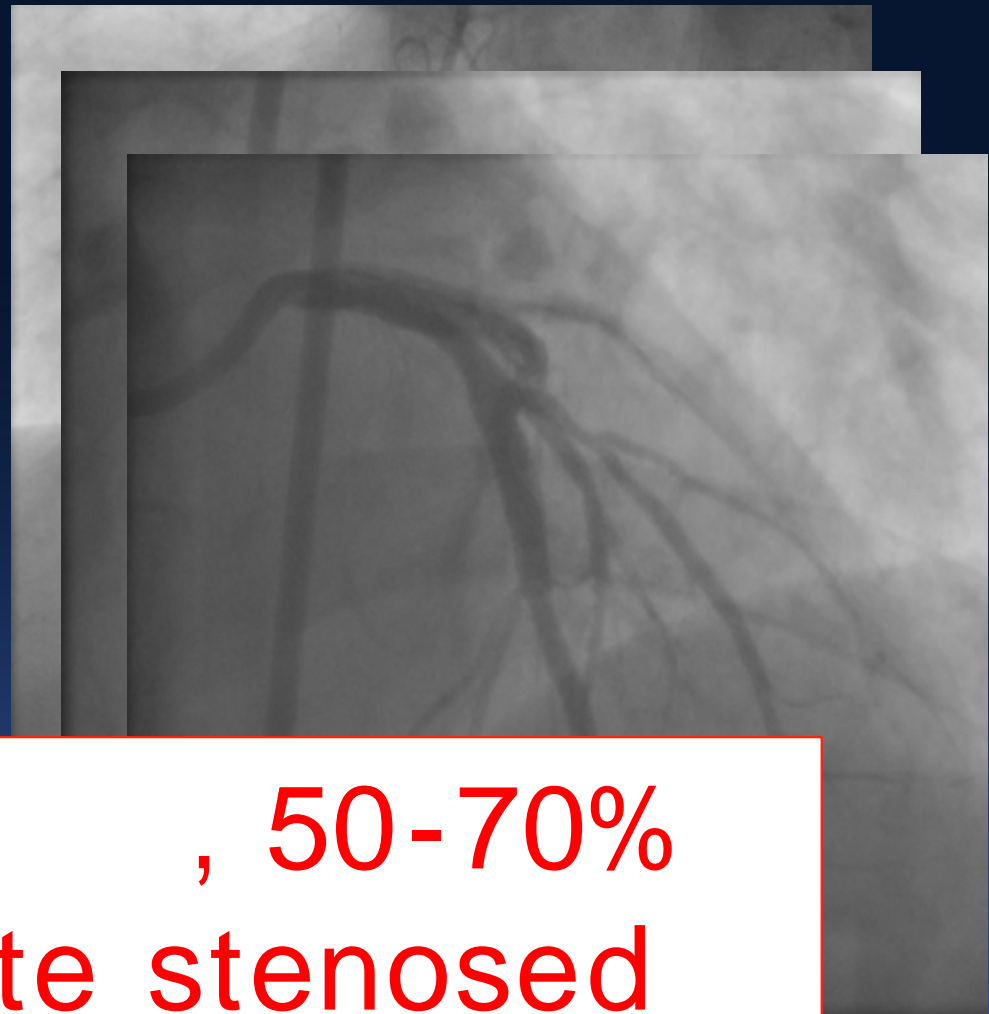
Contents

-
-
-
- (bifurcation lesion)
(main branch)
가 (side branch, 2.5mm
) 가

Contents

-
- 가
-
- (bifurcation lesion)
(main branch)
가 (side branch, 2.5mm
) 가

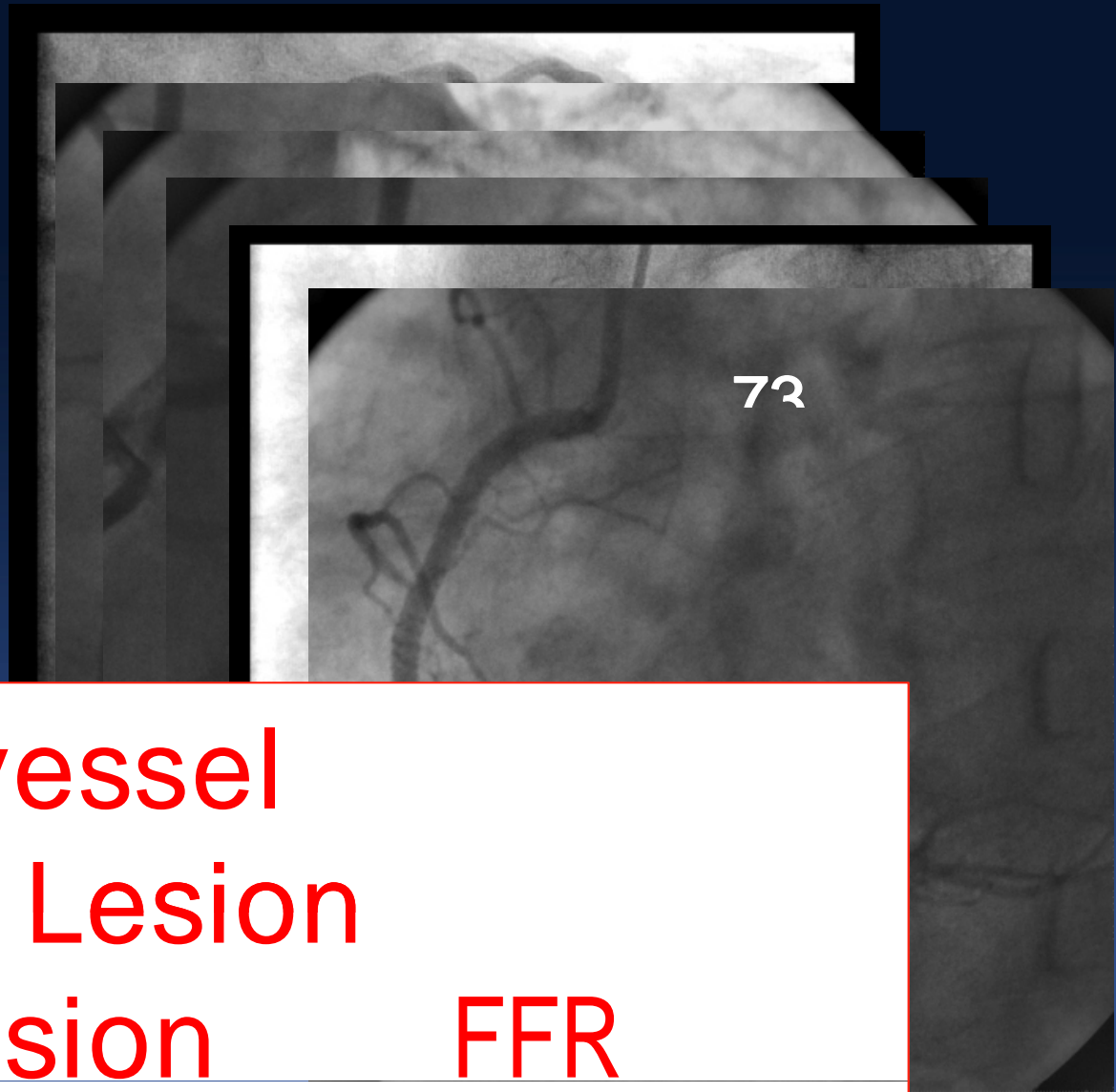
- M/55
- C.C : Chest pain (u-AP)
- TMT : Positive at Recovery stage
- CAG :
mRCA 50%
→ FFR 0.96



2 Vessel , 50-70%
intermediate stenosed
lesion FFR

⋮

- M/55
- C.C : Chest pain (s-AP)
- TMT , Thallium : not done
- CAG :
mRCA 70%



m
d

Multivessel
DS >70% Lesion
DS <50% Lesion FFR

Contents

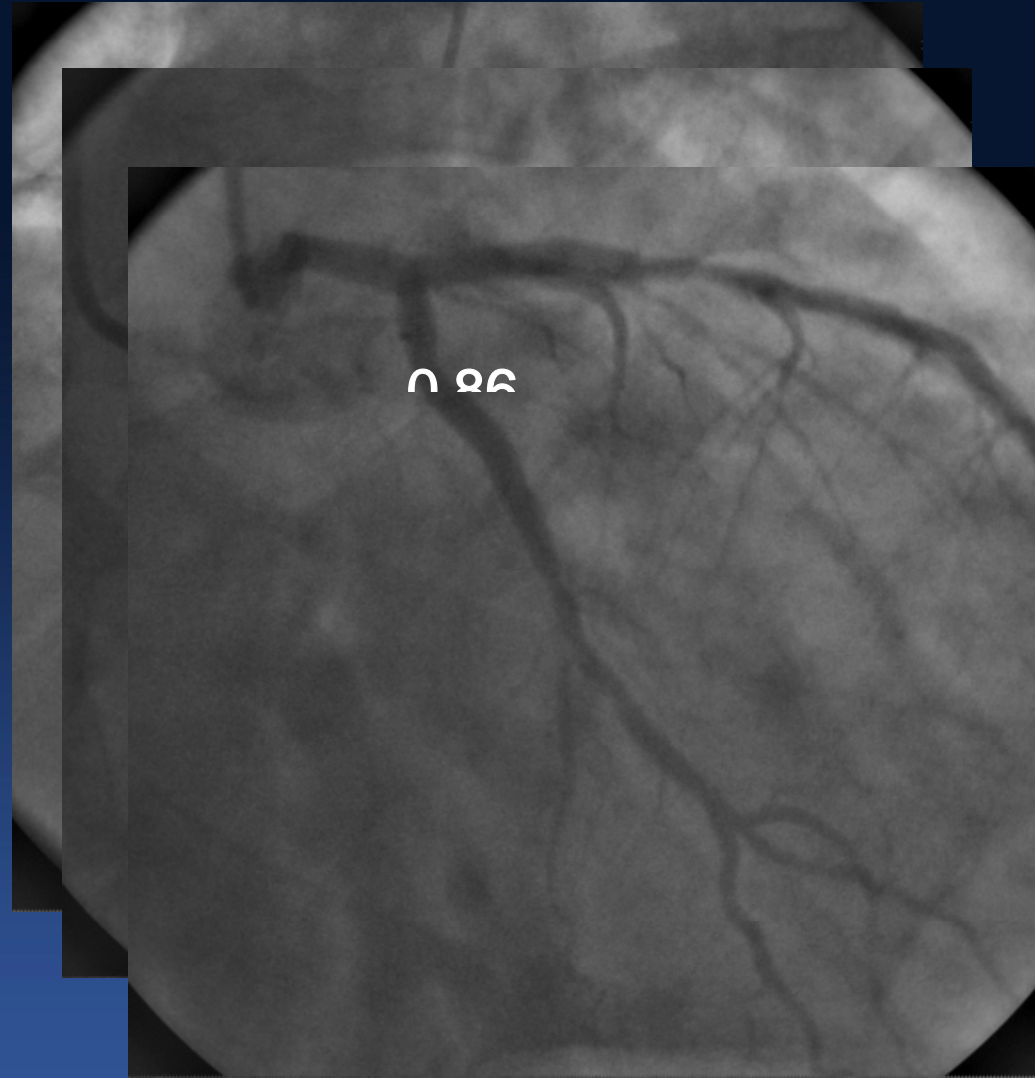


가

가) (bifurcation lesion)
(main branch)
(side branch, 2.5mm
가

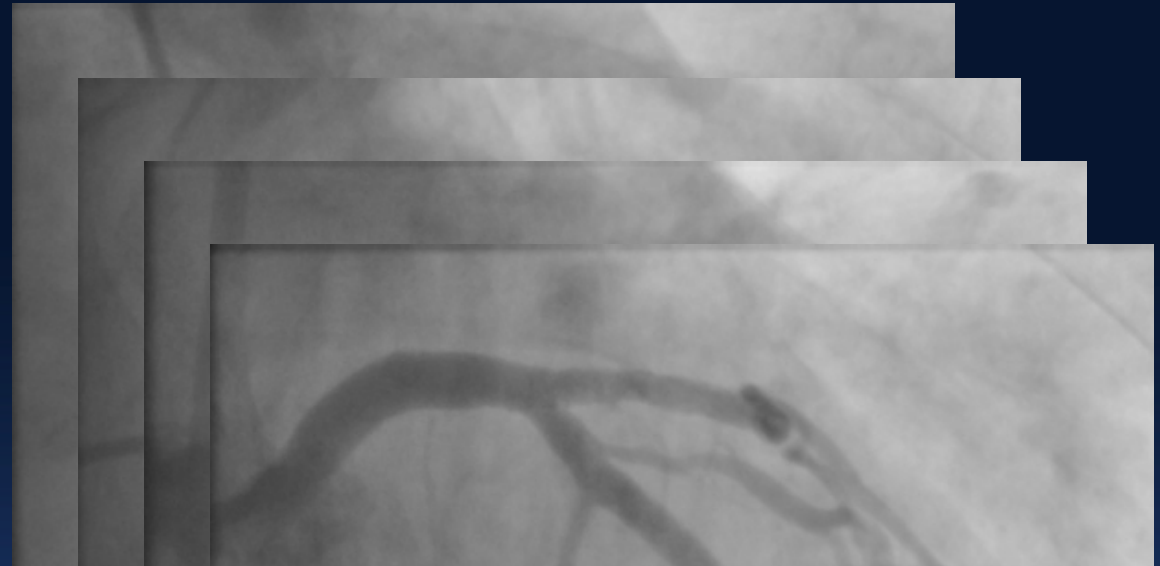
가

- M/59
- C.C : Chest pain (NSTEMI)
- TMT , Thallium : not done
- CAG :
 - pRCA 70%
->FFR 0.86
 - mLAD 60%
->FFR 0.86
 - dLCX 60%
- Rec) Medical Tx



가

- F/68
- C.C : Dyspnea
- TMT , Thallium :
not done
- CAG :
ml AD 70%



CAG
ischemia

TMT, Thallium

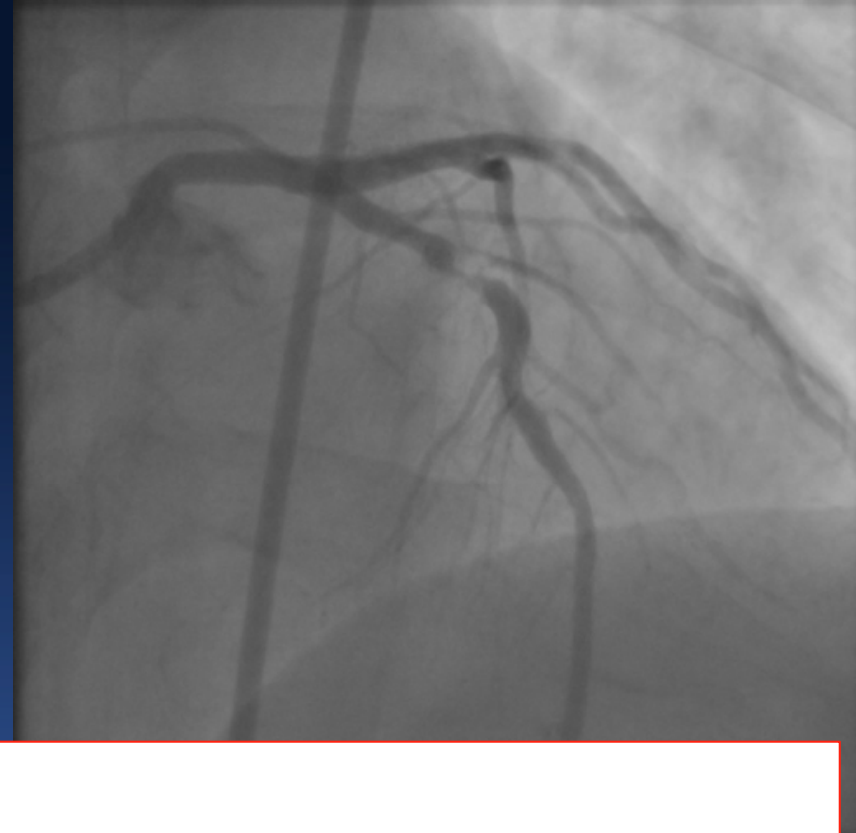
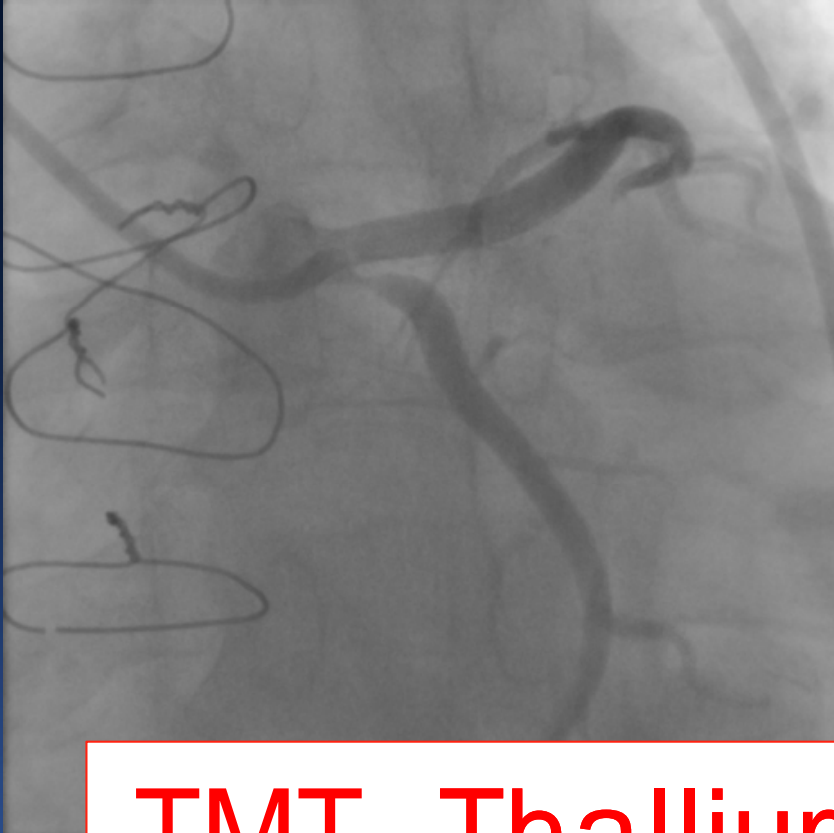
, 50-70%

intermediate stenosed lesion

FFR

가

:



TMT, Thallium

CAG+FFR

DS>70%

DS<50%

Contents



가



(bifurcation lesion)

(main branch)

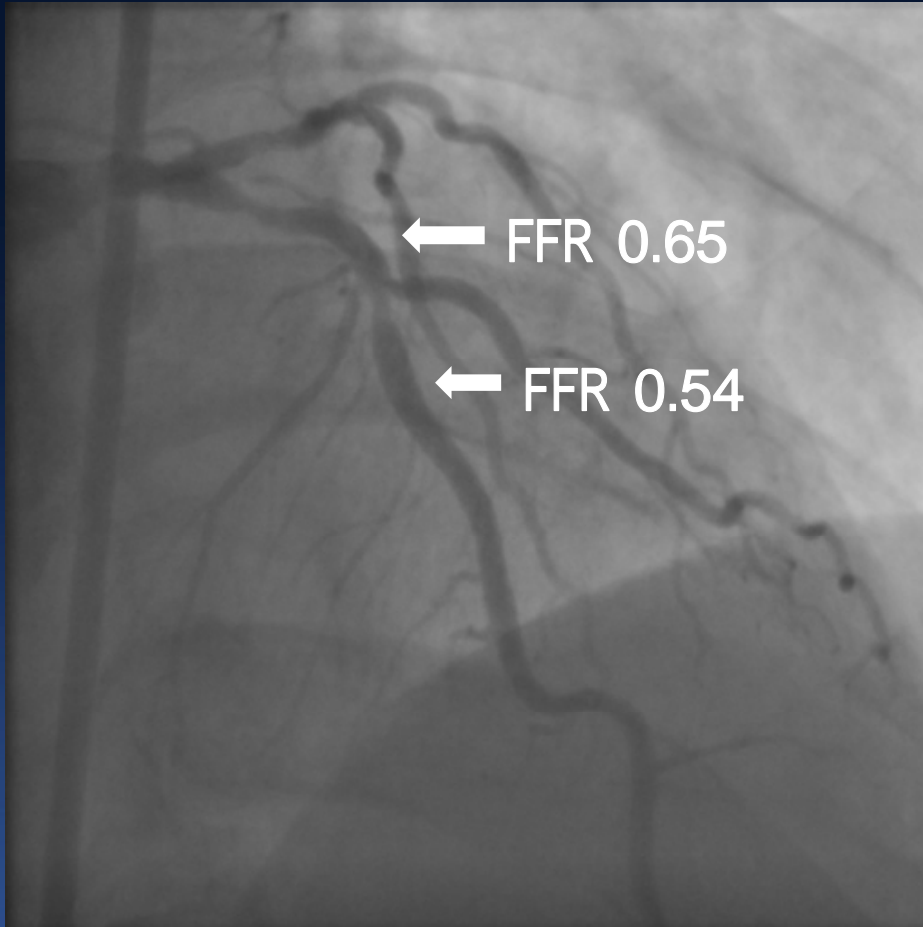
가 (side branch, 2.5mm

) 가

- M/ 67
- C.C : Chest pain (s-AP), AAA for EVAR
- Thallium : multiple
- CAG :
LM 70%
mLAD 70%,

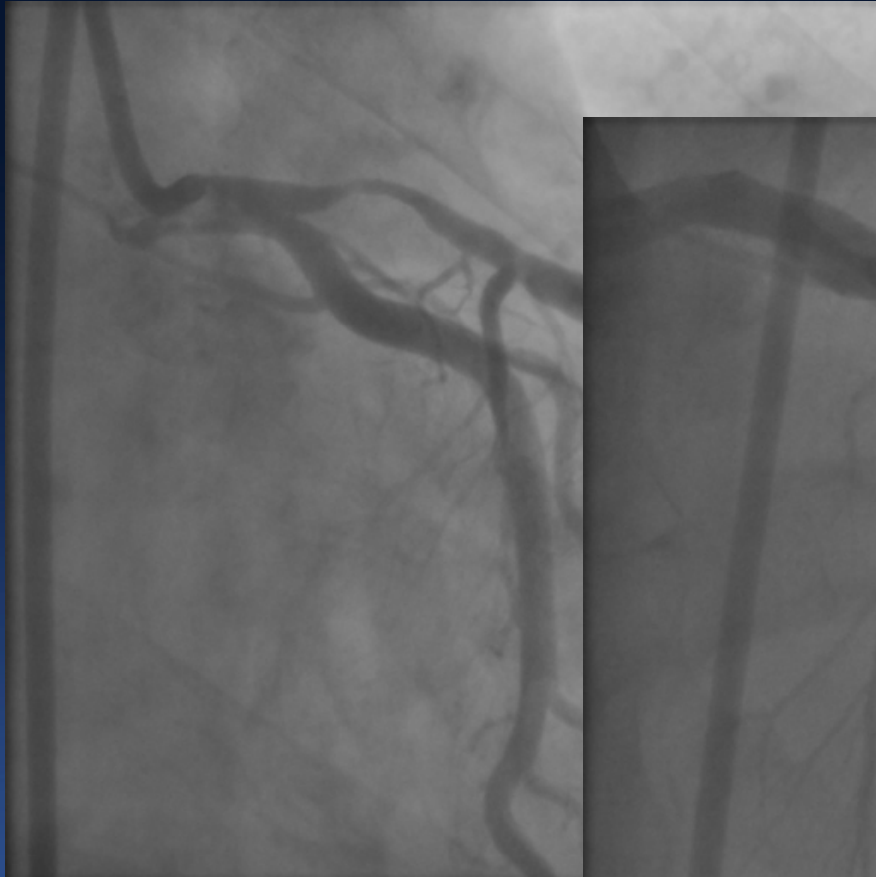


⋮

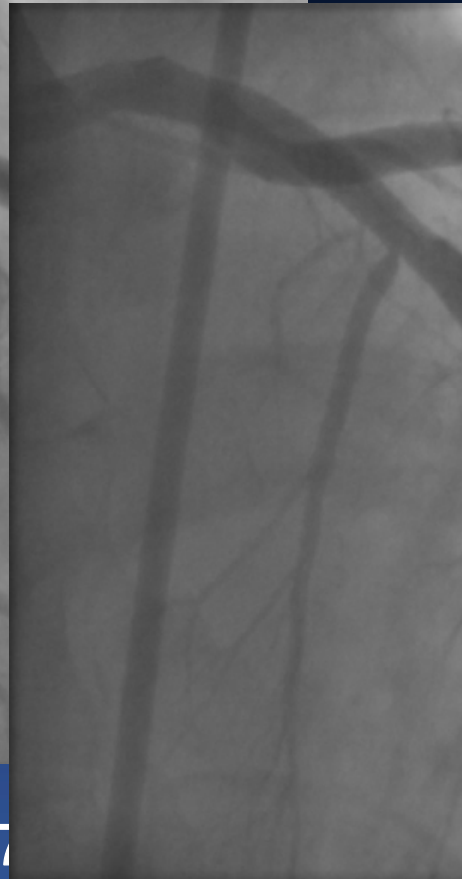


Tandem lesion

⋮



pLAD 90%, dLAD 70%



dLAD Stenting

DS>70%(pLAD) Lesion FFR

Contents

-
-
-
- (bifurcation lesion)
(main branch)
가 (side branch,
2.5mm) 가

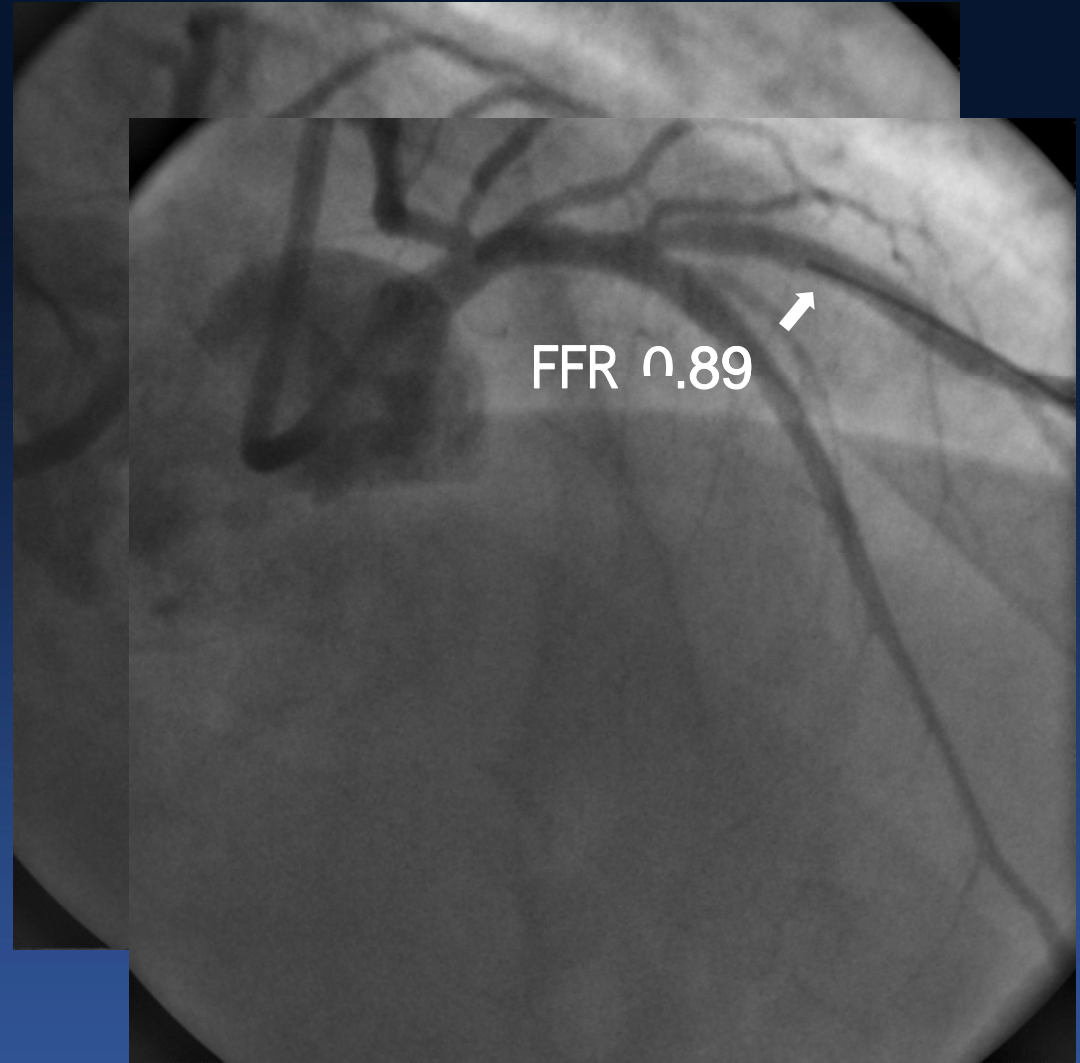
SB FFR after MB stenting

- M/62
- C.C : Chest pain (NSTEMI)
- TMT , Thallium : not done
- CAG :
pLAD Bifurcation
subtotal ISR

LAD stent

Diagonal FFR 0.89

->leave it alone



FFR

AMC

⊙ Coronary Anatomy

| Seg | DS | Lesion Length | Description |
|--|-------|------------------|-----------------------|
| mRCA | 50 | Tubular(10-20mm) | FFR 1->0.94 |
| pLAD | 70 | Diffuse (>20mm) | p-mLAD, FFR 0.9->0.73 |
| <p>심근허혈의 객관적 증거가 없는 병변에 FFR 시행함. (Thallium spect, TMT 검사 없는 환자임)</p> | | | |
| pL CX | 40-50 | Diffuse (>20mm) | p-dl CX |

⊙ Coronary Anatomy

| Seg | DS | Lesion Length | Description |
|---|----|------------------|----------------|
| LM | 70 | Tubular(10-20mm) | |
| mLAD | 70 | Tubular(10-20mm) | FFR:0.90->0.69 |
| <p>단일혈관 내 두개 이상의 병변이 있는 경우 FFR 시행함.</p> | | | |

⊙ Coronary Anatomy

| Seg | DS | Lesion Length | Description |
|---|----|------------------|-------------|
| pLAD | 80 | Tubular(10-20mm) | |
| <p>2nd Diagonal : 분지병변에서 주간지 스텐트삽입 후 결가지(2.5mm이상) 혈관 추가시술여부 판단이 필요하여 FFR시행함 - 0.96->0.88</p> | | | |

Conclusion

- CAG FFR 50-70% intermediate lesion
-> Intermediate lesion FFR
- Multivessel disease FFR, Tandem lesion Intermediate lesion
- CAG TMT Thallium intermediate lesion
(가)
- MB Stent SB(RVD>2.5mm) 가

FFR