



INSTITUT JANTUNG NEGARA
National Heart Institute



Nobori DES For LMS Stenting

ROSLI Mohd Ali
Head
Department of Cardiology
National Heart Institute
Kuala Lumpur



23/4/08 - 216947

59 yr M

CCS II, Stress test +ve St. 2

Smoker, DM

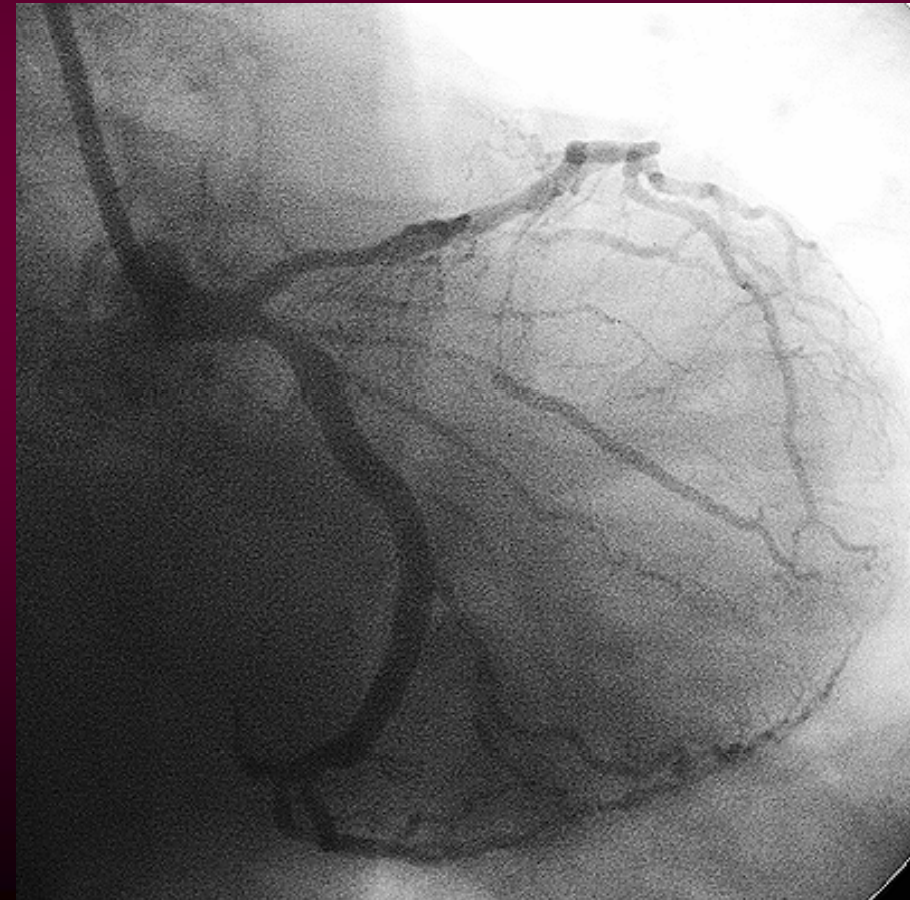
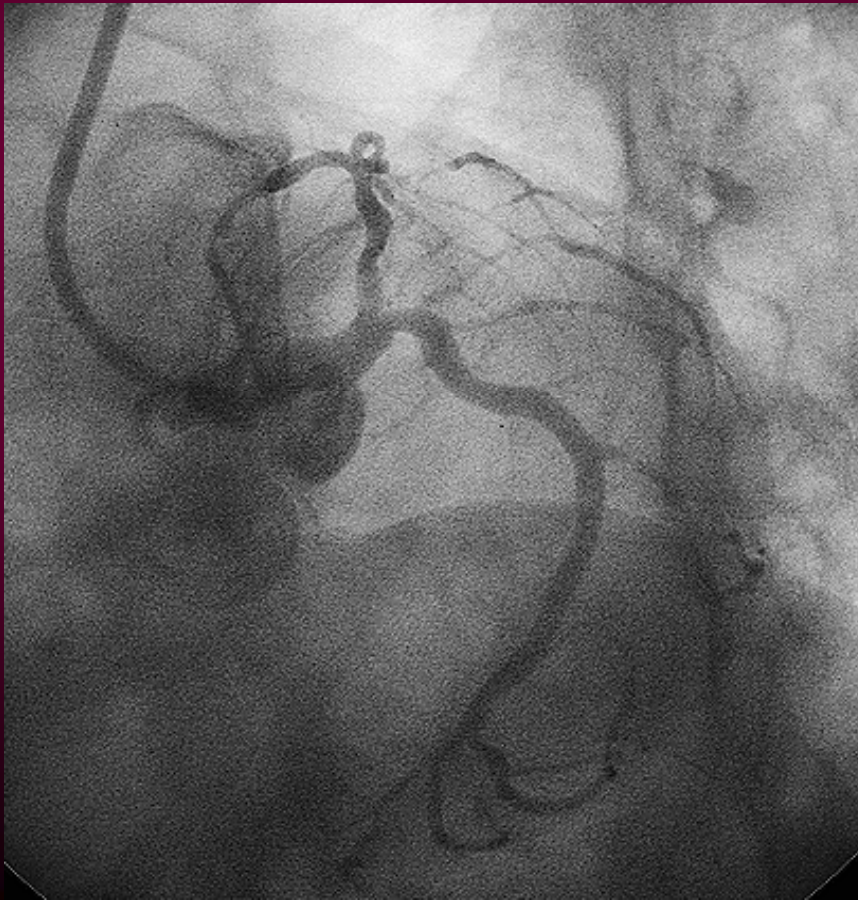
LMS /LAD/LCx 1,1,1

IVUS

LAD – 3.5 mm²
3.9 mm

Distal LMS – 6.8 mm²
5.3 mm

LCx – 5.3 mm²
4.6 mm



23/4/08 - 216947

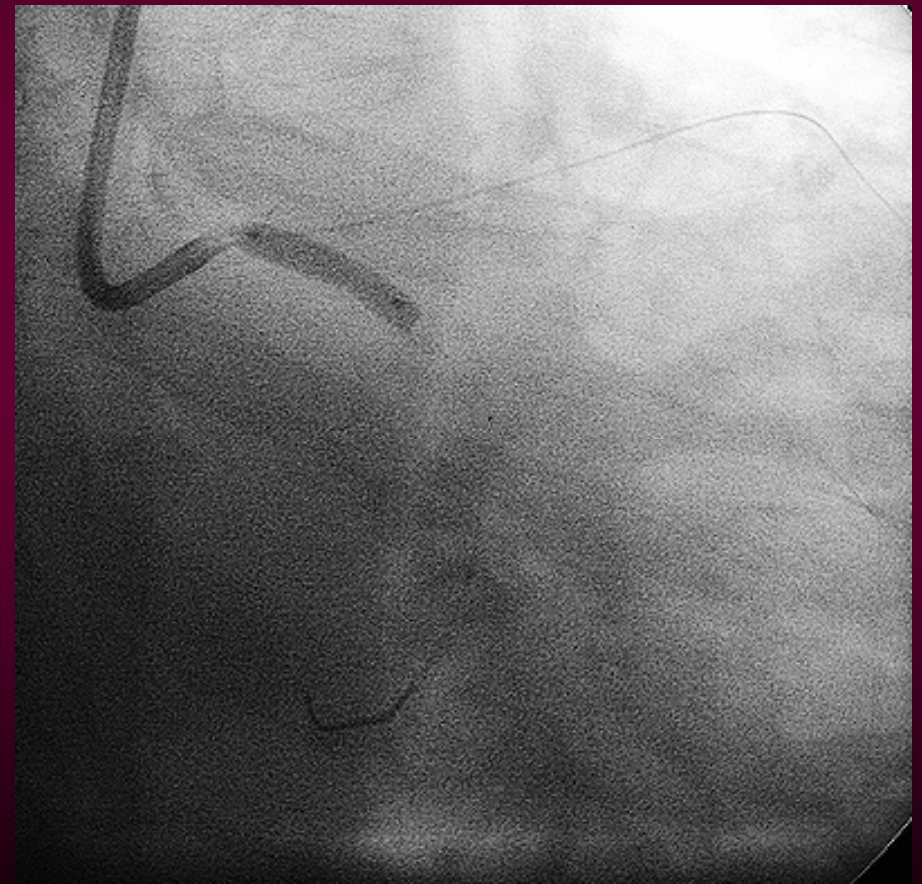
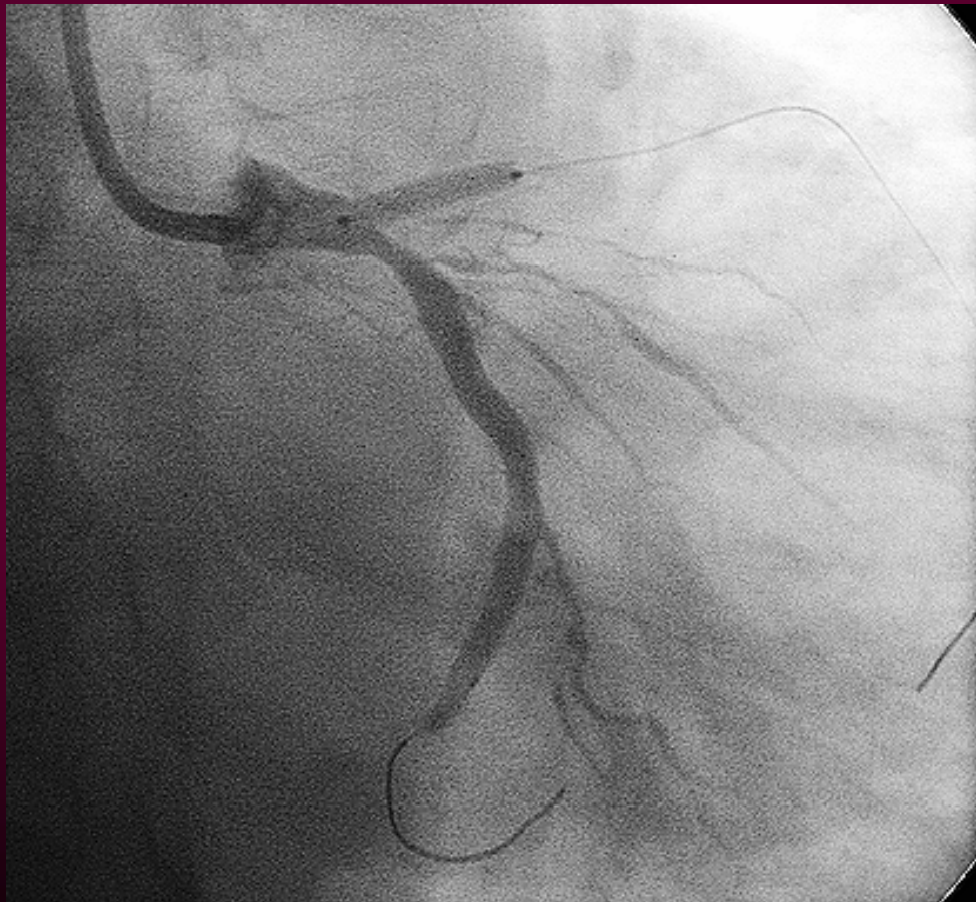


TRI

EBU 3.5 7F
BMW x 2

LAD – CBA 3.0 x 15

LCx – CBA 3.5 x 15



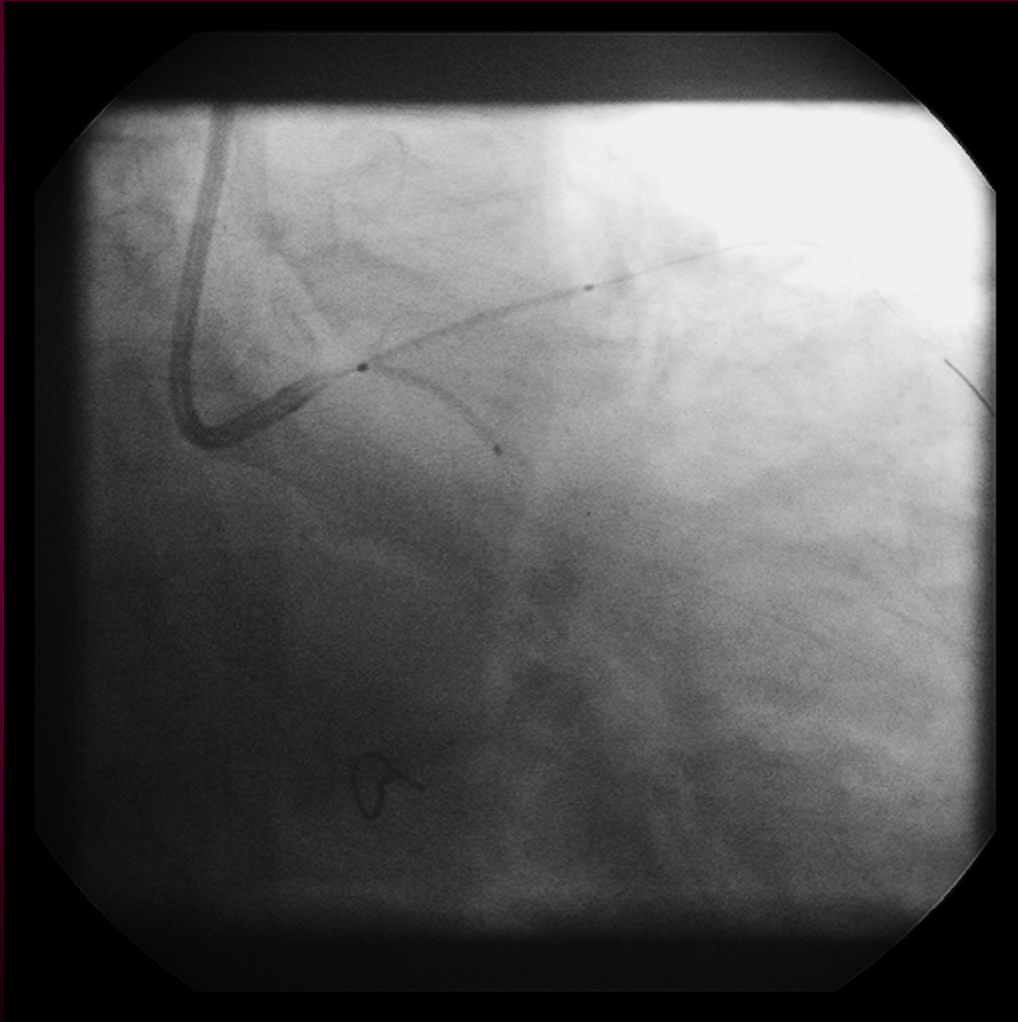


23/4/08 - 216947

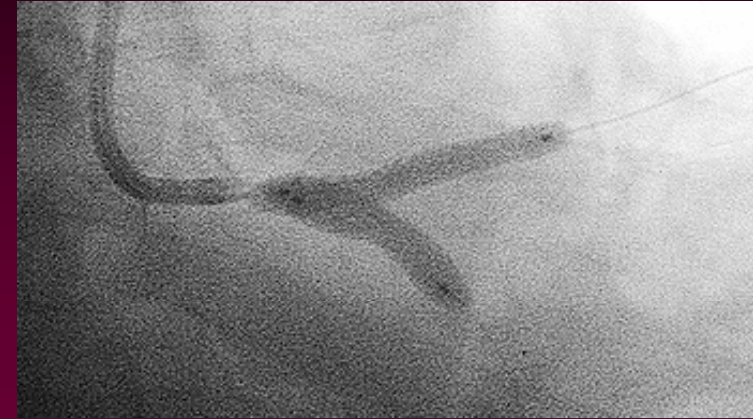
Simultaneous Kissing Stents

LAD – Nobori 3.0 x 24

LCx - Biomatrix 3.5 x 15



Deployed at 18 Atm

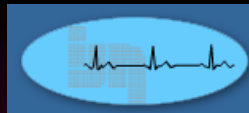


LAD – 3.5 x 18 – 18 Atm

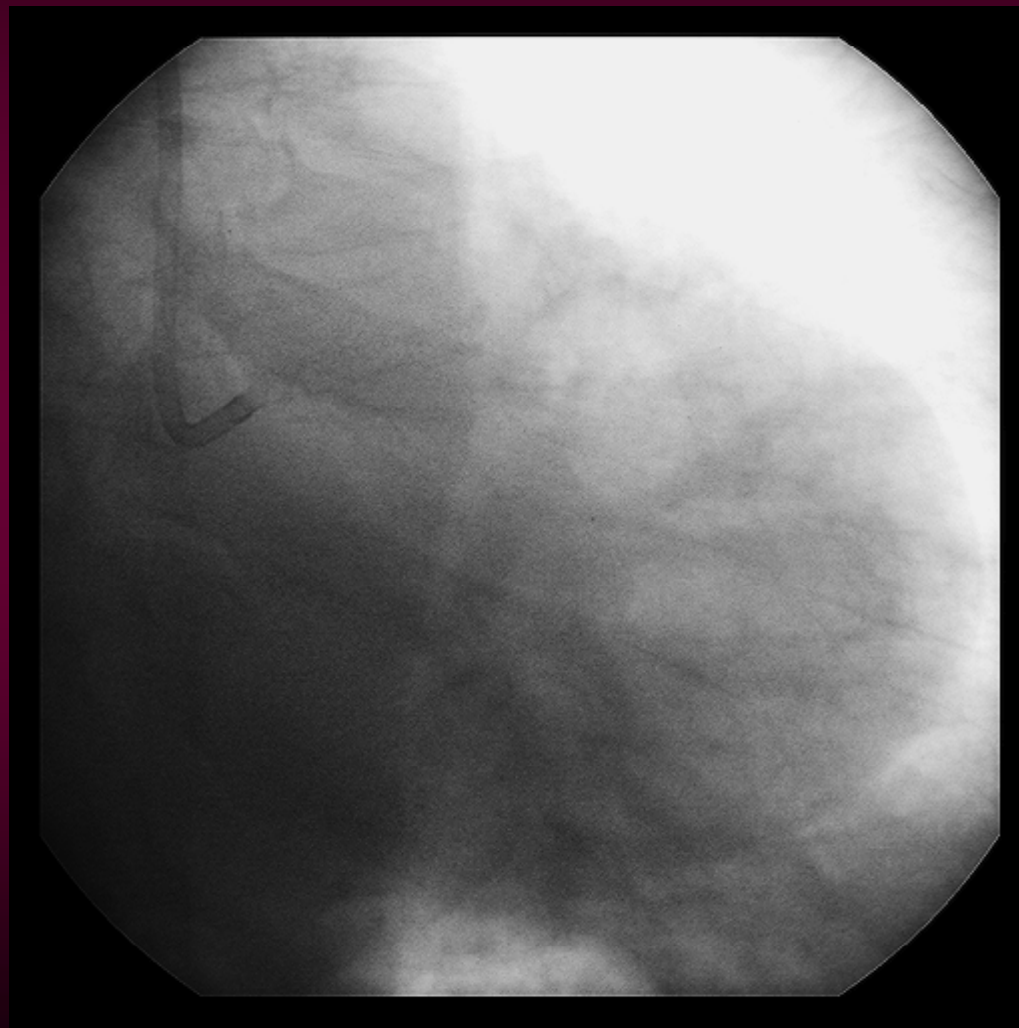
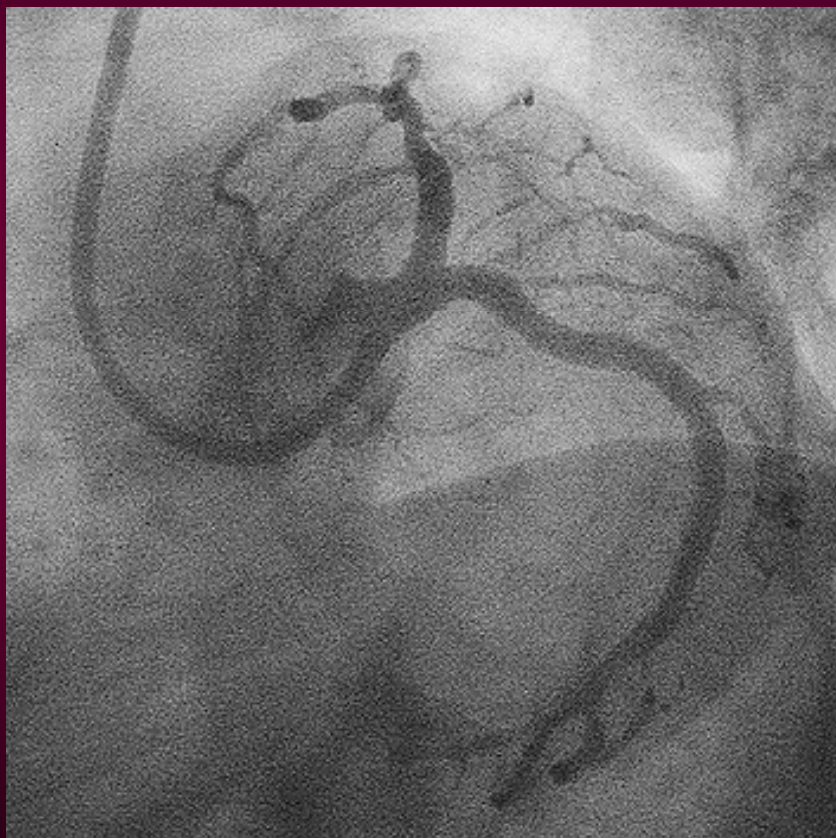
LCx - 4.0 x 12 - 18 Atm



23/4/08 - 216947



Post PCI

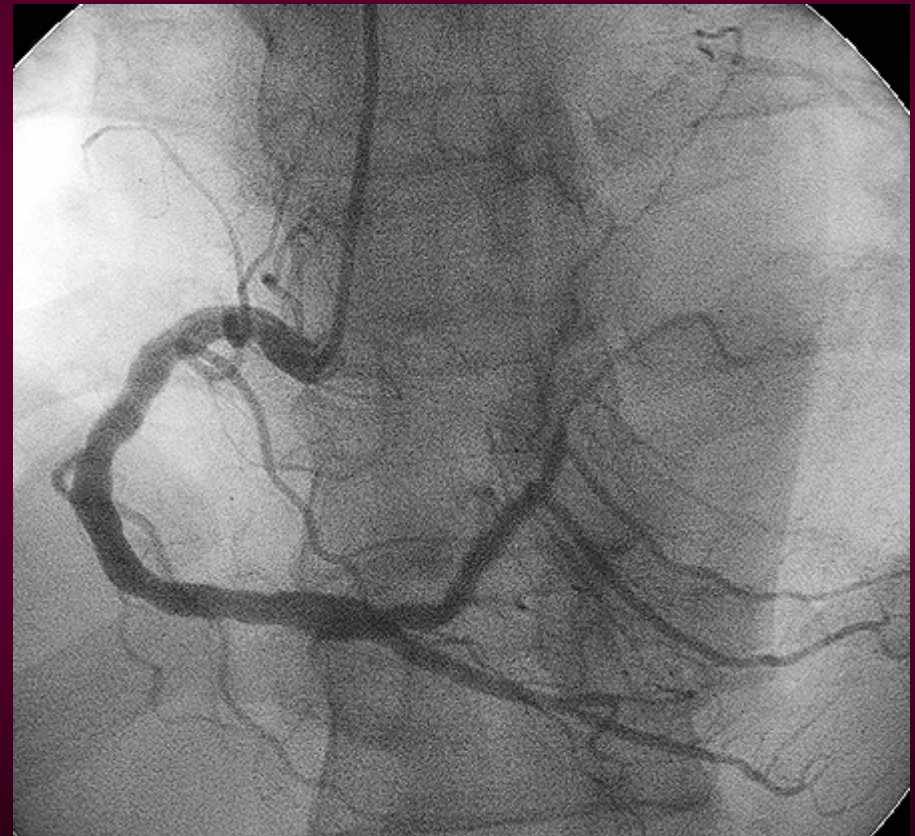
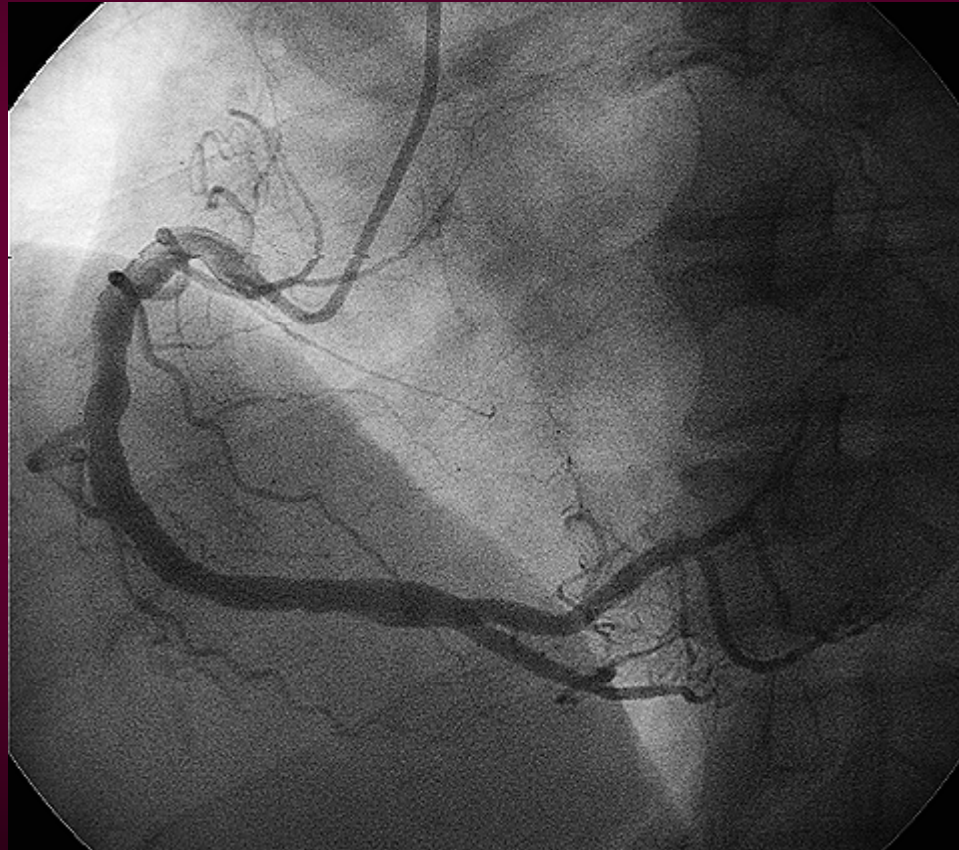




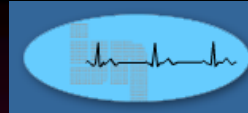
22/3/12 - 279956

65 yr old man
CCS II

DM, HT, Smoker

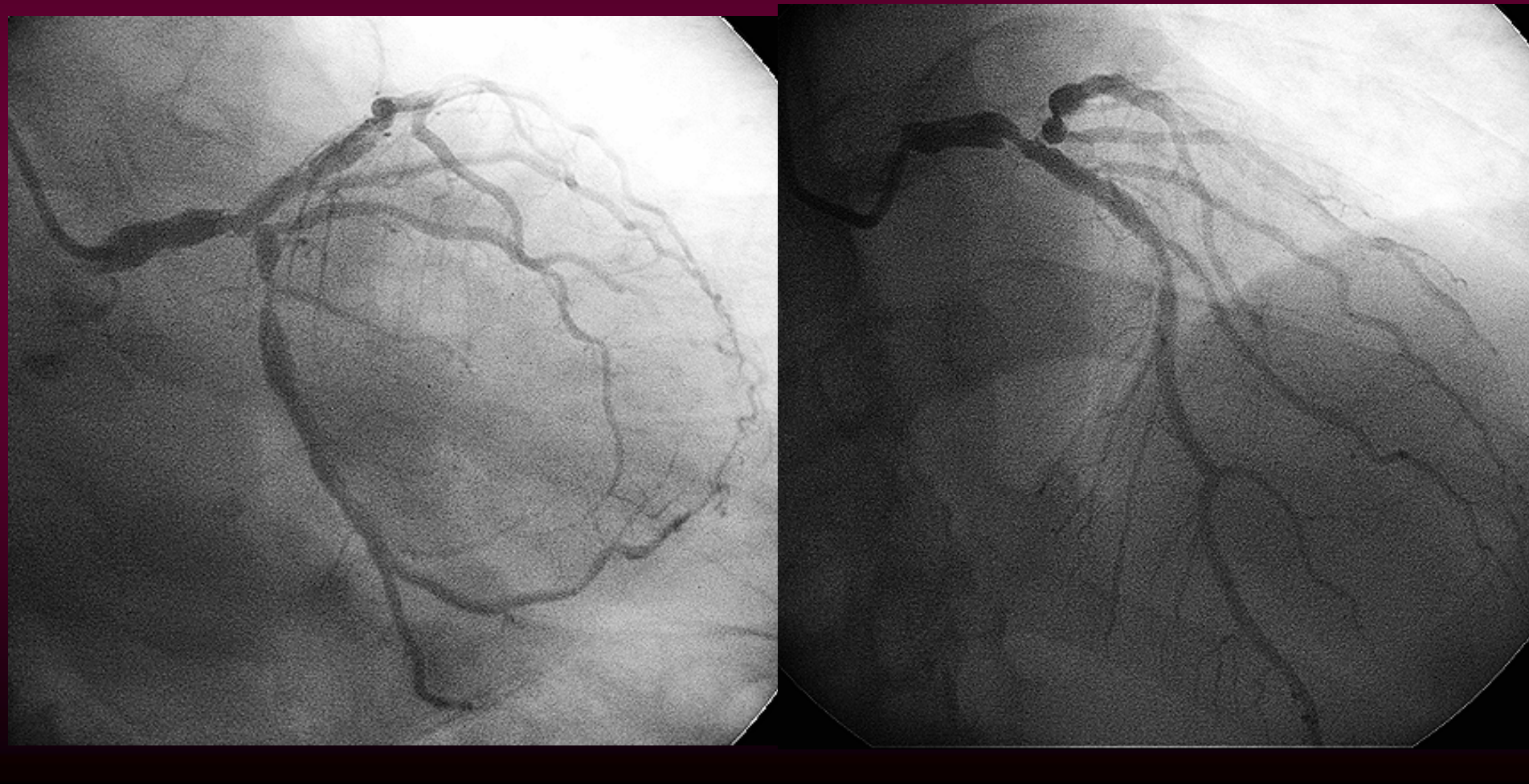


22/3/12 - 279956



LMS/LAD/LCx 1,1,1

LCx/OM 1,0,1





22/3/12 - 279956

TRI

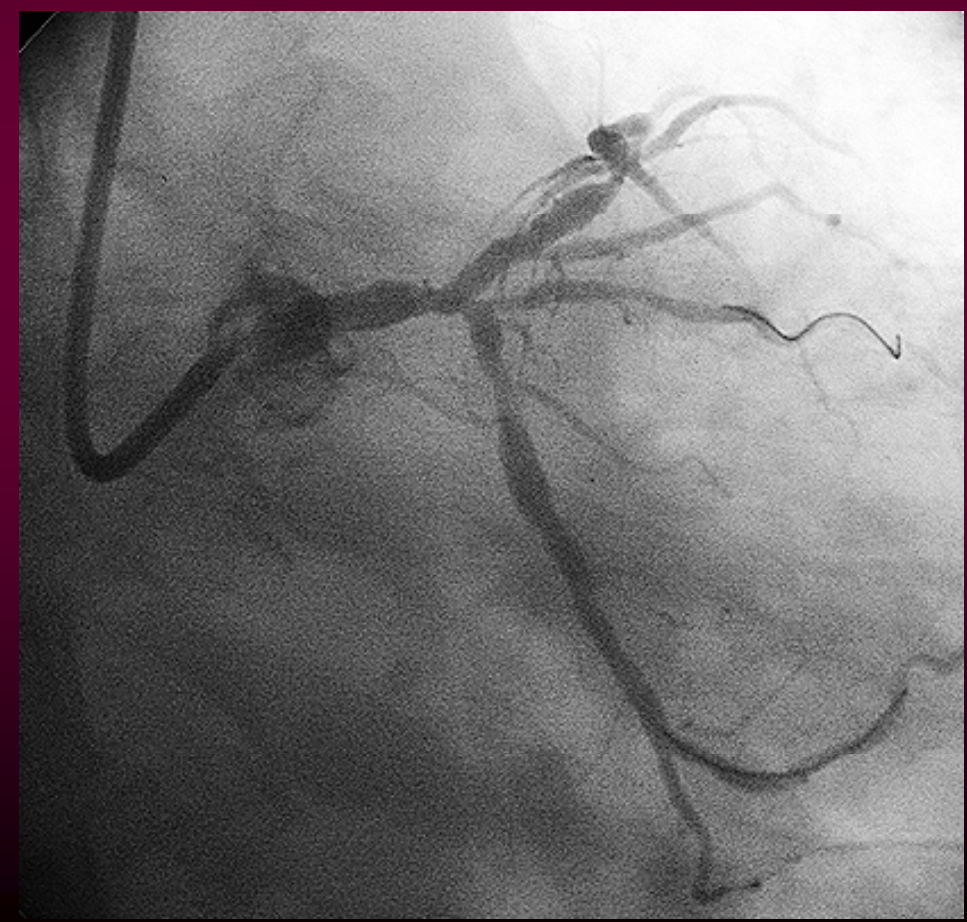
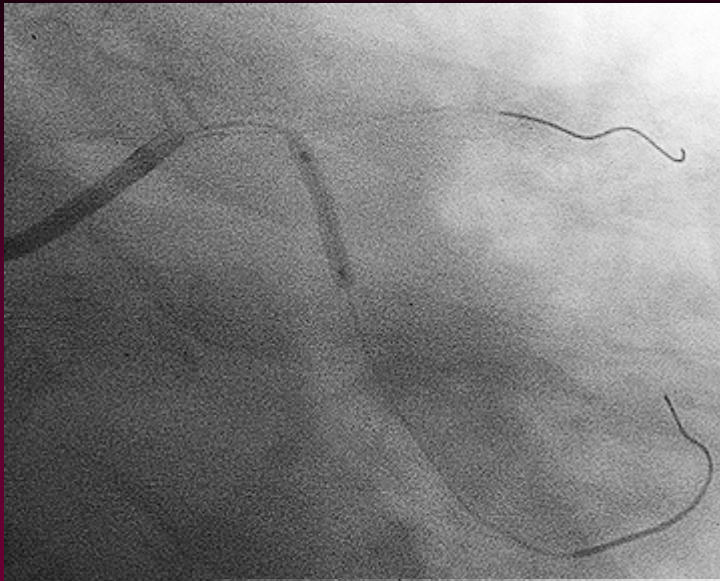
EBU 3.5 7 Fr

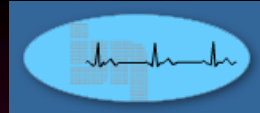
Runthrough Floppy

Asahi Sion

Tazuna 2.5 x 20 mm

LMS/LCx

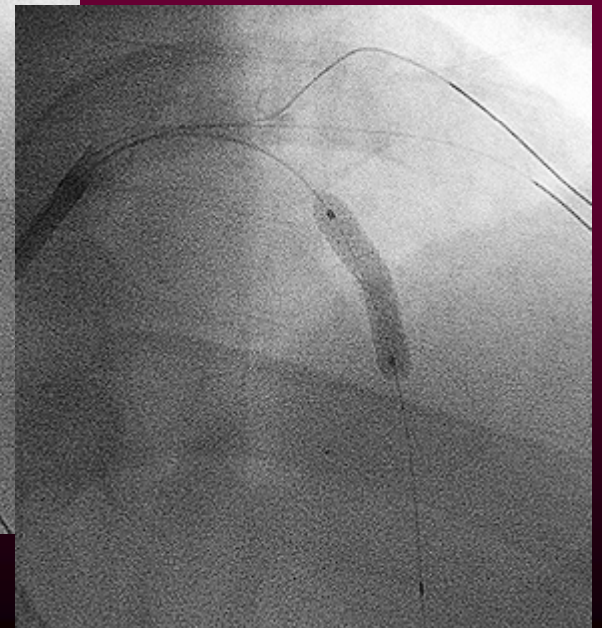
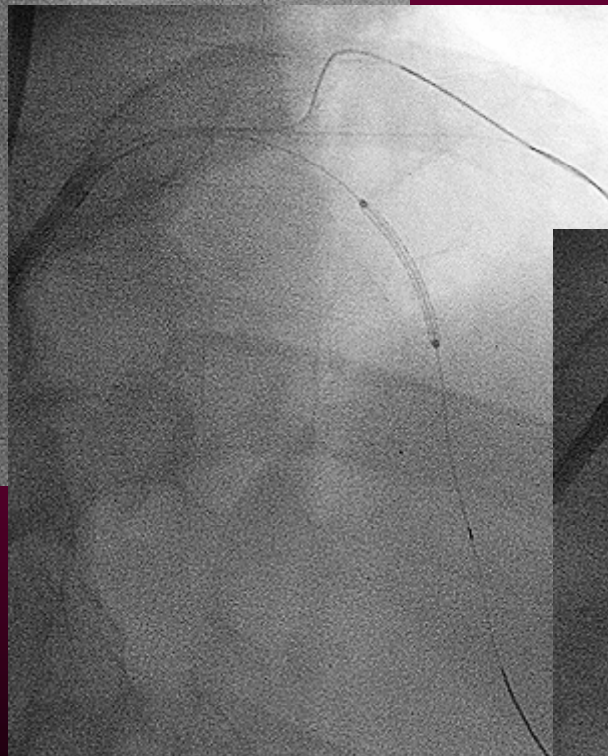
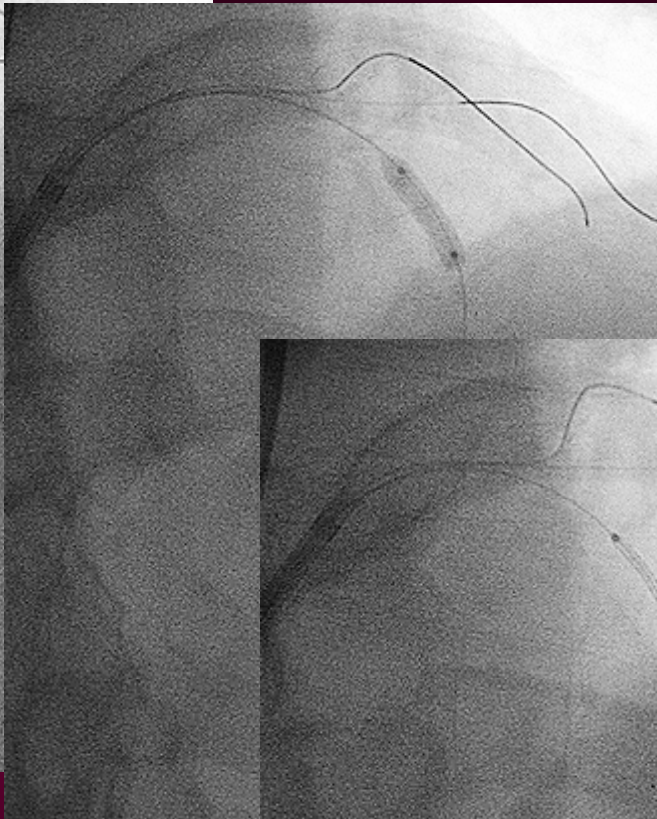
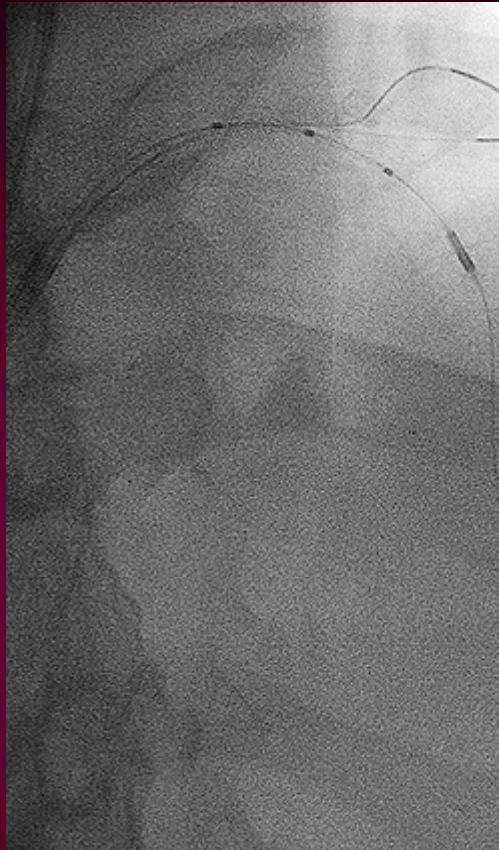




22/3/12 - 279956

BMW in LAD
IVUS Eagle Eye Volcano

Sapphire NC 3.0 x 12
18 Atm

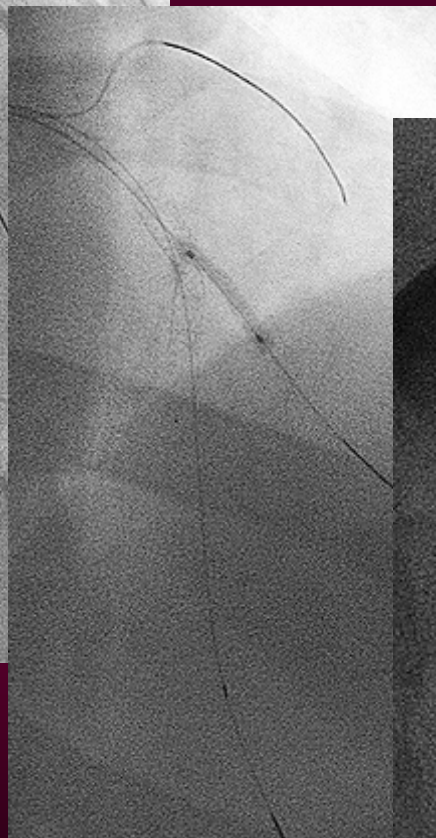
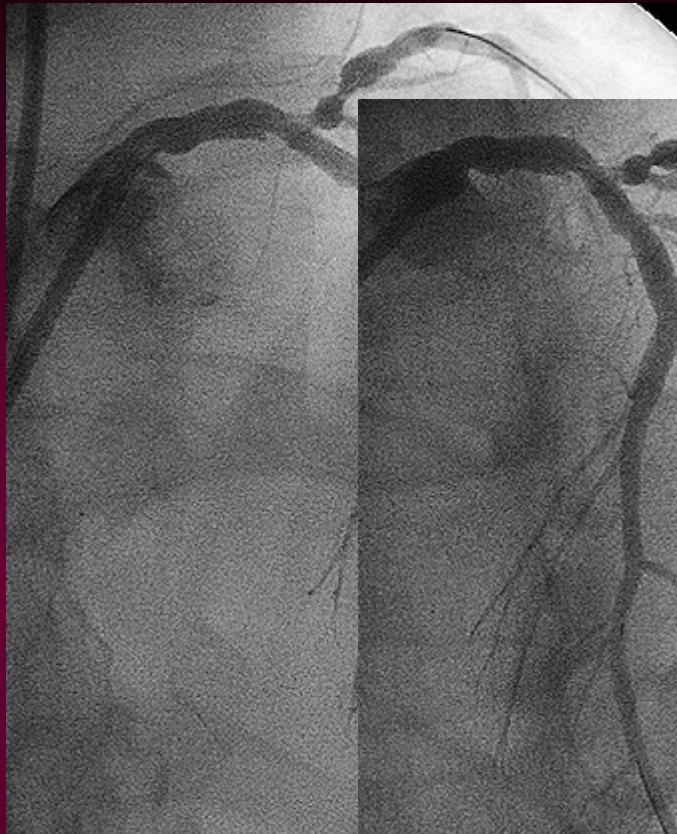


Nobori 3.0 x 18 mm
18 Atm



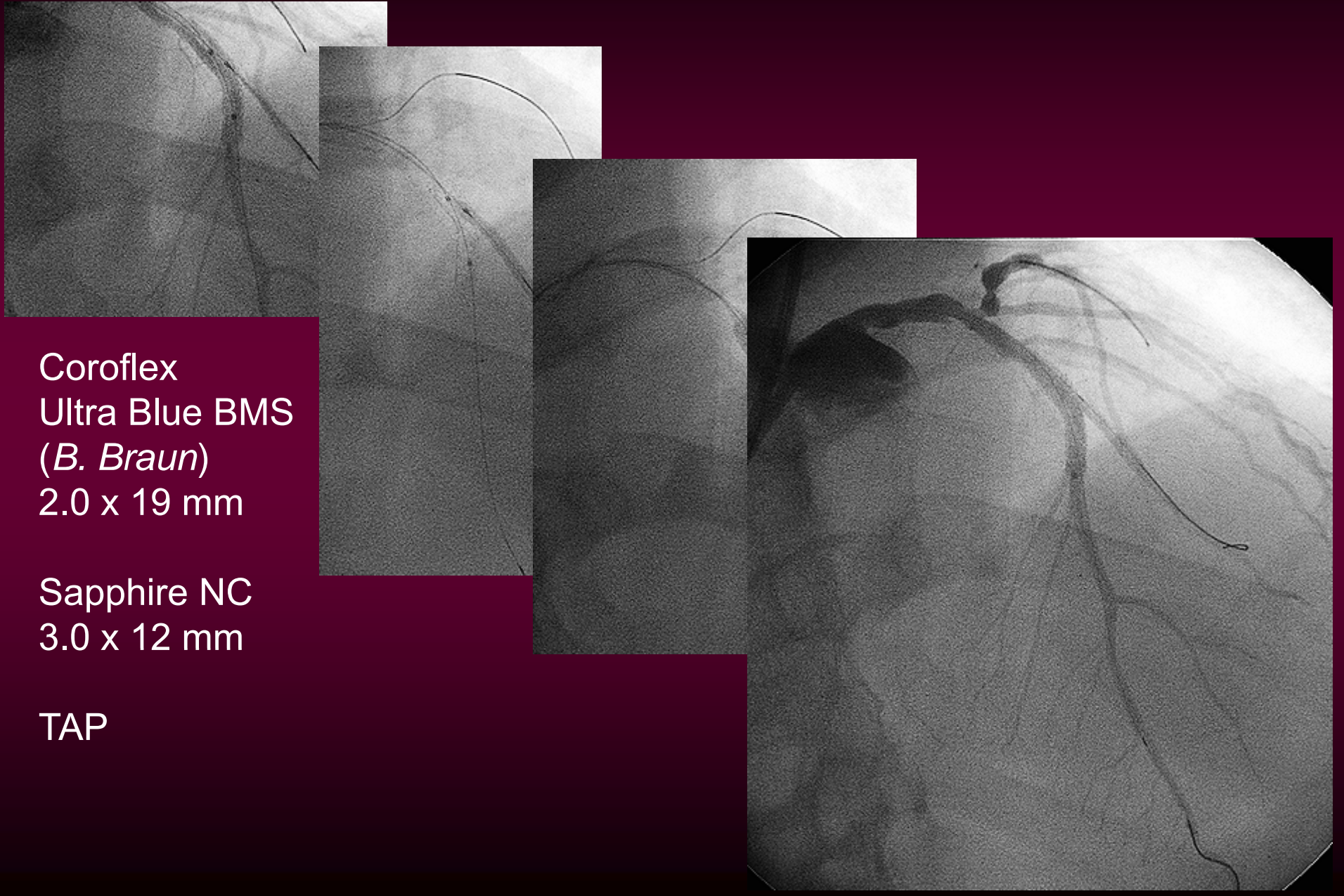
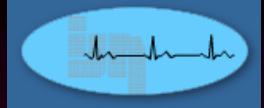
22/3/12 - 279956

Asahi Sion fr. OM to D



Tazuna 2.0 x 15 mm

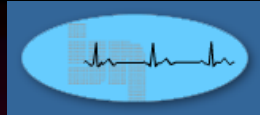
22/3/12 - 279956



Coroflex
Ultra Blue BMS
(*B. Braun*)
2.0 x 19 mm

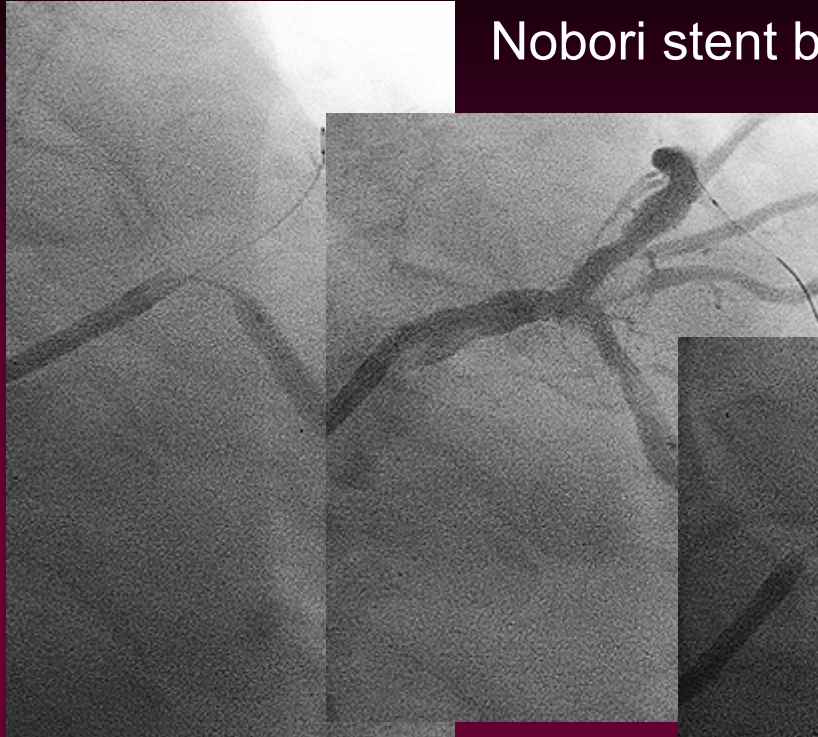
Sapphire NC
3.0 x 12 mm

TAP

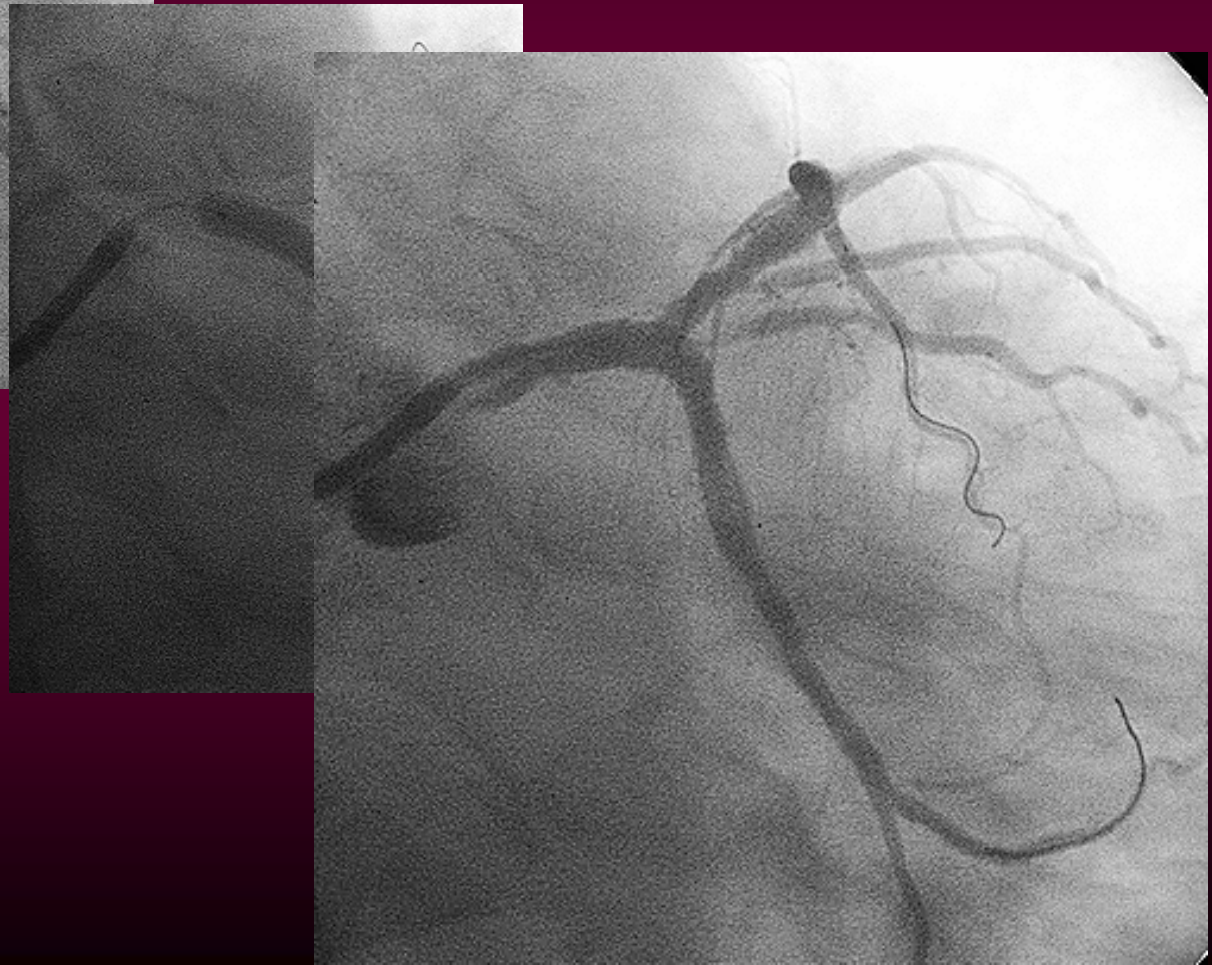


22/3/12 - 279956

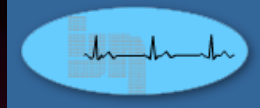
Nobori stent balloon 3.0 x 18 mm



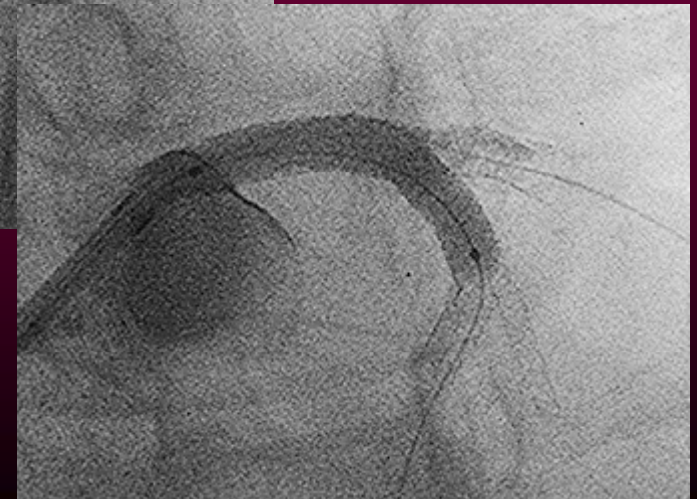
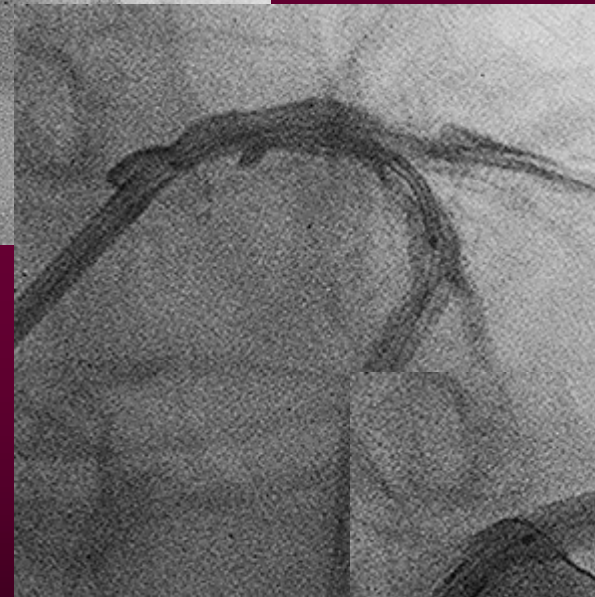
Nobori 3.5 x 24 mm
16 & 20 Atm



22/3/12 - 279956



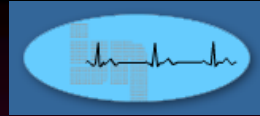
Nobori 3.5 x 28 mm



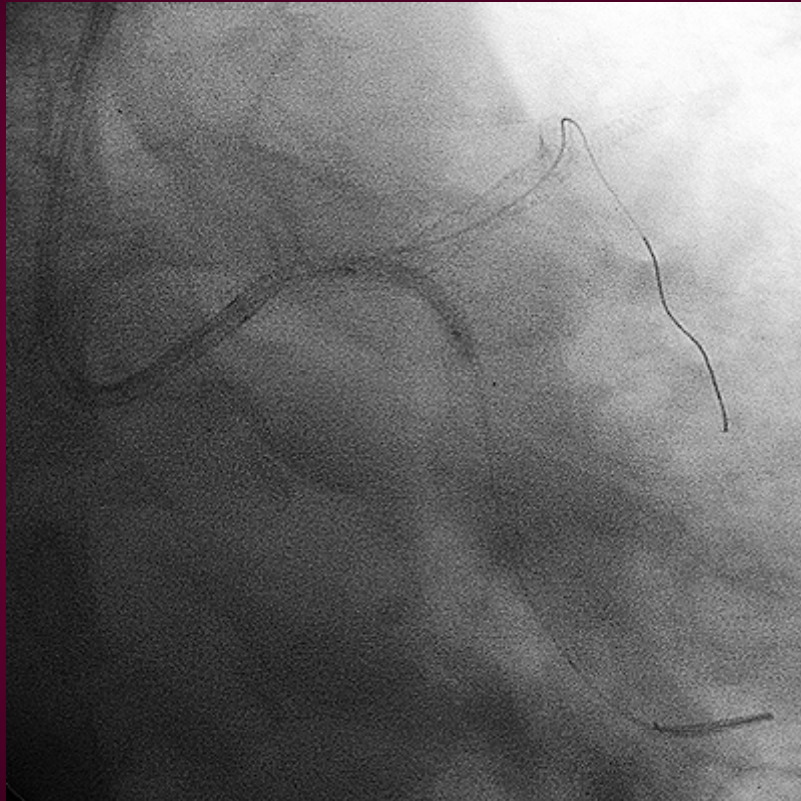
Flip-flop wire

Tazuna 2.5 x 15 mm

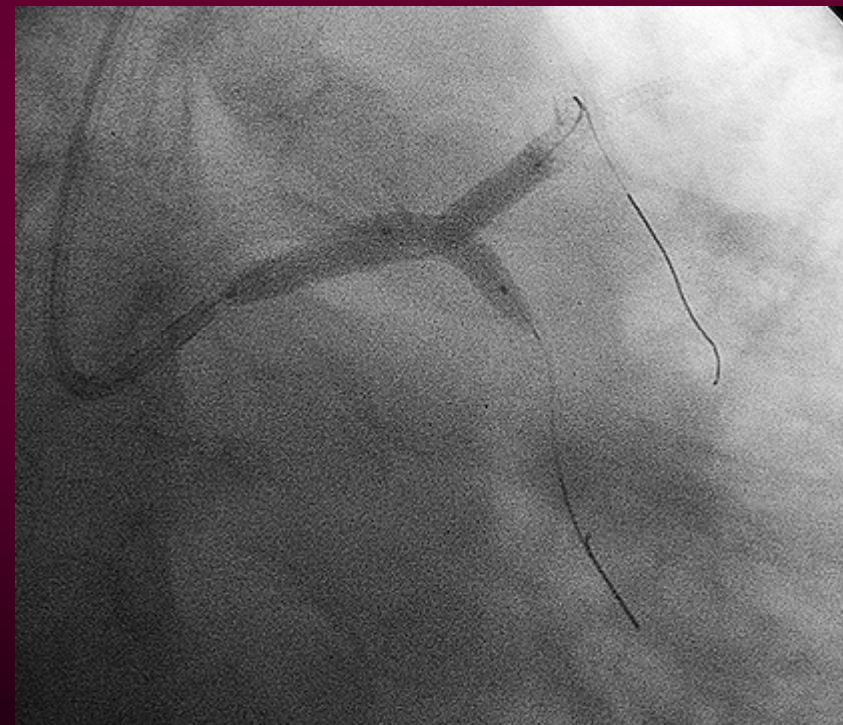
22/3/12 - 279956



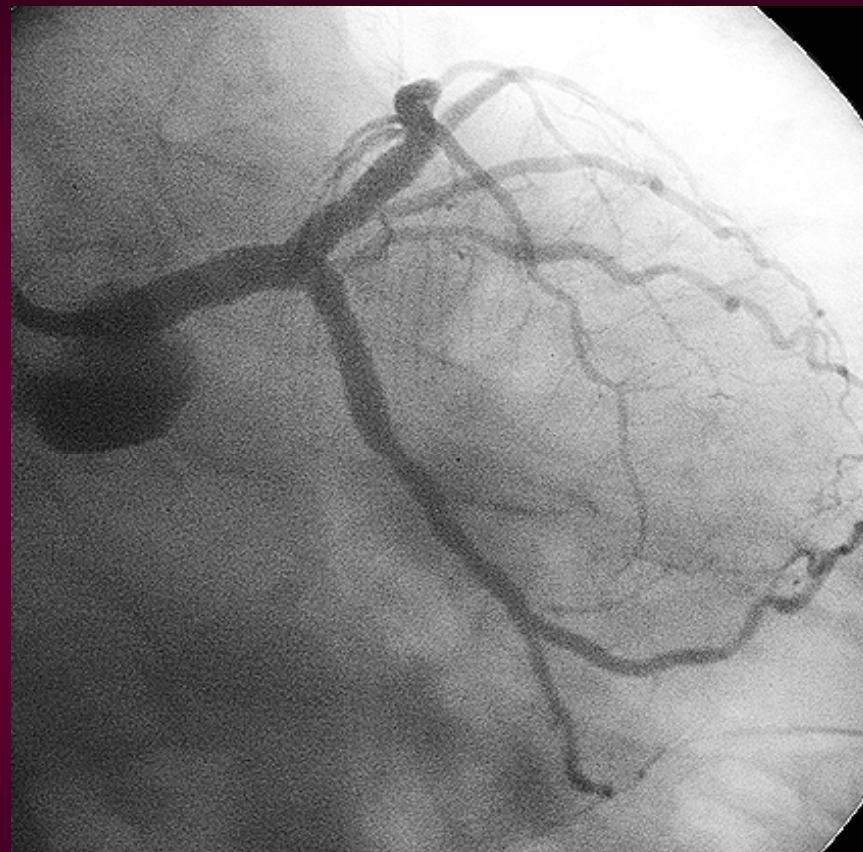
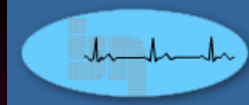
Rewired Lcx
Tazuna 2.5 x 15 mm



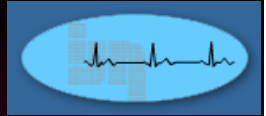
Nobori Stent Balloon 3.5 x 28 mm
Sapphire 2 3.5 x 12 mm
10 Atm



22/3/12 - 279956



22/3/12 - 279956



LMS/LAD

Nobori 3.5 x 28 mm

LMS/LCx

Nobori 3.5 x 24

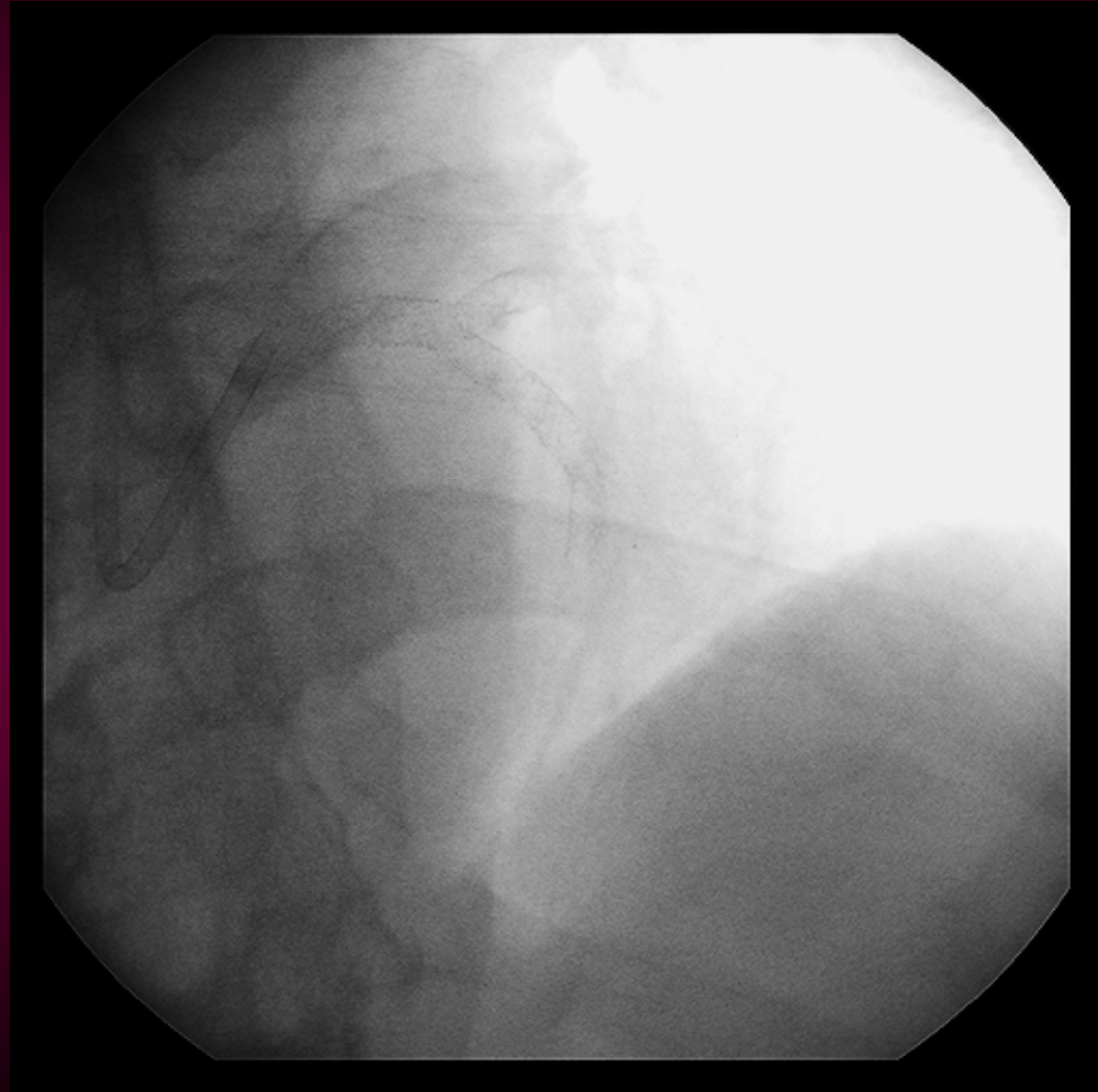
LAD

Nobori 3.0 x 18

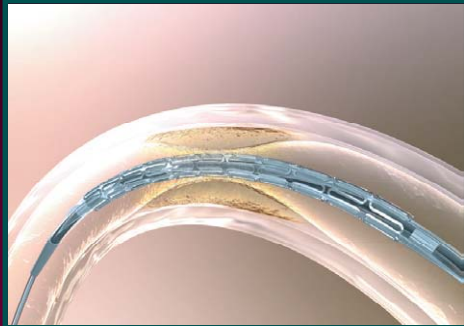
D2

Coroflex Ultra Blue

2.0 x 19 mm



Nobori DES Components



BMS Platform

Excellent Flexibility and Scaffolding

Optimal Side Branch Access

Innovative Delivery System with Hydrophilic M-coating

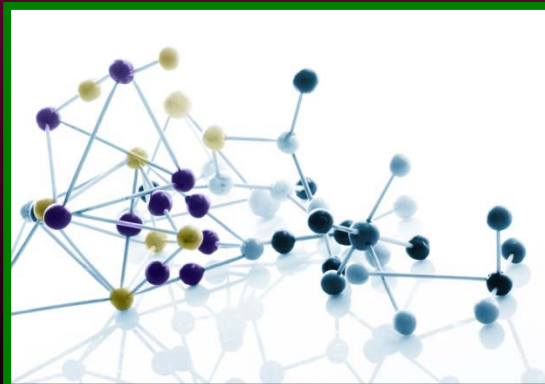
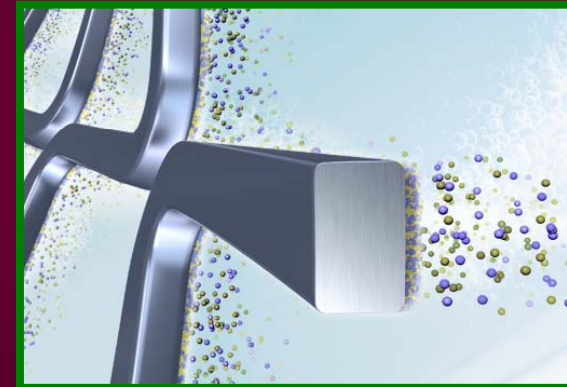
PLA Biodegradable Polymer

Abluminal Coating

Controlled Biodegradability

Precise Drug Release Kinetics

Simultaneous Polymer Degradation and Drug Release



Biolimus A9™ (rapamycin derivative)

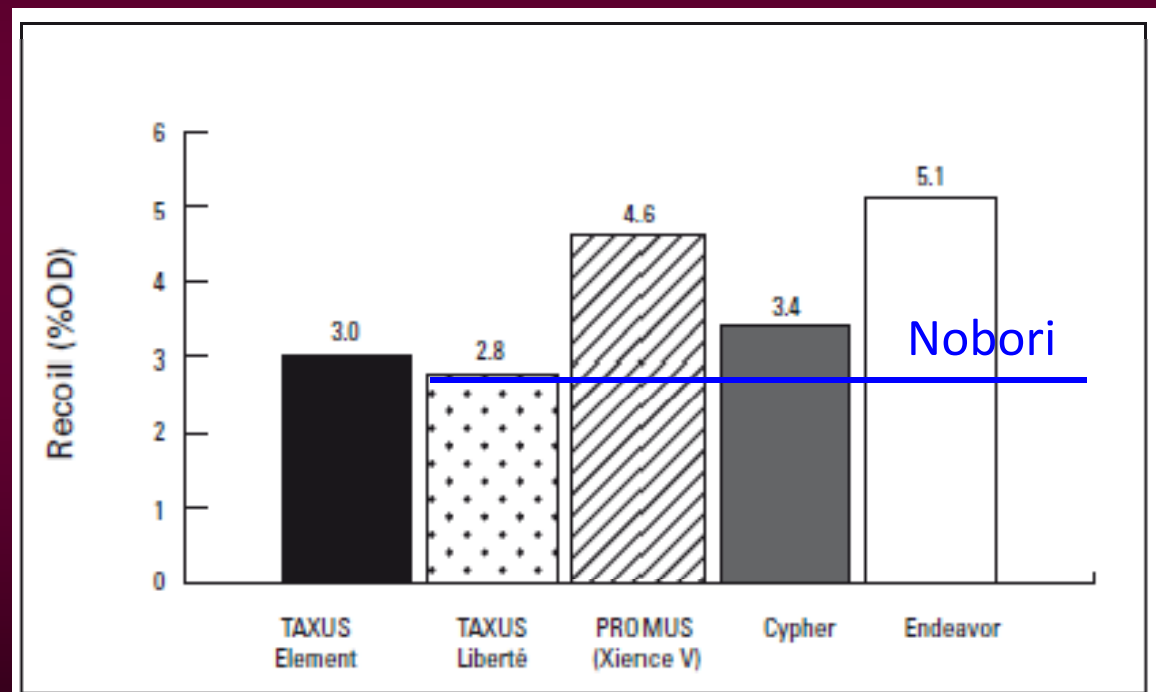
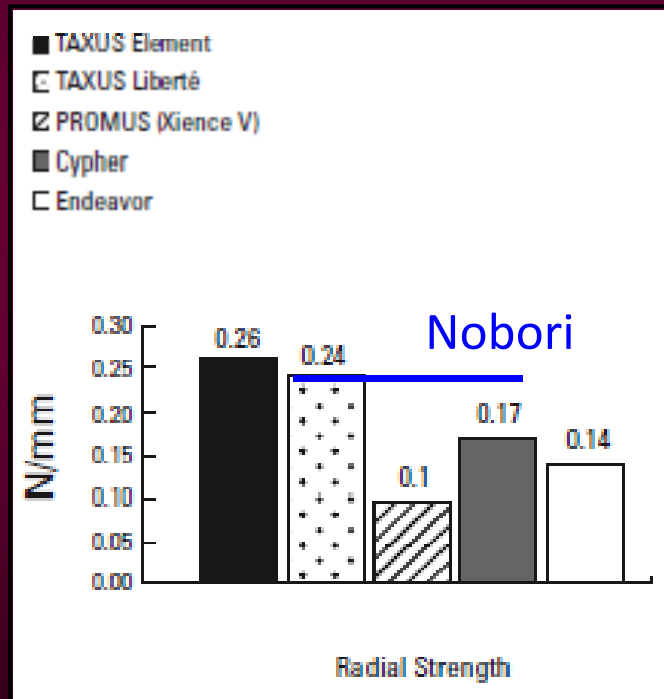
A Potent New “Limus” Designed for Stent Applications

Powerful Anti-proliferative and Anti-inflammatory properties

Prevents Smooth Muscle Cell Proliferation

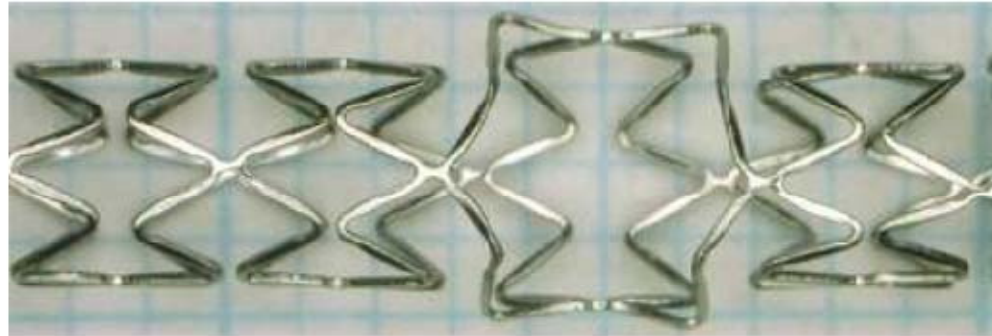
Highly Lipophilic with Optimal Local Tissue Uptake

Nobori provides good wall apposition due to its high level of radial force and less recoil rate

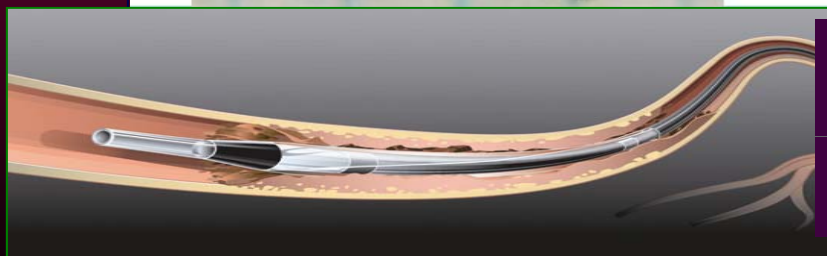
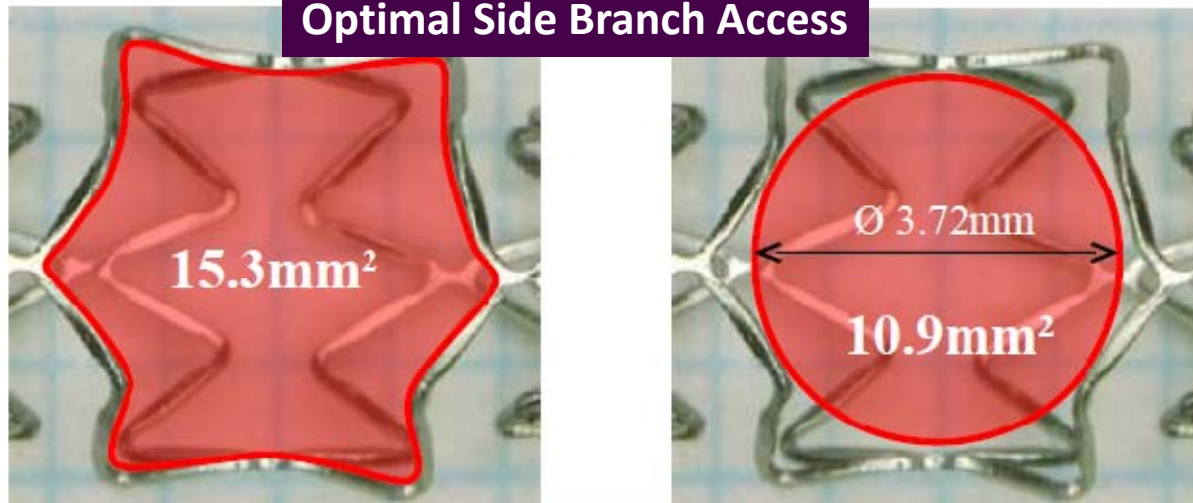


Side-Branch Access

Nobori DES 3.5mm dilated with 4mm balloon



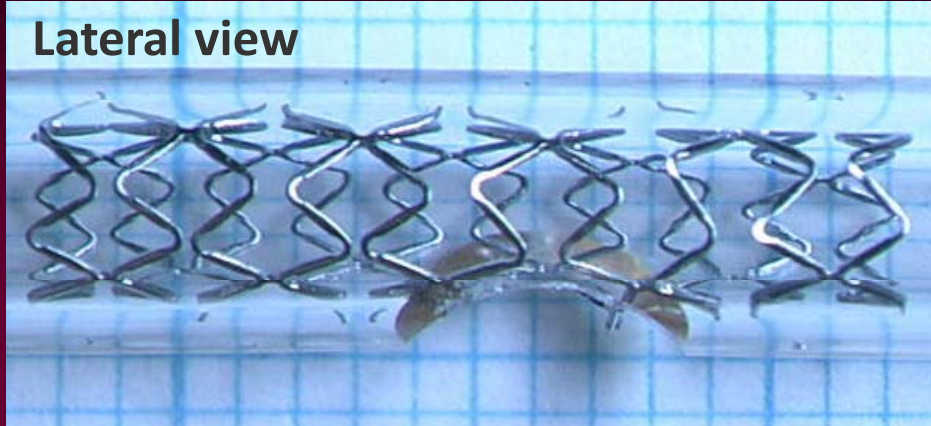
Optimal Side Branch Access



Enhanced deliverability
thanks to hydrophilic
coating

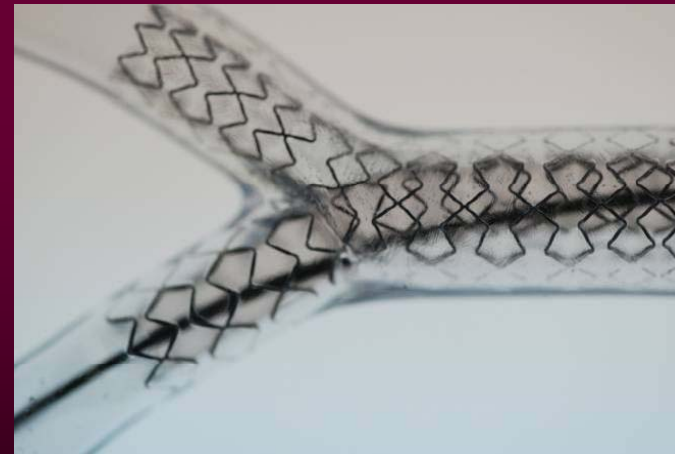
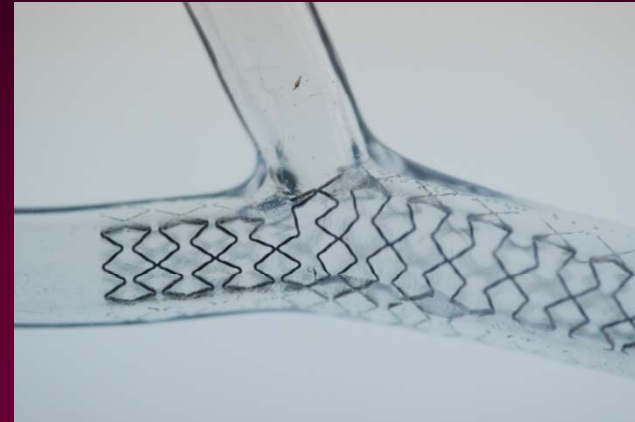
For Bifurcation use

Lateral view



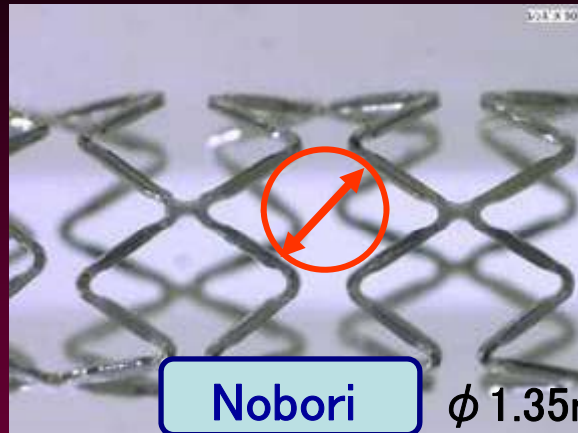
Cell is fitting to the side branch ostium

Conformability To Side Branch
No Gap & No Distortion!

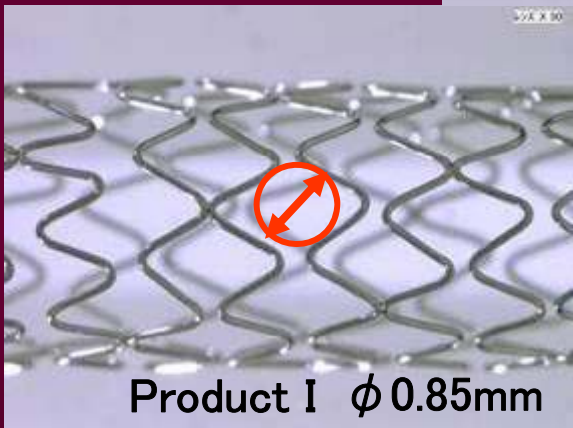


2x (1 Nobori 3.5 x 24 mm)
Proximal vessel 4.5 mm, distal 3.5 mm
2nd stent deployment for culotte technique

Cell design (3.0mm NBP)



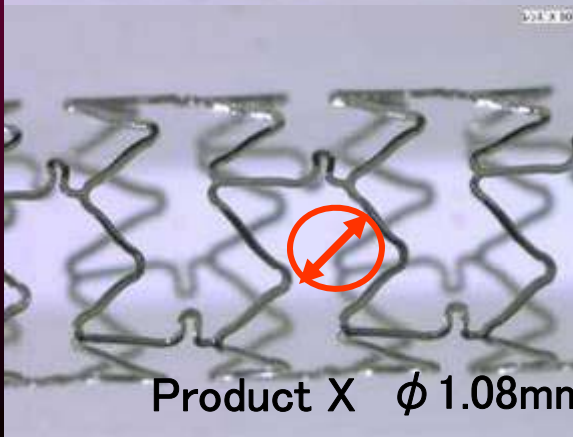
Nobori ϕ 1.35mm



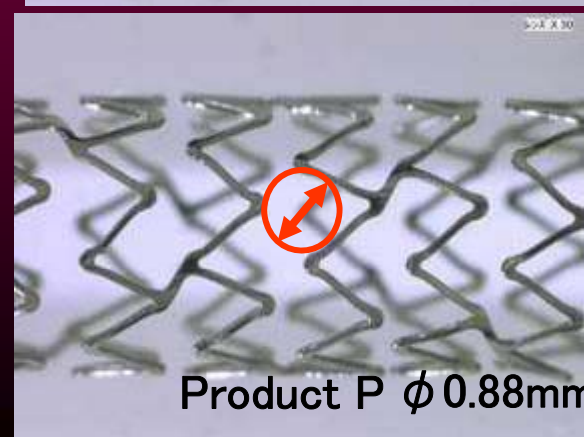
Product I ϕ 0.85mm



Product B ϕ 1.40mm

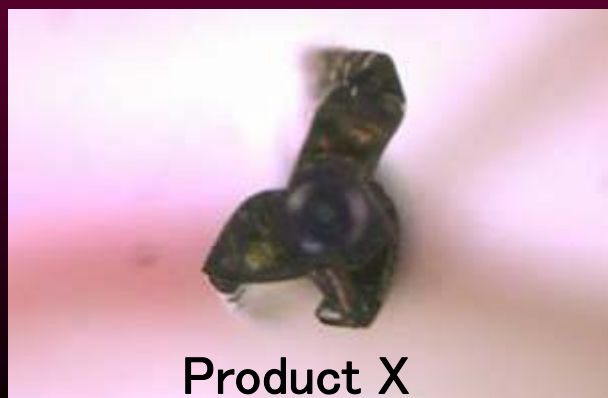
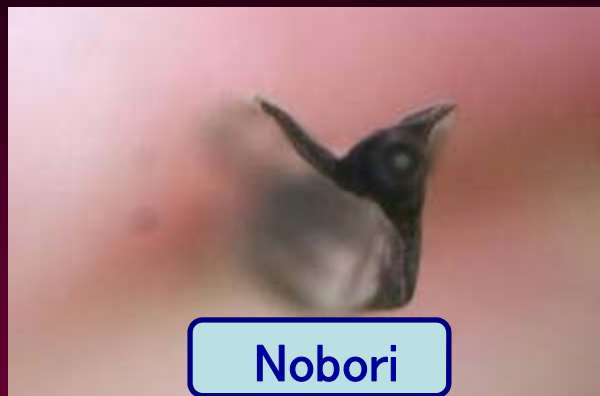


Product X ϕ 1.08mm

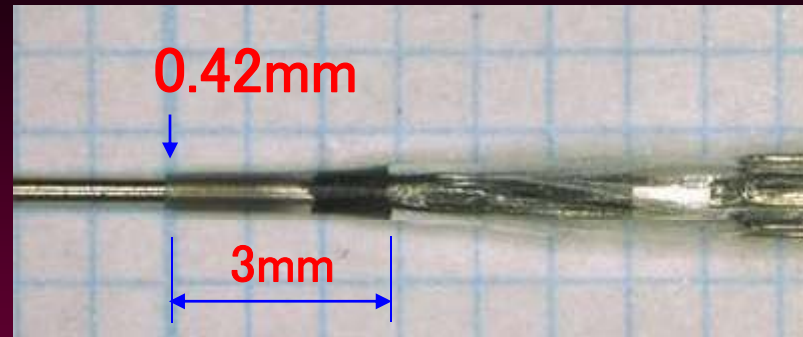


Product P ϕ 0.88mm

Balloon re-wrapping ($\phi 3.0\text{mm}$, after 16 atm inflated)

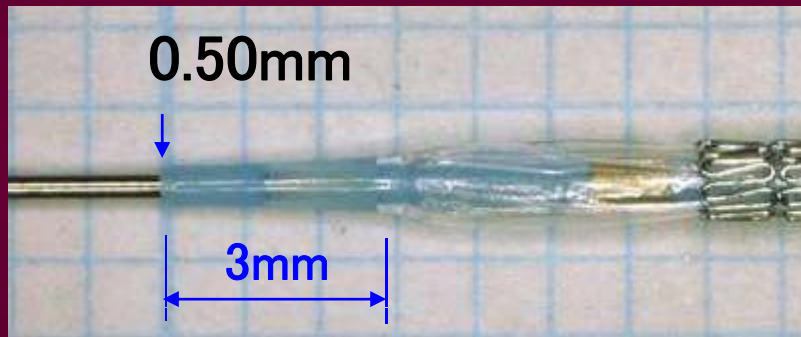


Distal tip (Entry profile)

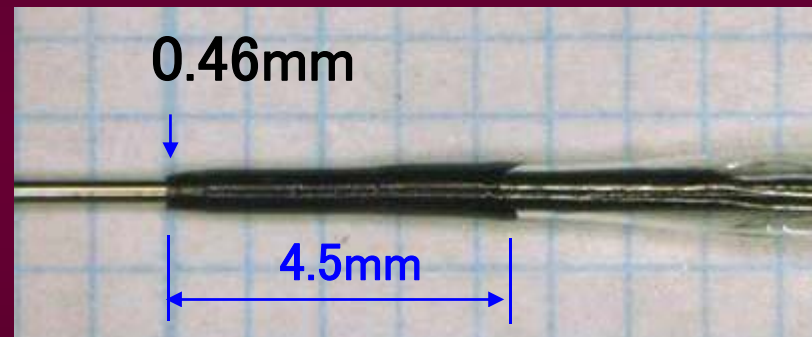


Lowest entry profile!

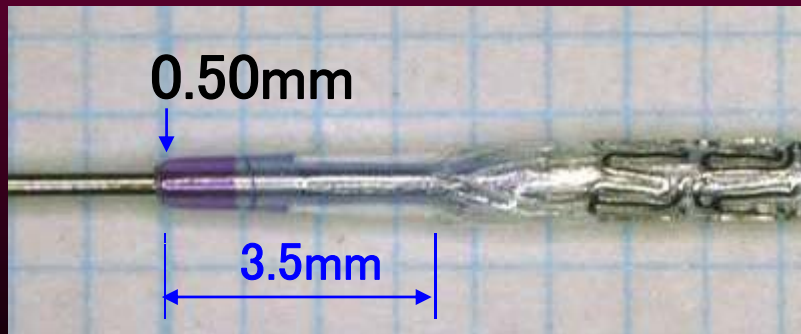
Nobori



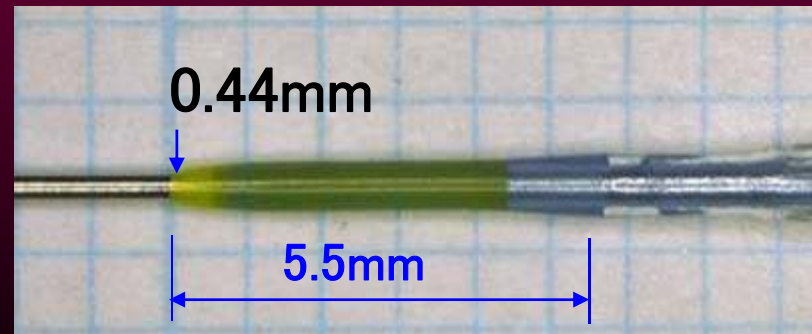
Product I



Product B

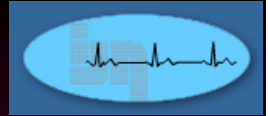


Product X



Product P

Conclusion: Nobori in LMS PCI



Nobori Stent:

- good delivery system
 - lowest tip profile, good balloon re-wrap
- trackable, minimal foreshortening, good side-branch access
- biodegradable polymer
- coated with Biolimus A9 with precise release kinetics
- two stents can go into 7 Fr guide catheter

- has good clinical data
- allows recovery of endothelial function