



# **A LAD CTO of Retrograde Approach via Septal Channel: Channel Selection and Negotiation**

**Satoru Otsuji, M.D.**



**Higashi Takarazuka Satoh Hospital**

**Hyogo, Japan**



# Introduction

Septal channel is a preferred route for retrograde approach, because of its relative easy accessibility and fewer complication rate than epicardial channels. However, angiographically assessment is not always perfect, therefore, significant difficulty confronts in some cases.



# Objectives

Importance of collateral angiography from several projection.

How to select and negotiate complex channel.  
Practical use of twin lumen micro catheter.



# Case

74-years-old male

Stable angina (CCS 2)

## Previous History

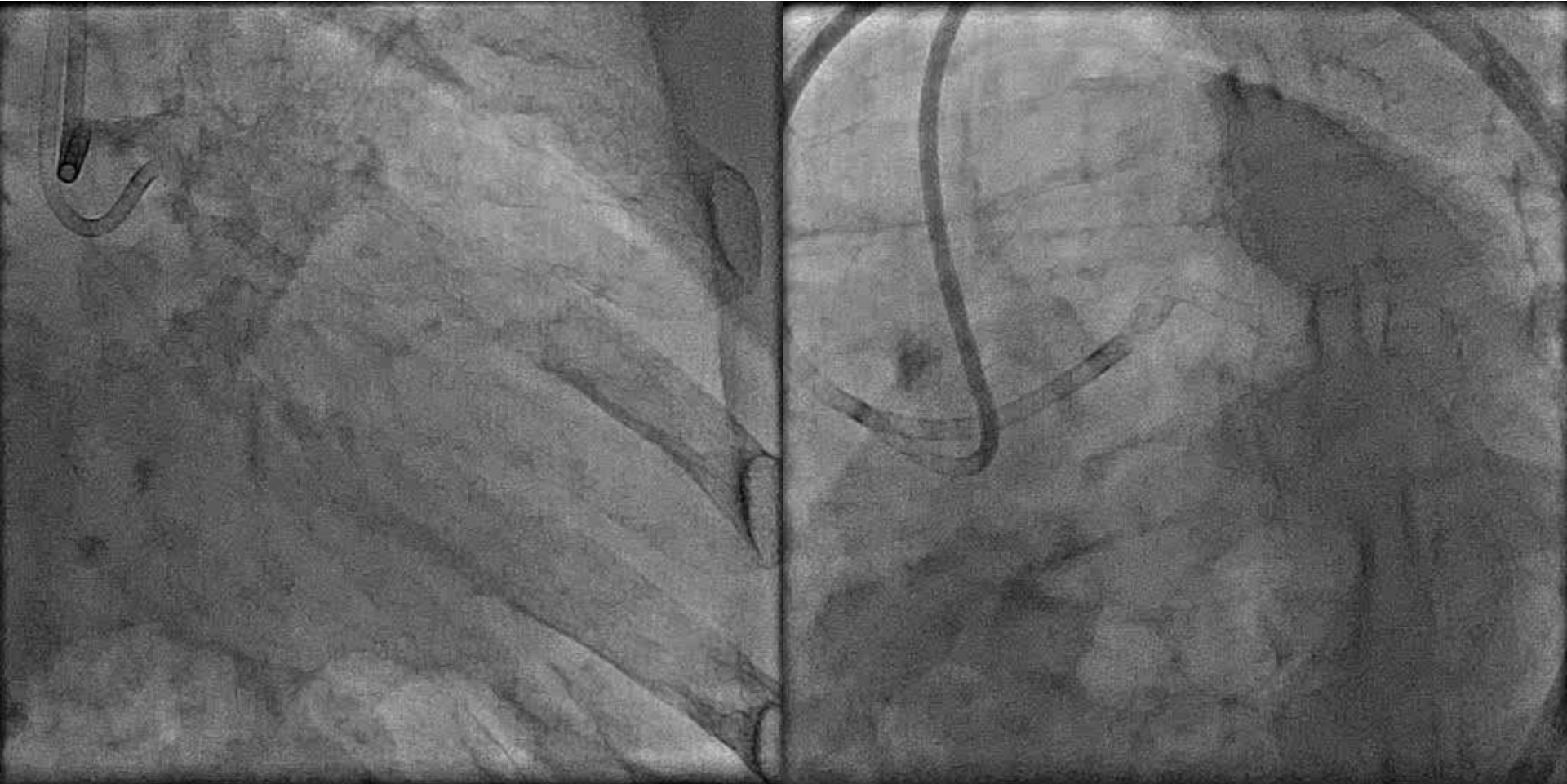
STEMI of RCA,

CAG: RCA #1 75%, #3 100% (Culprit), #5 50%, #6 100%,  
#9 100%, #11 75%, #12 90%

PCI for RCA and LMT to LCX (DES)

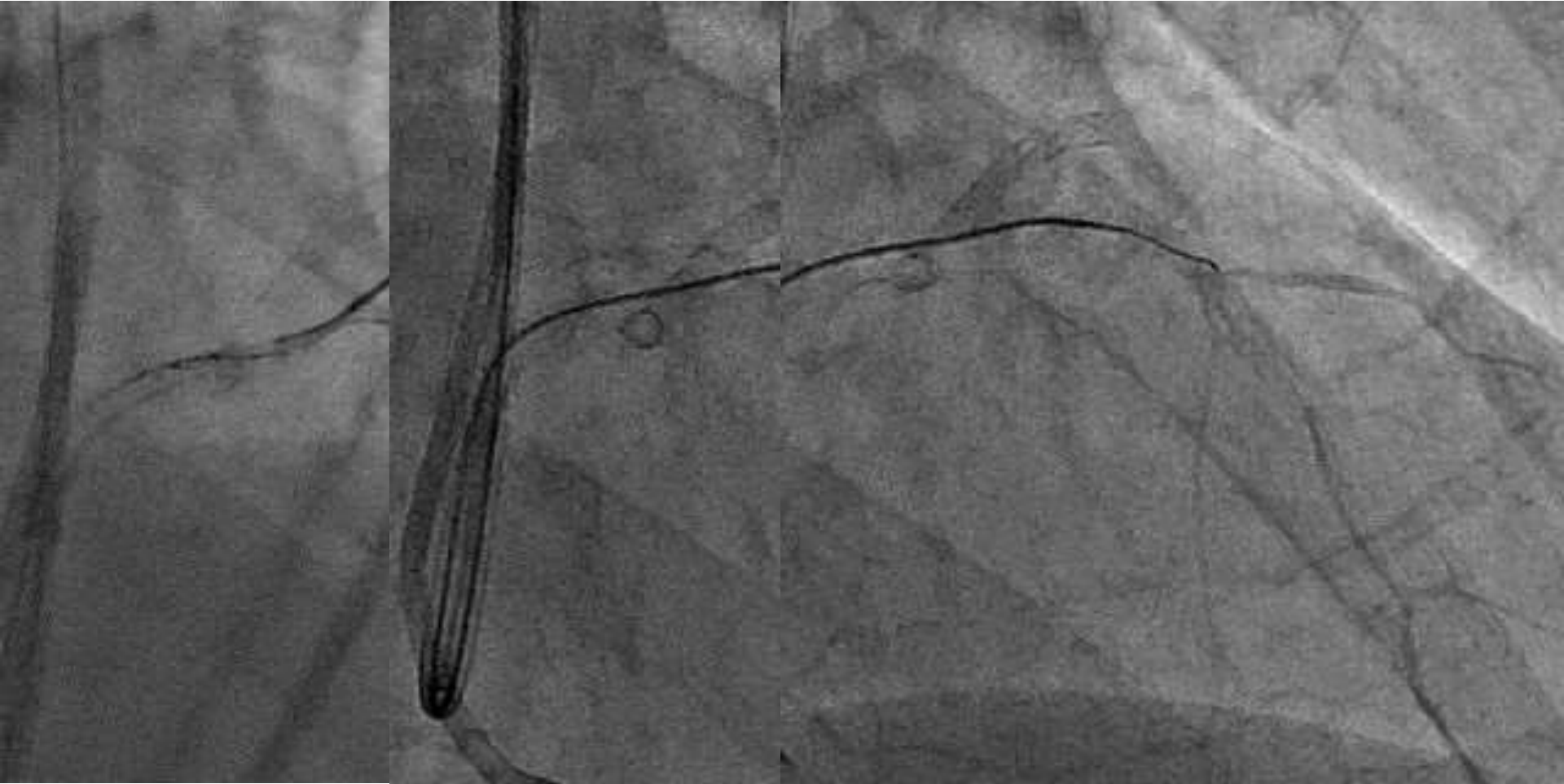


# LAD CTO



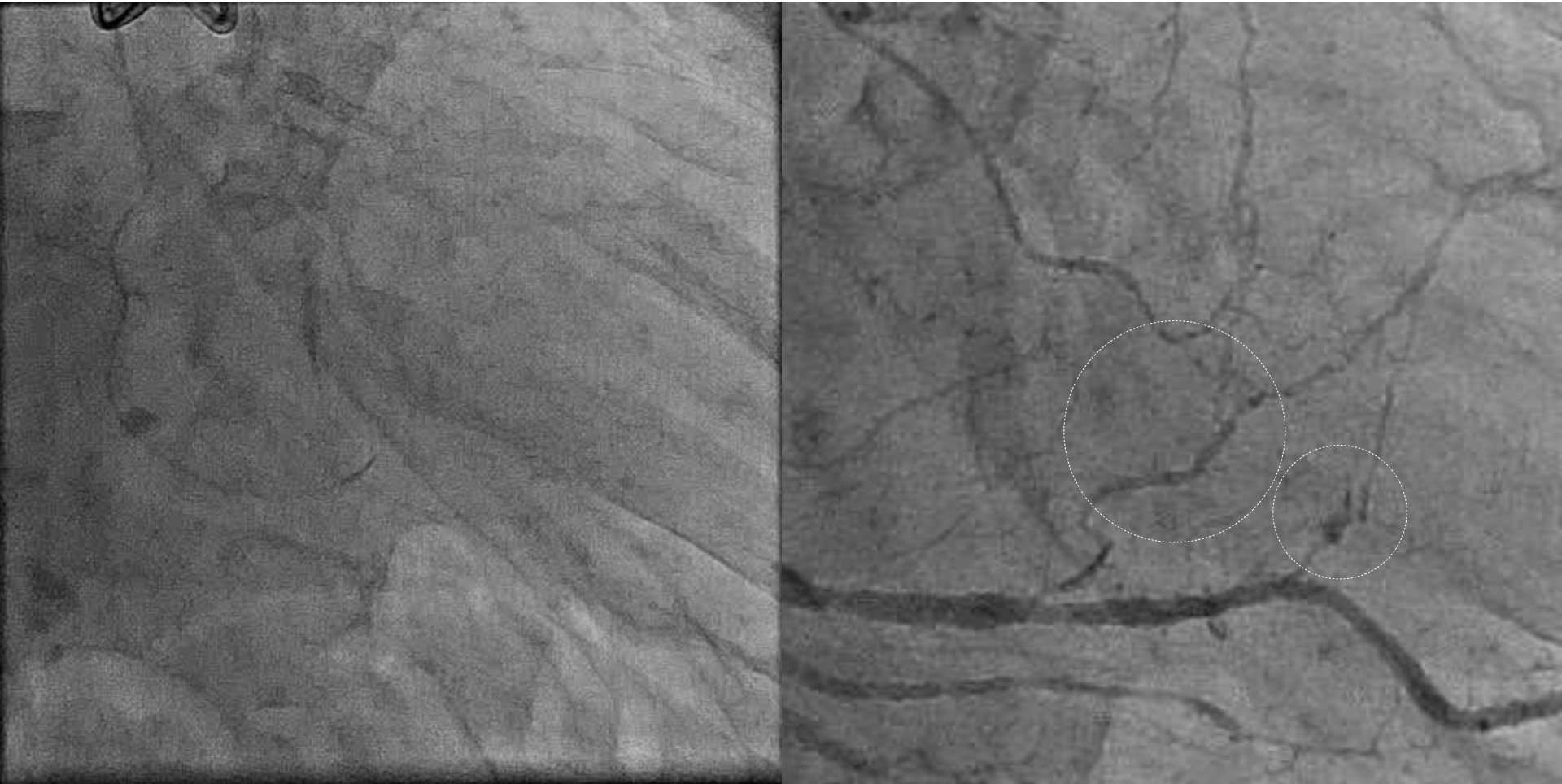


# Antegrade approach



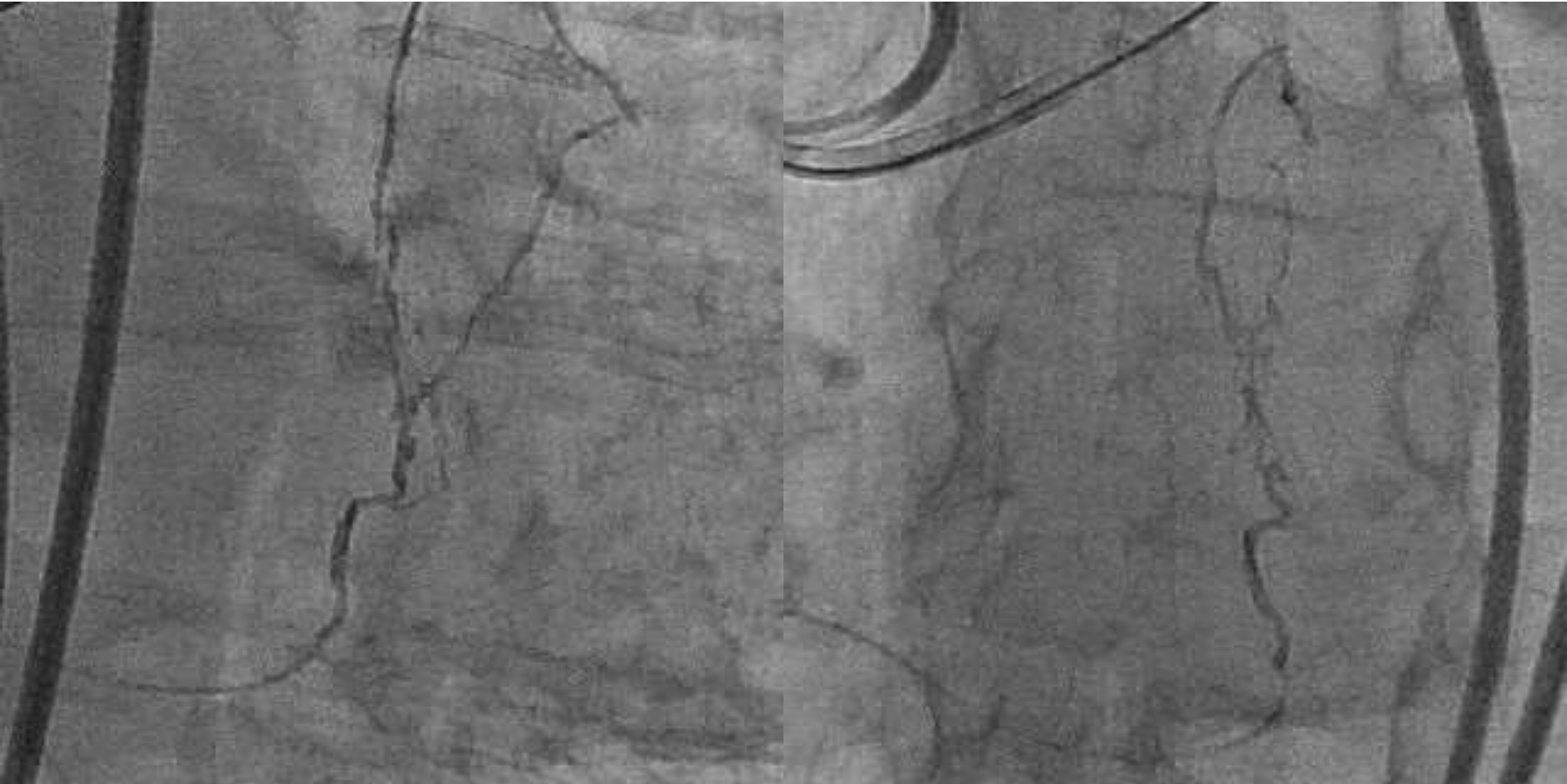


# Retrograde approach via septal





# Very complex anatomy

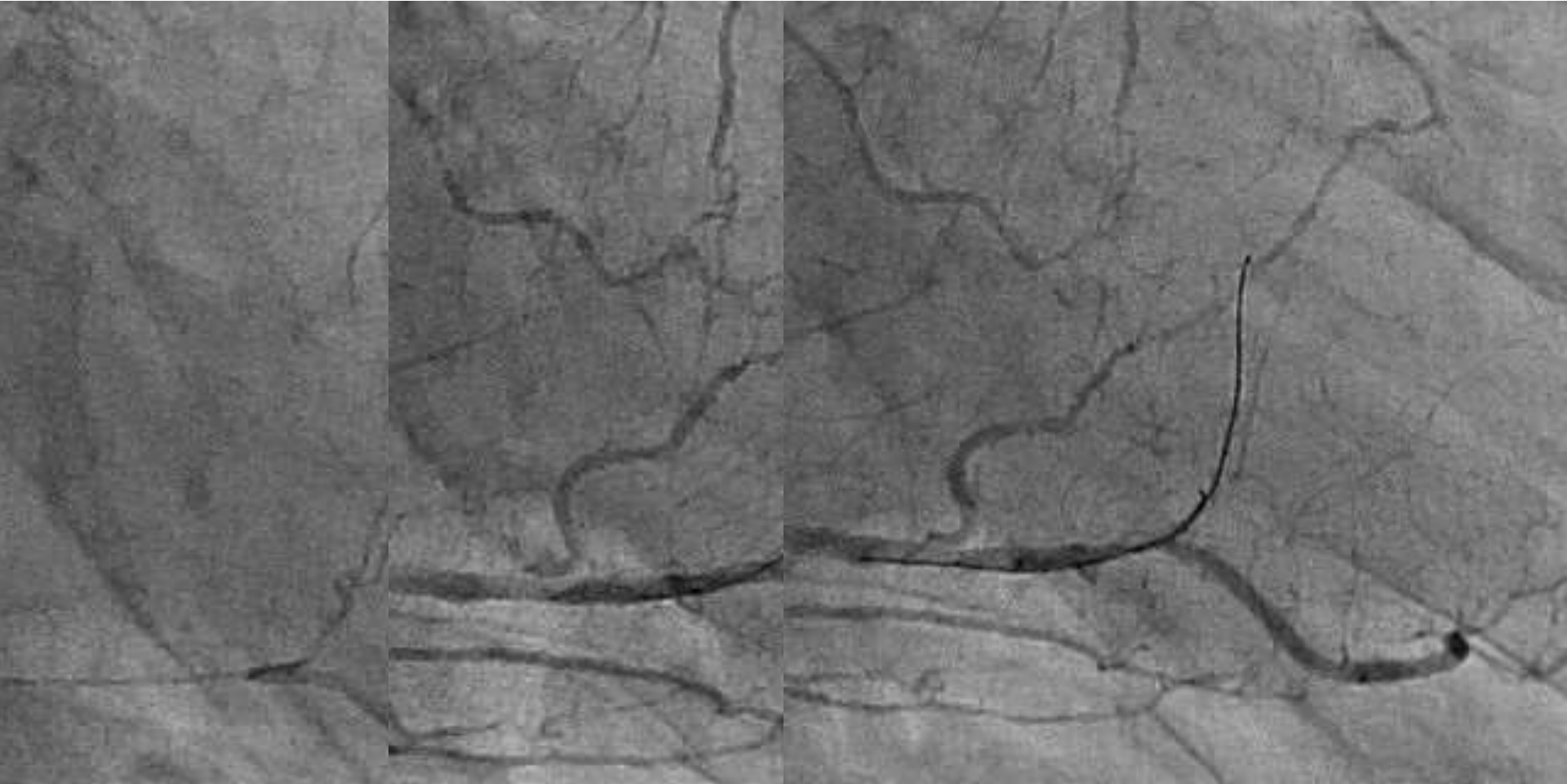


Severe tortuosity



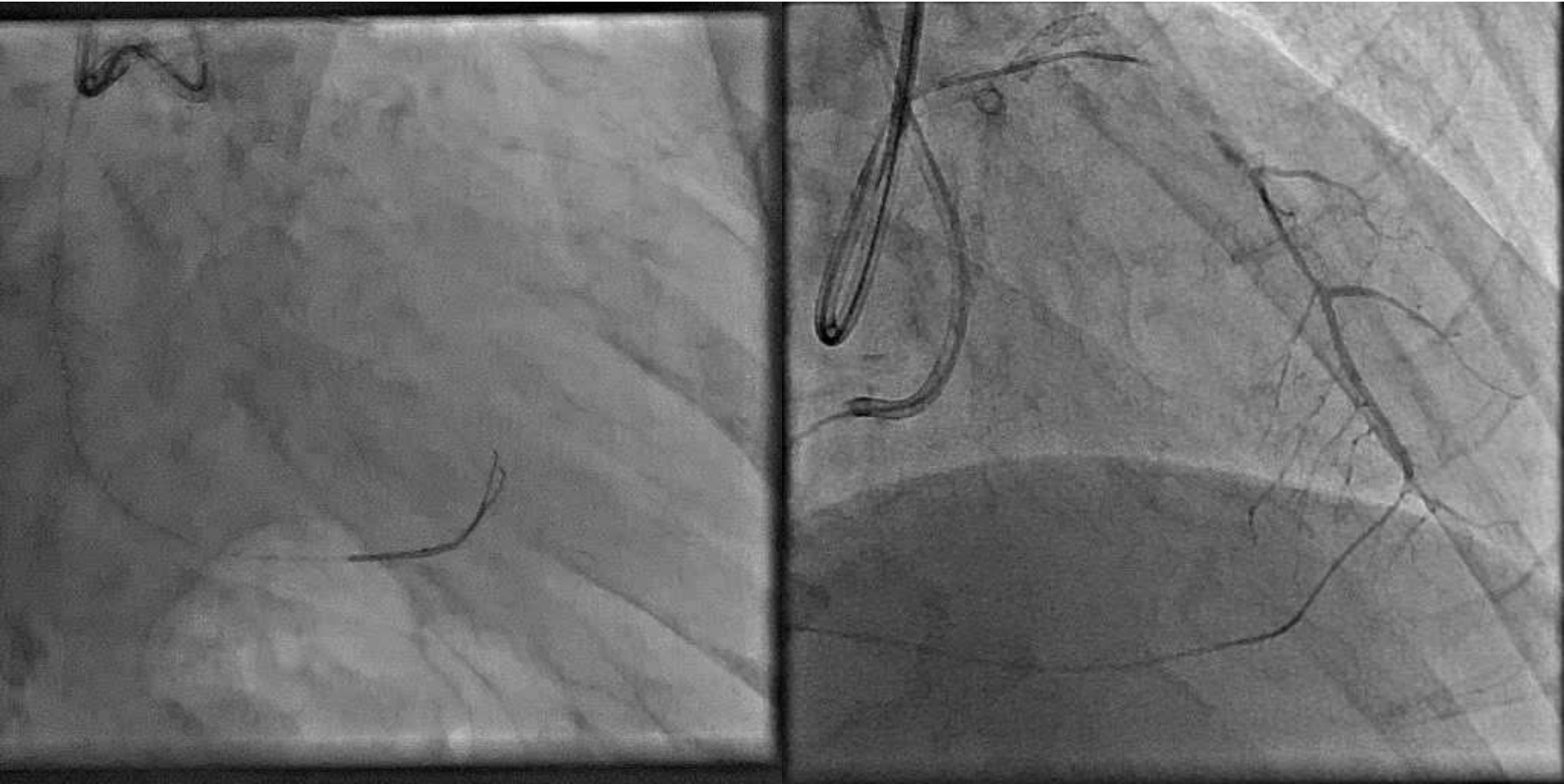


# Change to distal one

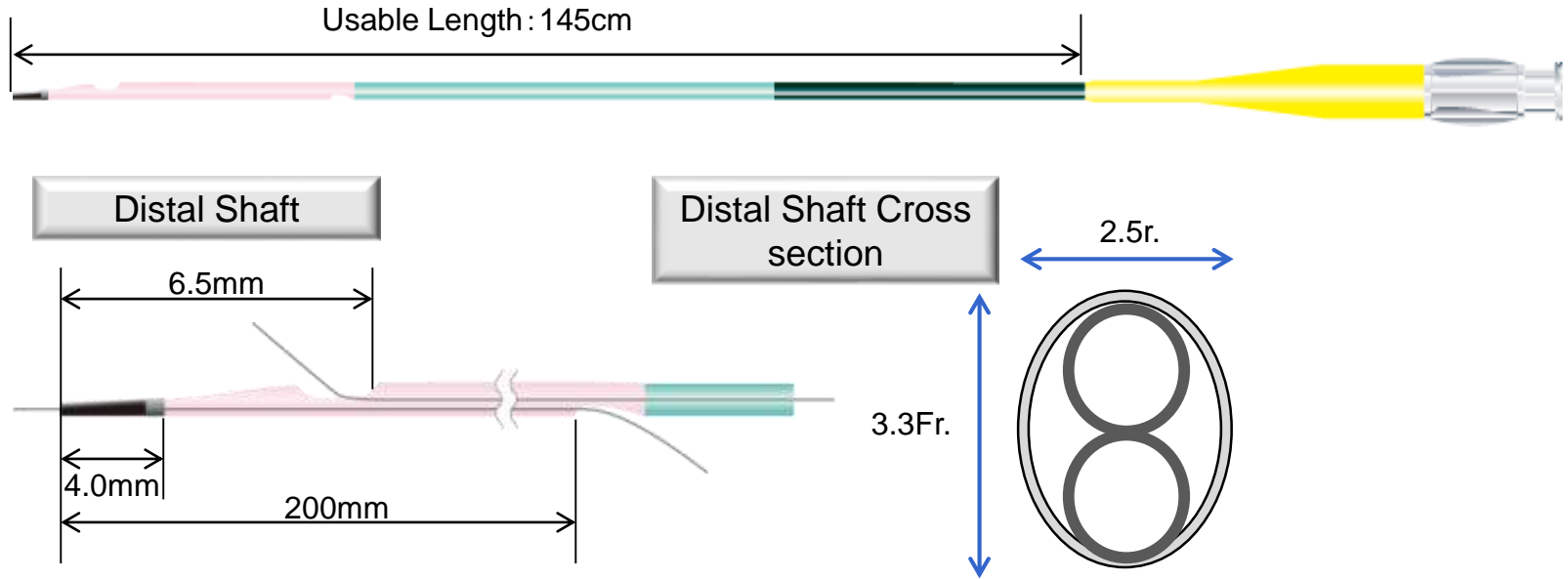




# Channel negotiation



# Asahi Sasuke<sup>®</sup> (structure)

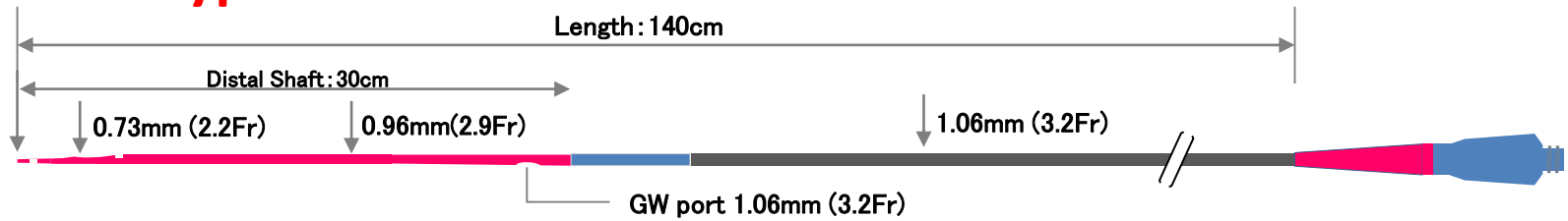


Outer Diameter			Inner Diameter		Usable Length	Recommended GW	Hydrophilic Coating Length
Tip	Distal	Proximal	Tip	Shaft			
1.5Fr. (0.50mm)	2.5Fr.-3.3Fr. (0.84mm-1.08mm)	3.2Fr. (1.05mm)	0.40mm (0.016inch)	0.43mm (0.017inch)	145cm	0.36mm (0.014inch)	38cm

# Kaneka Crusade Type R

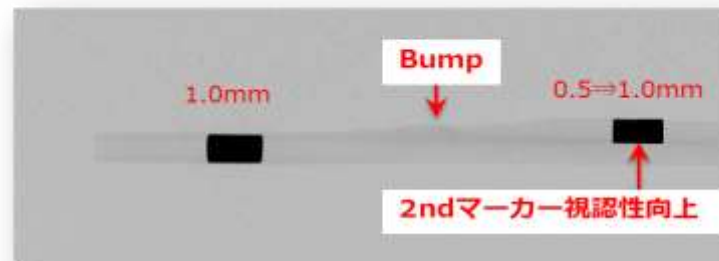
## Multifunctional Dual-lumen catheter

### Crusade Type R



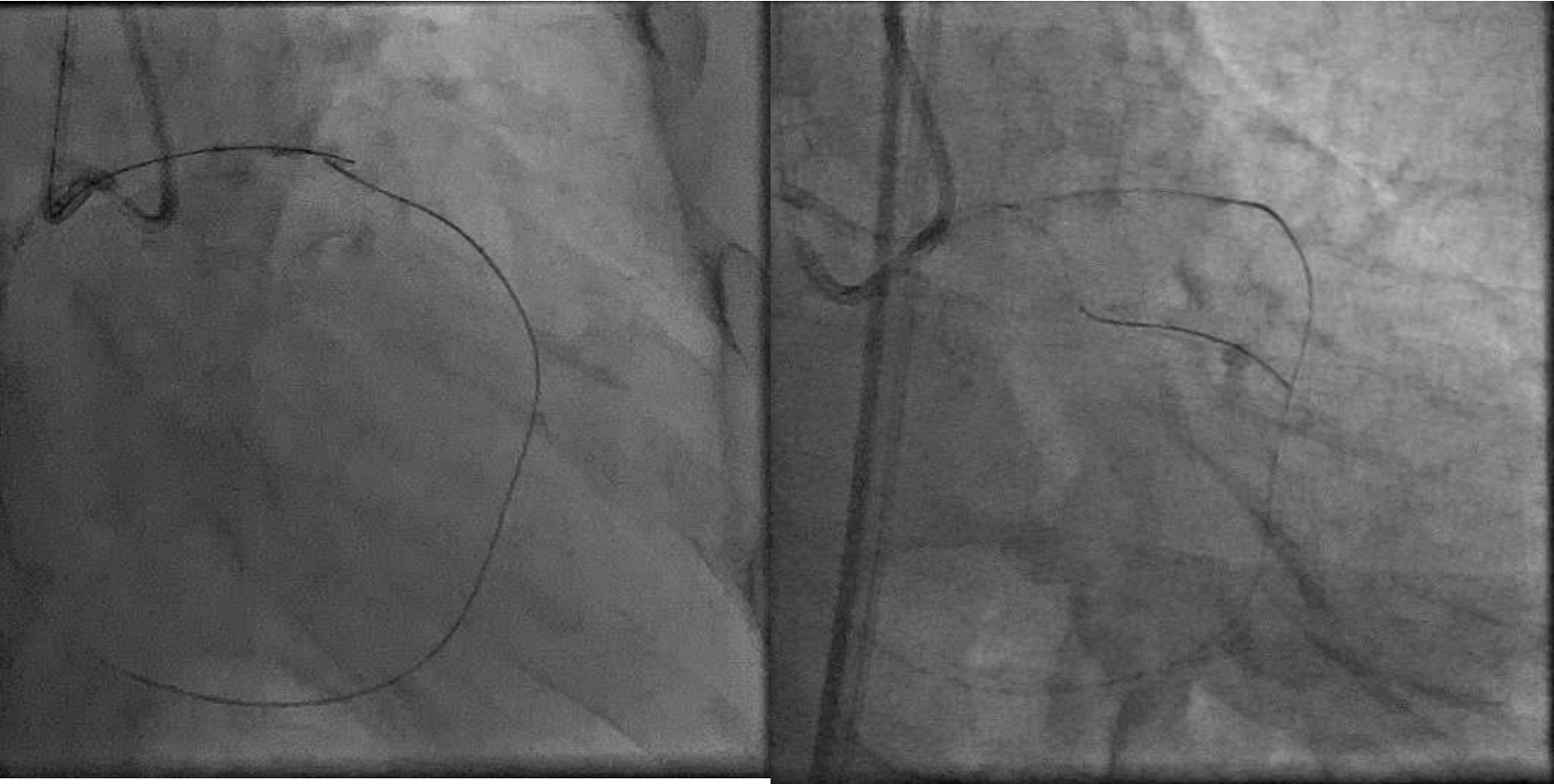
Effective length : 145cm

### Fluoro-Image



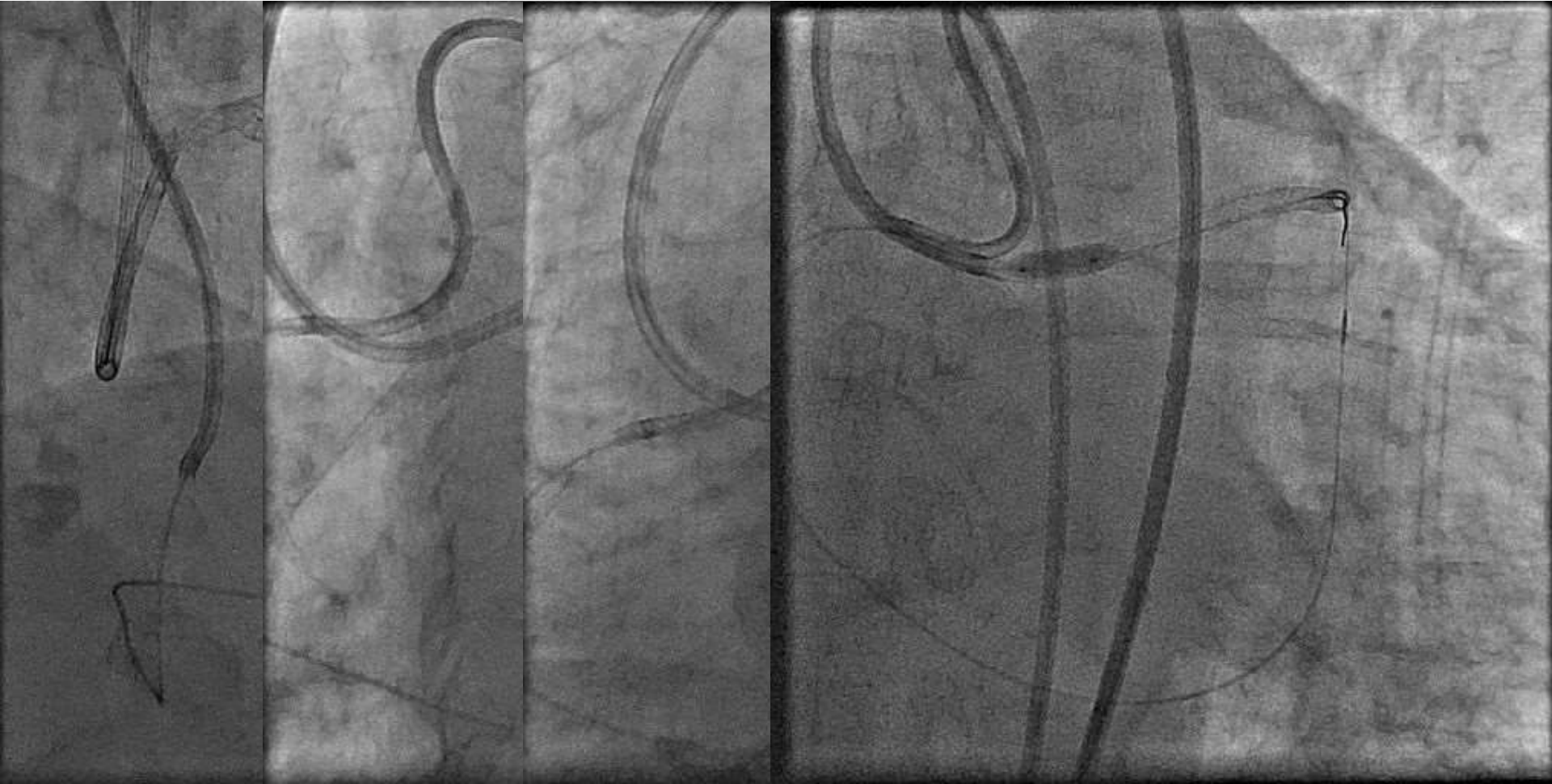


# Reverse CART



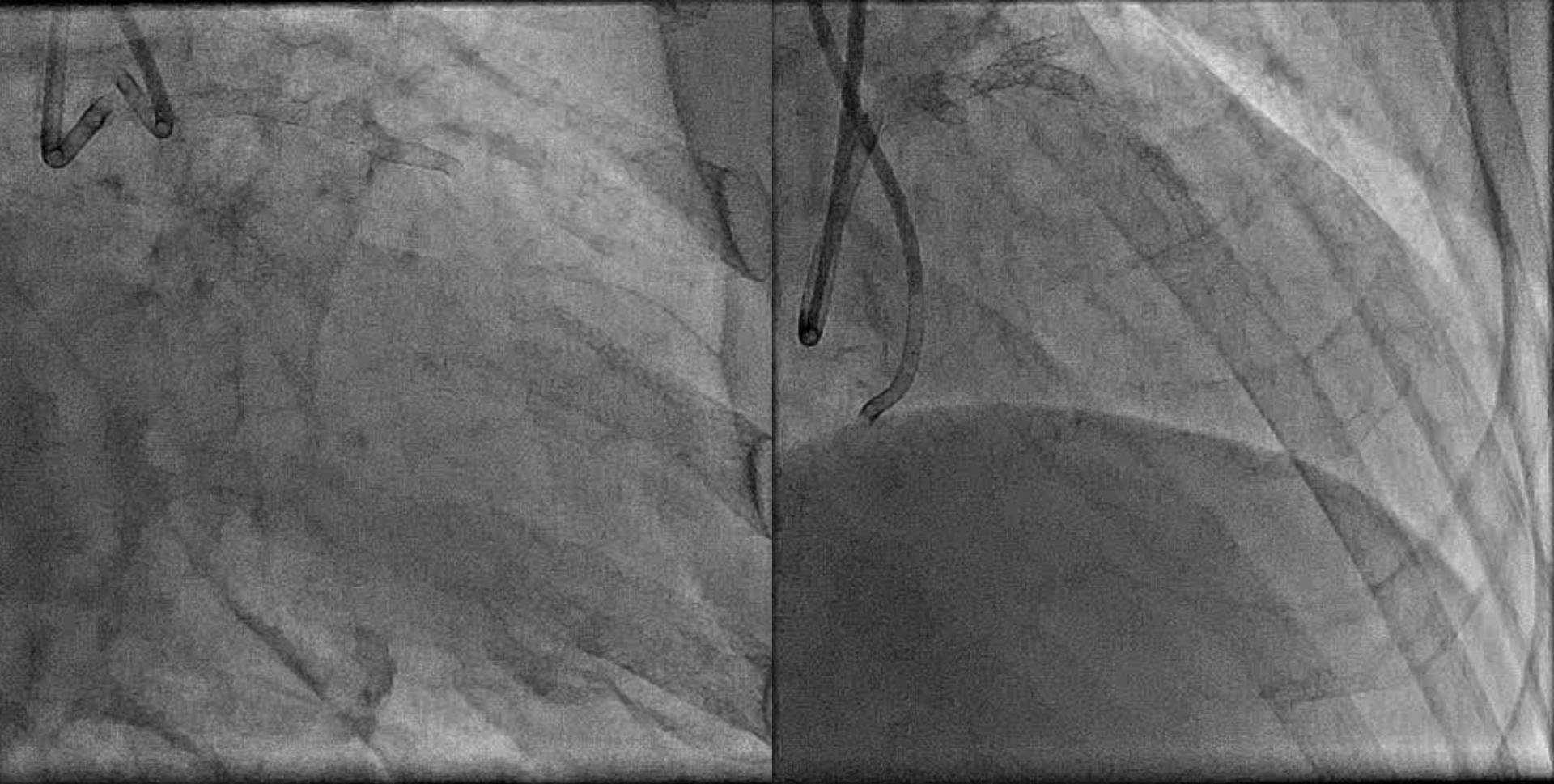


# Stenting





# Final Angiograms





## Message

Collateral anatomy is not always assessed by single angiography. Angiography from multiple projection is important to determine its difficulty.

Twin lumen micro catheter is useful to negotiate true connected channel. Guide wire in non connected channel is the land mark for second wire destination.