

TCTAP 2015: 2015/04/30 12:45~13:45, Room 104

How can we simplify complex PCI?

How do I manage my
most complex CTO?

SATORU SUMITSUJI MD. FACC.

Disclosure Statement of Financial Interest

Within the past 12 months, I or my spouse/partner have had a financial interest/arrangement or affiliation with the organization(s) listed below.

Affiliation/Financial Relationship

- ▶ Consulting Fees/Honoraria

Company

- ▶ **TERUMO**
- ▶ **ABBOTT**
- ▶ BIOSENSORS
- ▶ **BOSTON**
- ▶ **MEDTRONIC**
- ▶ GOODMAN IT
- ▶ **KANEKA**
- ▶ ASAHI INTECC
- ▶ **ORBUSNEICH**
- ▶ TOSHIBA MEDICAL
- ▶ SHIMADZU

What are the factors of difficulty in CTO-PCI?

- ▶ Wire cross
- ▶ Device cross

What are the factors of difficulty in CTO-PCI?

- ▶ Wire cross
 - ▶ Antegrade / Retrograde
 - ▶ Wires
 - ▶ Microcatheters
- ▶ Device cross

What are the factors of difficulty in CTO-PCI?

- ▶ Wire cross
 - ▶ Antegrade / Retrograde
 - ▶ Wires
 - ▶ Microcatheters
- ▶ **Device cross**

What are the factors of difficulty in CTO-PCI?

- ▶ Wire cross
- ▶ **Device cross**
 - ▶ Balloons
 - ▶ Tornus
 - ▶ Rotablator
 - ▶ Laser

What are the factors of difficulty in CTO-PCI?

▶ **Device cross**

- ▶ Balloons
- ▶ Tornus
- ▶ Rotablator
- ▶ Laser

Which is the easiest to handle???

What are the factors of difficulty in CTO-PCI?

▶ Device cross

▶ Balloons

▶ Tornus

▶ Rotablator

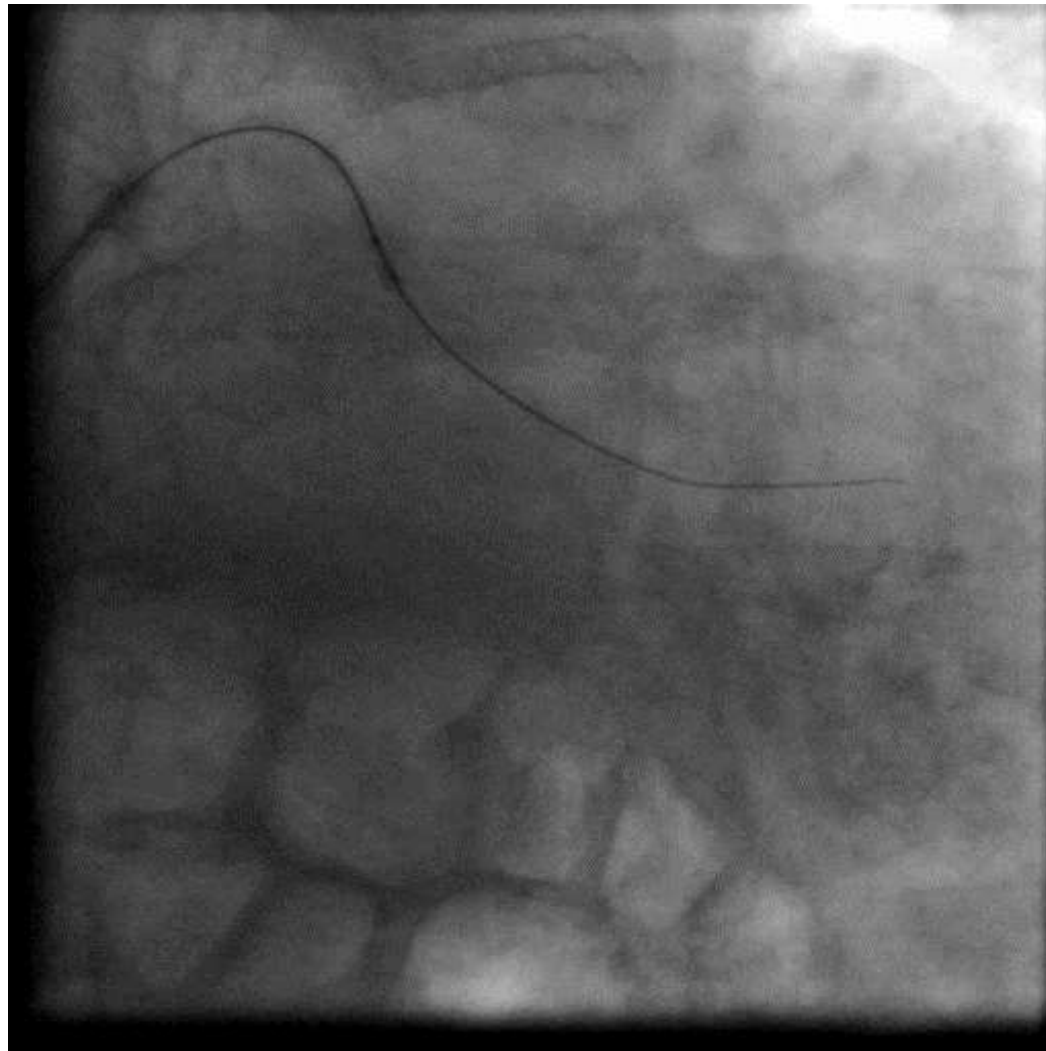
▶ Laser

Which is the easiest to handle???

Personal Historical Experience of BEST BALLOONS

- ▶ 14K
- ▶ World Pass
- ▶ Maverick
- ▶ Sprinter
- ▶ Ryujin
- ▶ Mini Trek

Antegrade Approach Case (previous heart failure + 3VD)



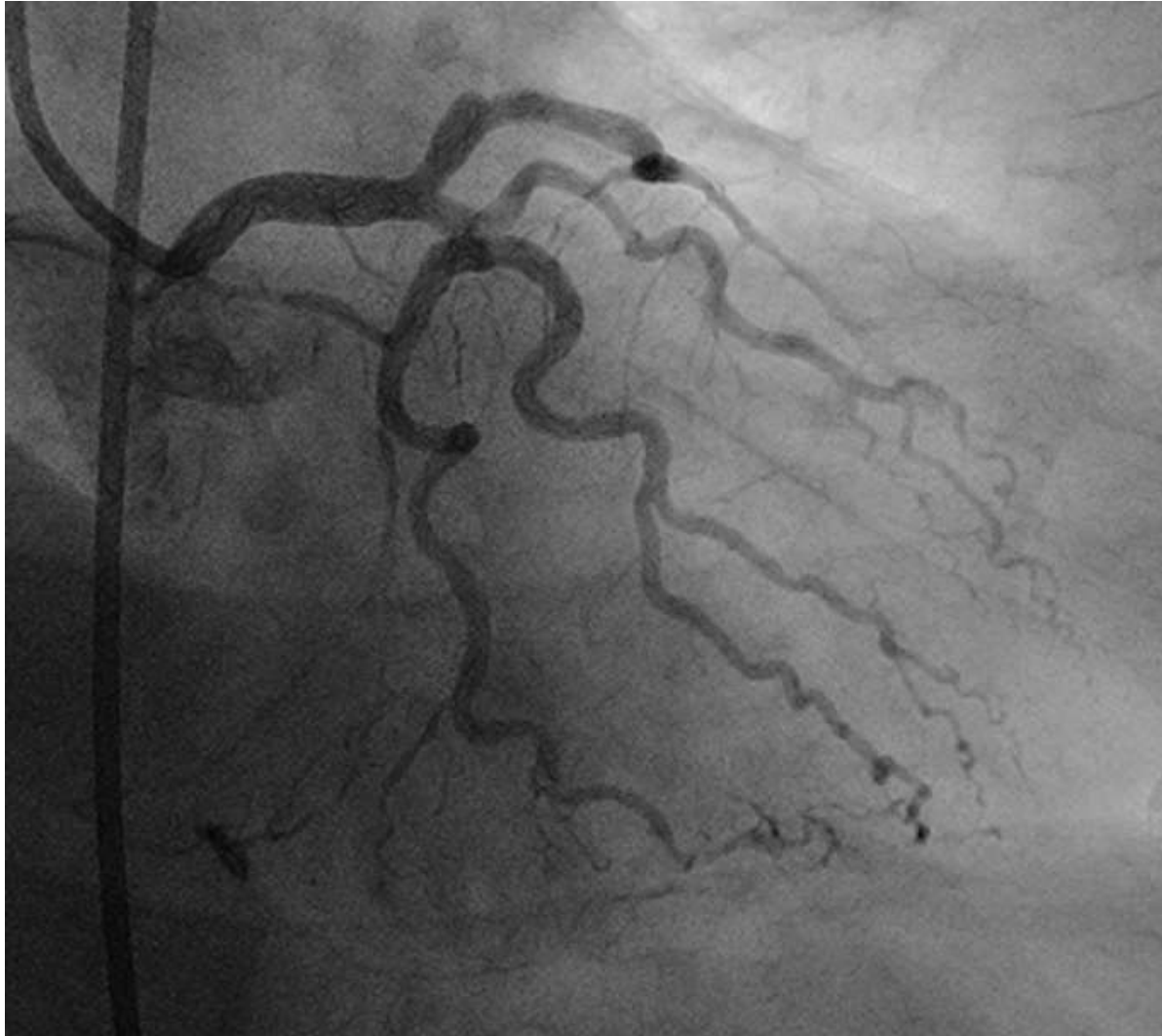
How to evaluate new balloon???

- ▶ Current No.1 Choice -> Fail to cross
- ▶ Try “new one”, and if.....
 - ▶ Success + big difference -> New No. 1
 - ▶ Failure / Success + small difference -> Re-assessment

Antegrade Approach Case (previous heart failure + 3VD)



Retrograde Approach Case (AMI anterior: 5 months ago)



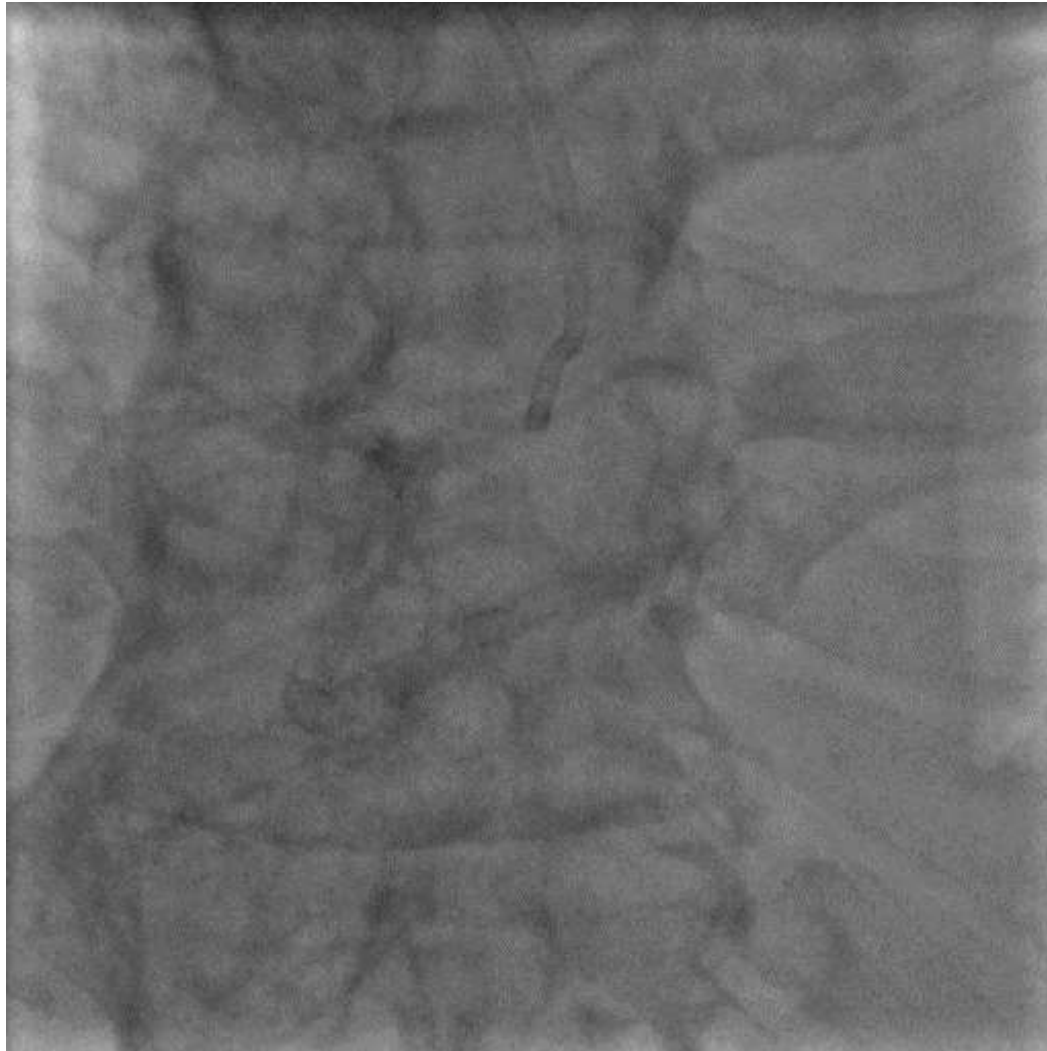
Retrograde Approach Case (RCA CTO-PCI: Channel)



Retrograde Approach Case (RCA CTO-PCI: antegrade + LCX DES)



Retrograde Approach Case (RCA CTO-PCI: stag 3)



Advantage of SAPPHIRE II PRO

Sub-zero Tip Technology for Smooth Lesion Entry

The well balanced sub-zero tapered tip has an ultra low profile and provides effortless entry through the tightest lesions.



Emerge

Sapphire II PRO



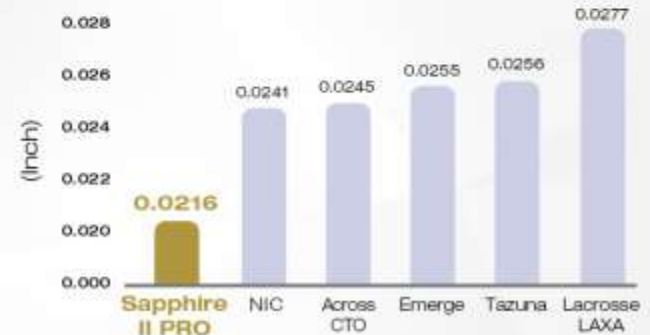
Lacrosse LAXA

Sapphire II PRO

XR Balloon Engineered for the Impossible

The proprietary "XR balloon" facilitates best-in-class crossability and recrossability without compromising durability and robustness.

Smallest Balloon Profile



Data on file

Advantage in SAPPHIRE II PRO

P-TECH Shaft for Optimal Pushability and Kink Resistance

The P-TECH Shaft is uniquely constructed with a small catheter profile that is kink resistant and facilitates excellent deliverability



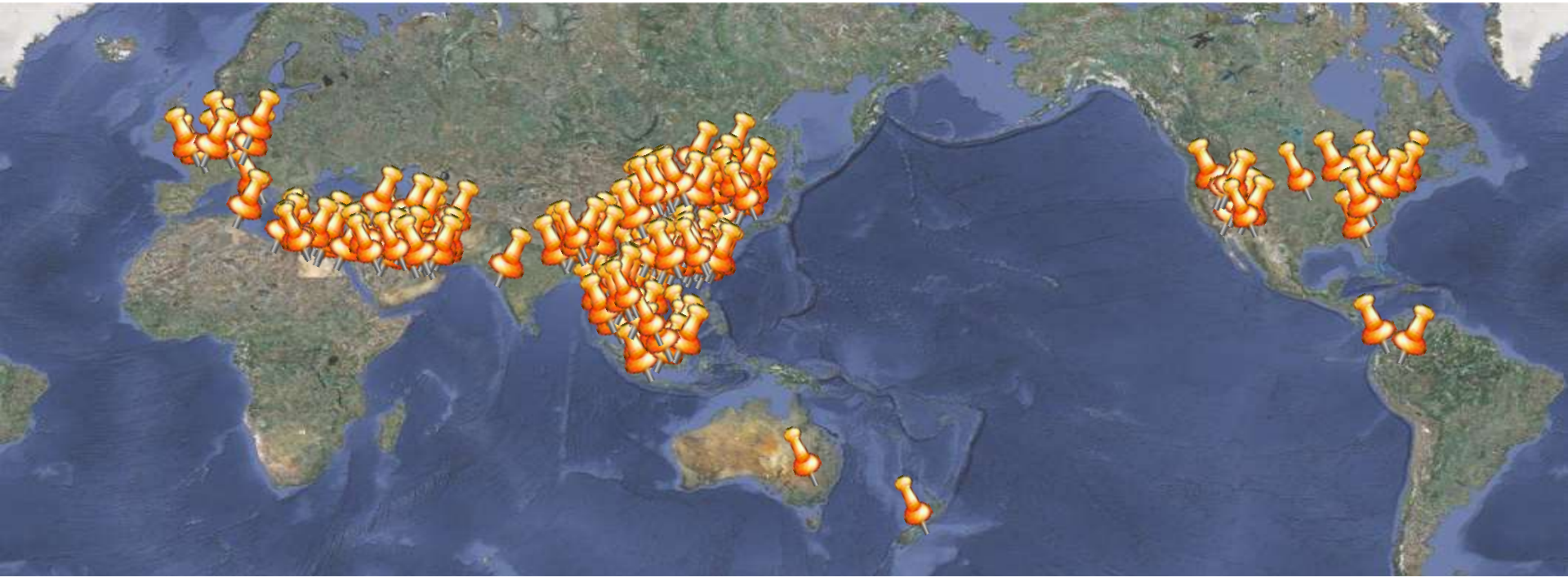
How to evaluate new balloon???

- ▶ Current No.1 Choice -> Fail to cross
- ▶ Try “new one”, and if.....
 - ▶ Success + big difference -> New No. 1
 - ▶ Failure / Success + small difference -> Re-assessment

Personal History of BEST BALLOONS

- ▶ 14K
- ▶ World Pass
- ▶ Maverick
- ▶ Sprinter
- ▶ Ryujin
- ▶ Mini Trek
- ▶ **Sapphire II**

【Invited Lecture & PCI Workshop Map】



2013 (33)

January	Taiwan
February	Egypt • Indonesia • USA
March	Hong Kong • Taiwan • China
April	Malaysia • Italy • Philippines • Bangladesh
May	UAE • KSA • Taiwan • China • Hong Kong
June	
July	Malaysia
August	China • Korea
September	Colombia • Switzerland • France • UAE
October	Indonesia • USA
November	Kuwait • Oman • Malaysia • Thailand • China
December	Singapore • Taiwan

2014 (39)

January	Korea • Singapore • China
February	India • UAE • Hong Kong • USA
March	Hong Kong • China
April	Taiwan • Bangladesh • Korea
May	Egypt • China • Kuwait
June	Jordan • Taiwan
July	
August	USA • Egypt • Jordan • UAE
September	USA • China
October	Malaysia • Kuwait • UAE • Korea • China
November	China • Egypt • Colombia • UAE • Indonesia
December	Bangladesh • Singapore • Kuwait • UAE • Indonesia • Tunisia

商品名	サイズ	長さ	品番	数量	4/21 未のシ ン積上 り購入	4/16貨品・追加分 【トバイ・クエード】				4/13貨品分 【トバイ・クエード】				
						Dr.	品番	数量	品番	Dr.	品番	数量	品番	
PROGRESS 200T		190cm			0									
Confiance Pro 12		180cm			0									
Conquest Pro			201709	10	10									
Conquest Pro 12			201602	0					2	2		0		
			201706	5	10									
			201708	5										
Conquest Pro 8-20		180cm	201712	2	2				2	1		1		
RC2		880cm	201505	1					1	0		1		
			201706	16	44				9	1		8		
			201707	17										
			201802	10		10								
SION			201606	2	22				3	1		2		
			201708	10					2	1		0		
			201710	10										
SUJCH			201706	4					5					
			201708	27	46				15					
			201802	15		15								
			201606	9	9									
SUJCH 白		190cm	201707	4	4									
SUJCH ストレート			201801	0	0					1				
SUJCH プリシェイブ			201801	0	0					4				
Extension		165cm	201607	1					1					
			201612	0					1					
			201705	8	19			3	0		3			
			201707	5										
Case 1st		190cm	201709	5										
			201606	1	7									
			201705	1										
Case 2nd			201706	5										
			201705	0										
			201707	7							5			
			201708	0	20									
Case 3rd			201709	10										
			201711	8										
			201705	0										
		201707	5											

GW

BA

SAPPHIRE II

商品名	サイズ	長さ	品番	数量	4/21 未のシ ン積上 り購入	4/16貨品・追加分 【トバイ・クエード】				4/13貨品分 【トバイ・クエード】						
						Dr.	品番	数量	品番	Dr.	品番	数量	品番			
Coramir 135		185cm			0											
Coramir 150		150cm	201807	0												
			201507	1	18							1	0	1		
			201510	1								1	0	1		
Cruade			201605	1												
			201606	4												
			201607	1												
			201609	10												
			20170521	0												
			20170721	1	17								4	3	1	
Cokatte			20170520	2									3	1	2	
			20171021	4						3	1					
			20171120	10												
			201505	0												
ファイナクロス MC		150cm	201704	5	18								2	1	1	
			201705	8												
			201508	0												
ファイナクロス GT		150cm	201506	1	5											
			201507	1												
			201605	1												
			201609	2												
Twin-Pass			201608	0												
			201608	14	34					3	3		0	15	4	11
			201610	2						2						
Canwell		185cm	201611	13												
Guide Liner 6F			201704	0												
			201710	18	18									5	3	2
			201609	0												
トレス 2.1Fr			201609	0										1	1	0
			201610	4	9					2	2		0	4	0	4
			201612	5						5						
トレス 2.6Fr					0											
								3				37				
SAPPHIRE 0		140cm	201201	0												
			20160811	2	16									3	1	2
			20180810	4							2	0		2		
		20181202	10													

BA

SAPPHIRE 0

Summary

- ▶ Simplifying a complex procedure is one of the most important key to success.
- ▶ In complex CTO-PCI, better balloon crossability could simplify the procedure.
- ▶ “Sapphire II (1.0 mm)” is one of the best balloons in today’s available choices and one should definitely consider it to help simplify the procedure and increase procedural success.

China



New Zealand



UAE



Thailand



Vietnam



Malaysia



Malaysia



Libya



Bangladesh

