

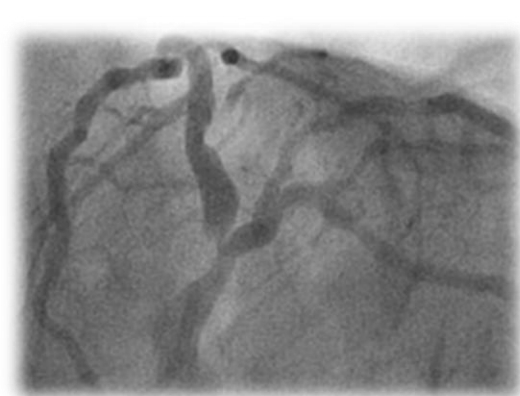
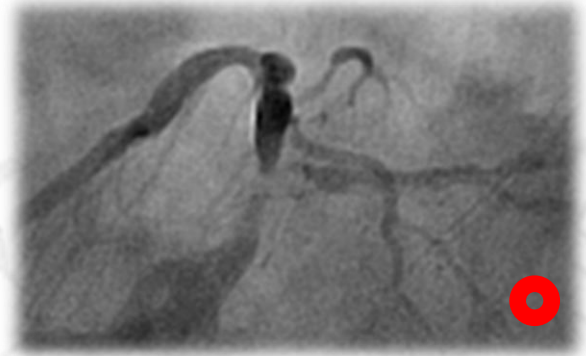
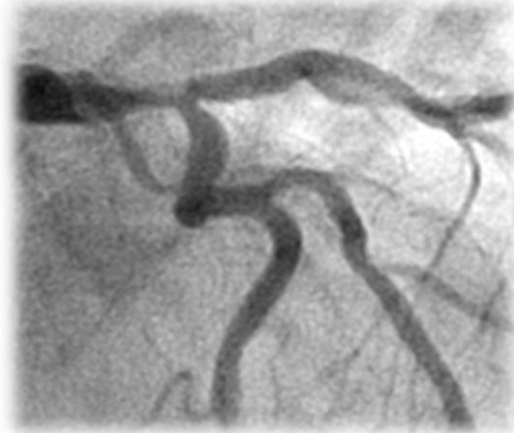
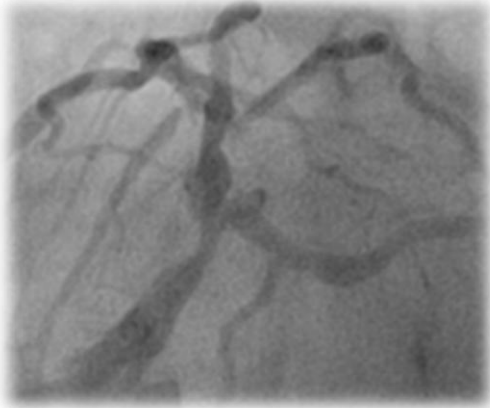


Bifurcation Stenting with Functional Evaluation

Chang-Wook Nam, MD, PhD

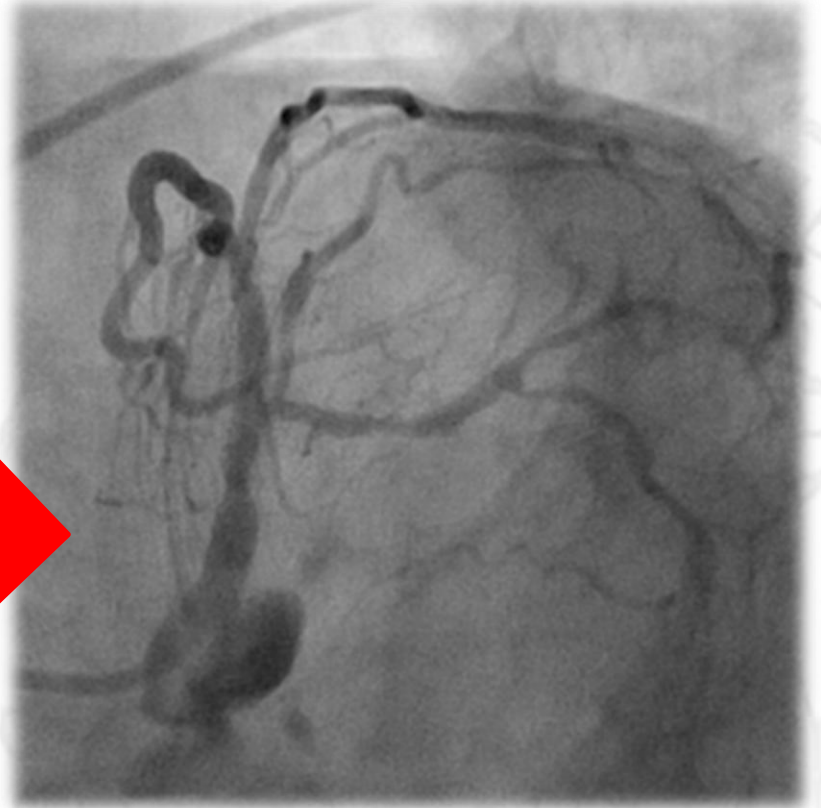
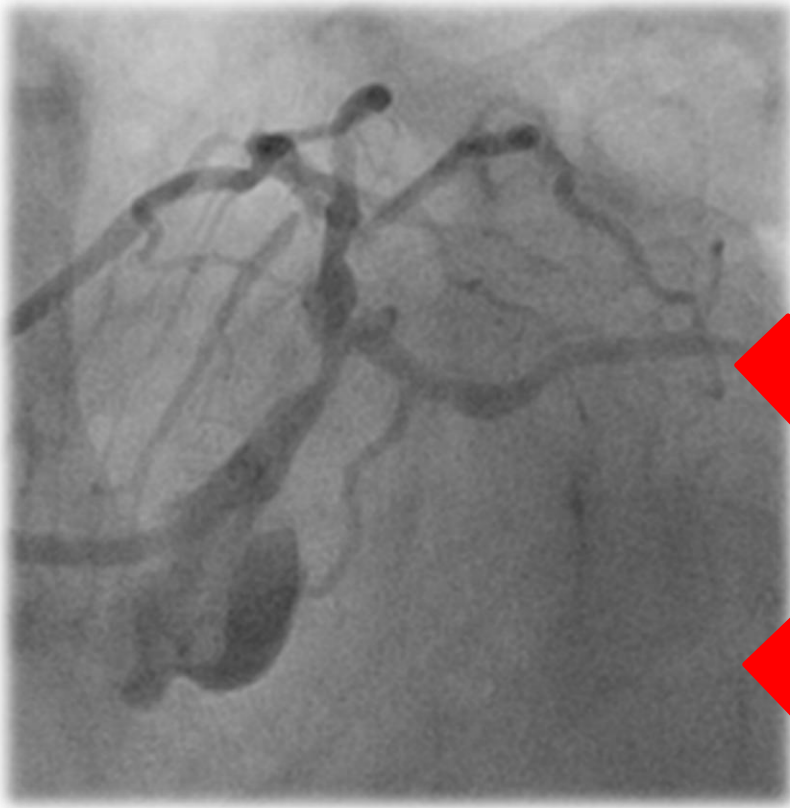
Keimyung University Dongsan Medical Center, Daegu, Korea

How to Treat LM bifurcation?



Sometimes, we need complex procedure

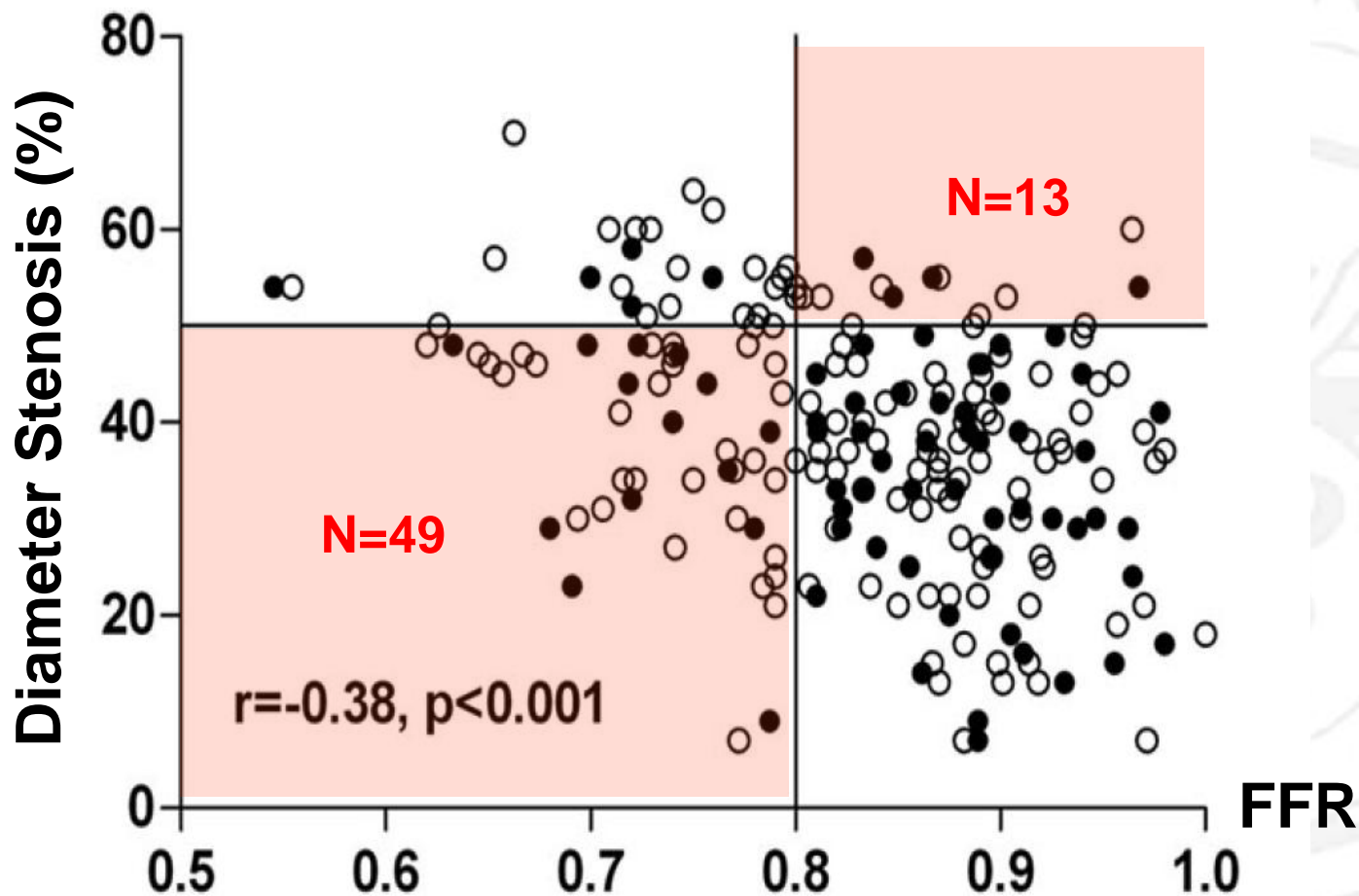
1st Cases: Which LM is significant?



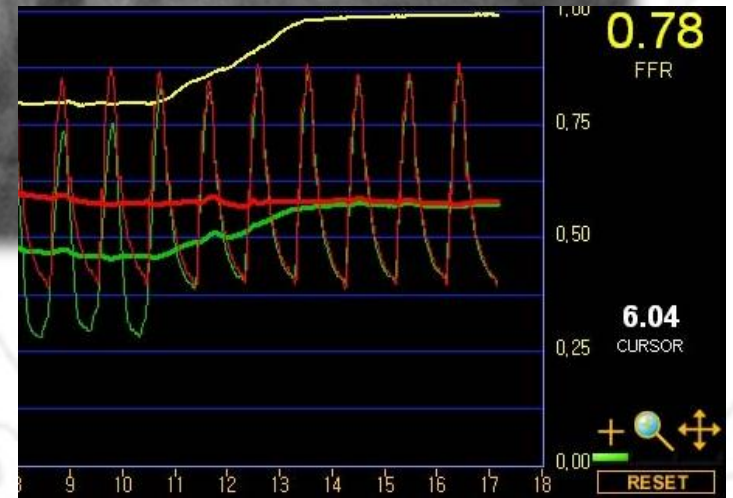
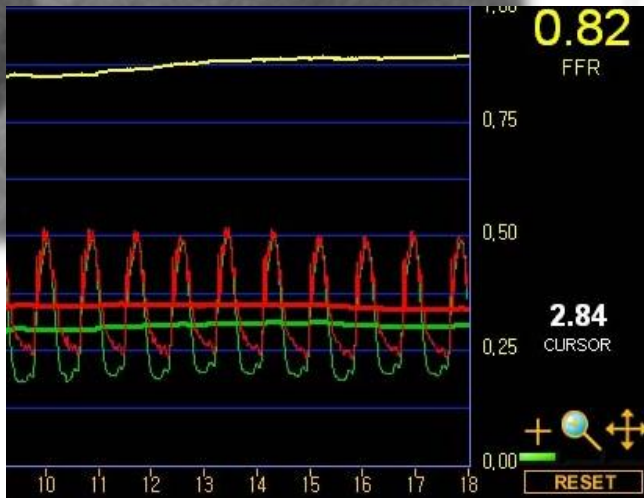
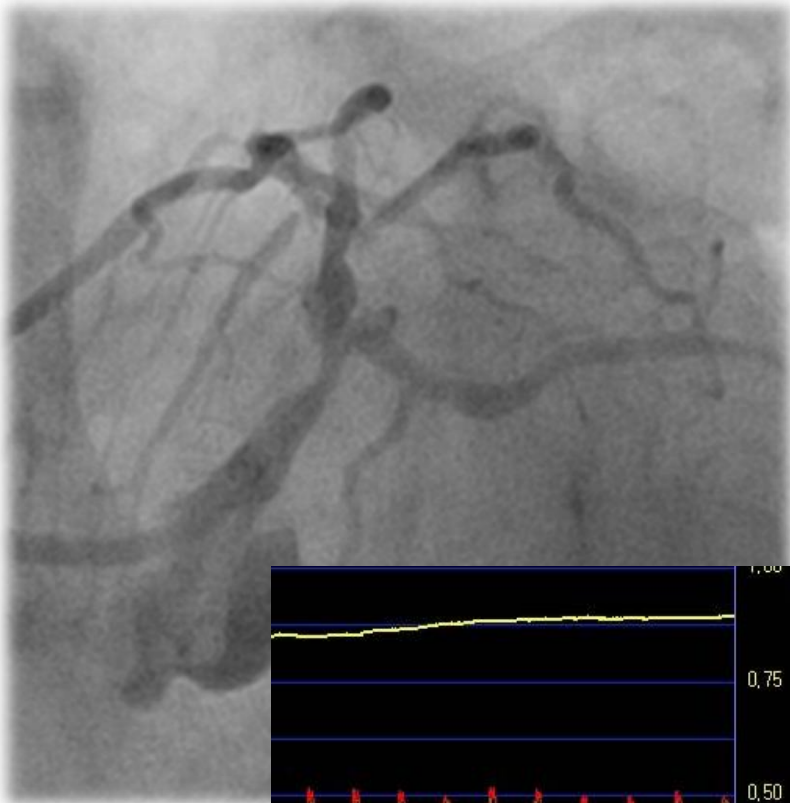
Angiography vs. FFR in LM Disease

213 patients with equivocal left main lesions

Function-Anatomy mismatch: 30%

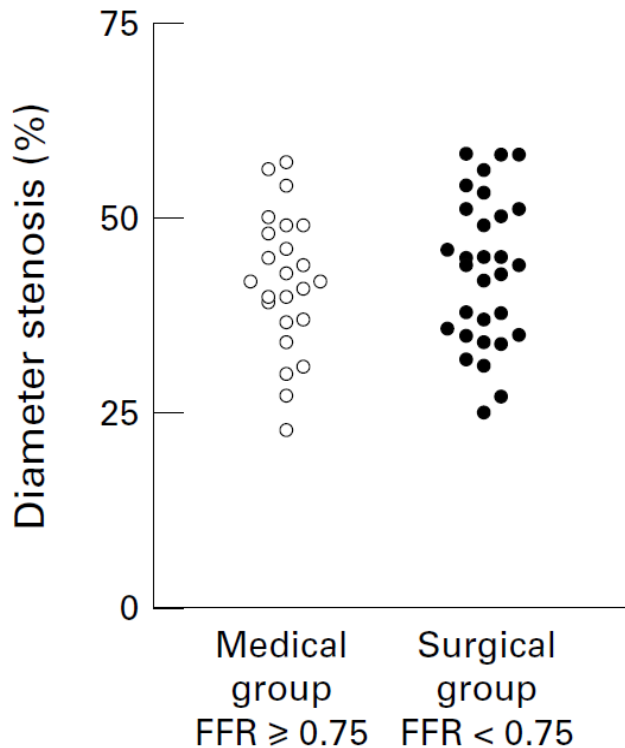


1st Cases: Which LM is significant?

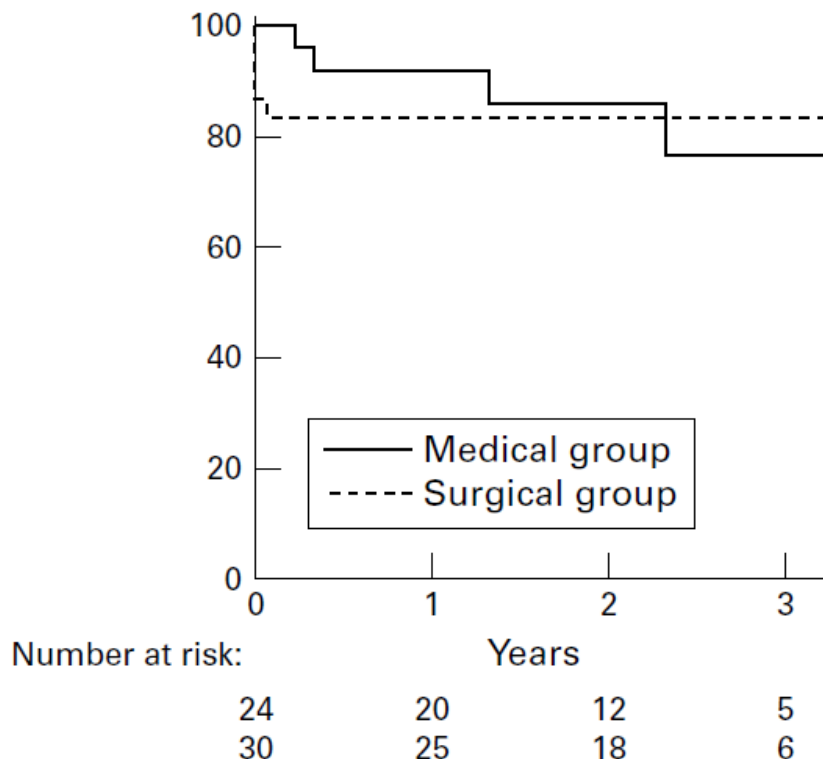


FFR guided treatment in LM Disease

54 patients with equivocal LM lesions



B Freedom from any event during follow up



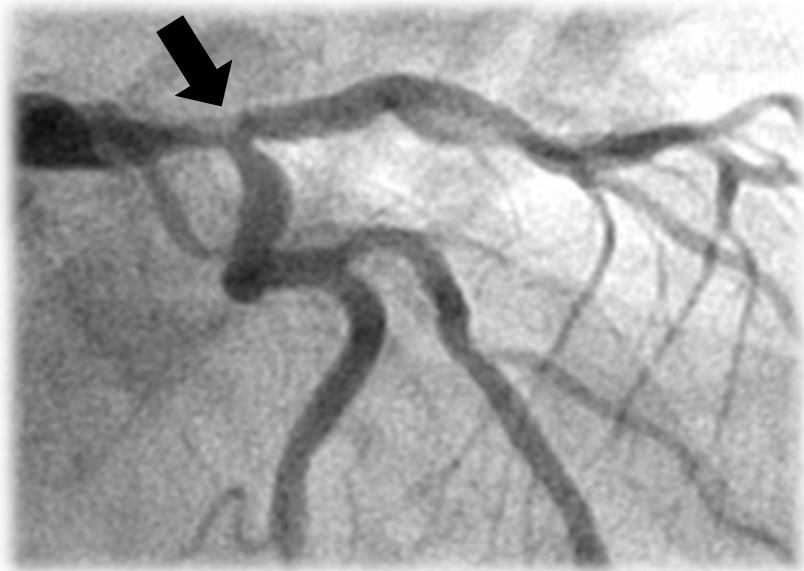
1st Issue

Safety & Efficacy issues for Defer

63/Male, Angina for 5 months

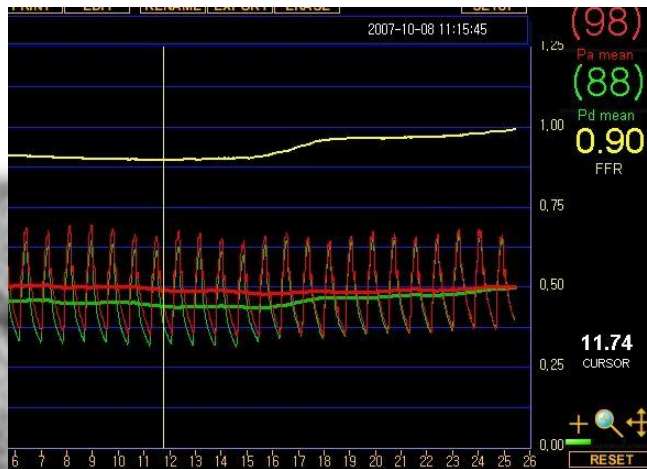
CVRF: HTN, DM, CVA

TMT: (+), 7.5 METs



***How can we evaluate
jailed osLCX ?***

FFR-guided PCI in Jailed LCXOs



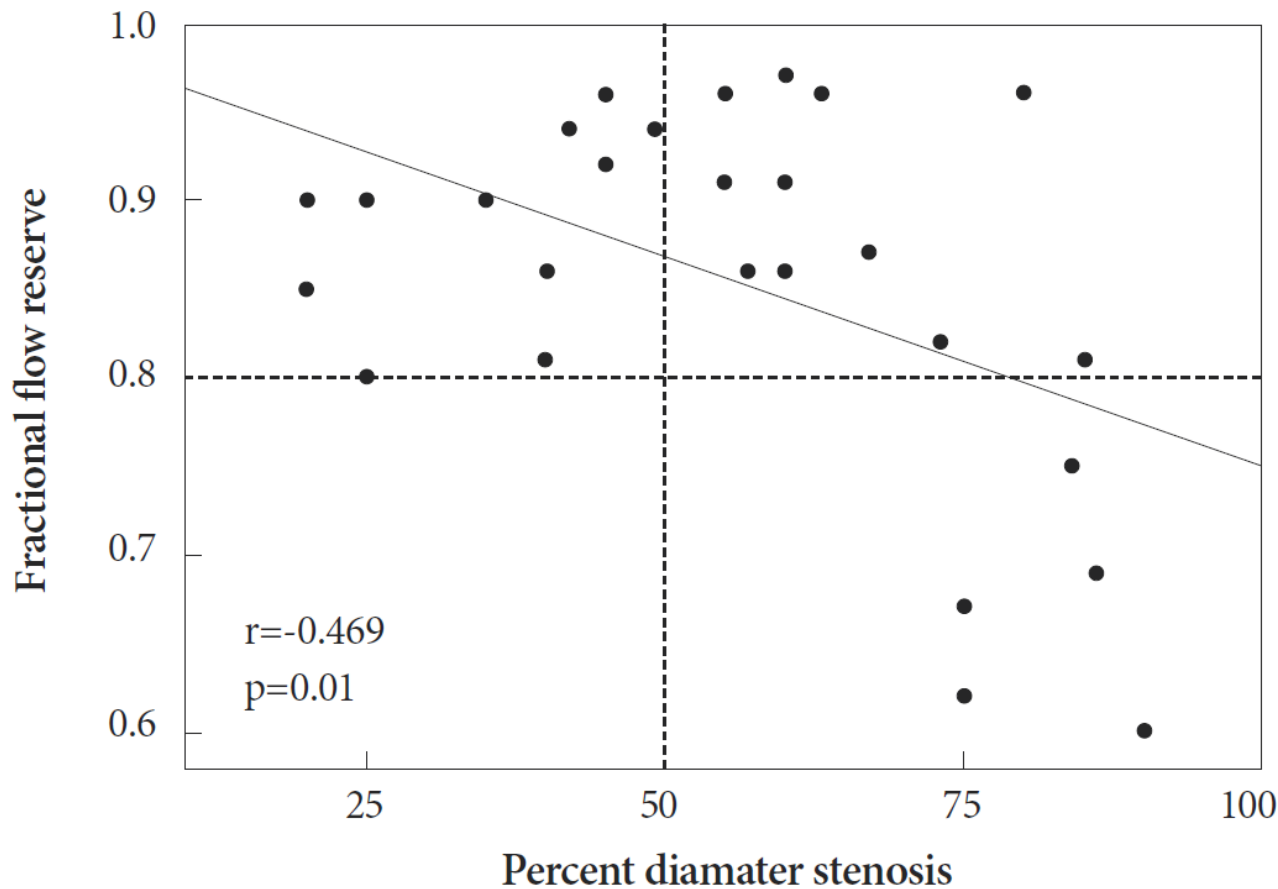
Why?

FU @ 8 mo

Angiogram



Real state



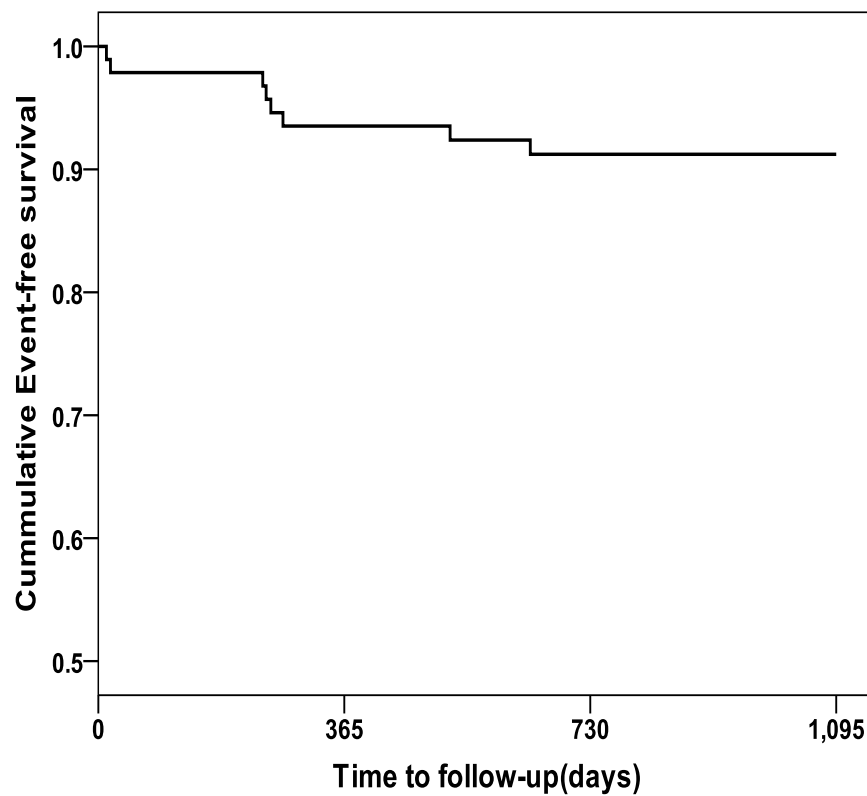
Prognosis of Crossover stent in LM



98 patients after
single LM crossover stenting

2nd Issue

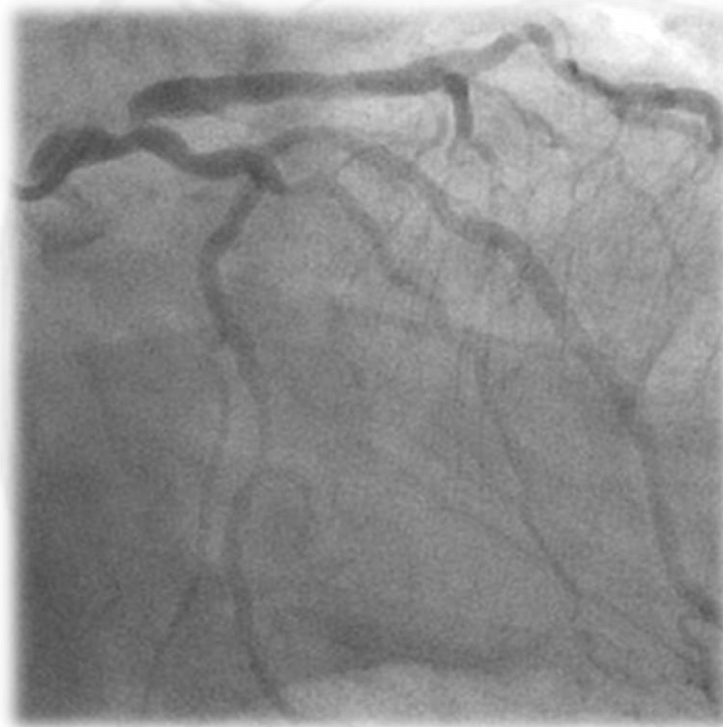
**Safety and Efficacy of
FFR-guided intervention
in the jailed ostial LCX
lesion**



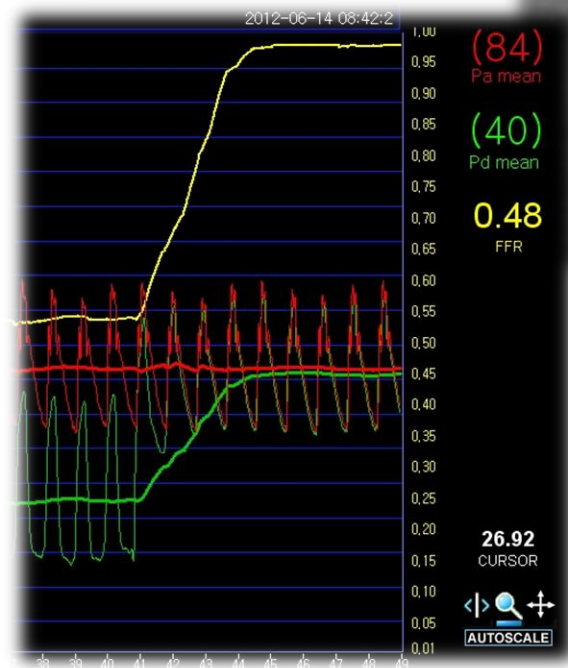
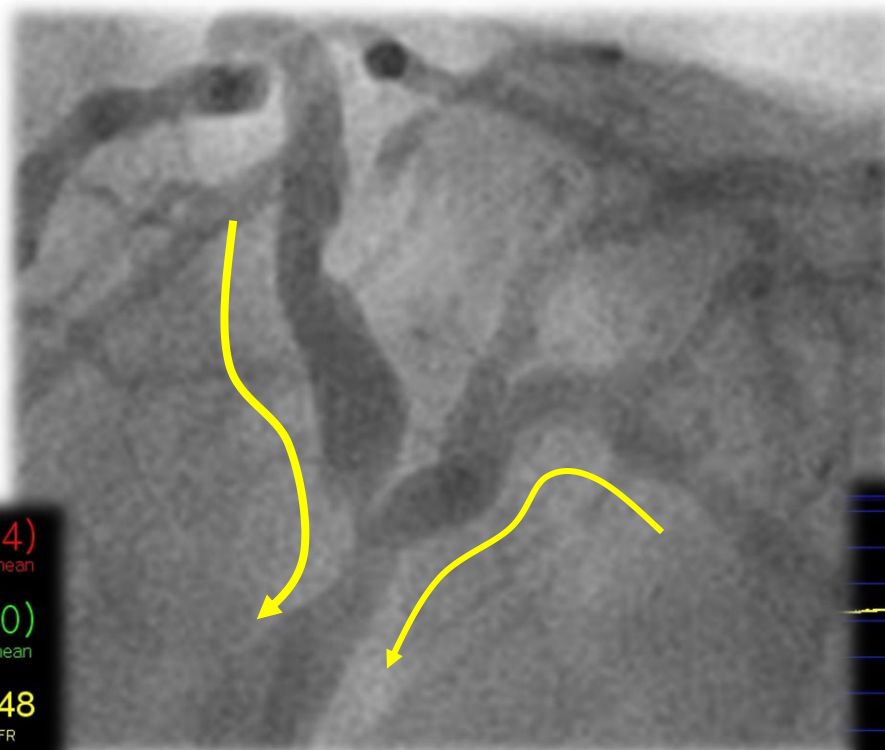
62/Male, Angina for 1 month

CVRF: HTN, Dyslipidemia, Smoking

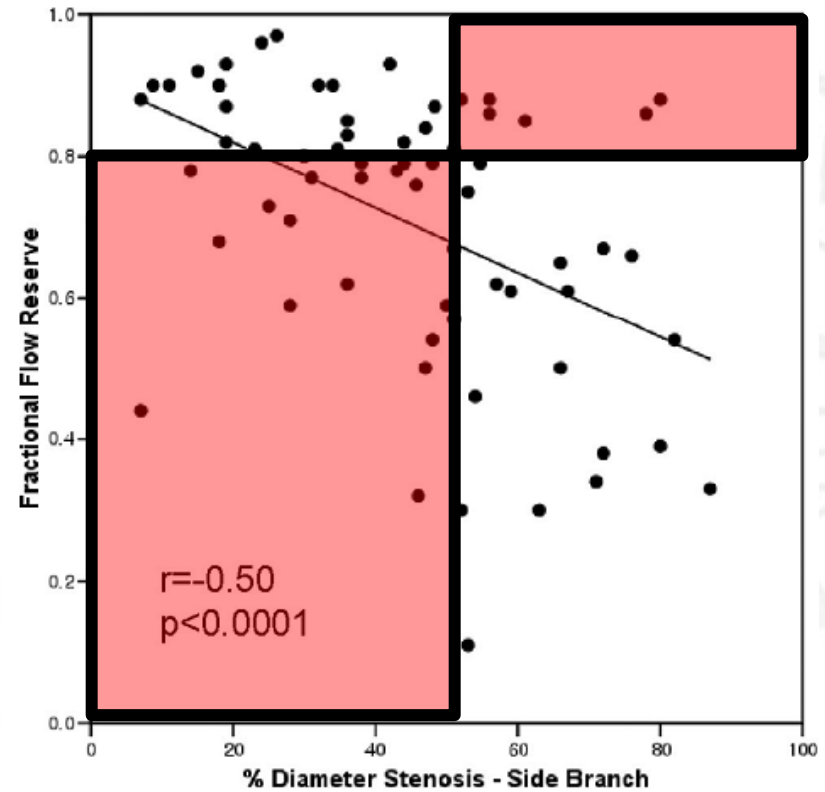
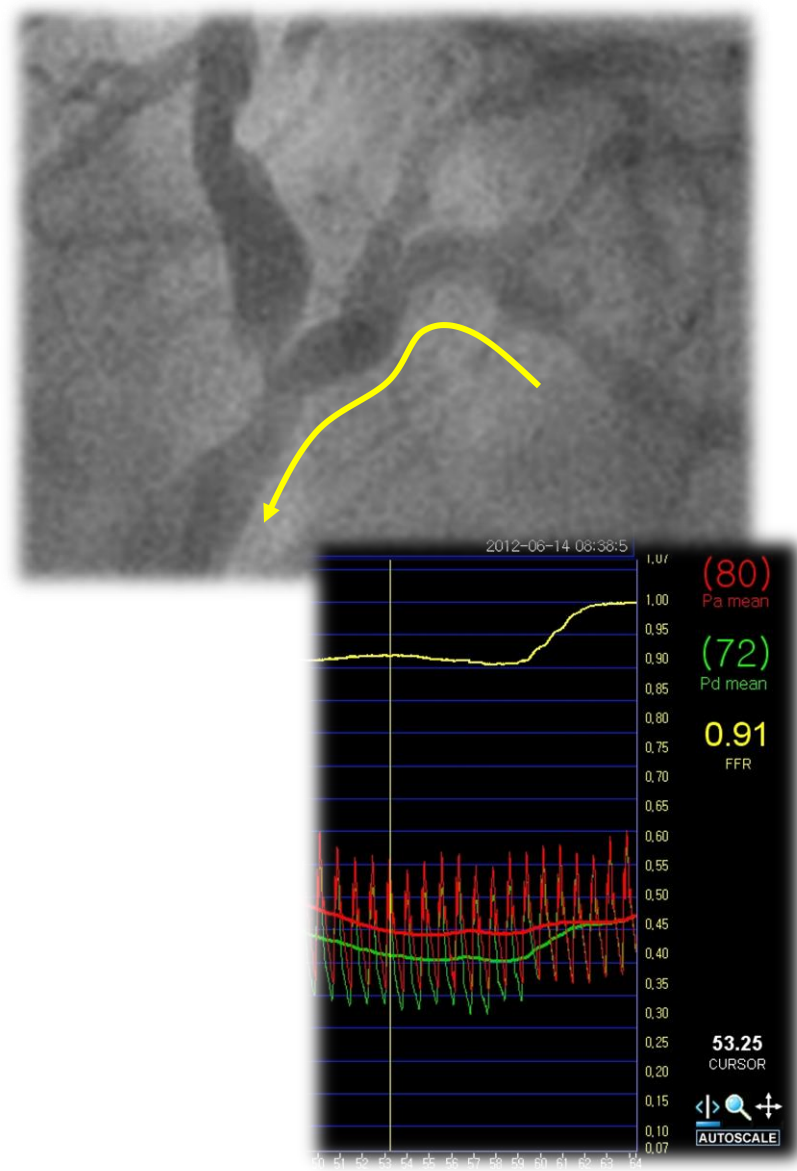
TMT: (+), 8.7 METs



Physiologic Evaluation

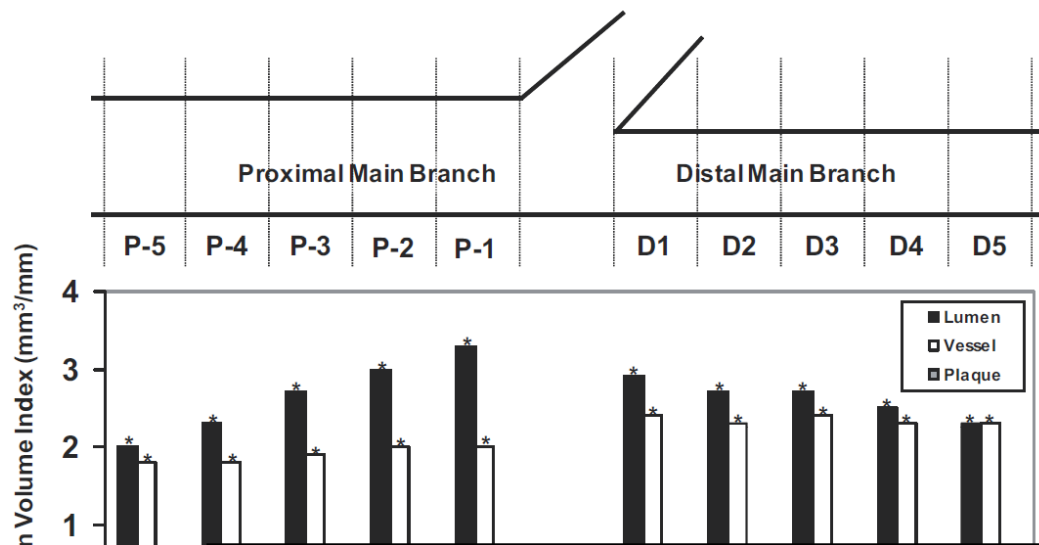


Can we predict LCX compromise by FFR?



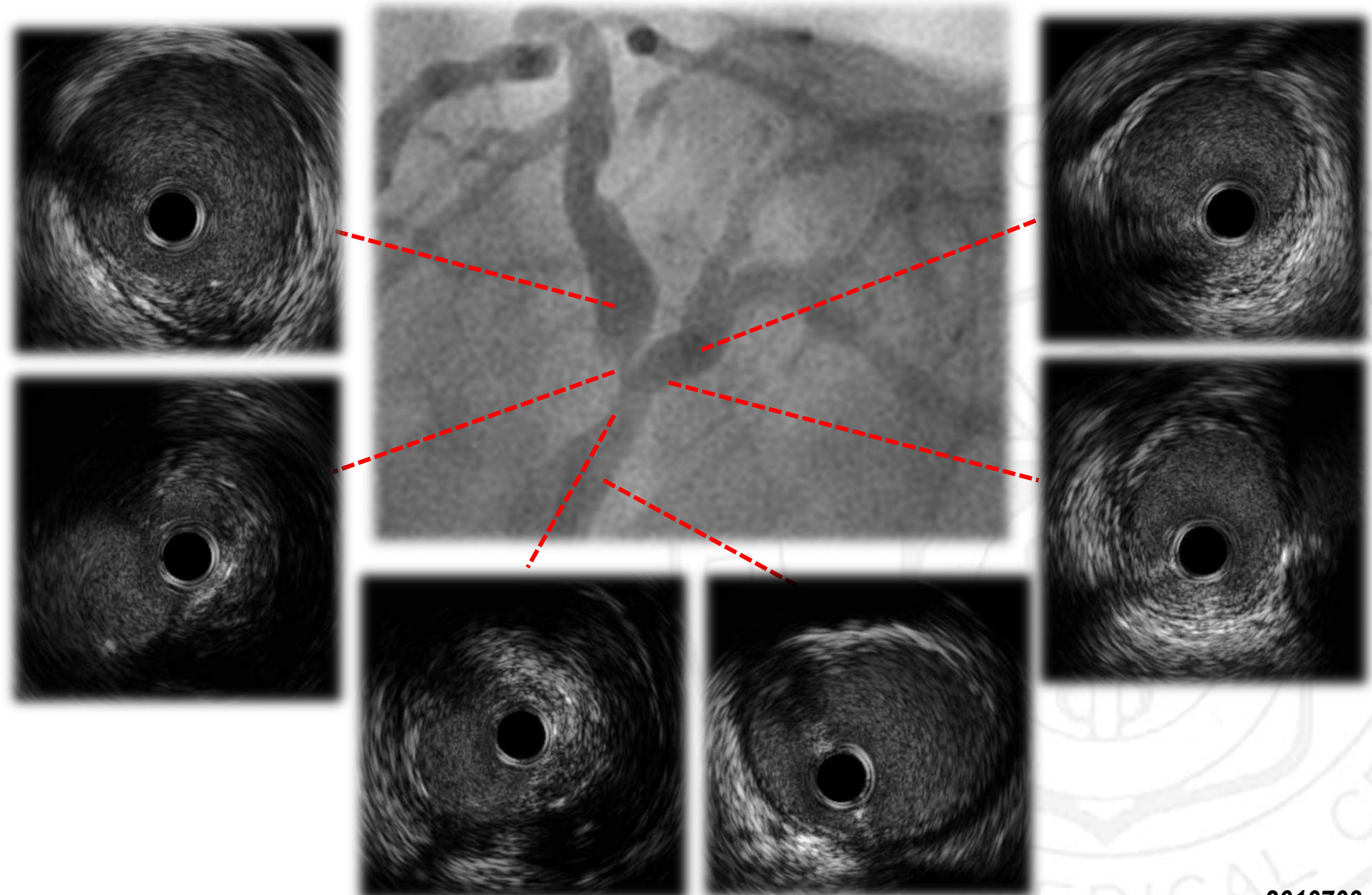
No

How can we predict SB compromise?

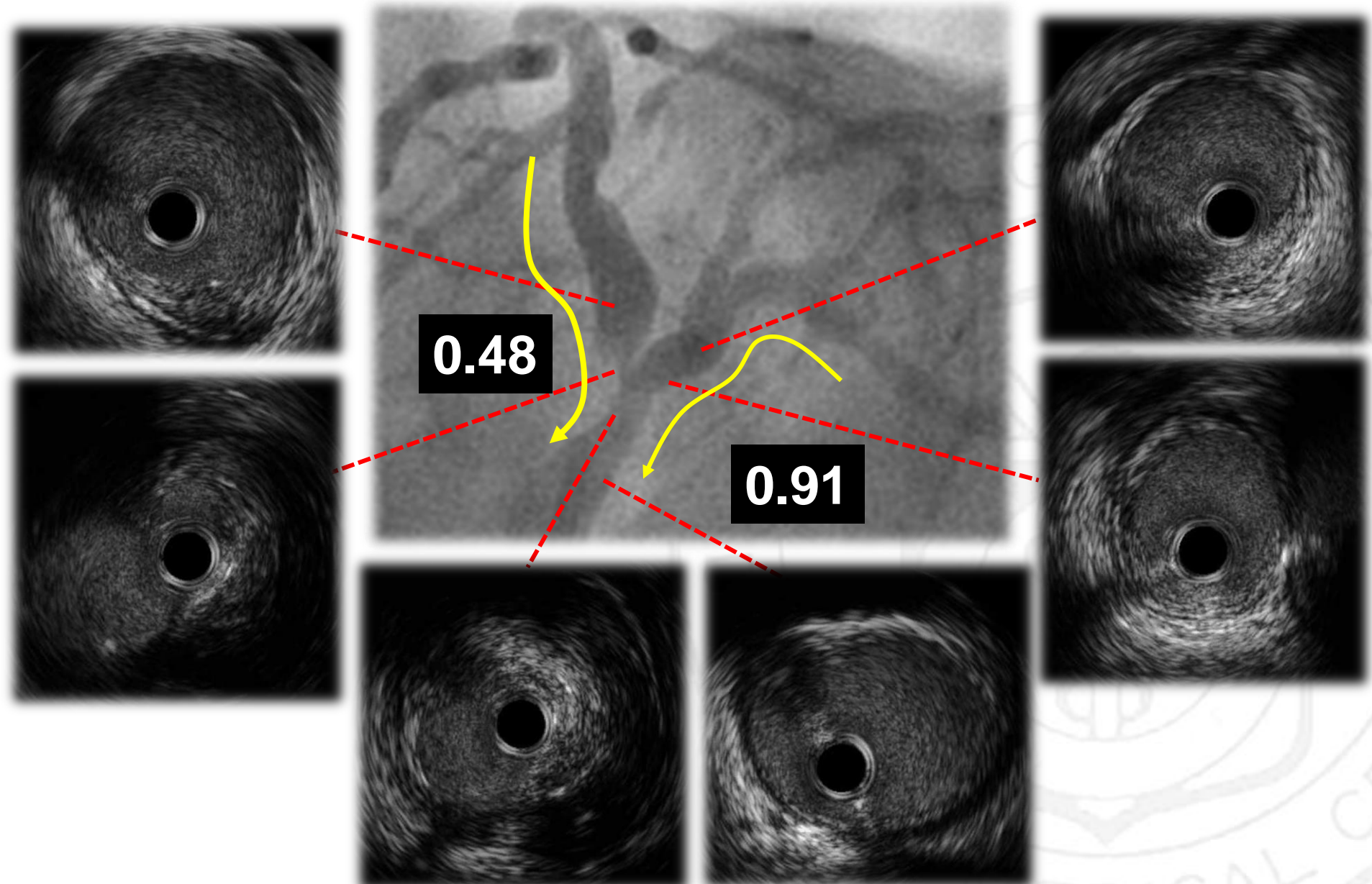


	Univariate Analysis			Multivariate Analysis		
	Odds Ratio	95% CI	p Value	Odds Ratio	95% CI	p Value
Diameter stenosis of SB, %	1.04	1.02–1.06	0.001	1.04	1.02–1.06	0.001
Reference diameter of SB, mm	0.42	0.17–1.03	0.057	0.28	0.10–0.77	0.014
Maximal balloon pressure, atm	1.09	1.00–1.17	0.027	1.07	0.99–1.16	0.089
Minimal lumen diameter of SB, mm	0.23	0.11–0.51	<0.001			
Lesion length of SB, mm	1.08	1.01–1.16	0.02			
True bifurcation	2.93	1.45–5.92	0.003			

Anatomic Evaluation



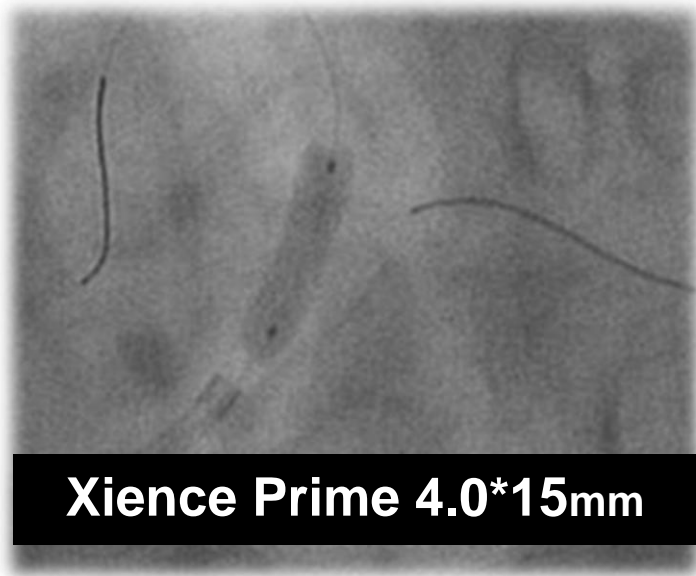
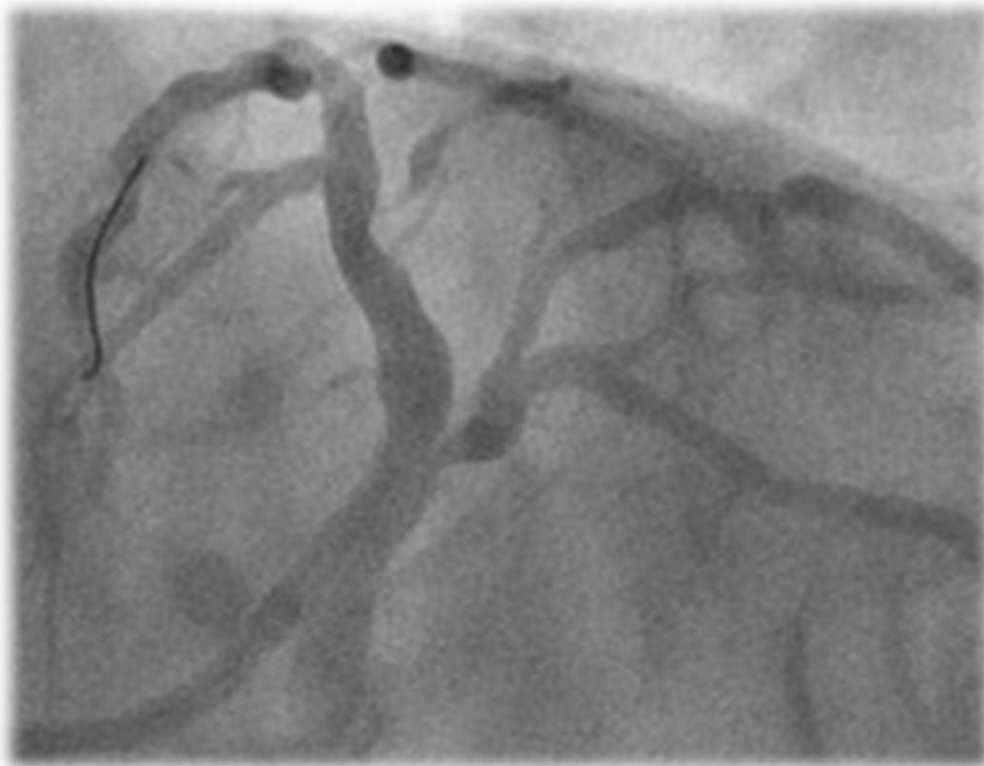
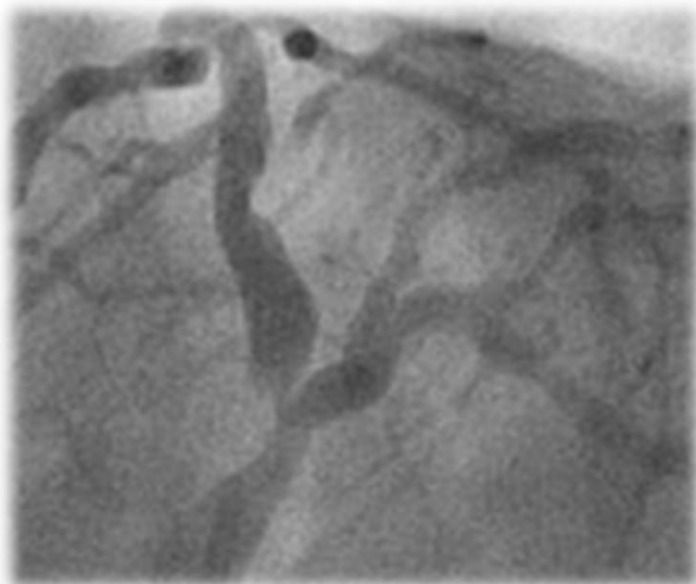
What is your Decision?



0.48

0.91

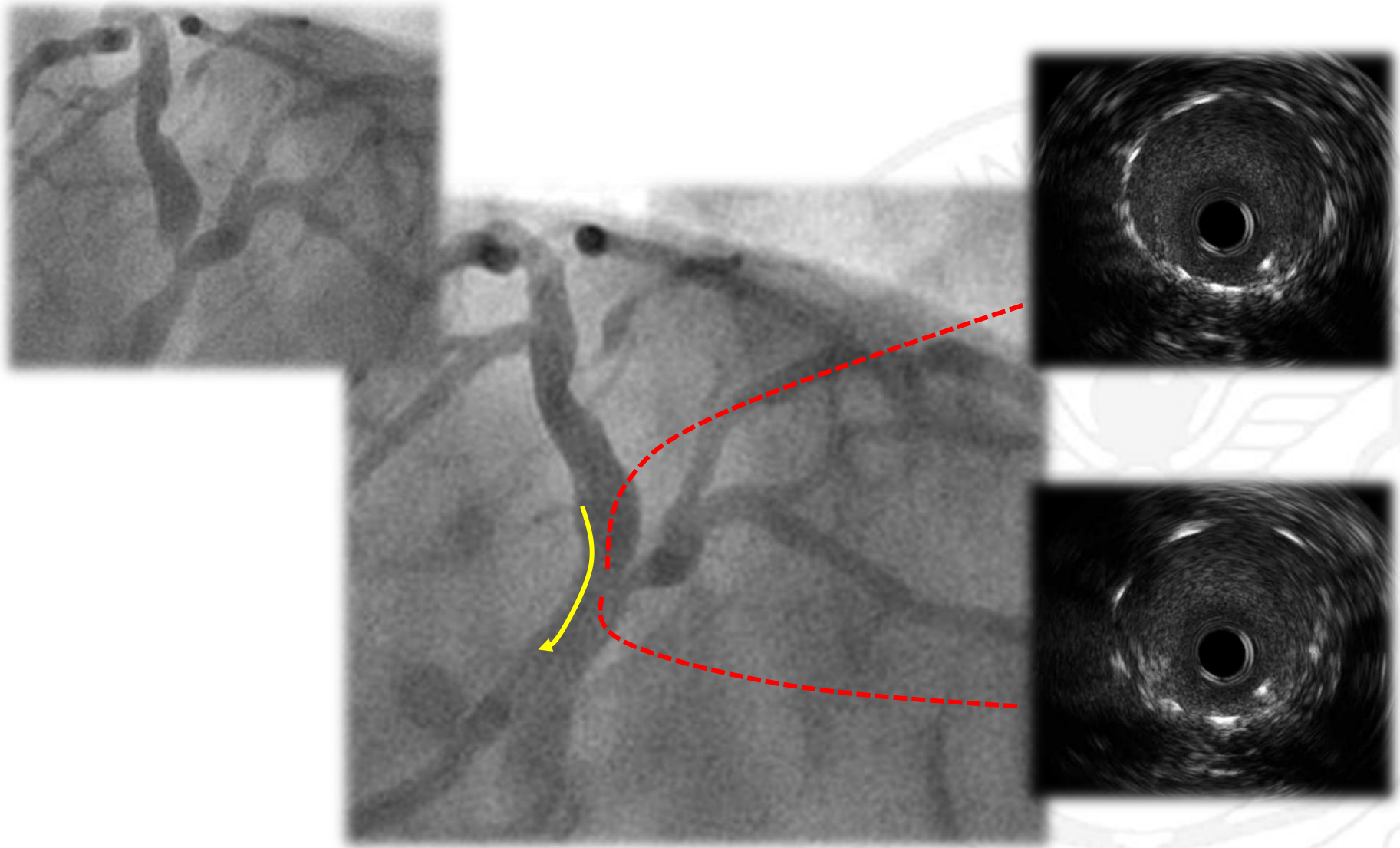
Simple Crossover Stenting



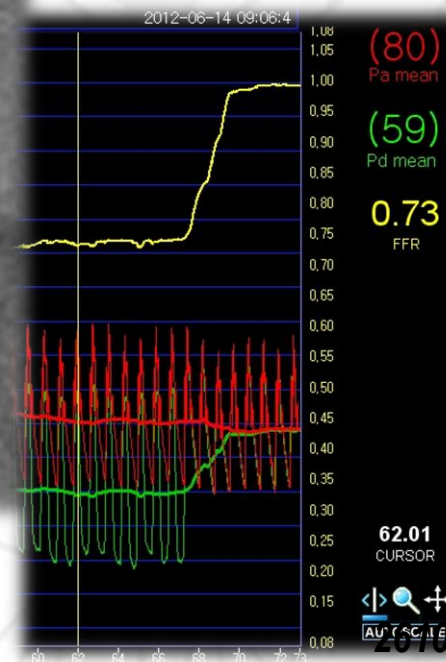
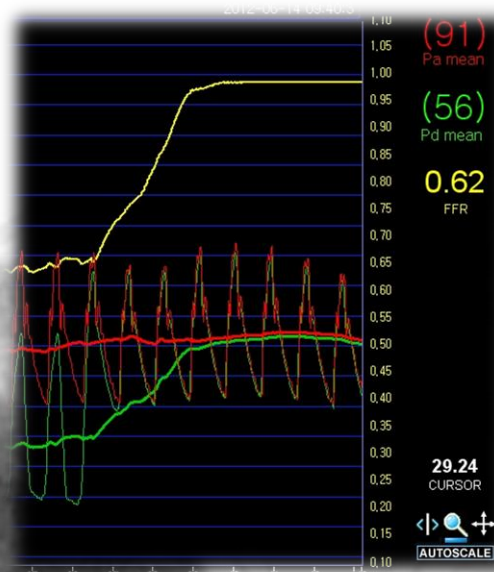
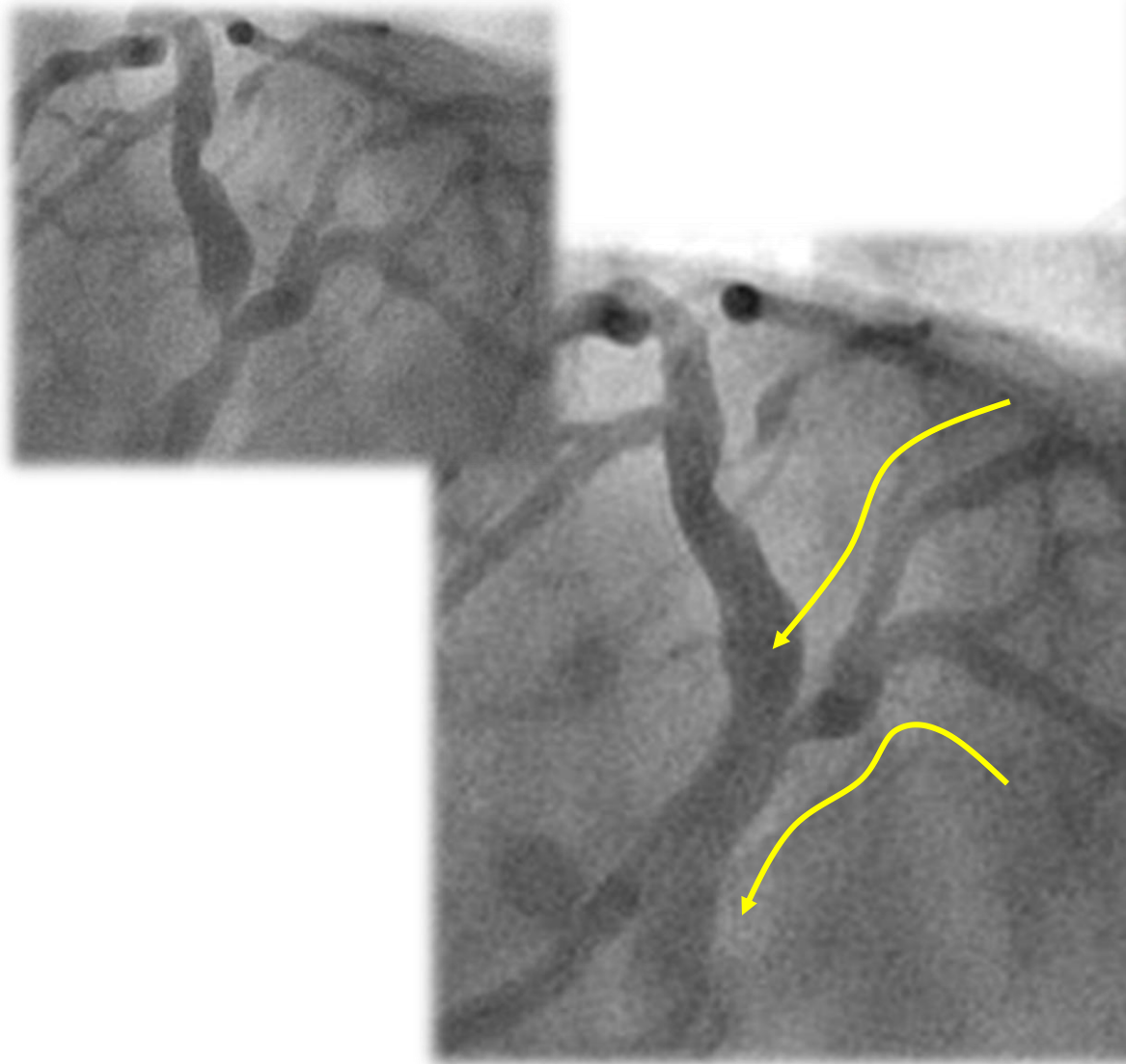
*Acceptable
angiographic result*



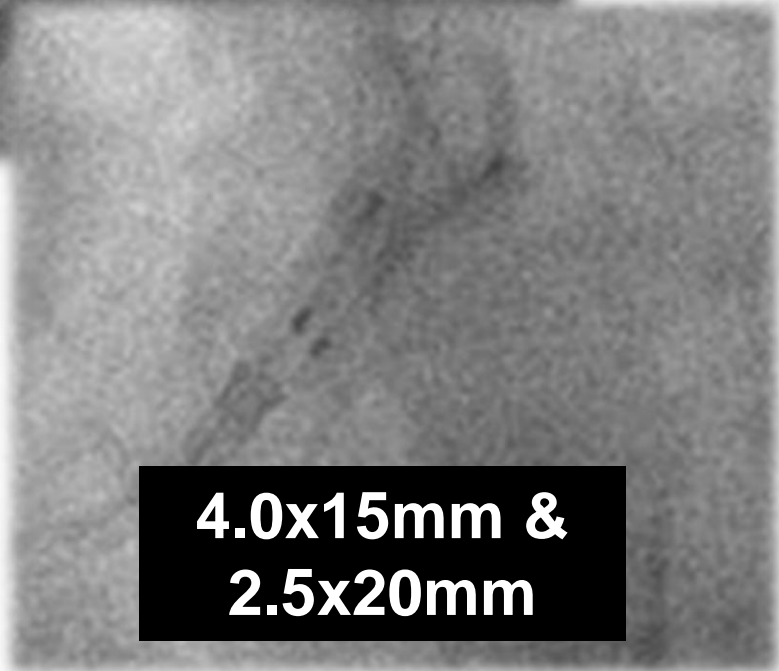
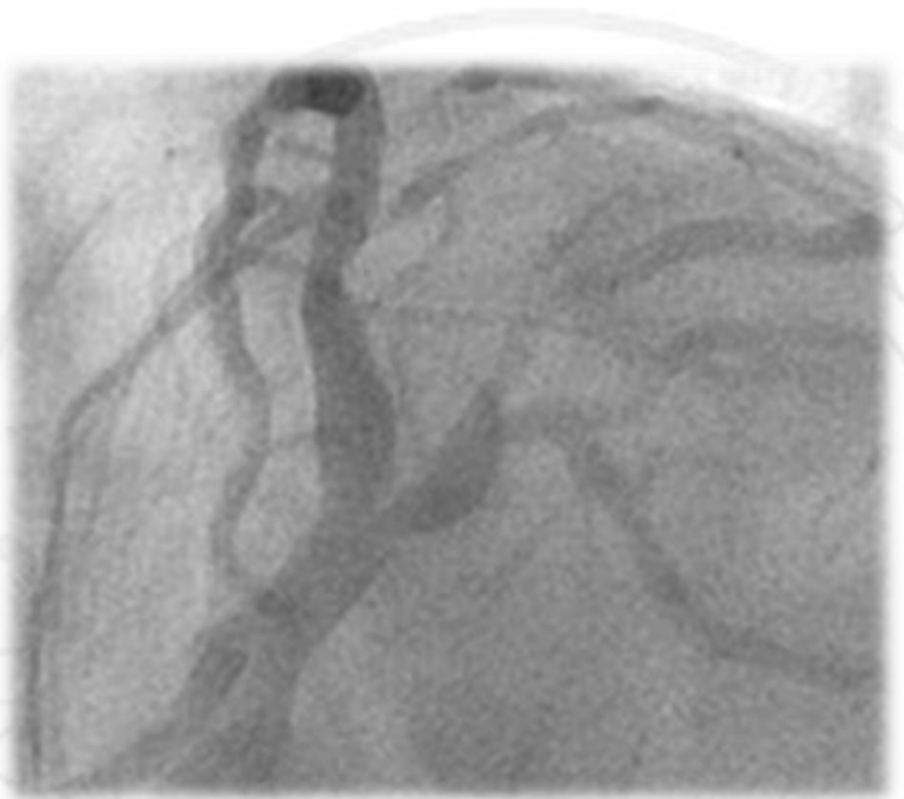
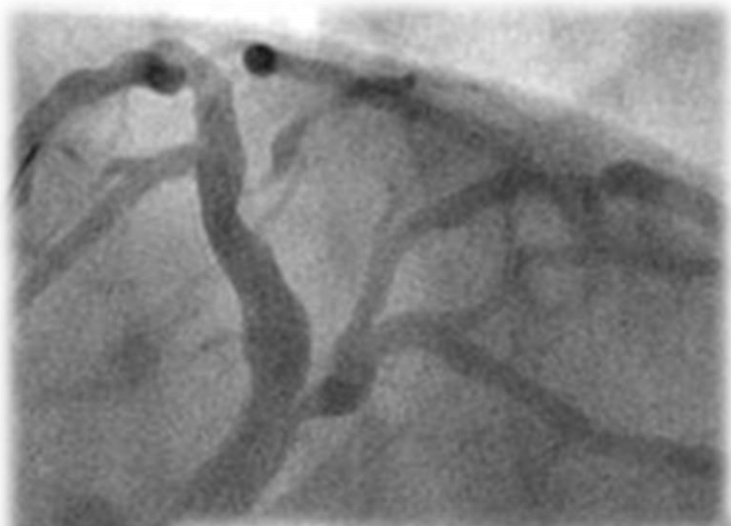
Jailed LCXos Assessment by IVUS



Jailed LCXos Assessment by FFR

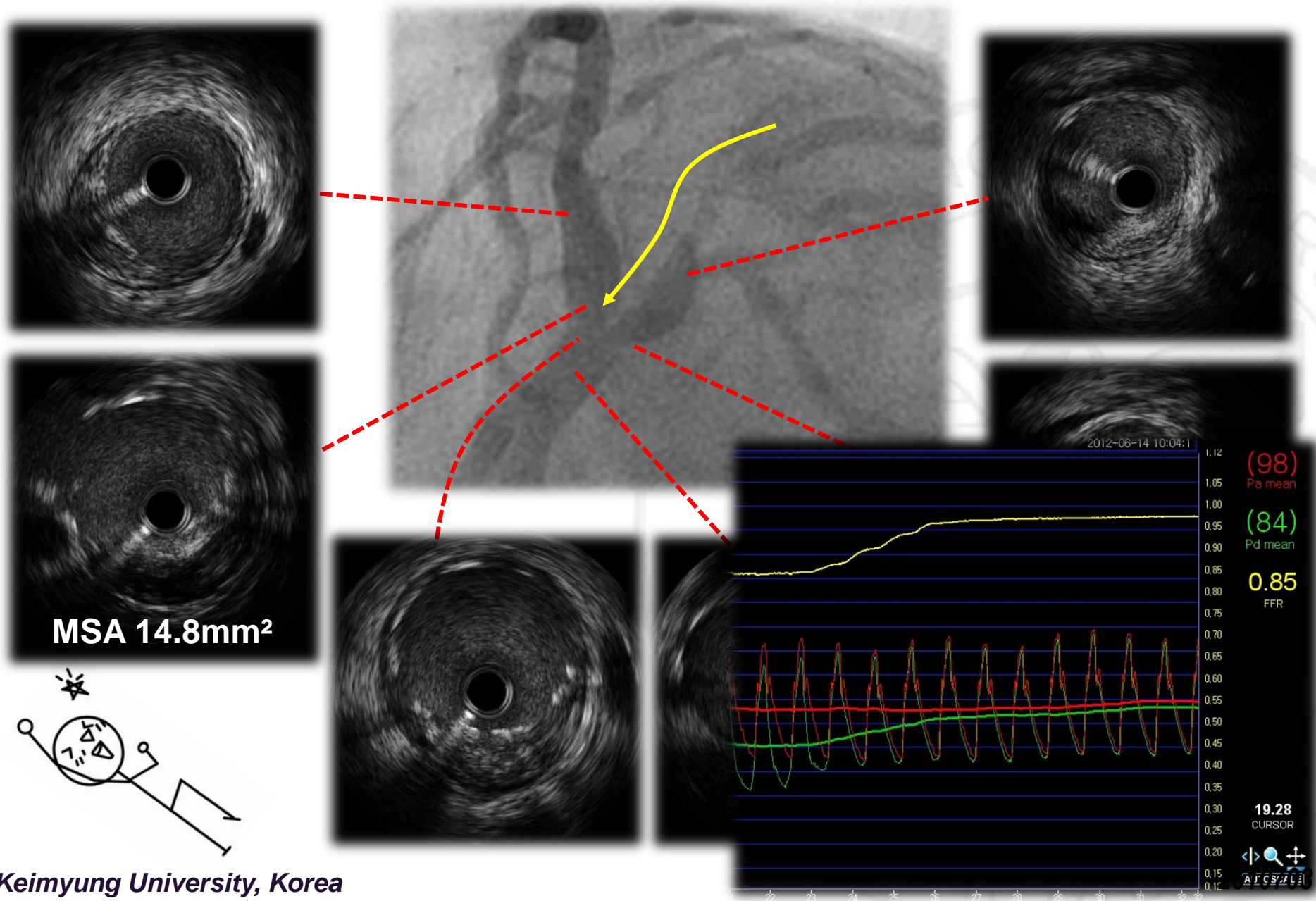


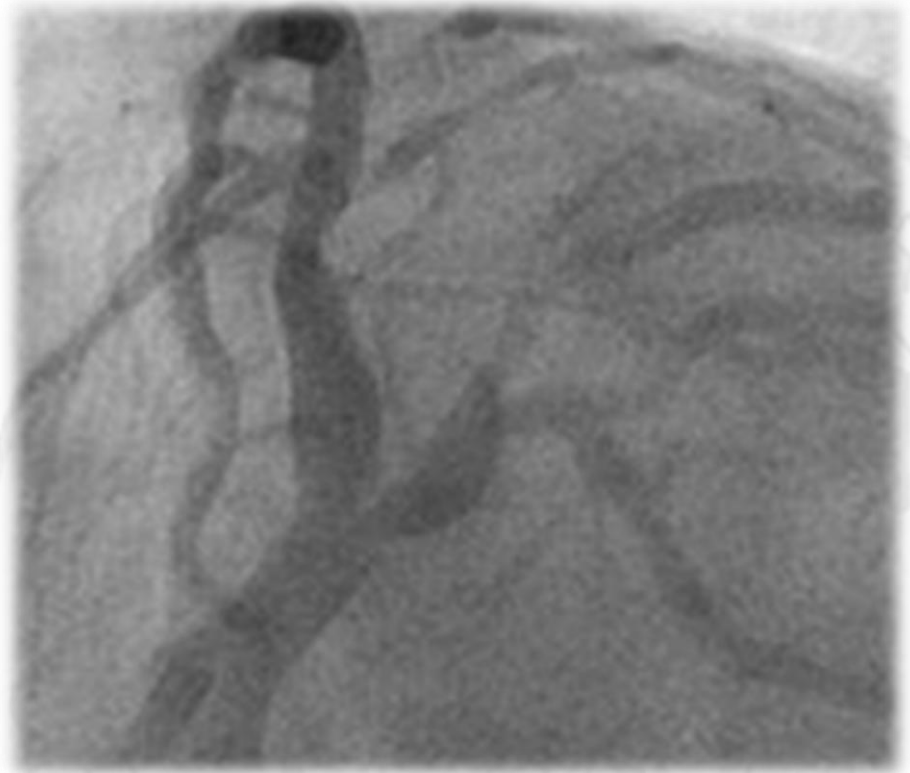
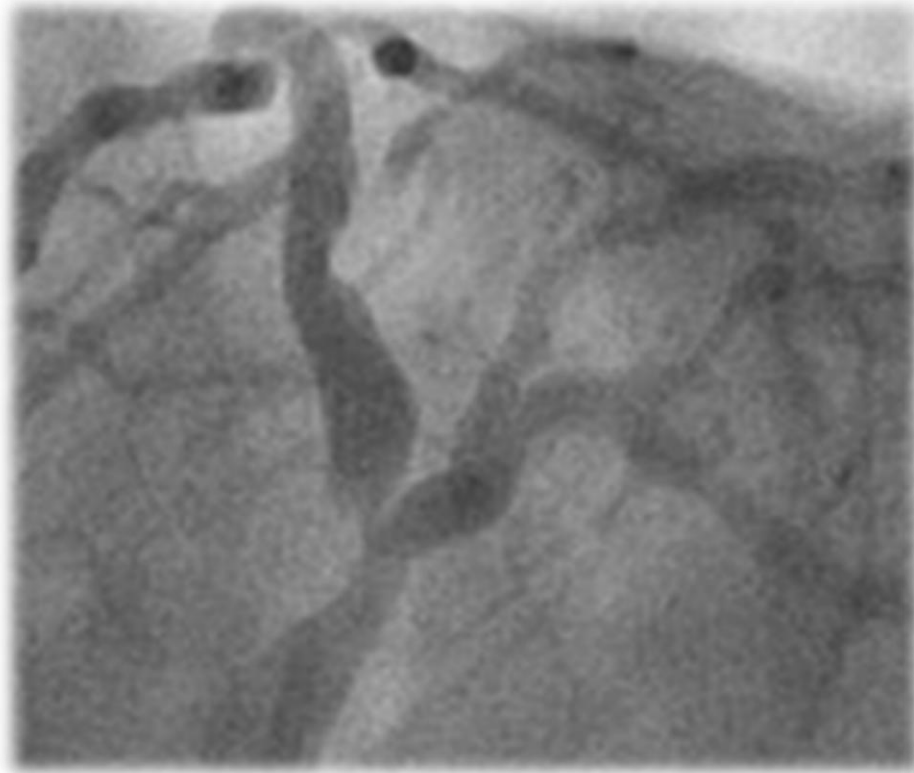
Kissing Balloon for Optimization



**4.0x15mm &
2.5x20mm**



Result Evaluation by IVUS & FFR





Follow-up TMT: (-), 12.1 METs

Take Home Message

- 1. Safety & efficacy issues for FFR-guided defer in LM bifurcation lesion.*** 
- 2. Safety & efficacy issues for FFR-guided PCI in Jailed LCX ostial lesion.*** 
- 3. Limitations for prediction of LCX jailing after simple crossover stenting. However, IVUS and FFR gave various information in LM bifurcation PCI.***



Bifurcation Stenting with Functional Evaluation

Thank you for yours attention

Chang-Wook Nam, MD, PhD

Keimyung University Dongsan Medical Center, Daegu, Korea