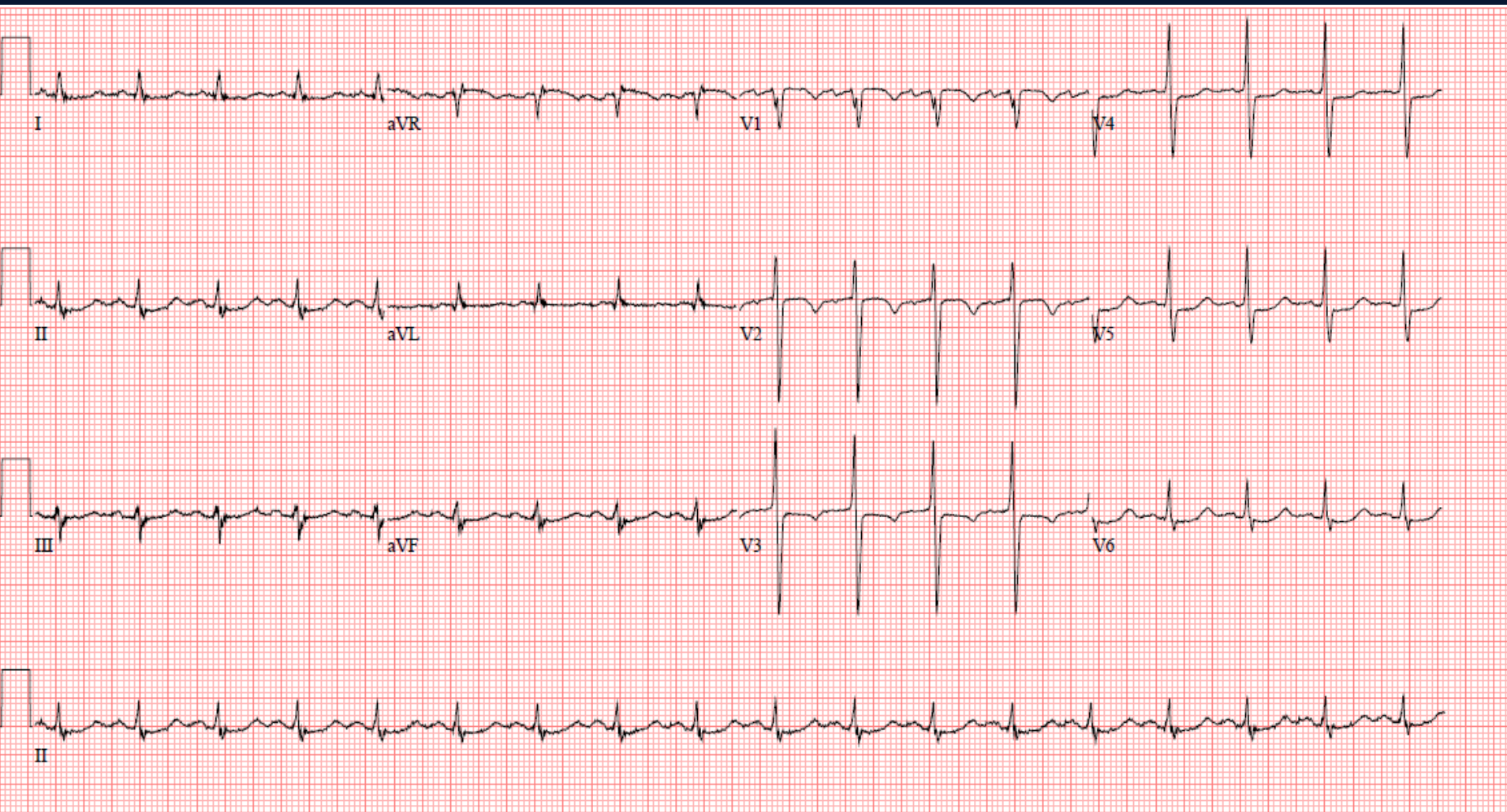


Case Presentation

- **76/M**
- **Chief complaints**
Effort chest pain (3 days ago)
- **Past Medical history**
 - **DM, HTN, hyperlipidemia**
 - **PAOD, DM foot s/p amputation**
- **Work up**
 - **EKG : NSR**
 - **Cardiac enzyme: troponin I 1.065/CK-MB 6.5**
 - **TTE: normal LV size and systolic function**

ECG



25mm/s 10mm/mV 150Hz 7.1.1 12SL 241 CID: 1

EID:Newly Acquired EDT: ORDER:

Chest X-ray



Initial Coronary angiography

RCA

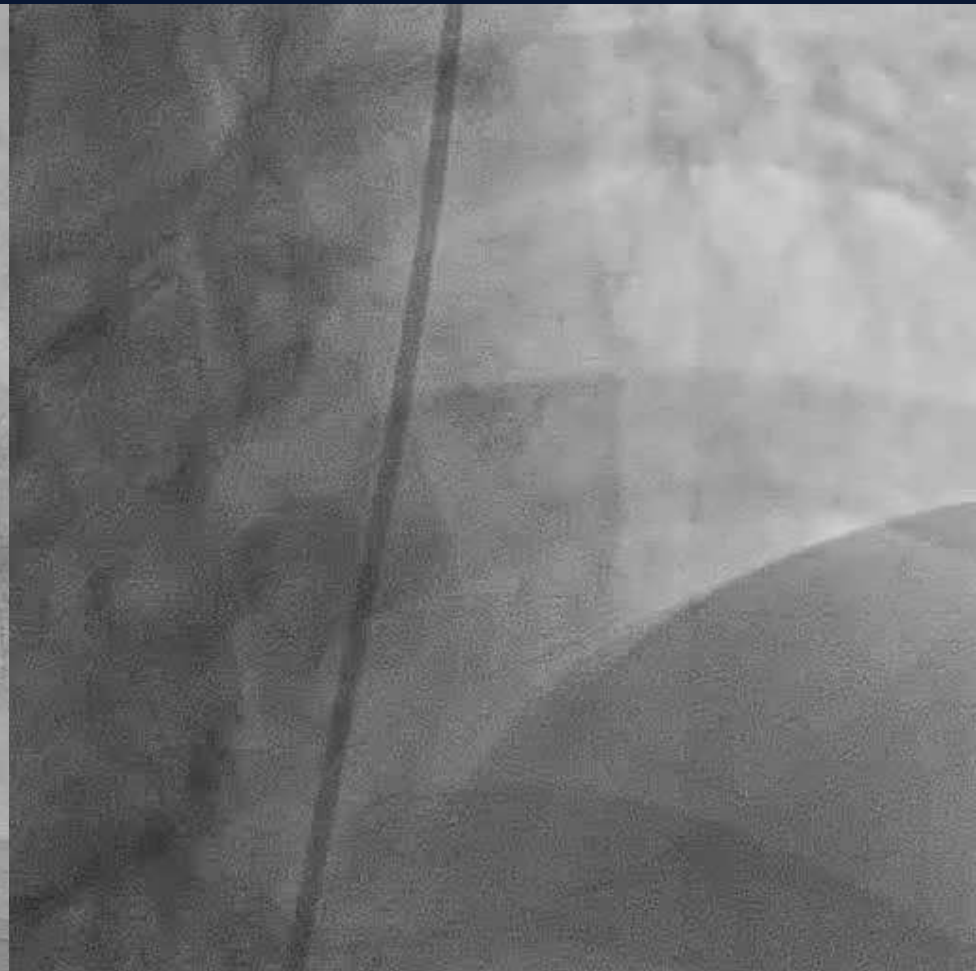


Initial Coronary angiography

LCA



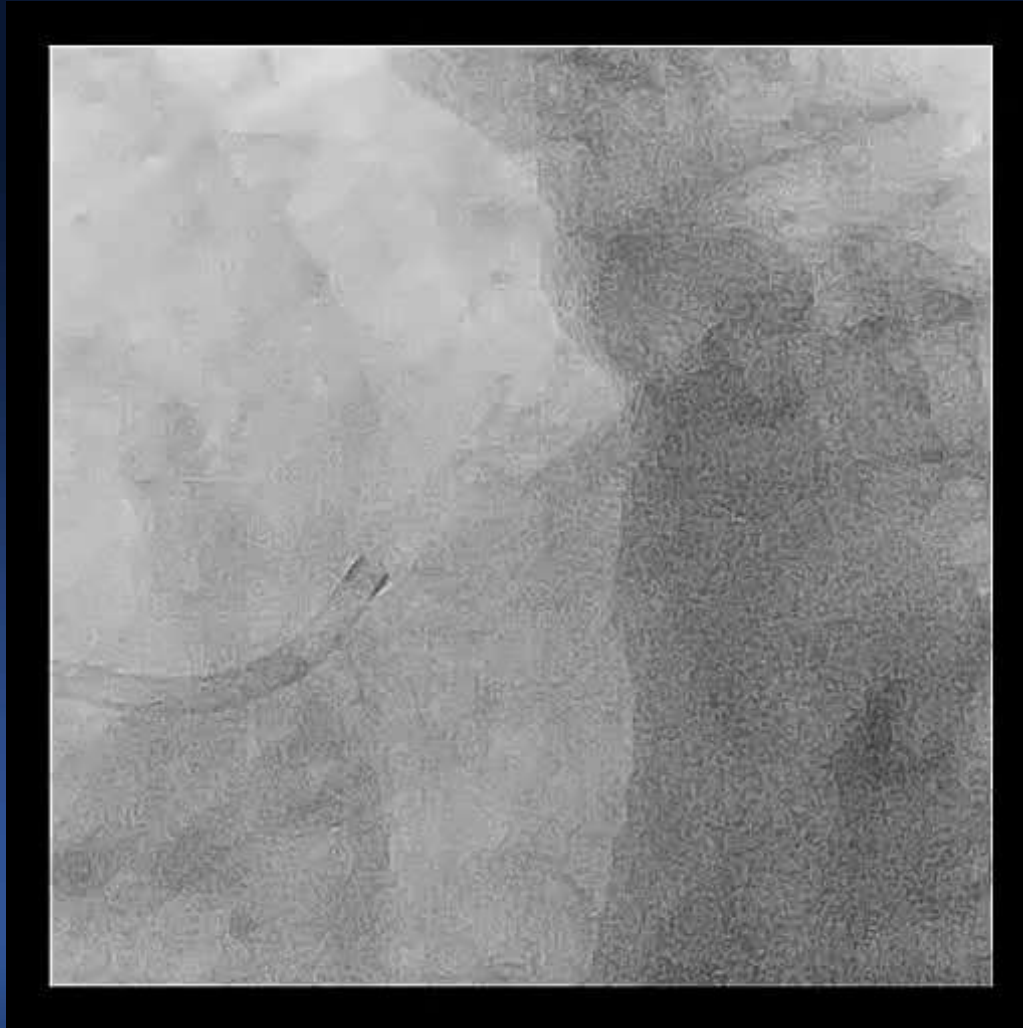
AP Caudal



AP Cranial

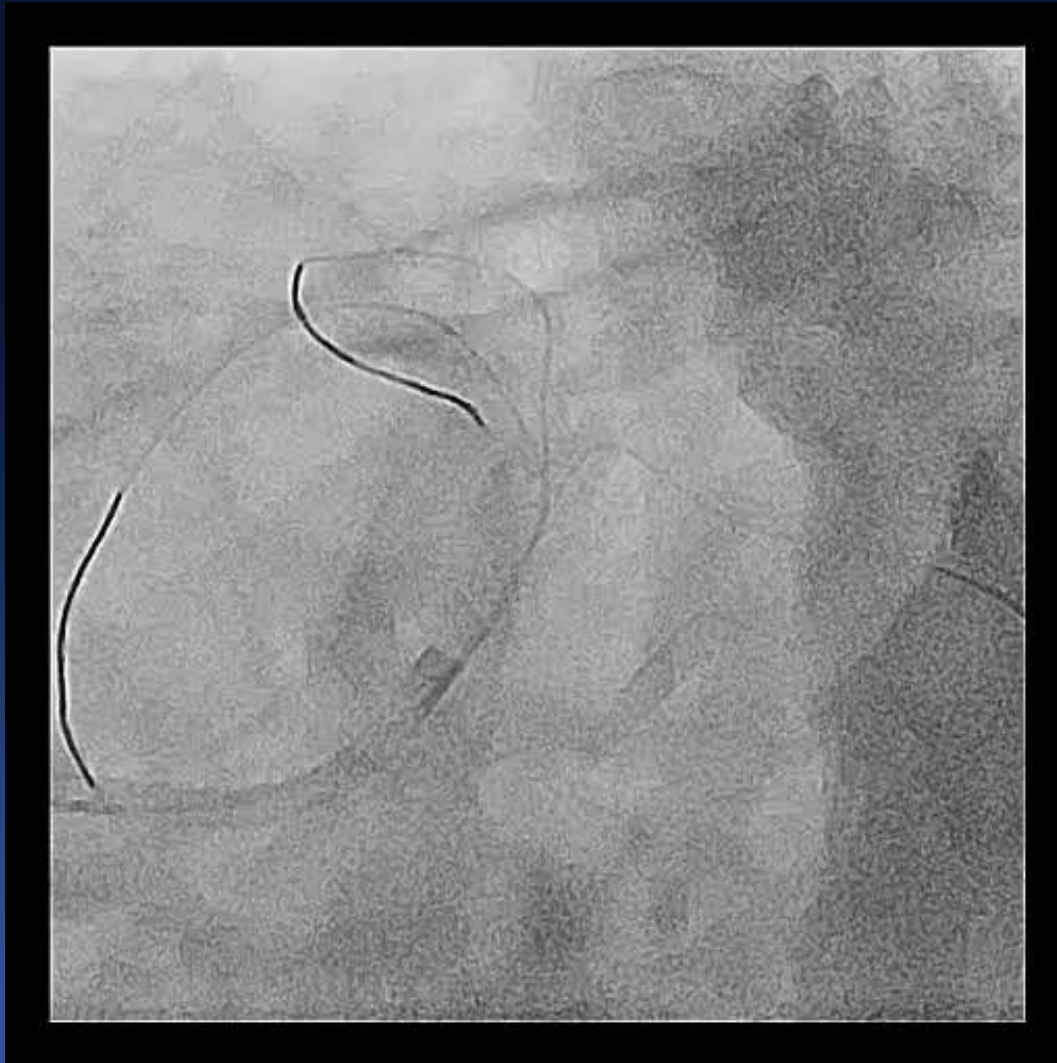
Initial Coronary angiography

LCA



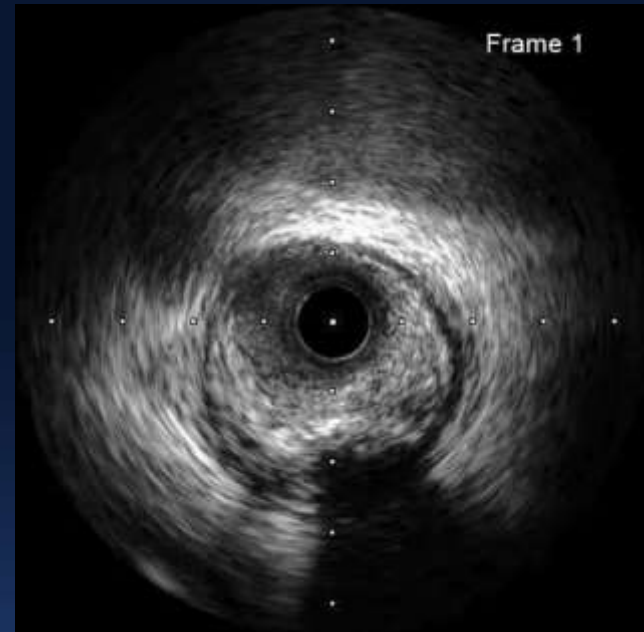
Spider

JL4 8Fr, Femoral

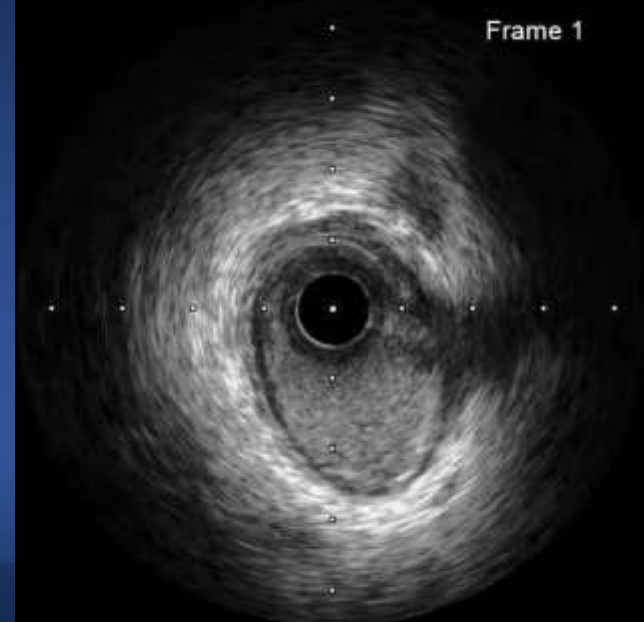


Wiring
LAD: BMW, LCX & RI: Sion

Initial IVUS



LAD

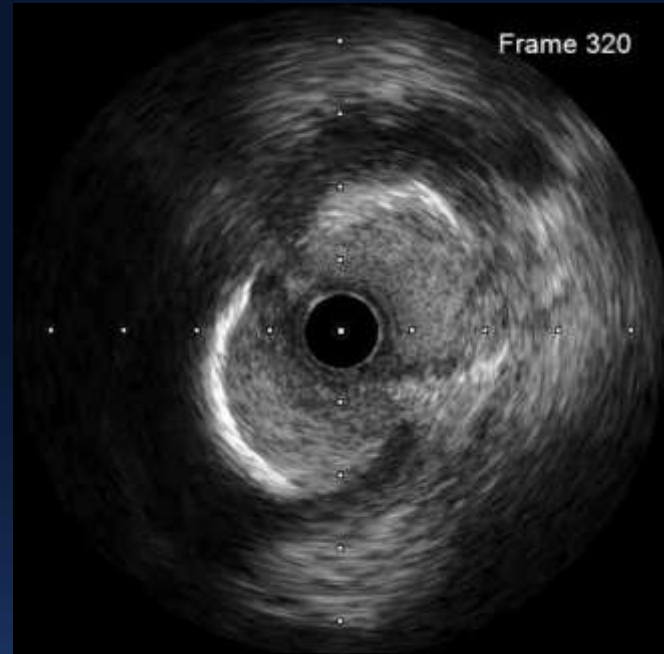


LCX

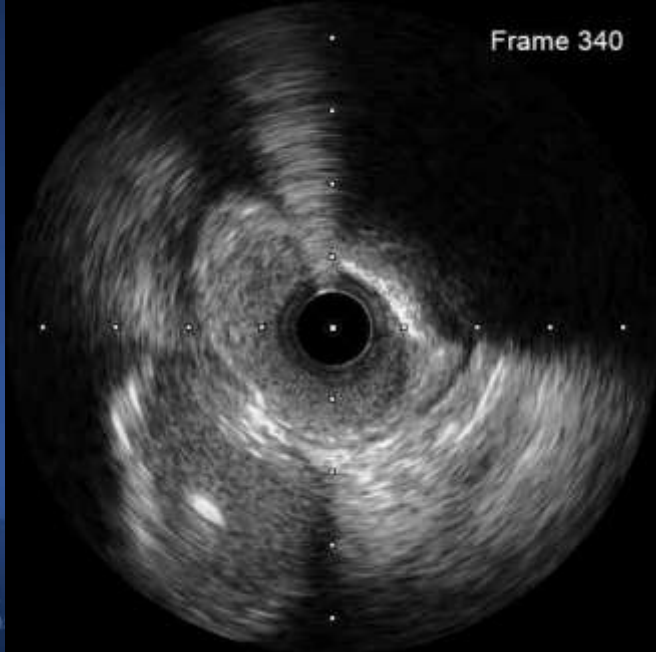
Initial IVUS



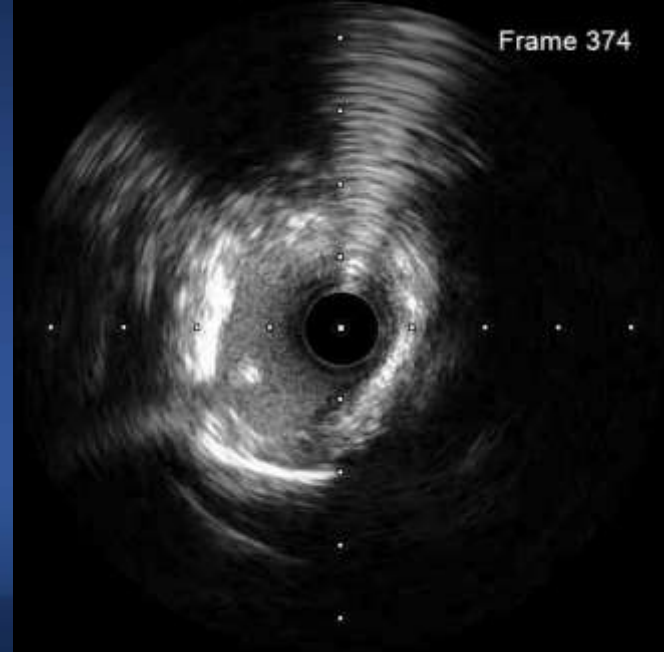
LCX os
MLA:
2.89 mm²



Di os
MLA:
2.84 mm²



LAD os
MLA:
2.18 mm²

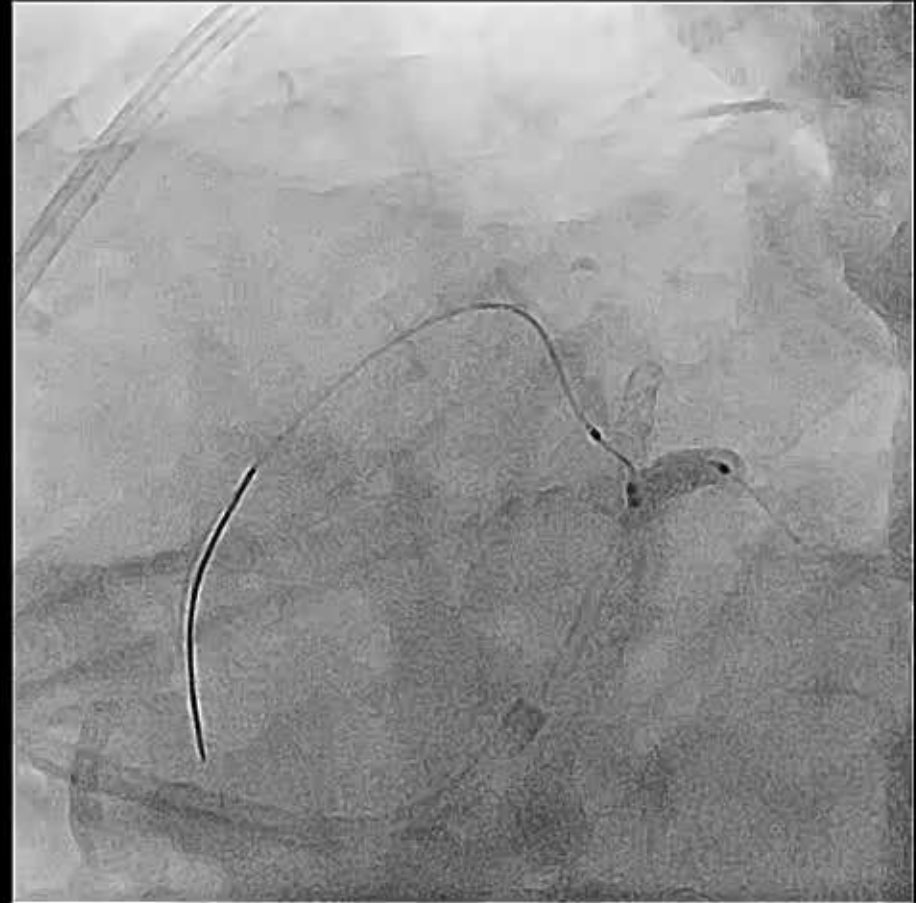
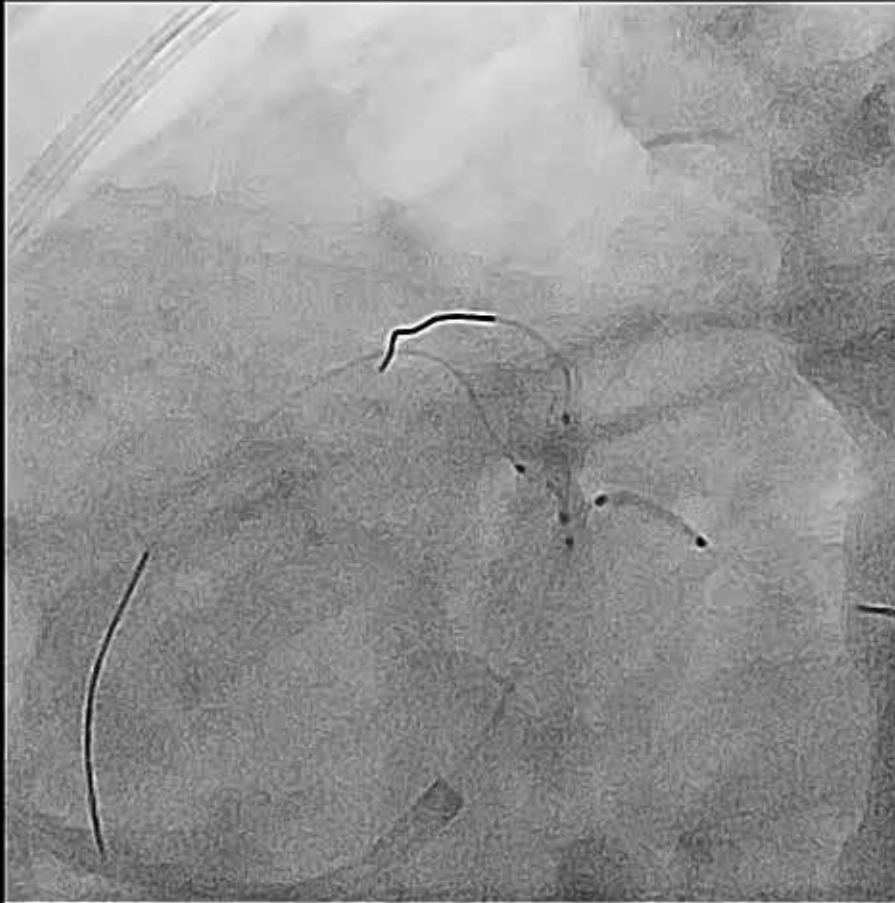


LM
MLA:
3.26 mm²

RI & LCX direct stenting

RI: Xience S. 2.5 * 18 mm

LCX: Xience S. 3.25 * 15 mm



Simultaneous Balloon Crush

LM-pLAD: NC 3.75 up to 4.03-4.17 (20-24 atm)

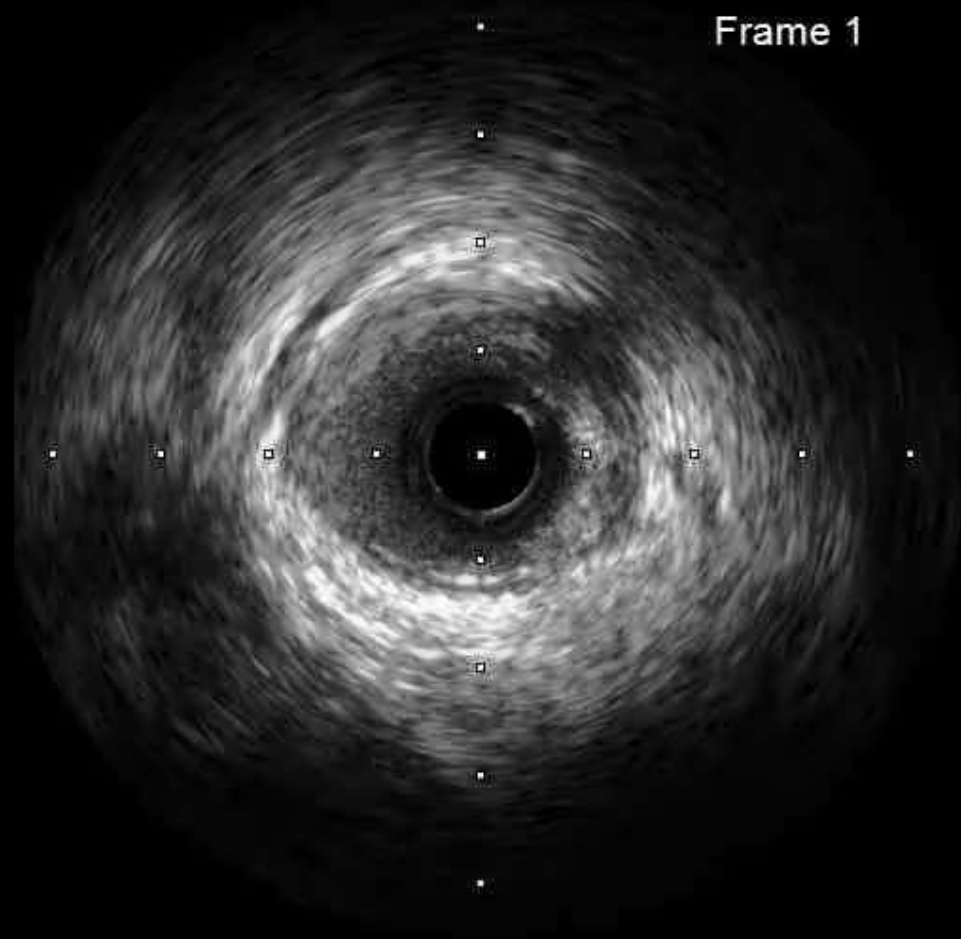


LM-pLAD stenting & HP Balloon

Xience S. 3.0 * 38 mm
NC 3.75 up to 4.17 (24 atm)



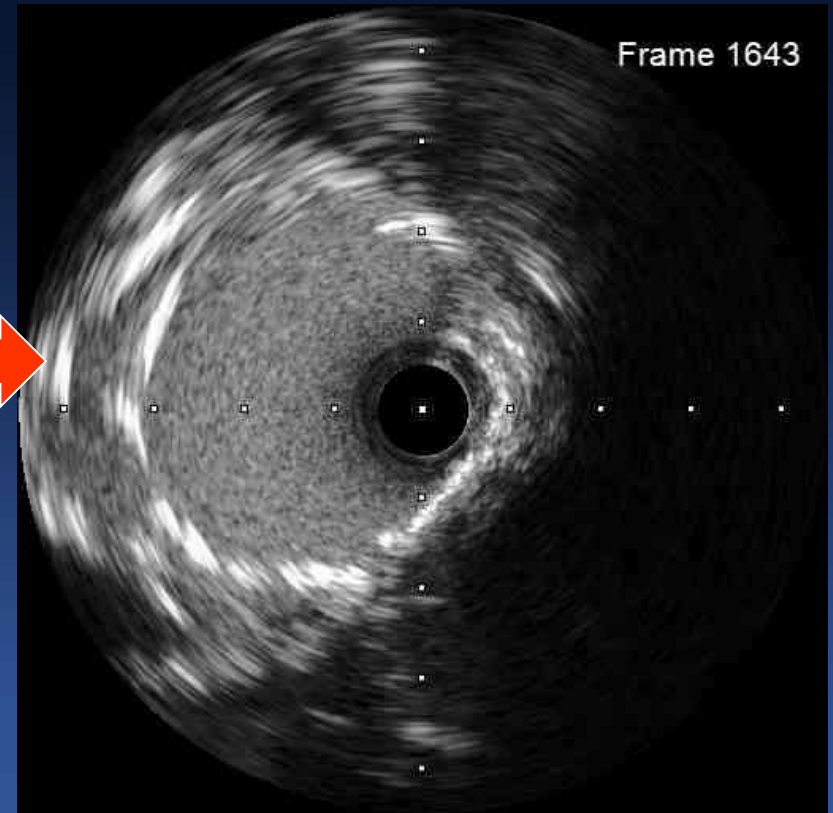
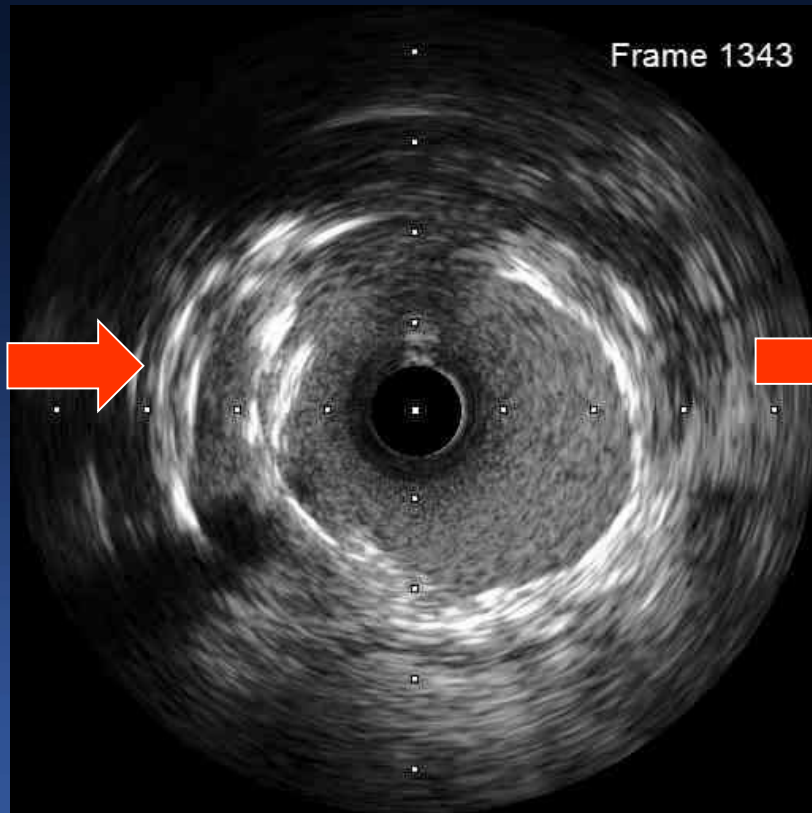
IVUS after LAD stenting



IVUS after LAD stenting

**Crushed
RI os stent**

**Crushed
LCX os stent**

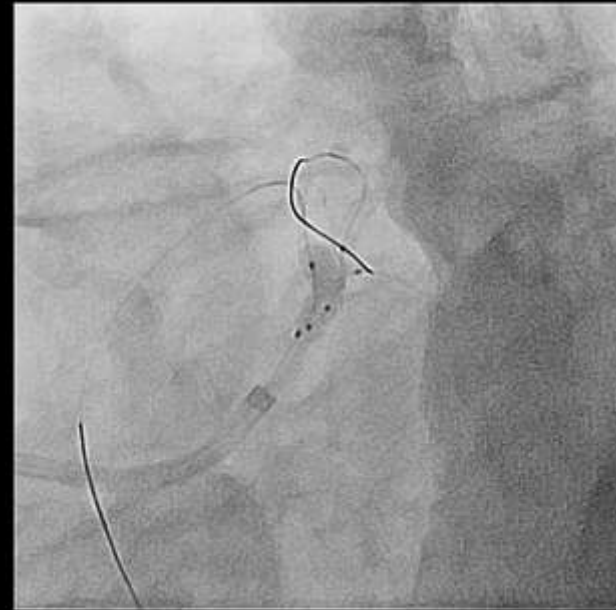
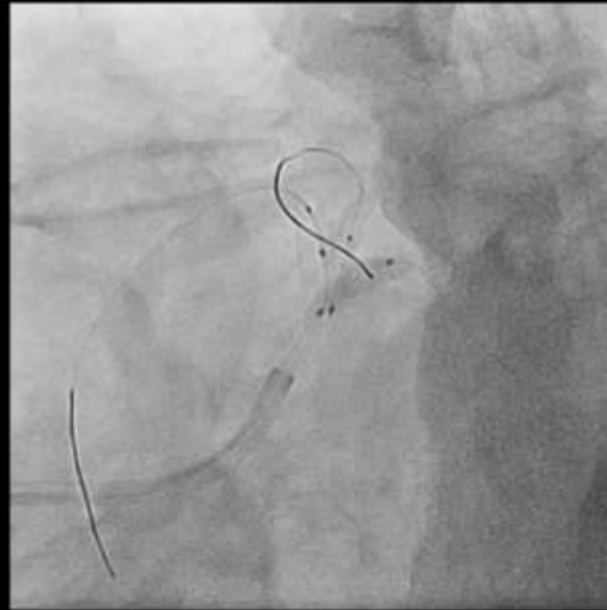
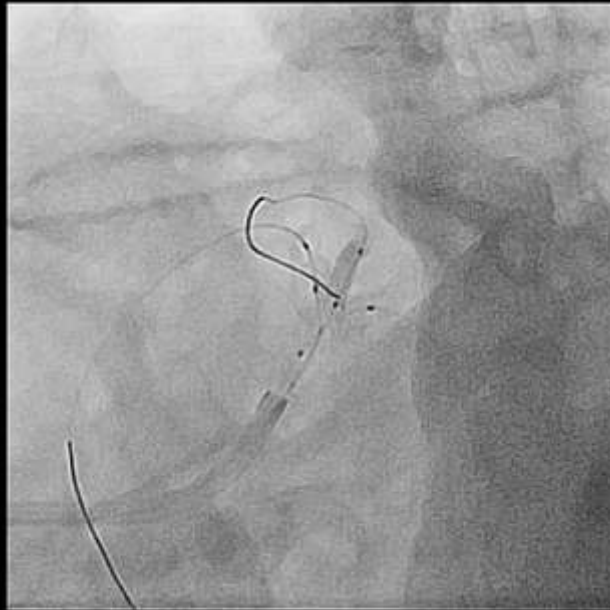


HP Ballooning(RI/ LCX/ LM-pLAD)

RI

LCX

LAD

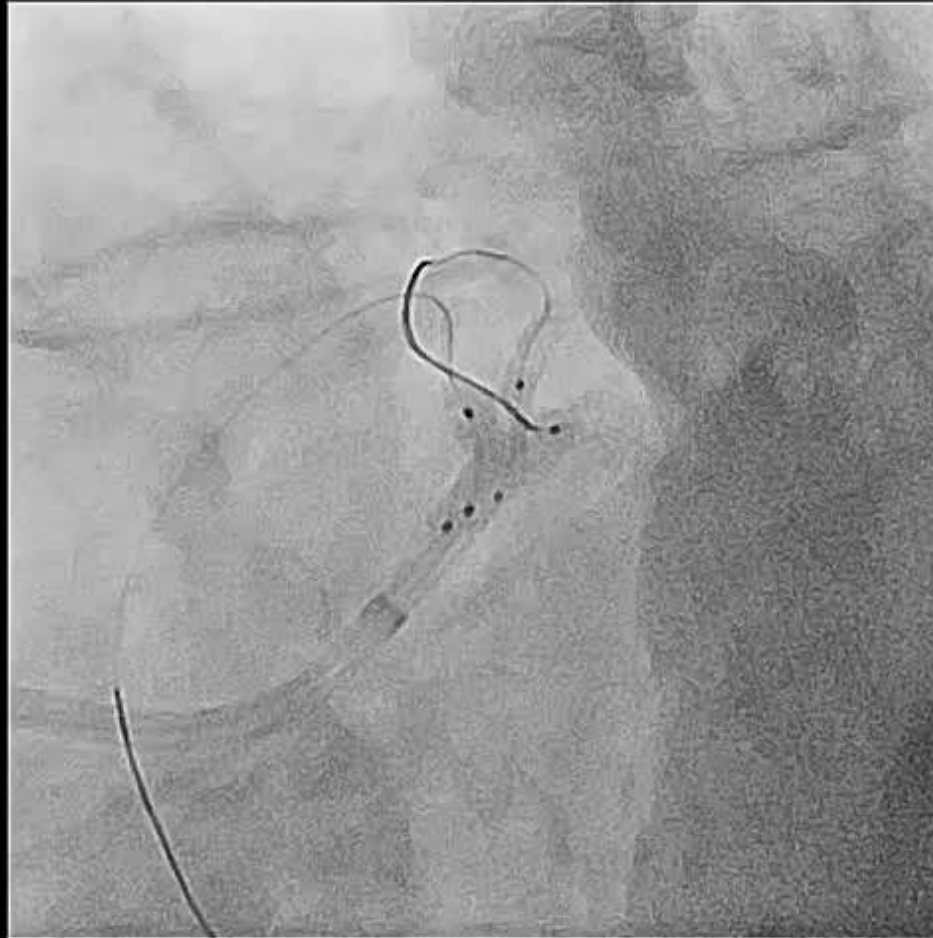


RI: compliant balloon 2.5 up to 2.9 (16 atm)

LCX: NC balloon 3.25 up to 4.04 (28 atm)

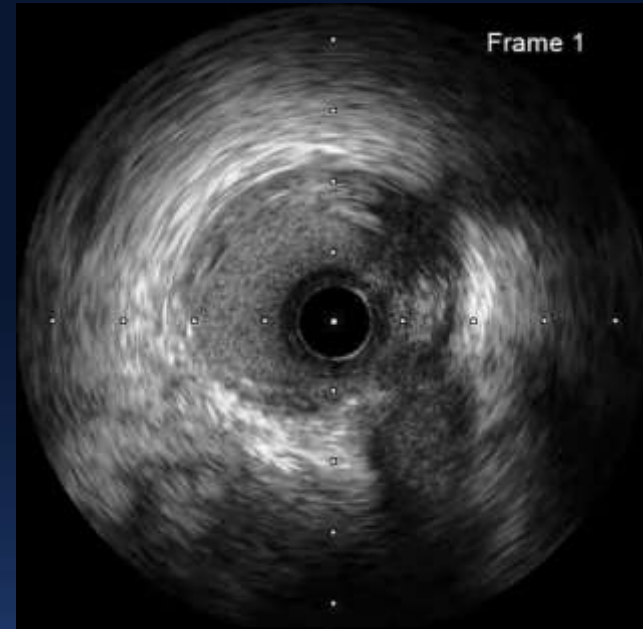
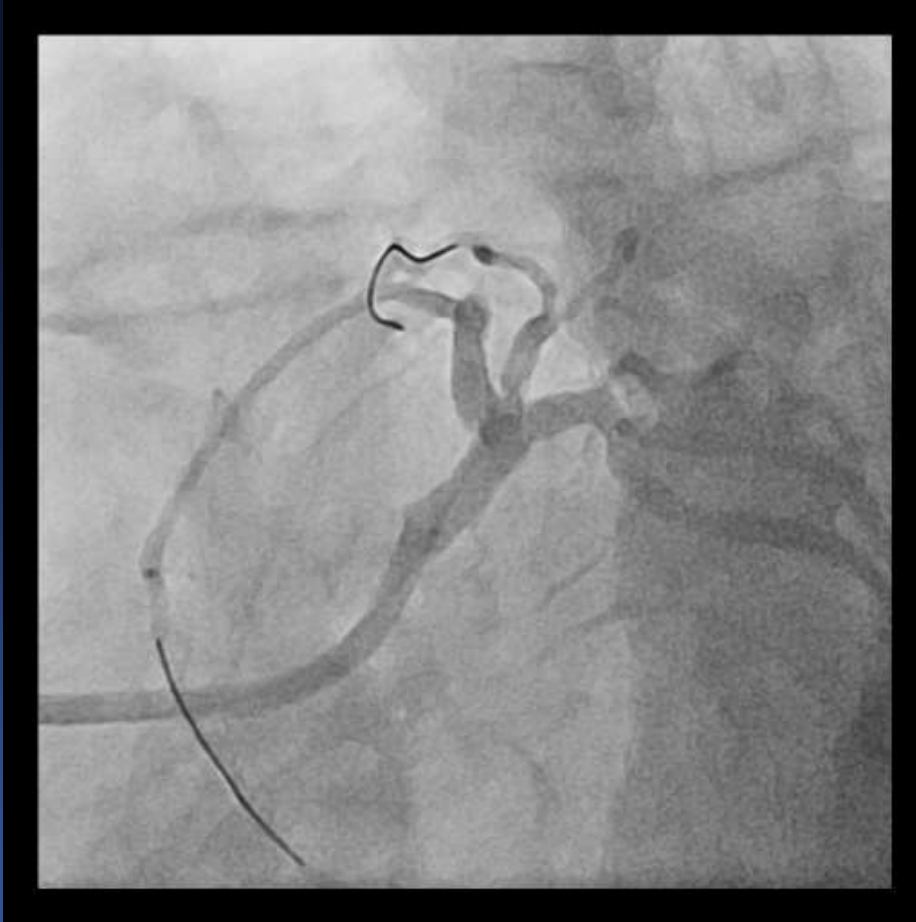
LM-pLAD: NC 3.75 up to 4.17 (24 atm)

Triple Kissing balloon



RI: compliant balloon 2.5 up to 2.7 (10 atm)
LCX: NC balloon 3.25 up to 3.2 (10 atm)
LM-pLAD: NC 3.75 up to 3.68 (10 atm)

Final IVUS



LAD



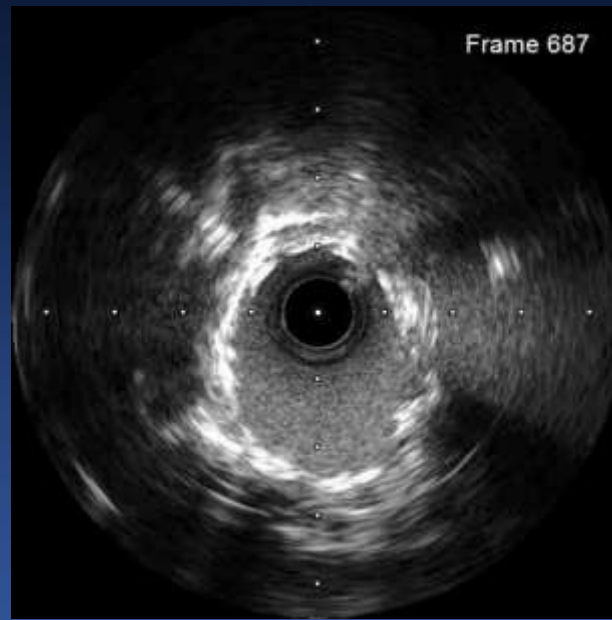
LCX

Final IVUS

LAD MSA: 7.86 mm²

LCX os MSA: 6.65 mm²

Di os MSA: 3.08 mm²



Final Coronary angiography

LCA

