

Severe Coronary Calcification

Ju Hyeon Kim, MD.

*University of Ulsan College of Medicine
Heart Institute, Asan Medical Center, Seoul, Korea*

Case Presentation

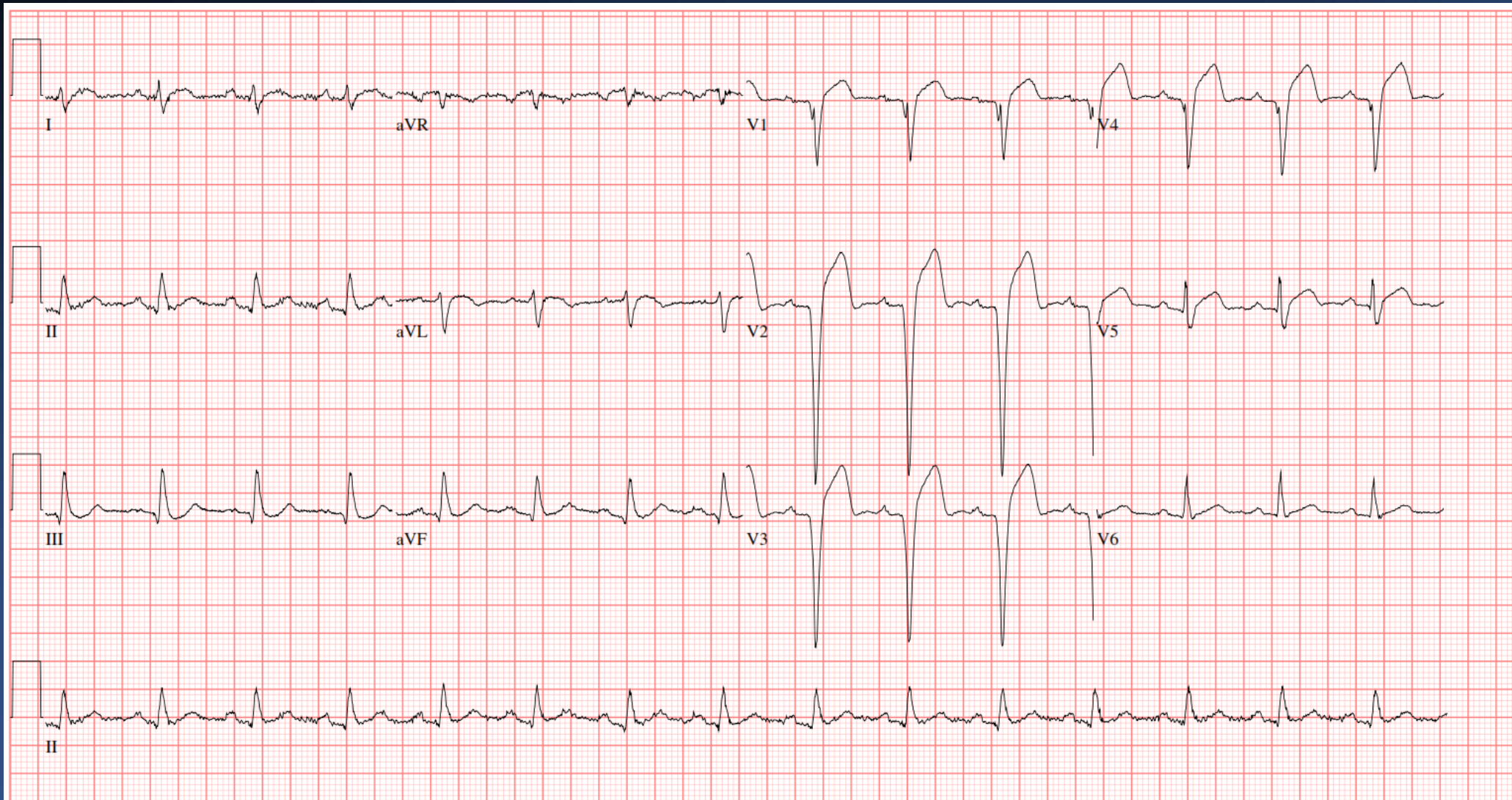
Brief Case Summary

- A 57 year old male
- Unsuccessful PCI due to STEMI at 2 days ago

Past Medical History

- | | | | |
|------------------|-----|------------------------|-----|
| ▪ Diabetes | : Y | ▪ Previous MI | : Y |
| ▪ Hypertension | : Y | ▪ Previous PCI | : Y |
| ▪ Hyperlipidemia | : Y | mLAD: Xience 2.75 x 23 | |
| ▪ Smoking | : N | | |
| ▪ Family History | : N | | |

Electrocardiogram



25mm/s 10mm/mV 150Hz 7.1.1 12SL 241 CID: 1

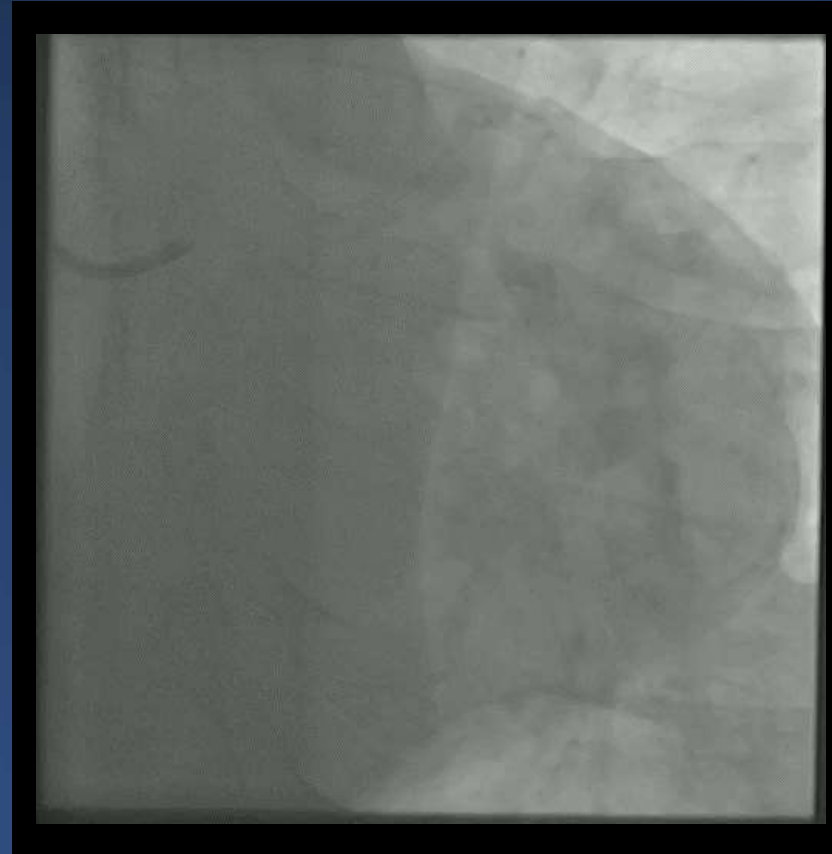
EID: Newly Acquired EDT: ORDER:

Chest X ray



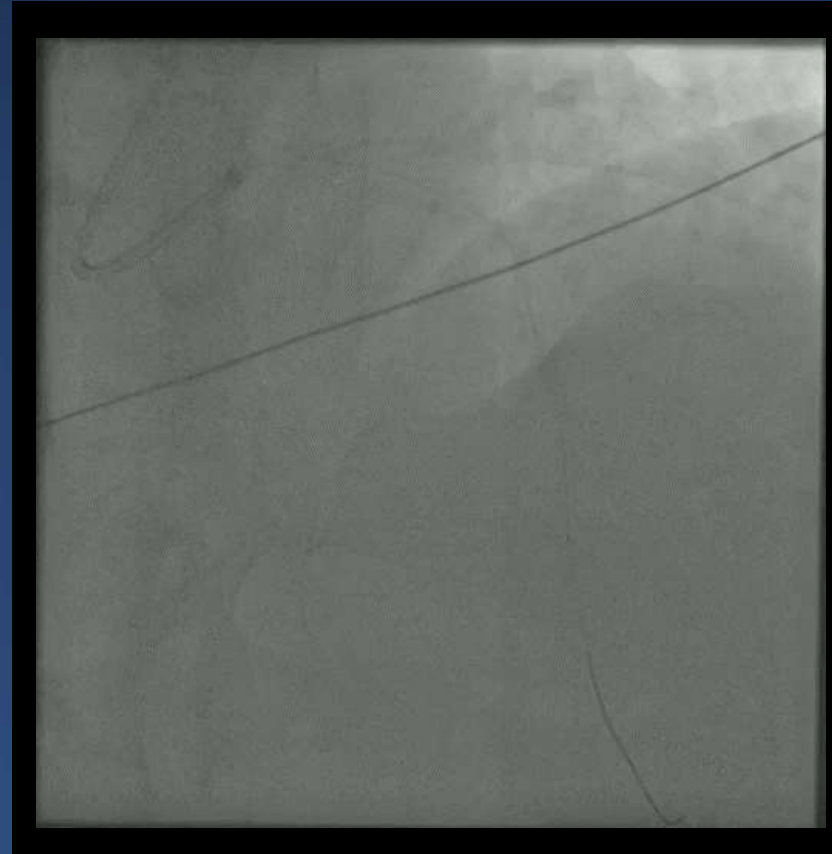
Coronary Angiography

Outside Hospital (2 Days ago)



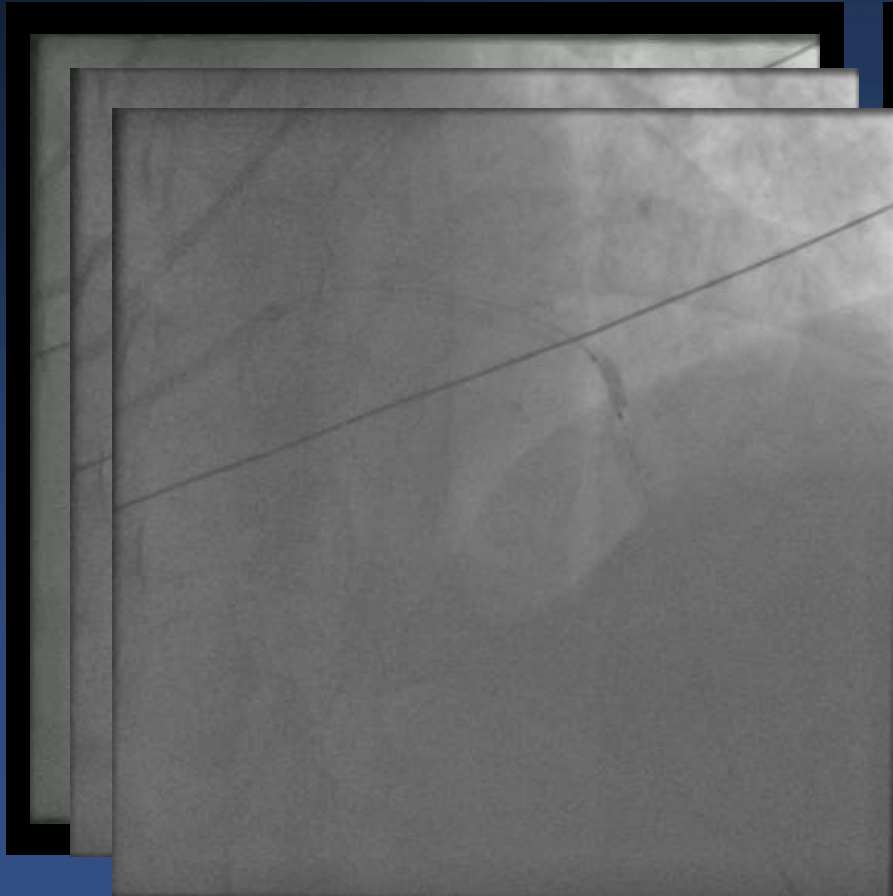
PCI at LAD

Outside Hospital (2 Days ago)



PCI at LAD

Pre-Balloon did not pass the culprit lesion



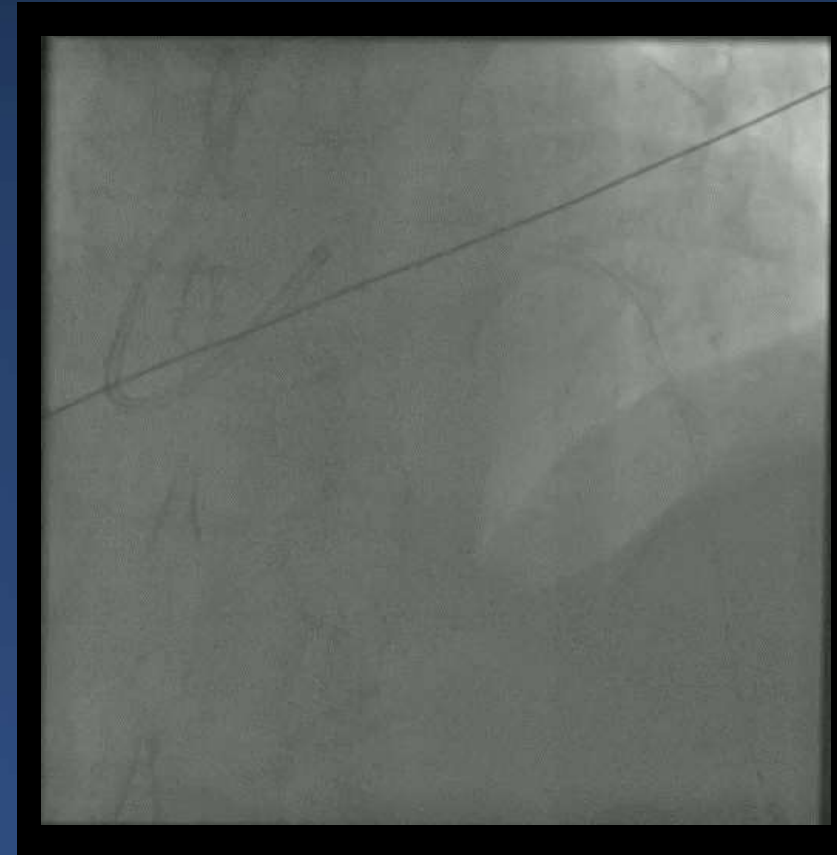
2.5(15) compliant balloon



Rotablator 1.5 burr

PCI at LAD

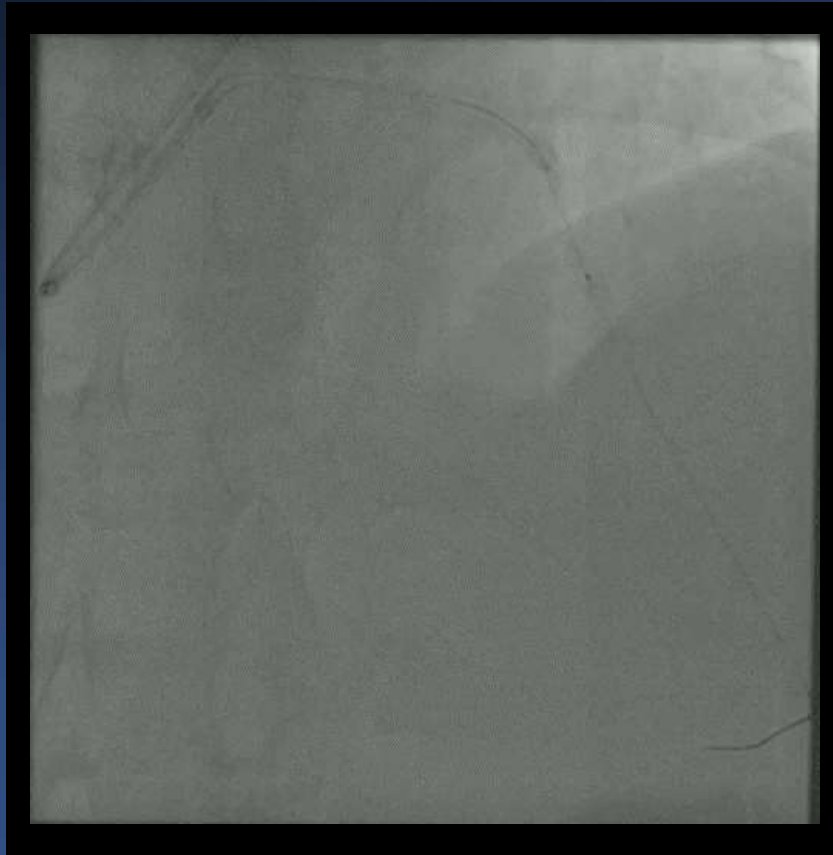
DES deployment at suboptimal position



Xience Sierra 2.75(23)

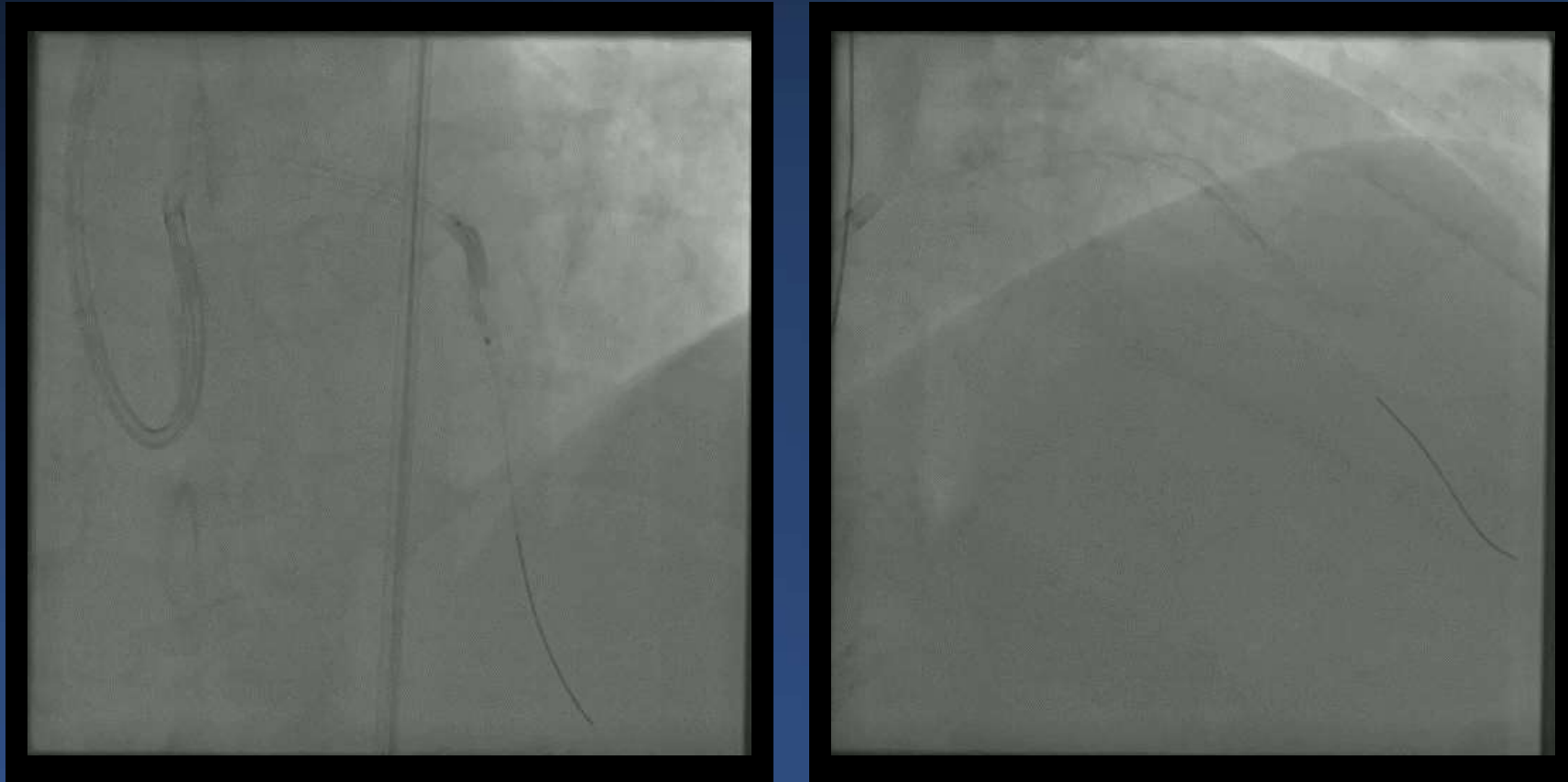
PCI at LAD

Still, balloon did not advance distally to mLAD



PCI at LAD

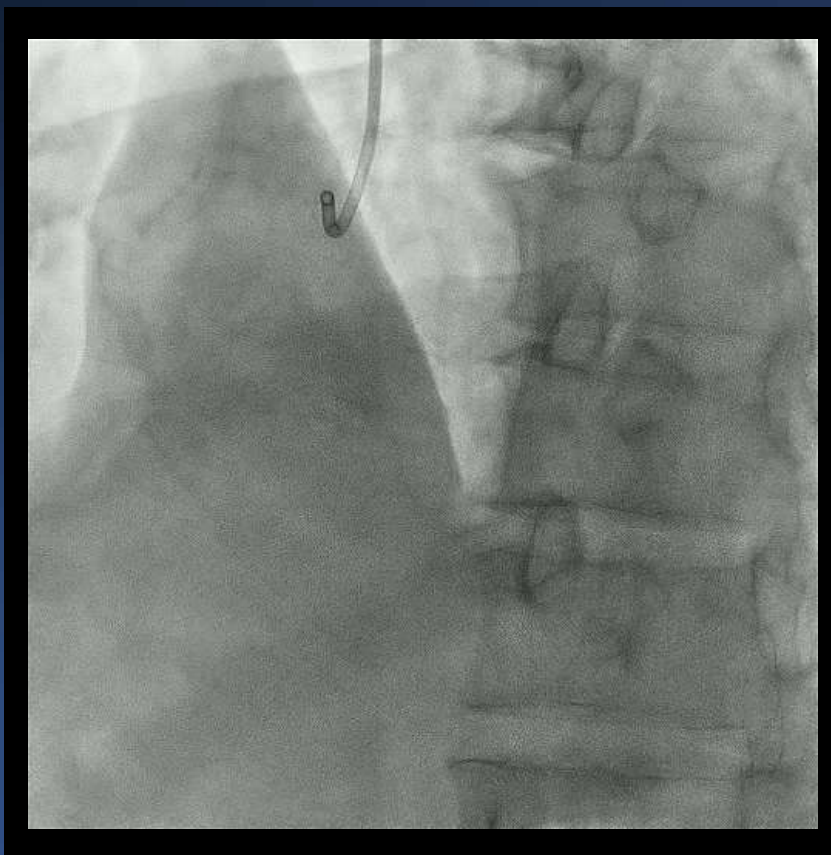
Another stent at the same location with overlap



Xience Sierra 2.75(23) overlap to facilitate the NC balloon delivery

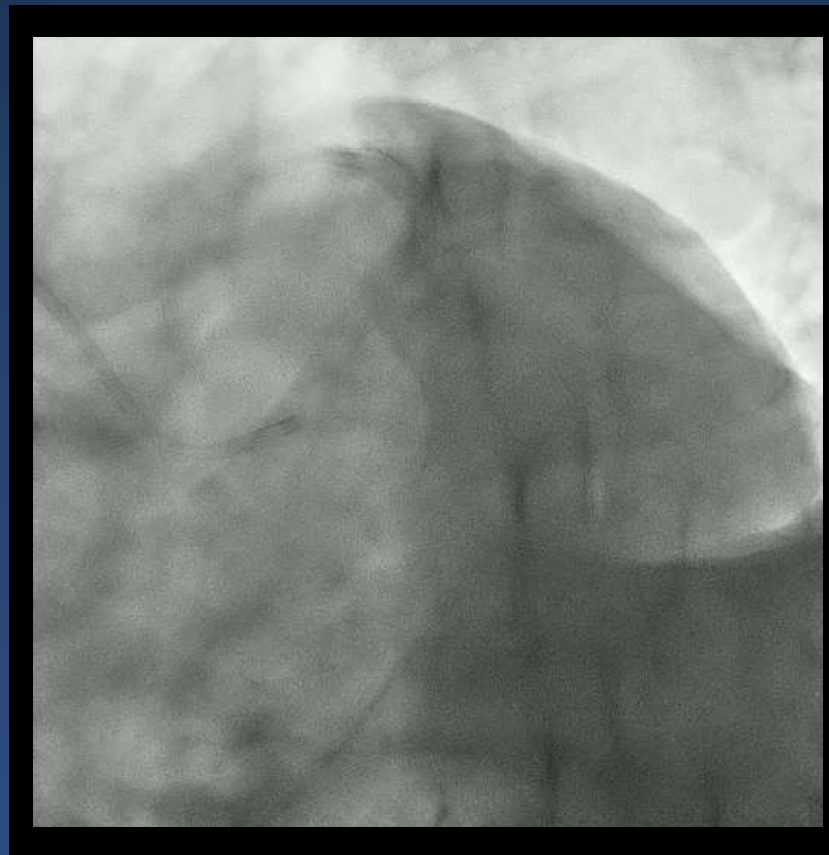
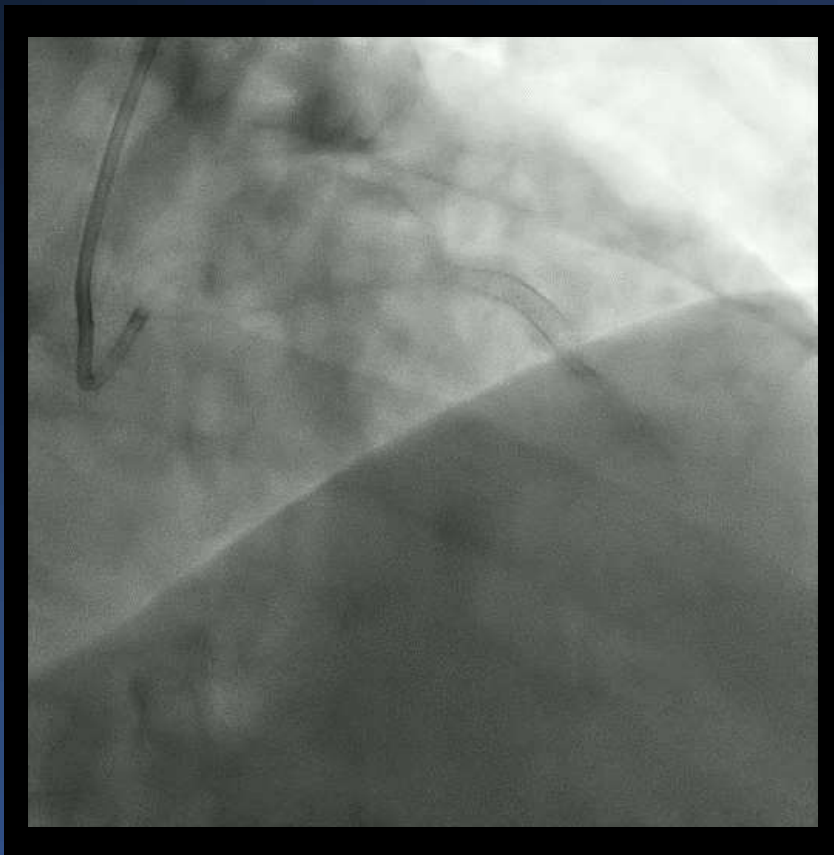
Coronary Angiography

RCA



Coronary Angiography

LAD



Transthoracic Echocardiography

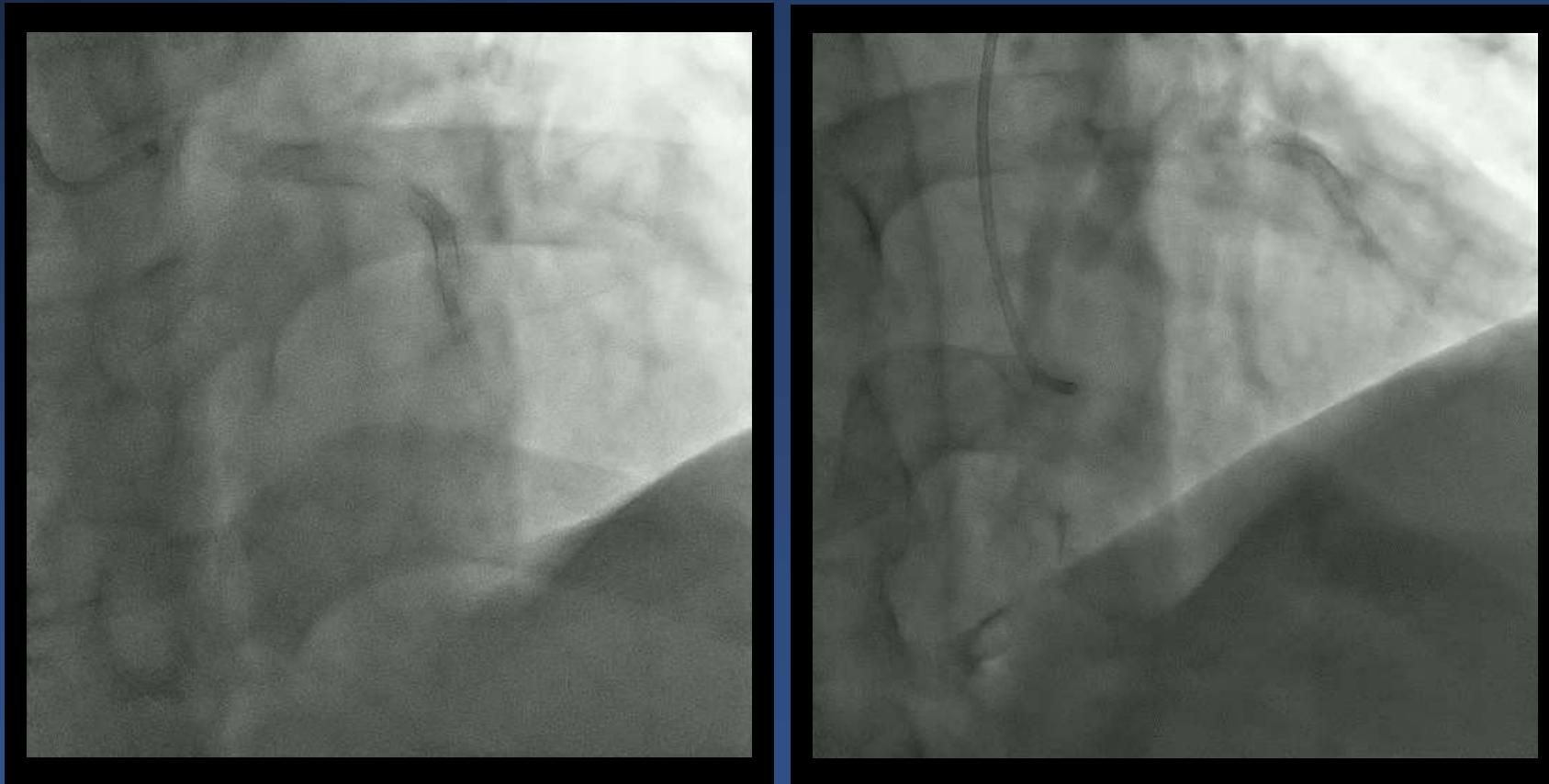
- EF 56%
- Akinesia of LV apex and hypokinesia of mid anteroseptum

Myocardial Perfusion Imaging

- Fixed large sized severely decreased to absent perfusion in apical-mid anterior, apical septal, mid anteroseptal wall. apical inferior wall

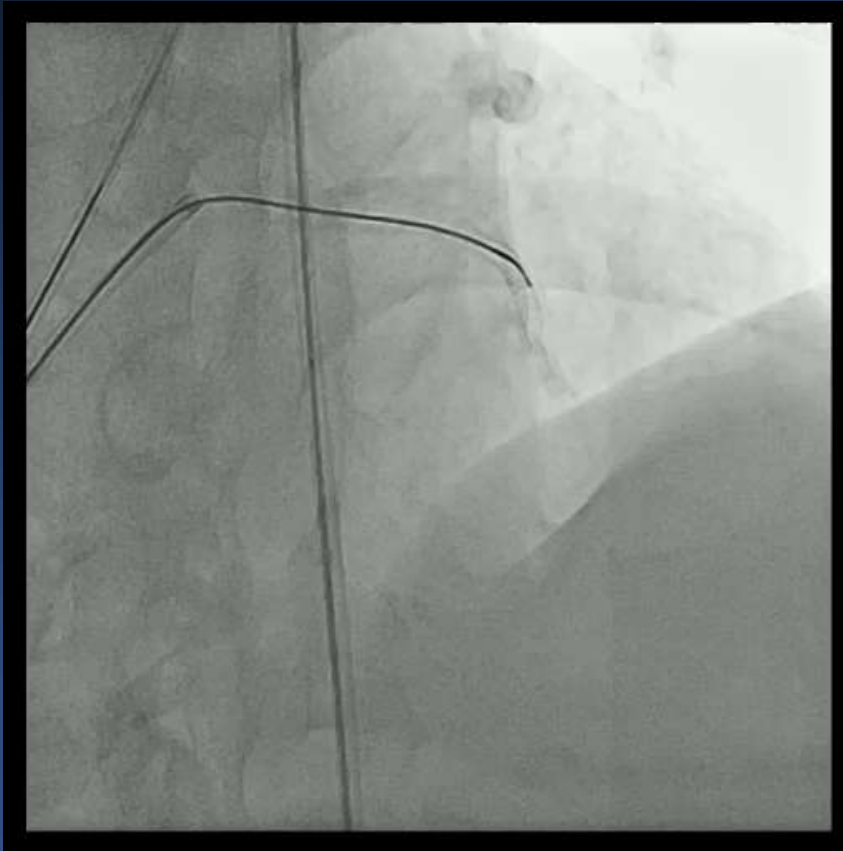
Myocardial Perfusion Imaging

- Fixed large sized severely decreased to absent perfusion in apical-mid anterior, apical septal, mid anteroseptal wall. apical inferior wall



PCI at LAD

Coronary Micro-Guide catheter (Corsair)



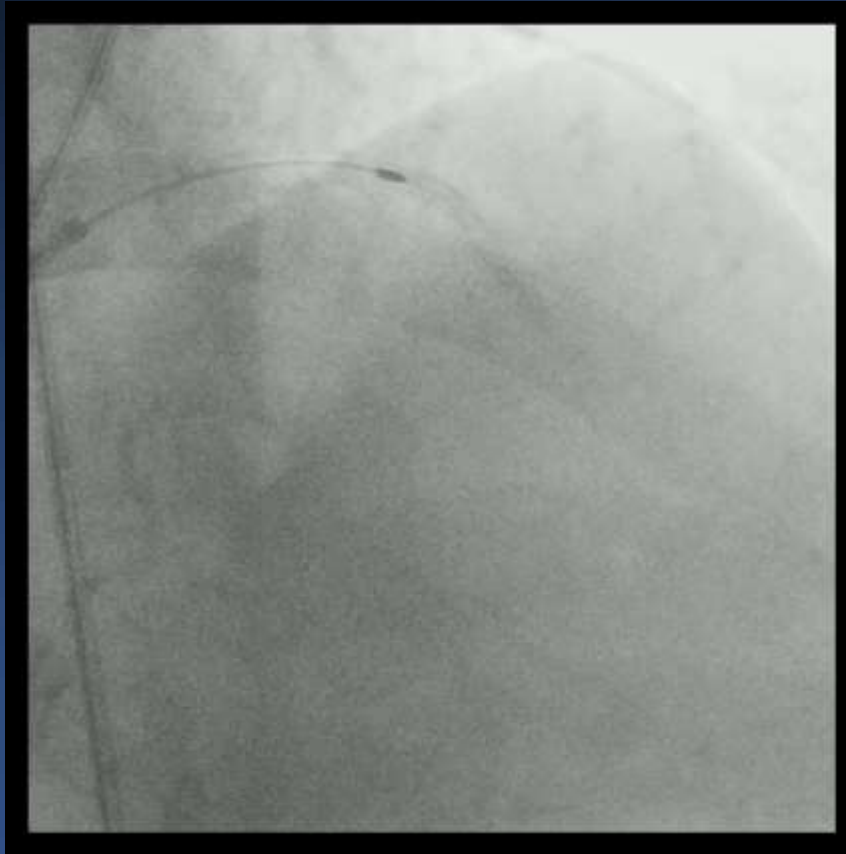
BMW 0.014" – 190cm



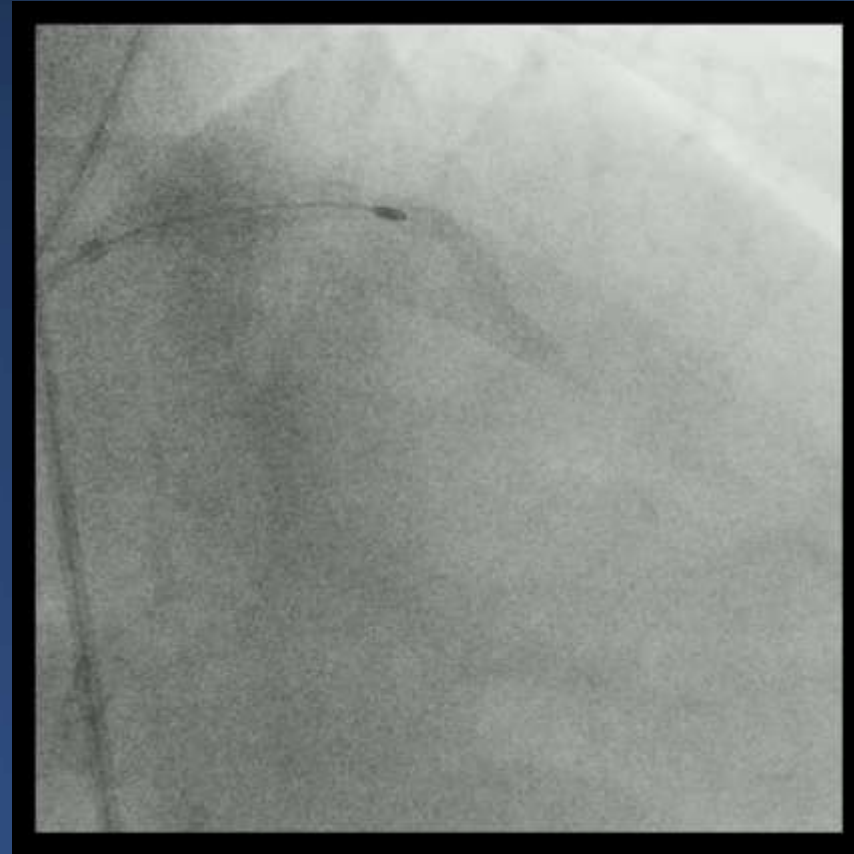
Fielder XT-R 0.014" – 190cm

PCI at LAD

Rotablation for heavy calcification



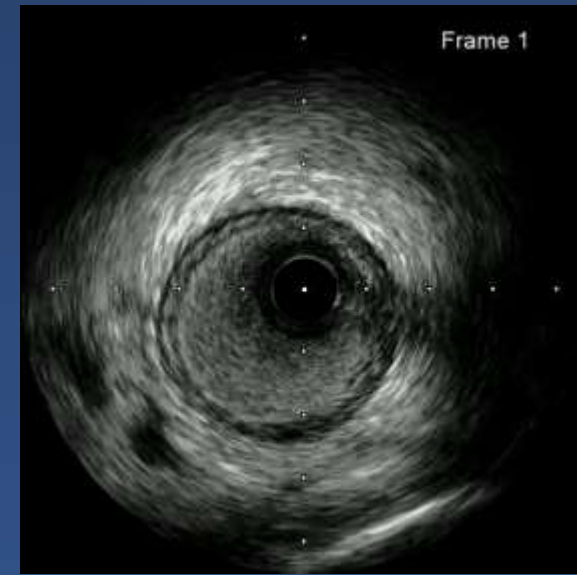
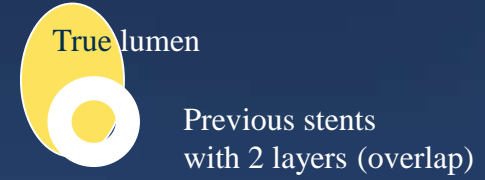
Rotablator 1.25 burr, 208000 bpm



Rotablator 1.5 burr, 192000 bpm

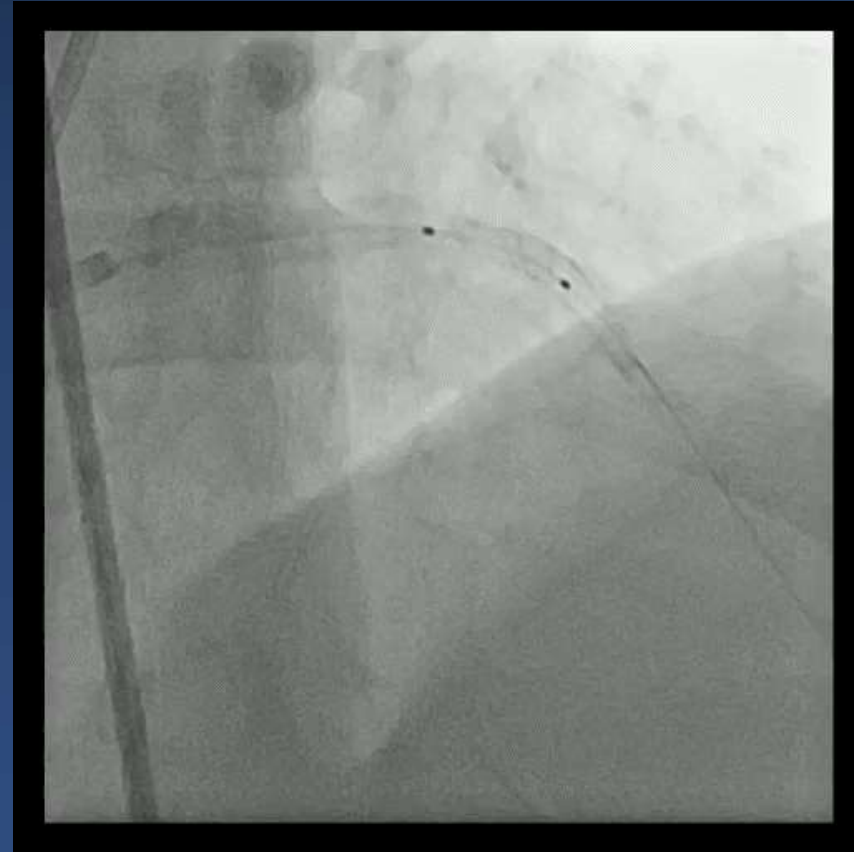
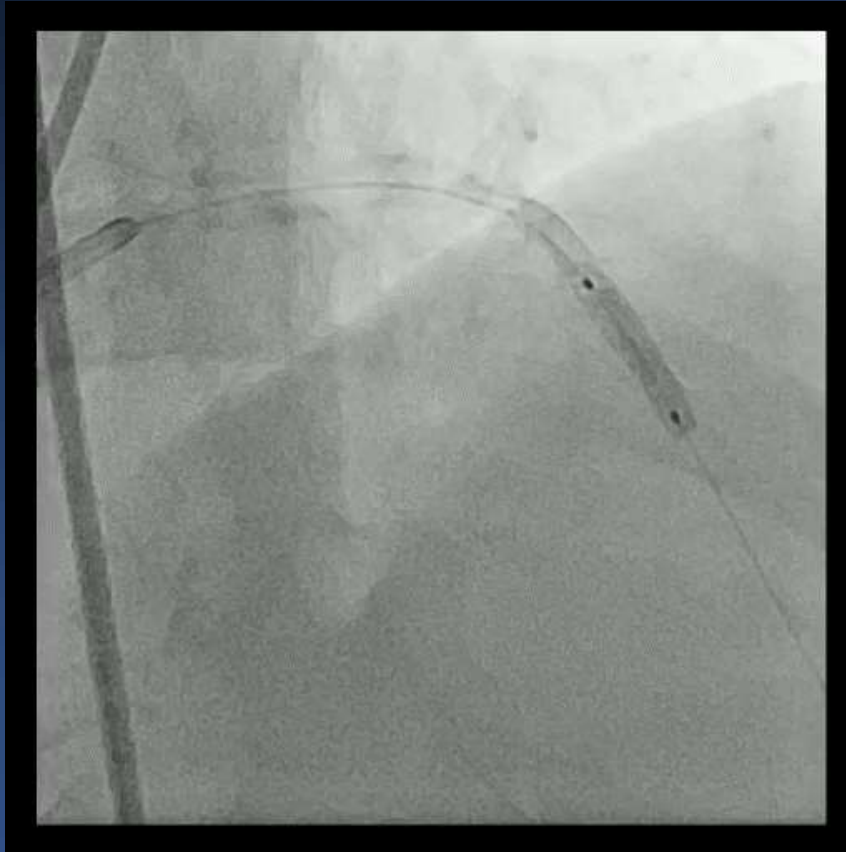
IVUS

Plaque dissection and Subintimal course



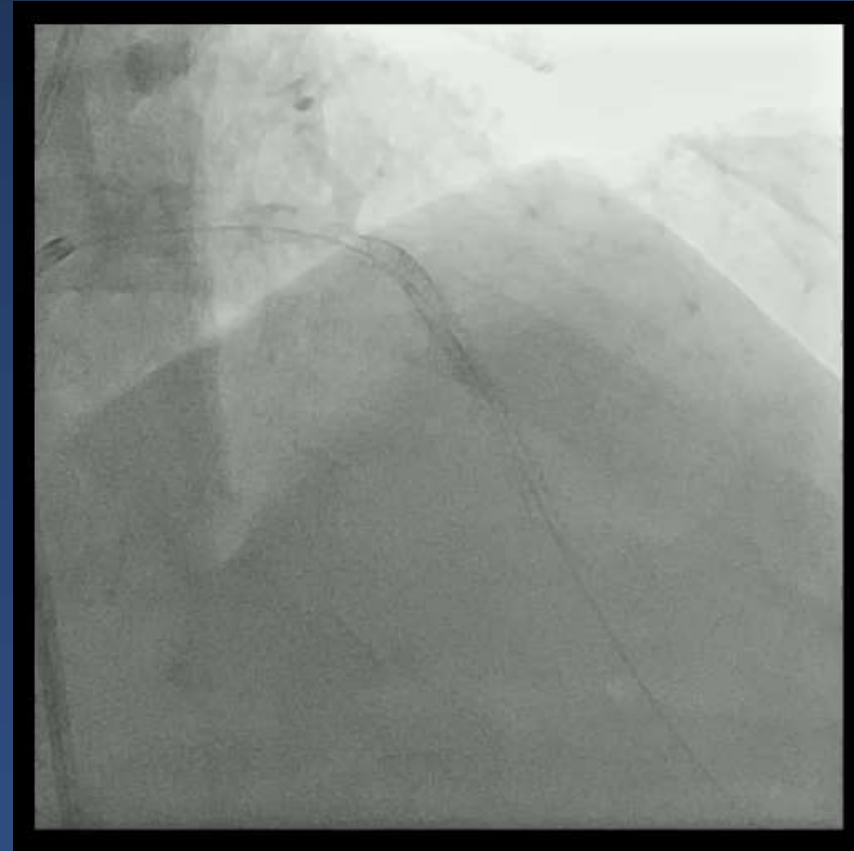
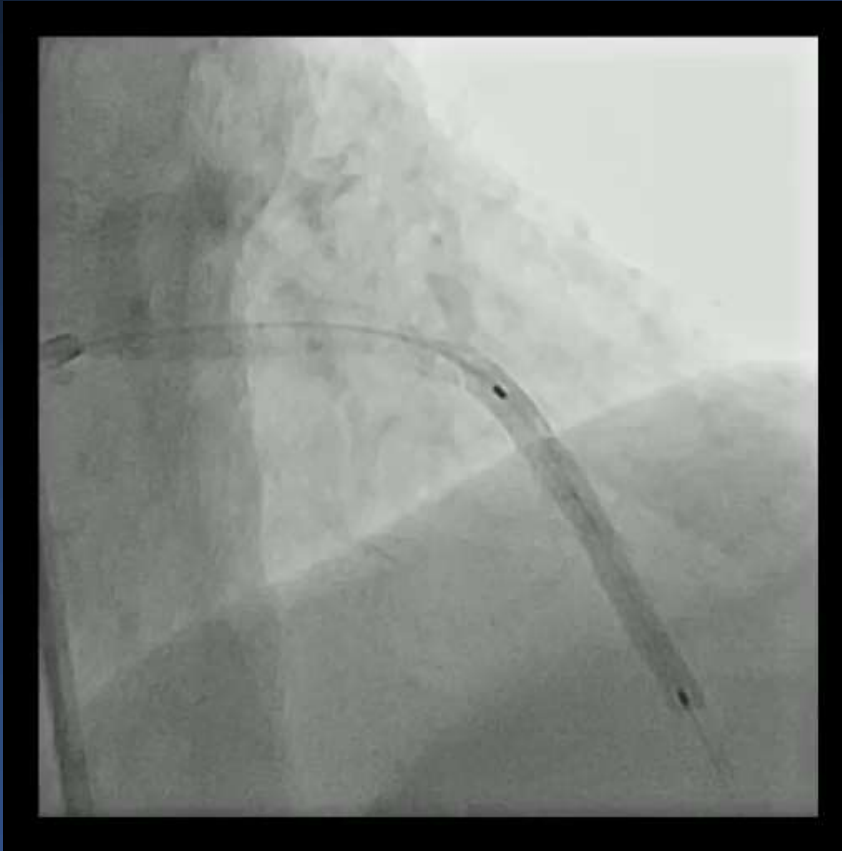
POBA at LAD

Sapphire NC 3.25(15) upto 22 atm



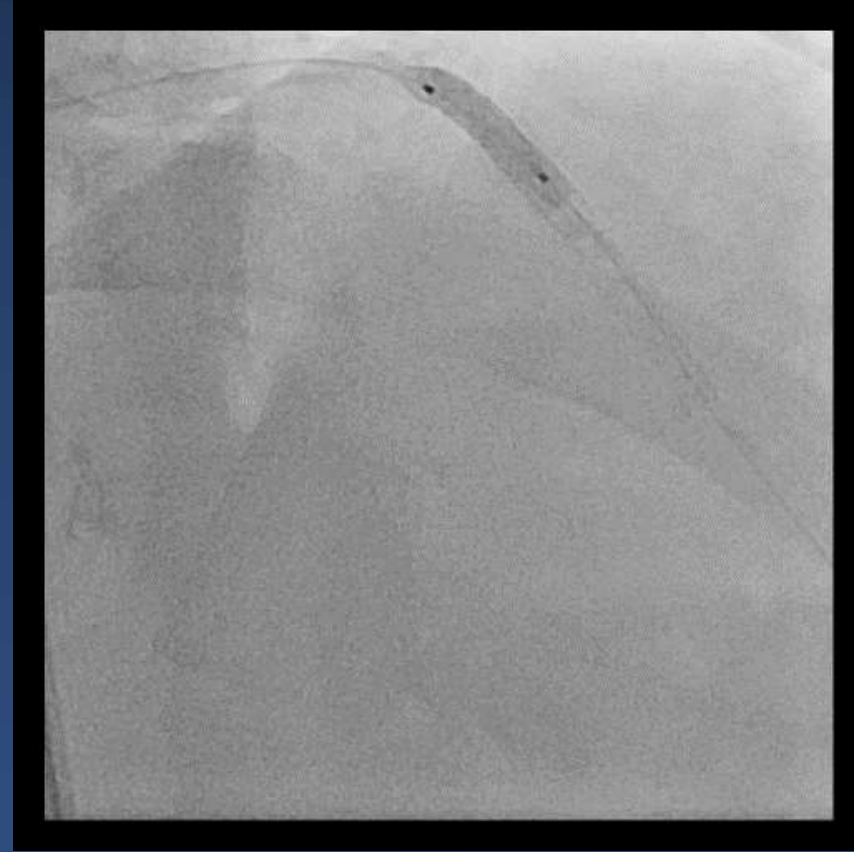
DES at mLAD

Xience Sierra 3.25(33) upto 16 atm

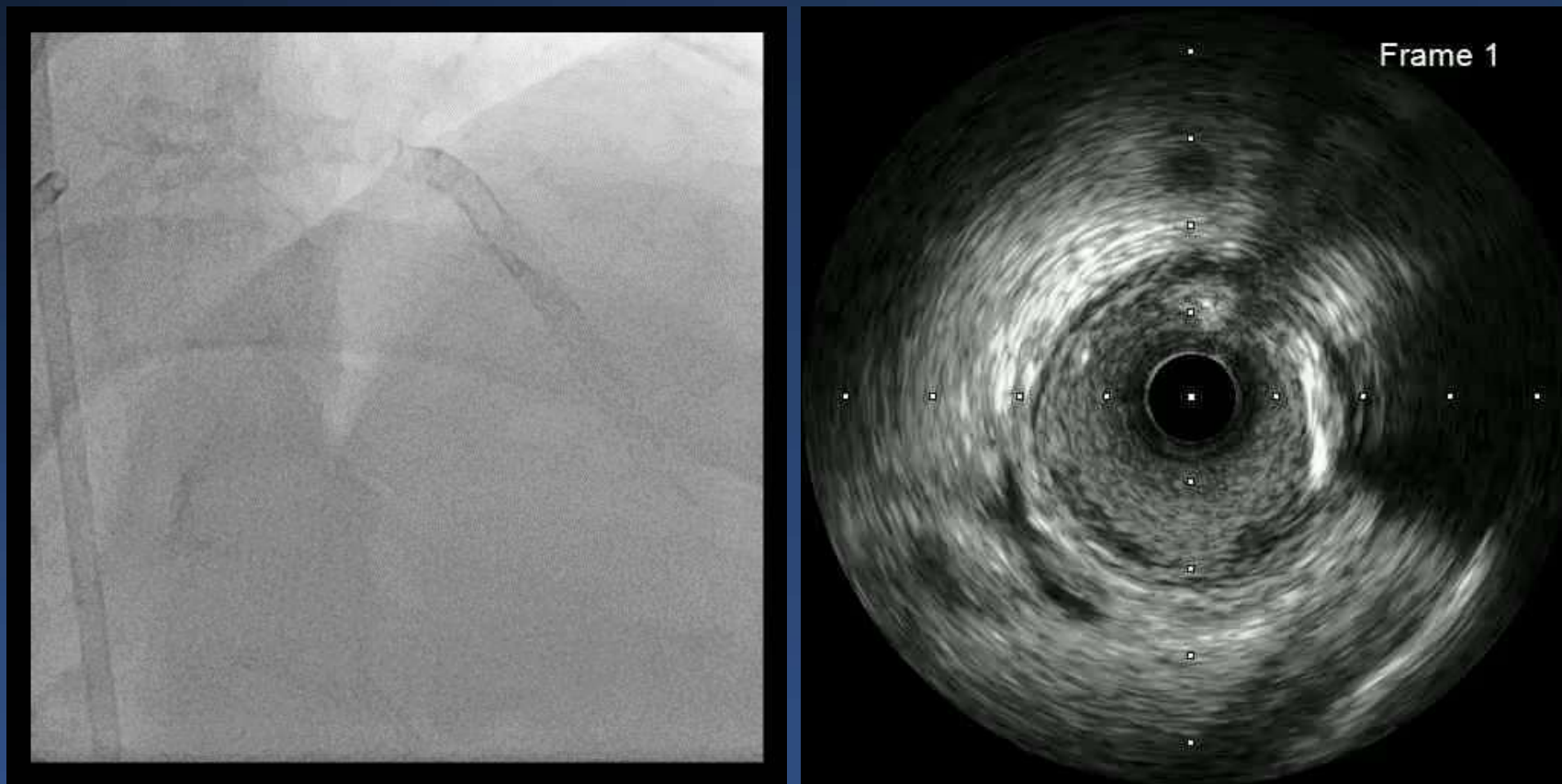


LAD stent optimization

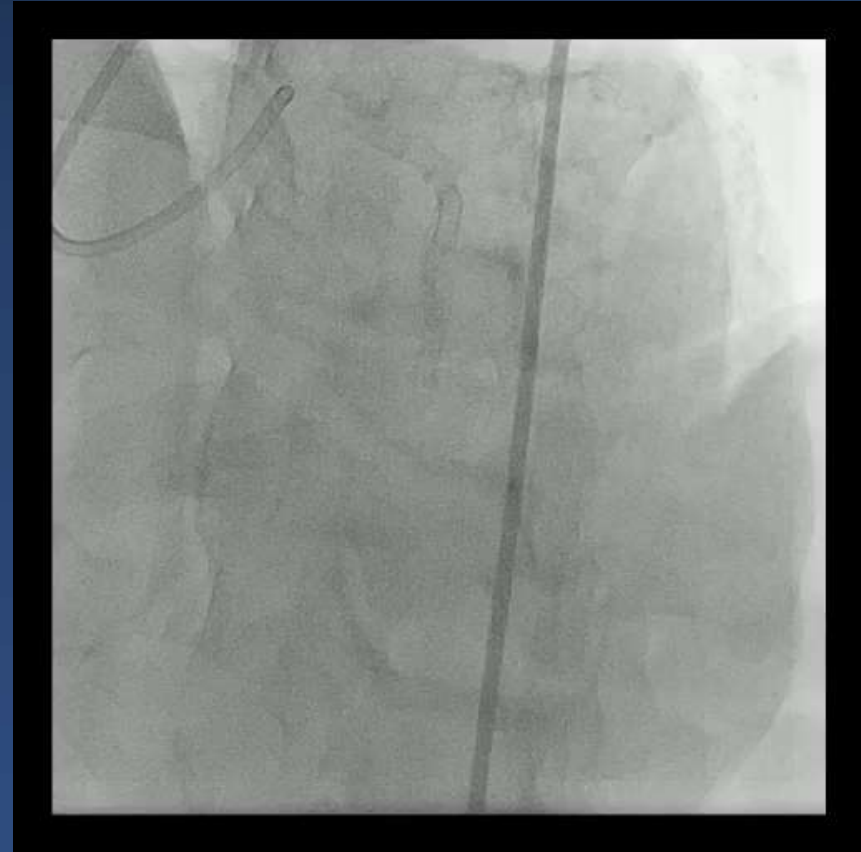
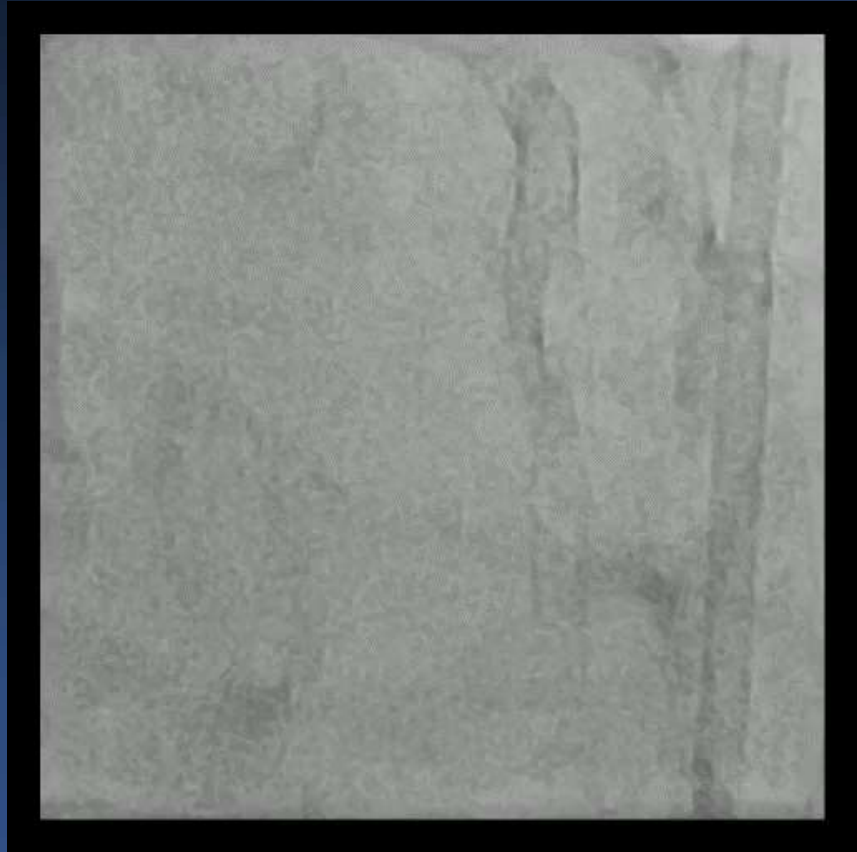
Sapphire NC 3.25(15) upto 22 atm



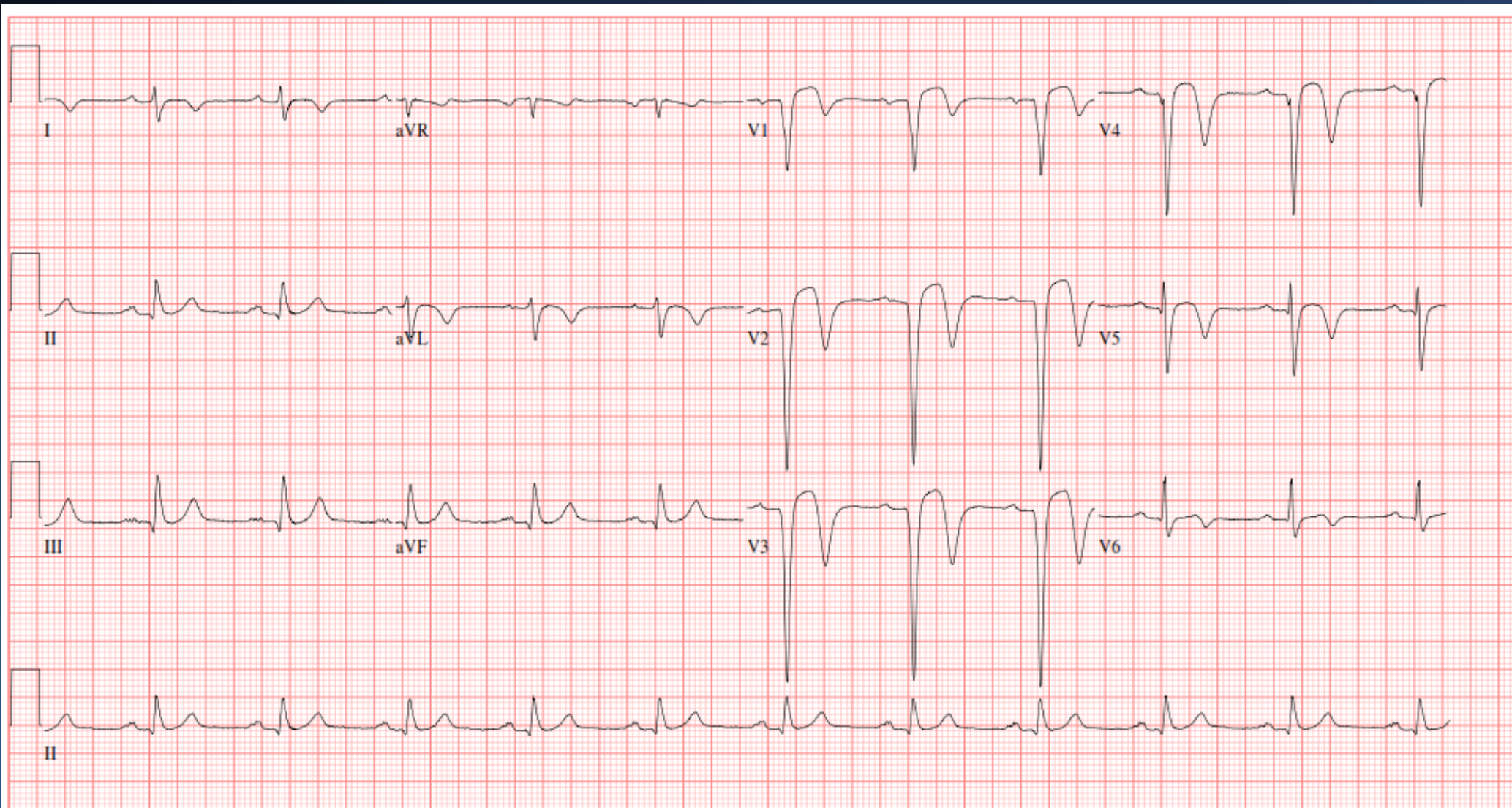
Final IVUS



The Final Results



Follow up ECG



25mm/s 10mm/mV 150Hz 7.1.1 12SL 239 CID: 112

EID:2 EDT: 14:20 25-NOV-2019 ORDER: