

The Watchman FLX advanced technology and step by step



HIDEHIKO HARA MD, PhD

Toho University Ohashi Medical center, Tokyo, JAPAN

**10th AP VALVES & VIRTUAL
STRUCTURAL HEART**
AUGUST 5-6, 2021

C O I

Name: Hidehiko Hara

There is no COI to disclose on this presentation.



Points of design change on WATCHMAN FLX



WATCHMAN™



WATCHMAN FLX™

WATCHMAN FLX Design Change Goal :

- Improved safety
- Improved procedure accuracy
- Expanded treatable left atrial appendage indications

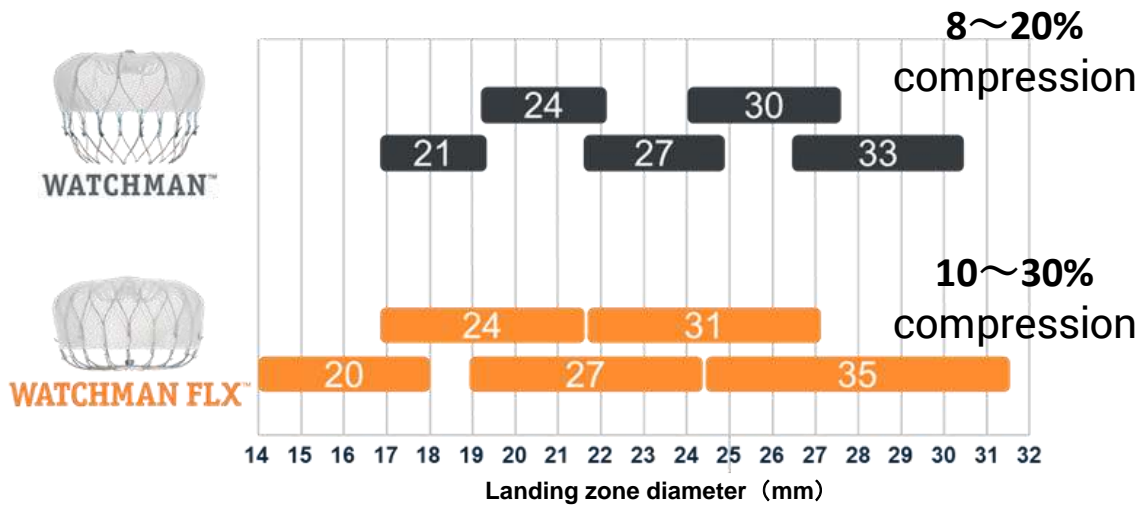
Points of design change from WATCHMAN to WATCHMAN FLX



1. Distal fluorochip with visible distal end



2. Can be fully re-capped, partially re-capped and advanced within the LAA



3. Wide LAA landing zone diameter of 14-31.5 mm

Maximum diameter: length ratio
1: 1/2



WATCHMAN FLX 27mm

4. Shortening device length

Points of design change from WATCHMAN to WATCHMAN FLX

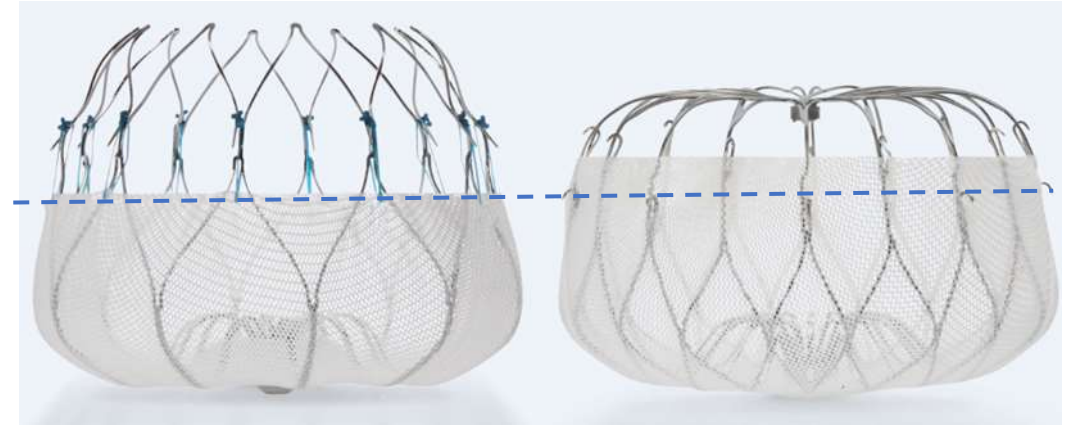


「J」 anchors



"Straight line" anchor
(current)

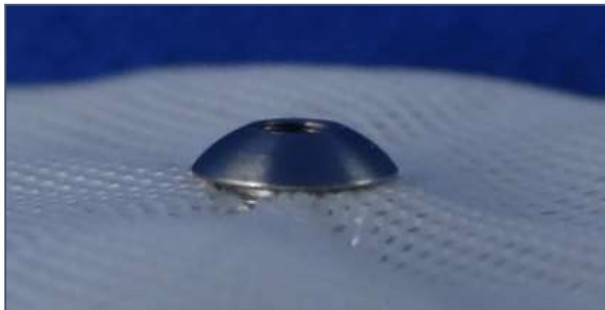
5. 2 rows / 18 "J" type anchors
(currently 10)



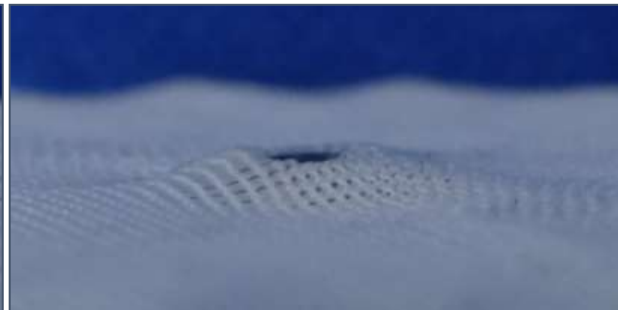
WATCHMAN 27mm

WATCHMAN FLX 27mm

6. PET filter length



WATCHMAN



WATCHMAN FLX

7. 70% reduction in screw (metal part) exposure



WATCHMAN FLX



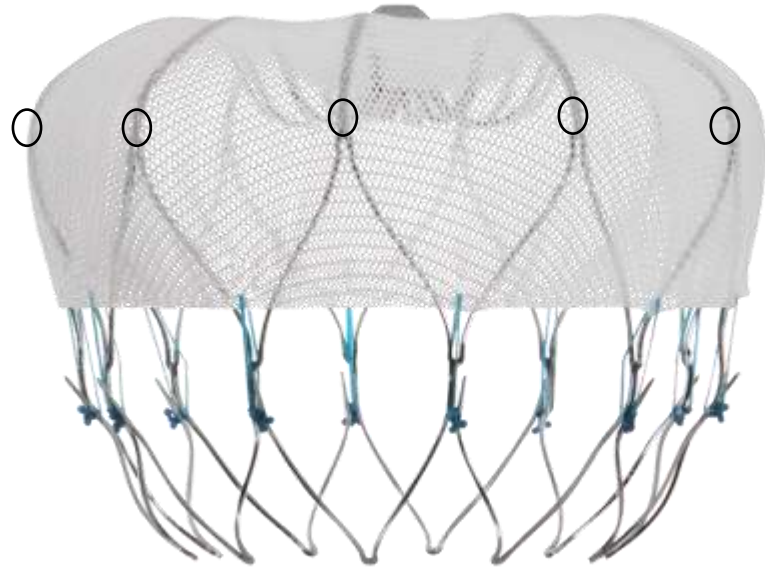
WATCHMAN

8. 18 strut frames (currently 10)

WATCHMAN FLX promotes closure and endothelialization

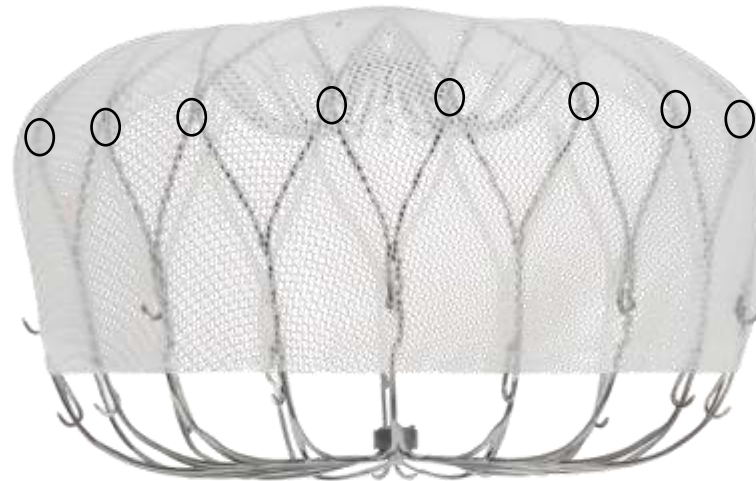
80% increase in contact points at LAA entrance to improve left atrial appendage closure

10 strut frames

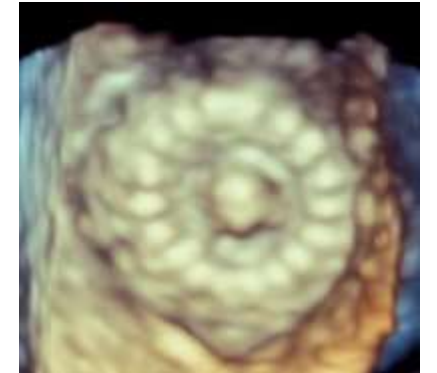


WATCHMAN™

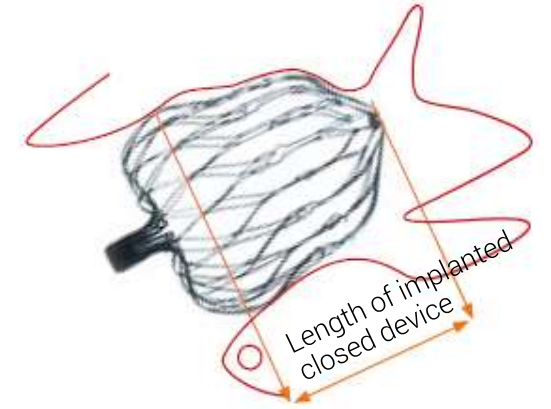
18 strut frames



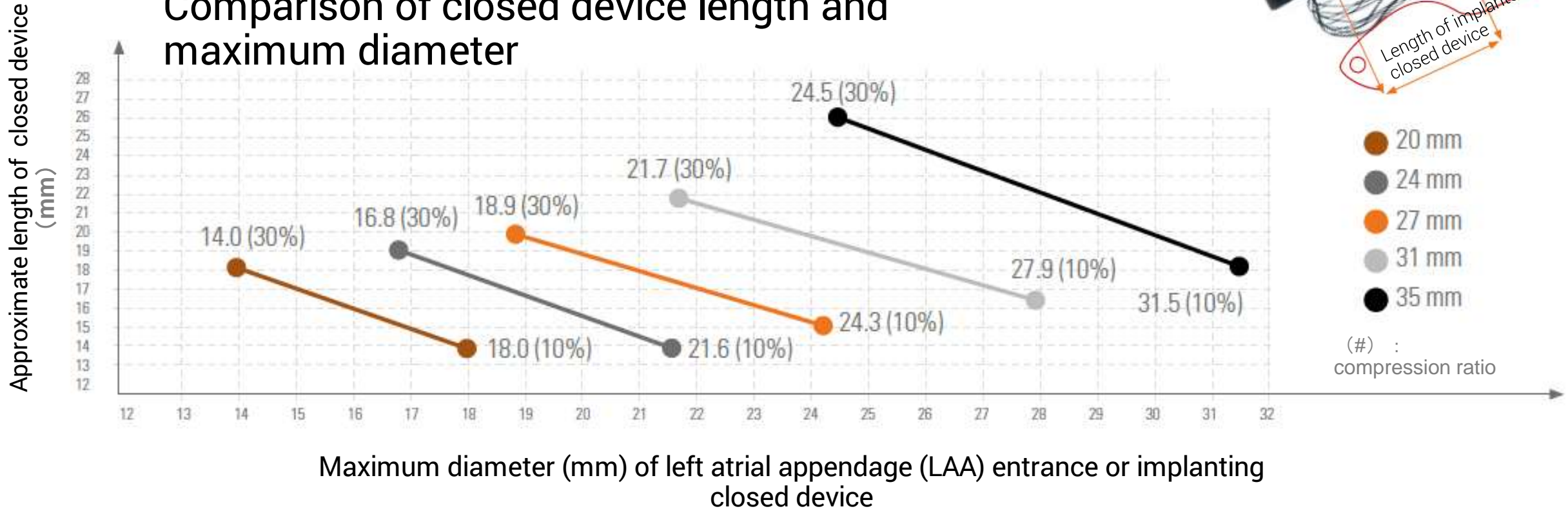
WATCHMAN FLX™



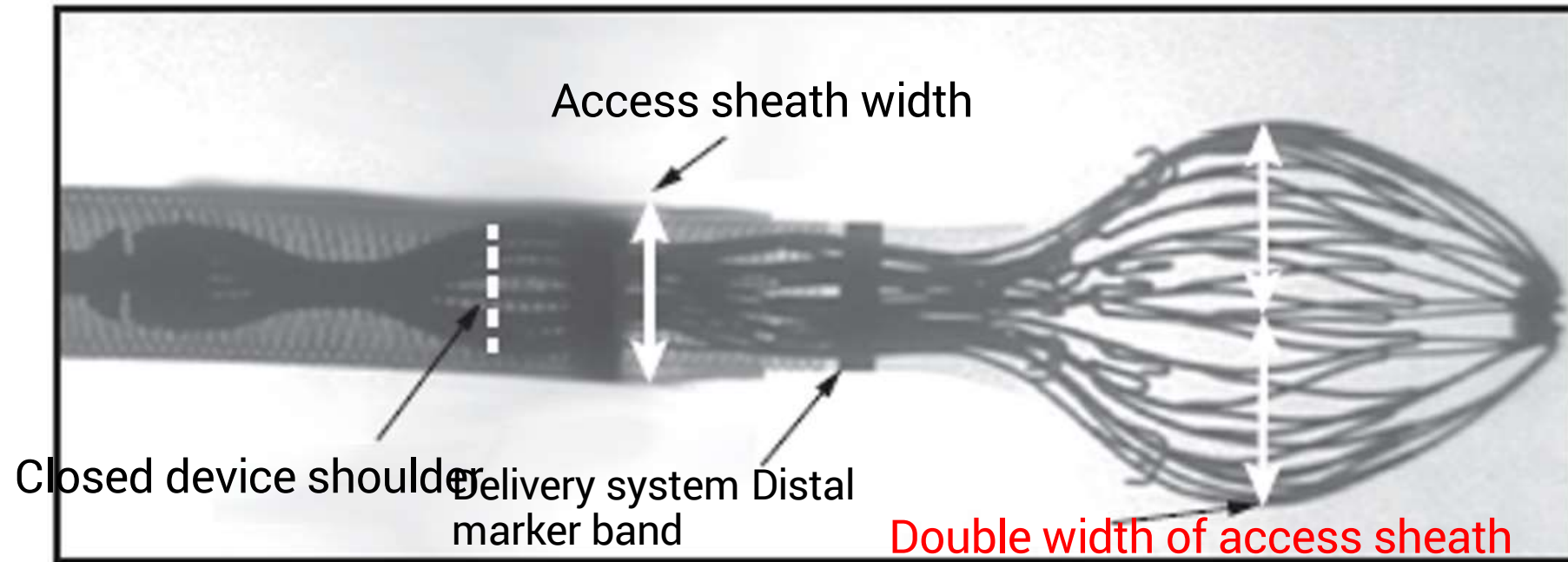
WATCHMAN FLX size selection



Comparison of closed device length and maximum diameter



FLX ball creation



Two types of deployment techniques

When the FLX Ball *doubles* the access sheath diameter, you can use either the Unsheathe method, Advance method, or a combination of the two methods.

Unsheathe method

Advance method

combination
method

CASE

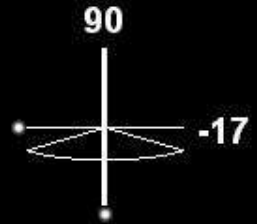
- 80s gentleman
- History of DM, HT, CKD, and long standing A fib
- 1st stroke in December 2020
- 2nd stroke on Edoxaban in April 2021
- CHA2DS2-VASc: 6, HASBLED: 4

Adult Echo

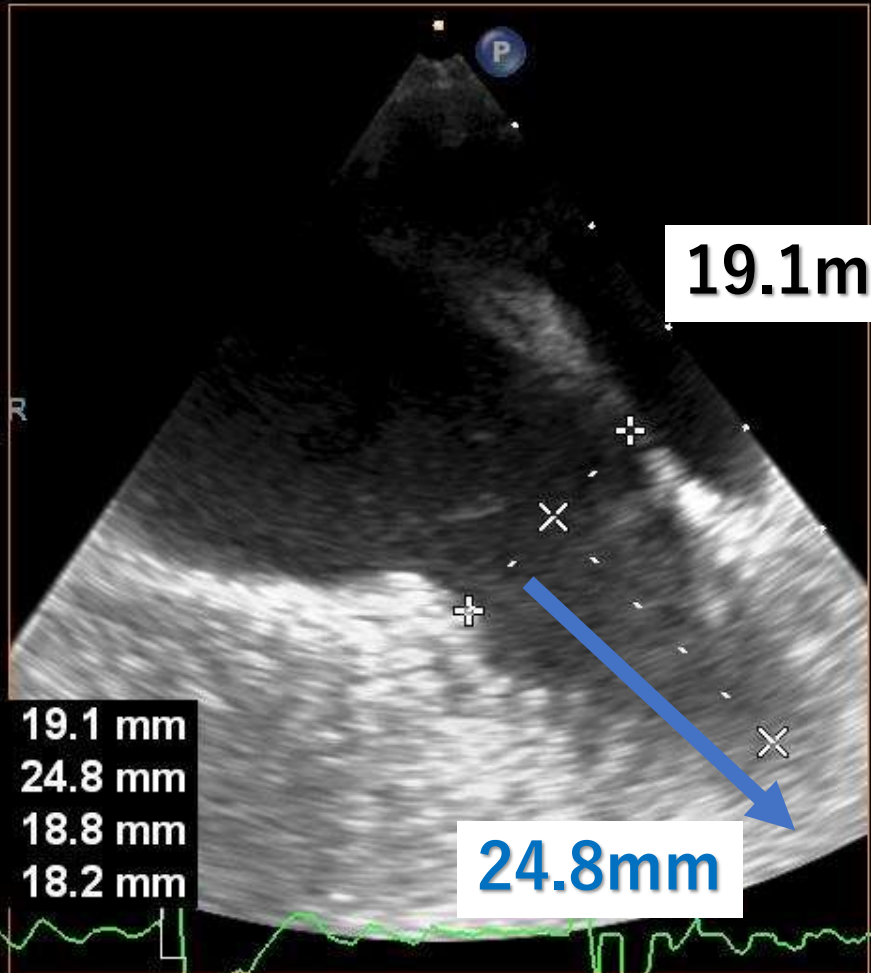
X8-2t
32Hz
7.1cm

TISO.2 MI 0.5

xPlane
57%
57%
50dB
P Off
Gen



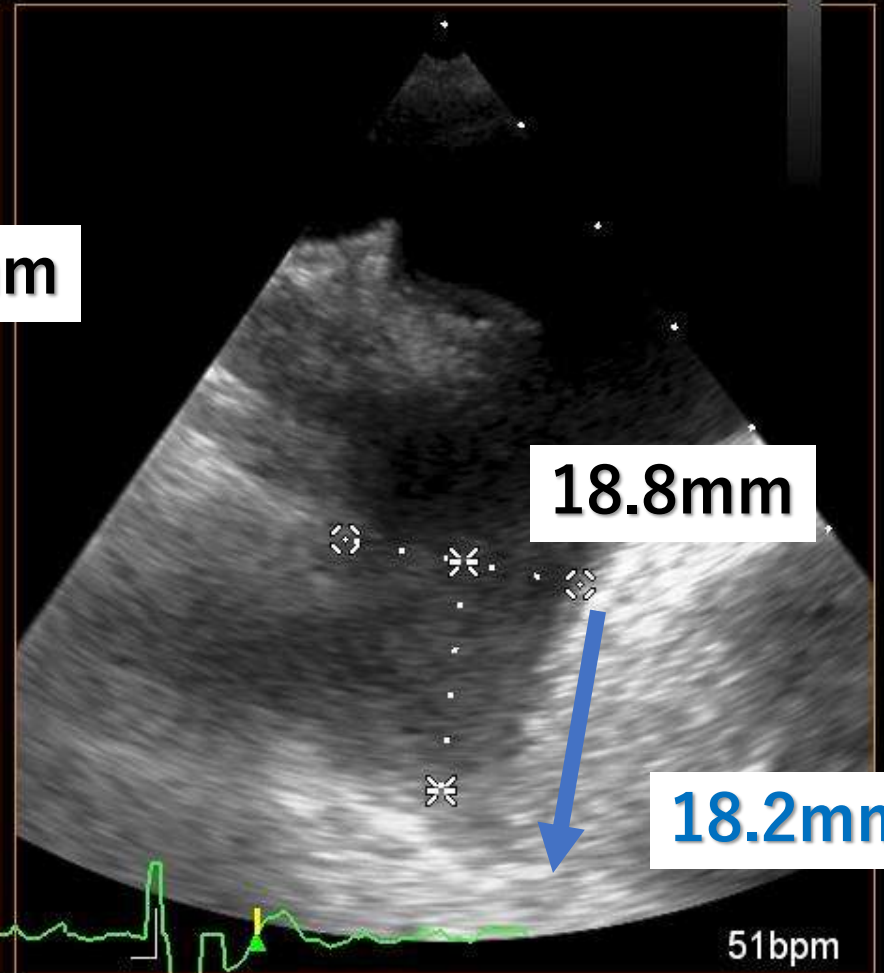
M4



19.1mm

24.8mm

- ✦ Dist 19.1 mm
- ✕ Dist 24.8 mm
- ◇ Dist 18.8 mm
- Dist 18.2 mm



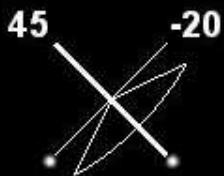
18.8mm

18.2mm

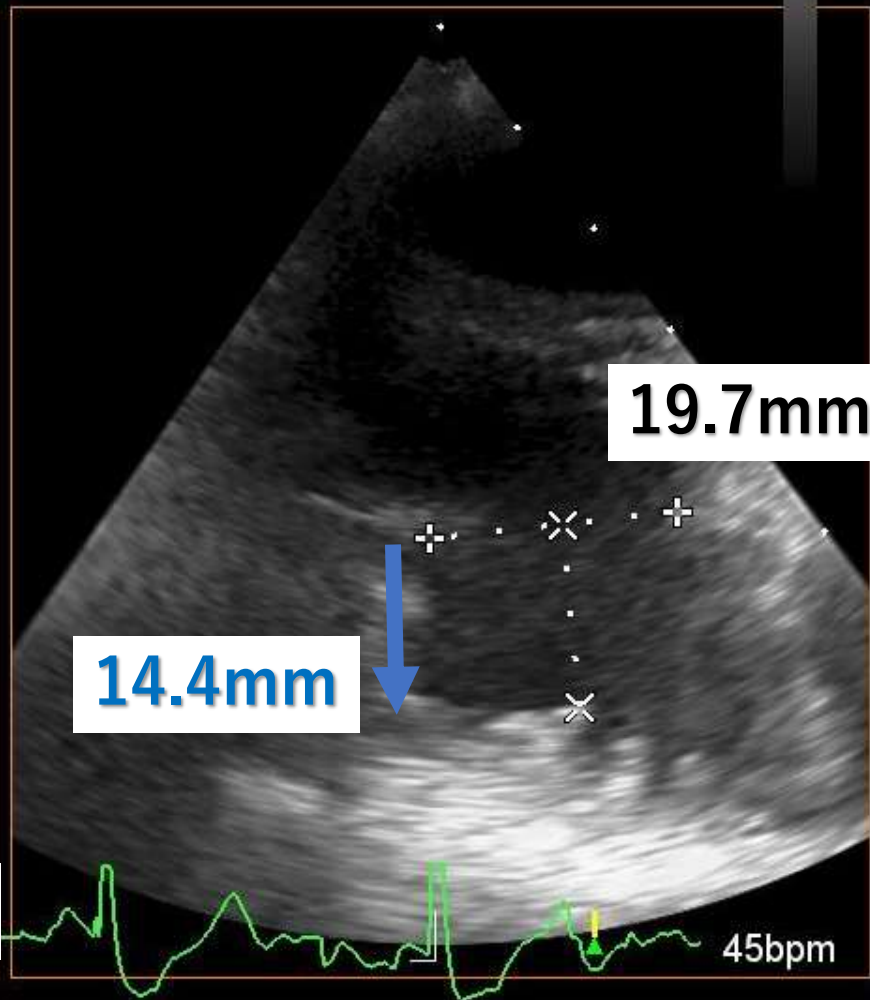
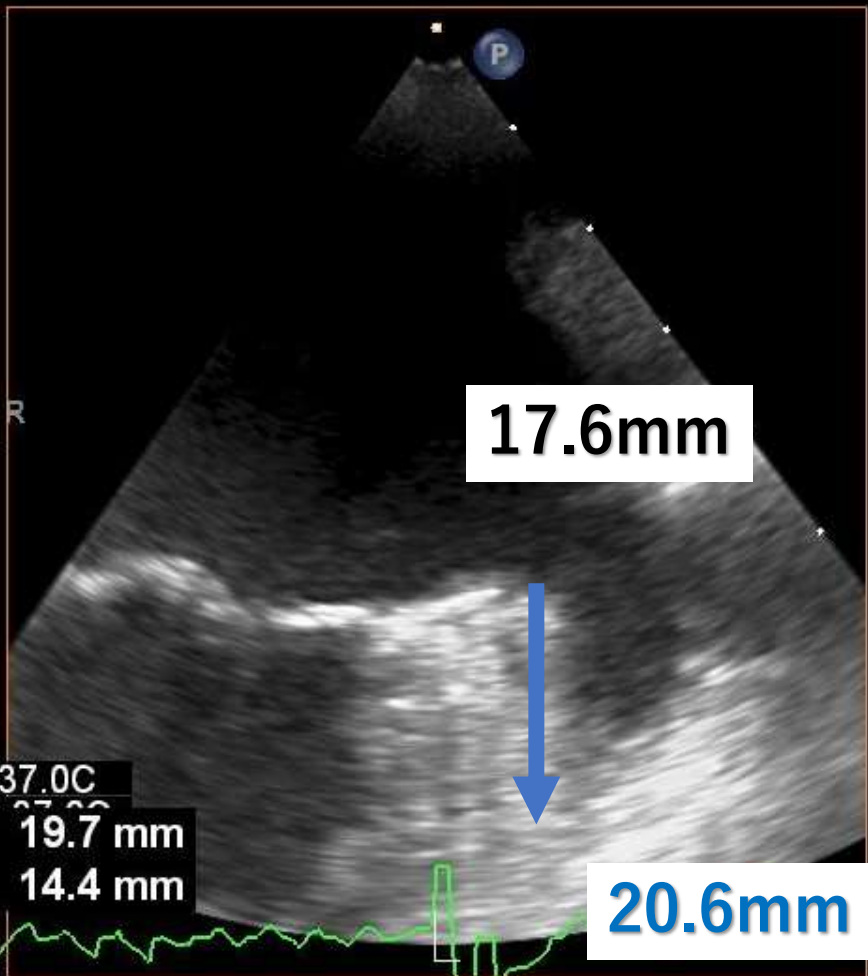
51bpm

32Hz
7.1cm

xPlane
57%
57%
50dB
P Off
Gen



M4



Adult Echo

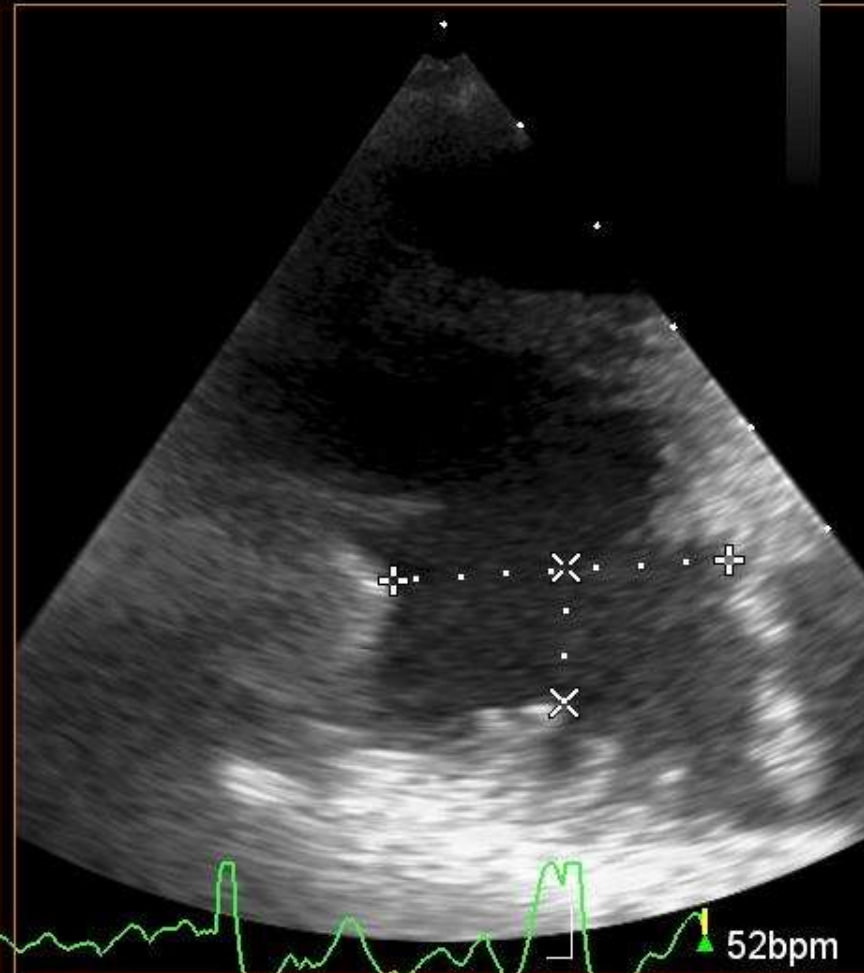
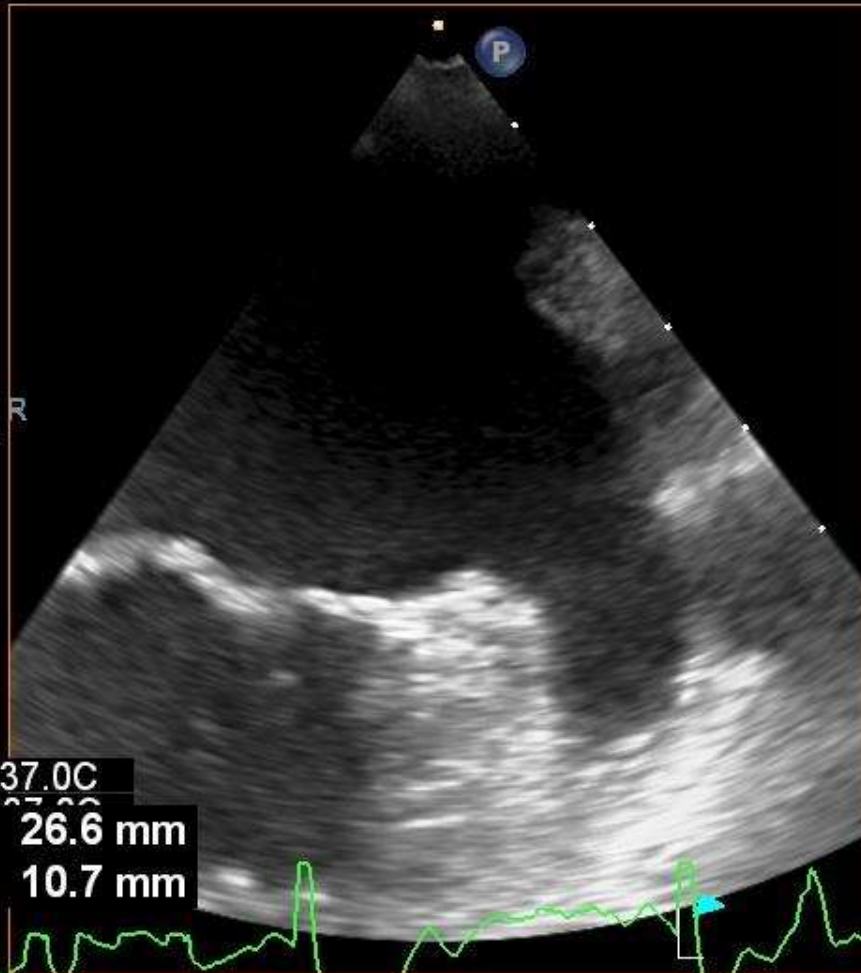
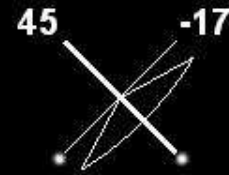
X8-2t
32Hz
7.1cm

TISO.2 MI 0.5

M4

xPlane

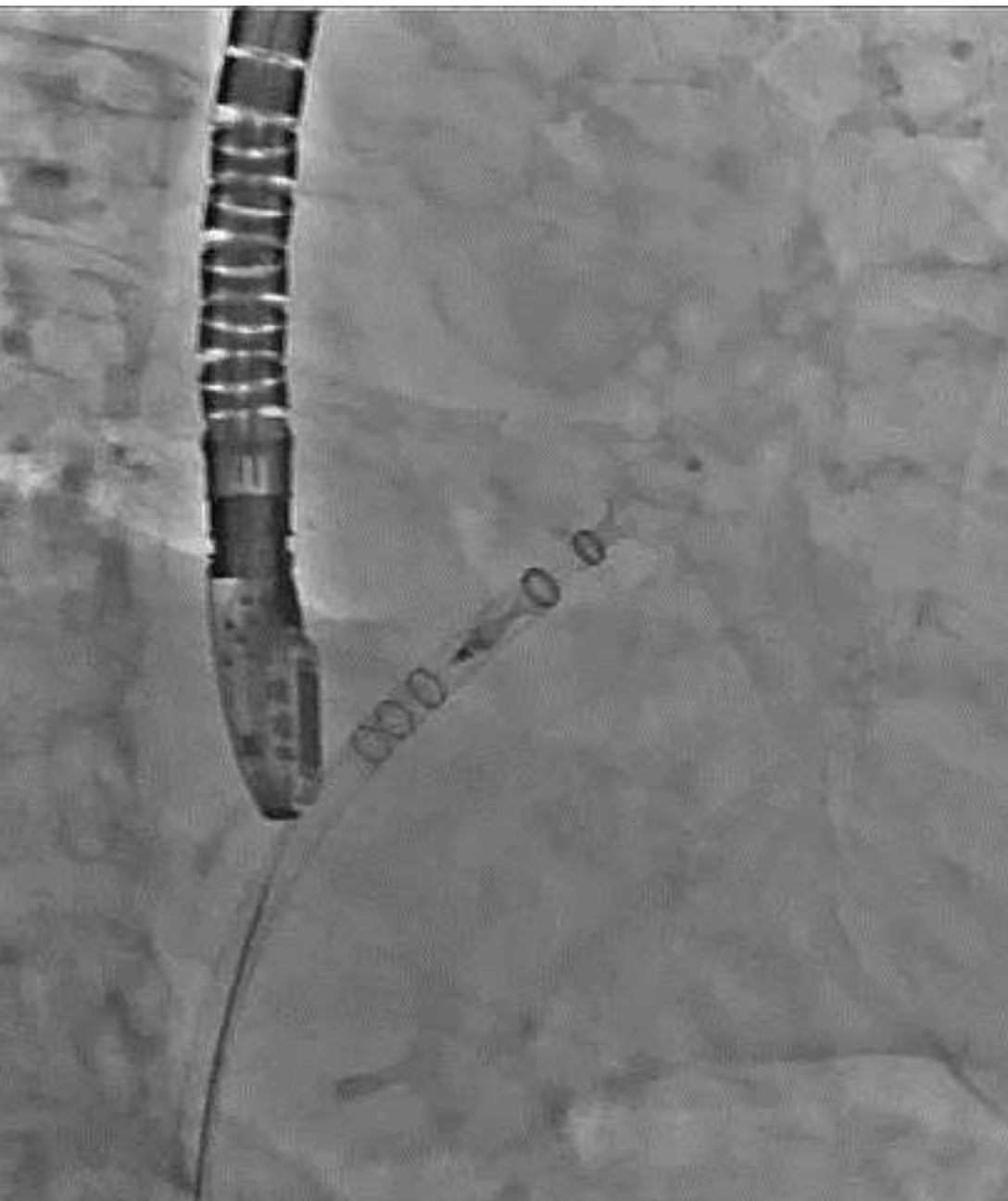
57%
57%
50dB
P Off
Gen



PAT T: 37.0C
+ Dist 26.6 mm
x Dist 10.7 mm

52bpm





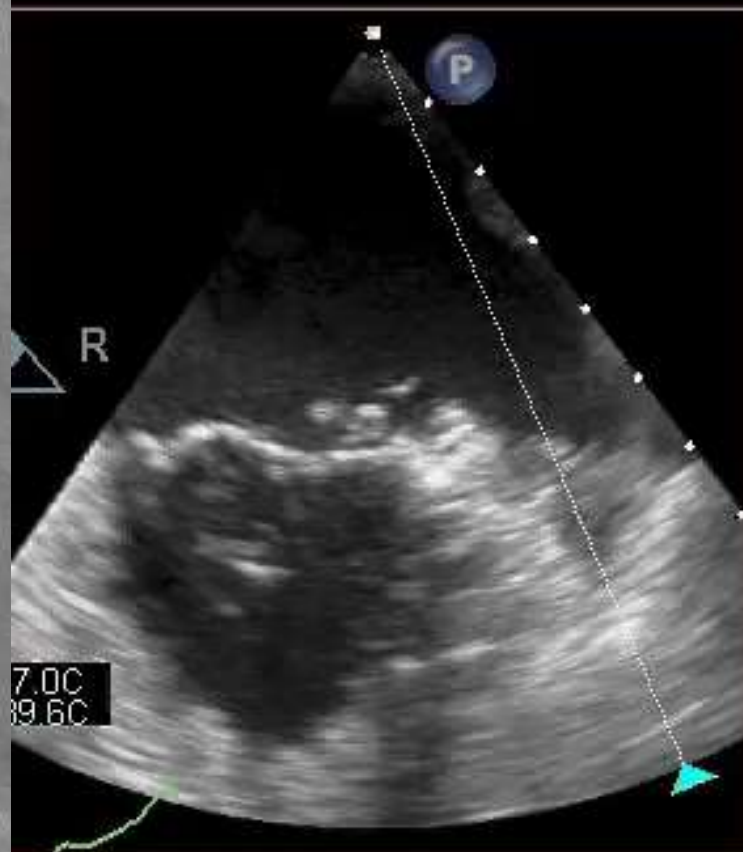
Echo

TIS0.2 MI 0.9

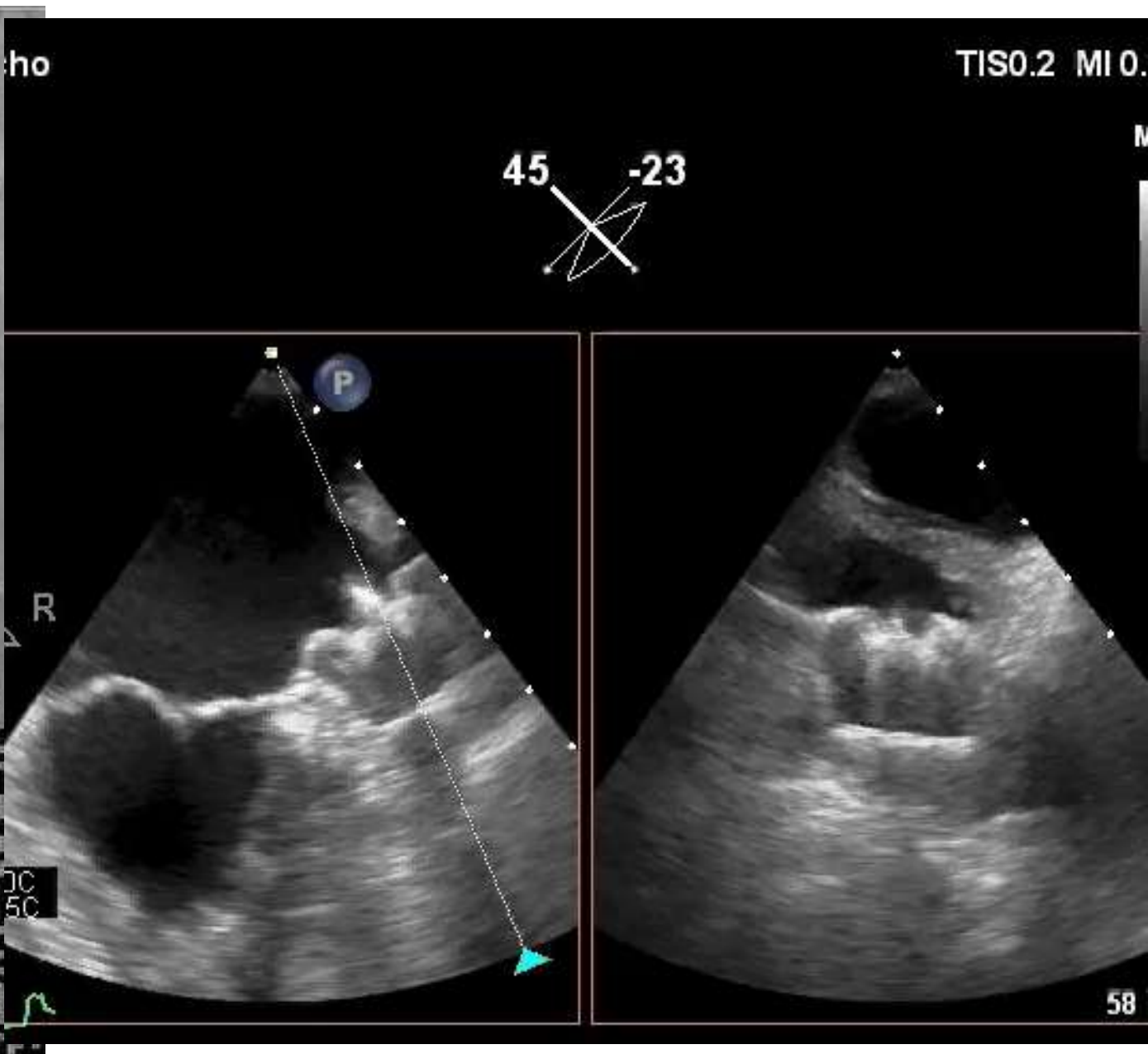
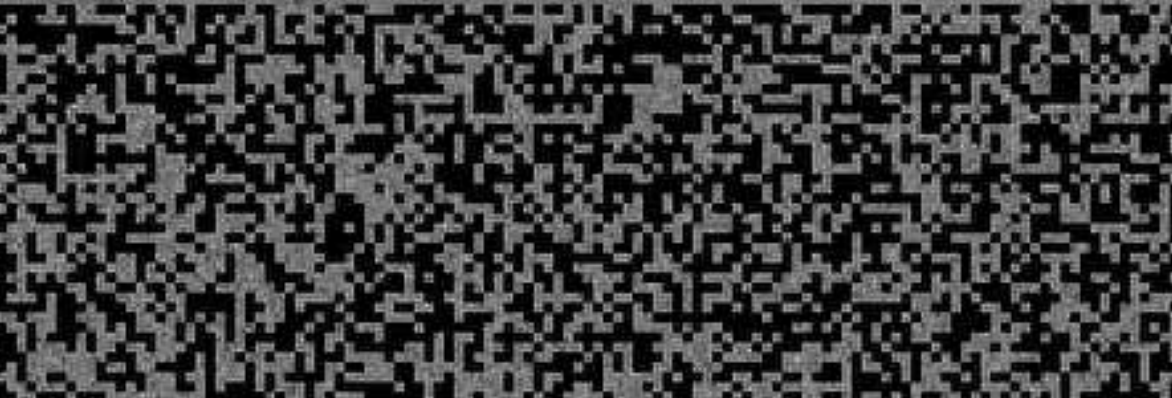
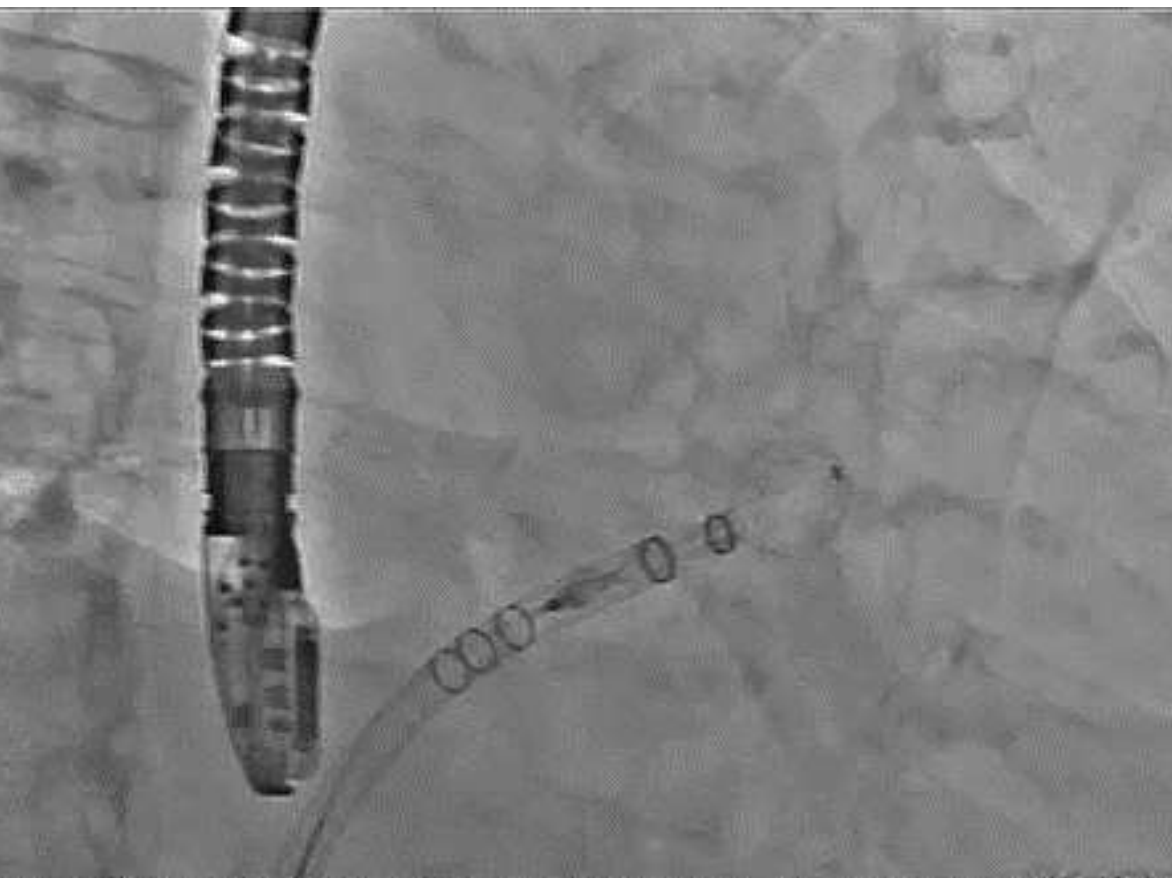
45 -23

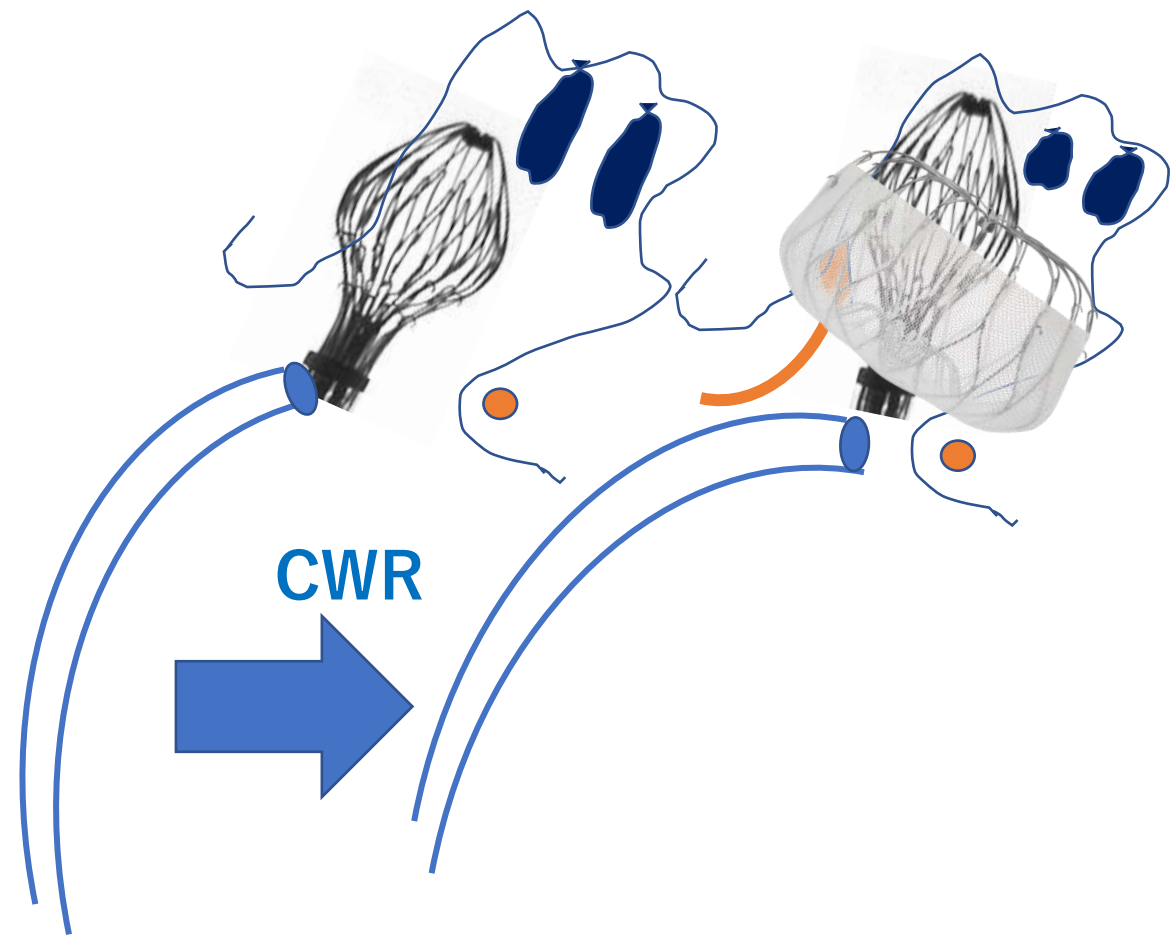
A diagram showing two intersecting lines representing angles. The top-left angle is labeled '45' and the top-right angle is labeled '-23'.

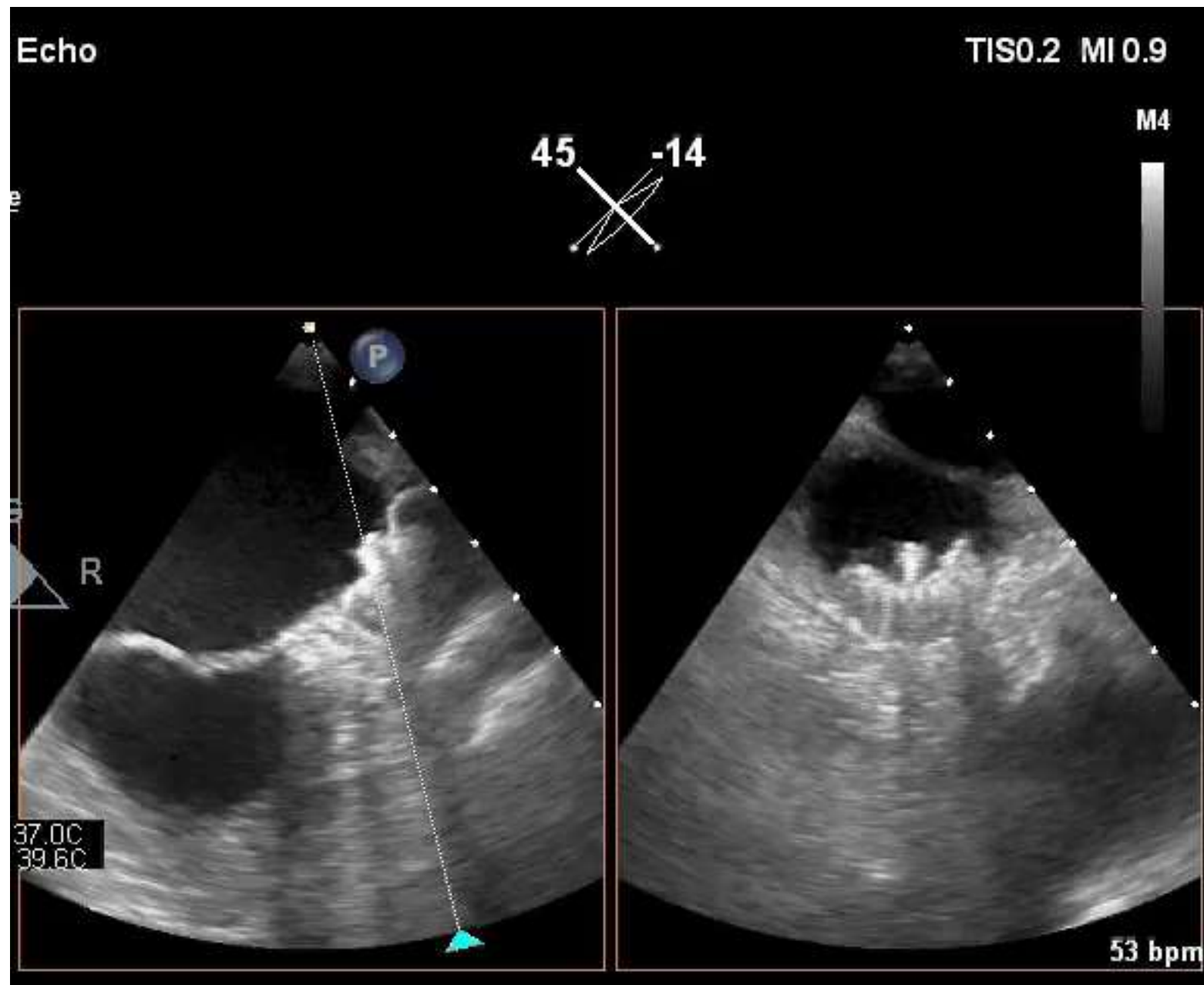
M4



45 b







- Advancing method
- Combination methods
- Jackknife-like movement
- ≥ 10 partial recap could be done

Take home messages

- ✓ We can perform controlled deployment
- ✓ Complete recap and reuse
- ✓ Larger ranges of LAA can be closed
- ✓ Better seal & healing would be expected

관심을 가져주셔서 감사합니다.