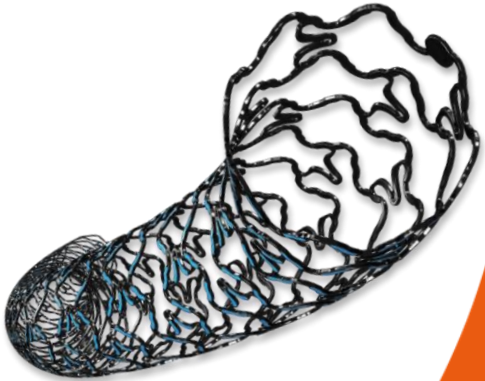


Advancing PCI outcome in diabetics with the innovative Cre8™ EVO DES

PCI with Cre8™ EVO in DM patient

- **Dott. Salvatore Colangelo**
 - Cardiovascular Intervention
 - San Giovanni Bosco Hospital
 - Turin - IT

CRE8™
EVO



Disclosure statement

Within the past 12 months, I or my spouse/partner have had a financial interest/arrangement or affiliation with the organization(s) listed below.

Affiliation/Financial Relationship

Spouse – Sales Country Manager

Company

CID

Male, 77 yo, HBP, NIDDM, smoker, previous TEA rICA

JUL 2019: low threshold effort angina -> ED

ECHO: EF 42%; diffuse hypokinesia; mild MR

ANGIO: LAD 80%, CTO LCx and RCA

Syntax score II = PCI 53,4% vs CABG 62,5%

Heart team evaluation: indication to PCI (age and anatomy)
and complete revascularization (2 CTOs)

Index procedure: **PCI/Cre8EVO 3.0/13 mm on pLAD**

Therapy at discharge: aspirin, clopidogrel, losartan 100 mg, atorvastatin 40 mg, metoprolol 25mg bid, slow release metformin 1 g bid

SYNTAX Score II

SYNTAX II

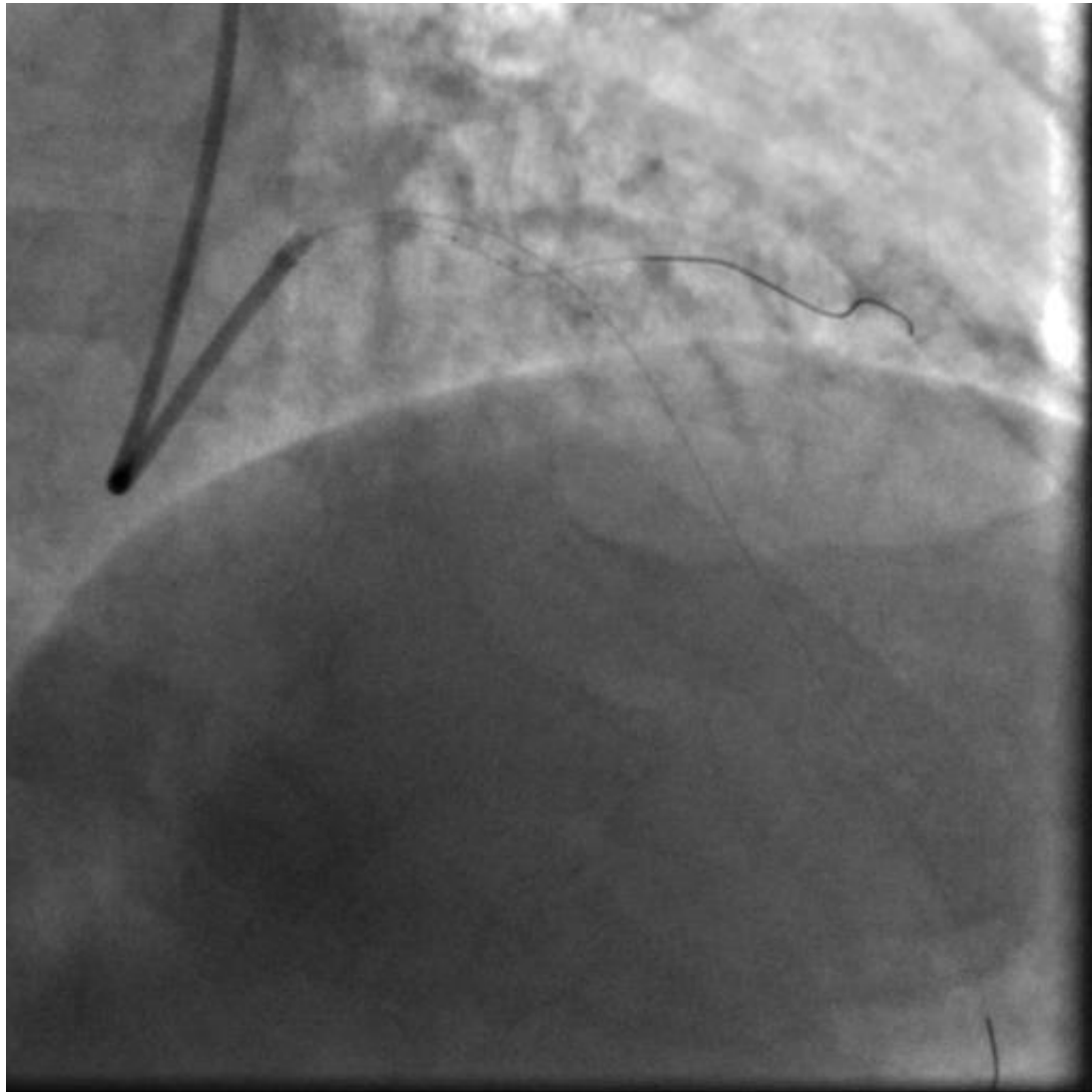
Decision making -between CABG and PCI- guided by the SYNTAX Score II to be endorsed by the Heart Team.

PCI
SYNTAX Score II: 58.3
PCI 4 Year Mortality: 53.4 %

CABG
SYNTAX Score II: 61.3
CABG 4 Year Mortality: 62.5 %

Treatment recommendation ⓘ: CABG or PCI

JUL 2019 (final result)





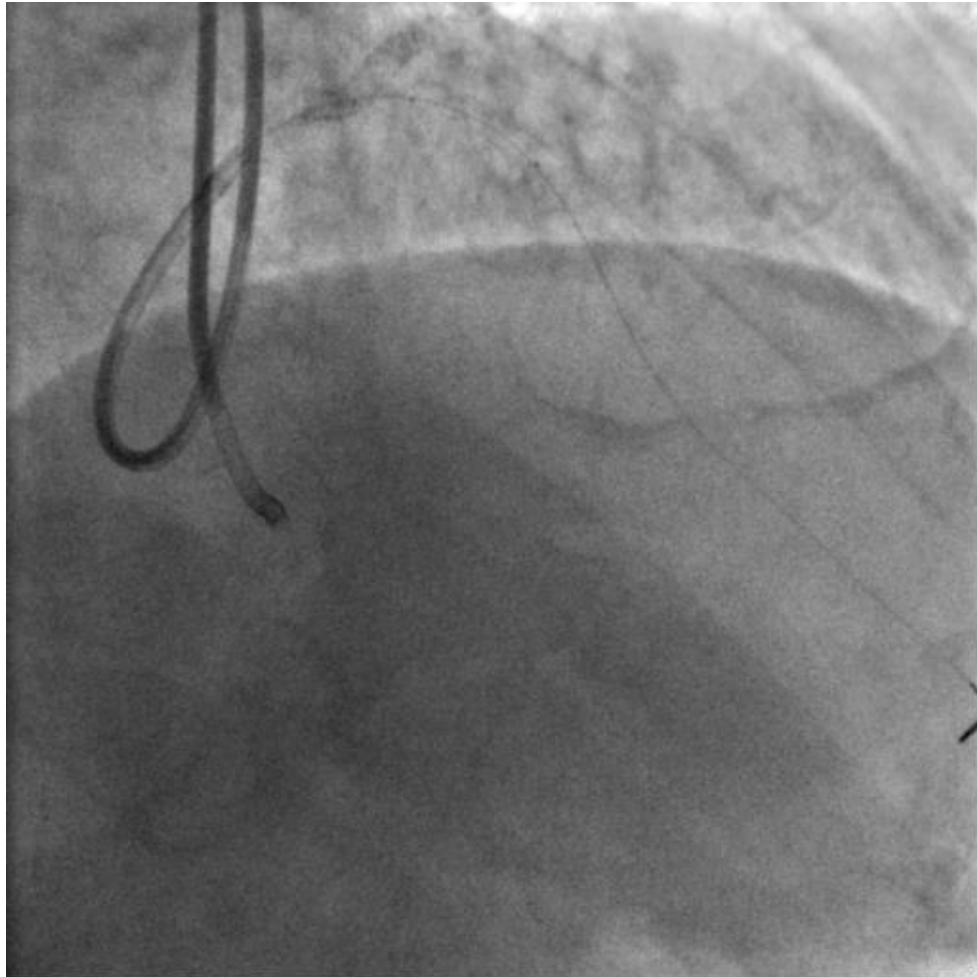
**Male, 77 yo, HBP, NIDDM, smoker, previous TEA right ICA,
previous PCI/AES on LAD**

DEC 2020: admission for elective procedure

CTO-PCI LCx -> PCI/Cre8EVO 2.5/26 mm + 3.0/9 mm

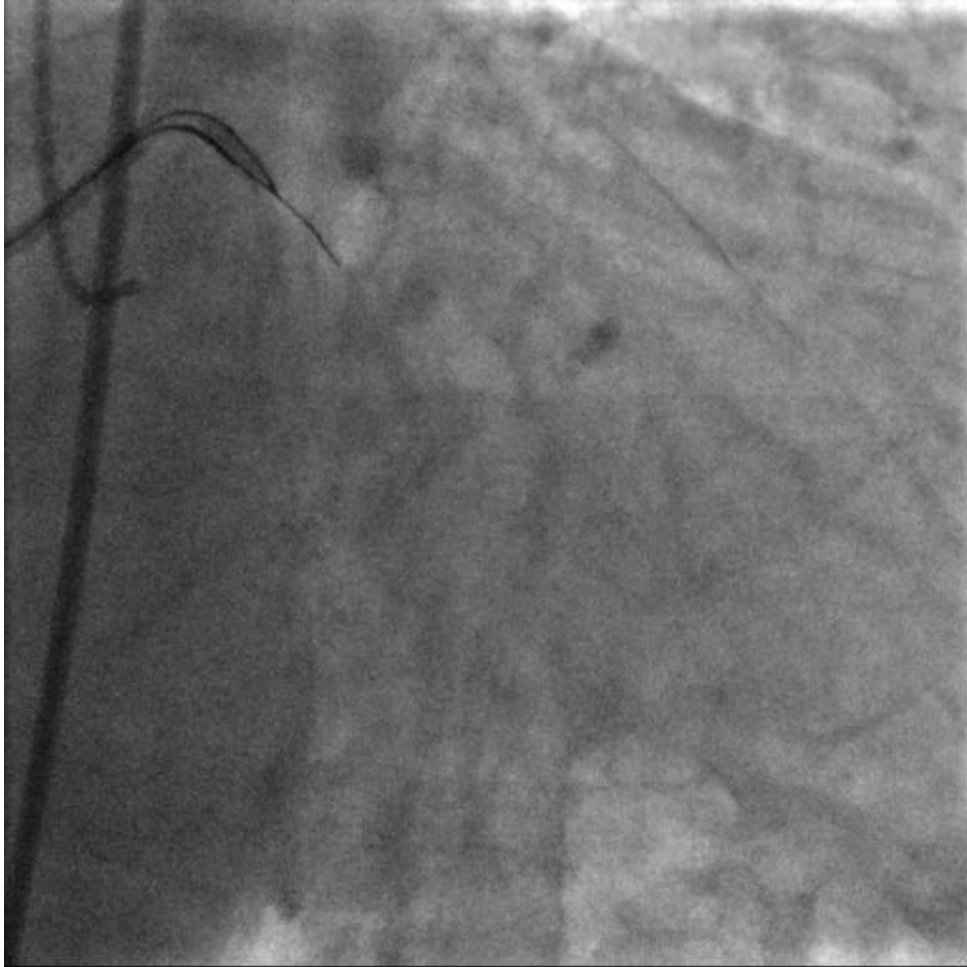
Therapy at the admission: aspirin, losartan 100 mg, atorvastatin
40 mg, metoprolol 25mg bid, slow release metformin 1 g bid

DEC 2020

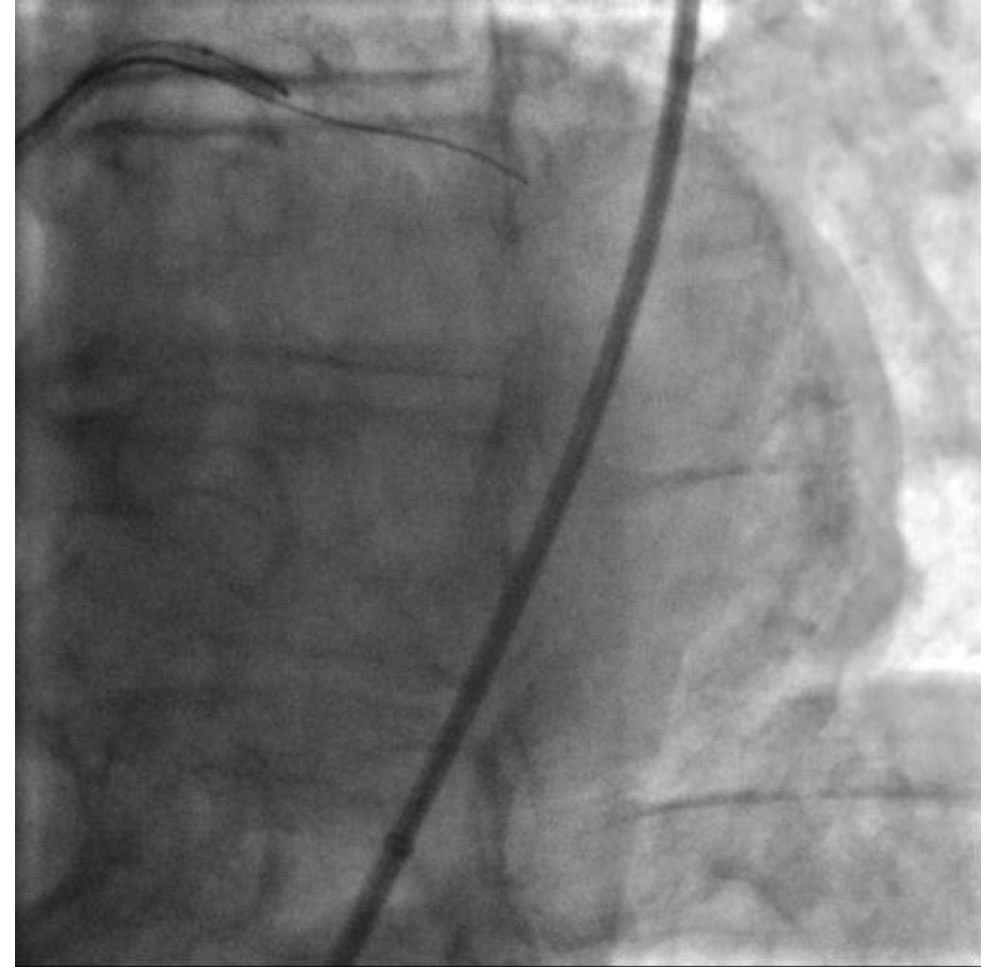


**Optimal result at 17 months from stenting with Cre8EVO on pLAD +
“double injection” for OM collaterals**

DEC 2020

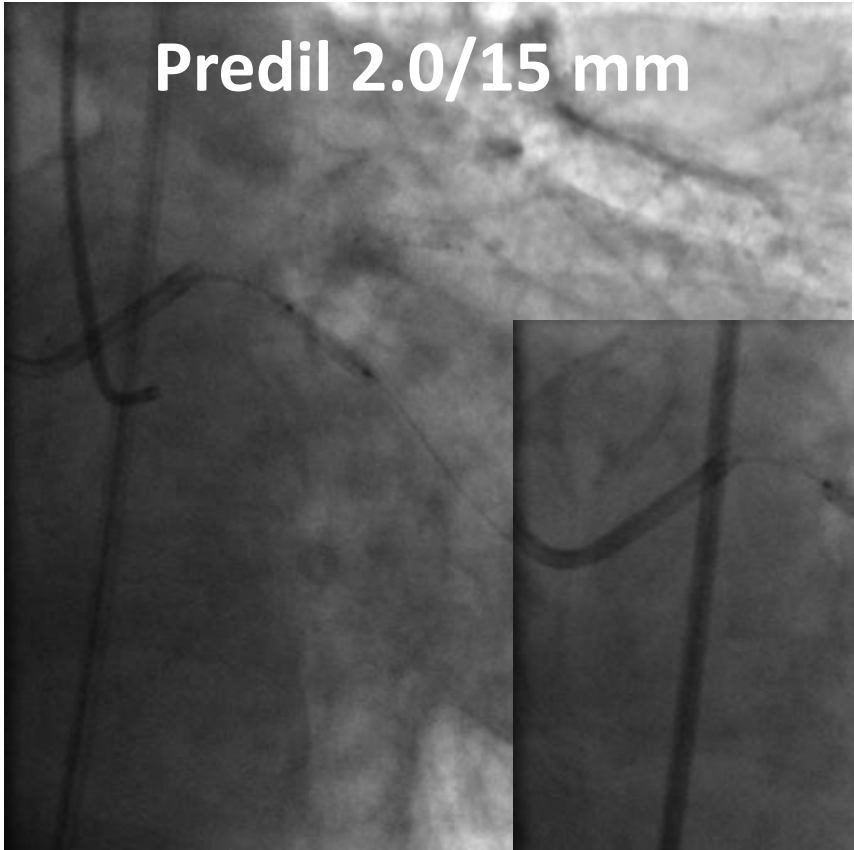


**“real-time” crossing
Gaia2 on the OM**

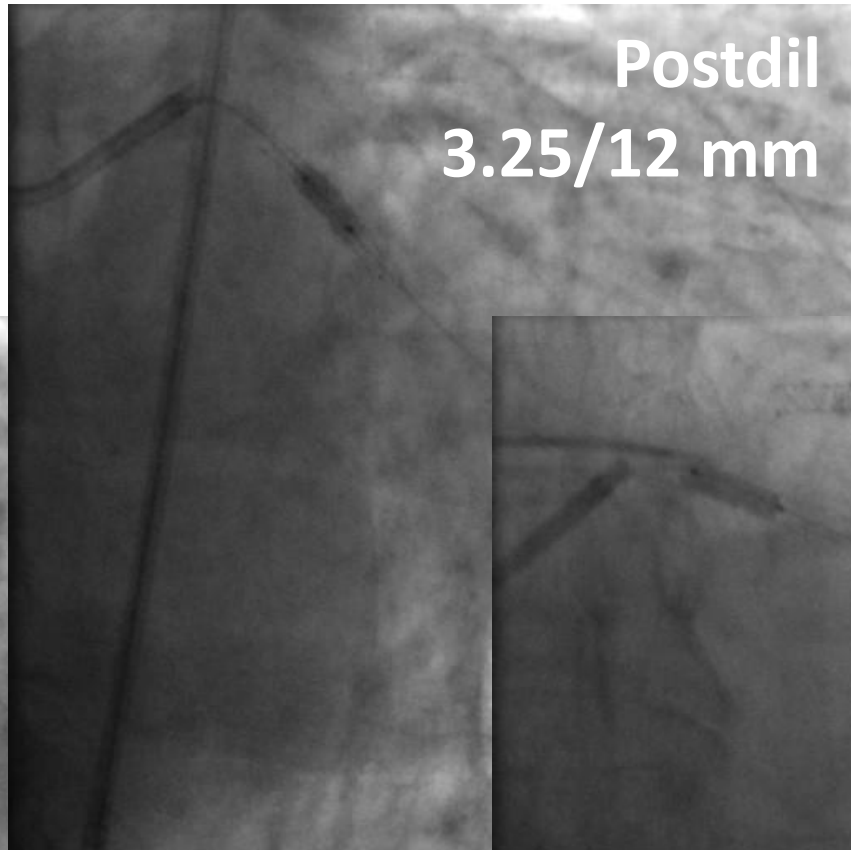


Controlateral “check”

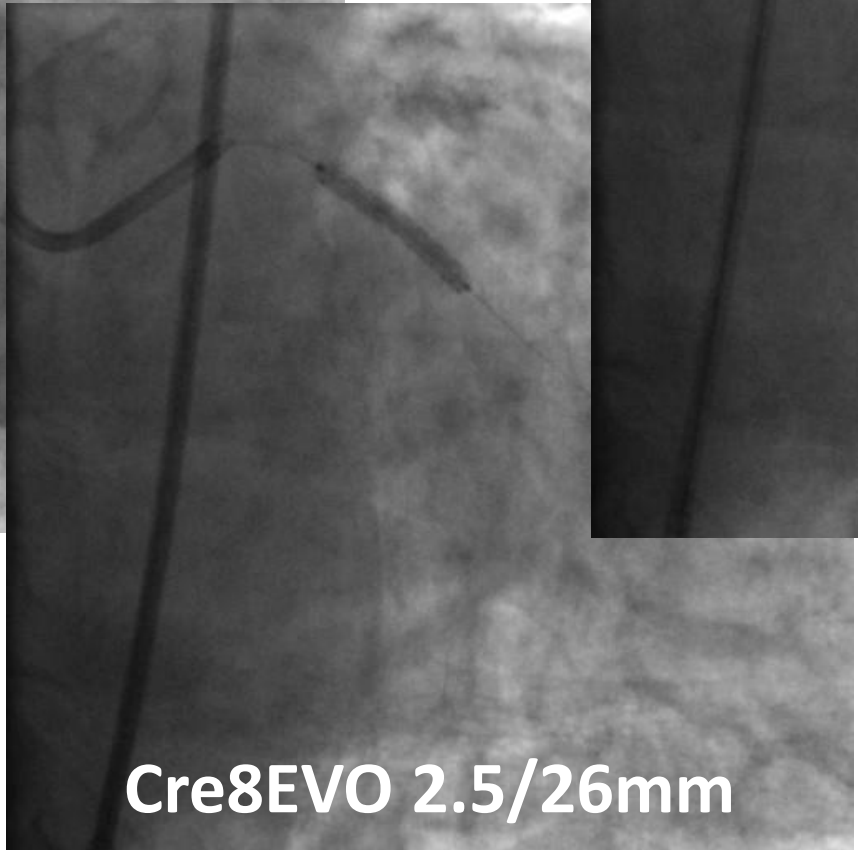
DEC 2020



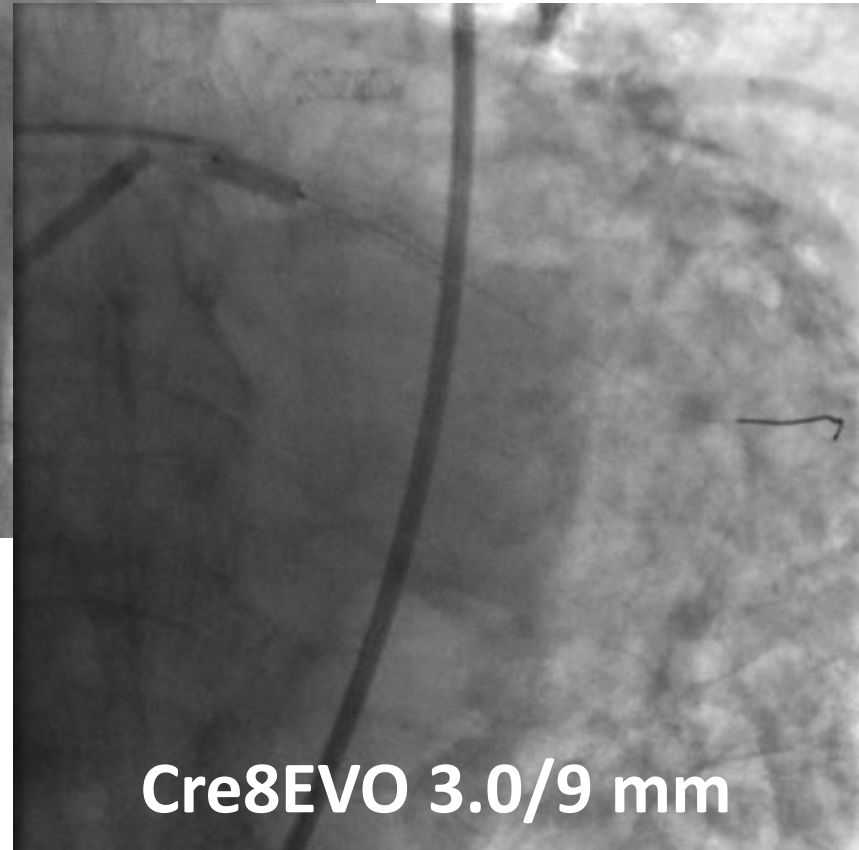
Predil 2.0/15 mm



Postdil
3.25/12 mm

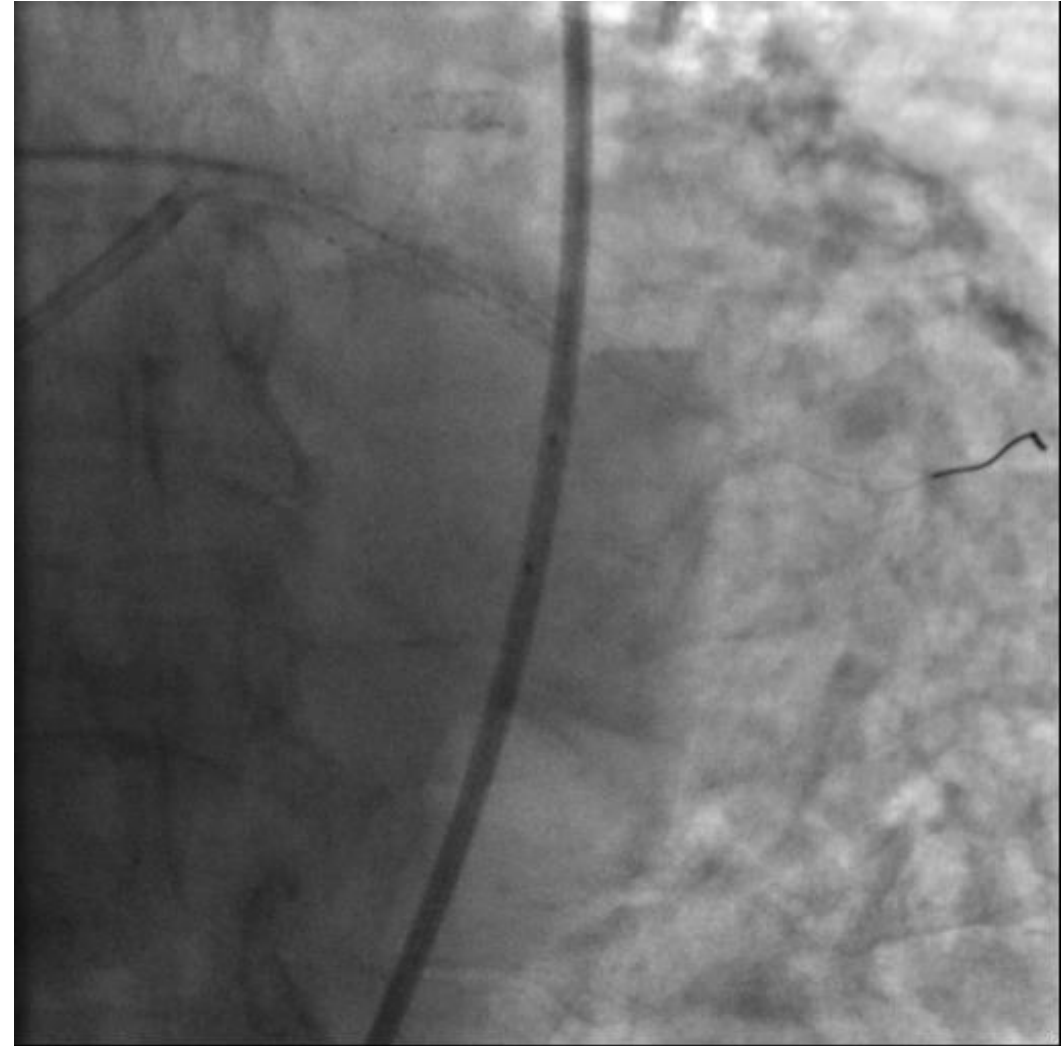


Cre8EVO 2.5/26mm

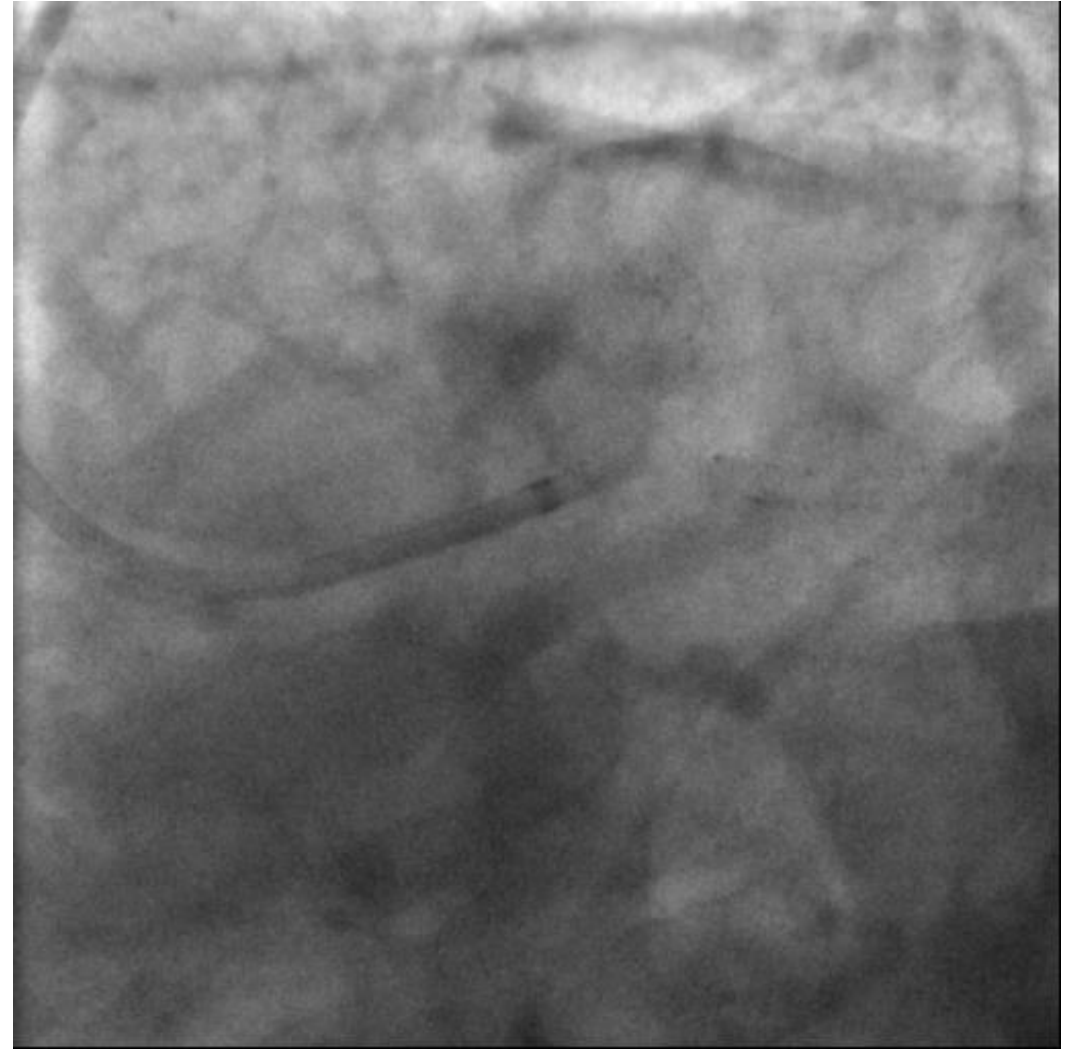


Cre8EVO 3.0/9 mm

Final result



Final result

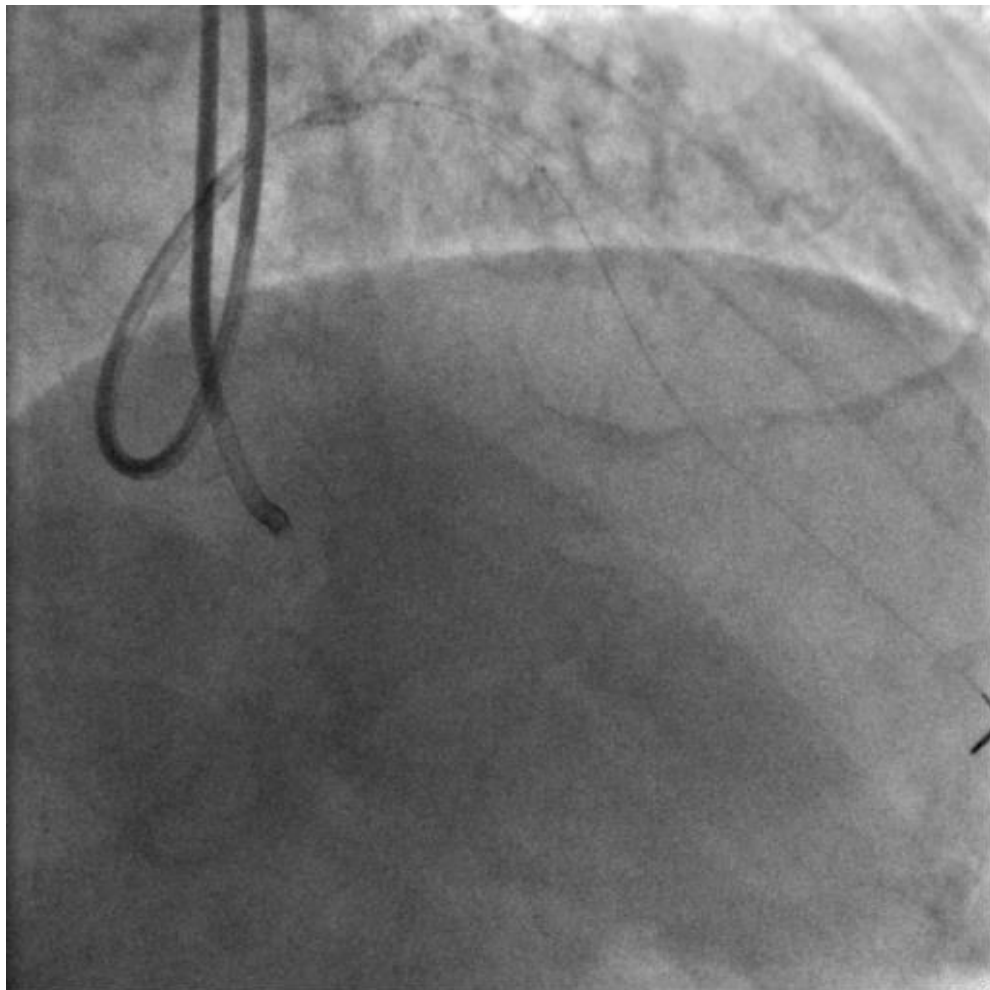


Male, 77 yo, HBP, NIDDM, smoker, previous TEA right ICA
previous PCI/AES on pLAD
previous CTO/PCI on Lcx

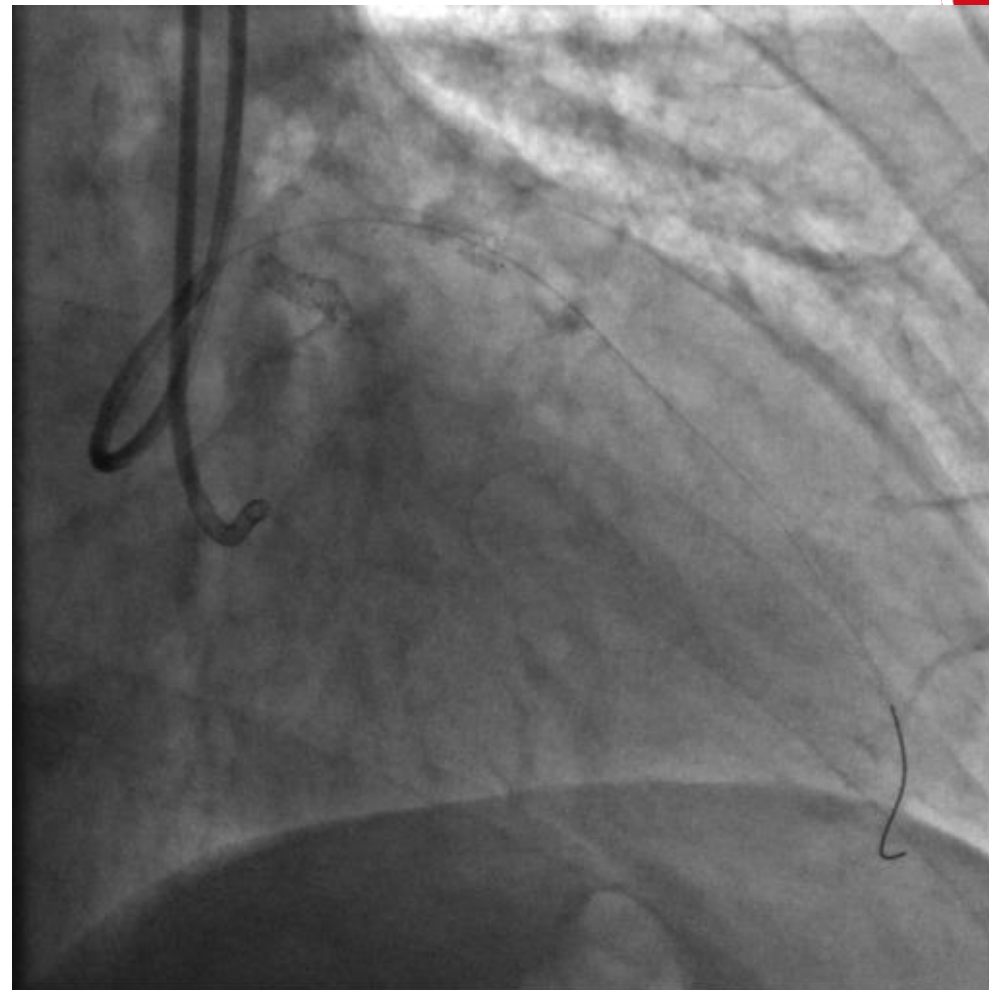
SEP 2021: elective admission for elective **RCA CTO-PCI**

PCI/Cre8EVO 2.5/26 mm + 2.5/33 mm + 3.0/33 mm + 3.5/26 mm

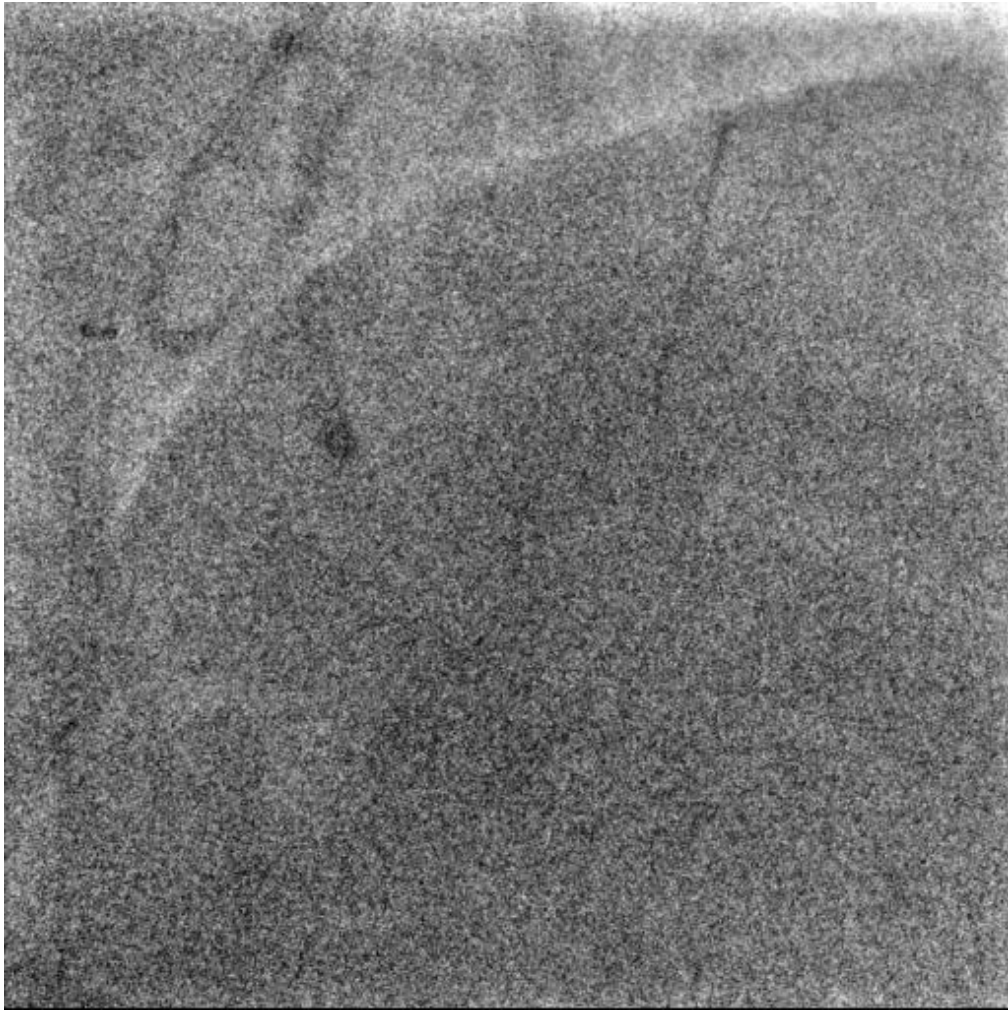
Therapy at the admission: aspirin, clopidogrel, losartan 100 mg,
atorvastatin 40 mg, metoprolol 25mg bid, slow release metformin 1 g
bid



Optimal result at 26 months from stenting with Cre8EVO of pLAD



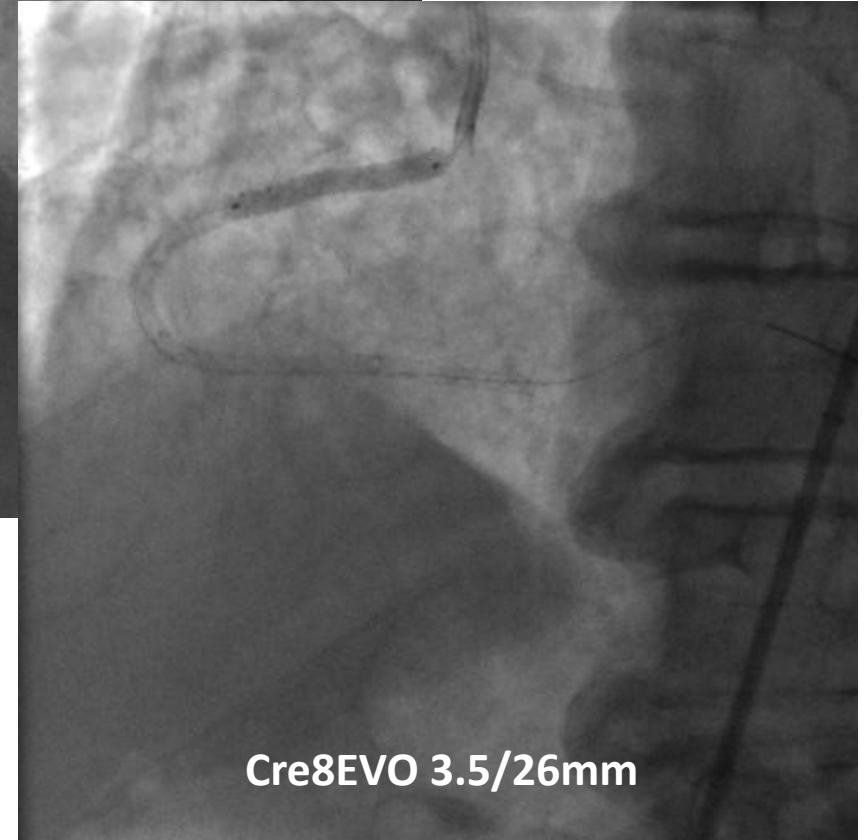
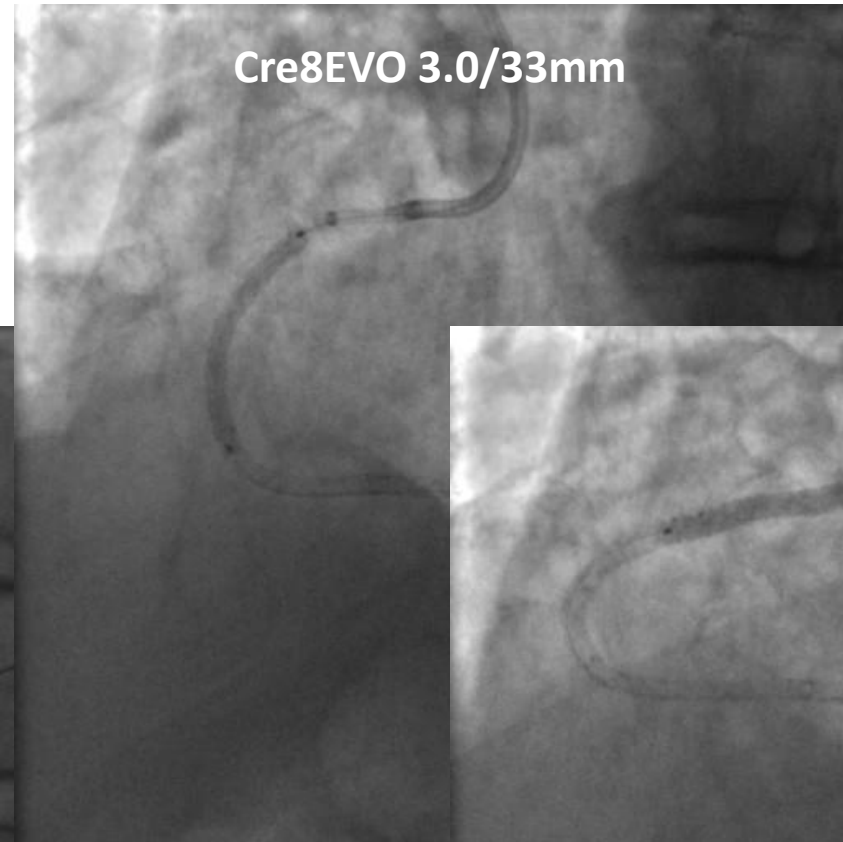
Optimal result at 9 months from stenting with Cre8EVO on pLCx



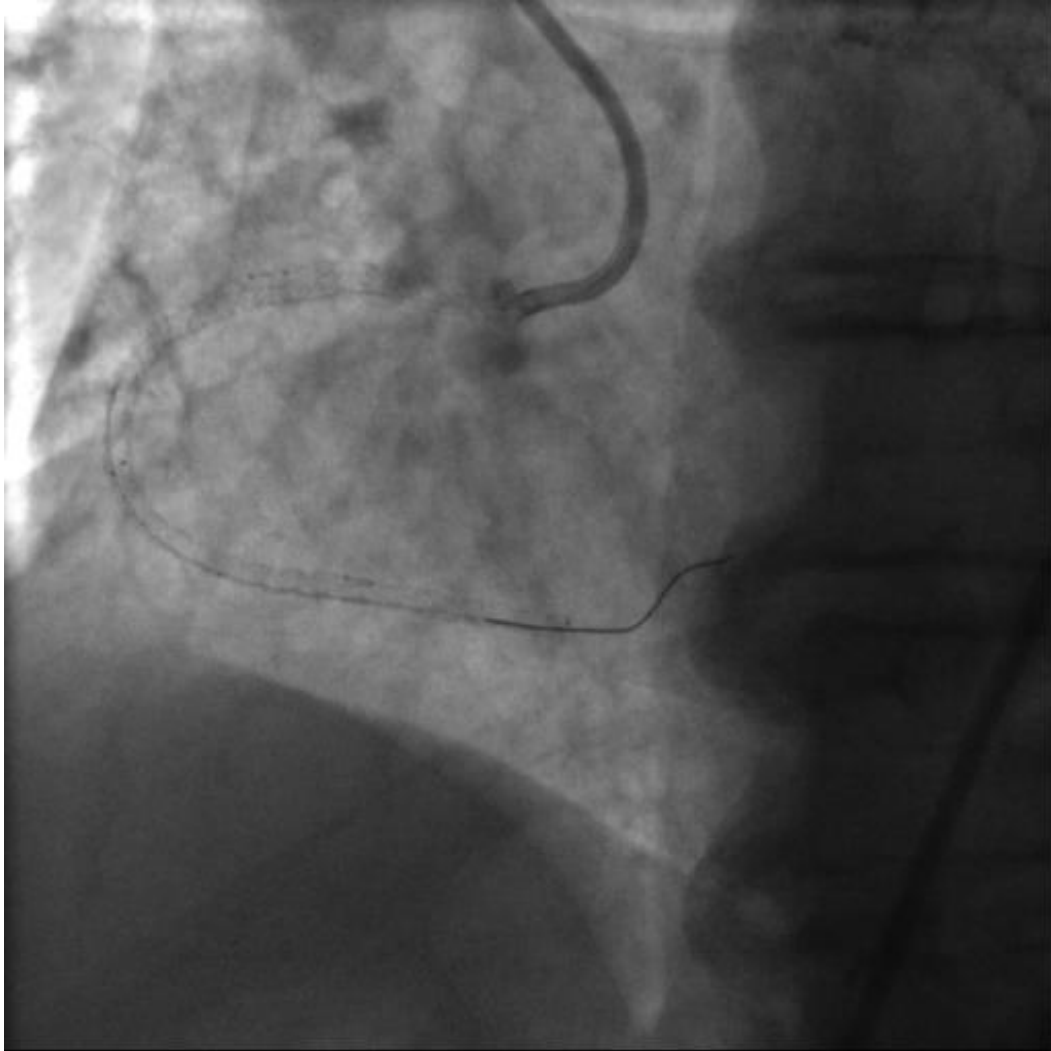
“real-time crossing” of
SUOH03 from retrograde
septal collaterals



“real-time crossing” of
antegrade Fielder XTA
on PDA



Final result



Take home messages

Diabetic patients are “**challenging patients**” and it’s very important to use very effective therapeutical strategies on them

Our experiences MUST BE “**evolving**” with the aim of the best long term results for the worst scenarios we have

Considering the diabetic condition, these patients have “**the most to earn**” from effective treatment and good long term result as compared to more stable patients



Thank you for the attention