

Xience Skypoint in Bifurcation/Complex lesions

Eun Ho Choo

Cardio-Cerebro-Vascular Hospital

Seoul St. Mary's Hospital

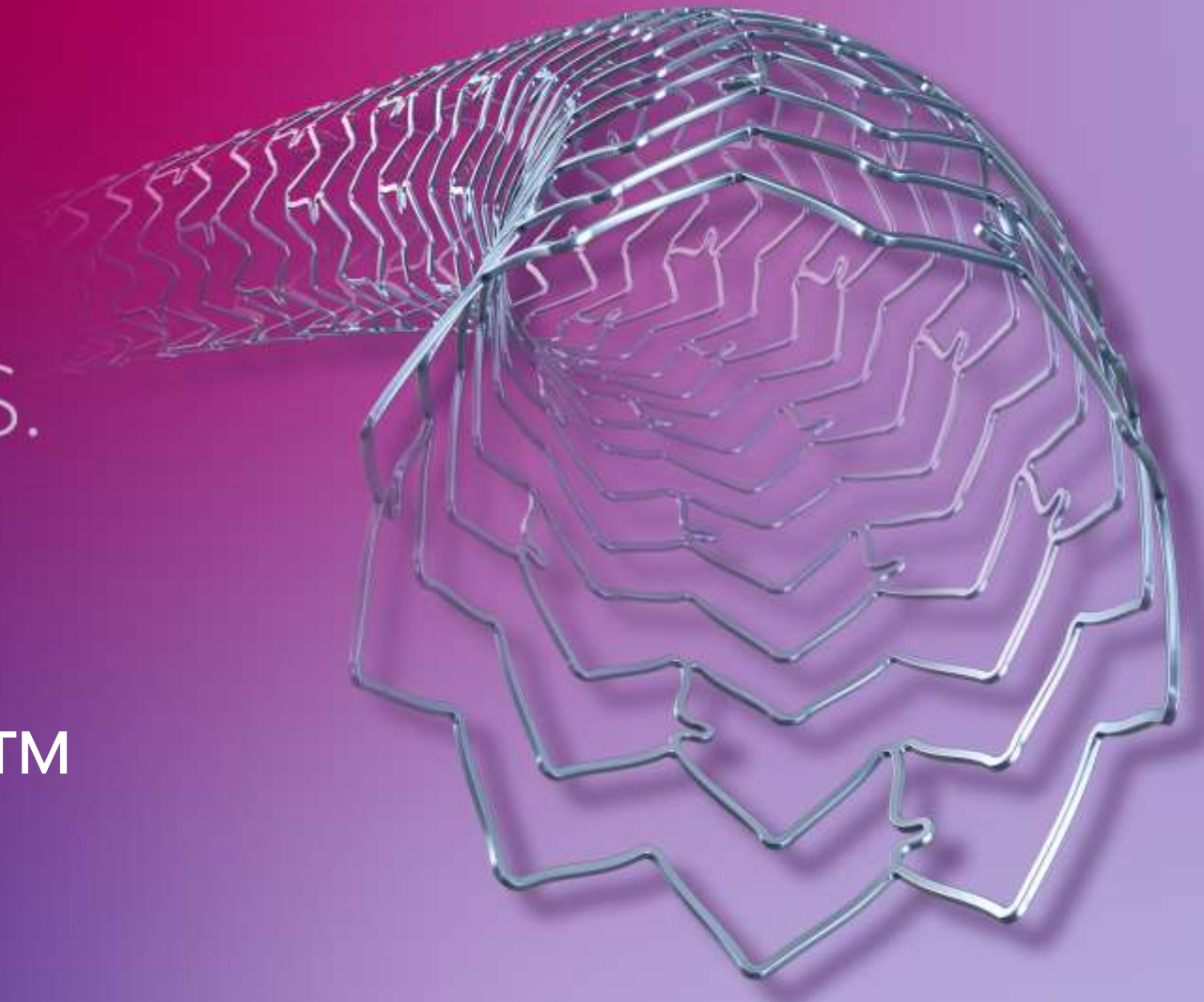
The Catholic University of Korea



Xience Skypoint™
Drug-Eluting Stent System

EXPANDED RANGE.
TRUSTED OUTCOMES.

XIENCE Skypoint™



Reach for **XIENCE™**

Information contained herein for DISTRIBUTION outside the U.S. ONLY. Check the regulatory status of the device in areas where CE marking is not the regulation in force.

©2022 Abbott. All rights reserved. MAT-2208315 v1.0









Abbott



THE CATHOLIC UNIVERSITY OF KOREA
SEOUL ST. MARY'S HOSPITAL

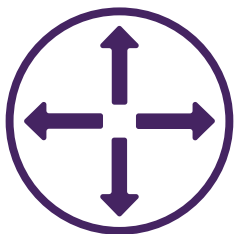
XIENCE™ Design: Continuously improving¹

	2010	2012	2013	2015	2018	2022
Catheter Technology	 XIENCE V™ MULTI-LINK VISION™	 XIENCE PRIME™	 XIENCE XPEDITION™	 XIENCE ALPINE™	 XIENCE SIERRA™ Improved Crossability ¹	 XIENCE Skypoint™ Slimmer Catheter Profile ³
Balloon	Single Layer Balloon	Single Layer Balloon	Thin, Multilayer Balloon	Thin, Multilayer Balloon	Ultra Thin Single Layer Balloon Reduced Profile ¹	Ultra Thin Single Layer Balloon
Stent Design and Material	MULTI-LINK VISION CoCr	MULTI-LINK 8 CoCr	MULTI-LINK 8 CoCr	MULTI-LINK 8 CoCr	Enhanced Stent Design Smaller Crimped Profile and Larger post-dil expansion ² CoCr Stent	Larger Post-Dilation Expansion – 5.75 mm ⁴ CoCr Stent
Drug/Dosage²	Everolimus 100 µg/cm ²	→				
Coating	PVDF-HFP Fluoropolymer	→				

Information contained herein for DISTRIBUTION outside the U.S. ONLY. Check the regulatory status of the device in areas where CE marking is not the regulation in force.

©2021 Abbott. All rights reserved. MAT-2106626 v2.0

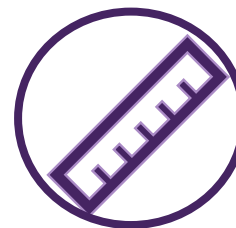
XIENCE Skypoint™ Stent is the latest generation XIENCE™ Stent and has some additional innovation enhancements from XIENCE Sierra™ Stent



**BETTER
EXPANSION**



**EXCELLENT
DELIVERABILITY**

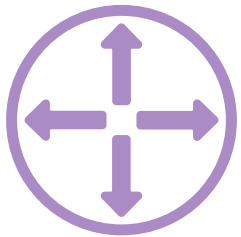


**NEW
48 MM DESIGN**



**MORE VISIBLE
CATHETER HUB**

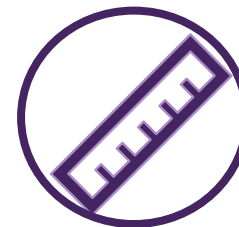
XIENCE Skypoint™ Stent is the latest generation XIENCE™ Stent and has some additional innovation enhancements from XIENCE Sierra™ Stent



**BETTER
EXPANSION**



**EXCELLENT
DELIVERABILITY**



**NEW
48 MM DESIGN**



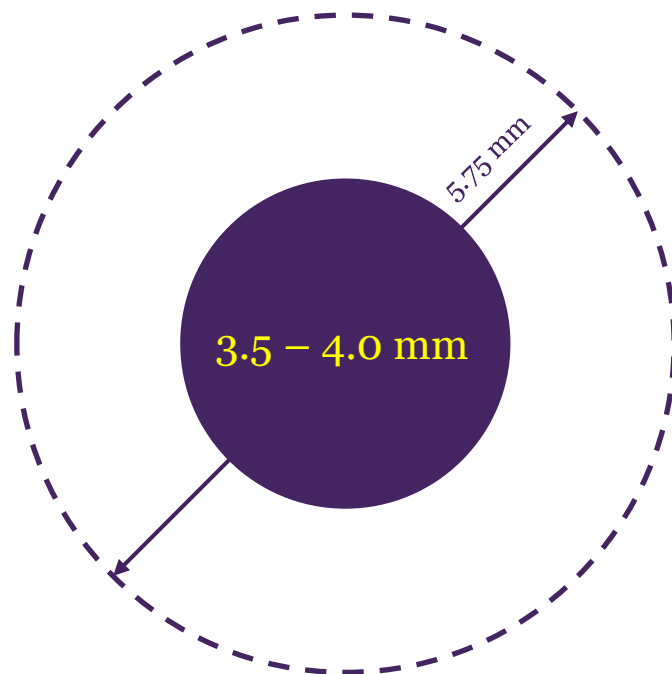
**MORE VISIBLE
CATHETER HUB**

XIENCE Skypoint™ Stent has better maximum expansion up to 5.75 mm helping treat patients with larger vessels



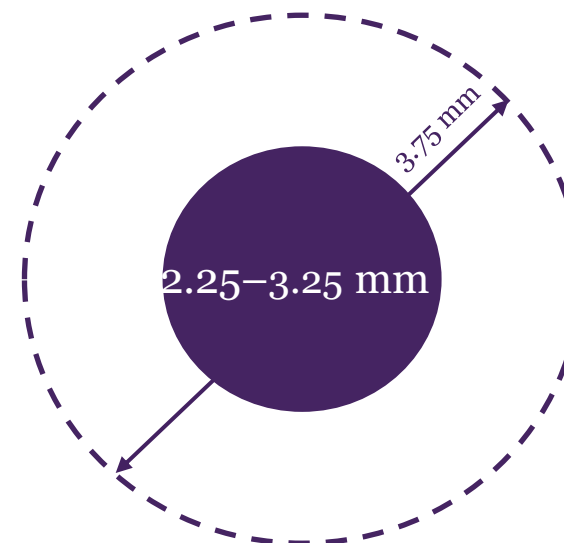
**BETTER
EXPANSION**

MEDIUM STENT
EXPANDS TO 5.75 MM



Medium Stent Design

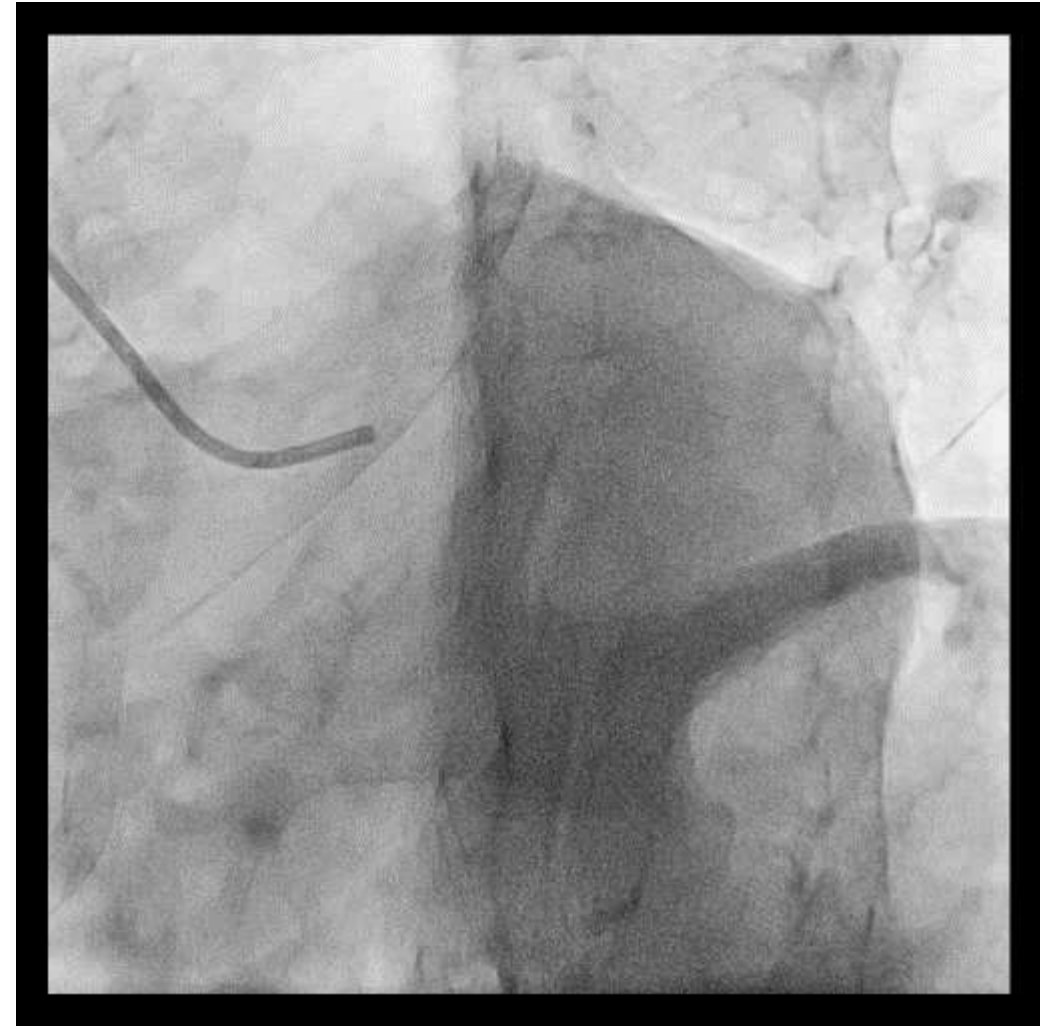
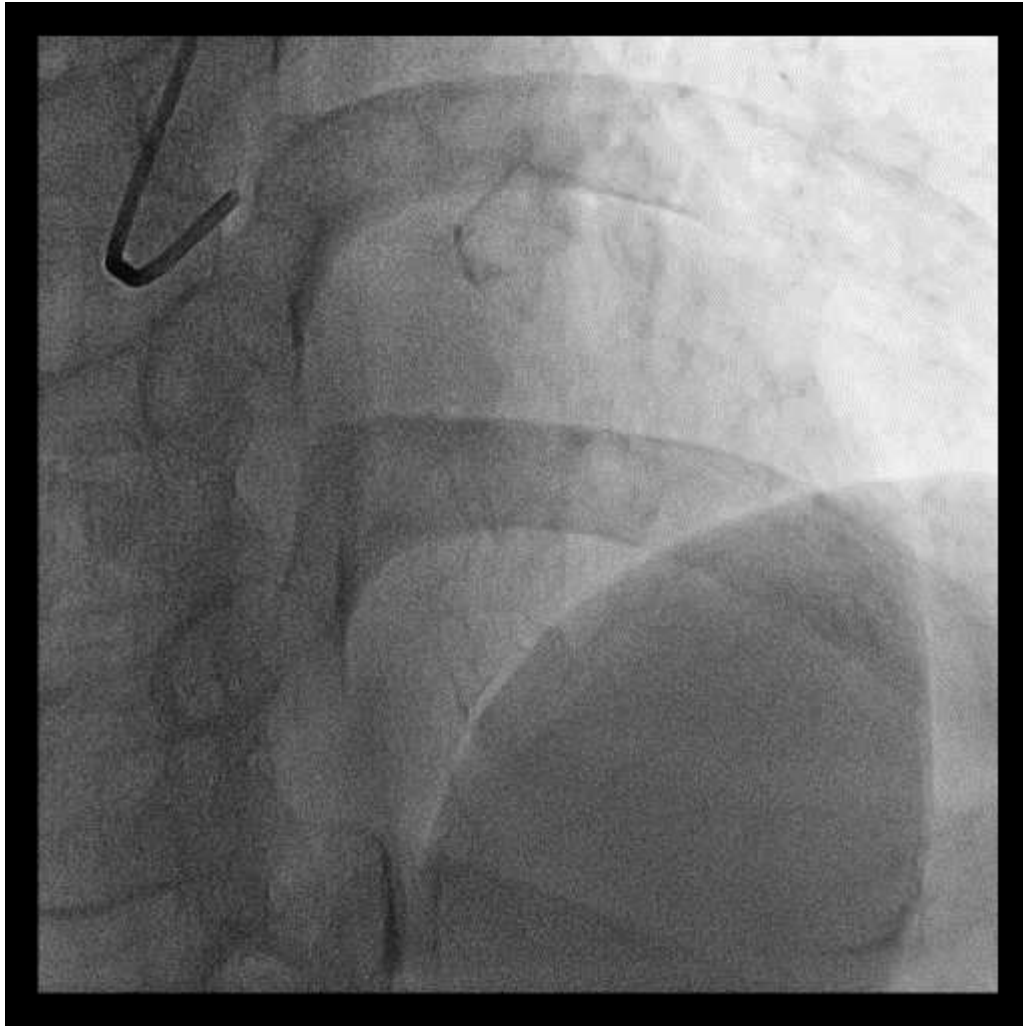
SMALL STENT
EXPANDS TO 3.75 MM

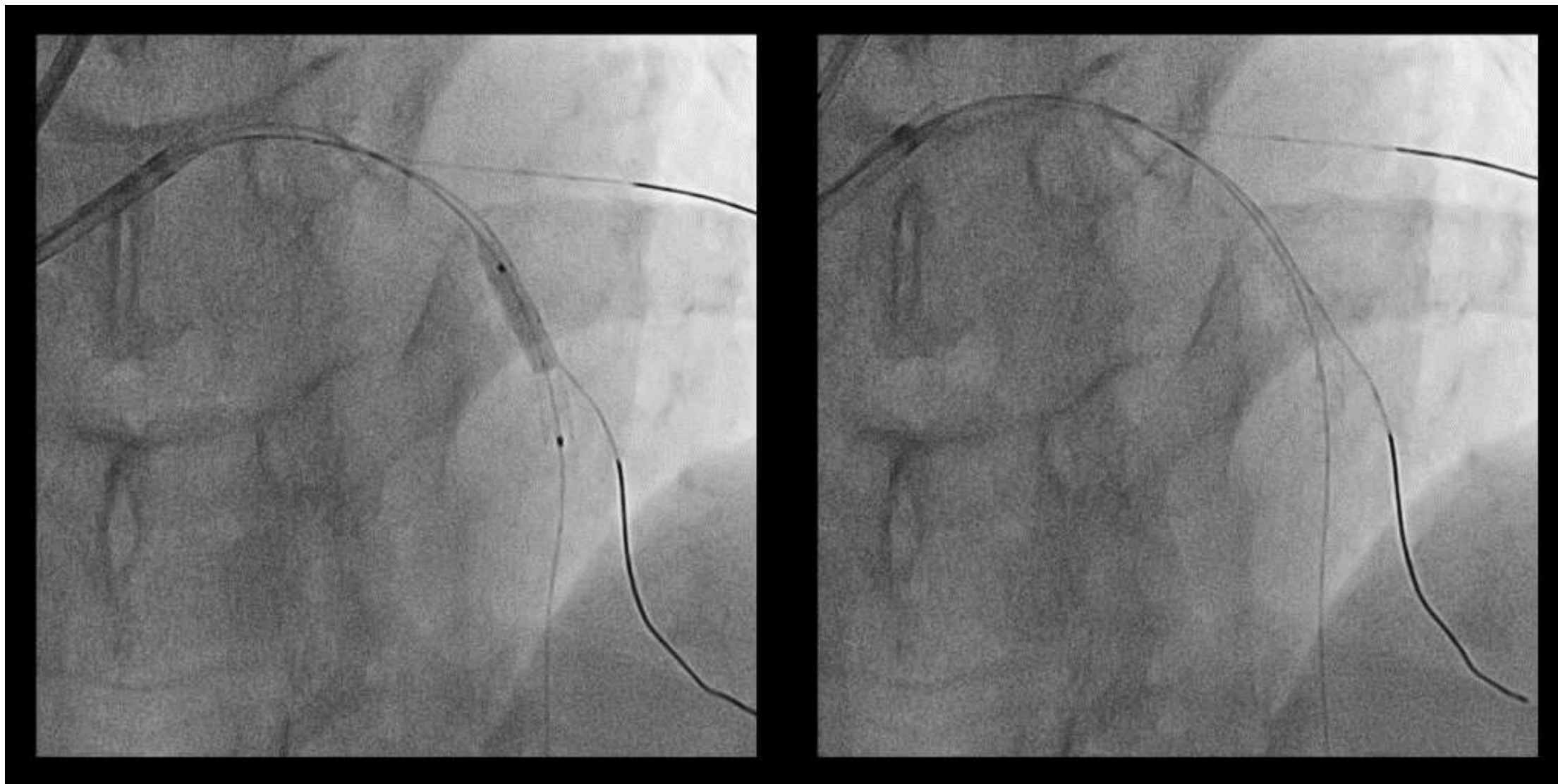


Small Stent Design

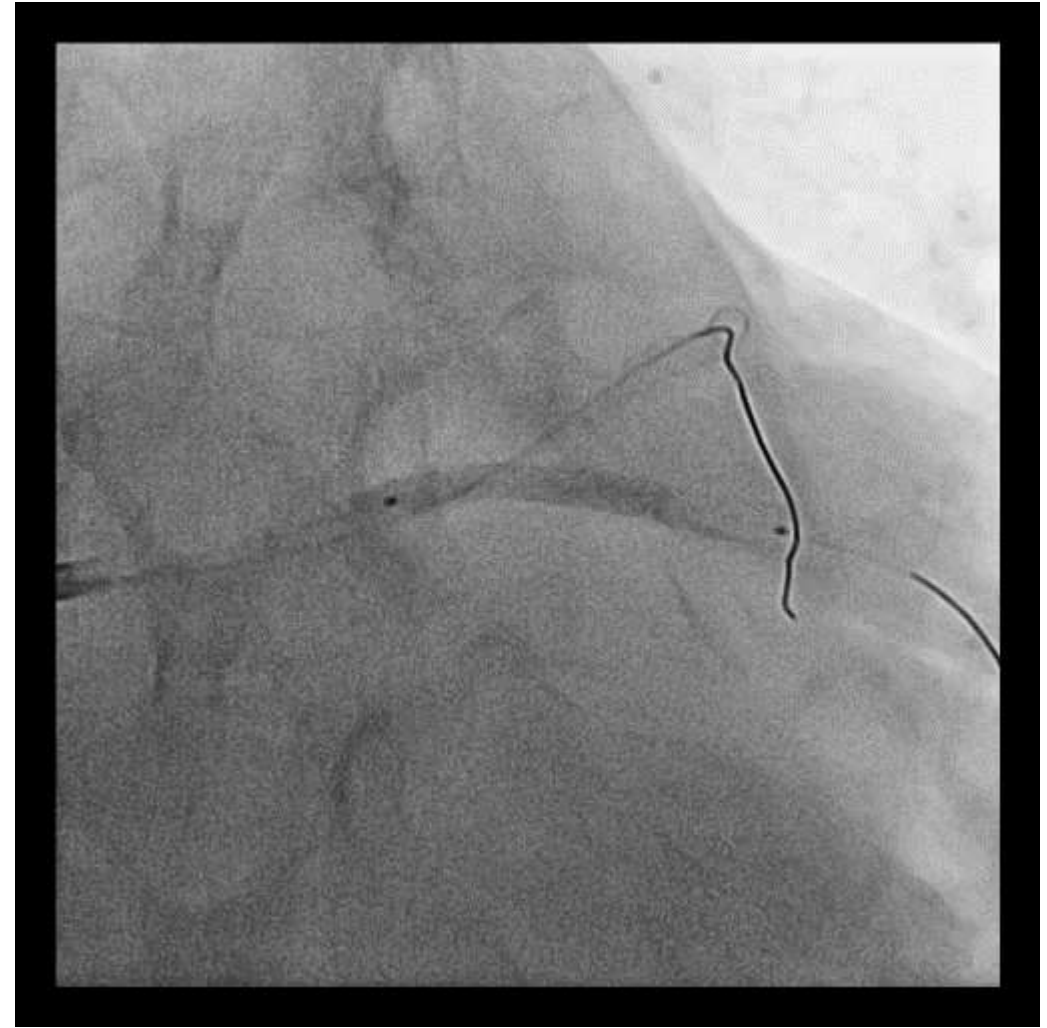
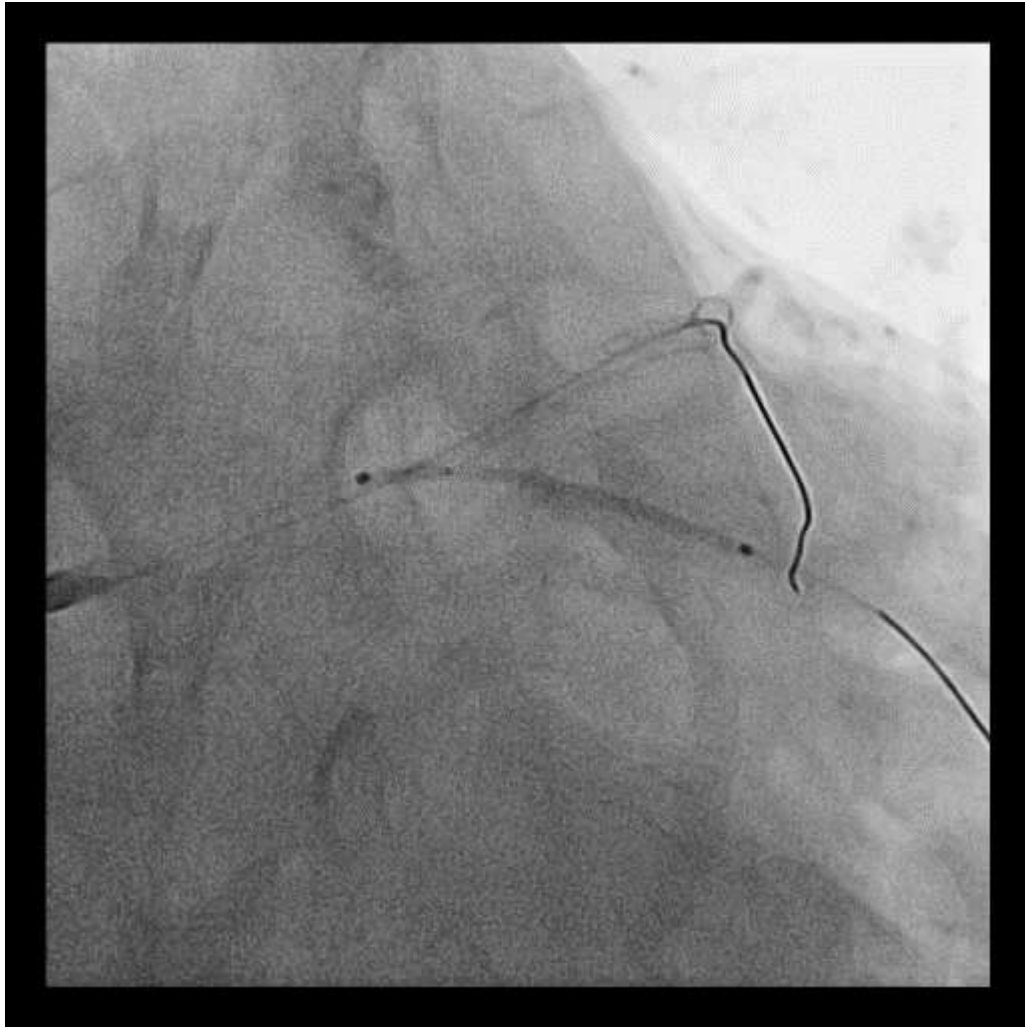
Data on file at Abbott.

61/F, Unstable angina





Xience skypoint 2.75 x 15

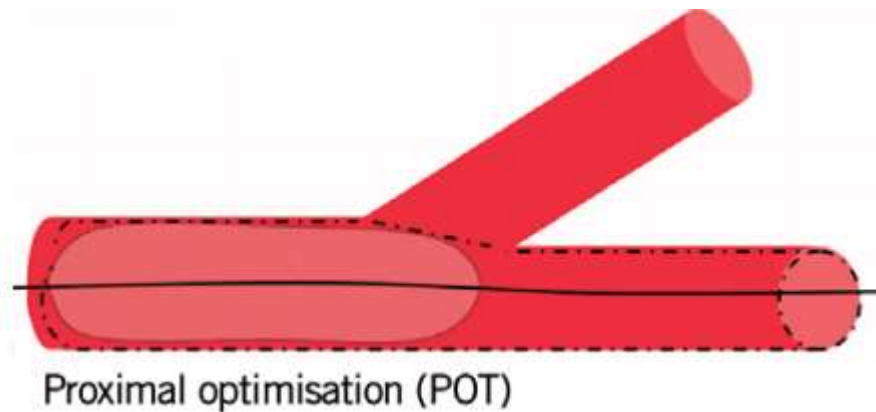
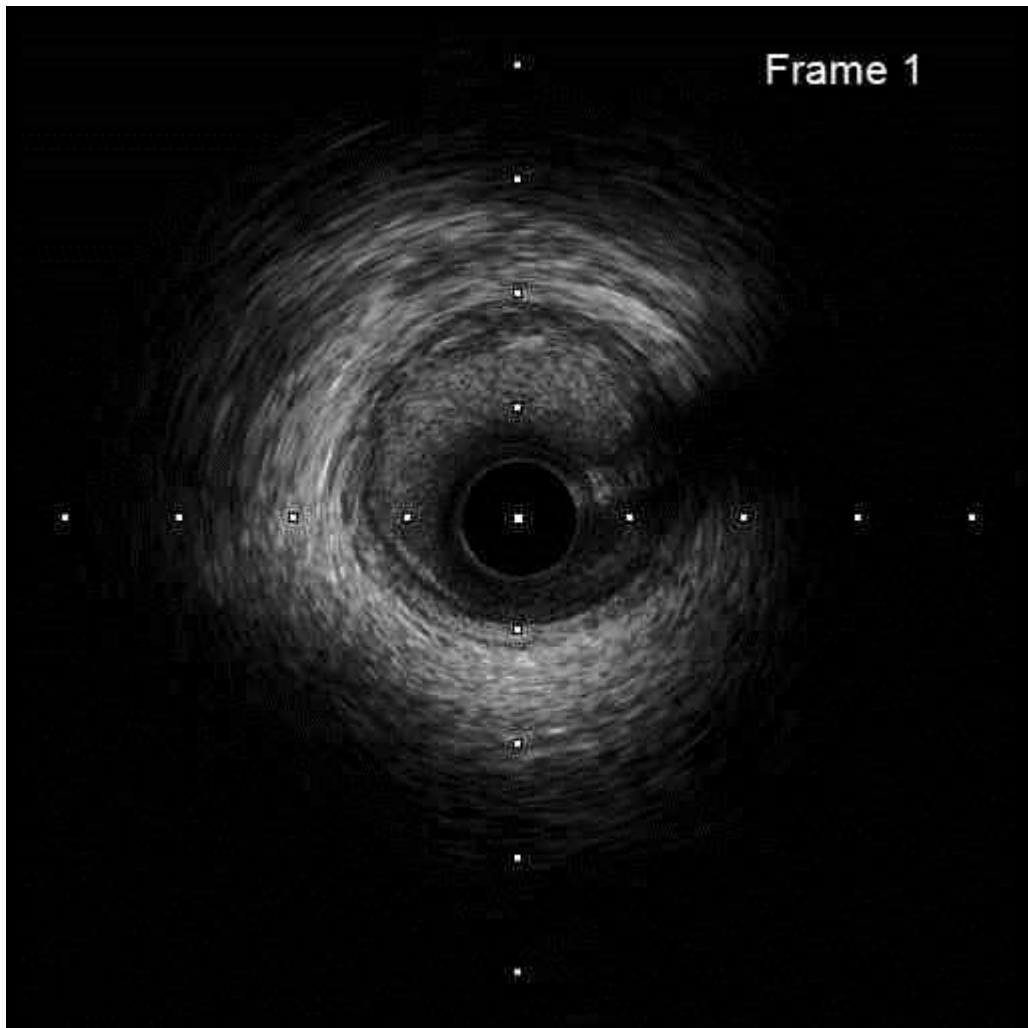


Xience skypoint 2.75 x 28

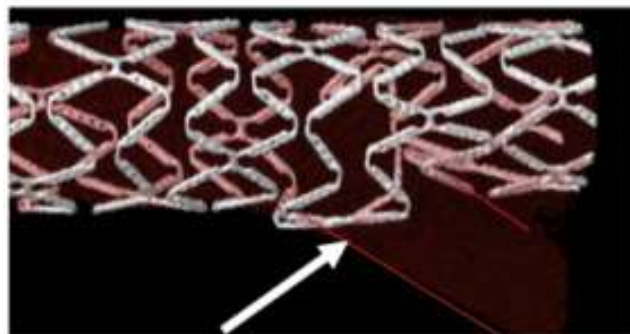
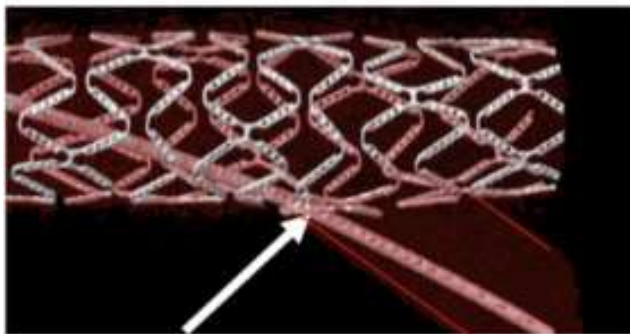


Selecthru NC 3.5x6

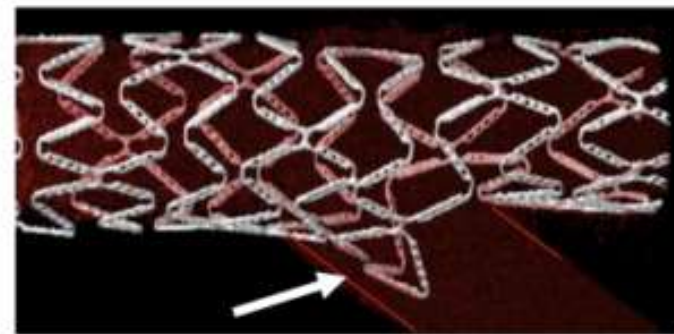
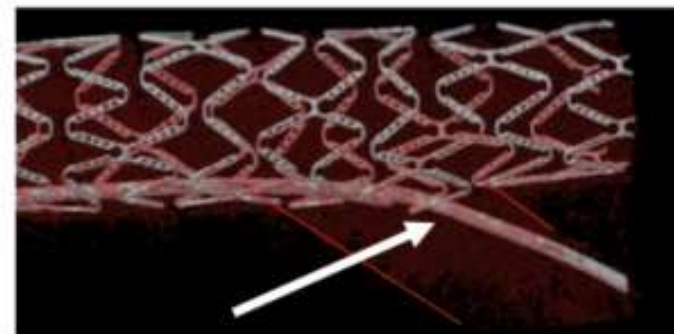


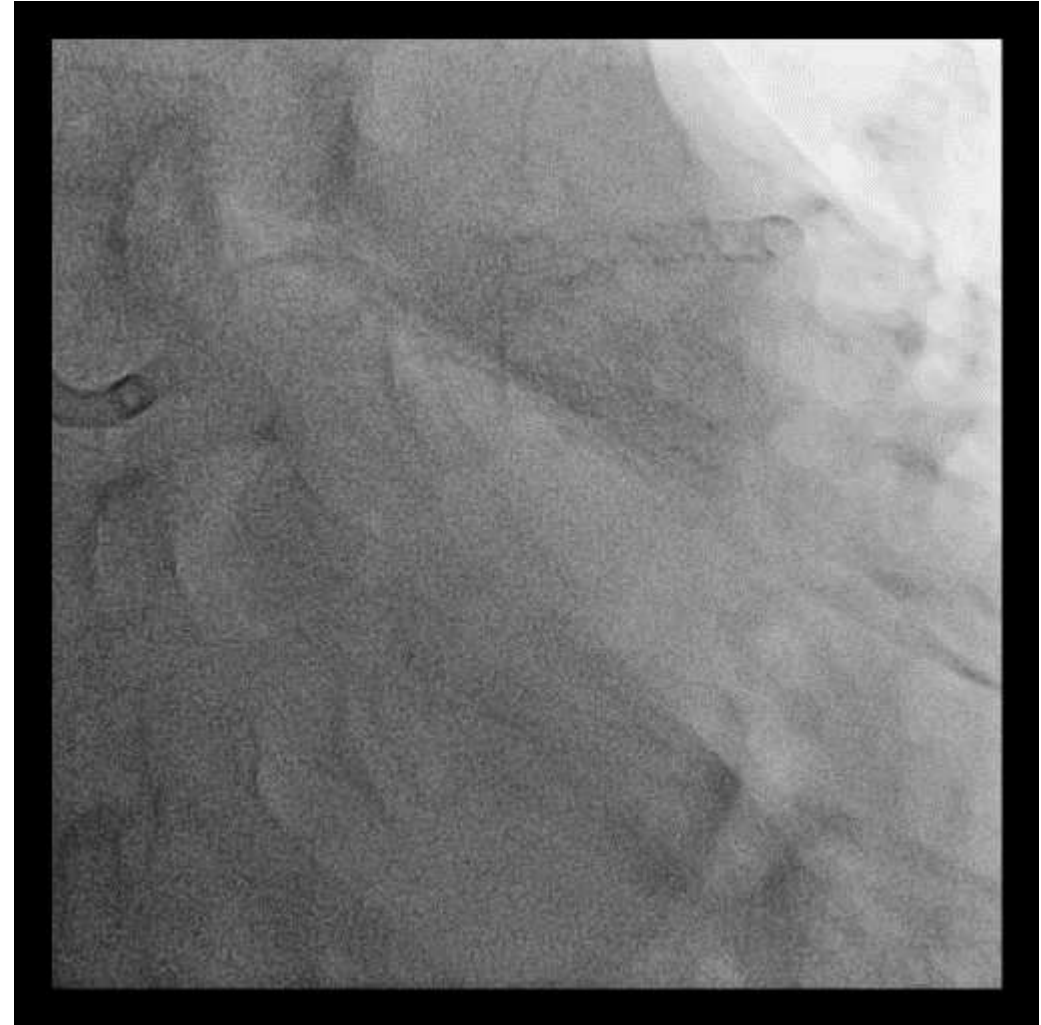
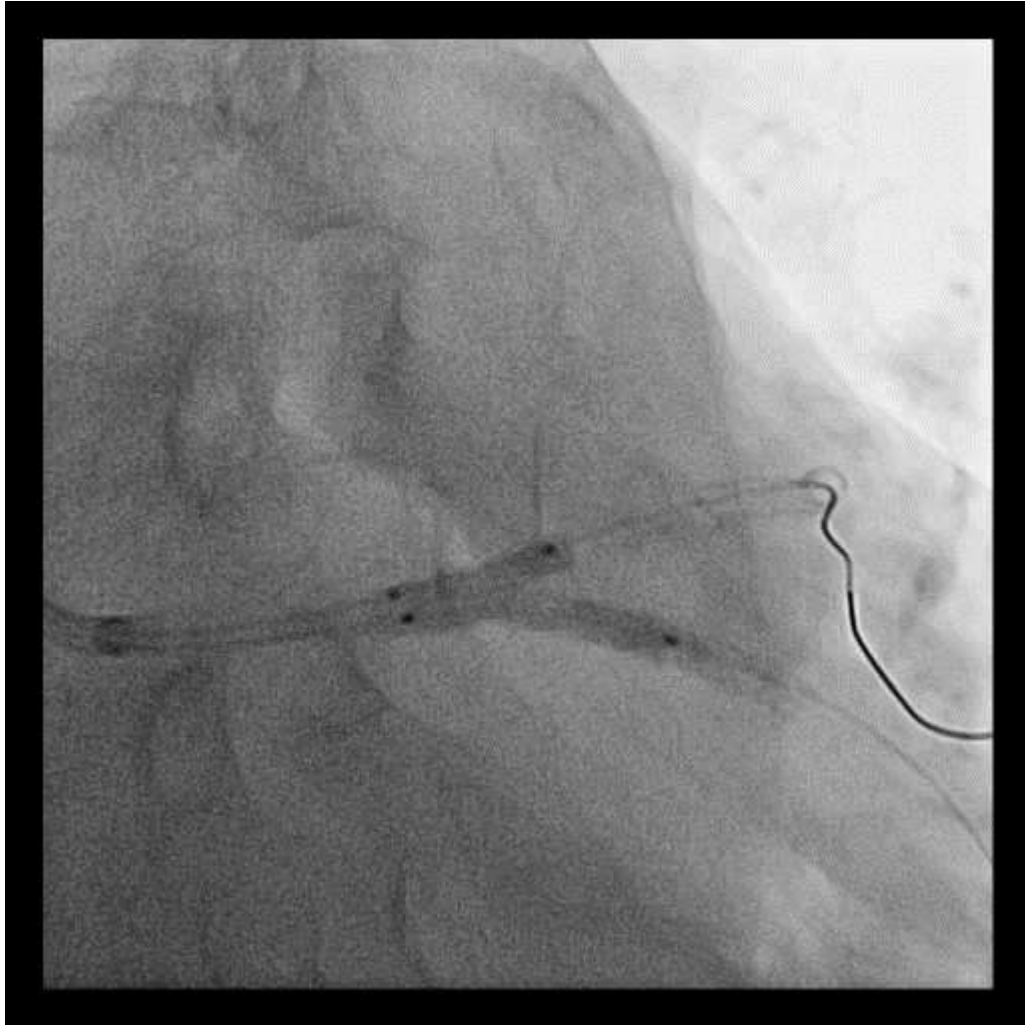


Proximal crossing



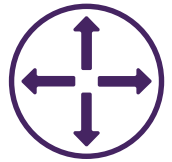
Distal crossing



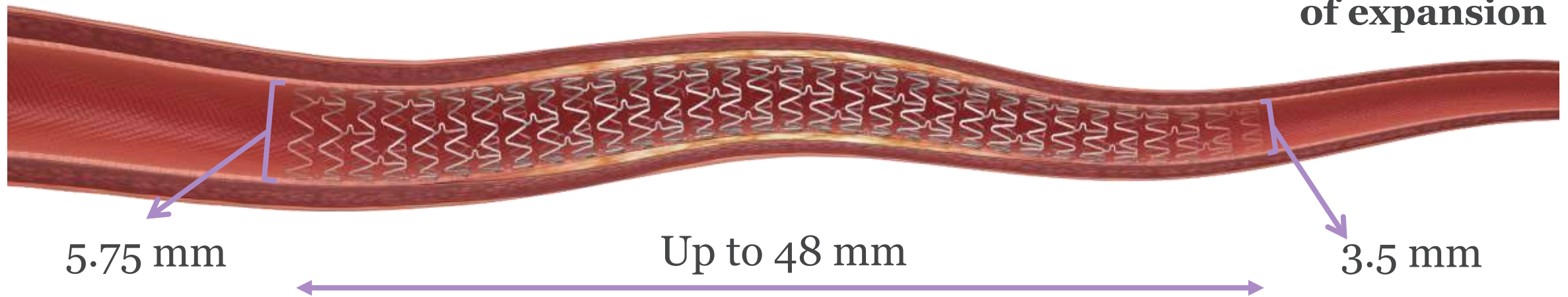


NC Emerge 3.0x12 (LAD) + 2.75x15 (LCX)

XIENCE Skypoint™ Stent can treat tapered lesions in large vessels using a single stent¹



BETTER
EXPANSION



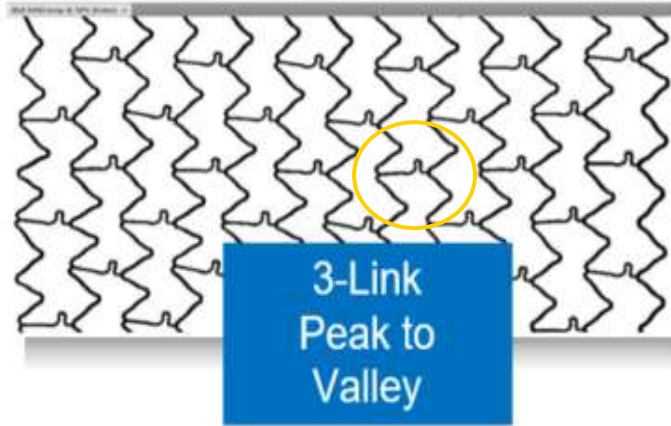
XIENCE Skypoint™ Stent achieves excellent stent expansion and apposition for a wide range of vessel sizes delivering optimal patient outcomes.²

1. Date on file at Abbott.

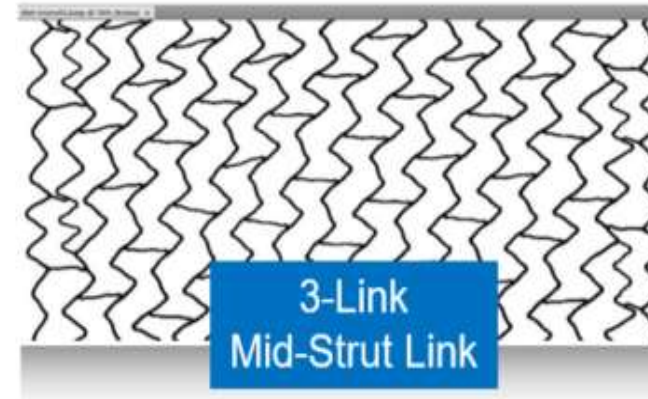
2. Sudhir K, et al. *ISRN Cardiol.* 2013;748736.

XIENCE™ stent has a consistent stent design.

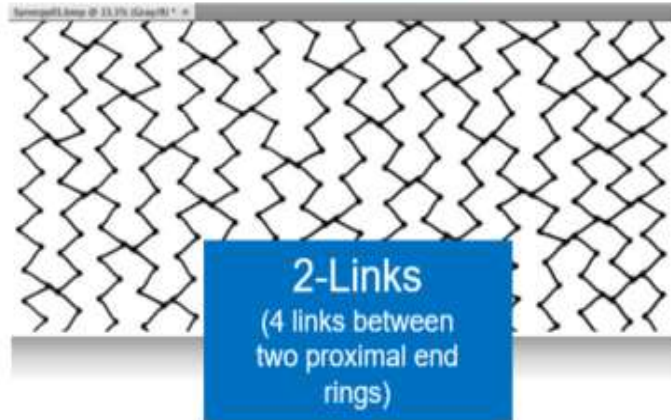
XIENCE 3.0x18 mm



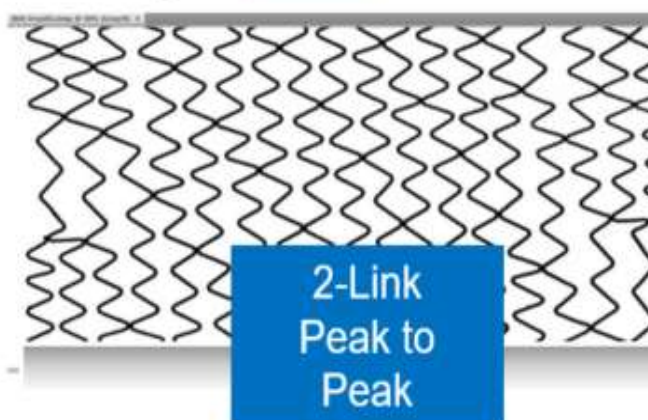
Orsiro™ 3.0x18 mm



Synergy™ 3.0x20 mm



Onyx™ 3.0x18 mm



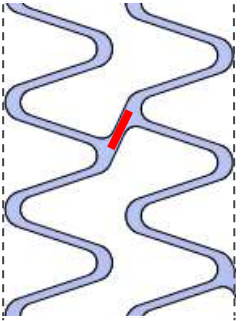
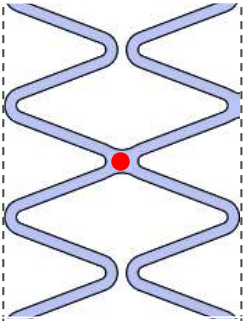
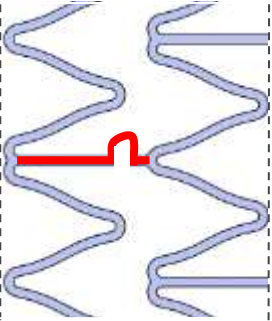
Stent Design

Peak-to-Valley
Long Link

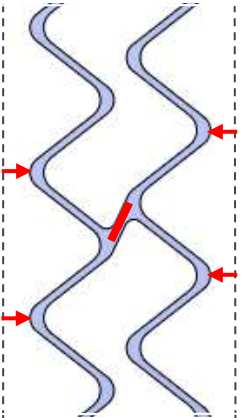
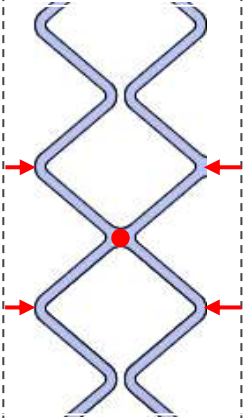
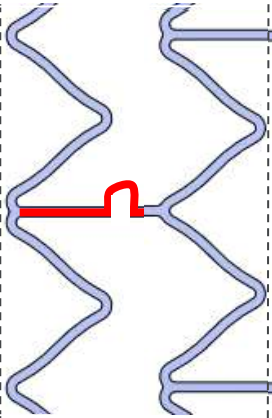
Peak-to-peak
Weld

Offset Peak-to-Peak
Short Connectors

Nominal Expansion

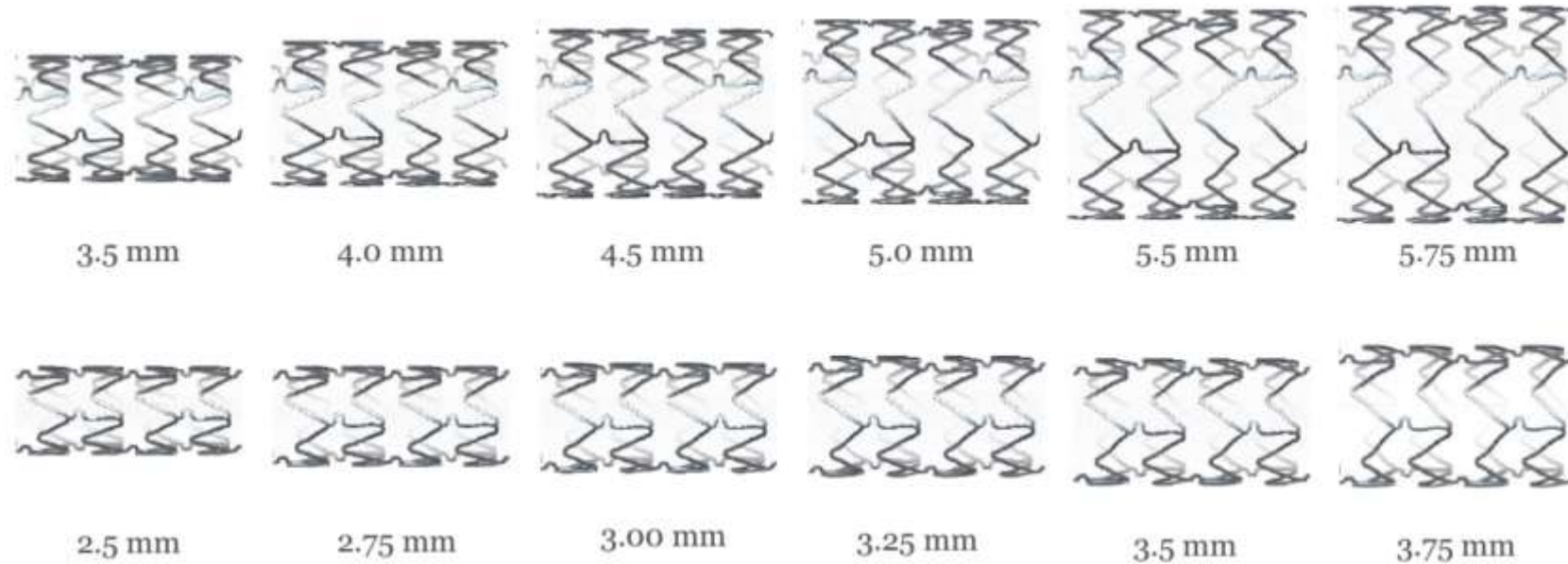


Expansion 0.5 mm Beyond Nominal



Illustrations are artists' renditions.

XIENCE™ stent has a consistent stent design.

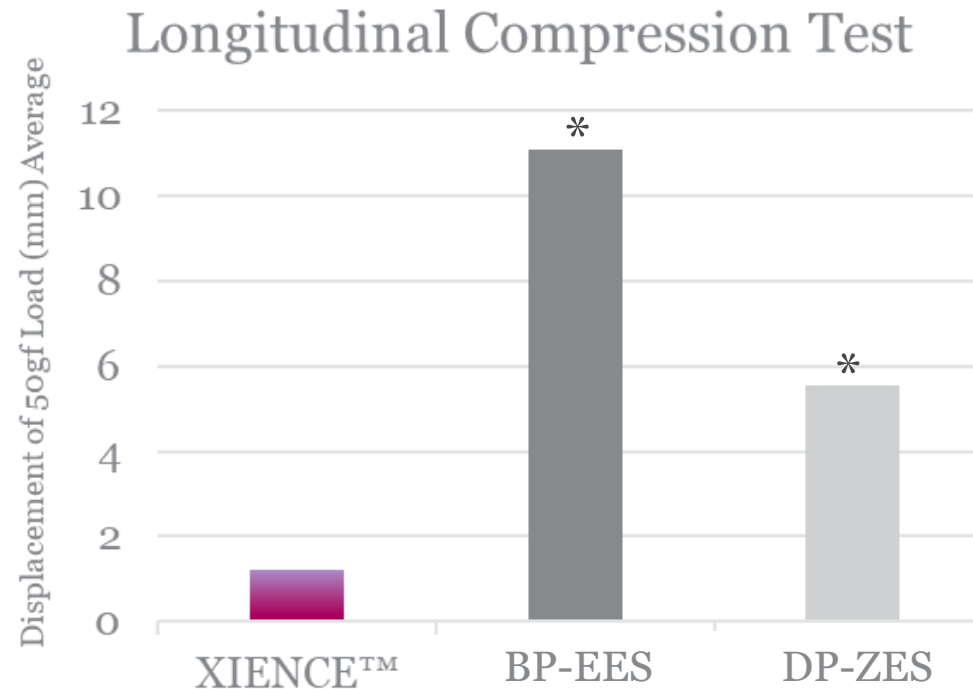


Less stent pattern deformation potentially leads to better apposition, lesion scaffolding and more uniform drug distribution.

XIENCE™ Stent platform shows excellent longitudinal strength providing scaffolding and stability¹



BETTER
EXPANSION



MULTI-LINK stent platform has 3 links per ring that connect peaks of one ring to the valleys of the adjacent ring. This design prevents struts from compressing together and stretching apart (elongating).

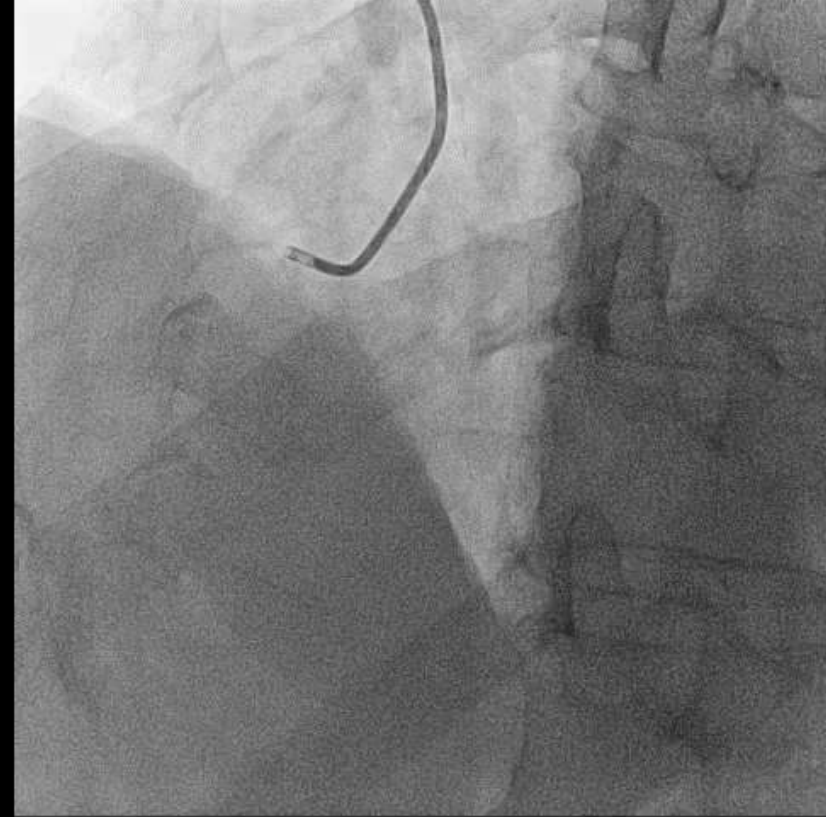
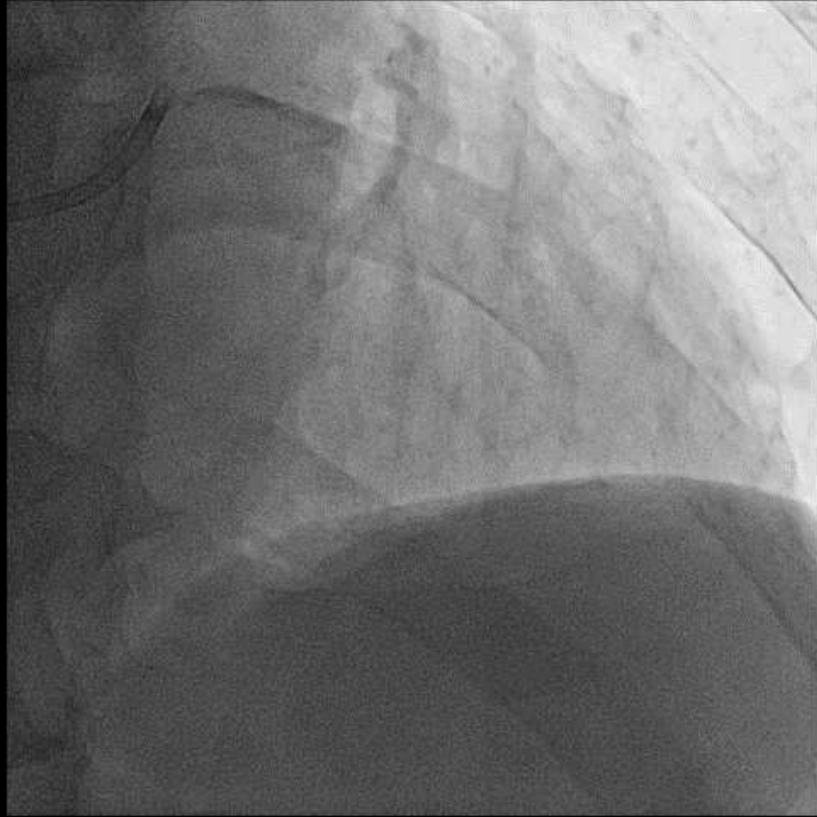


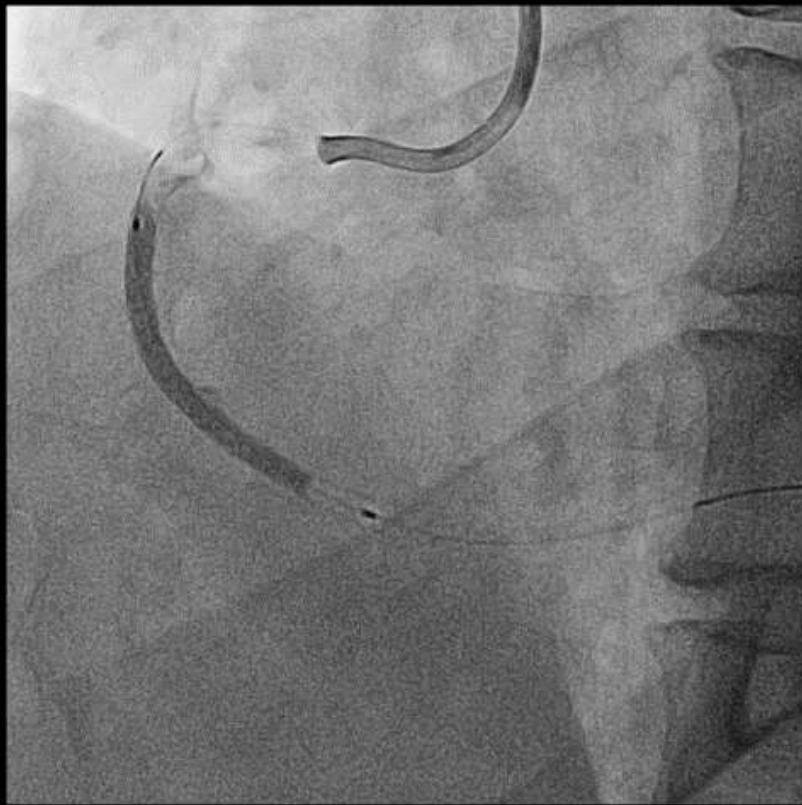
XIENCE Skypoint™ Stent has significantly better longitudinal strength to help ensure optimal procedural outcomes.

1. Test performed by and data on file at Abbott. XIENCE Sierra™ Stent (3.0 x 28 mm) n=5, BP-EES[‡] (3.0 x 28 mm) n=5, DP-ZES[‡] (3.0 x 28 mm) n=5.

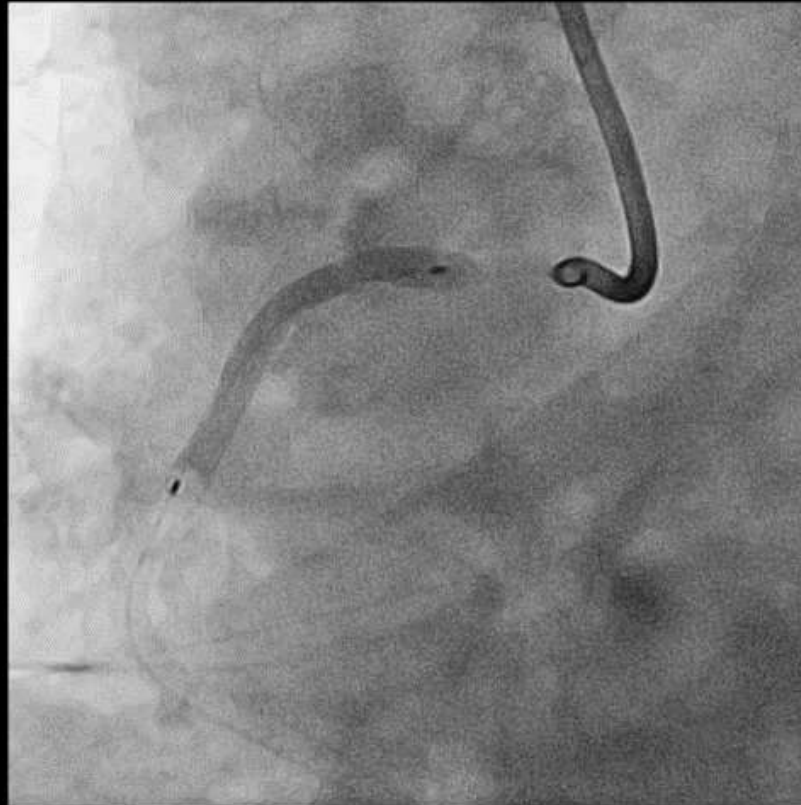
*Denotes statistically significant difference compared with XIENCE™ Stent.

66/F, NSTEMI, refused CABG

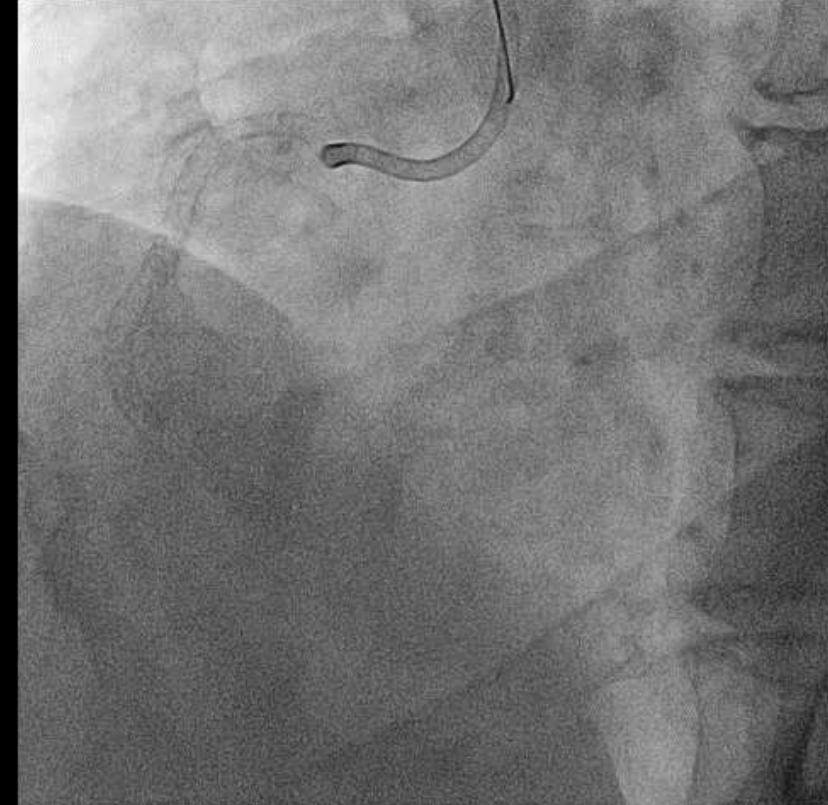


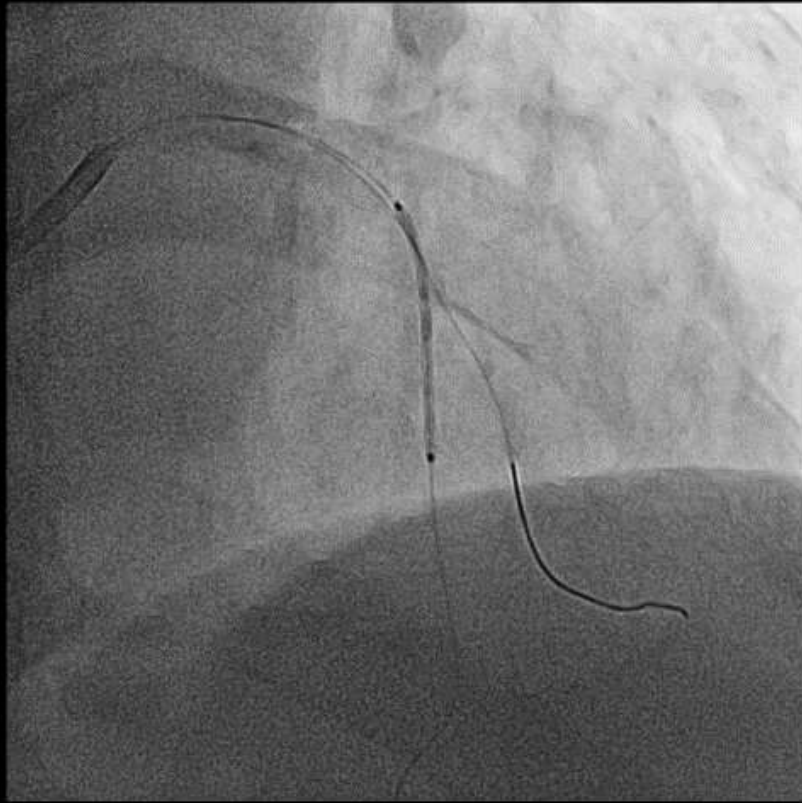


Xience skypoint 3.0x48

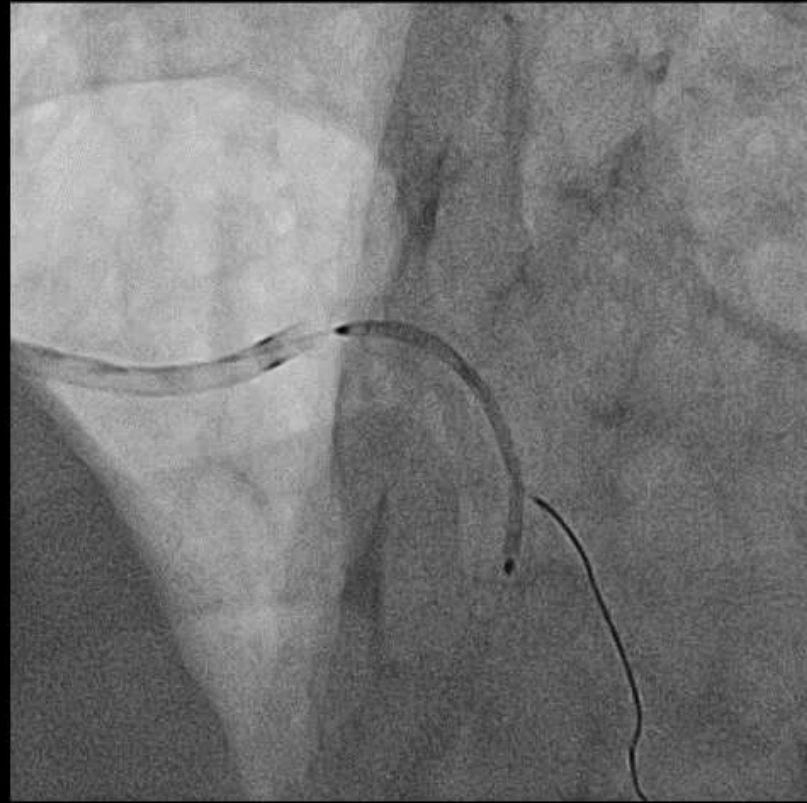


Xience skypoint 4.0x33

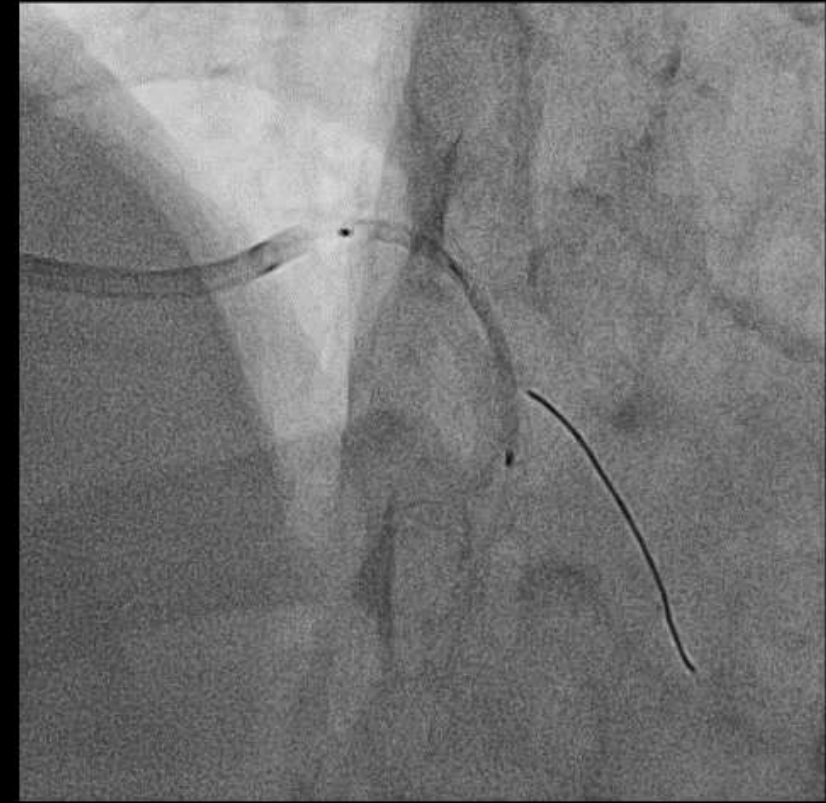




Xience skypoint 3.0 x 28



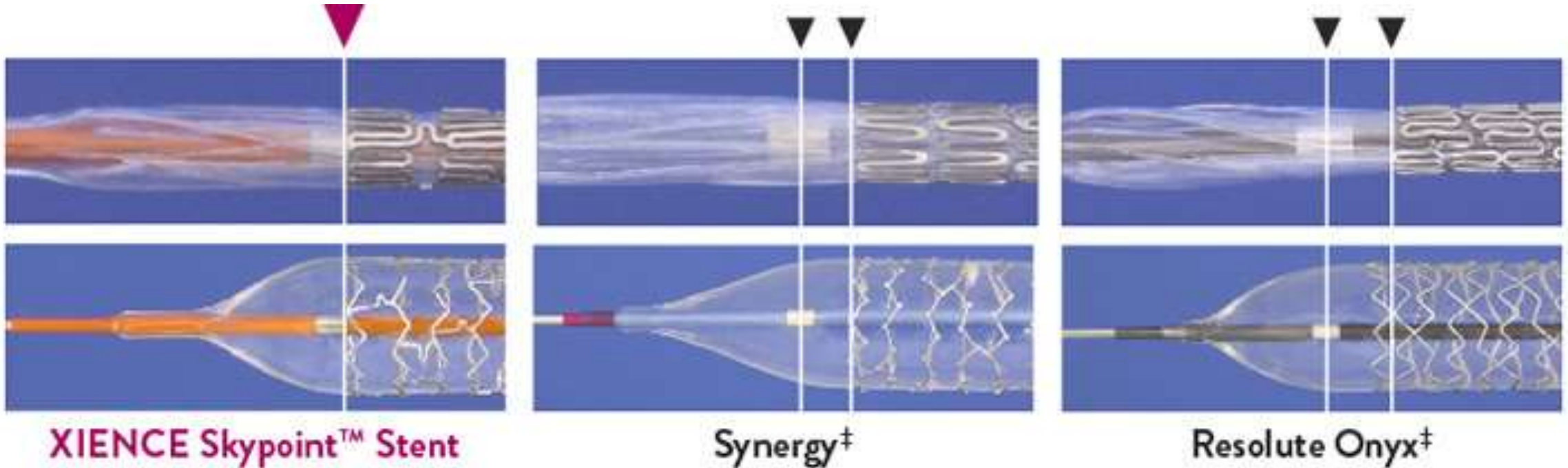
Xience skypoint 3.5 x 38

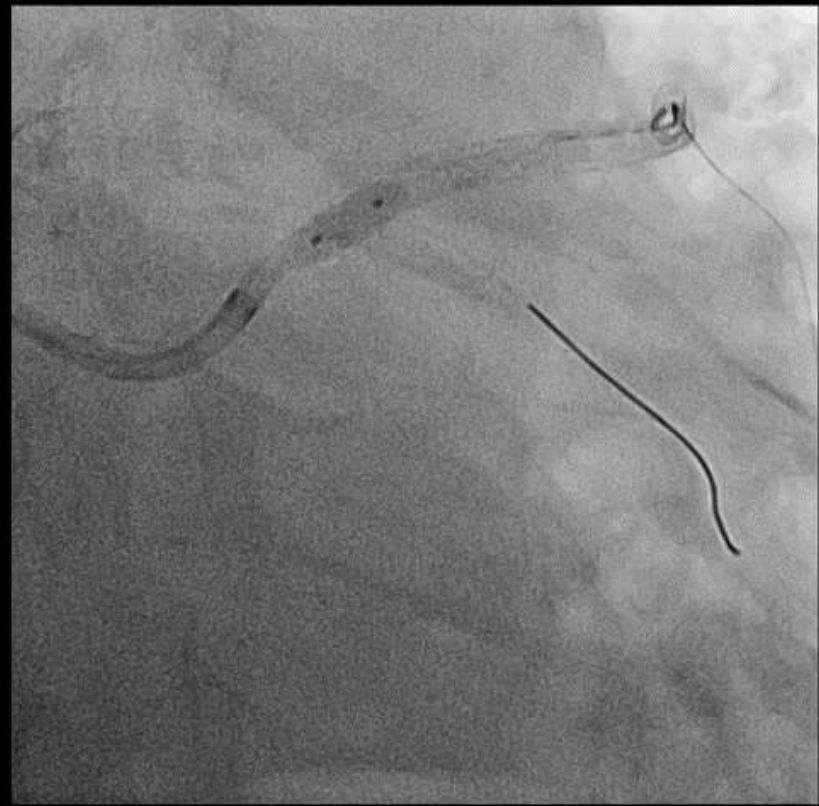
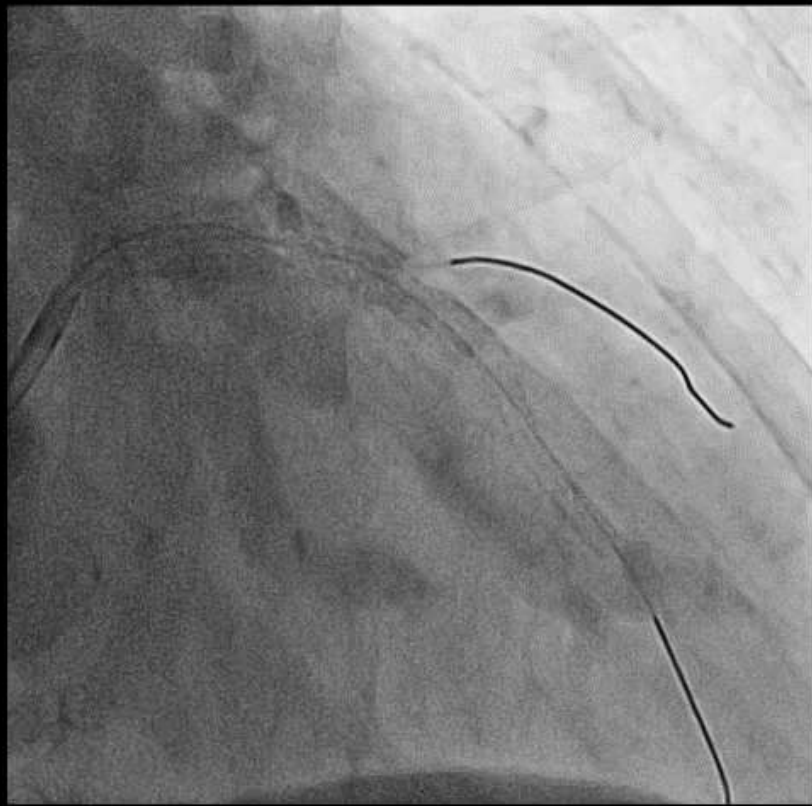


XIENCE Skypoint™ Stent Supports Accurate Stent Placement Through Precise Stent and Marker Placement



Accurate mid-marker placement enables precise scaffolding and reduces the likelihood of geographic miss to support optimal patient outcomes.





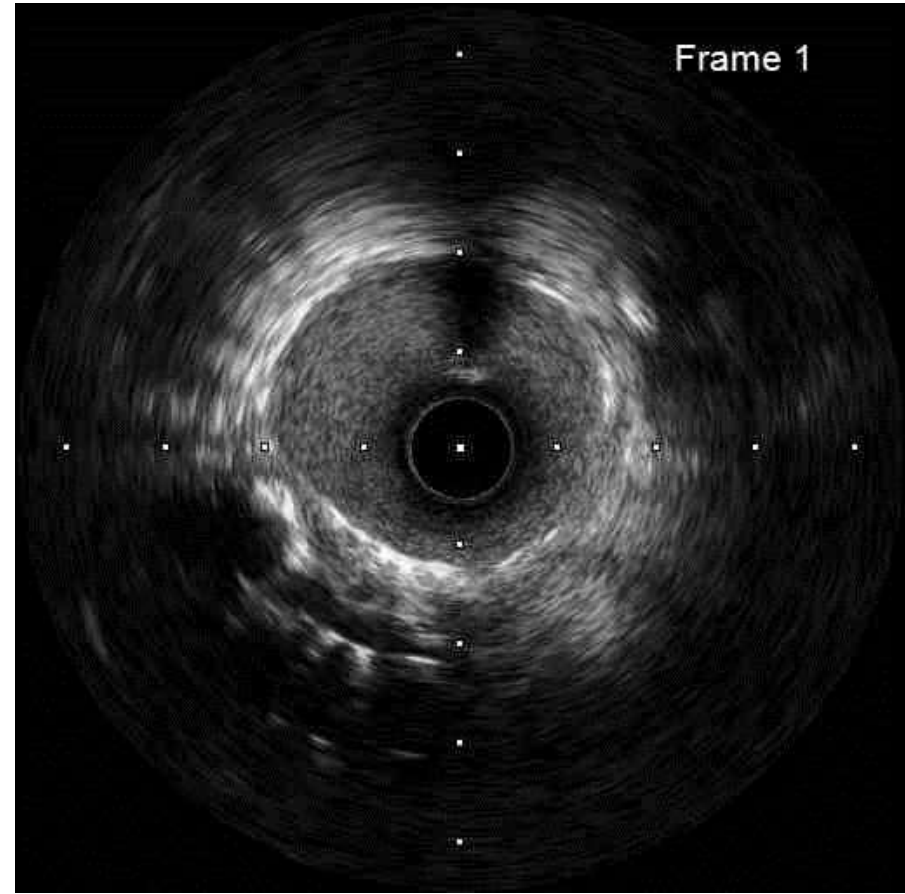
Selecthru NC 4.0x6



THE CATHOLIC UNIVERSITY OF KOREA
SEOUL ST. MARY'S HOSPITAL

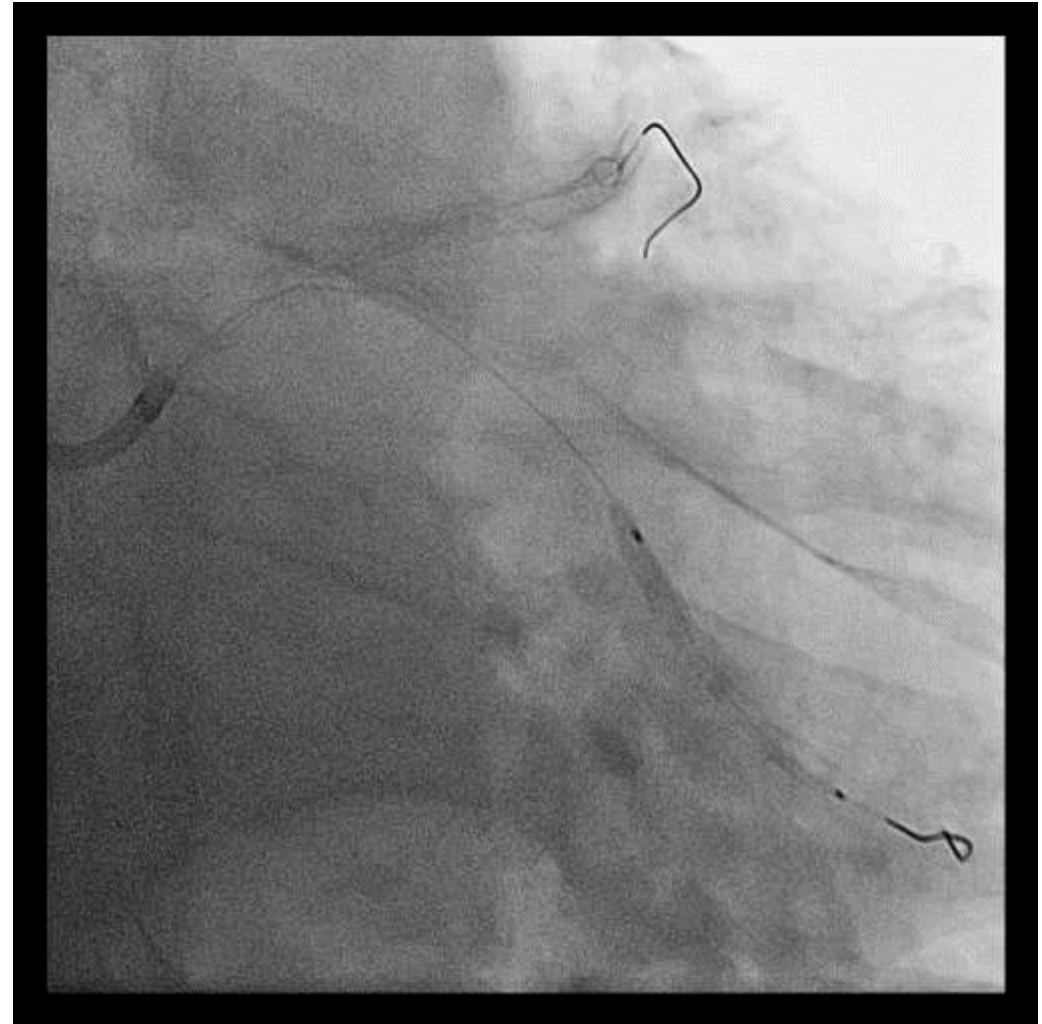


LAD

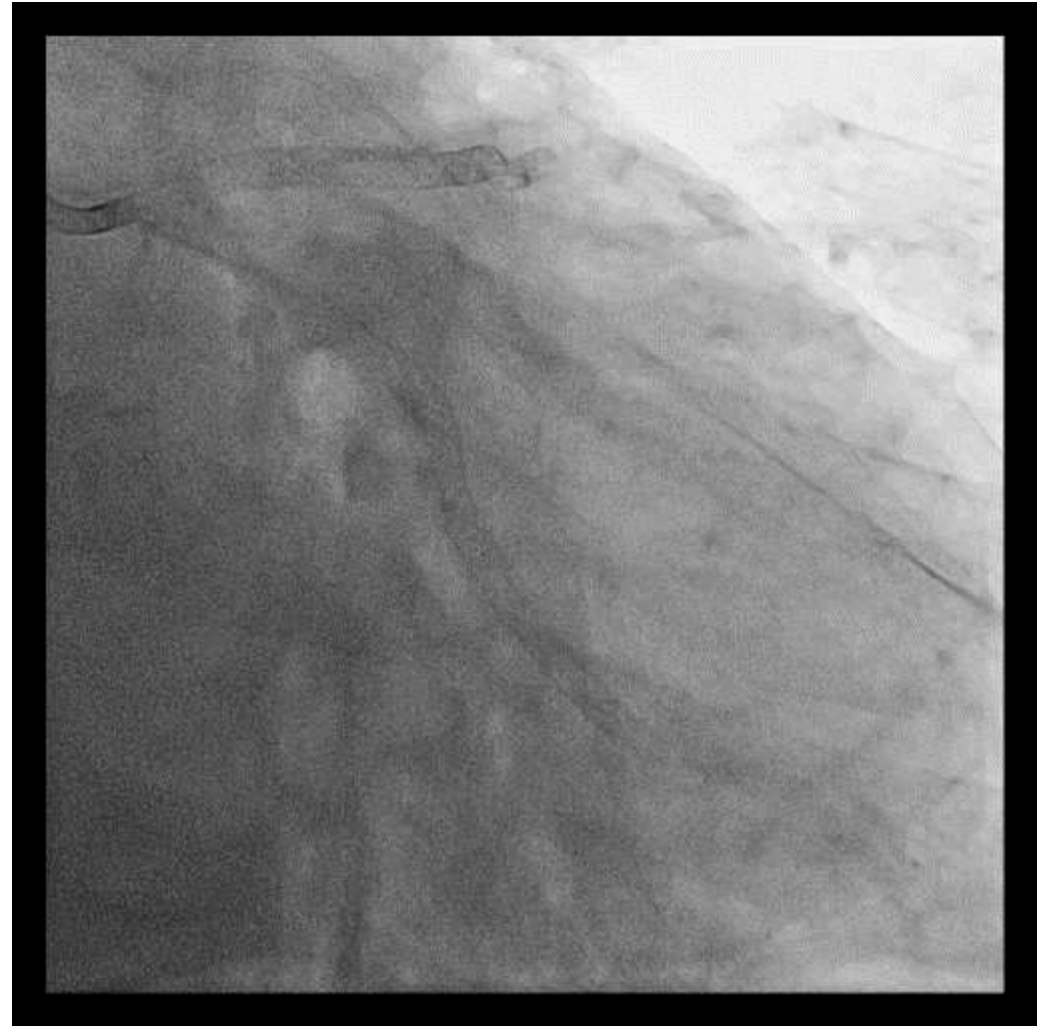
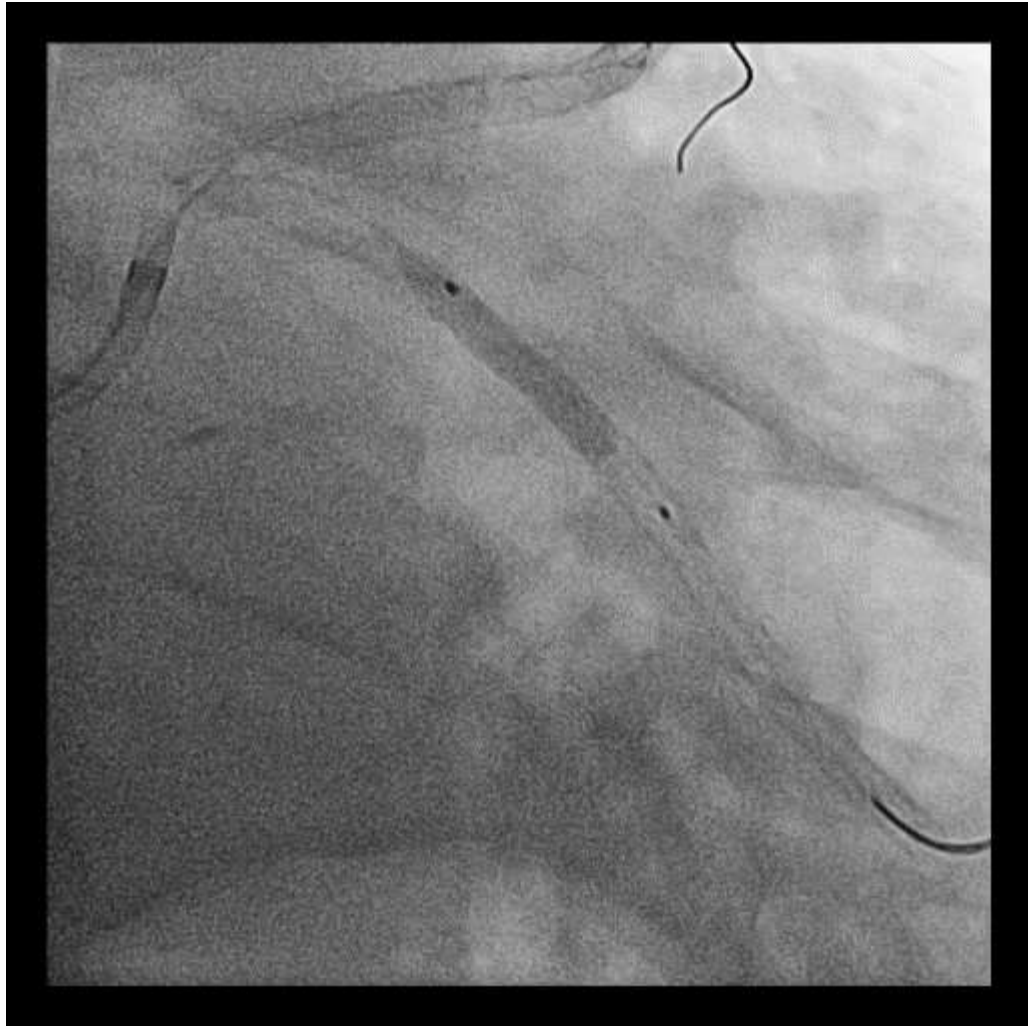




NC Accuforce 3.5x15 (LAD) + 3.0x15 (LCX)

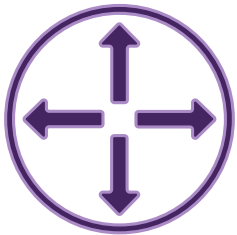


Xience skypoint 3.5 x 33



Xience skypoint 3.5 x 23

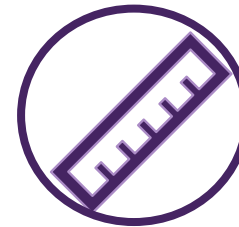
XIENCE Skypoint™ Stent is the latest generation XIENCE™ Stent and has some additional innovation enhancements from XIENCE Sierra™ Stent



**BETTER
EXPANSION**



**EXCELLENT
DELIVERABILITY**



**NEW
48 MM DESIGN**



**MORE VISIBLE
CATHETER HUB**

XIENCE Skypoint™ Stent has a **slimmer catheter** and seamless one-piece catheter shaft



EXCELLENT
DELIVERABILITY

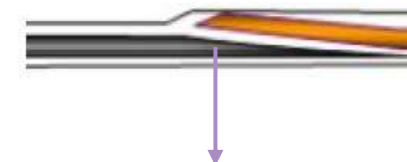
Slimmer catheter profile and seamless **one-piece** shaft with **reduced profile (0.001")** to optimize **deliverability** and pushability¹.



XIENCE™

XIENCE Skypoint™

Seamless one-piece
catheter shaft



Guide Wire Exit Notch

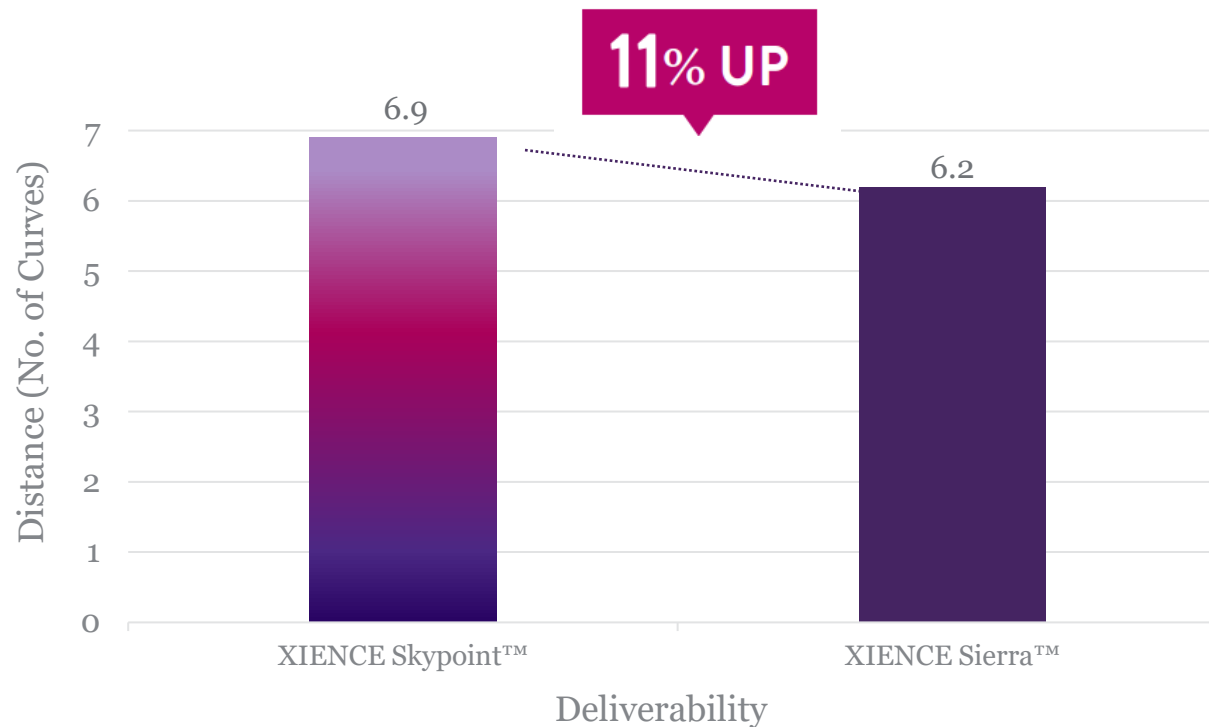
0.001" / 0.0025 mm reduction
in guide-wire notch profile

1. Data on file at Abbott. XIENCE Skypoint™ compared with XIENCE Sierra™. Reduction in profile is not applicable for 48 mm sizes.

XIENCE Skypoint™ Stent improved deliverability to help optimize acute performance



EXCELLENT
DELIVERABILITY

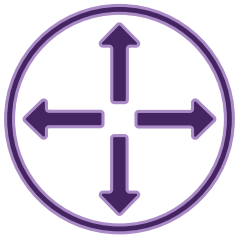


Tests performed and data on file at Abbott. 3.0 x 18 mm stents tested using a simulated arterial model.

Information contained herein for DISTRIBUTION outside the U.S. ONLY. Check the regulatory status of the device in areas where CE marking is not the regulation in force.

©2021 Abbott. All rights reserved. MAT-2106626 v2.0

XIENCE Skypoint™ Stent is the latest generation XIENCE™ Stent and has some additional innovation enhancements from XIENCE Sierra™ Stent



**BETTER
EXPANSION**



**EXCELLENT
DELIVERABILITY**

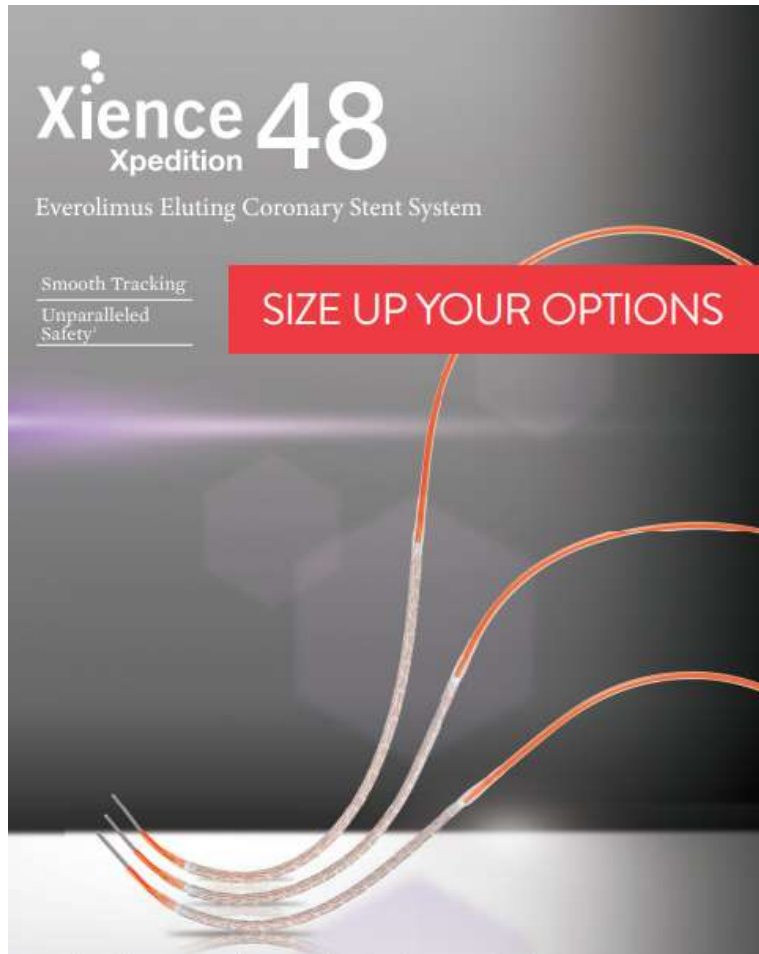


**NEW
48 MM DESIGN**

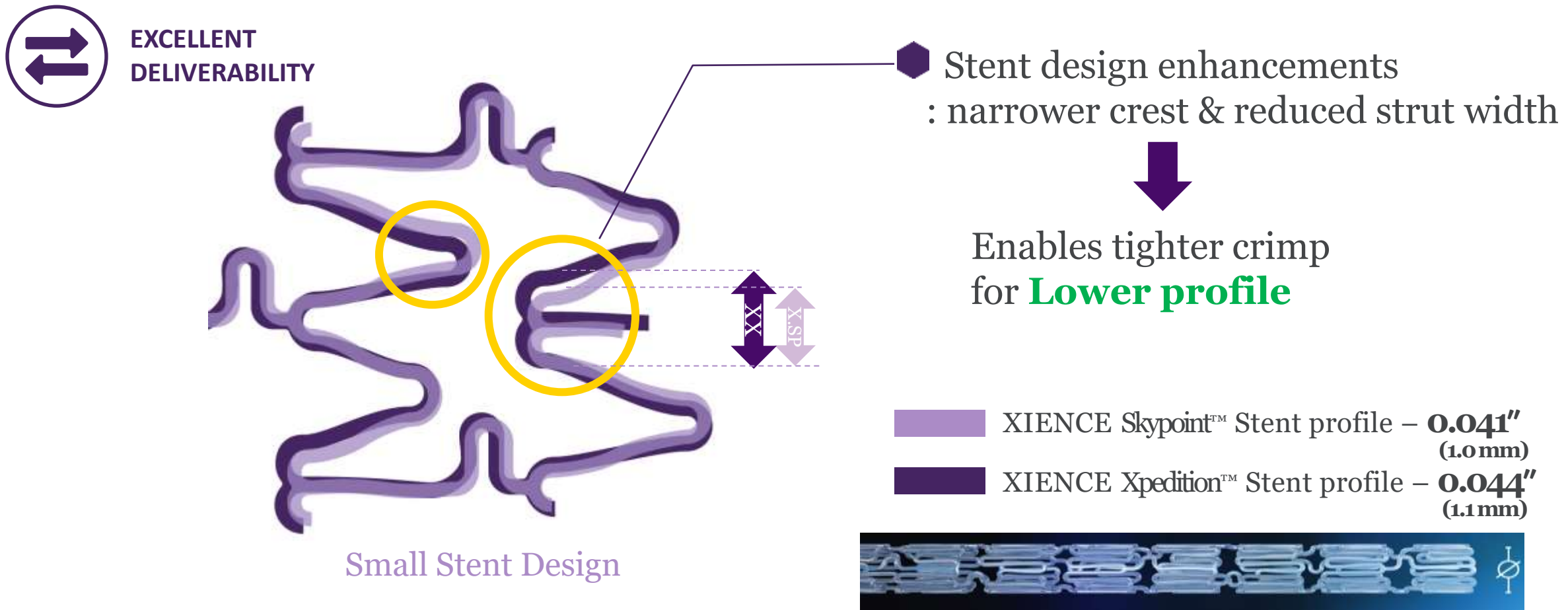


**MORE VISIBLE
CATHETER HUB**

X.Xpedition 48 vs. X. Skypoint 48



XIENCE Skypoint™ Stent 48 mm has a lower crossing profile compared with XIENCE Xpedition™ Stent 48 mm



Data on file at Abbott. Average stent profile – XIENCE Skypoint™ 3.0 x 48 mm compared with XIENCE Xpedition™ 3.0 x 48 mm. Applicable only to 2.5 - 3.0 mm stent sizes.

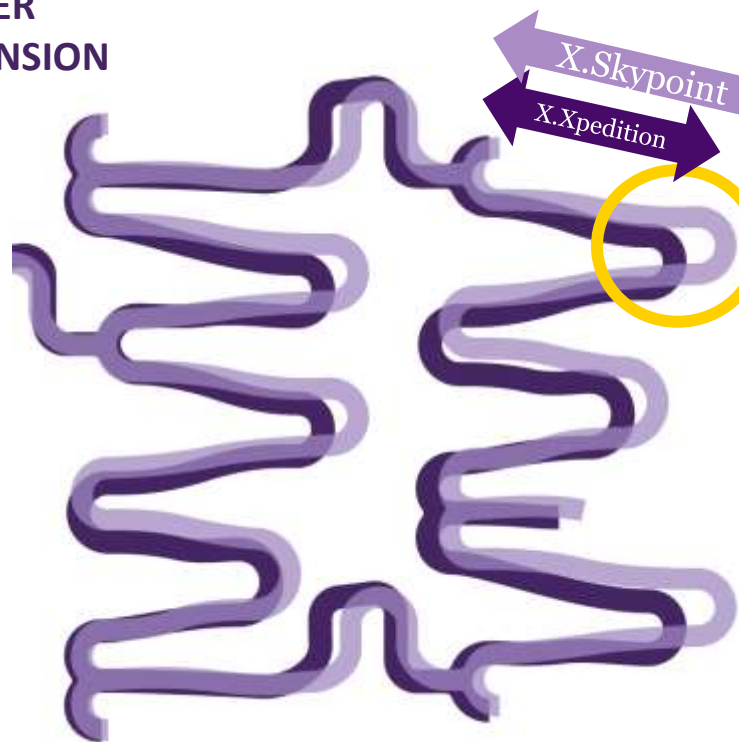
Information contained herein for DISTRIBUTION outside the U.S. ONLY. Check the regulatory status of the device in areas where CE marking is not the regulation in force. Page 33 of 47

©2021 Abbott. All rights reserved. MAT-2106626 v2.0

XIENCE Skypoint™ Stent 48 mm has an enhanced stent design compared with XIENCE Xpedition™ Stent 48 mm



BETTER EXPANSION



Longer bar arms & Cell length



for Larger expansion & Cell expansion

-  XIENCE Skypoint™ Stent - **5.75 mm**
-  XIENCE Xpedition™ Stent - **4.5 mm**

Medium Stent Design

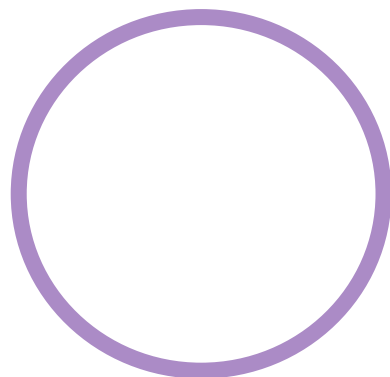
Data on file at Abbott. Note: Elongated bar arms is for medium stent design (9-crest design), 3.5 mm and 4.00 mm.

XIENCE Skypoint™ Stent 48 mm hypotube has a larger wall-thickness to support **excellent pushability**

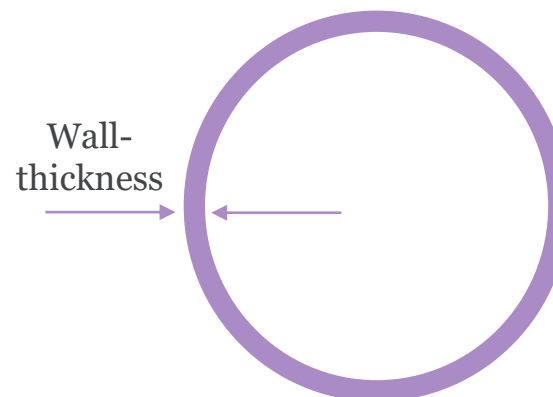


EXCELLENT
DELIVERABILITY

Hypotube wall **thickness increased** and optimized for excellent **pushability** and deliverability – **33% increase** in wall thickness.



XIENCE Xpedition™
Stent



XIENCE Skypoint™
Stent

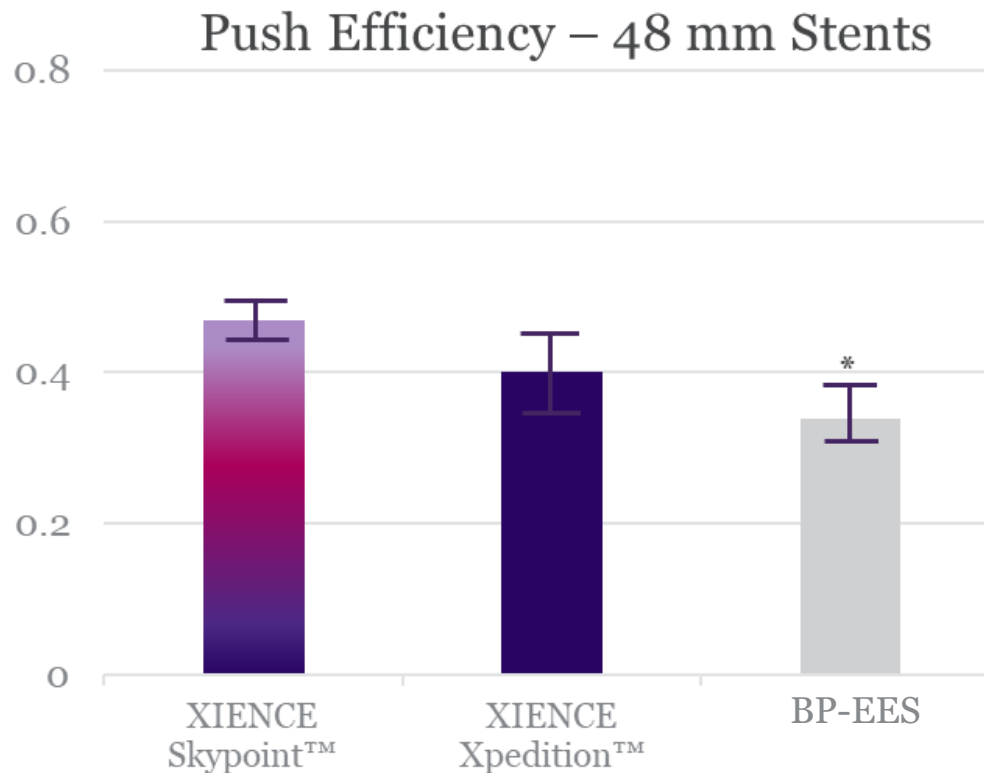
Data on file at Abbott – Hypotube wall thickness information – XIENCE Skypoint™ Stent 0.004" compared with XIENCE Xpedition Stent – 0.003".

XIENCE Skypoint™ Stent – 48 mm design – shows better pushability than competitor DES¹



EXCELLENT
DELIVERABILITY

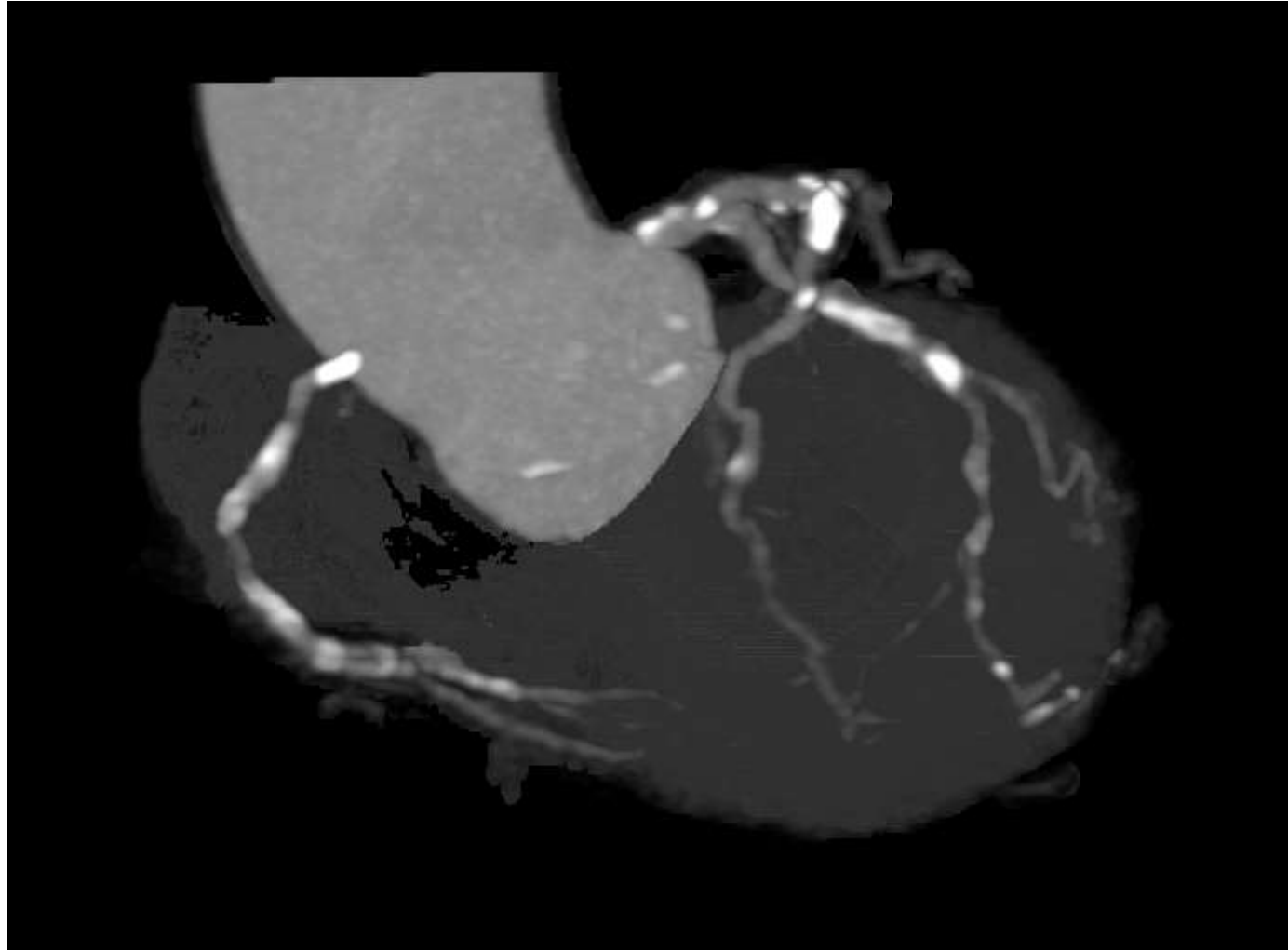
Higher is better
Average Push Efficiency
(gf/gf)

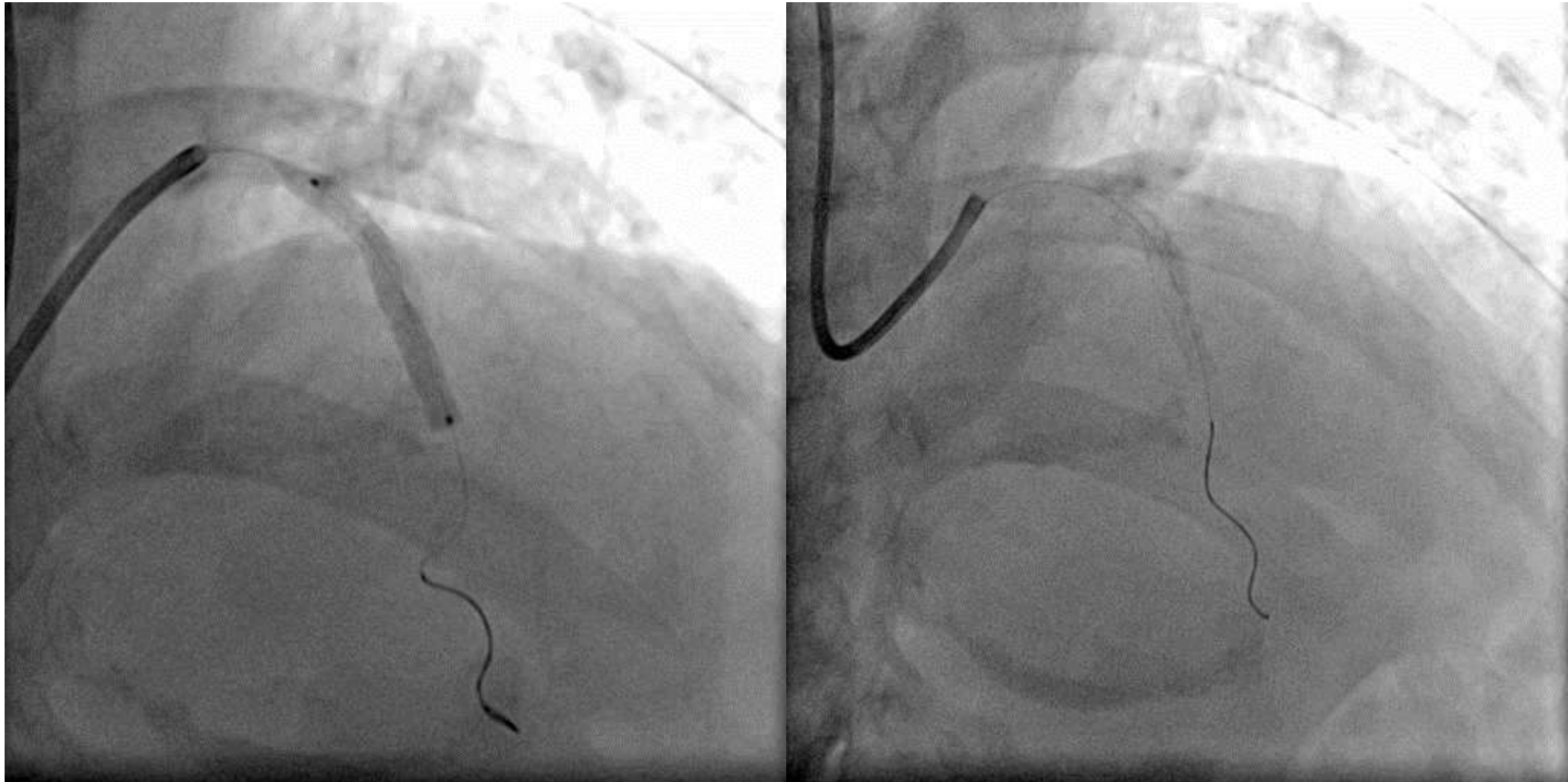


1. Test performed and data on file at Abbott. Bench model – 3.0 x 48 mm stents tested.

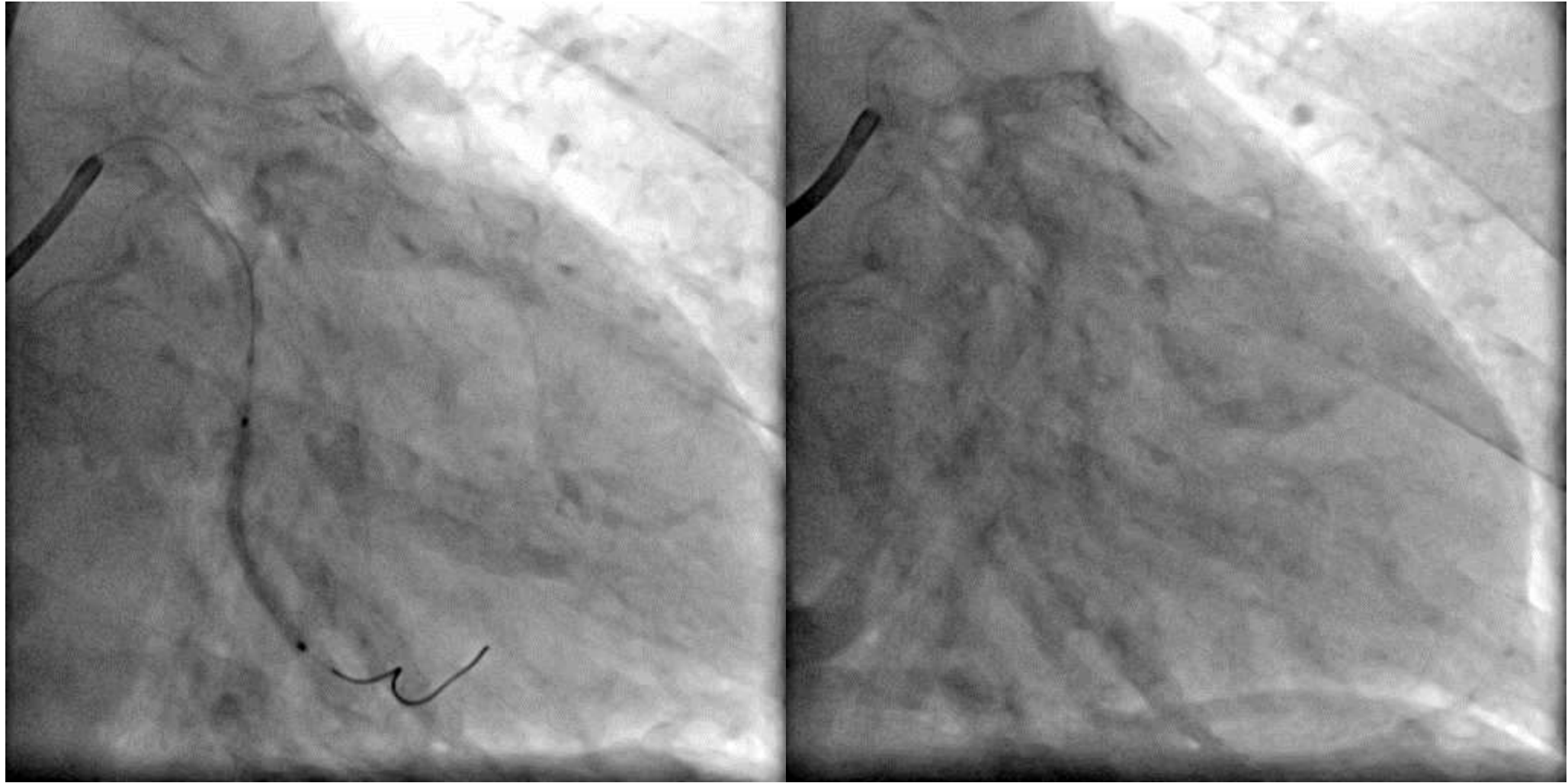
71/F, Unstable angina, DM for 40yrs





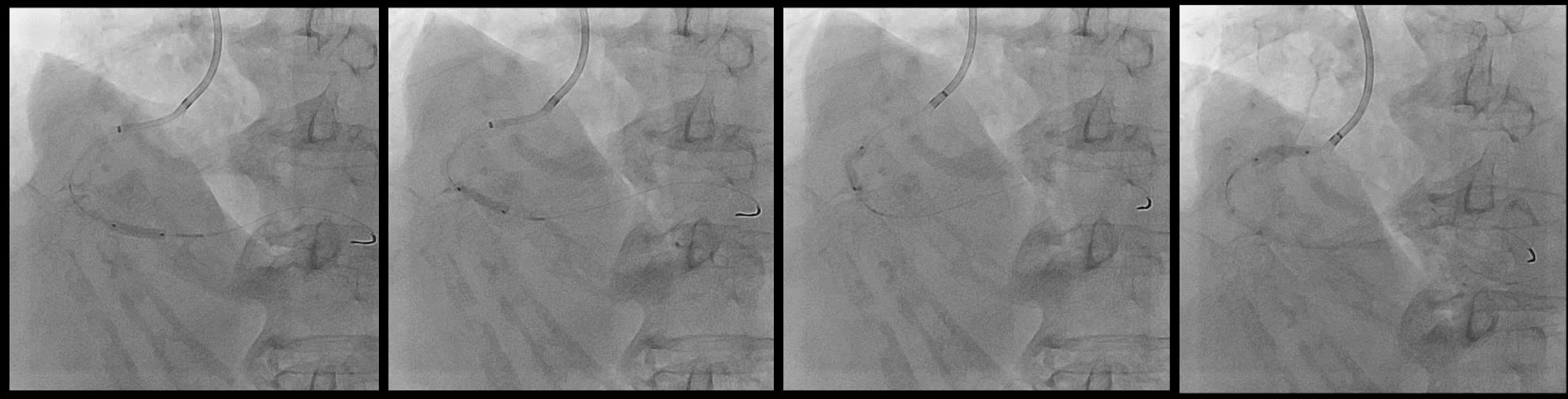


Xience skypoint 3.5 x 28



Sequent please 2.25x25







Xience skypoint 3.0 x 48



Xience skypoint 3.5 x 23



XIENCE Skypoint™ has a number of improvements

XIENCE Skypoint

Integrated one piece shaft

Guide Wire notch

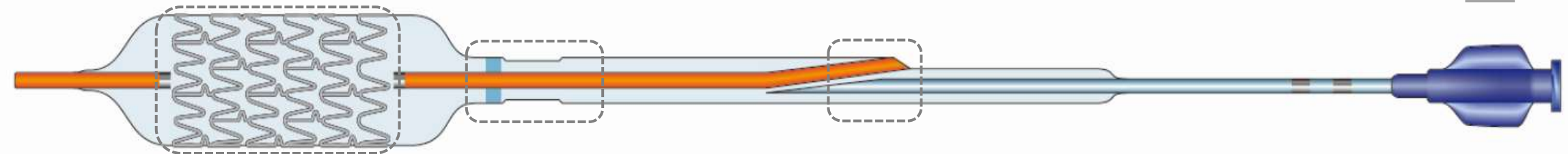
NEW 48 MM DESIGN

Larger Stent Expansion
3.5/4.0mm → 5.75mm

Integrated ONE PIECE shaft for lower crossing profile
Integrated mid-shaft to distal shaft catheter with 0.001"/0.0025mm reduction in guide wire notch profile which helps provide excellent deliverability

Improved catheter hub with more visible stent size labelling

XIENCE Sierra



Data on file at Abbott.

What does the name 'XIENCE Skypoint' MEAN?

XIENCE Skypoint



*Combines the ideas of **expansiveness** (sky) and*

→ Better Expansion

*being able to **deliver to a specific spot** (point)*

→ Deliverability