

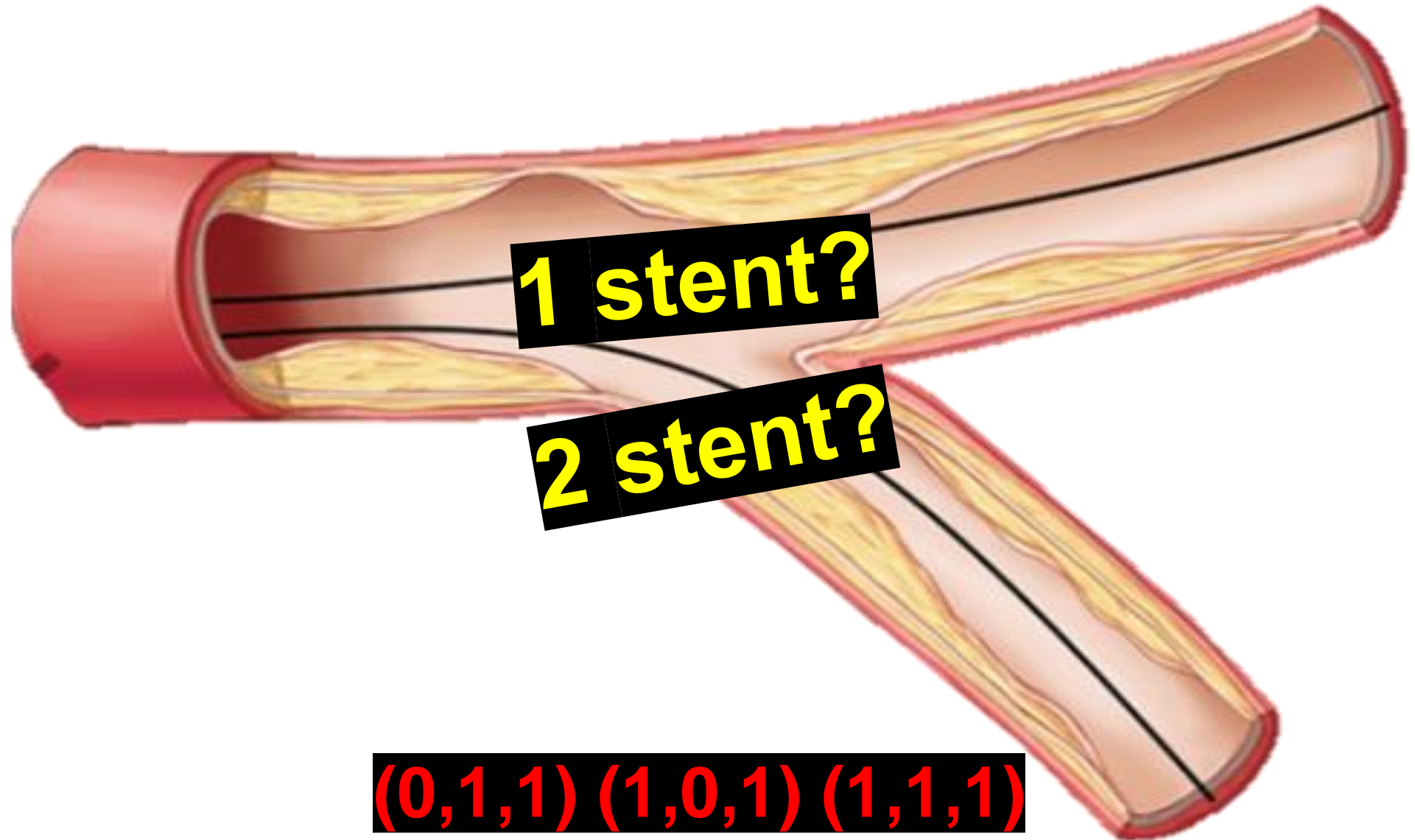
Challenging LM bifurcation two stent & FU ISR PCI

JIN WOO NAM, RT

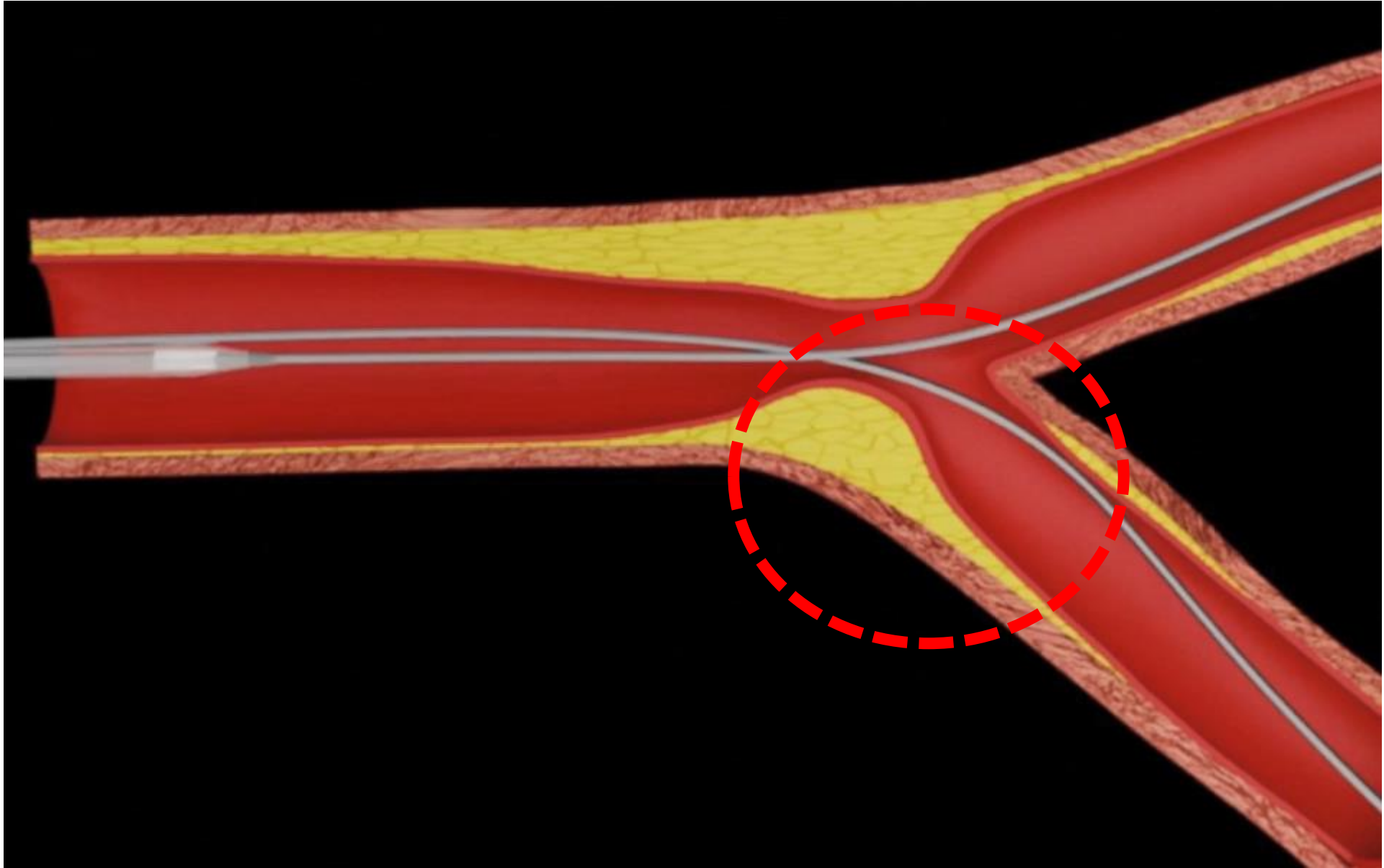


Cardiovascular Center, Anam Hospital
Korea University Medical Center

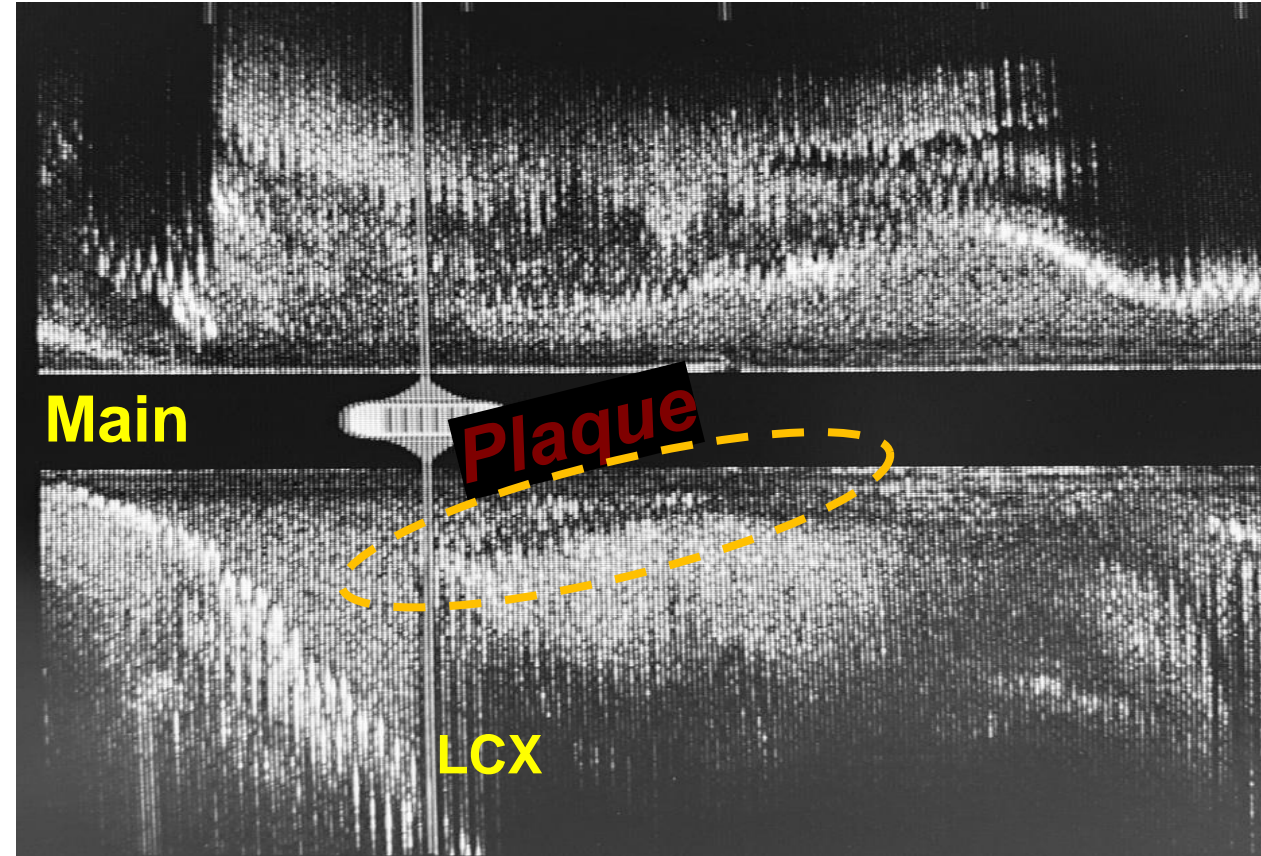
One stent is better? Two stent is better?



(0,1,1) (1,0,1) (1,1,1)



Plaque shift is the main determinant for SB OCCLUSION (usually combined with carina shift)



(Usually defined as SB **TIMI flow <3 after MV stenting**)



Stent factors

Underexpansion

Undersizing

INTRA-Stent factors

Calcification/Thrombus

Obstruction severity

EXTRA-Stent factors

Multiple stent layers

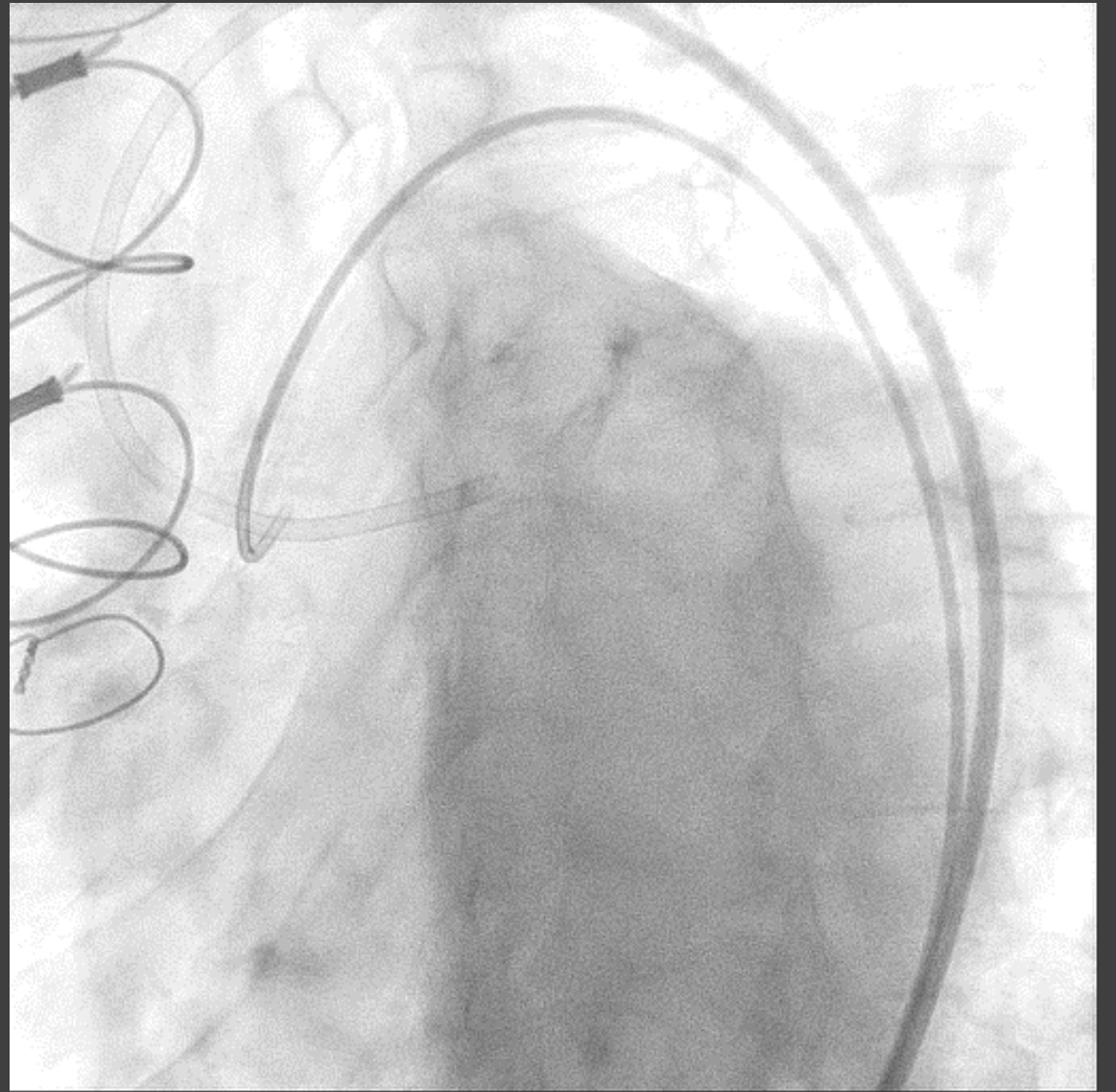
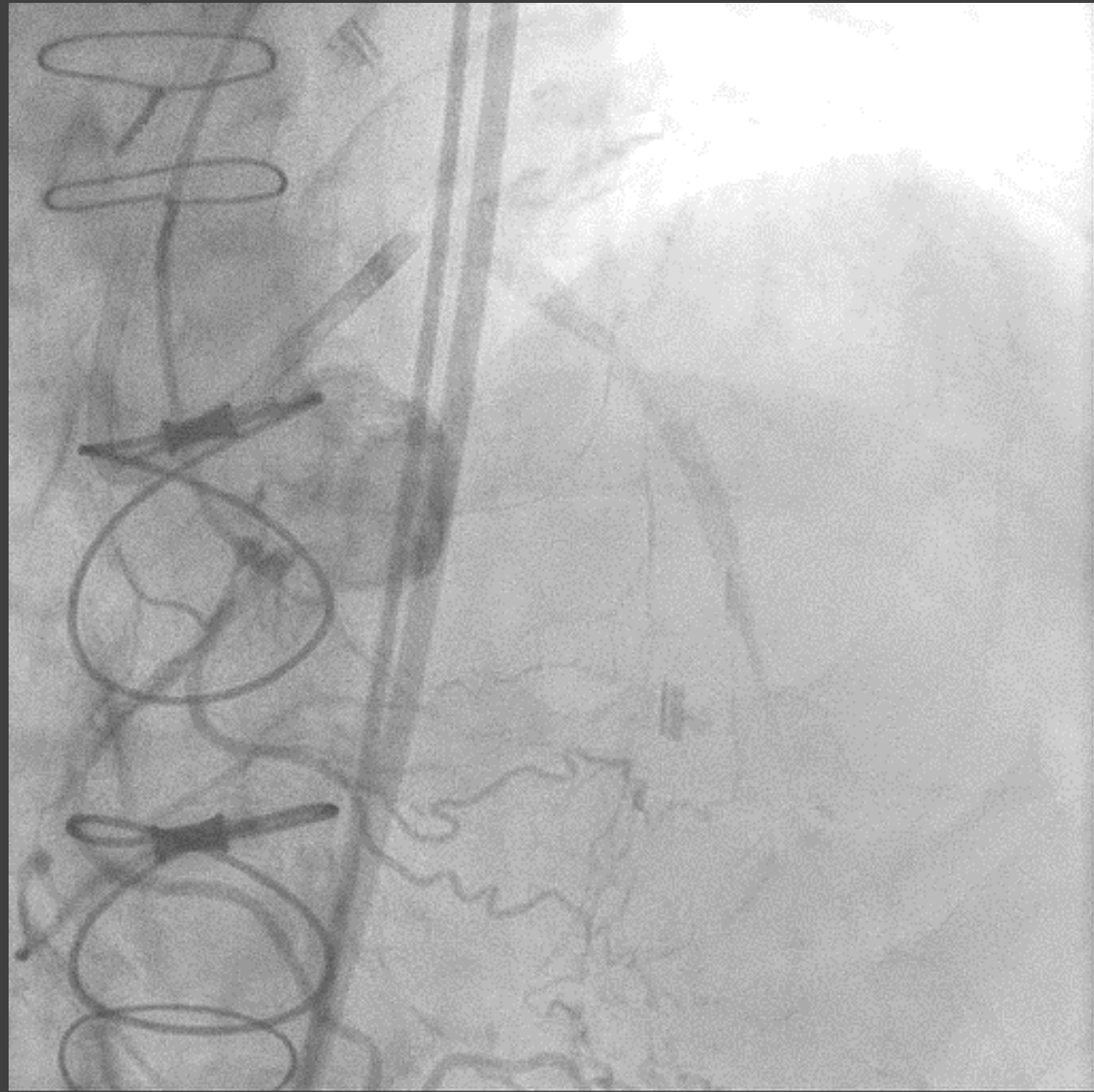
Calcified nodules

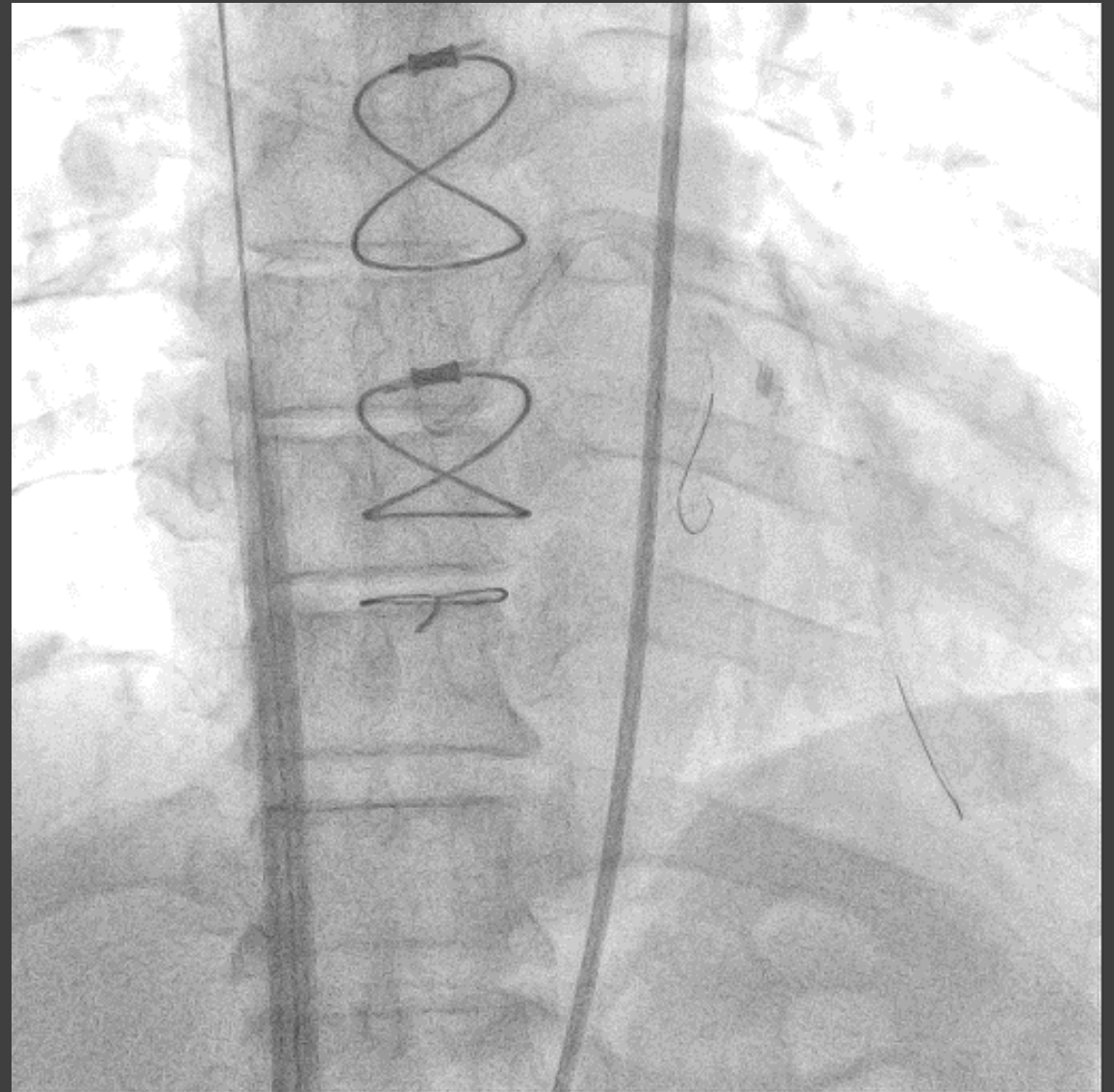
Residual plaque burden

CASE

Patient History

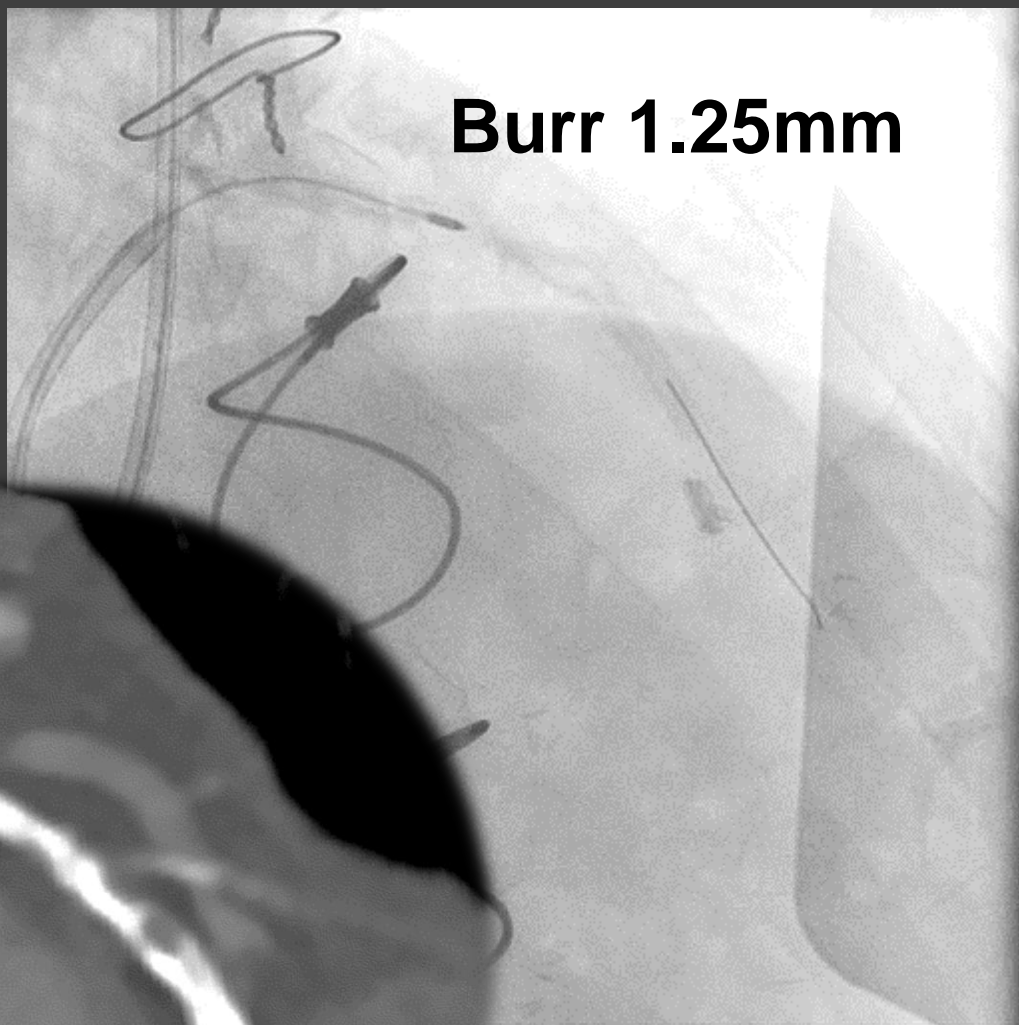
- M/72
- Hx ; 2016-12 CABG(sRIMA to GSV to LAD, GSV to OM1)
- Unstable angina, Hyperlipidemia, DM
- TTE ;
 - AKINETIC APEX,WHOLE SEPTUM AND MID TO APICAL LATERAL WALL
 - AKINETIC MID TO APICAL POSTERIOR WALL AND WHOLE INEFERIOR WALL
 - E/F 20%





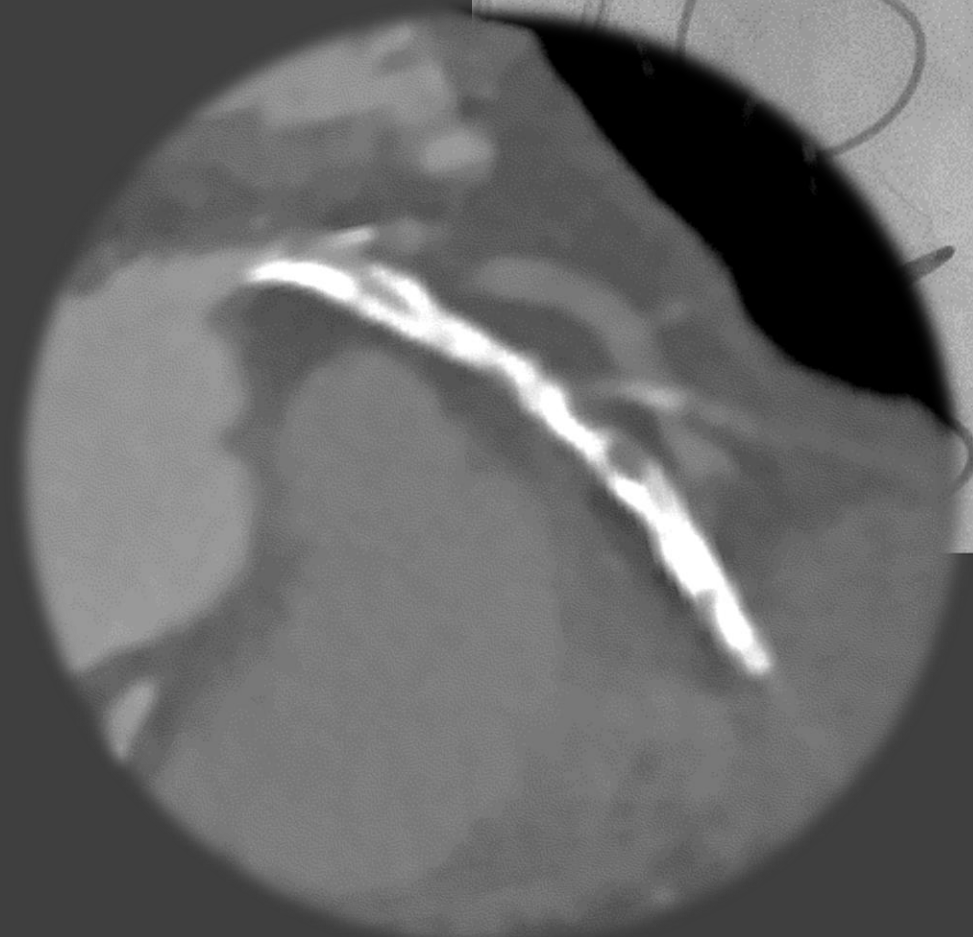
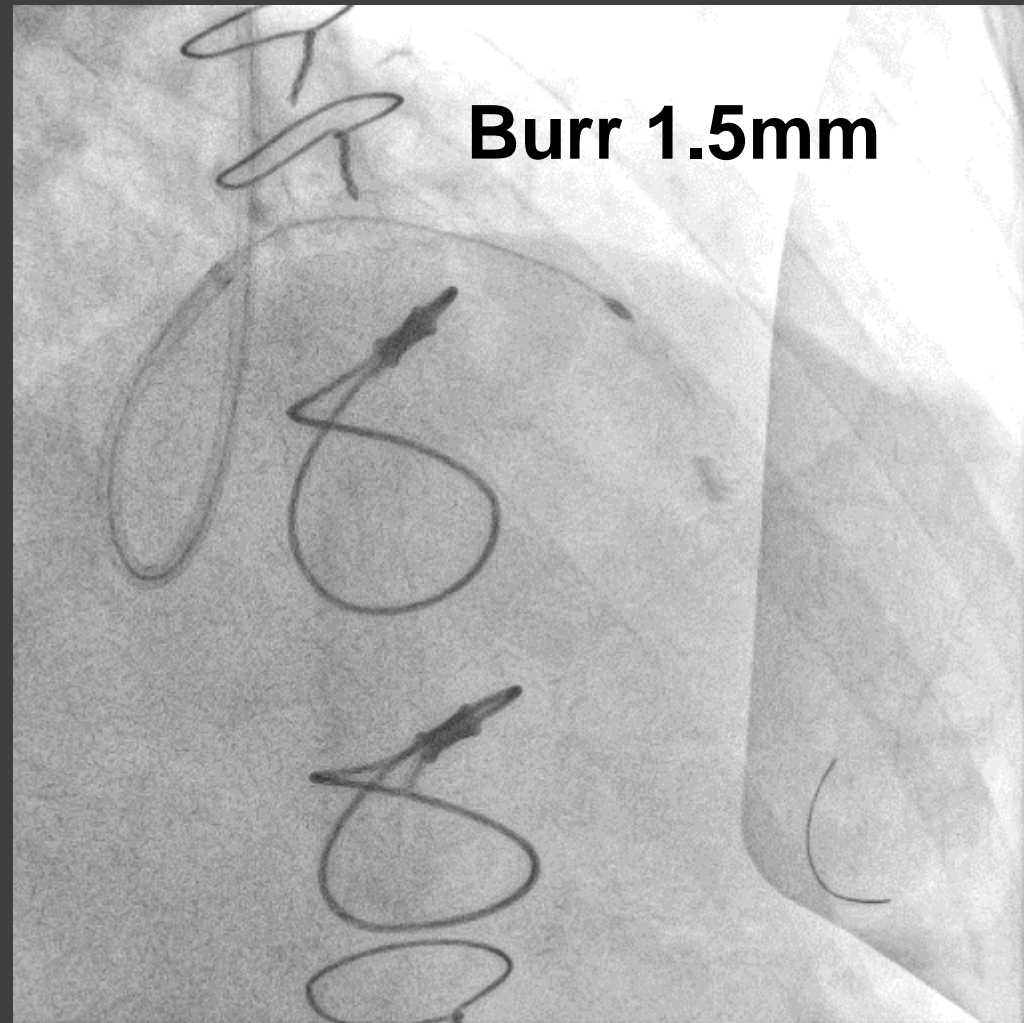
- BP drop & Chest pain(cardiogenic shock) > ECMO insertion

Burr 1.25mm

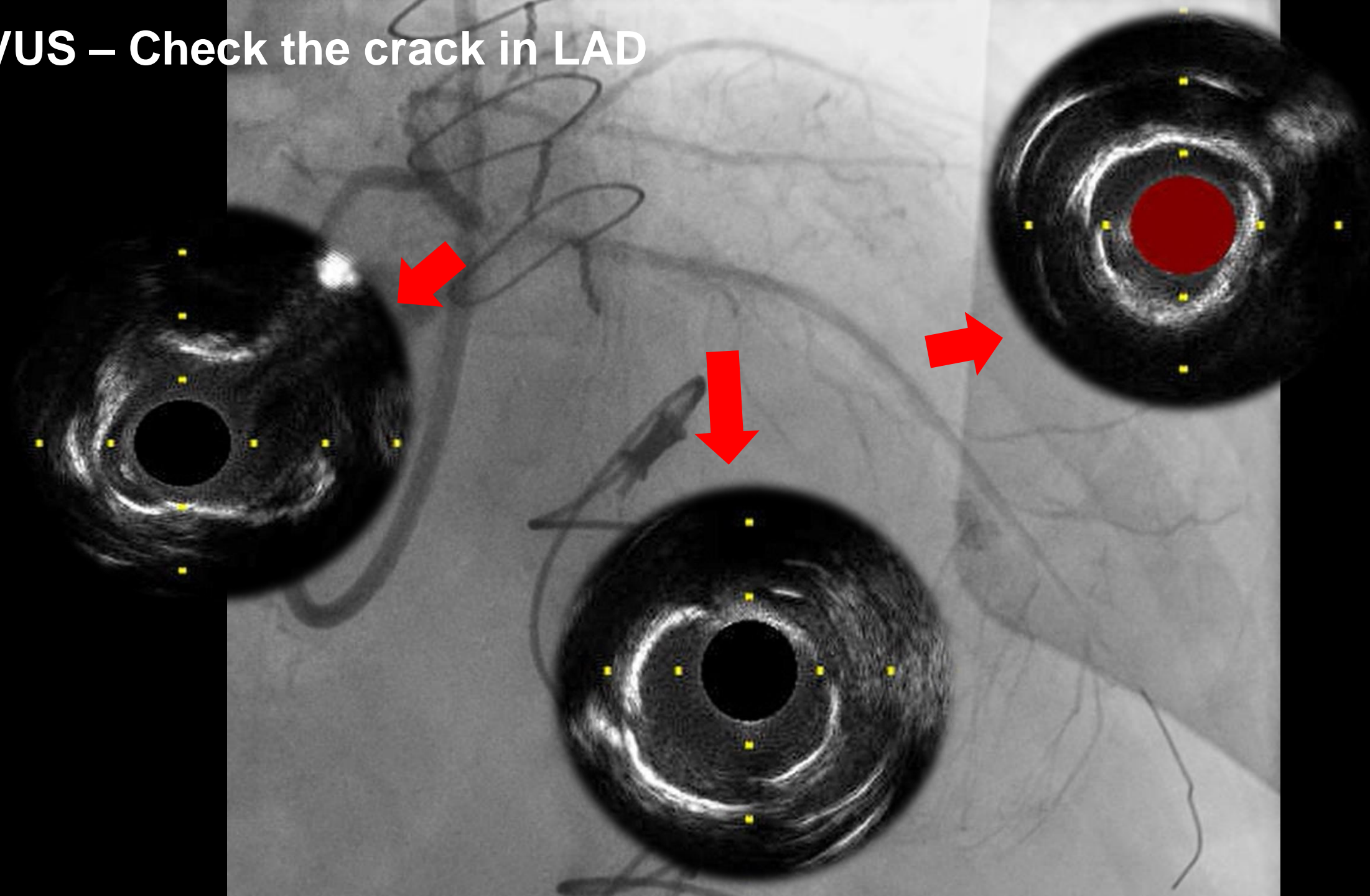


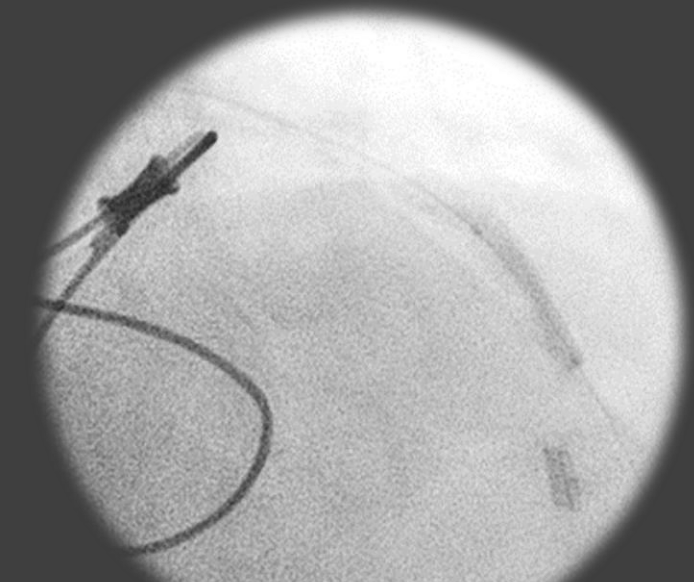
Burr size up

Burr 1.5mm

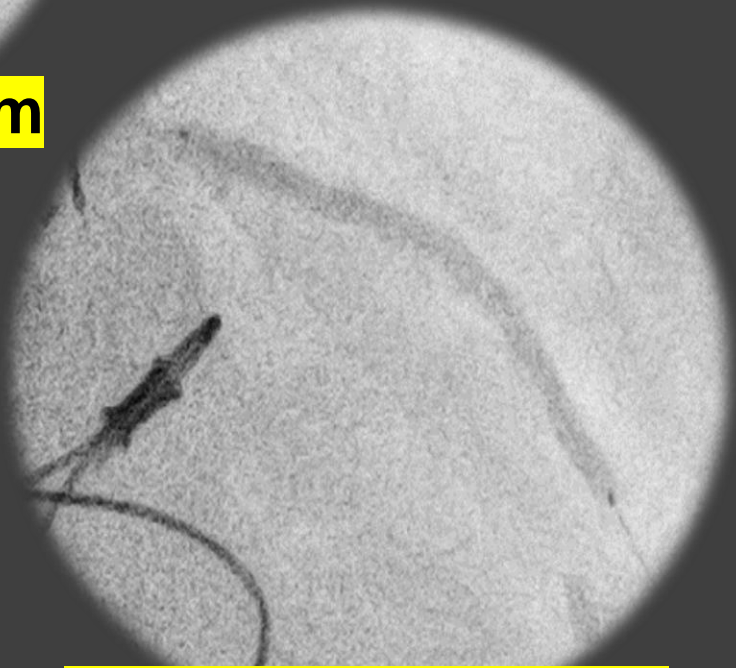


IVUS – Check the crack in LAD

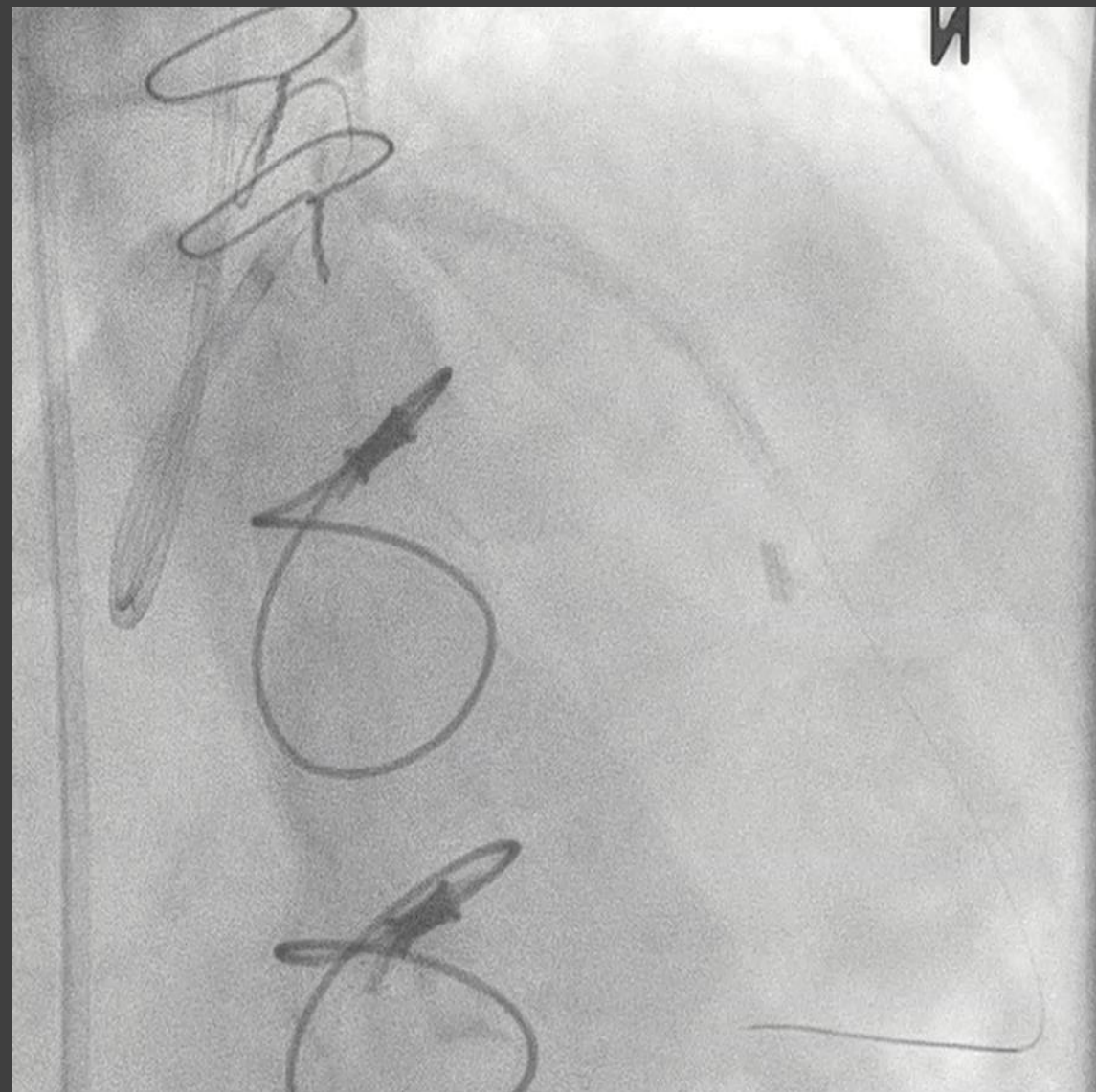


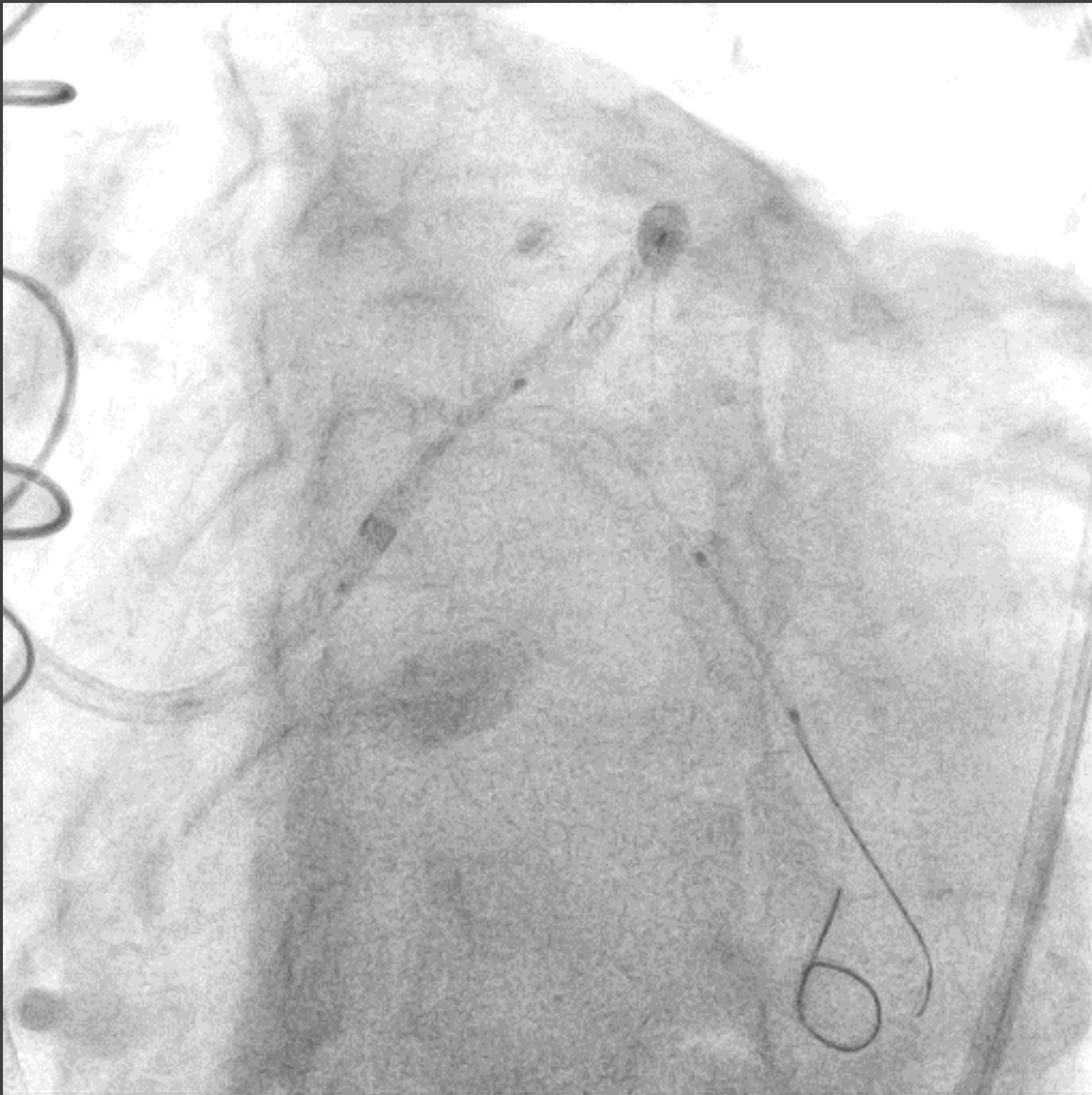


Traveler 2.5*15mm



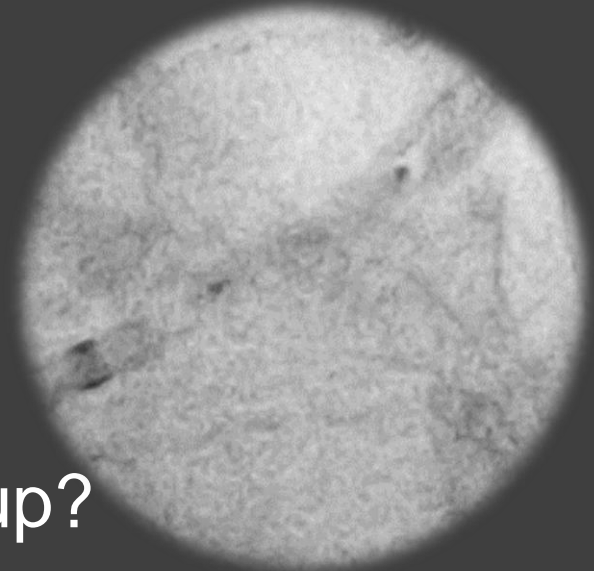
Synergy 2.75*48mm



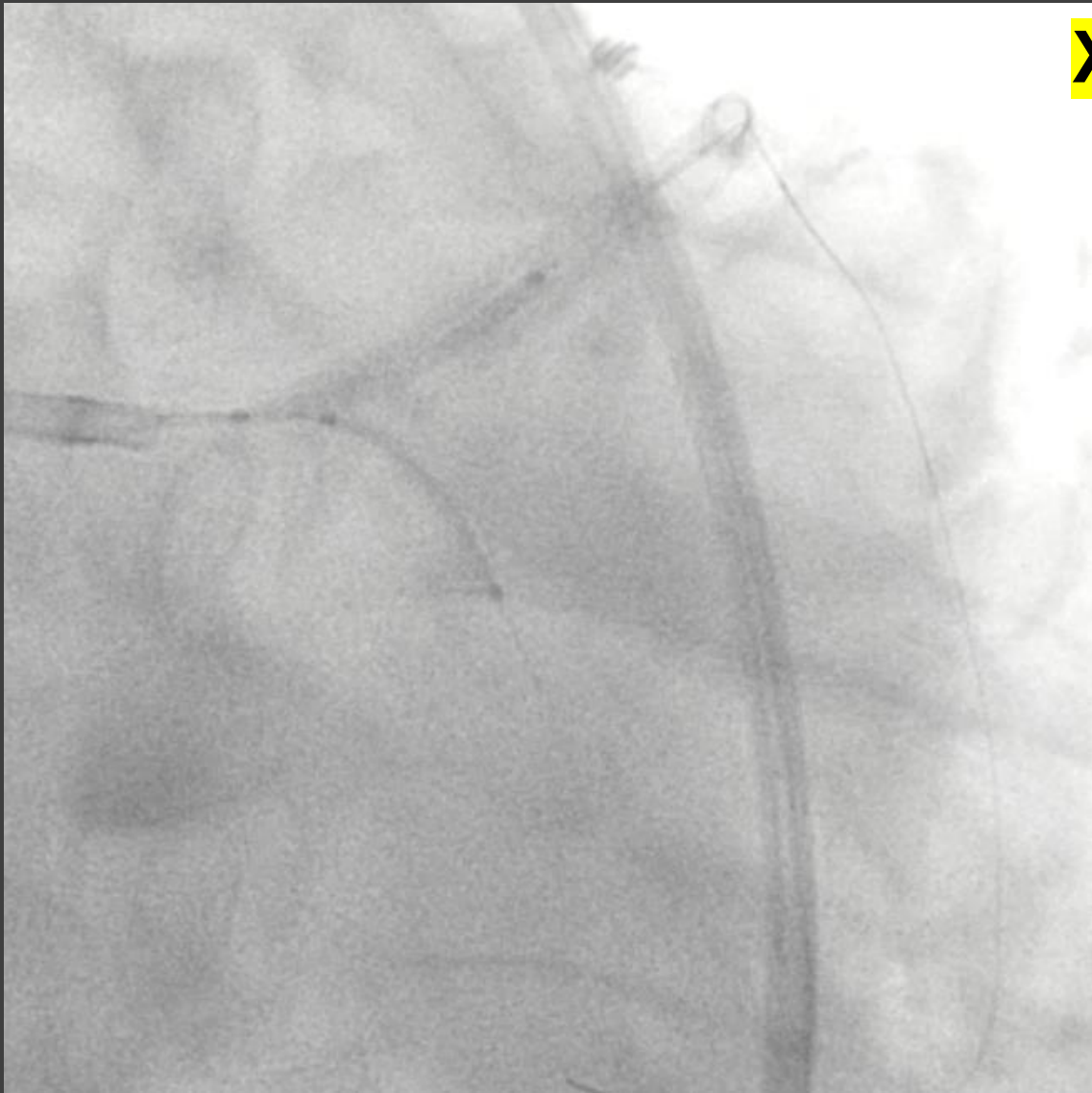


•What if

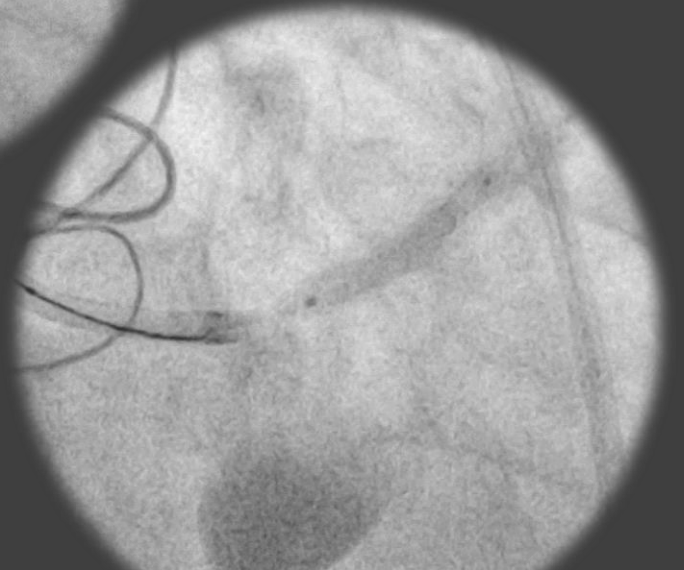
- ✓ Guideziller?
- ✓ Anker balloon?
- ✓ More PTCA?
- ✓ Buddy wire?
- ✓ Rota burr size up?
- ✓ Procedure finish > Med?



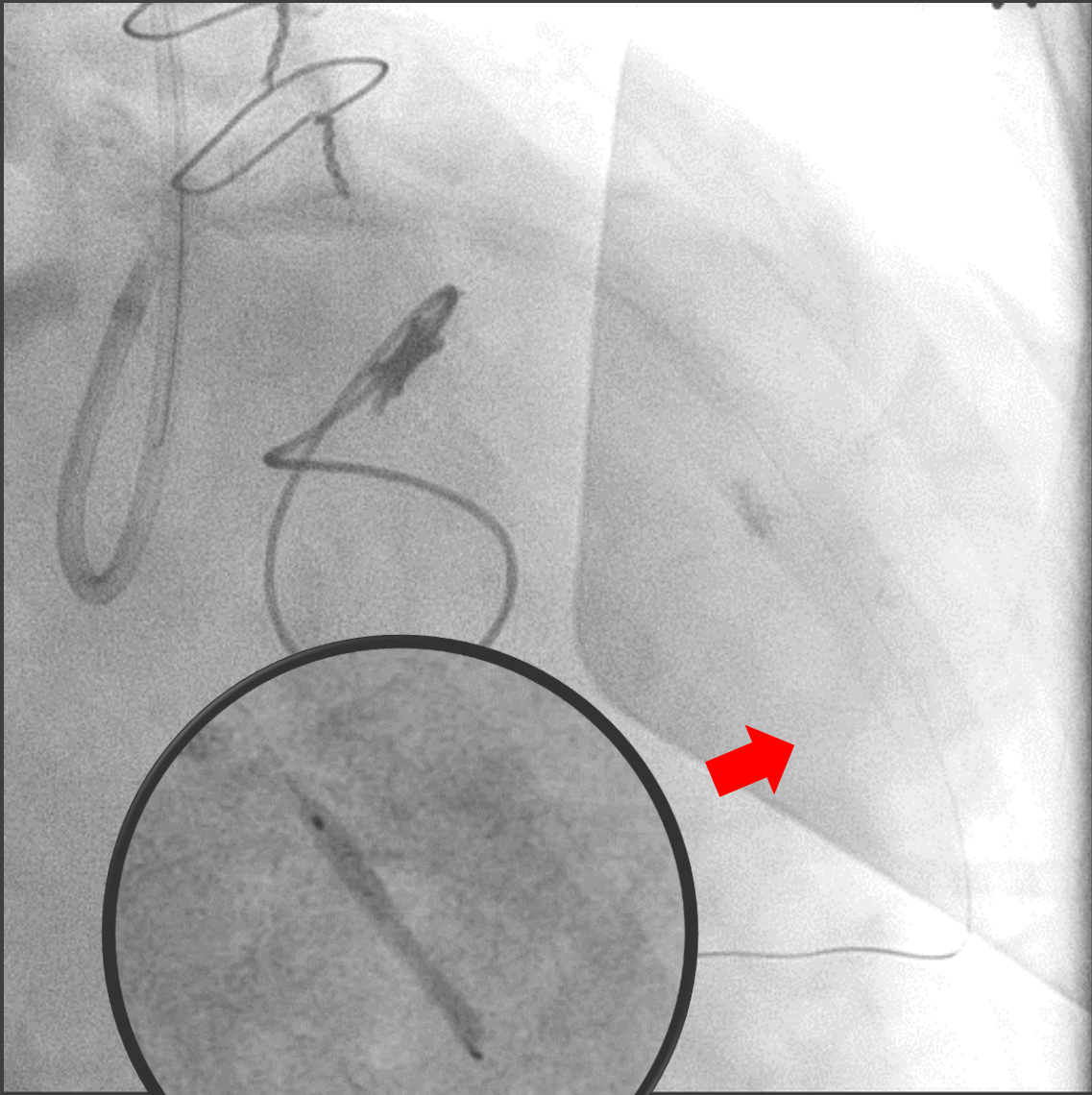
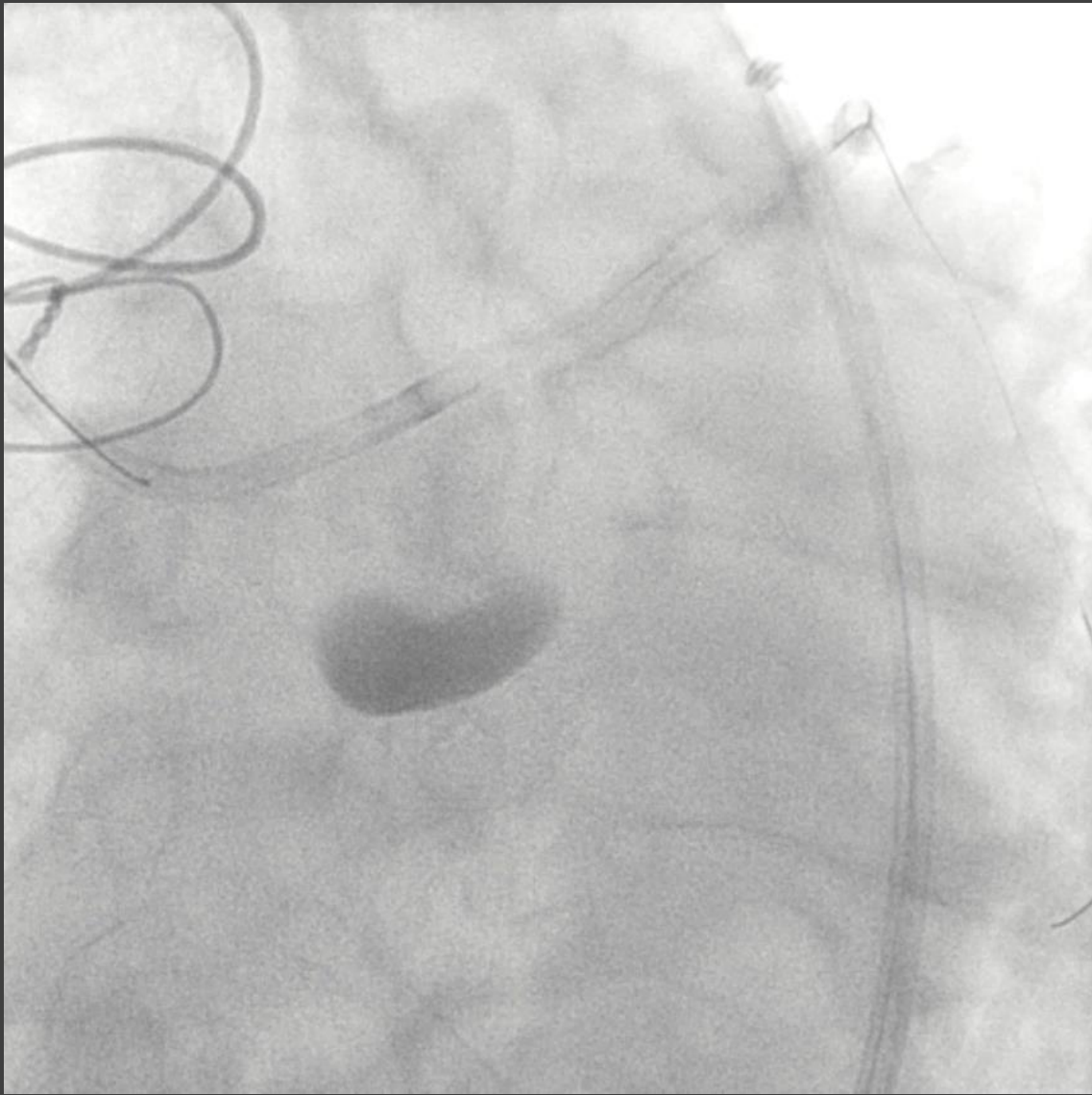
Xience Sierra 3.0*15mm



Mini crush

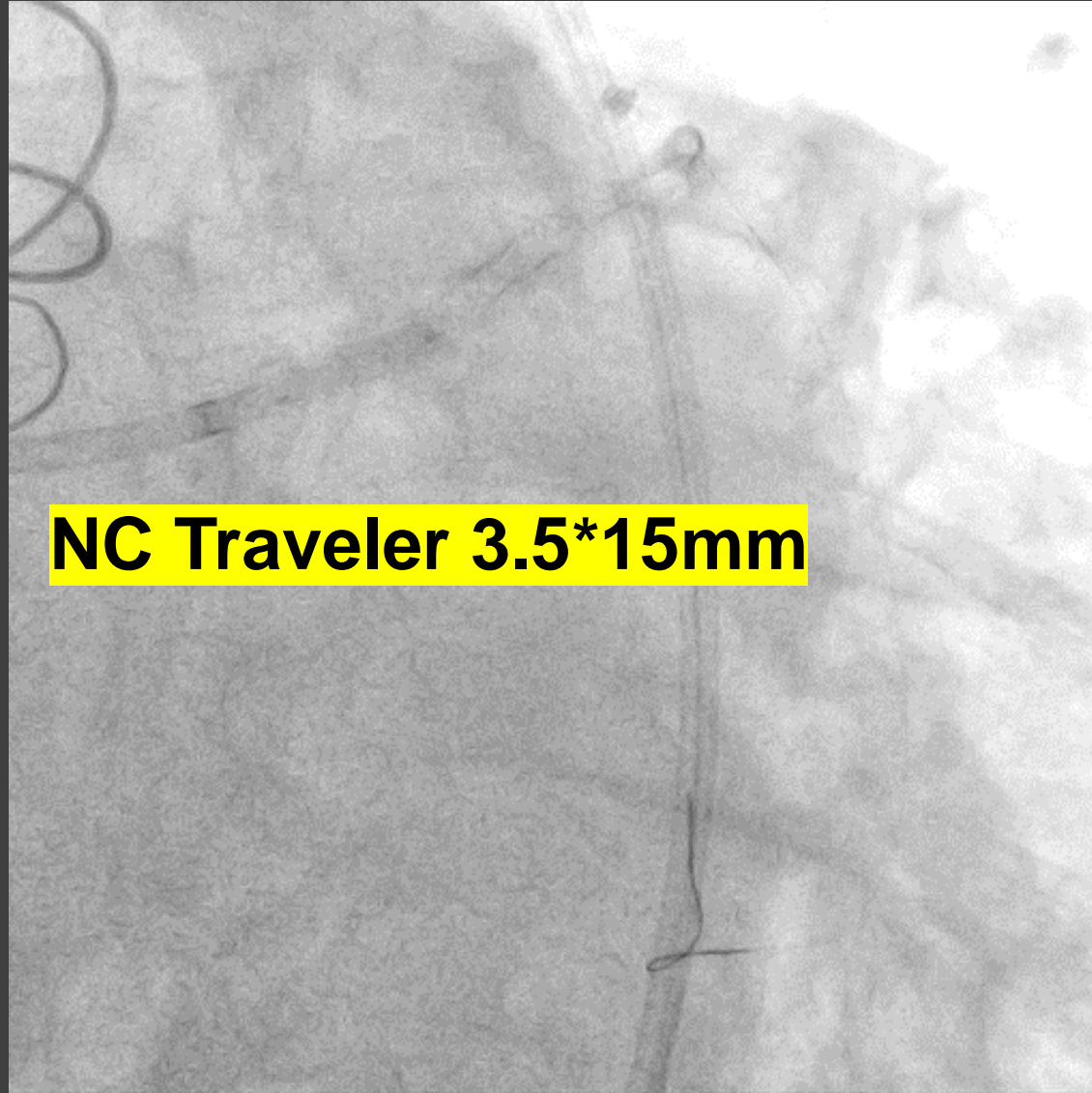


Xience Sierra 3.5*23mm



Orsiro 2.5*22mm

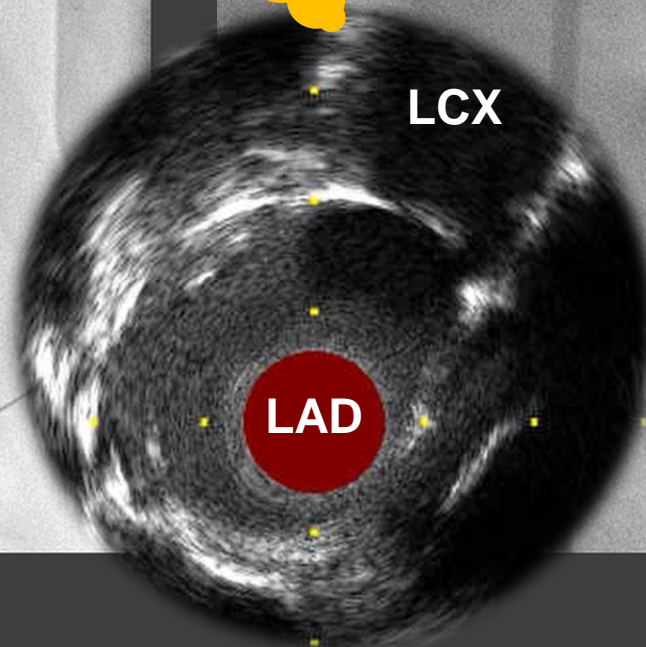
We doing Post dilatation & POT!



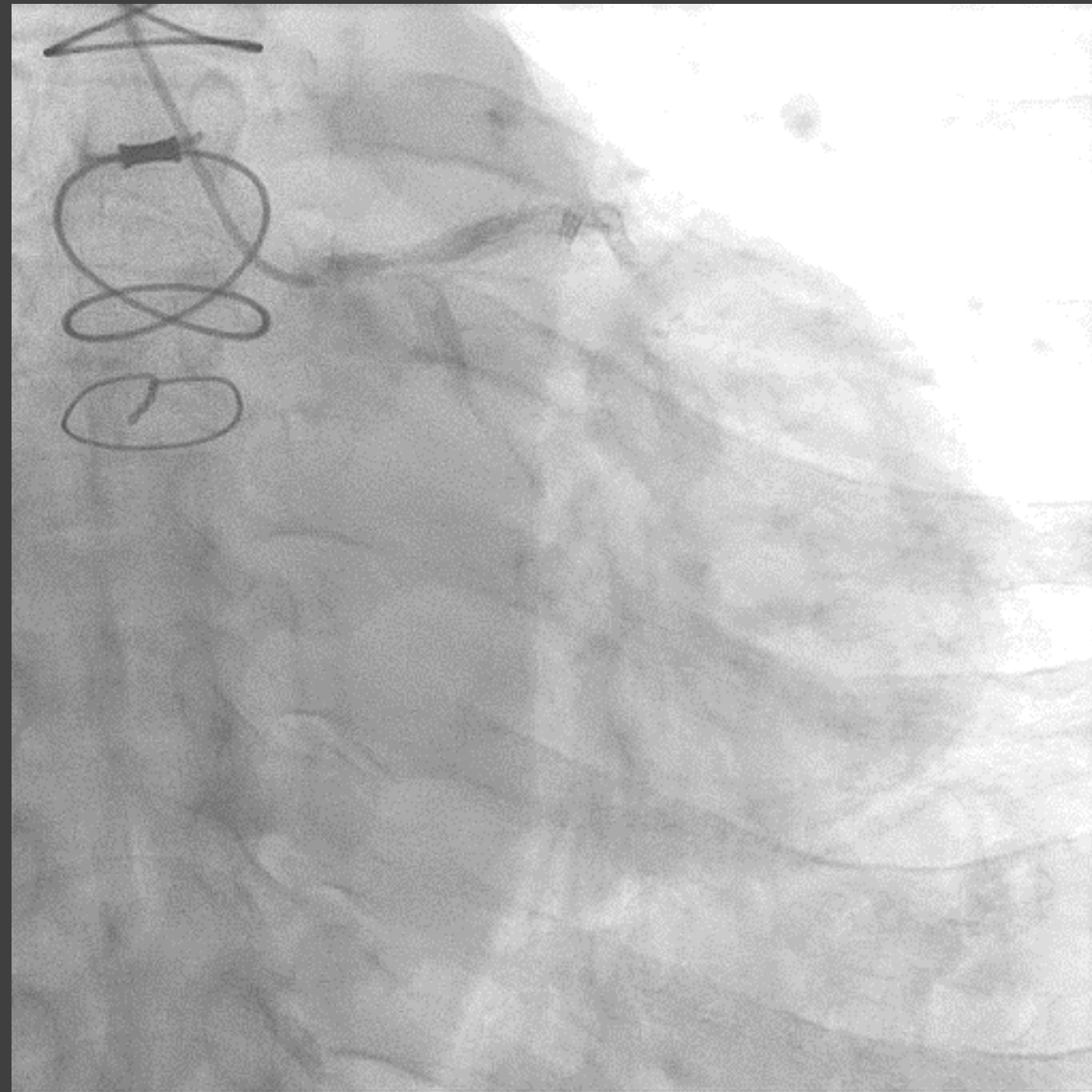
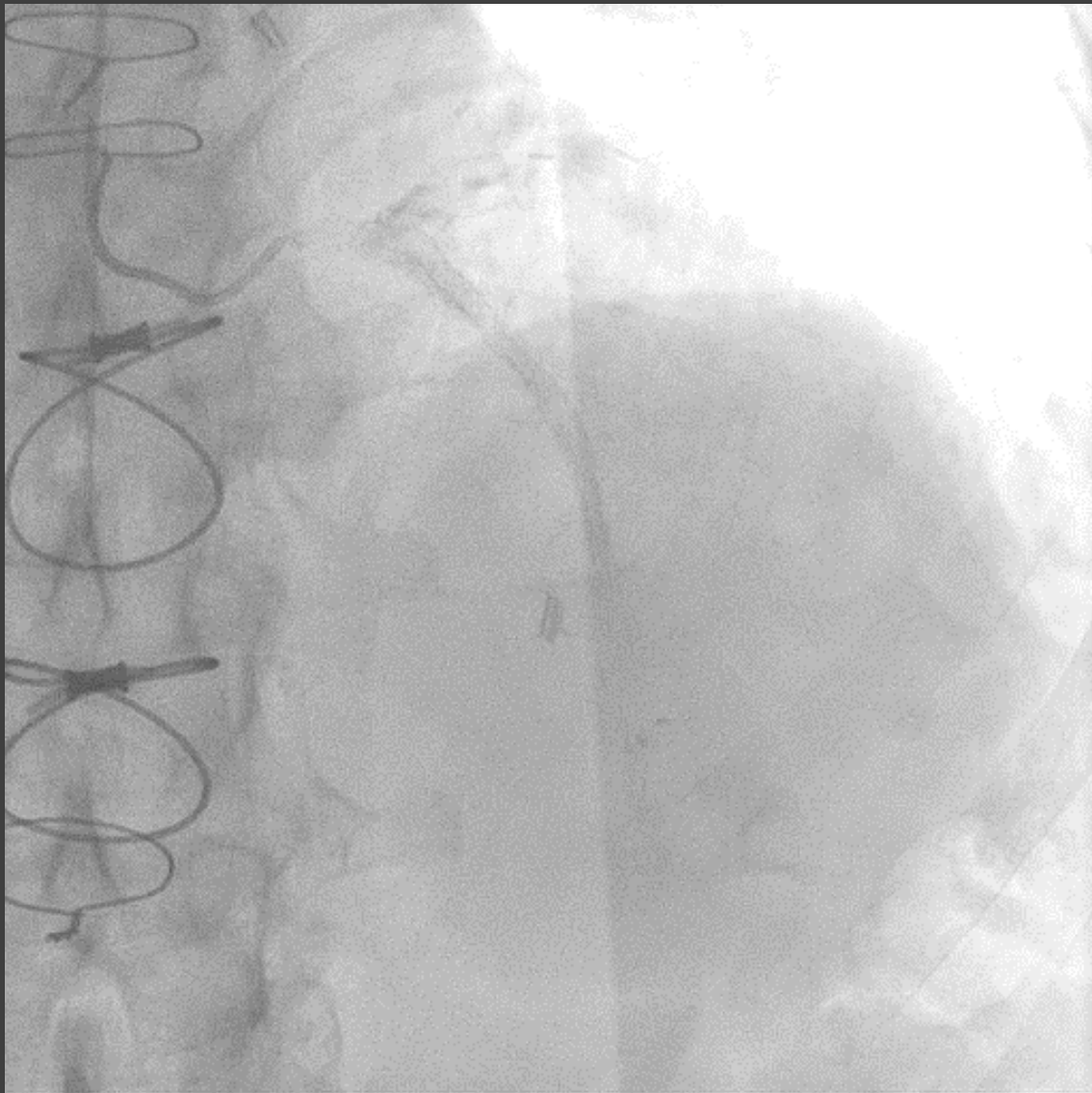
NC Traveler 3.5*15mm

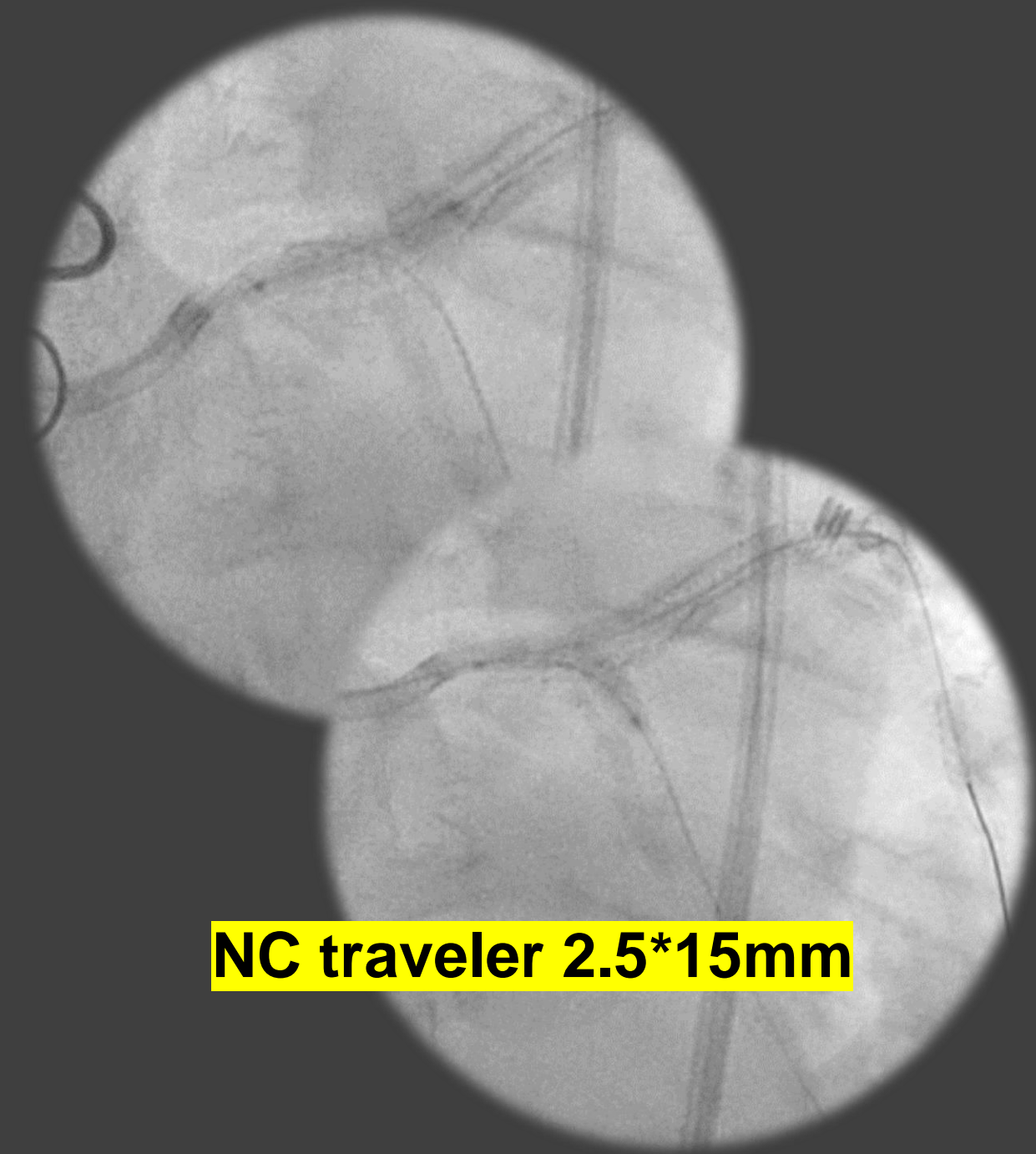
FINAL? ANGIORAPHY

**Final kissing balloon?
Side branch OPEN?**

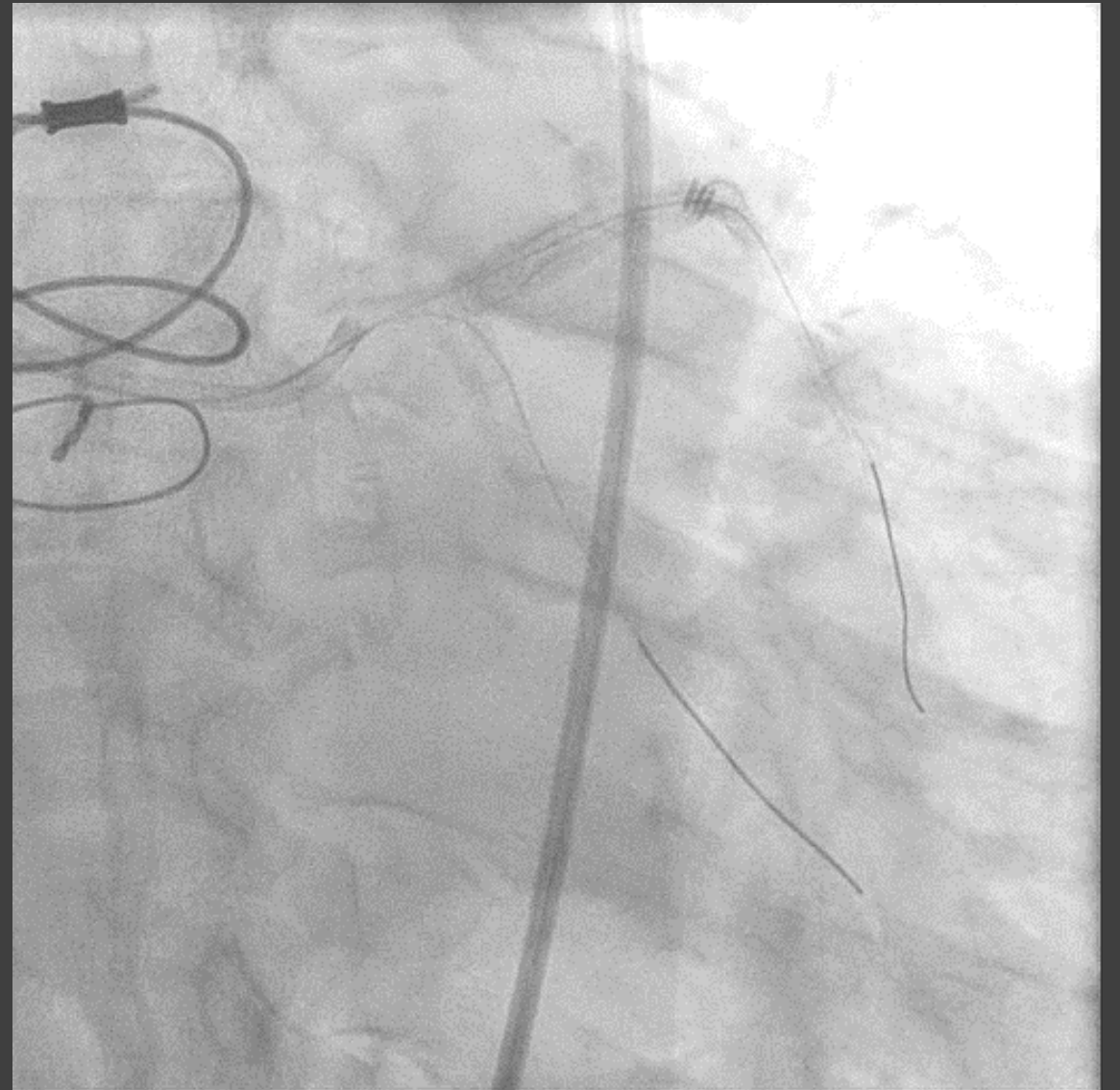


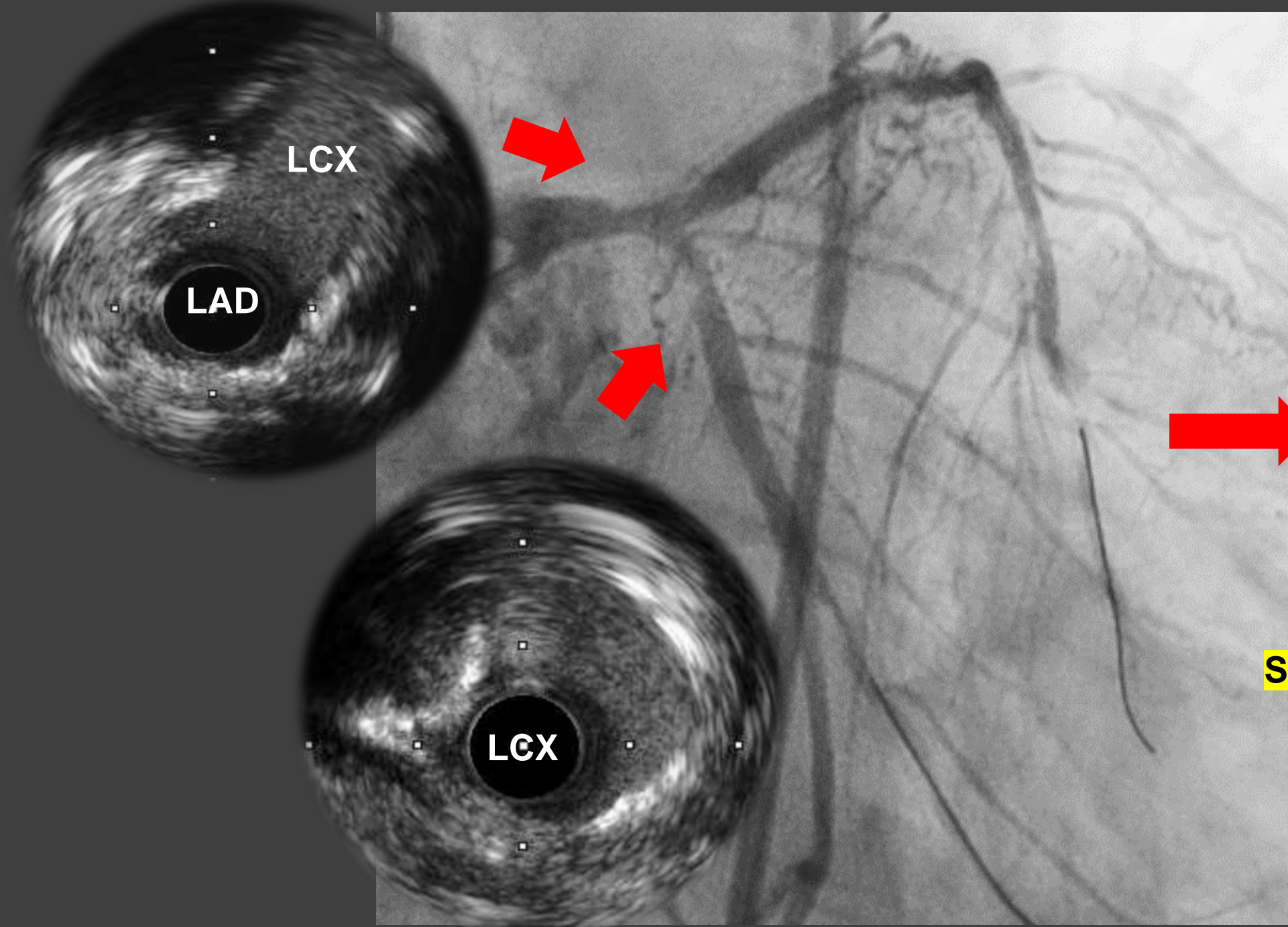
8Month F/U CAG





NC traveler 2.5*15mm



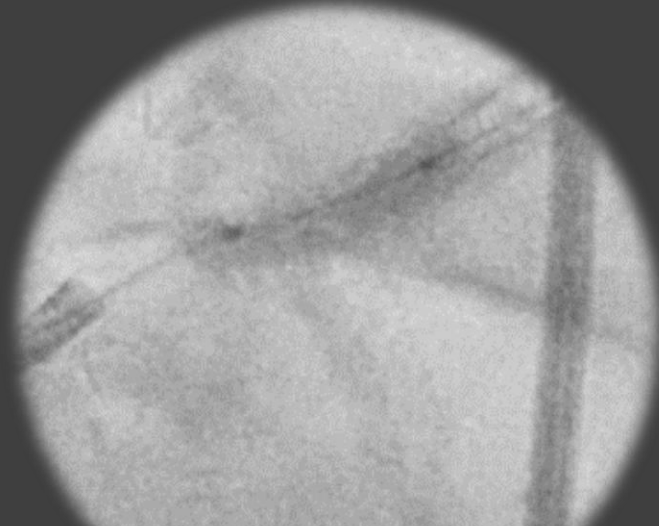


LCX

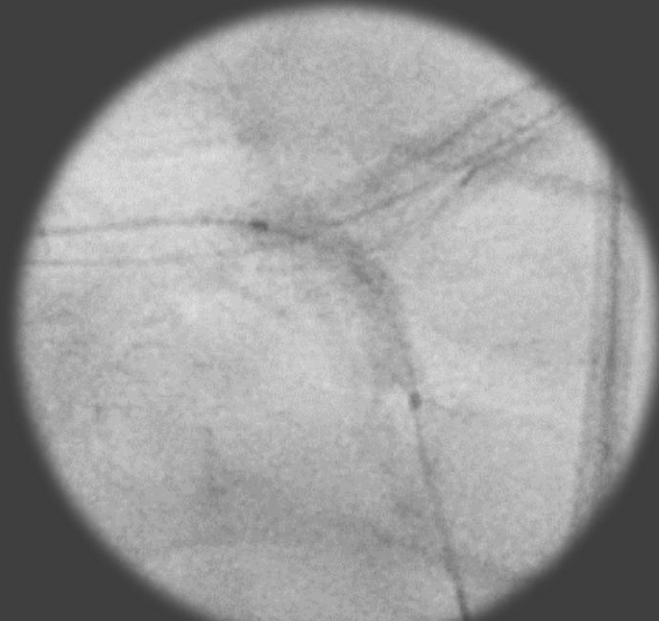
LAD

LCX

**SEQUENT PLEASE NEO
2.5*15mm**



NSE alpha 3.5*13mm



NC Traveler 3*12mm

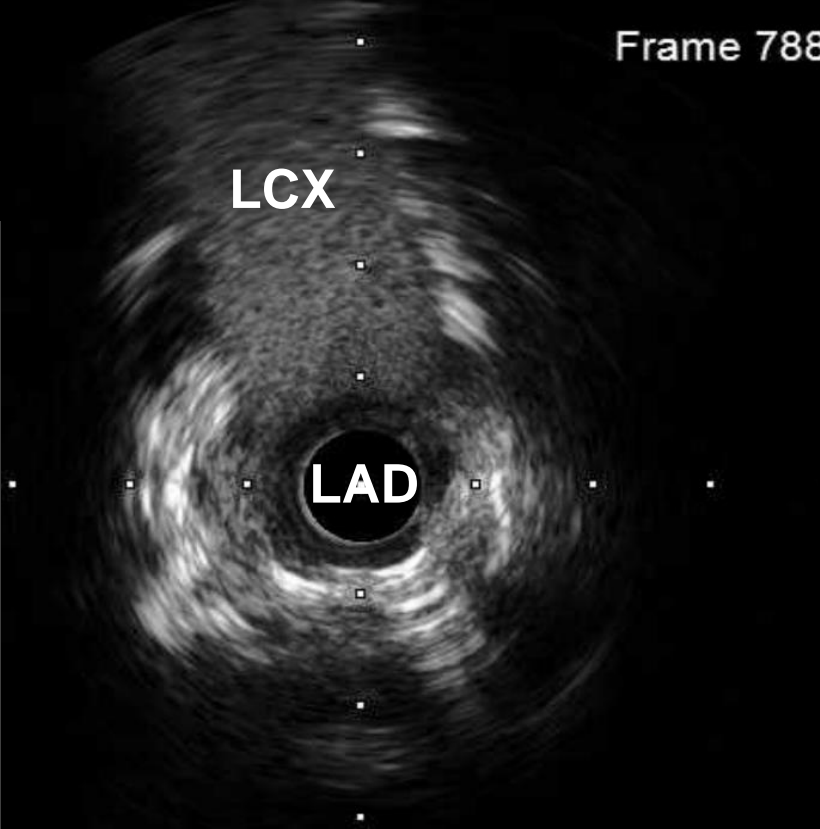


SEQUENT PLEASE NEO
3.5*25mm

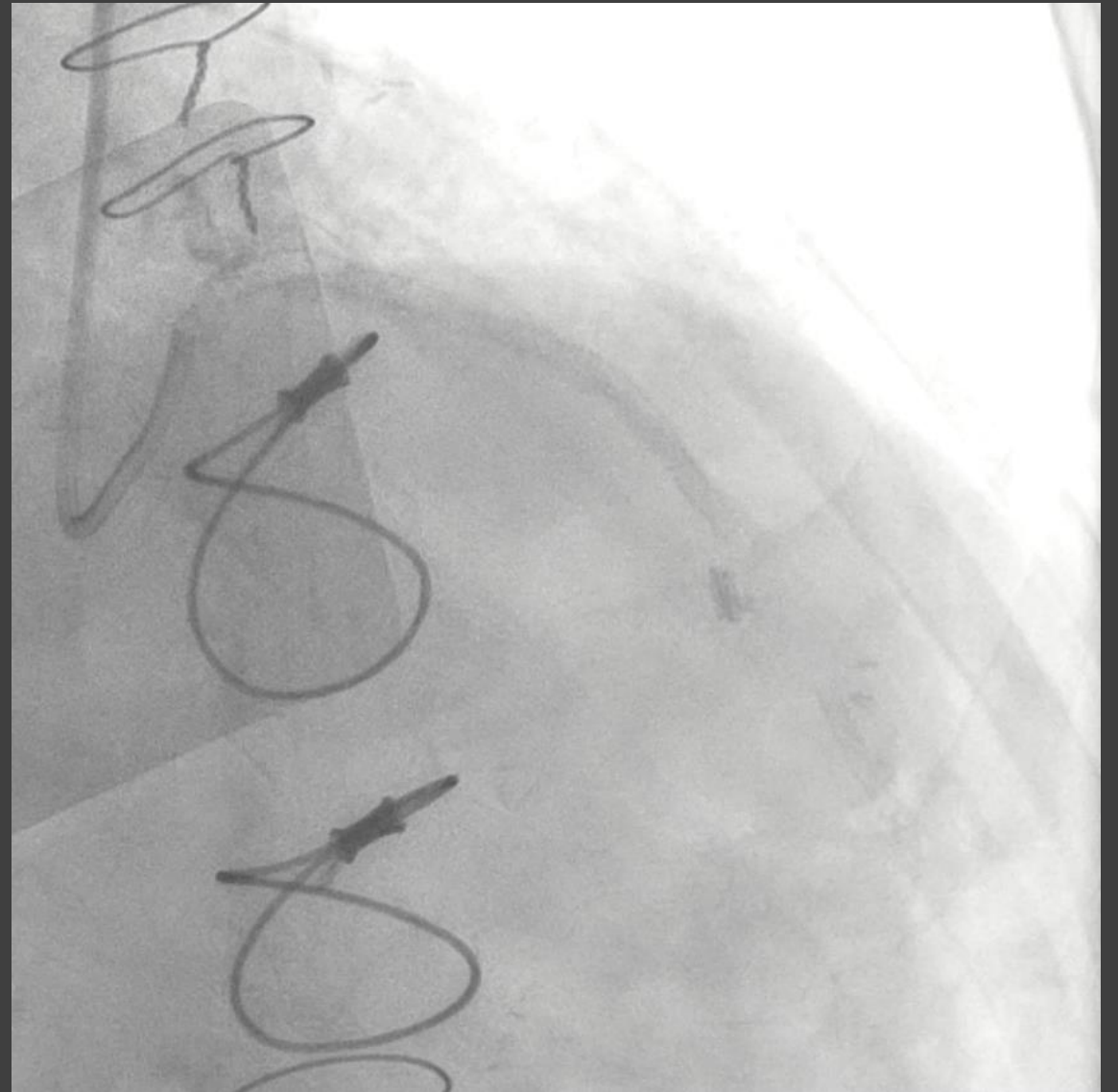
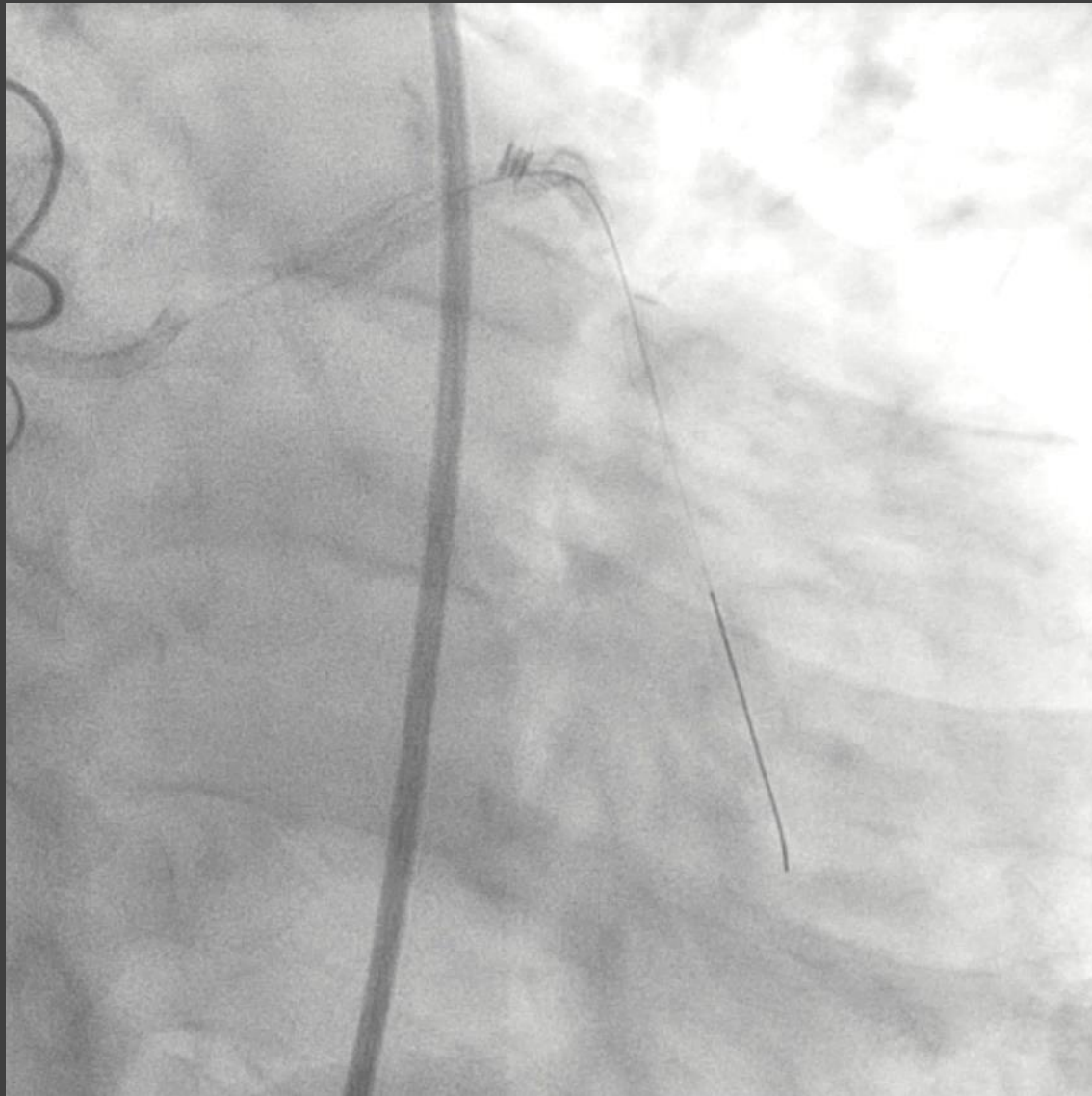


Frame 788

SEQUENT PLEASE NEO
3*15mm



FINAL ANGIORAPHY



Conclusion

- ✓ Important Final kissing is less stent thrombosis & TLR rate
- ✓ Image device is the best option to predict ISR
- ✓ Intracoronary evaluation(Image or Physiology) would be useful
- ✓ It is not difference between provisional one stent / LM two stent
(We consider of the SB DCB)