



---

# Three Year Follow-Up of the FAME 3 Trial

---

William F. Fearon, MD

Professor of Medicine

Chief, Interventional Cardiology

Stanford University School of Medicine

Chief, Cardiology Section

VA Palo Alto Health Care System

---



# Disclosures

*Within the past 12 months, I or my spouse/partner have had a financial interest/arrangement or affiliation with the organization(s) listed below.*

## Affiliation/Financial Relationship

Grant/Research Support

Consulting Fees/Stock Options

Major Stock Shareholder/Equity

Royalty Income

Ownership/Founder

Intellectual Property Rights

Other Financial Benefit

## Company

Abbott, Medtronic

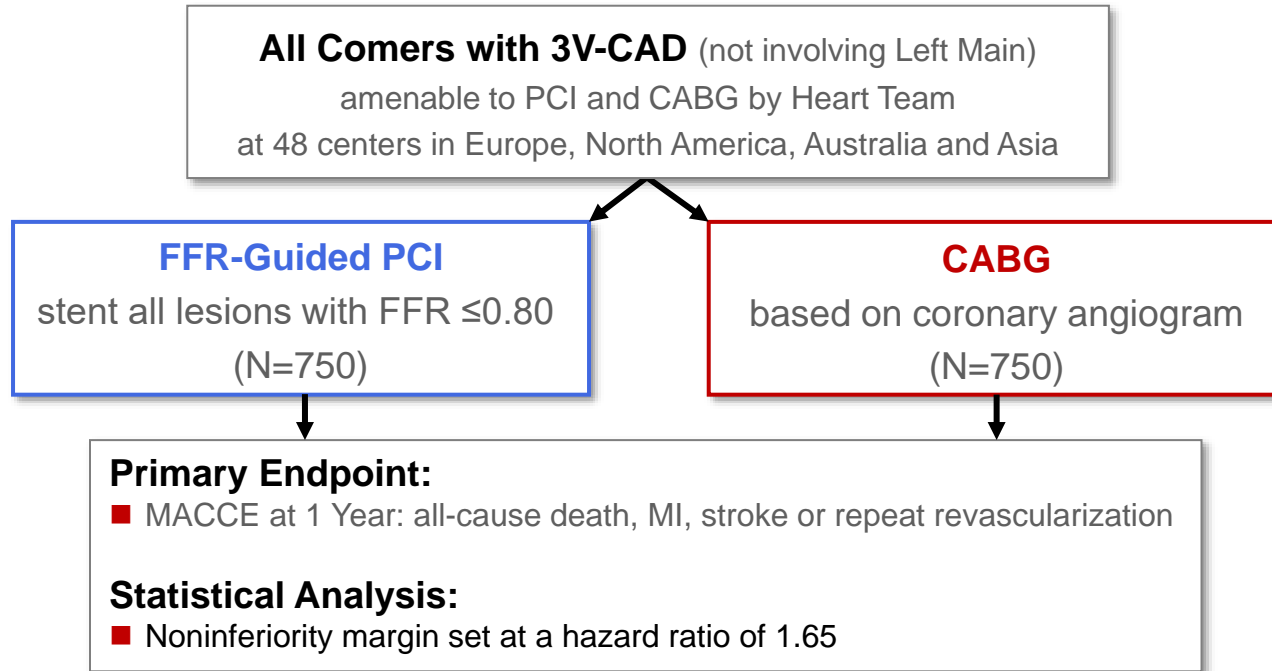
NIH R61 HL139929-01A1 (PI)

CathWorks (previous), HeartFlow

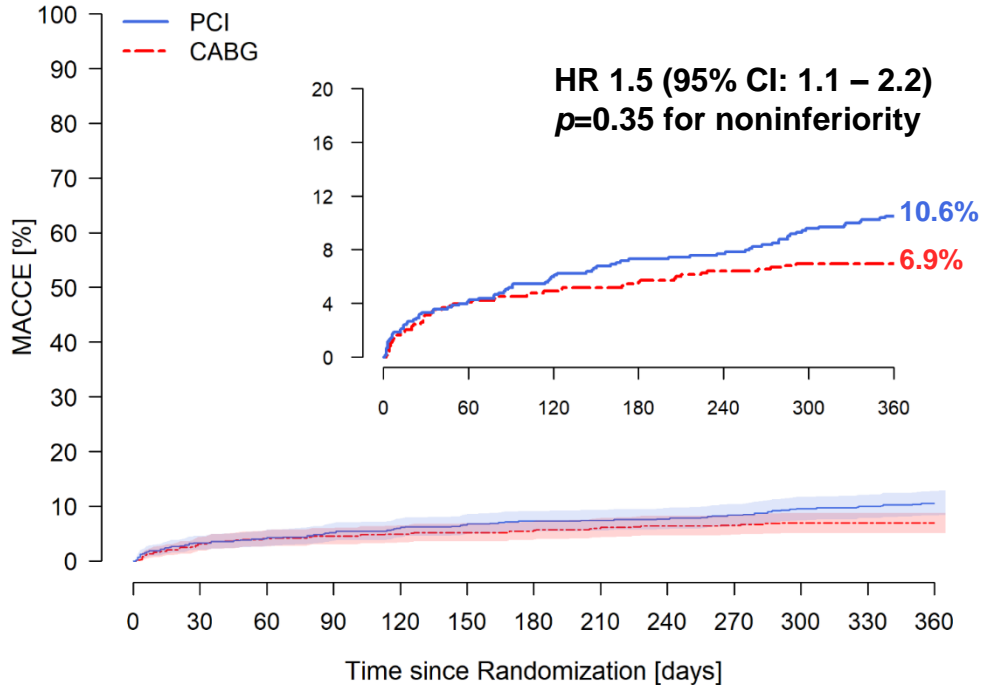


# FAME 3: *Study Design*

**Investigator-initiated, multicenter, randomized, controlled study**



# FAME 3: Primary Endpoint



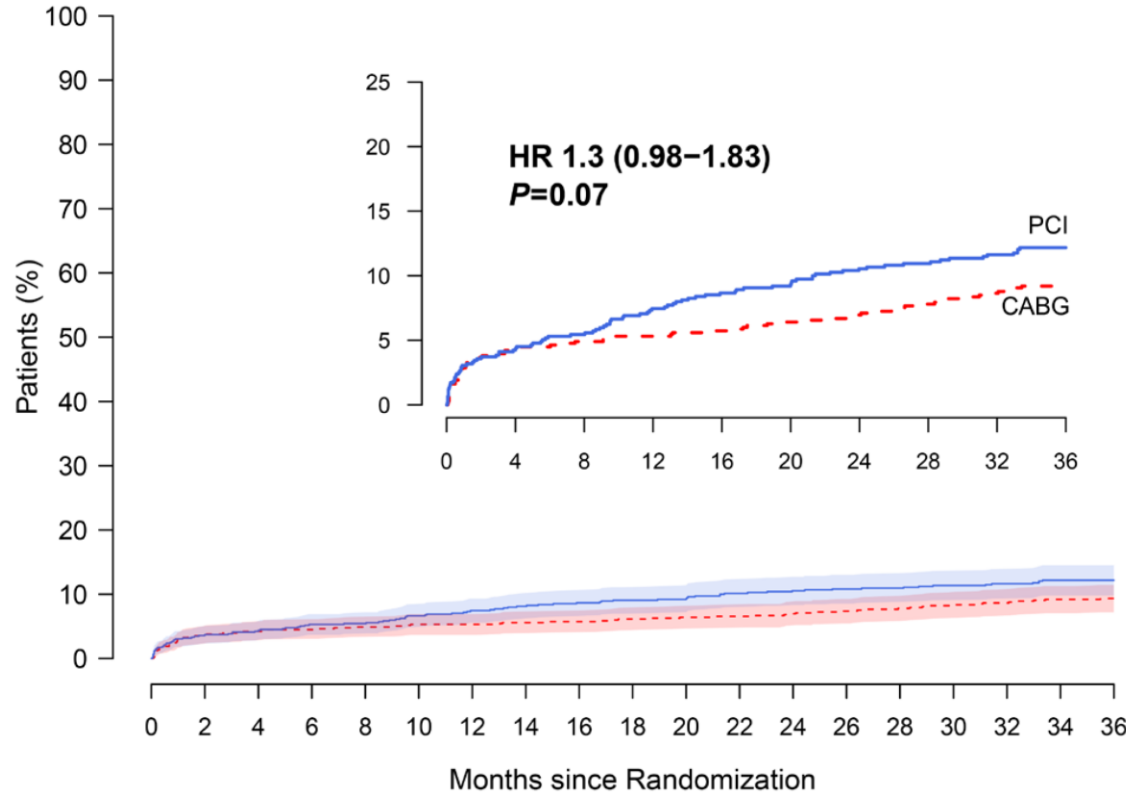
**MACCE (Death, MI, stroke or repeat revascularization) at 1 Year**

	No. at Risk												
PCI	757	728	721	713	707	702	697	696	693	687	678	674	670
CABG	743	709	701	698	695	693	691	686	683	682	679	679	679



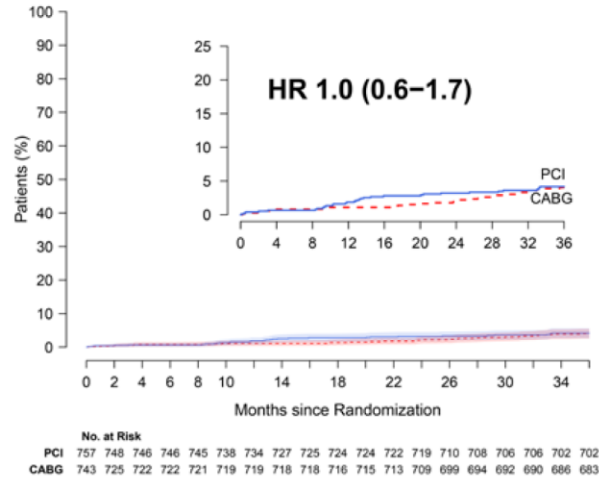
# FAME 3: *Three-Year Outcomes*

Death, MI, or stroke at 3 Years

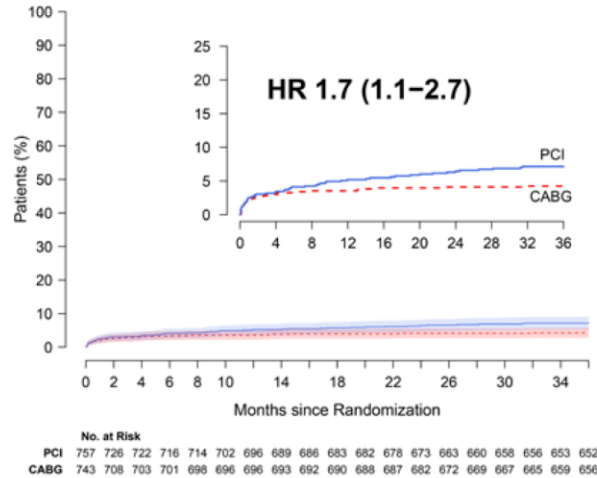


# FAME 3: Three-Year Outcomes

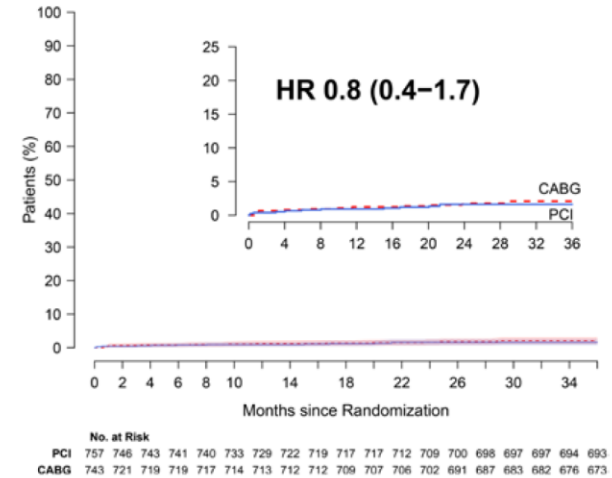
## Death from any cause



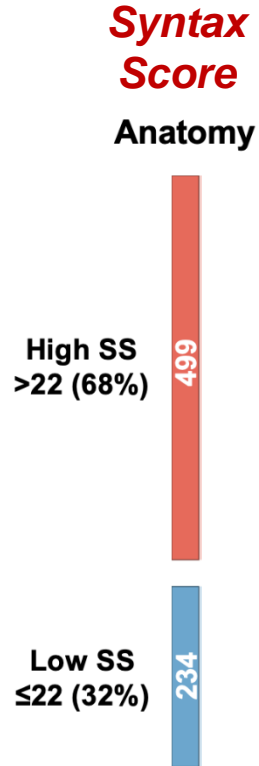
## Myocardial infarction



## Stroke



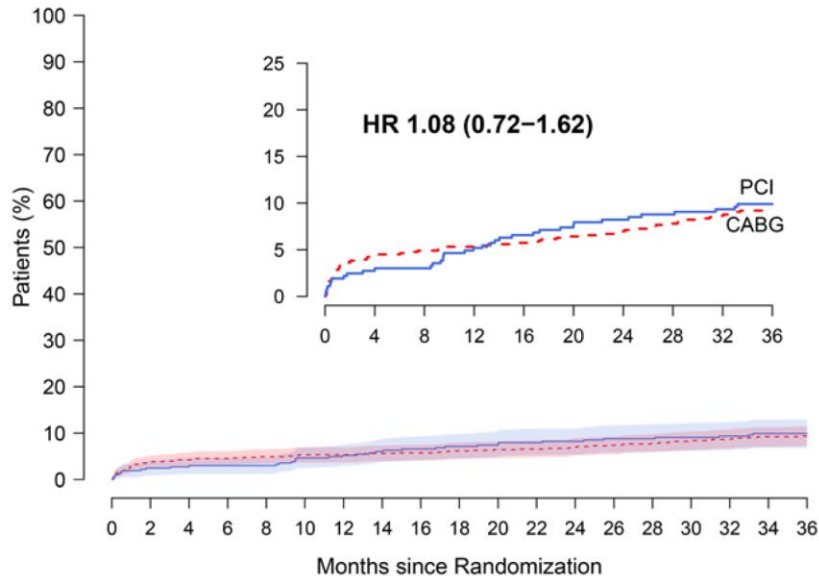
# Reclassification with FFR Information



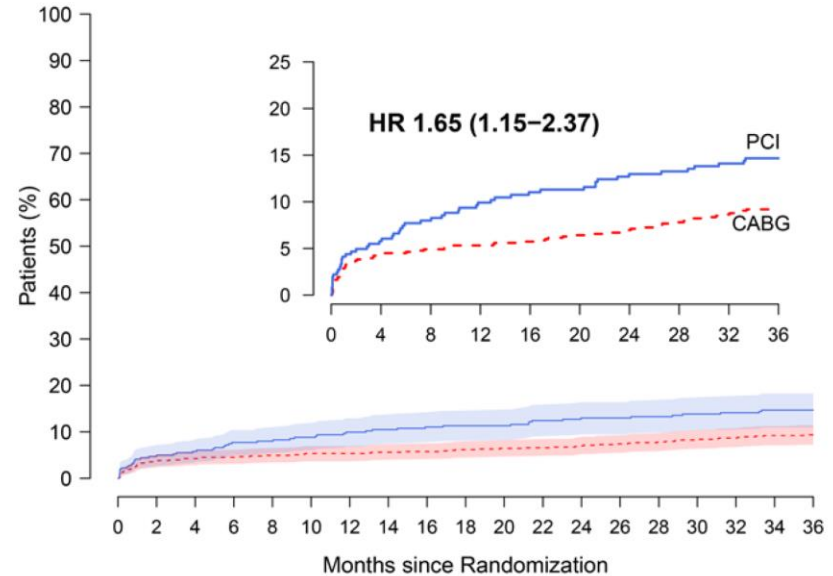
# Death, MI or Stroke at 3 Years Based on FSS

**50% of PCI patients had a low Functional SYNTAX Score**

PCI patients with FSS  $\leq 22$  vs. CABG



PCI patients with FSS  $> 22$  vs. CABG



	No. at Risk																		
PCI	368	357	356	355	347	345	342	340	337	336	334	332	326	326	325	324	322	322	
CABG	743	704	700	698	694	691	691	688	687	684	682	681	676	665	661	657	655	651	648

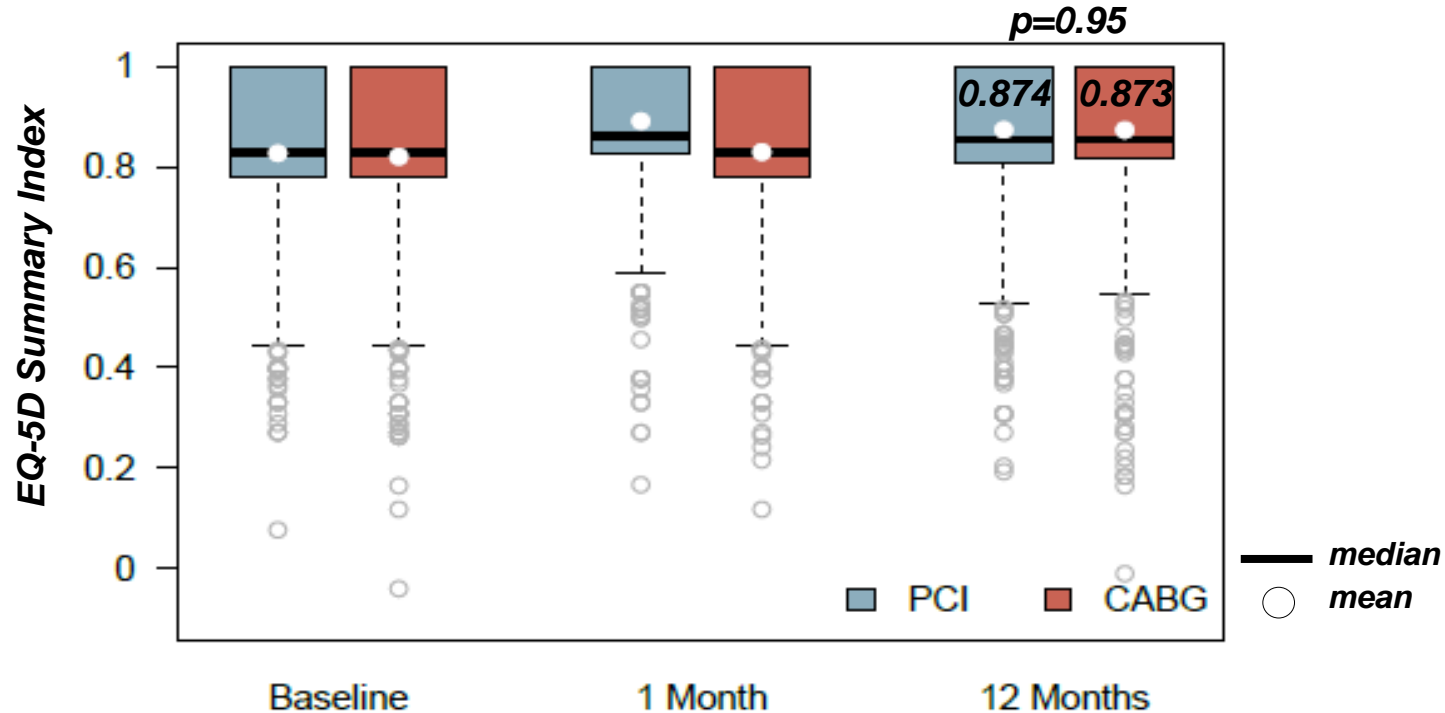
	No. at Risk																		
PCI	365	346	342	335	333	330	326	322	320	319	319	315	312	309	306	304	303	301	301
CABG	743	704	700	698	694	691	691	688	687	684	682	681	676	665	661	657	655	651	648





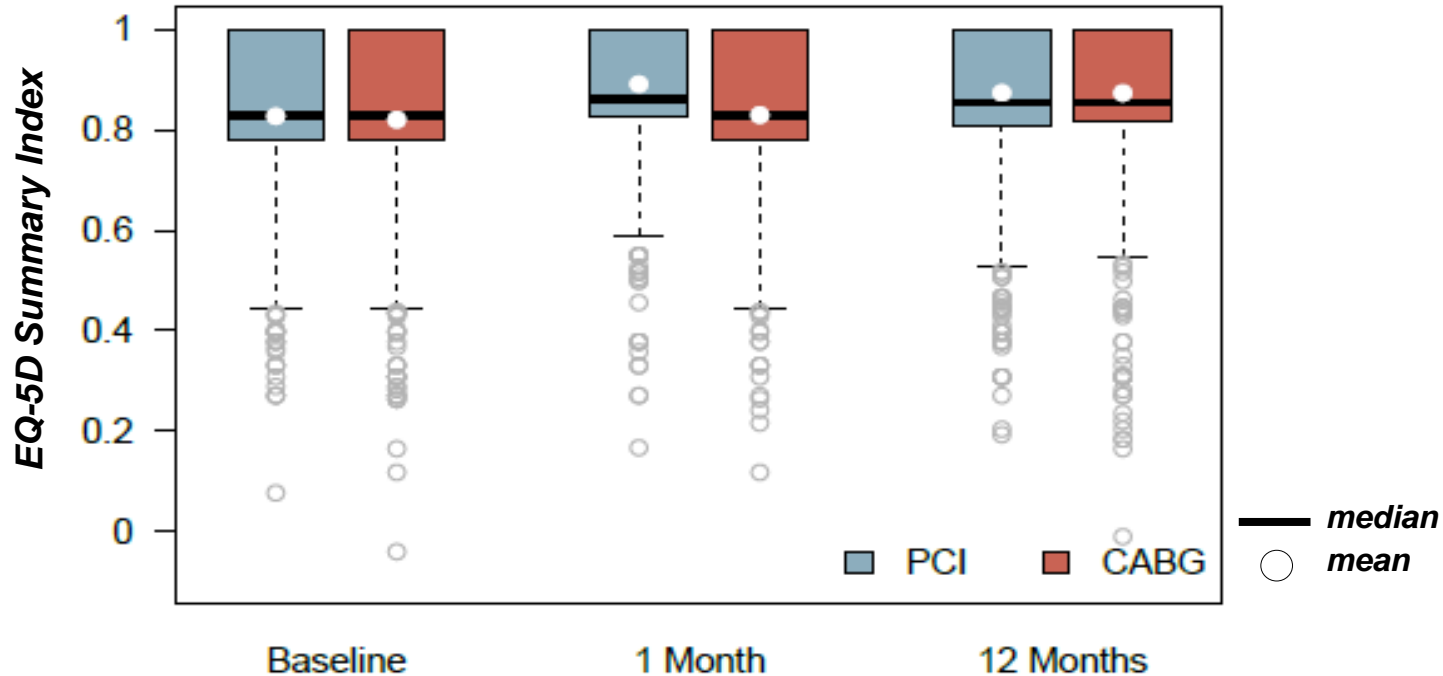
# FAME 3 Quality of Life

**Primary Endpoint: EQ-5D Summary Score at 1 year**



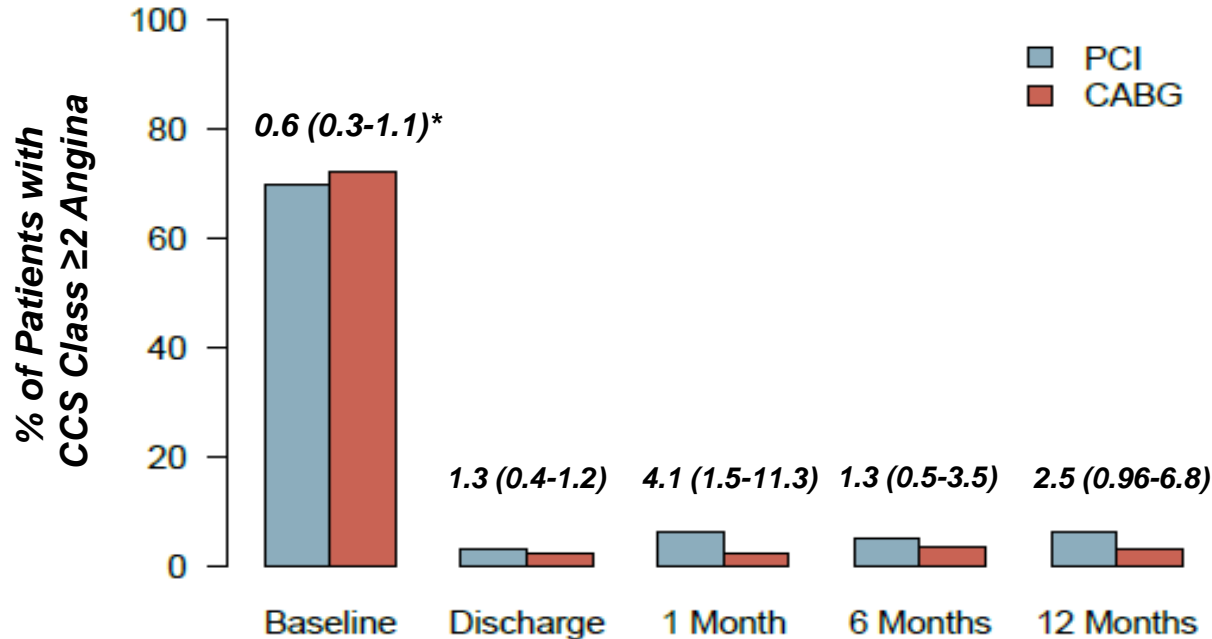
# FAME 3 Quality of Life

***P<0.001 for the trajectory of improvement in EQ-5D Summary Index favoring FFR-Guided PCI***

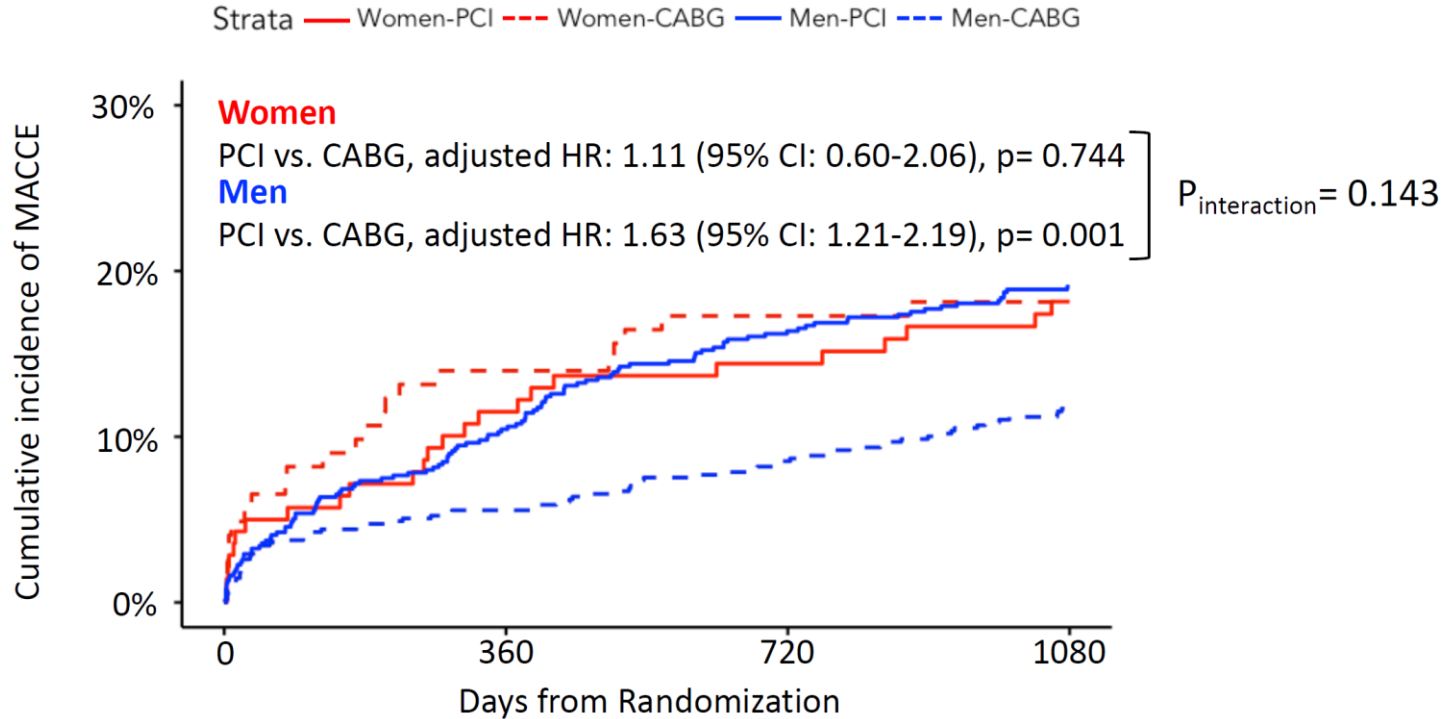


# FAME 3 Quality of Life

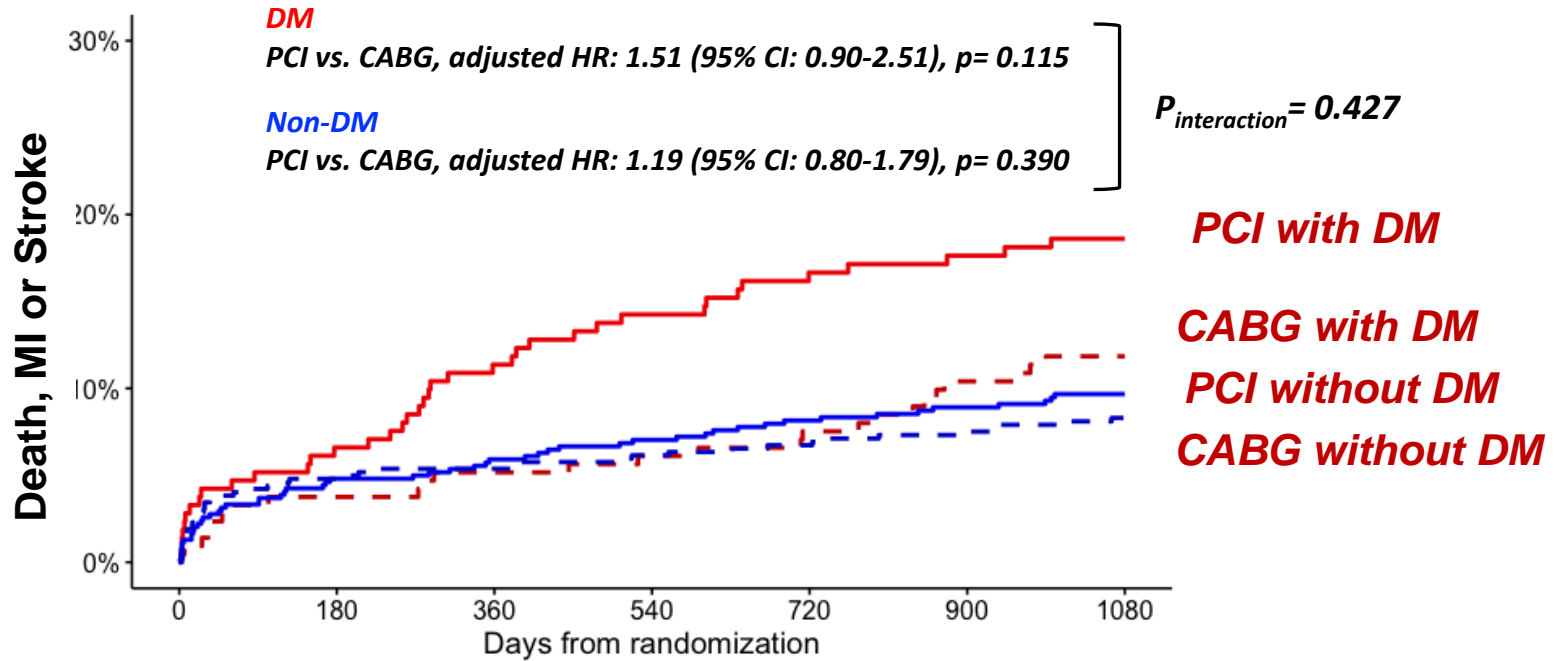
**% of Patients with CCS Class  $\geq$  2 Angina at Each Time Point**



# FAME 3 and Women



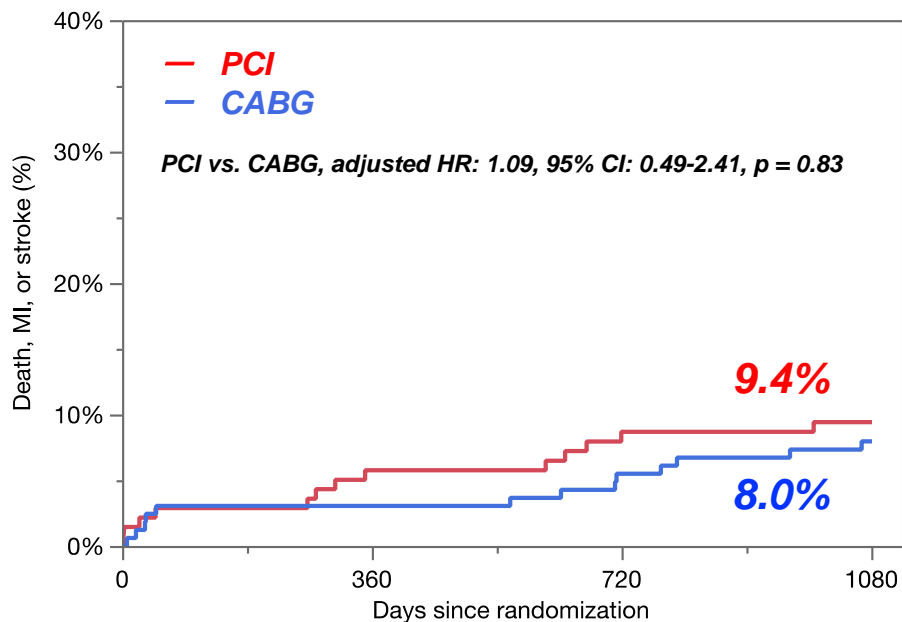
# FAME 3 and Diabetes



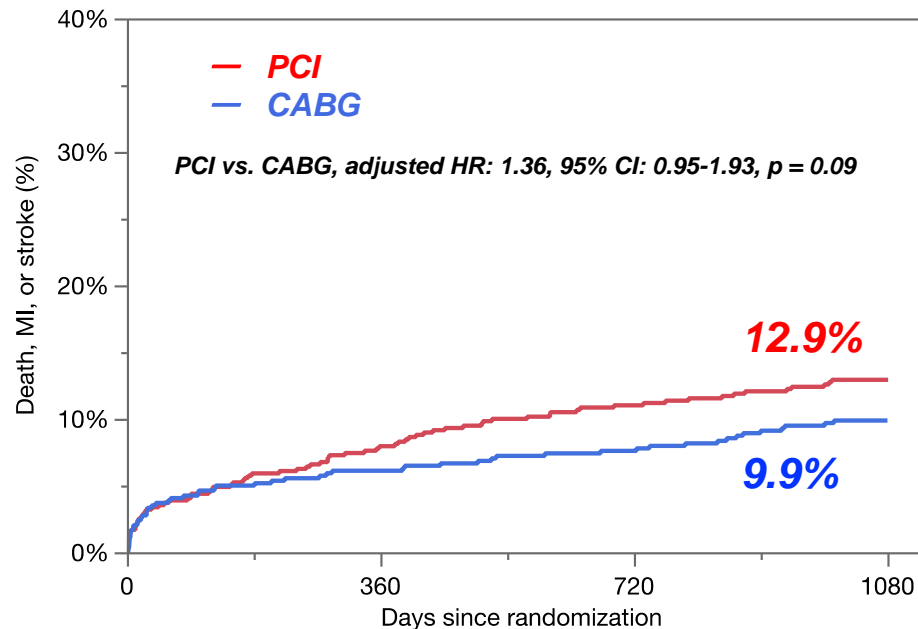
# FAME 3 and Chronic Total Occlusion

$P_{interaction} = 0.69$

## Patients with CTO

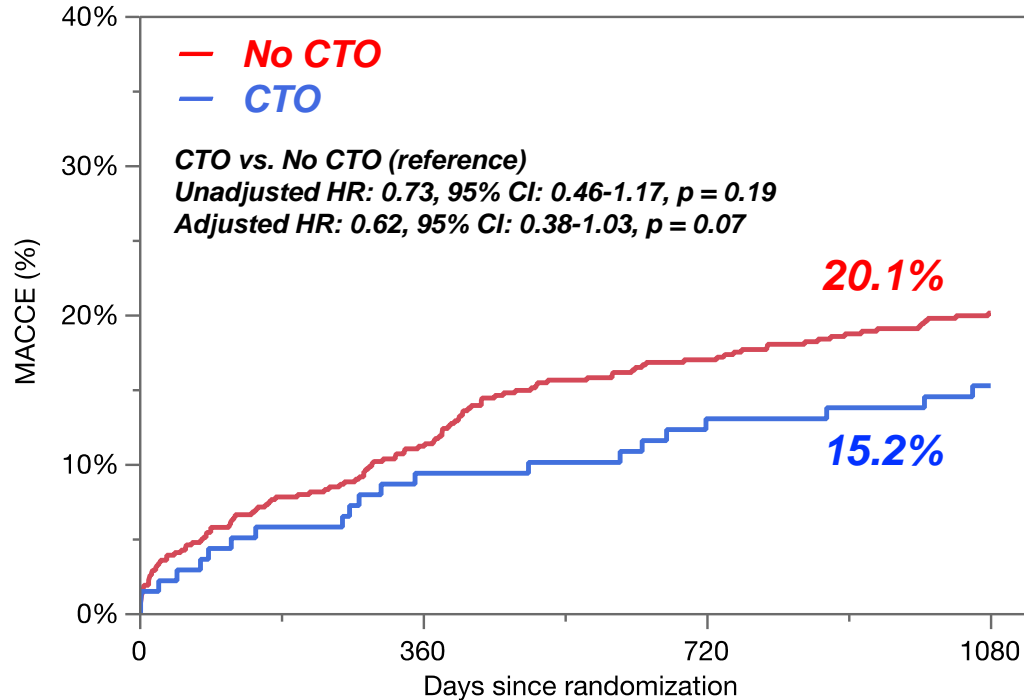


## Patients without CTO



# FAME 3 and Chronic Total Occlusion

## PCI Patients



# FAME 3 and Chronic Total Occlusion

*Outcomes in patients assigned to PCI based on CTO status*

Endpoint	CTO (N=140)	No CTO (N=594)	Hazard Ratio (95% CI)	P Value
Death	7 (5.1)	24 (4.1)	0.93 (0.34-2.54)	0.89
MI	5 (3.7)	47 (8.1)	0.41 (0.16-1.08)	0.07
Stroke	1 (0.8)	10 (1.7)	0.58 (0.06-5.73)	0.64
Repeat Revascularization	12 (8.9)	71 (12.3)	0.57 (0.29-1.10)	0.09





# What is next for FAME 3?

## *FAME 3: Three Year Cost-Effectiveness of PCI vs. CABG*



*Presented by Frederik Zimmermann, MD, PhD*  
*Wednesday, May 15<sup>th</sup> at 9:13-9:19 am*  
*Paris, France*

