

CT Leads the Road to Success of CTO PCI

CCTI Conference

Best Performance of Cardiac CT

Working group

Department of Cardiology, Nozaki Tokushukai Hospital

Masaaki Okutsu

Is CTO segment visible in CAG?



?

?

Is CTO segment visible in CAG?



Ca
Best
?

ce
CT?
?

Why CTO PCI is difficult?

- Occluded segment tissue is hard to advancing guidewire.

- CTO segment is not visualized by CAG.

- Entry
- Route
- Vessel diameter

It is visible in CT what is invisible in CAG !

- Occluded vessel route
- Occluded vessel diameter
- Entry point of CTO
- Calcium distribution



Route

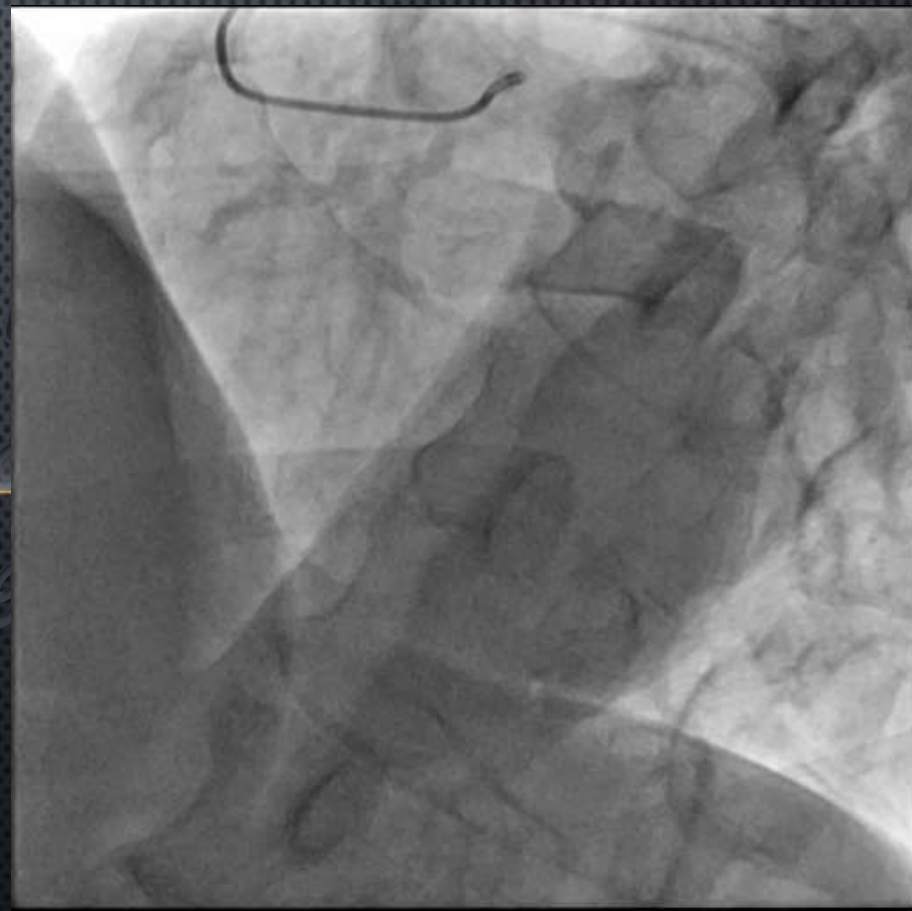
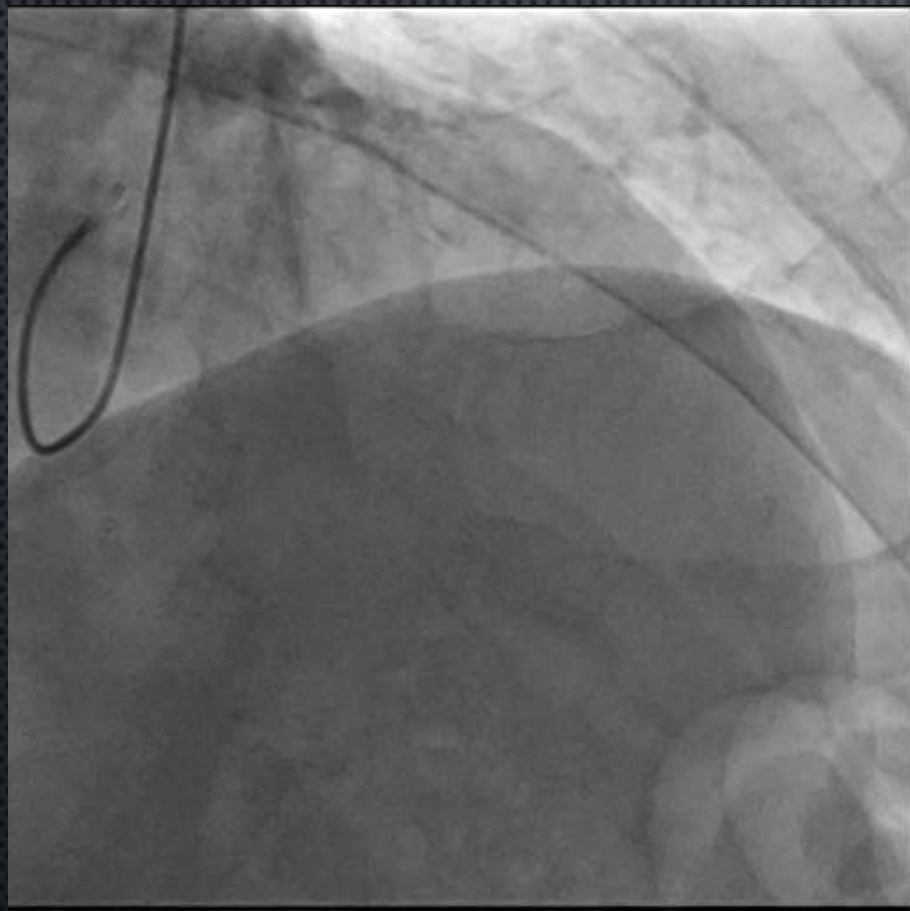
CCTI Conference

Best Performance

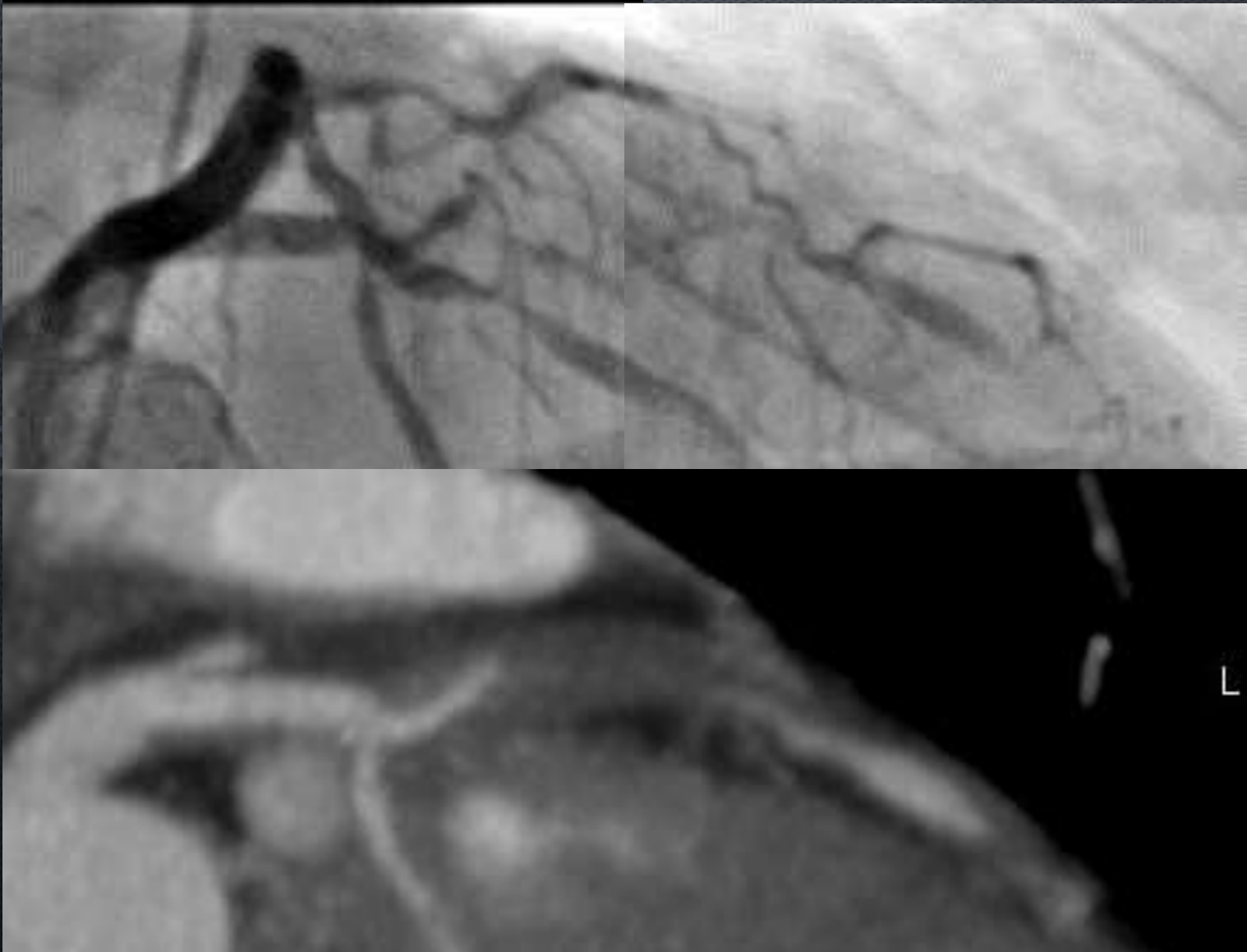
World



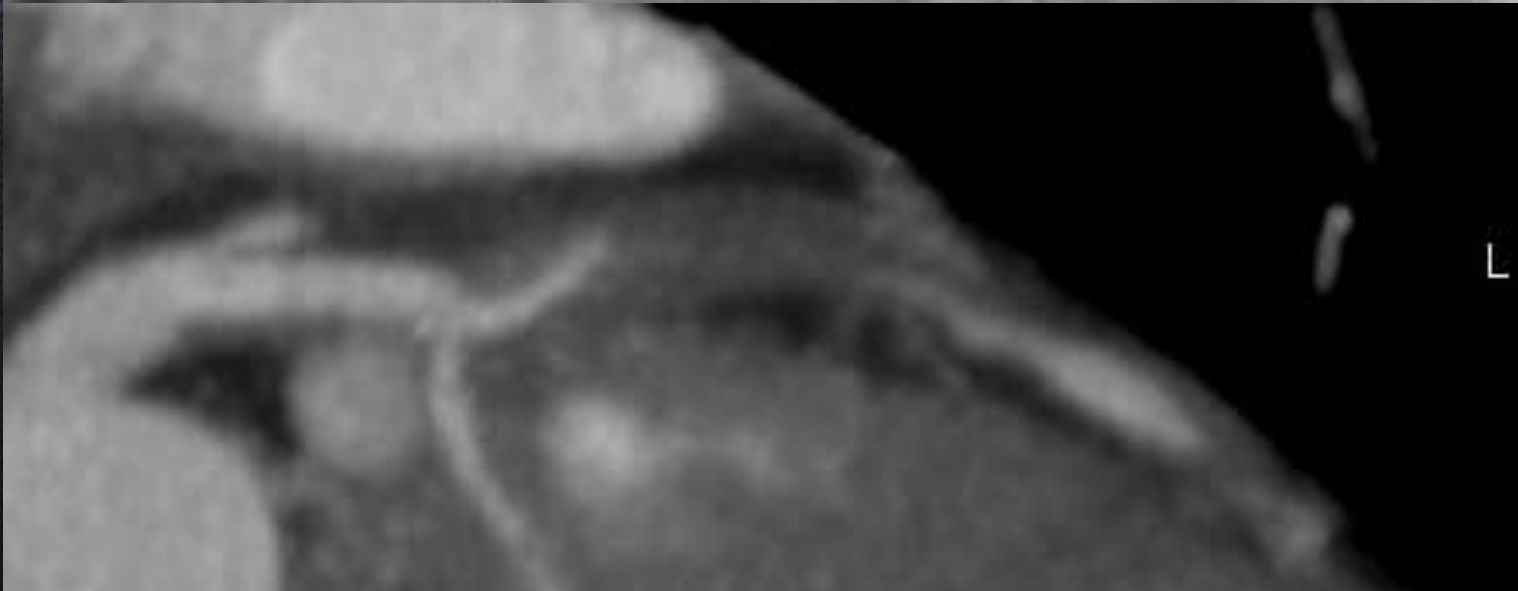
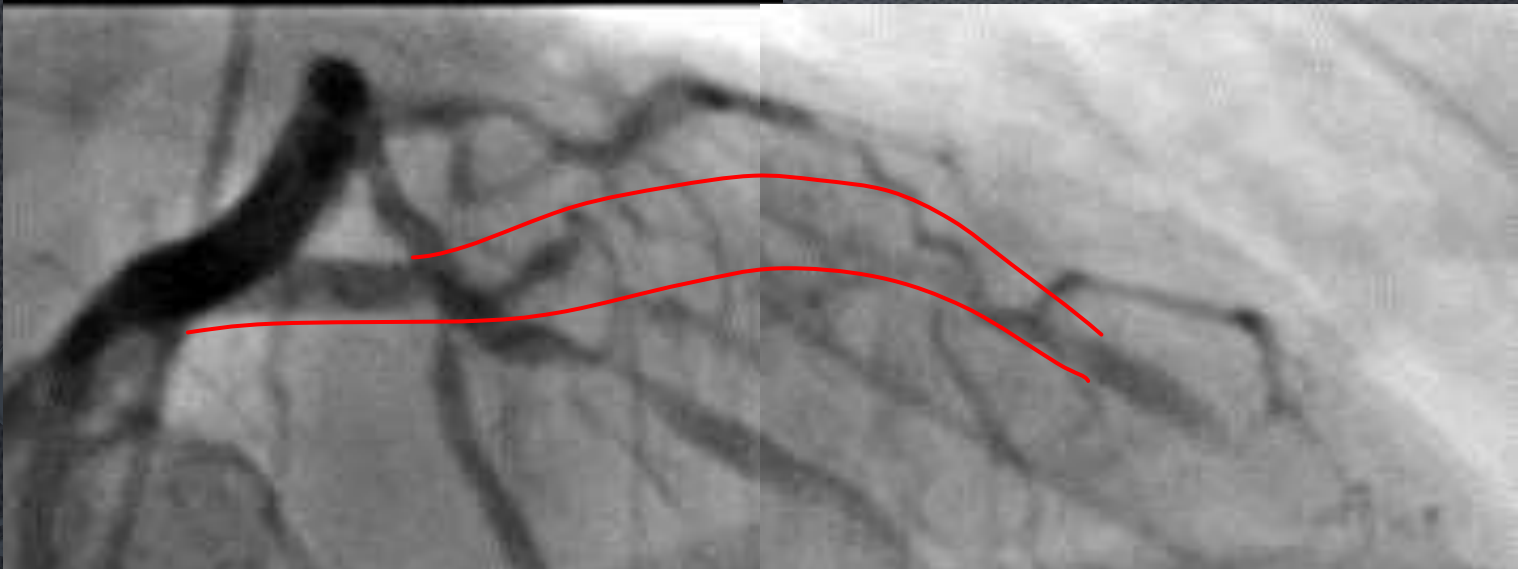
CAG



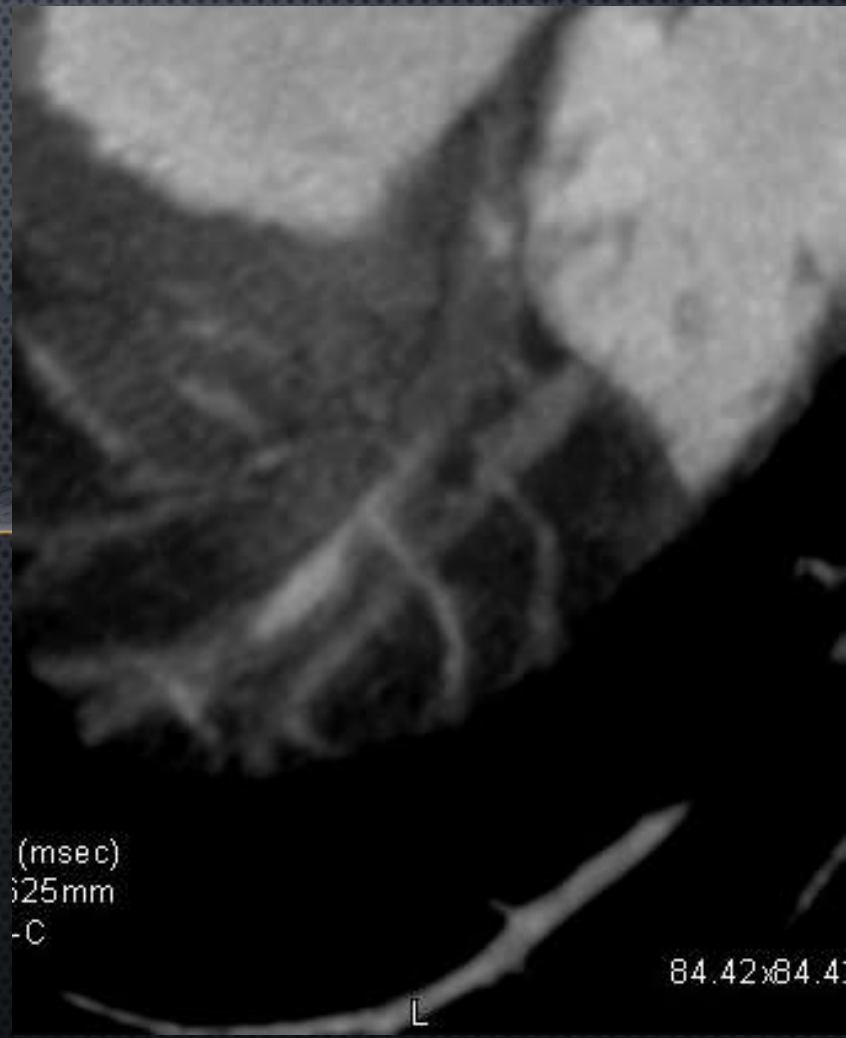
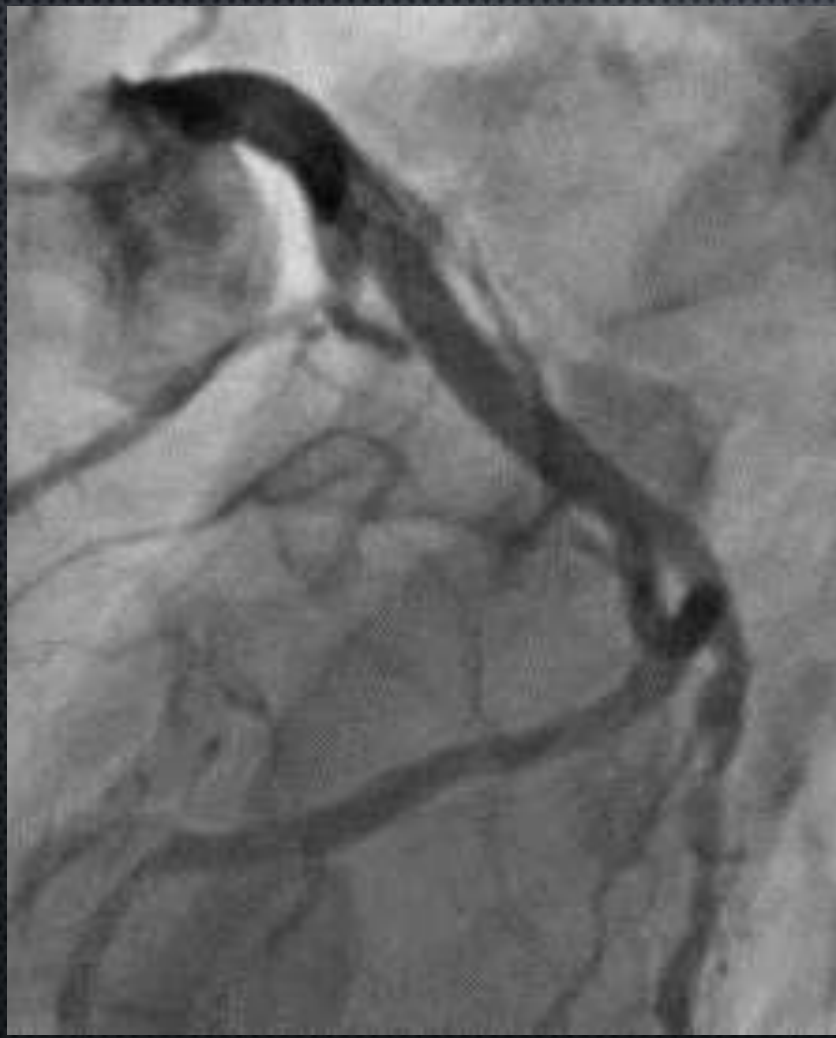
Contradistinction of CAG and CT



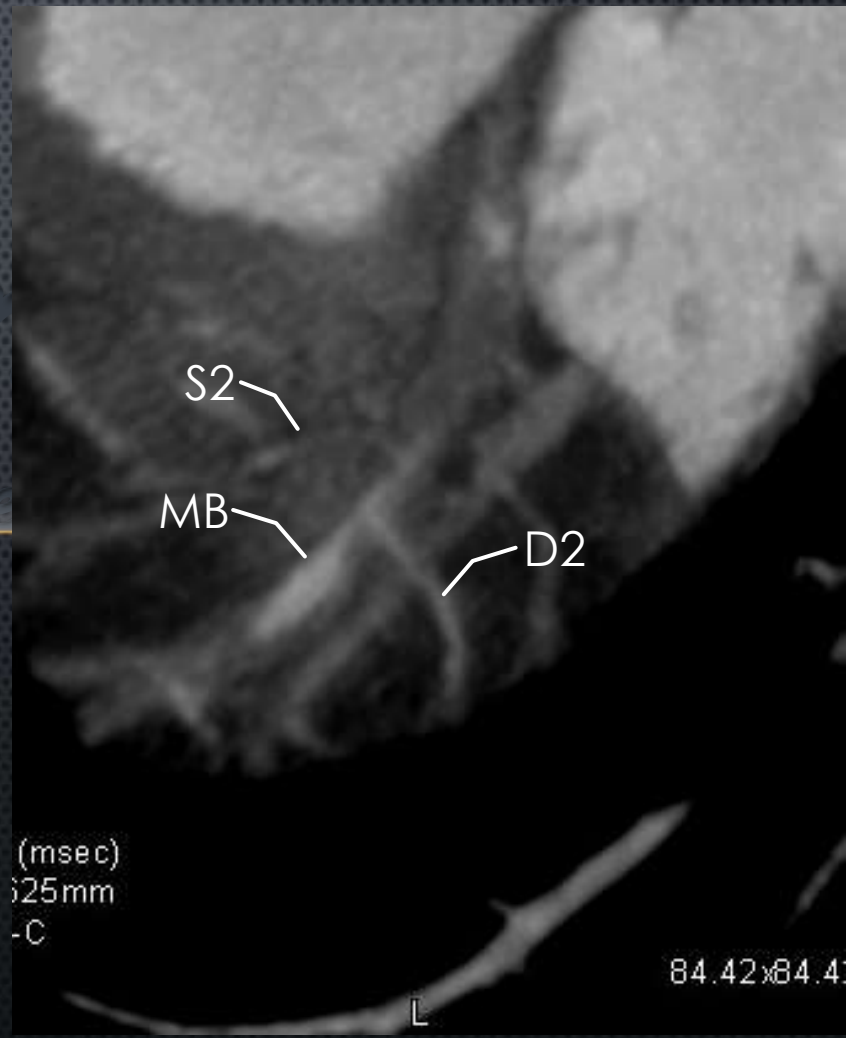
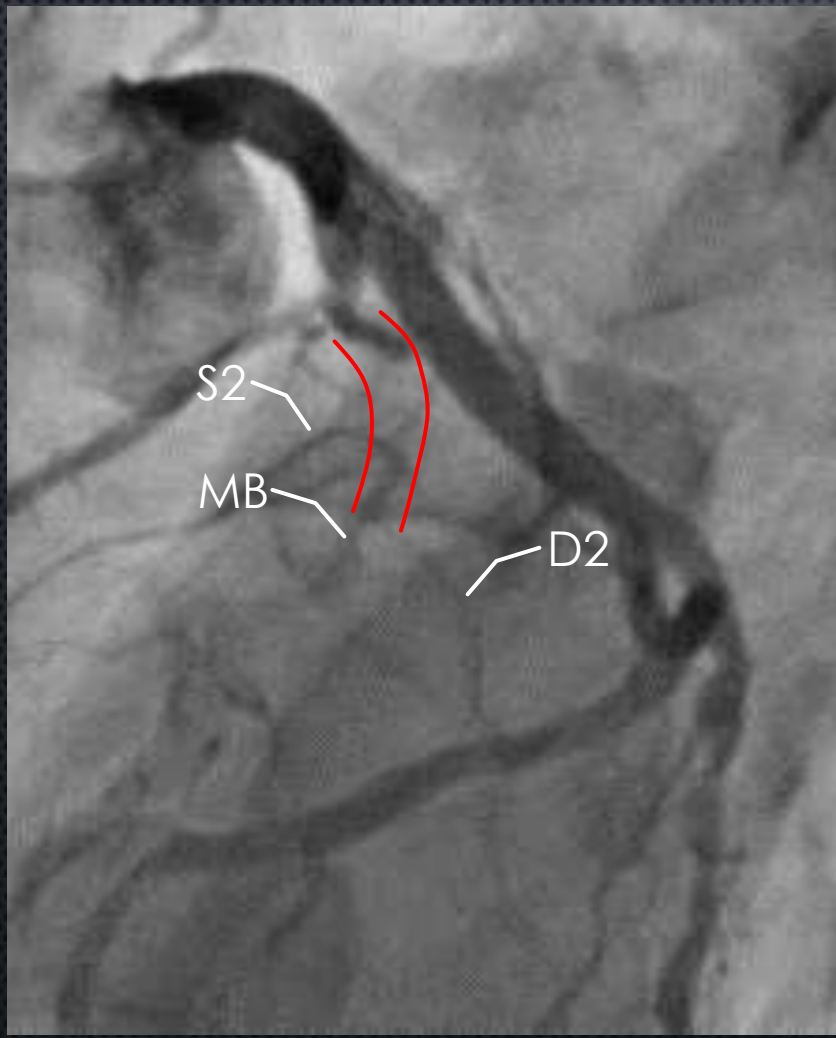
Contradistinction of CAG and CT



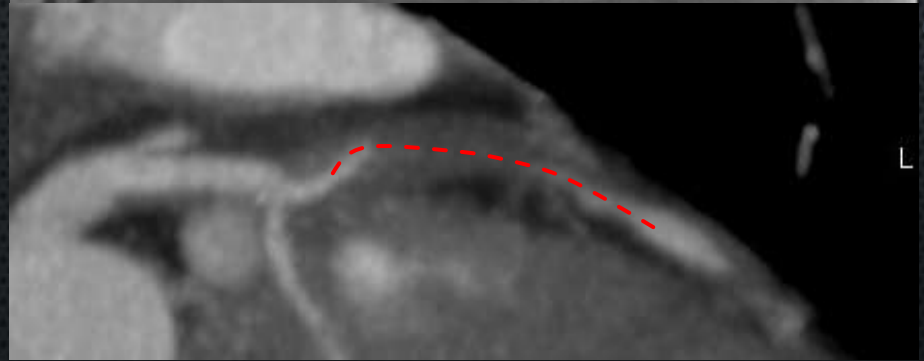
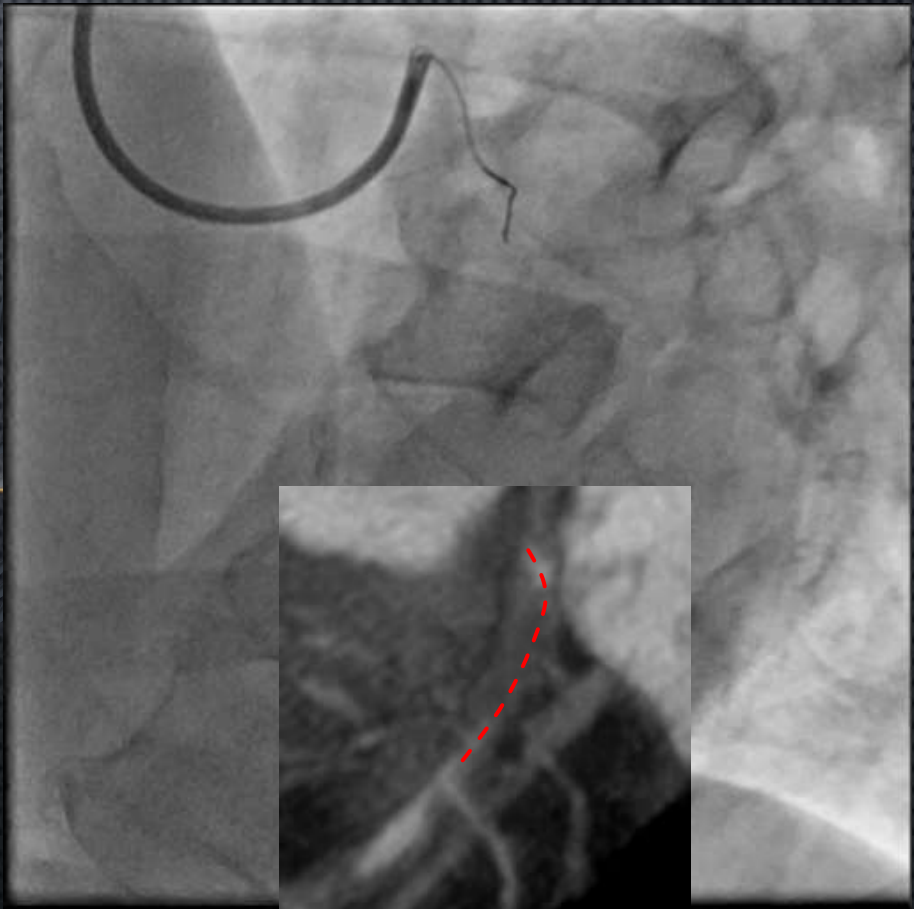
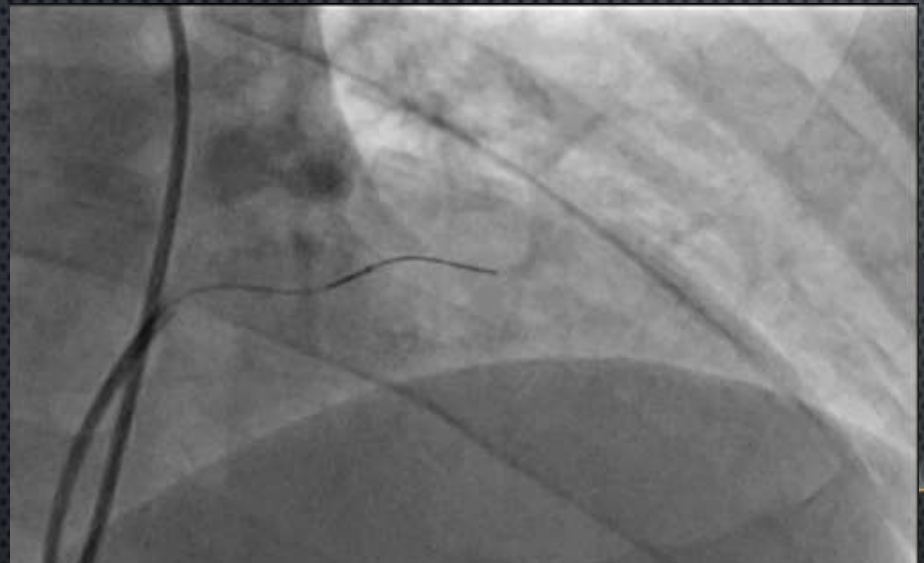
Contradistinction of CAG and CT



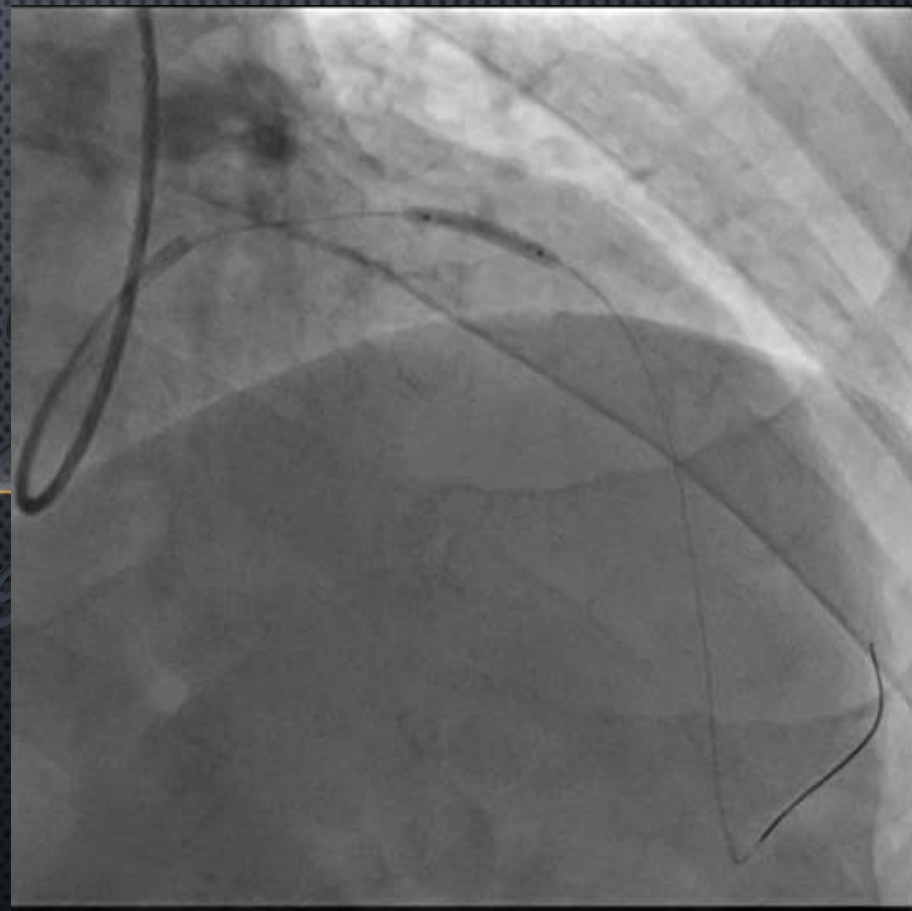
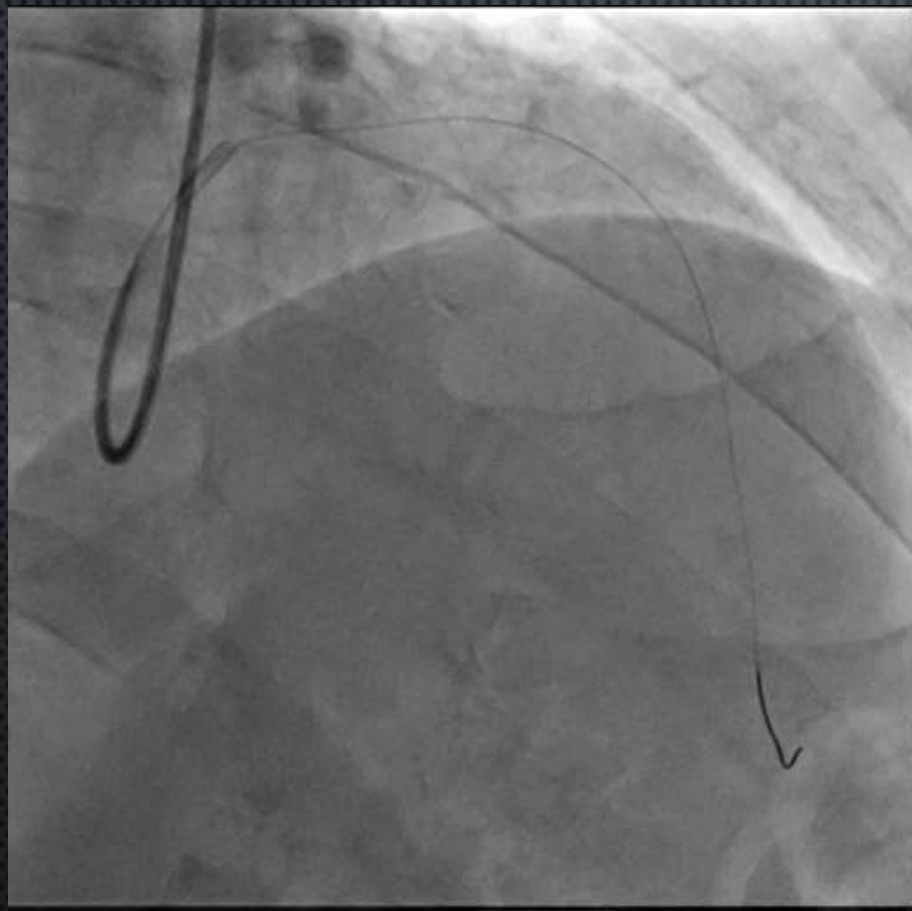
Contradistinction of CAG and CT



PCI

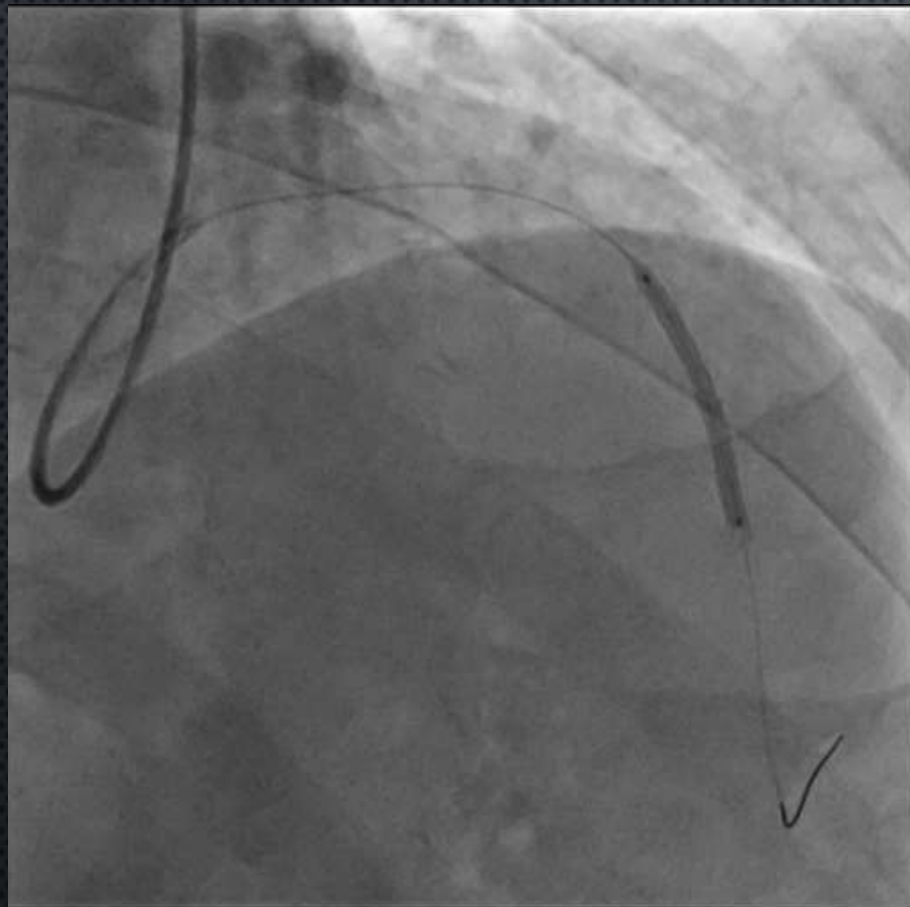


PCI



PCI

Nobori (2.5*28mm)

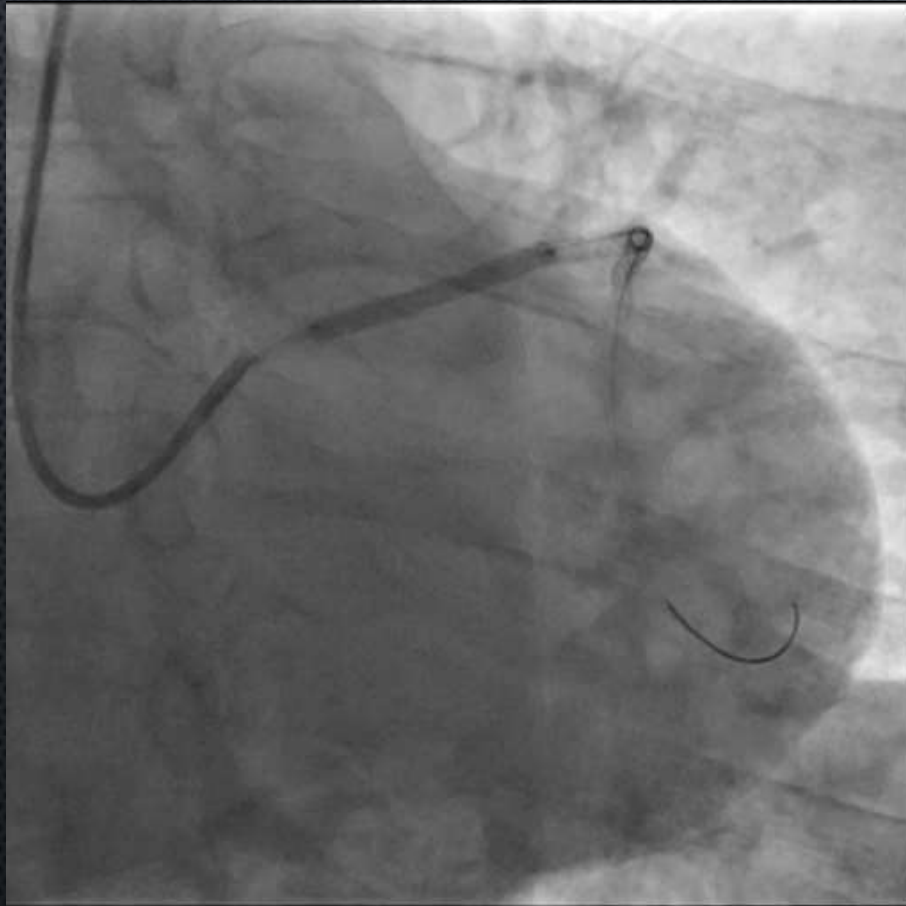


Nobori (2.5*28mm)



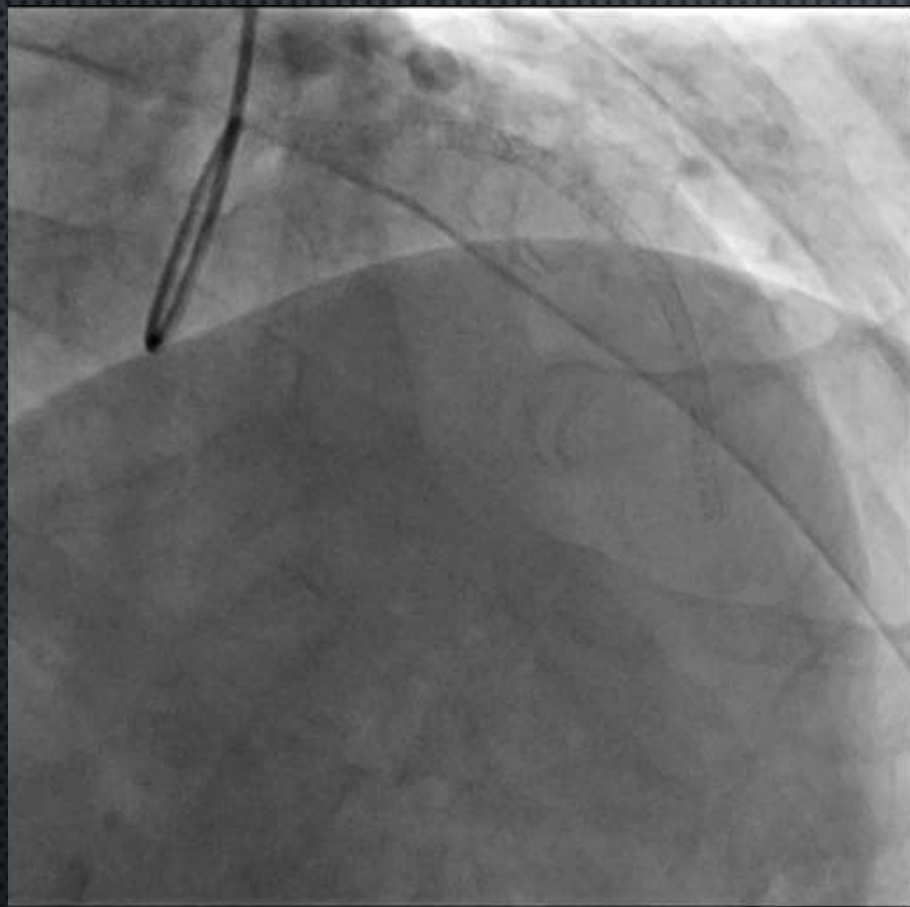
PCI

Nobori (3.0*28mm)



Interference
of Cardiac CT
group

Final CAG



Entry point

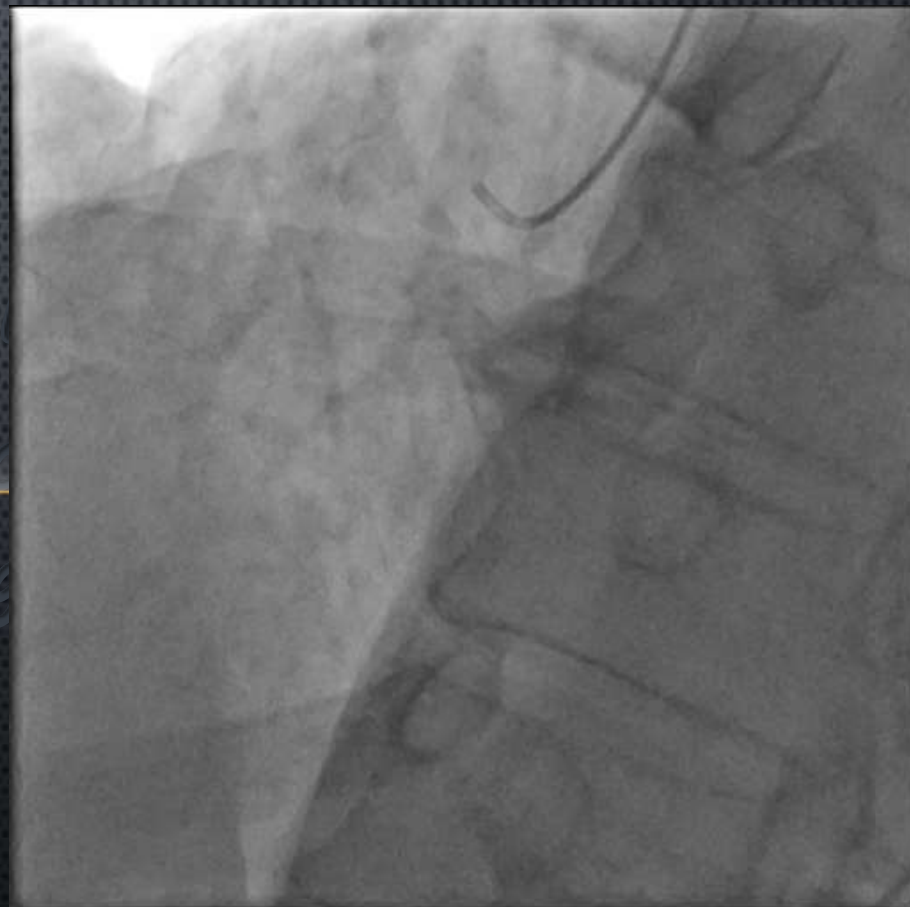
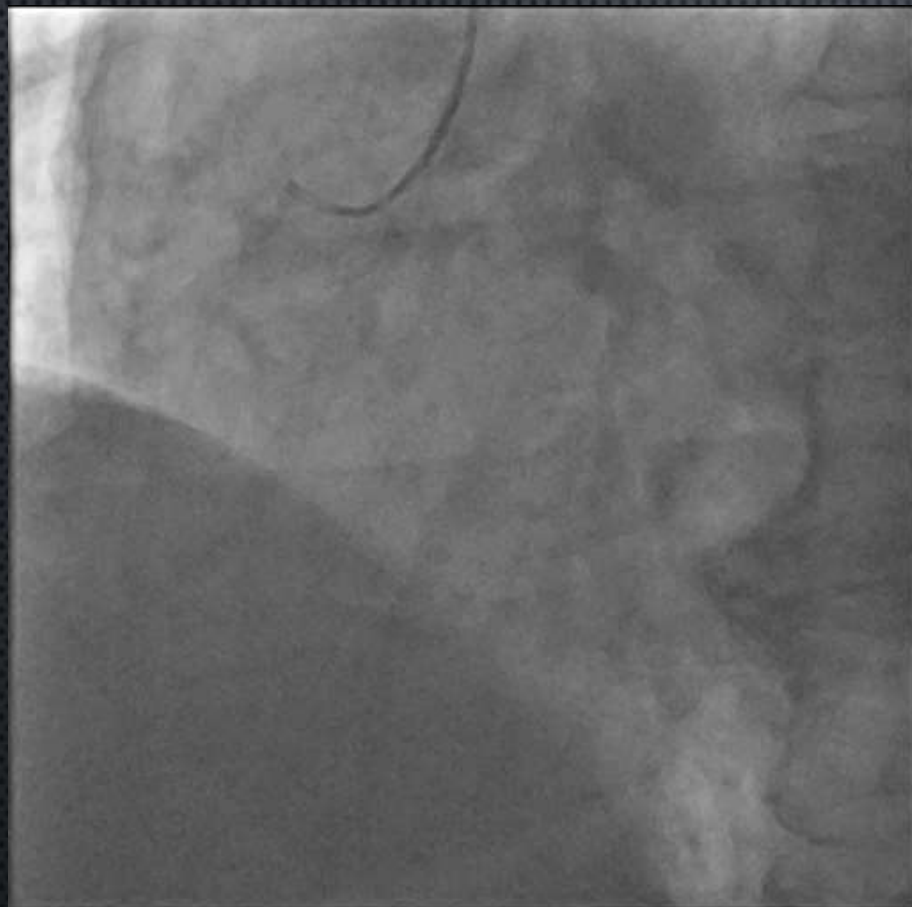
CCTI Conference

Best Performance

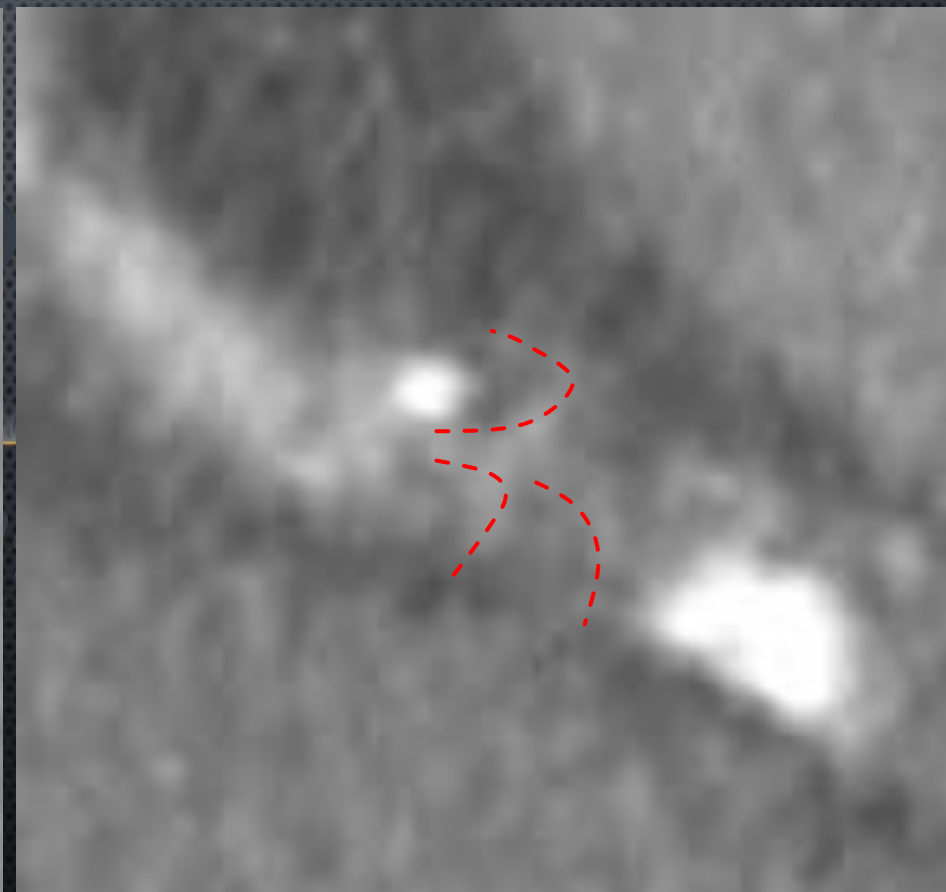
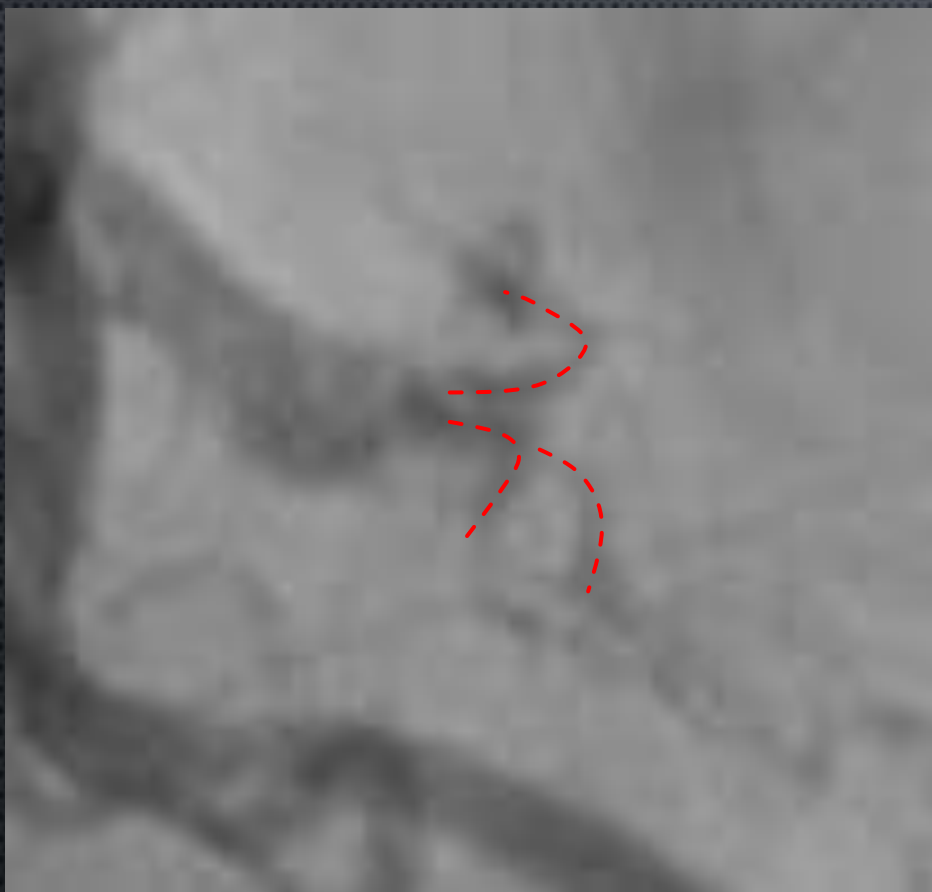
Working



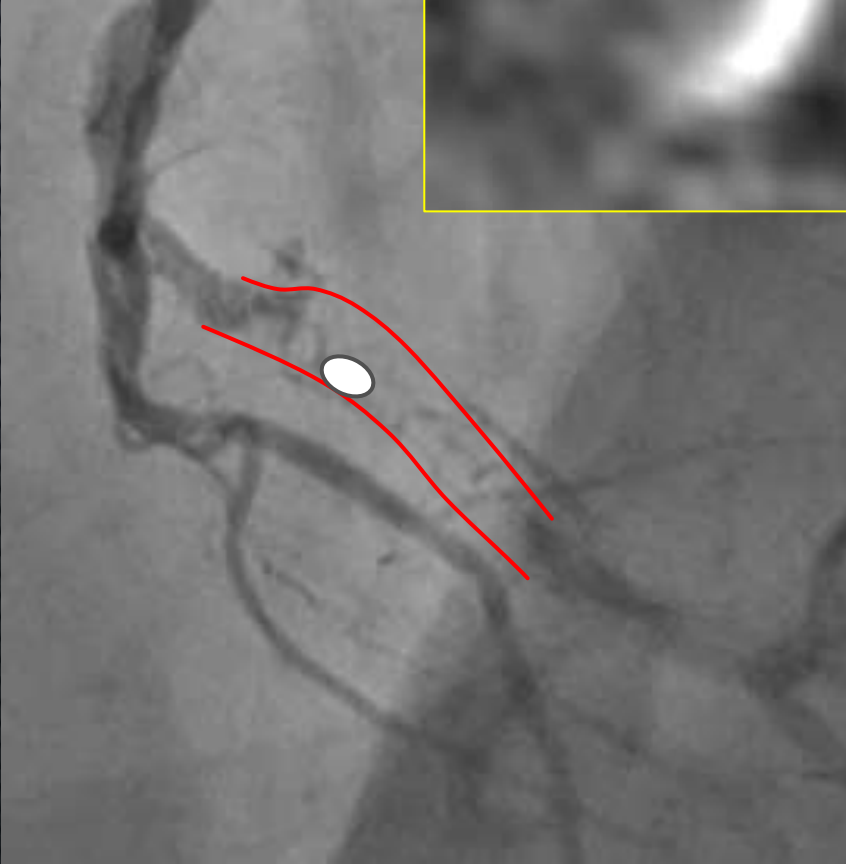
CAG



CTO entry



Vessel outline



HELICAL MODE **Not for diagnostic use H**
 St: 999999 Se: 70
 DFOV 20 (cm)
 [DETAIL]

120 (kV)
 750 (mA) 227 (msec)
 Thickness: 0.625mm
 CT MPR 断面-C
 LAO: 73.5
 CRA: 19.4

87.3x87.3 MIP, 5.0mm

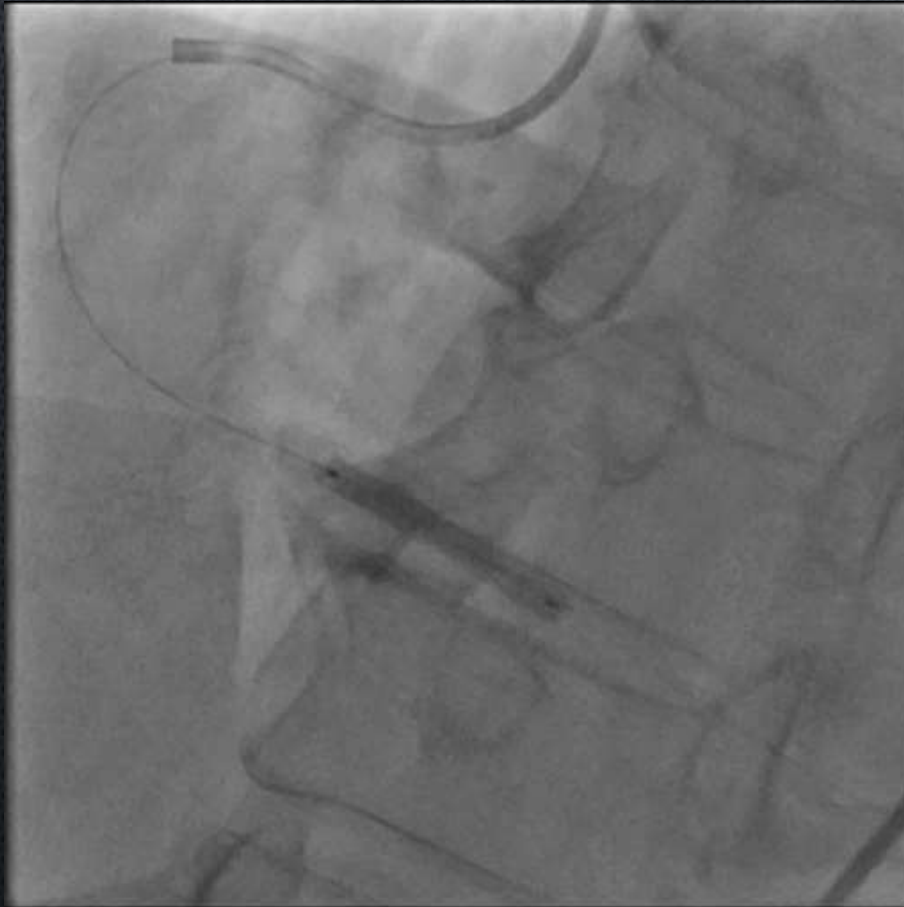
PCI

GC: 7Fr. Heartrail AL1.5
GW: Ultimate Bros3

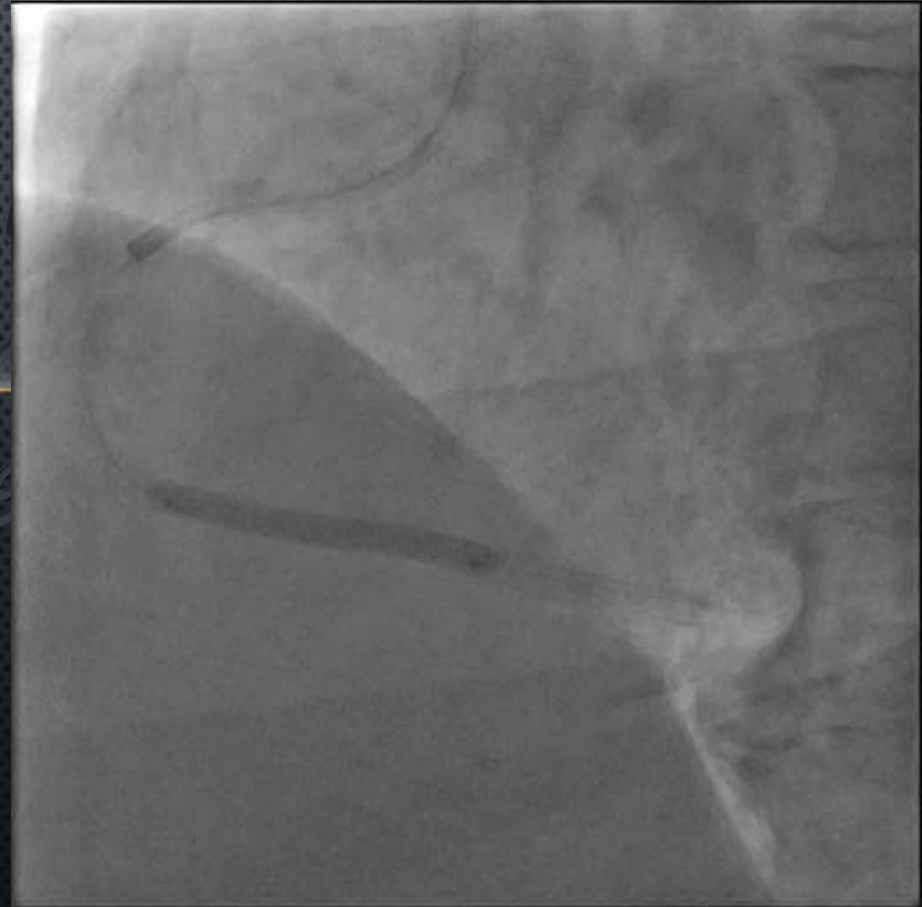


PCI

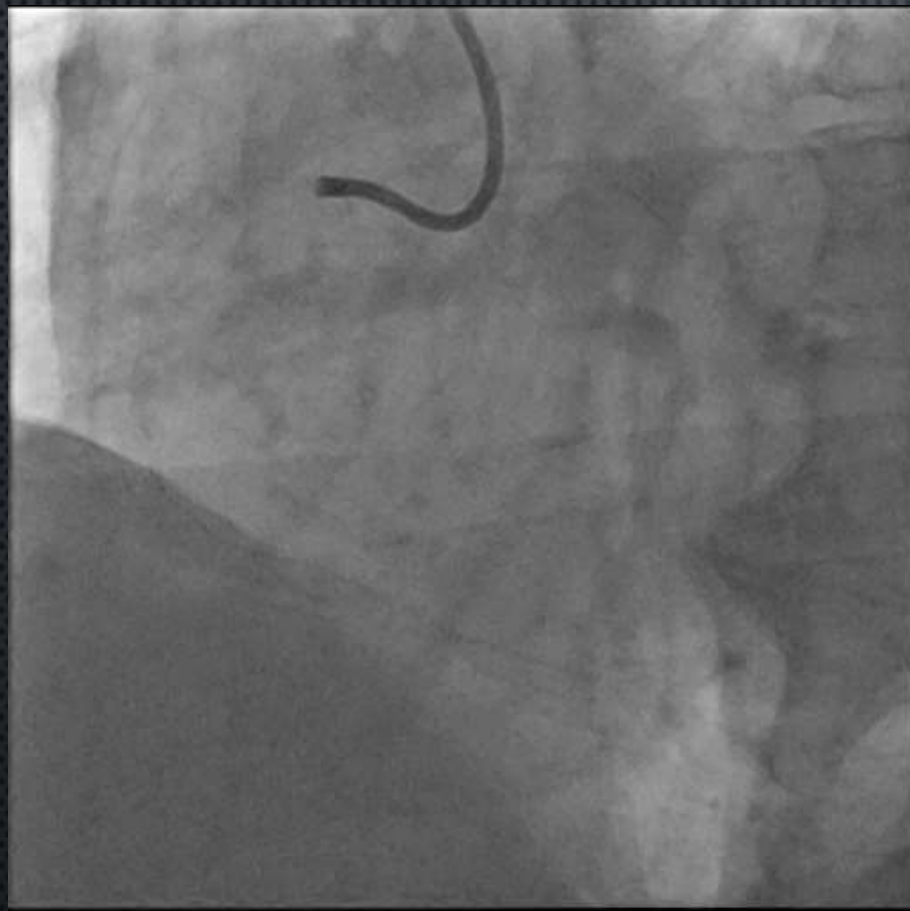
XiencePrime (3.5 × 33mm)



XiencePrime (3.5 × 38mm)



Final CAG

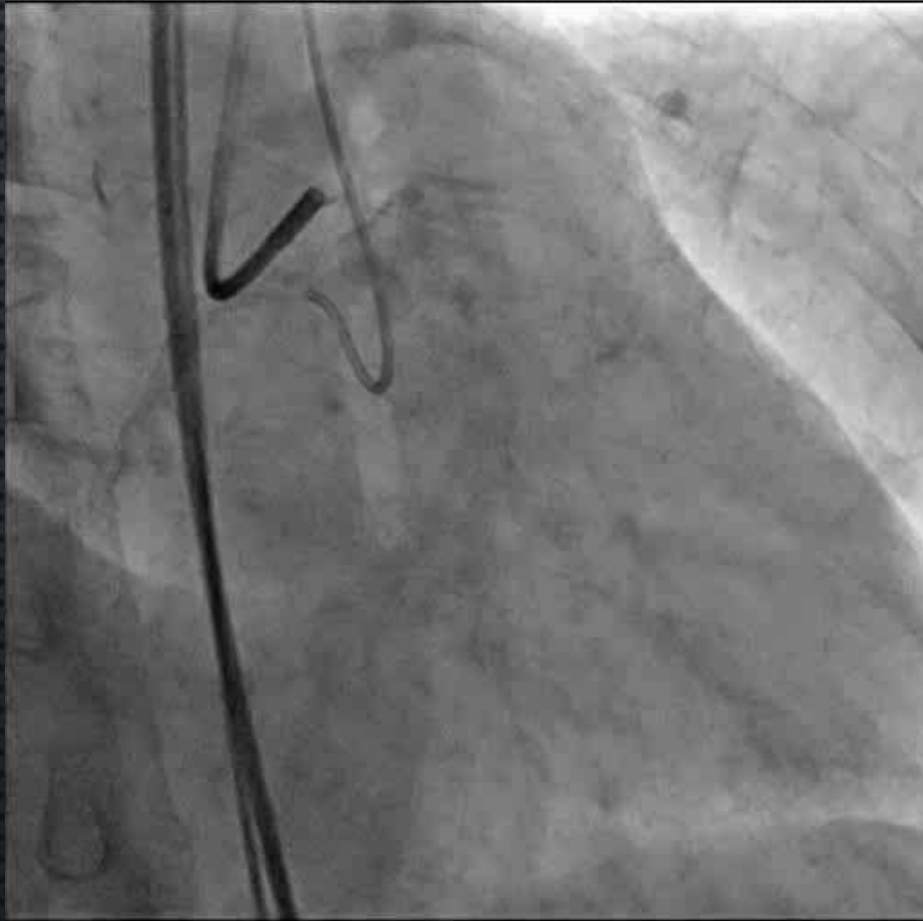


Calcium land mark

CCTI Confer
Best Performance of C
group



Control CAG

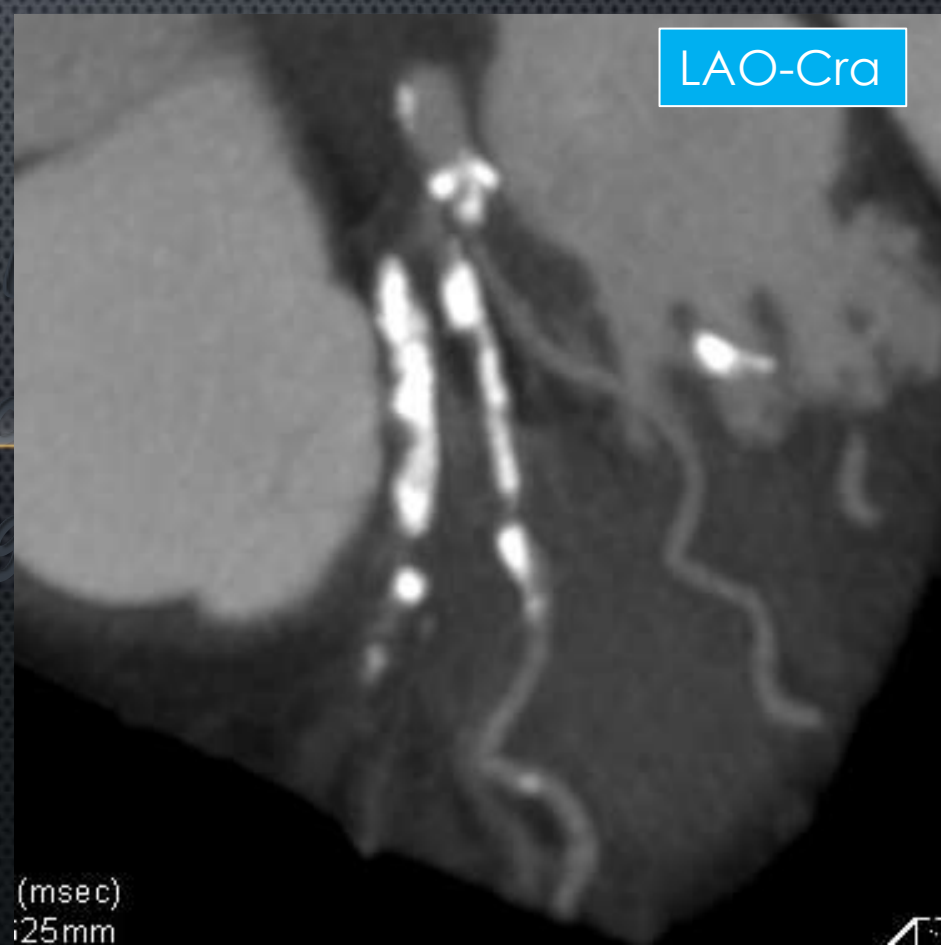


CT

RAO-Caud



LAO-Cra

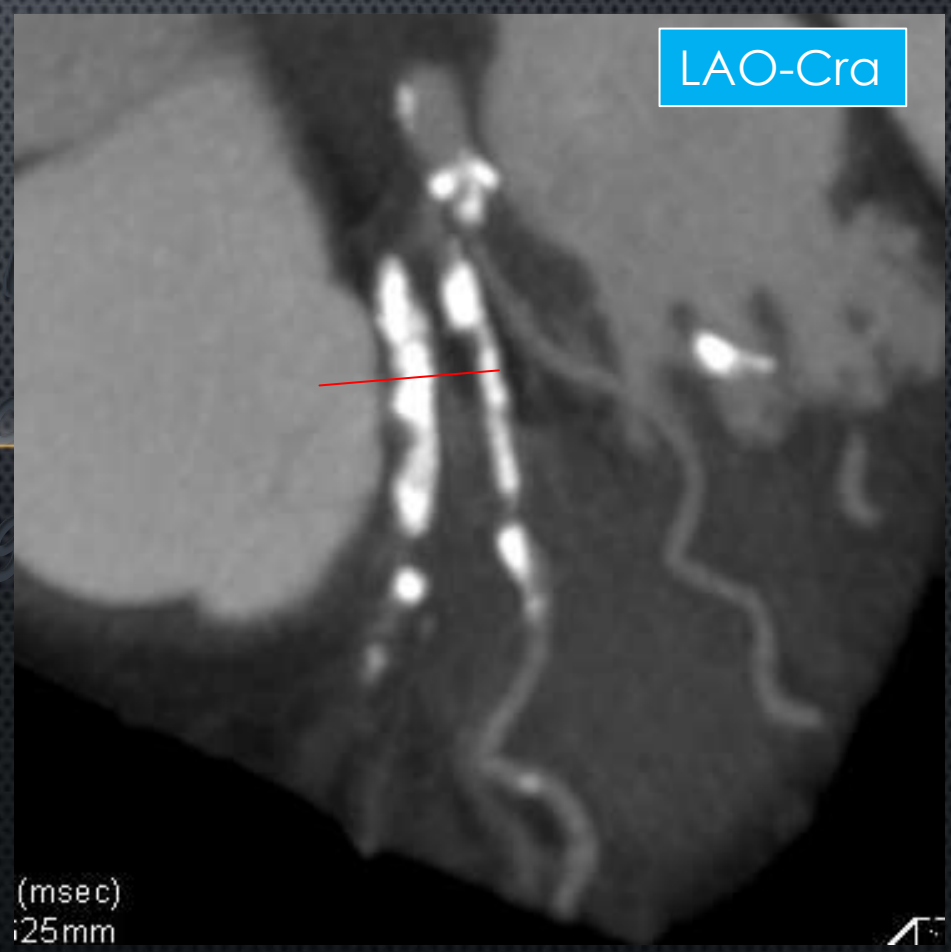


CT

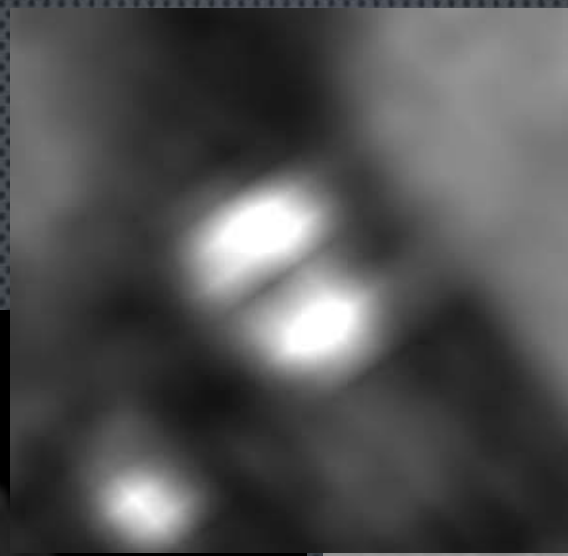
RAO-Caud



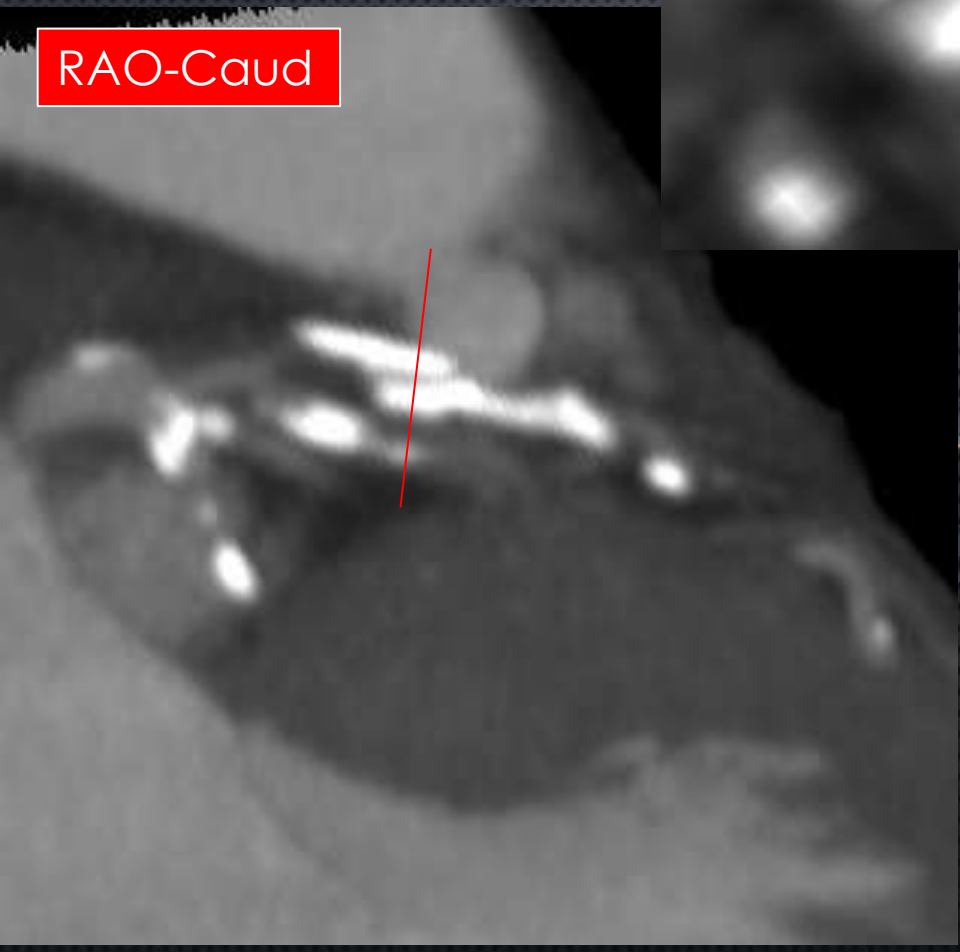
LAO-Cra



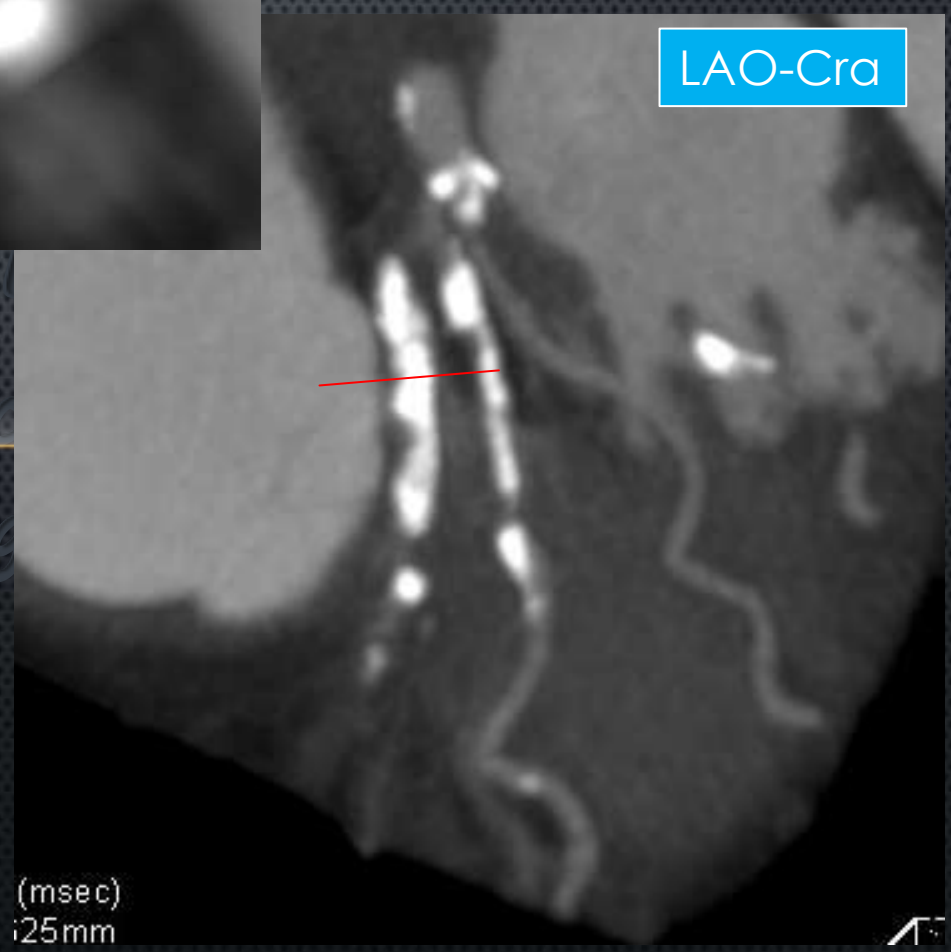
CT



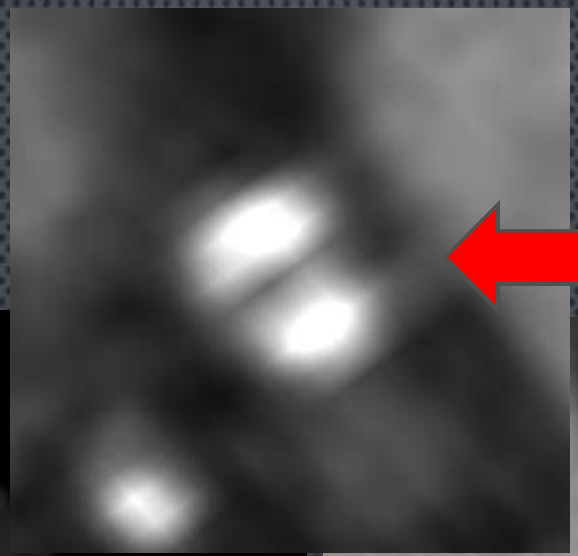
RAO-Caud



LAO-Cra

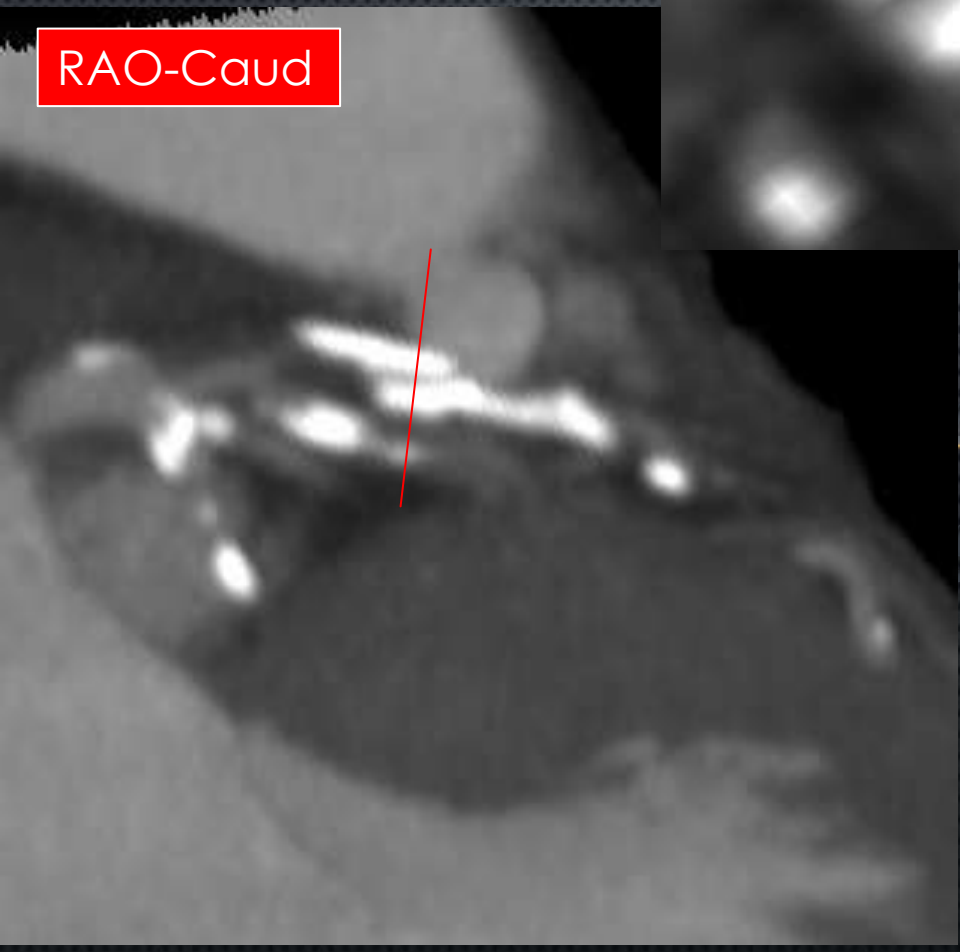


CT



RAO-Caud

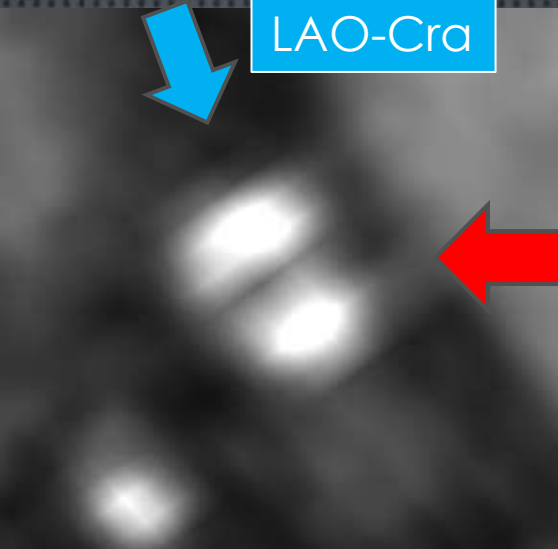
RAO-Caud



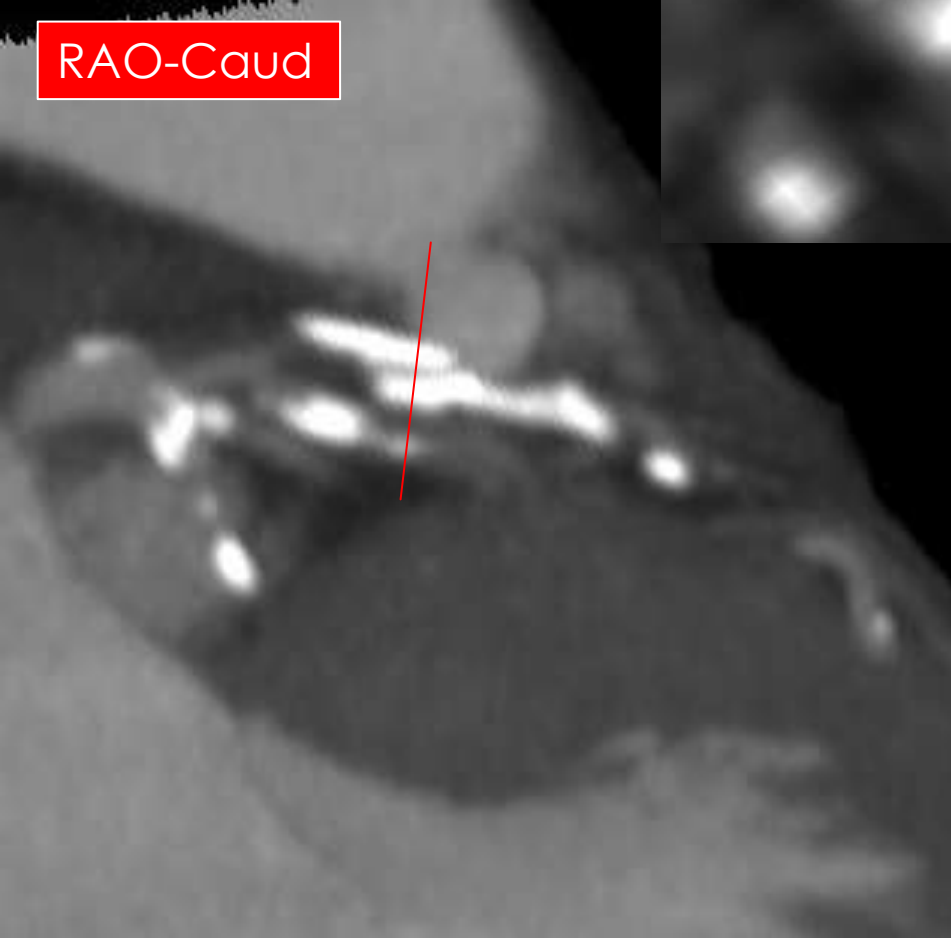
LAO-Cra



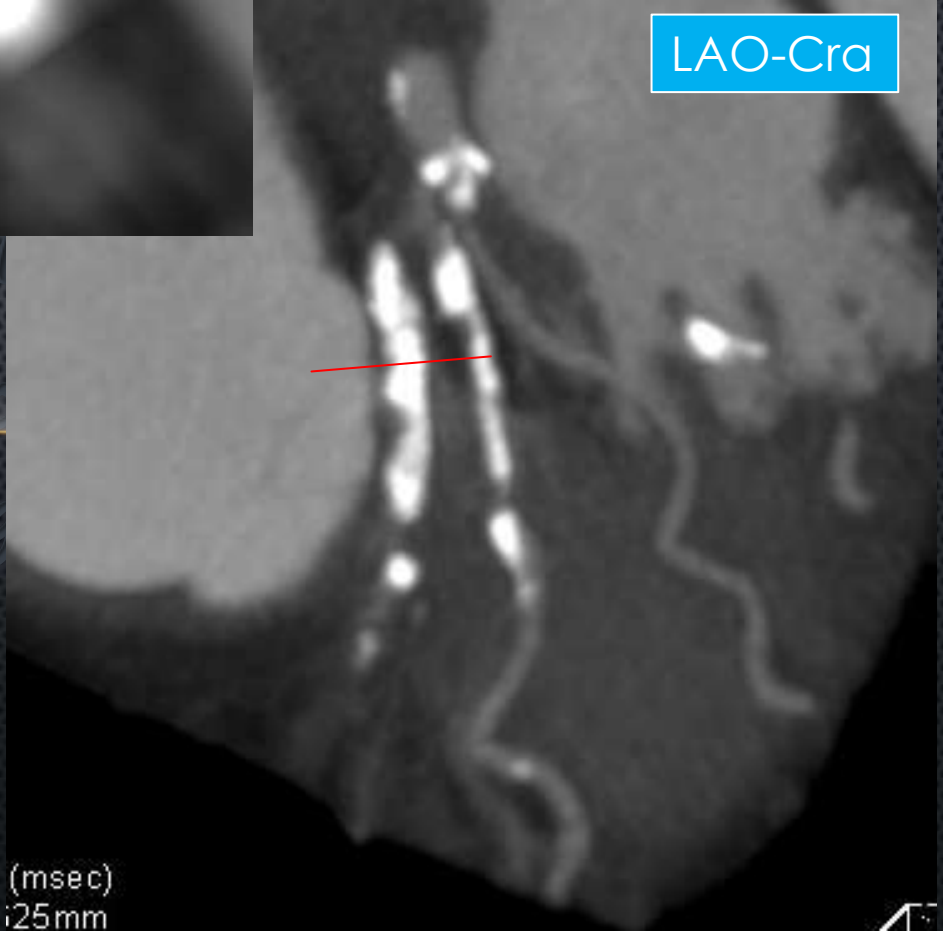
CT



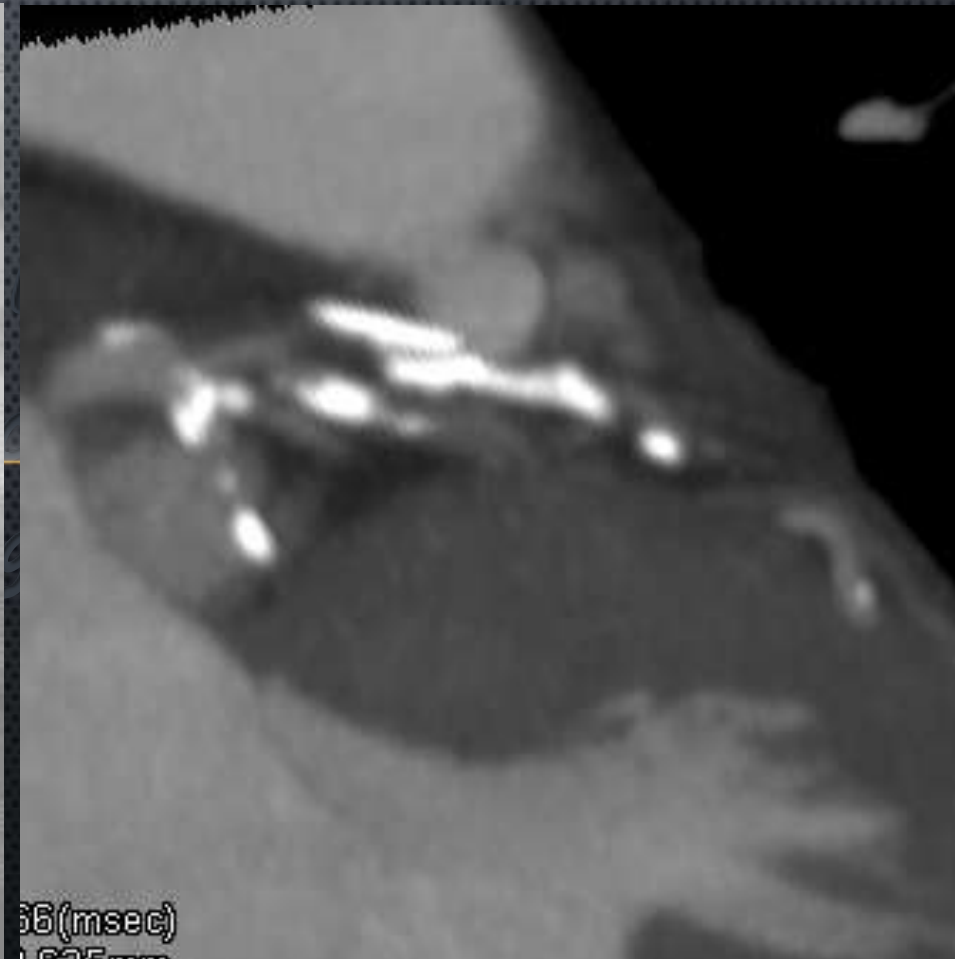
RAO-Caud



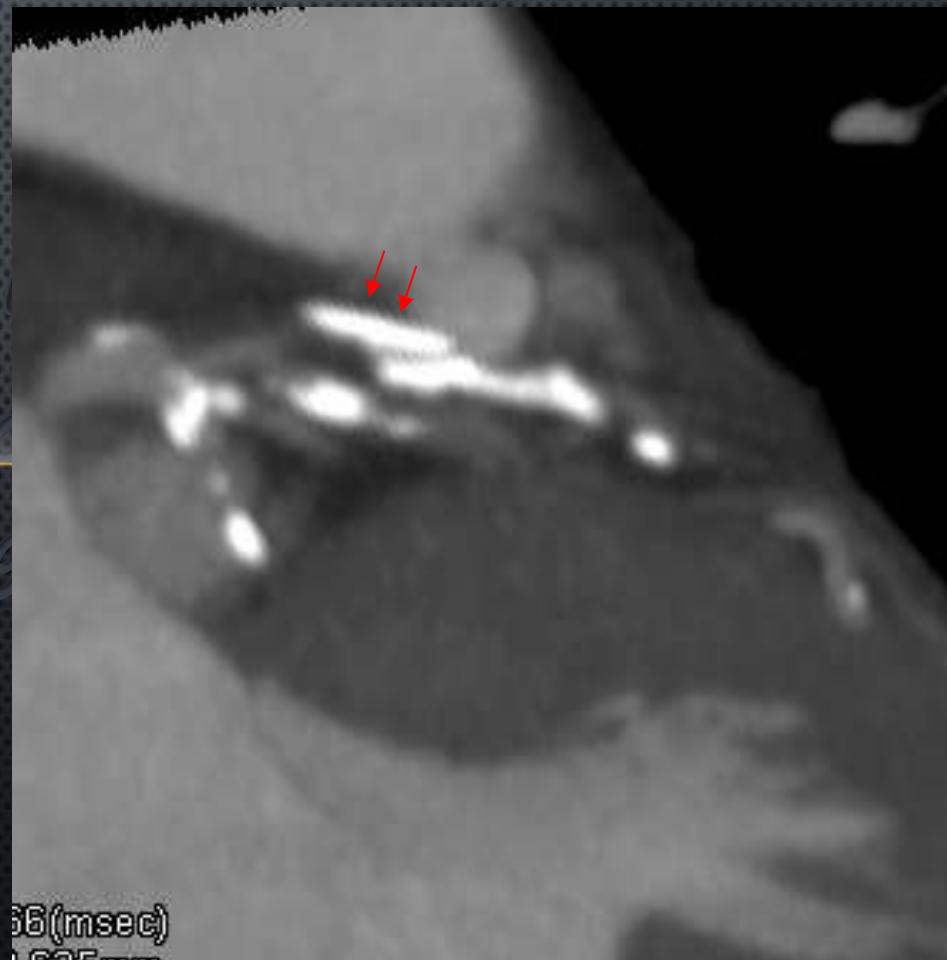
LAO-Cra



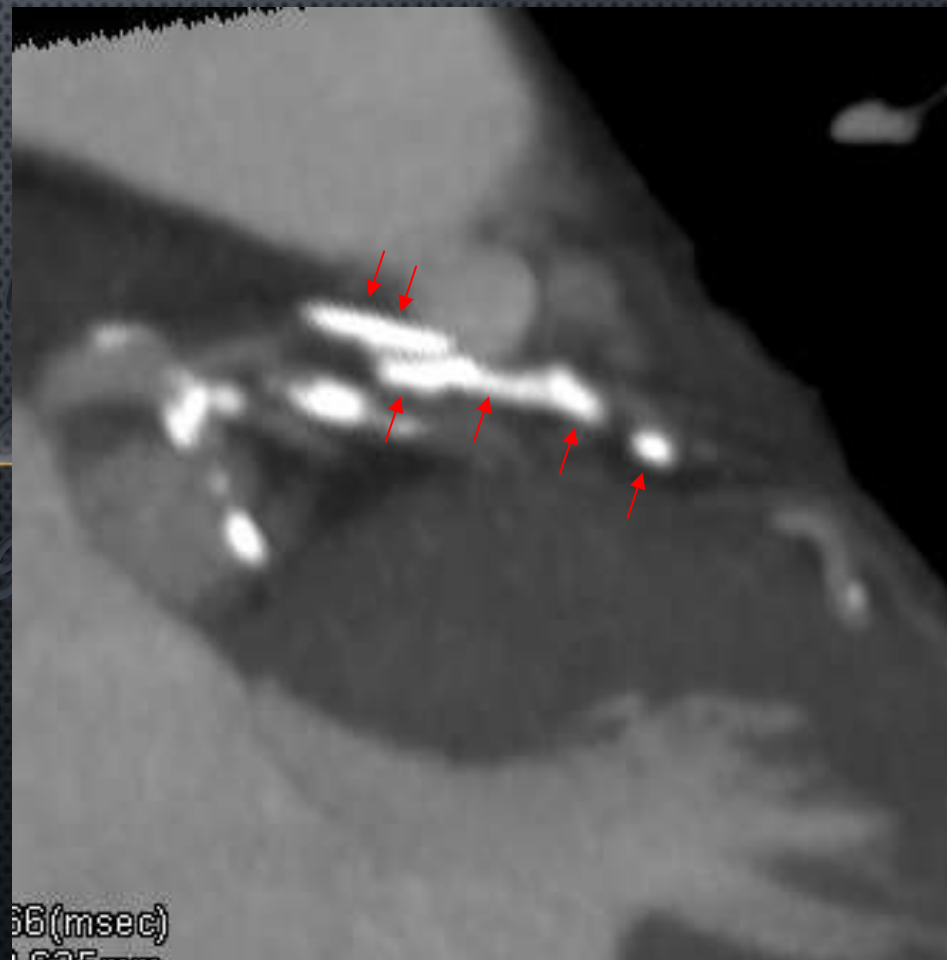
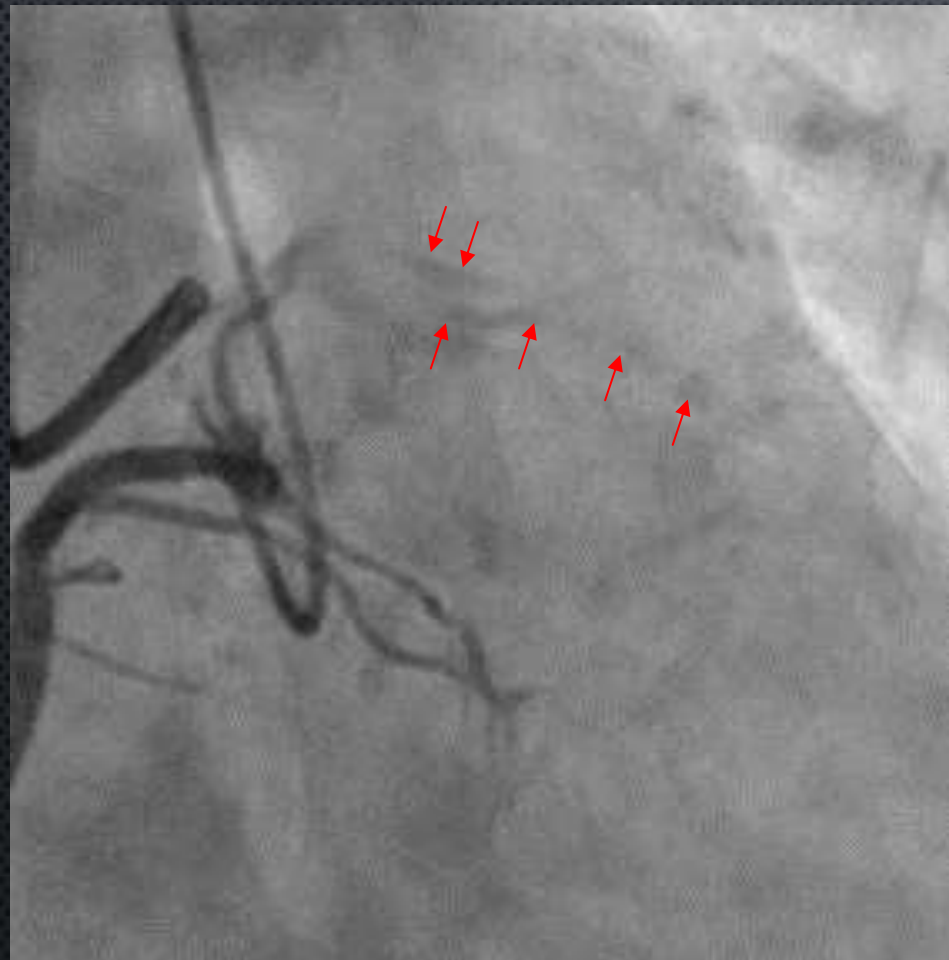
Route mapping



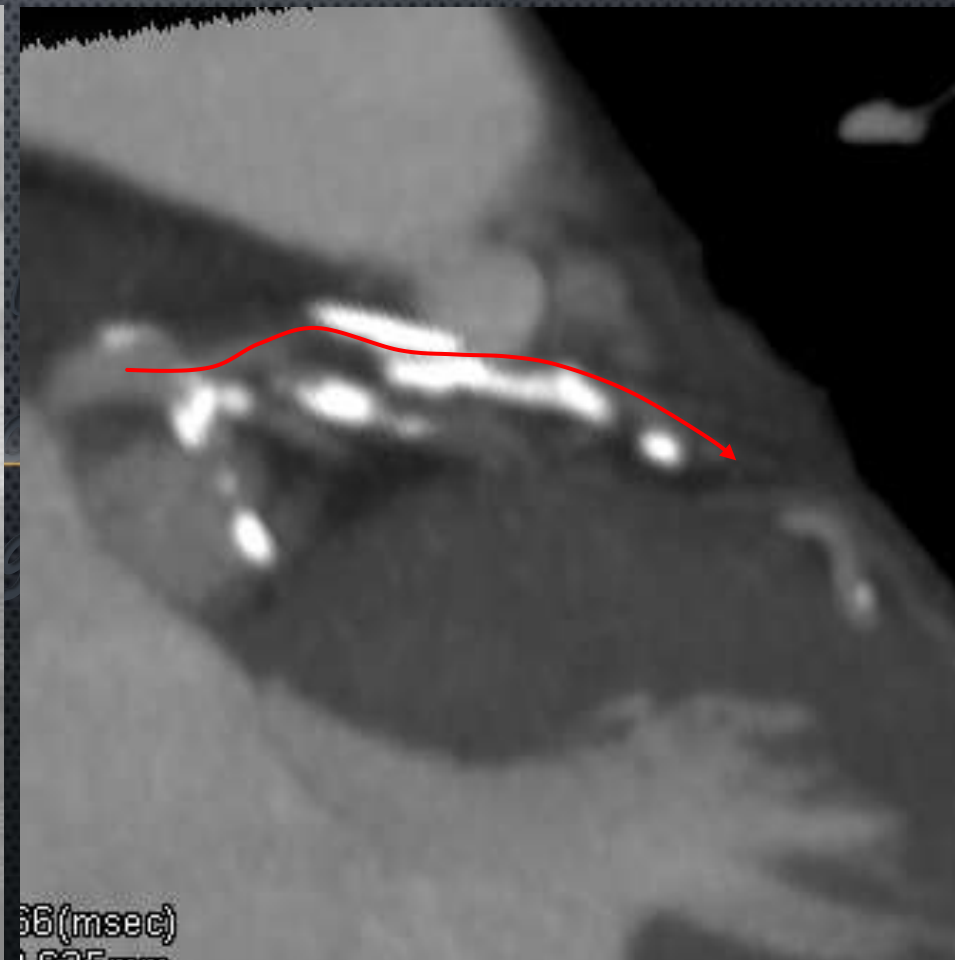
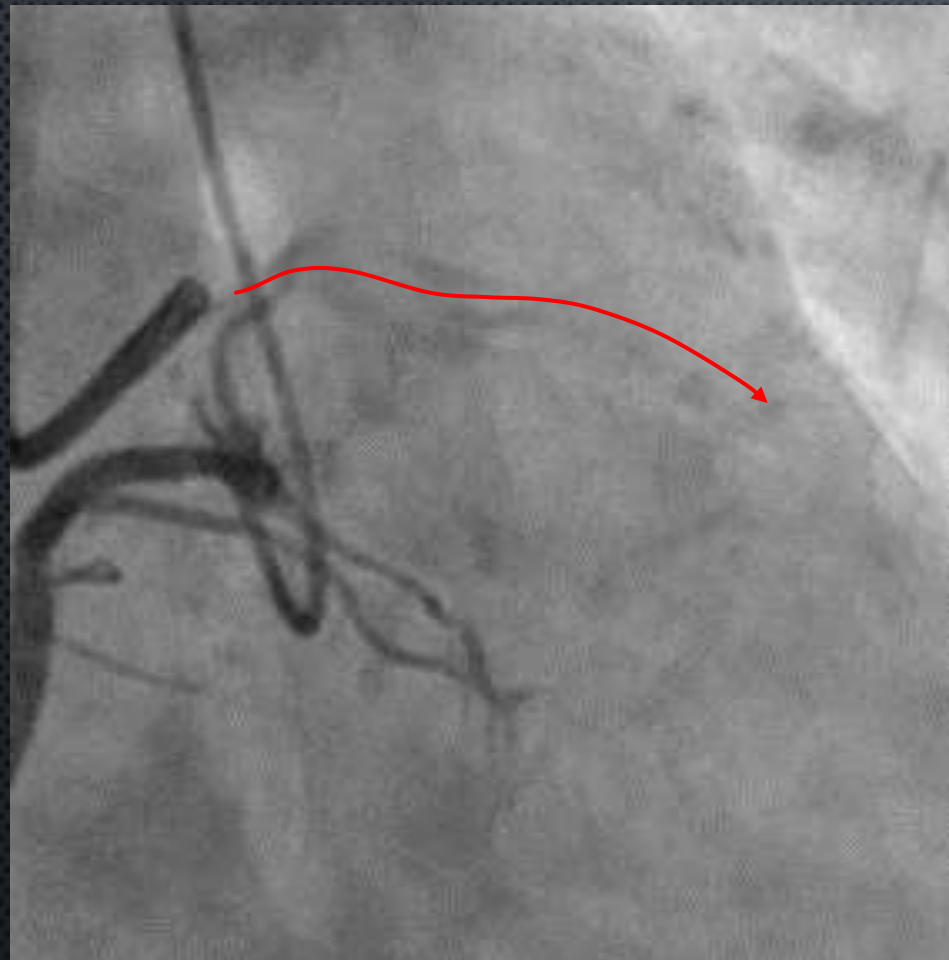
Route mapping



Route mapping



Route mapping

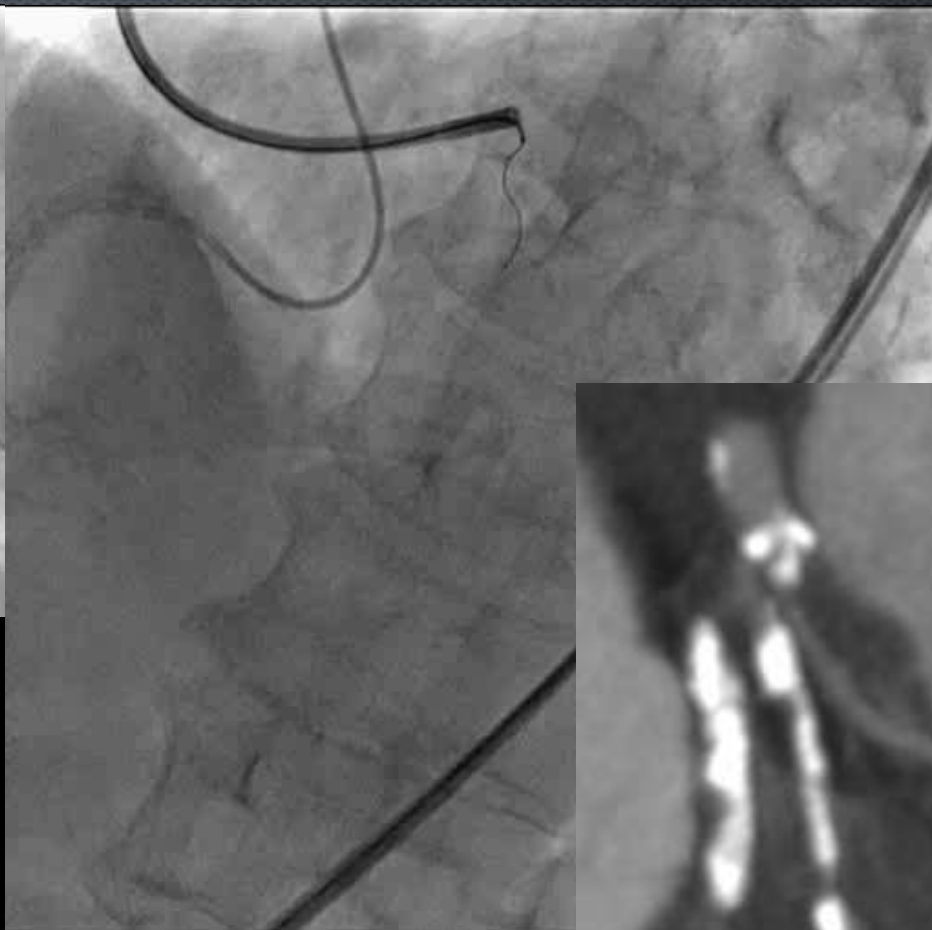


Route mapping

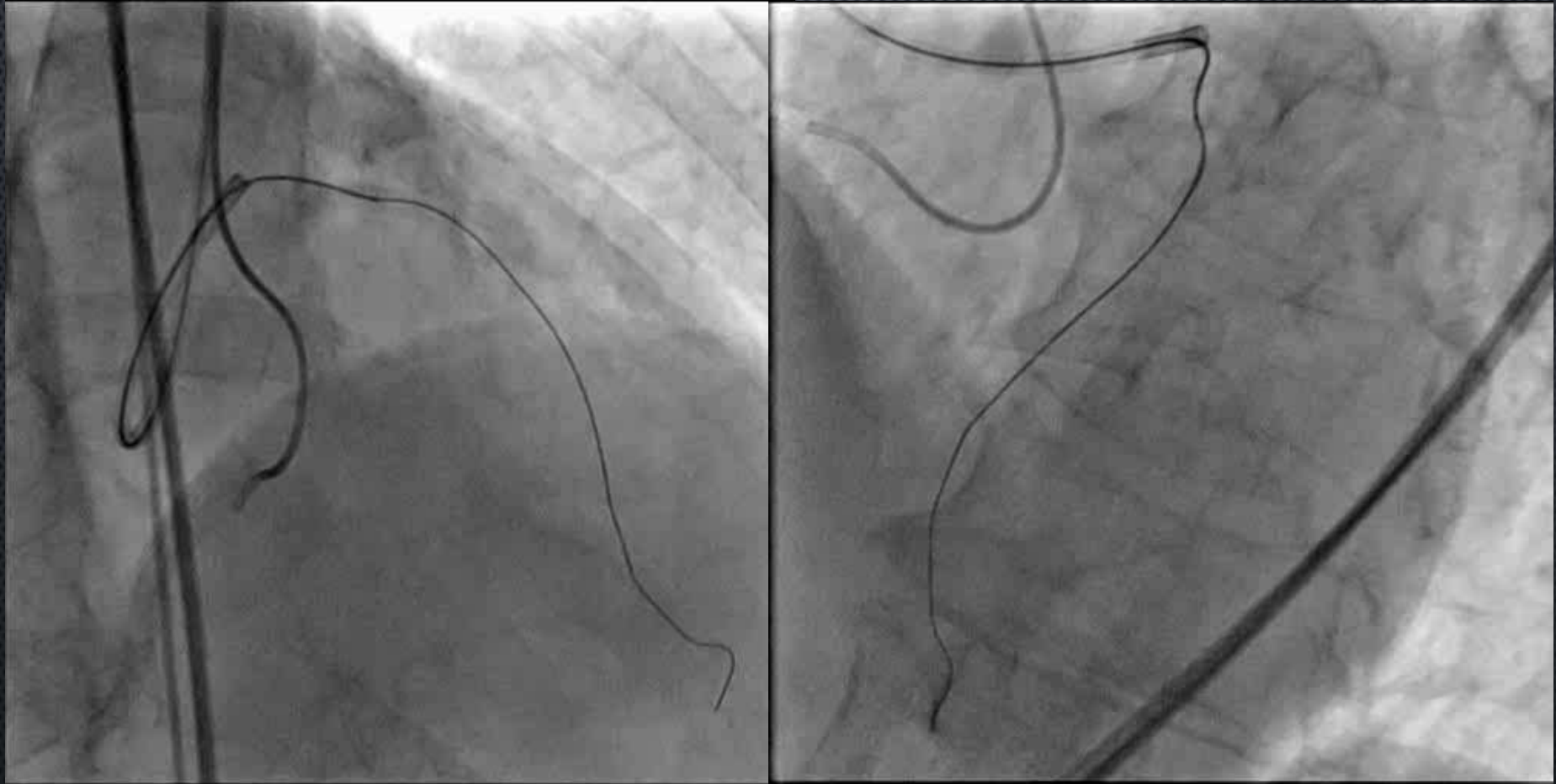


Wiring by calcification guidance

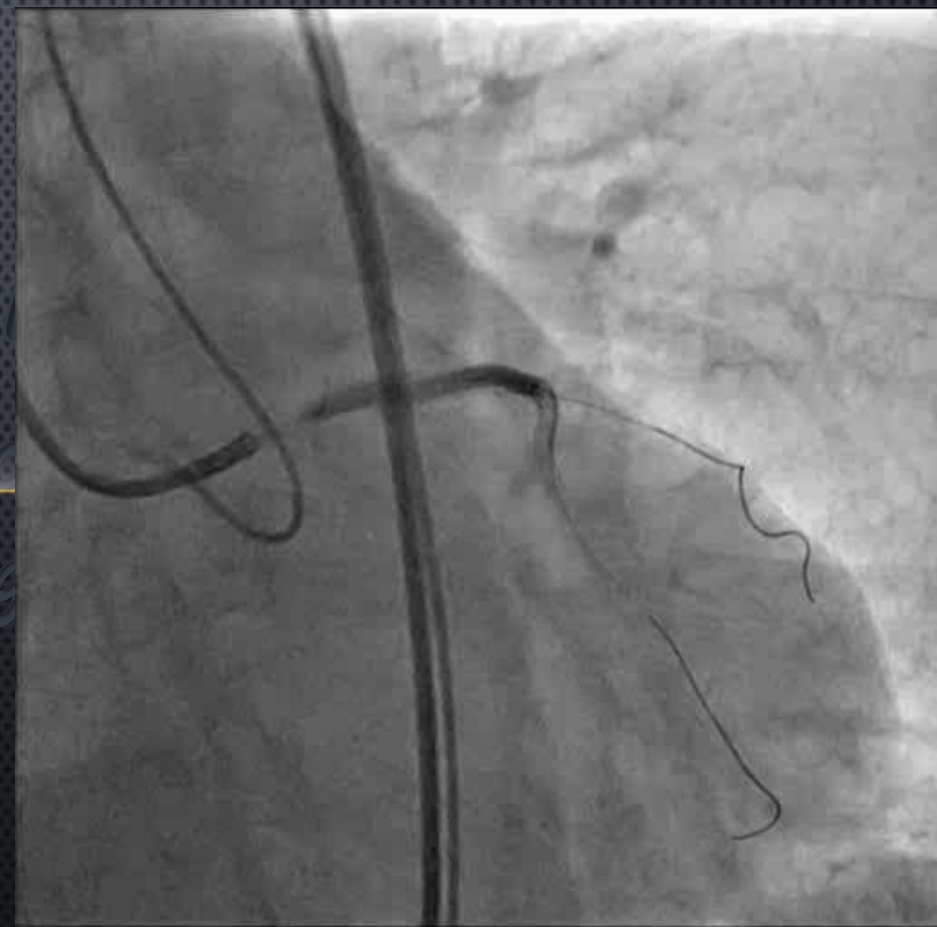
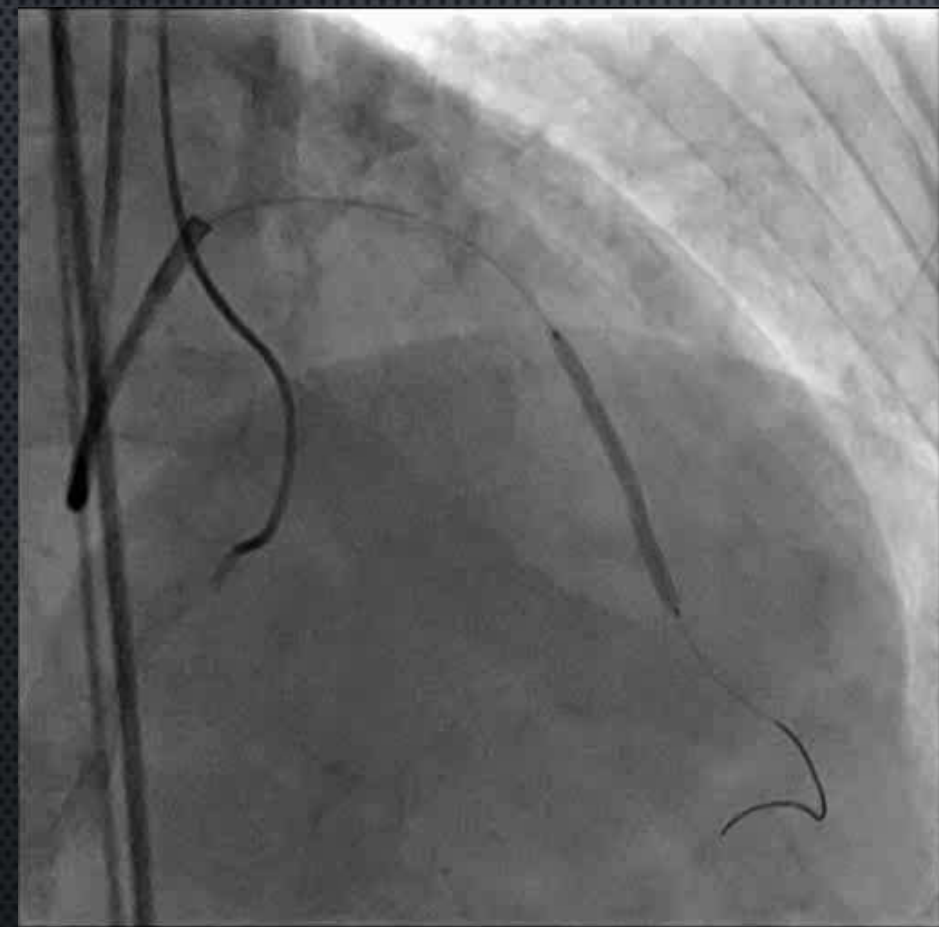
GW: XT-A



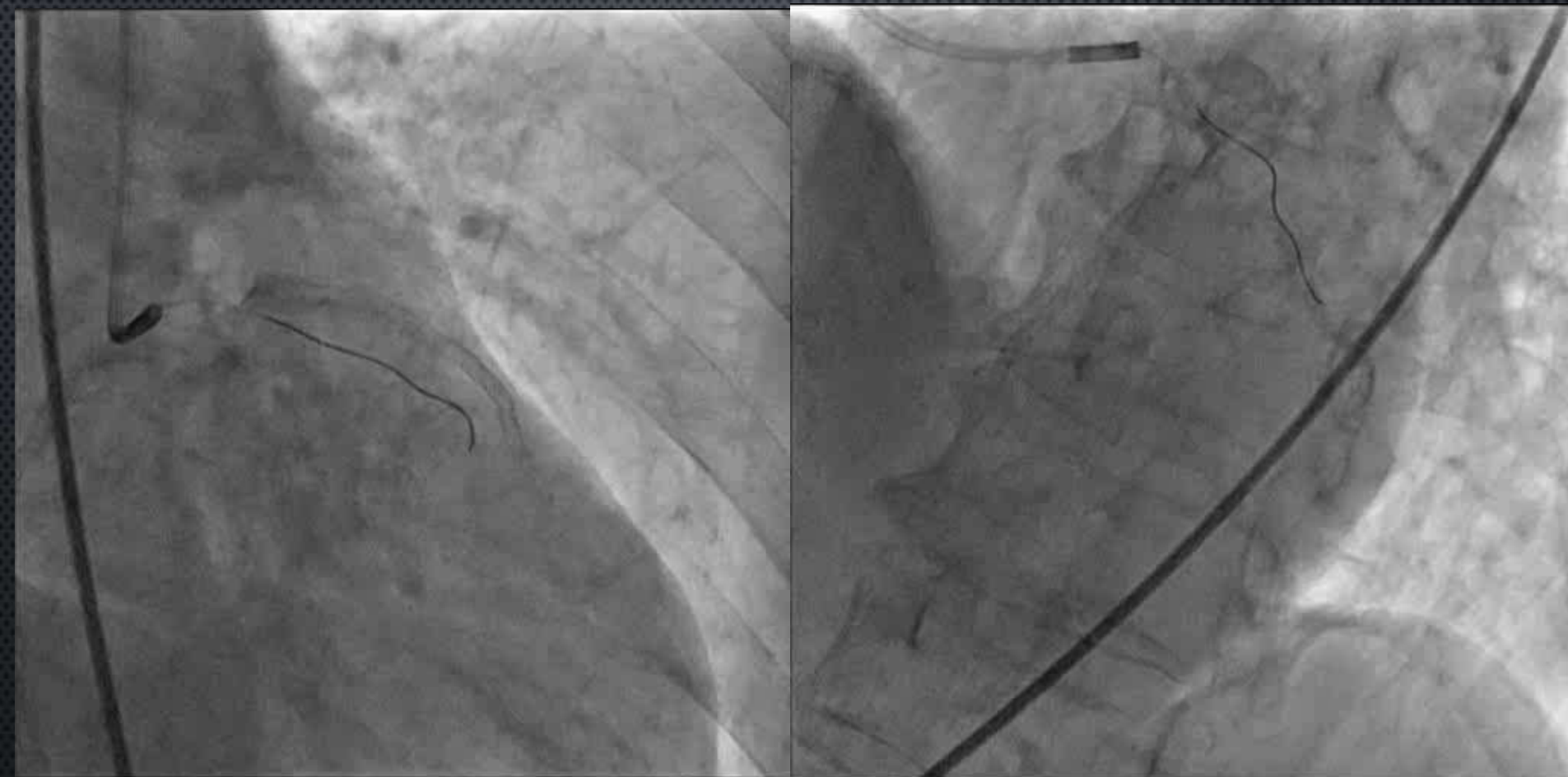
Wiring through two CTOs



Stenting



Final CAG



Summary

- Important CT information of the road to success of CTO PCI
- Route
- Diameter
- Entry point
- Calcium distribution

CCIT Conference
Best Performance of Cardiac CT
Working group