

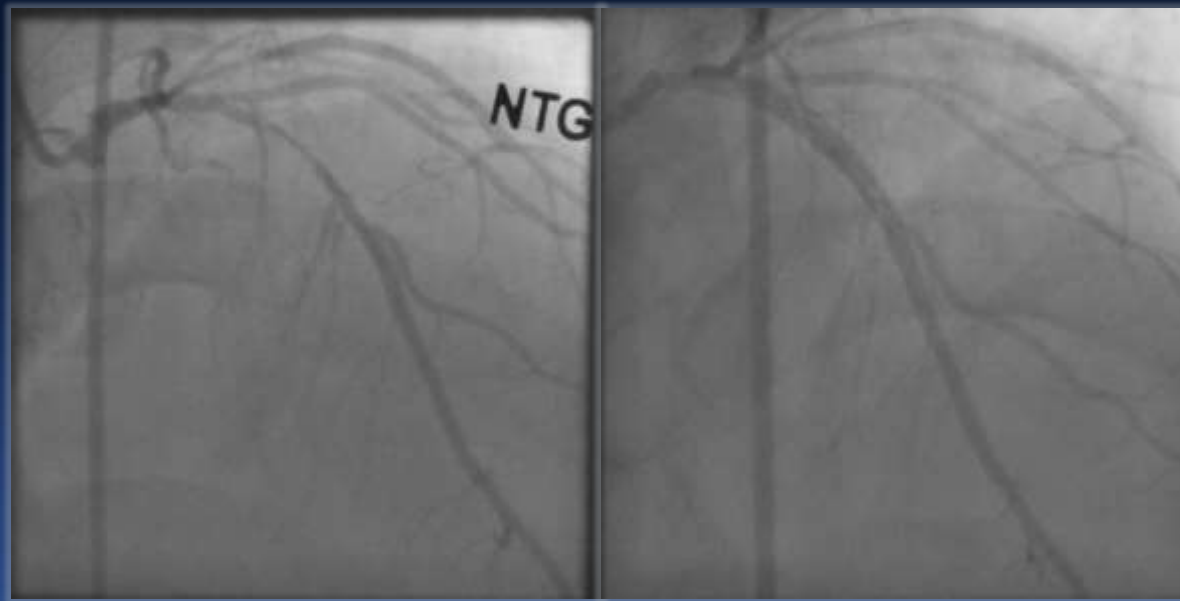
Regression and Progression of Vulnerable Plaques : Serial OCT evaluation

Mineok Chang MD.

University of Ulsan College of Medicine, Heart Institute
Asan Medical Center, Seoul, Korea

CASE 1 40 year-old Male

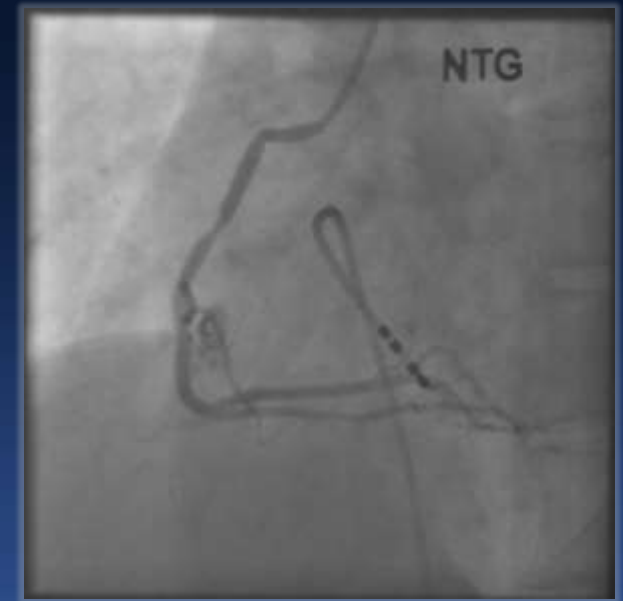
- Hypertension, Hyperlipidemia, Ex-smoker, BMI 27
- Unstable angina



LAD FFR 0.66

Nobori 3.5 x 24 mm

Nobori 3.0 x 18 mm



RCA FFR 0.88

Rosuvastatin 40mg

Life style modification

After 1 year of Optimal medical treatment with Lifestyle modification...

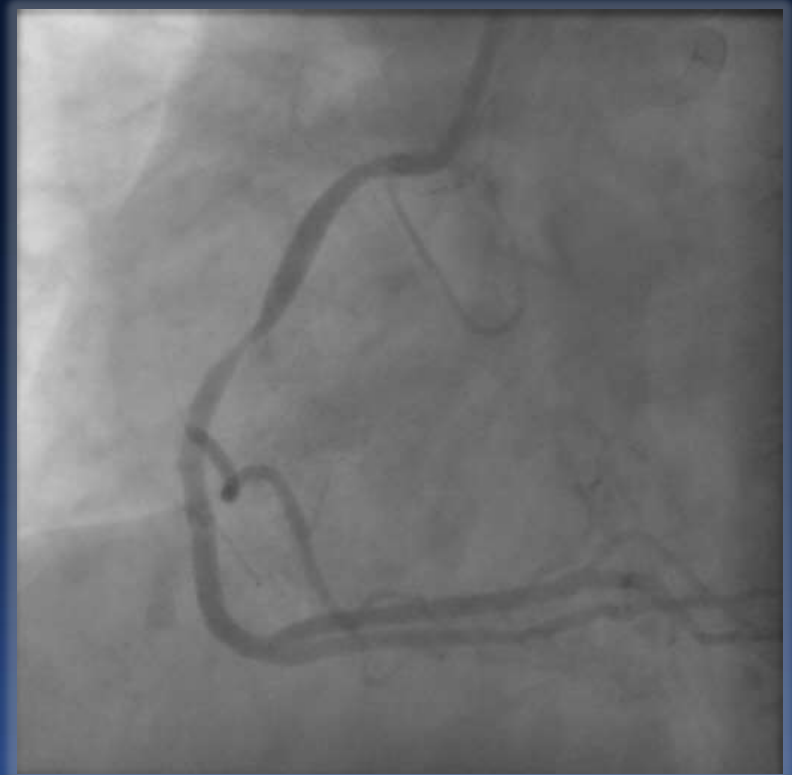


	2011/10/12	2012/9/14
Clinical symptom	Unstable angina	Asymptomatic
Body weight (Kg)	83.5	87.6
T. cholesterol (mg/dl)	189	114
HDL-cholesterol (mg/dl)	42	44
LDL-cholesterol (mg/dl)	126	60
hsCRP (mg/dl)	0.08	<0.03

1 year F/U



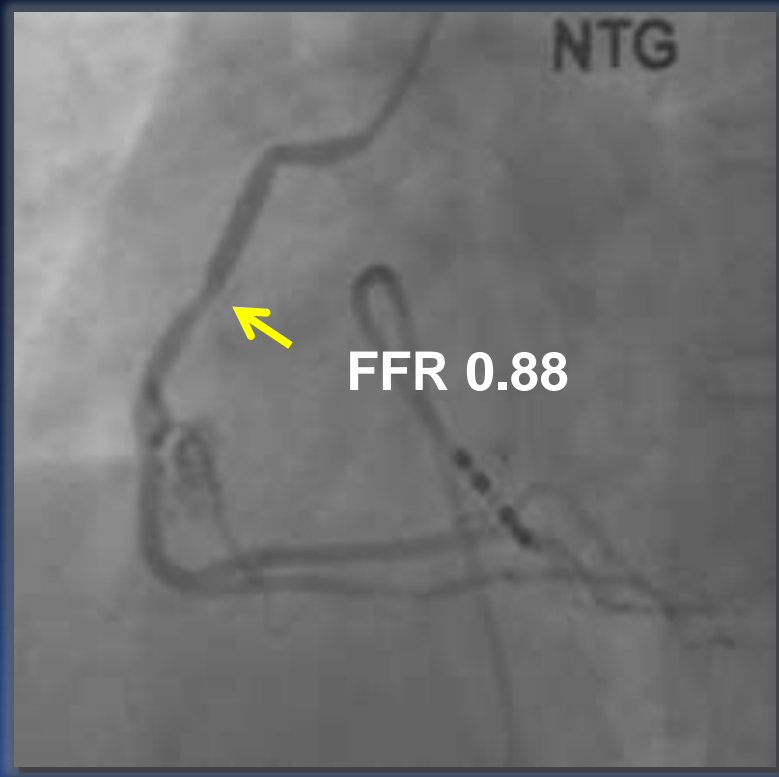
Patent LAD stents



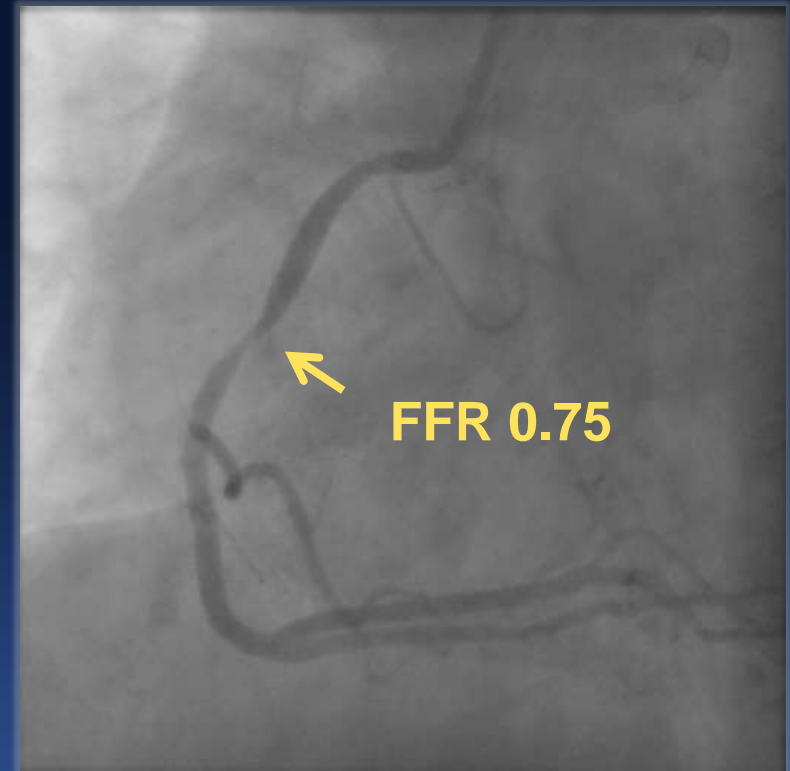
Progression on RCA

Baseline

1 year F/U

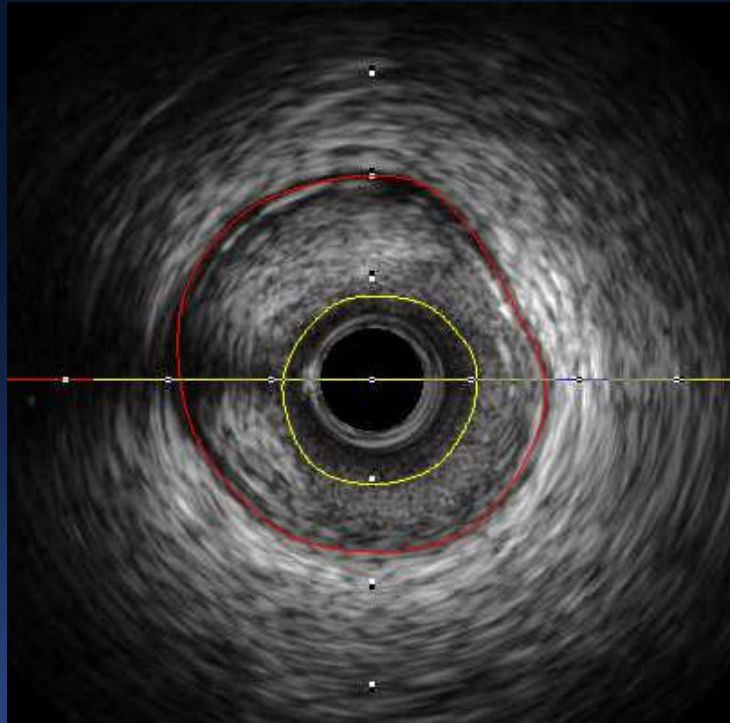


DS 50%



DS 70%

Baseline



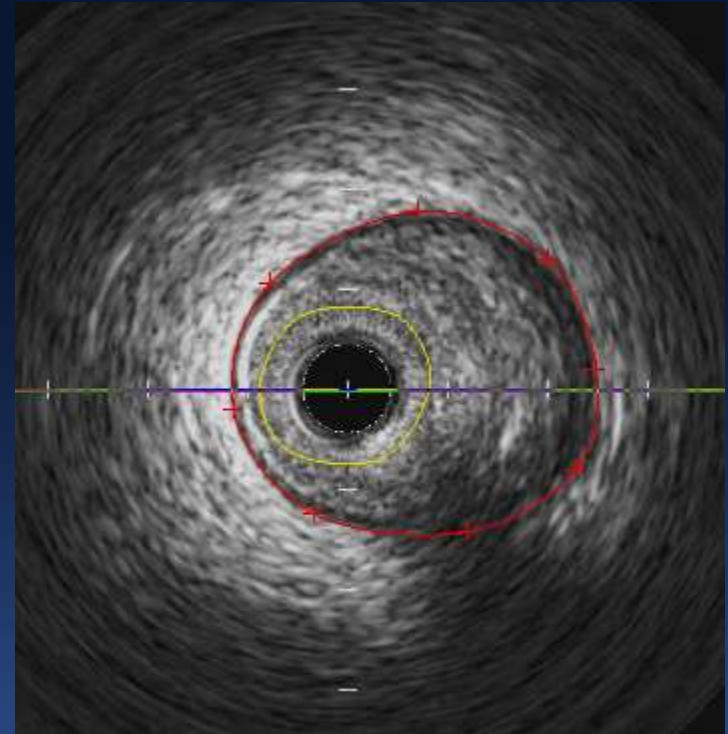
MLA 3.1 mm²

EEM 9.6 mm²

Plaque burden 67.7%

Remodeling index 0.87

1 year F/U



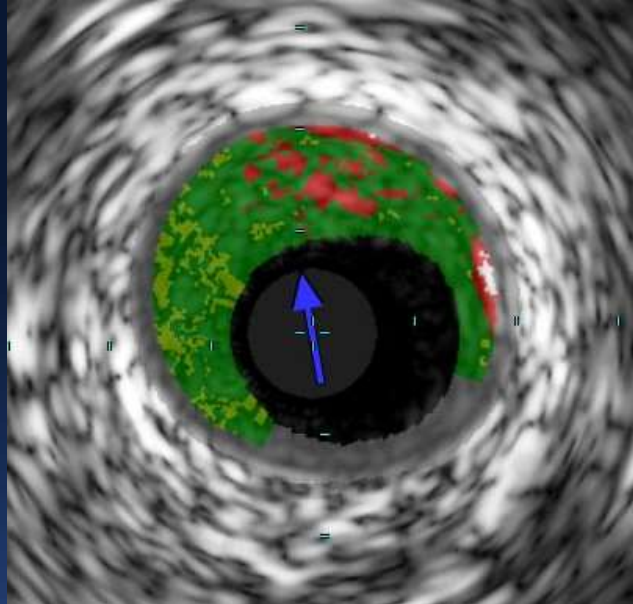
MLA 1.4 mm²

EEM 6.2 mm²

Plaque burden 77.4%

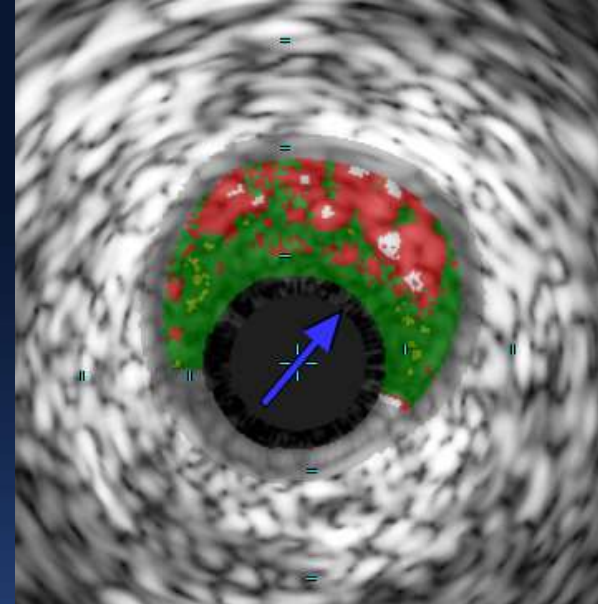
Remodeling index 0.84

Baseline



Fibrotic	69.7%
Fibrofatty	4.3%
Necrotic core	25.3%
Dense calcium	0.8%

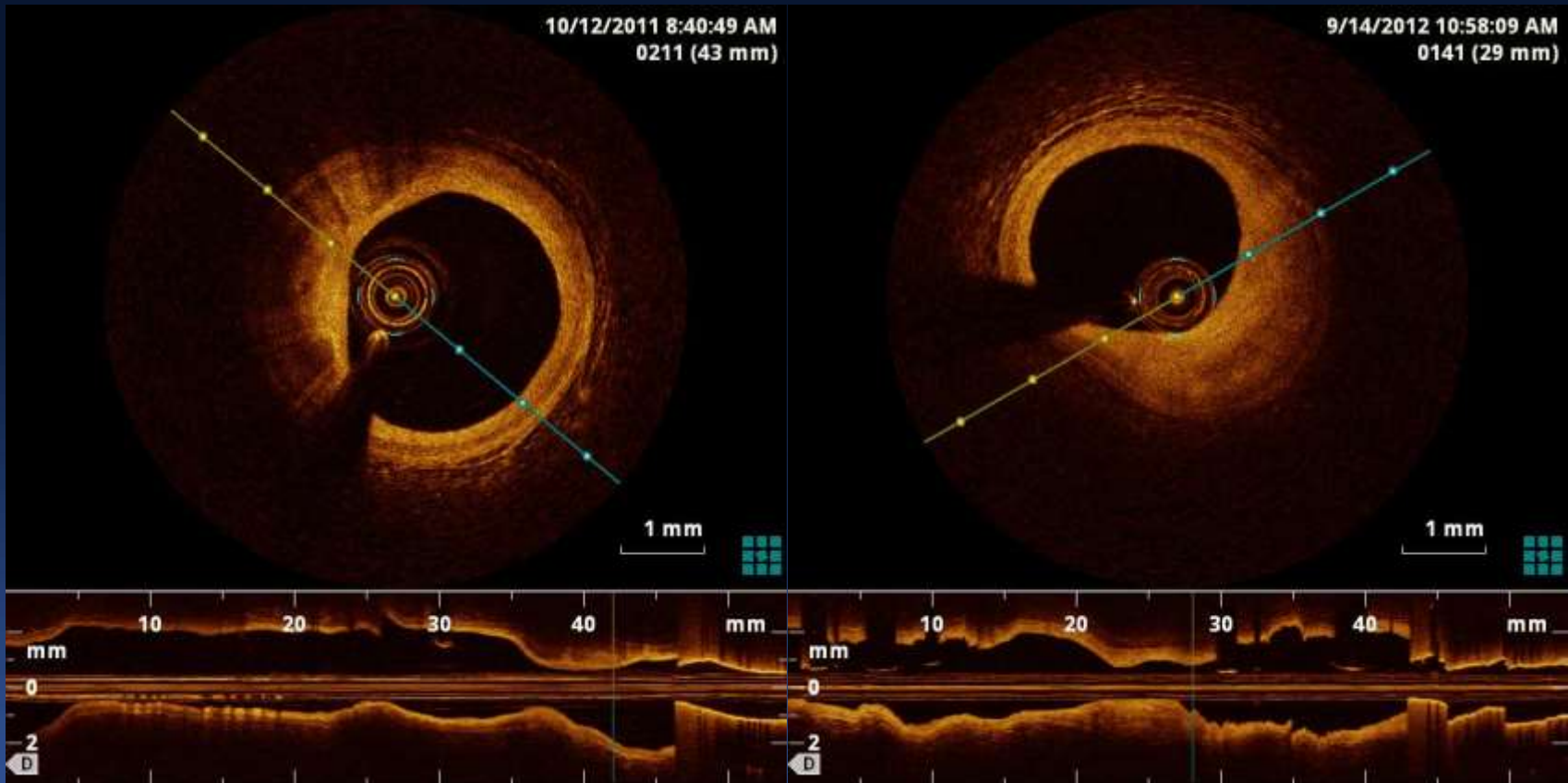
1 year F/U



Fibrotic	56.6%
Fibrofatty	4.4%
Necrotic core	37.2%
Dense calcium	1.9%

Baseline

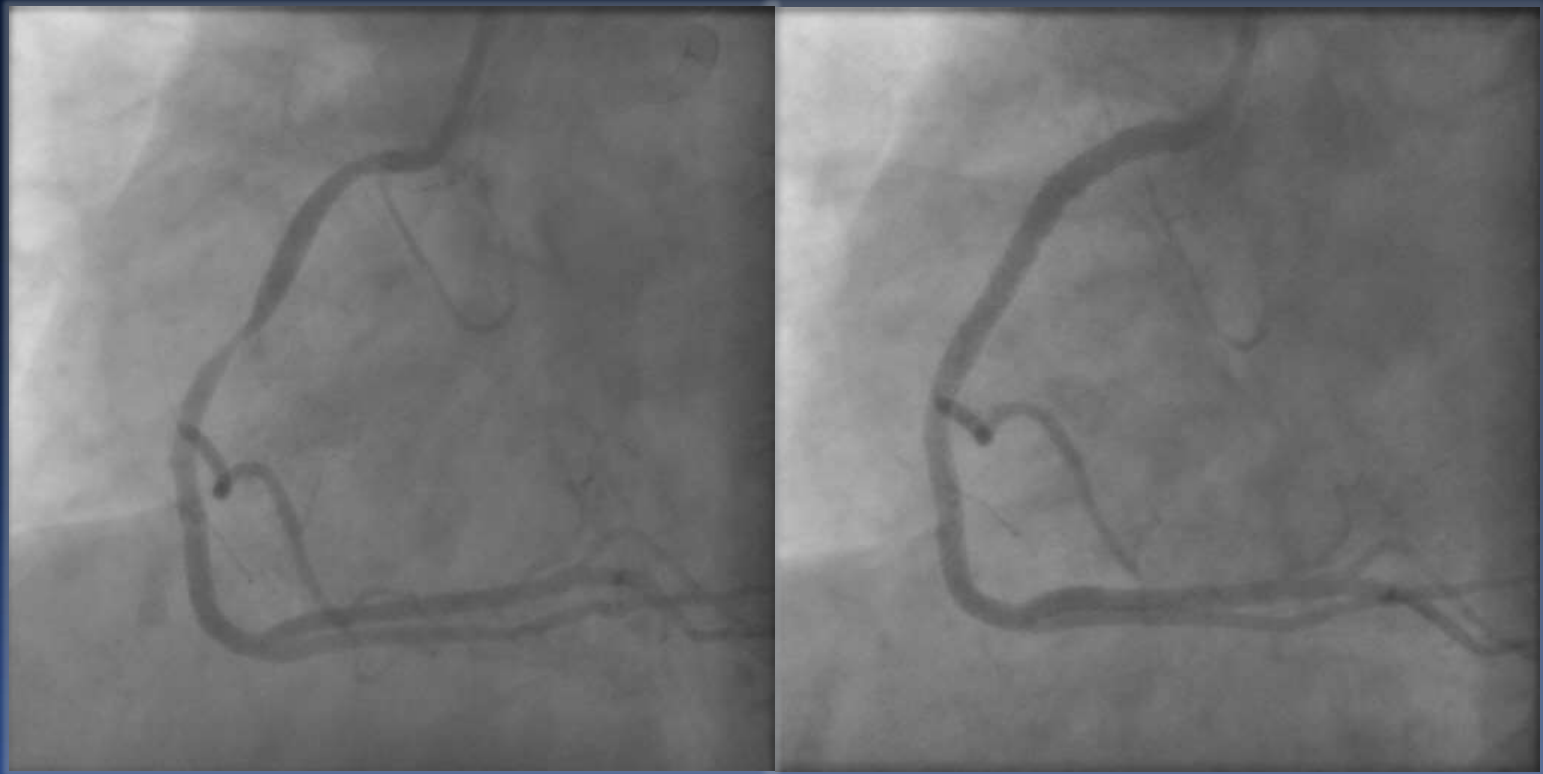
1 year F/U



**Lipidic
TCFA**

**Lipidic
Fibrous**

Coronary Intervention



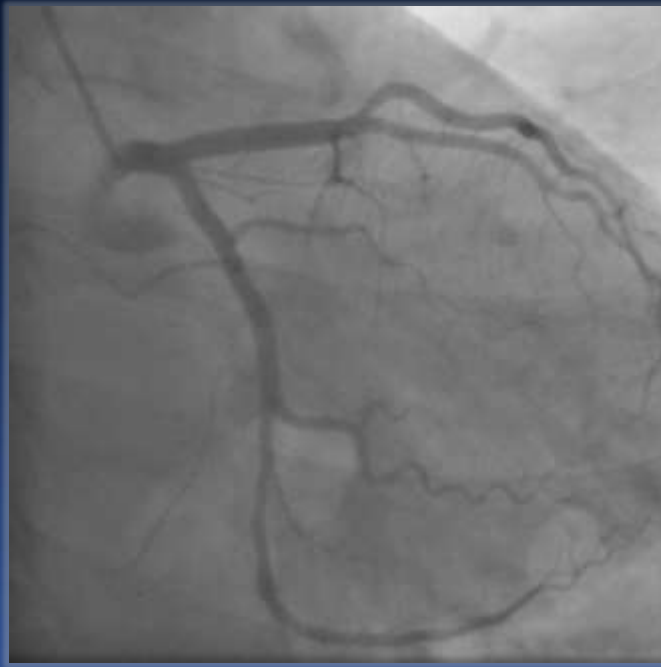
RCA FFR 0.75

Nobori 3.5 x 14 mm

Nobori 3.0 x 18 mm

CASE 2 59 year-old Male

- Hypertension, Diabetes, Ex-smoker, BMI 30.3
- Stable angina



Near normal LCA



RCA FFR 0.84

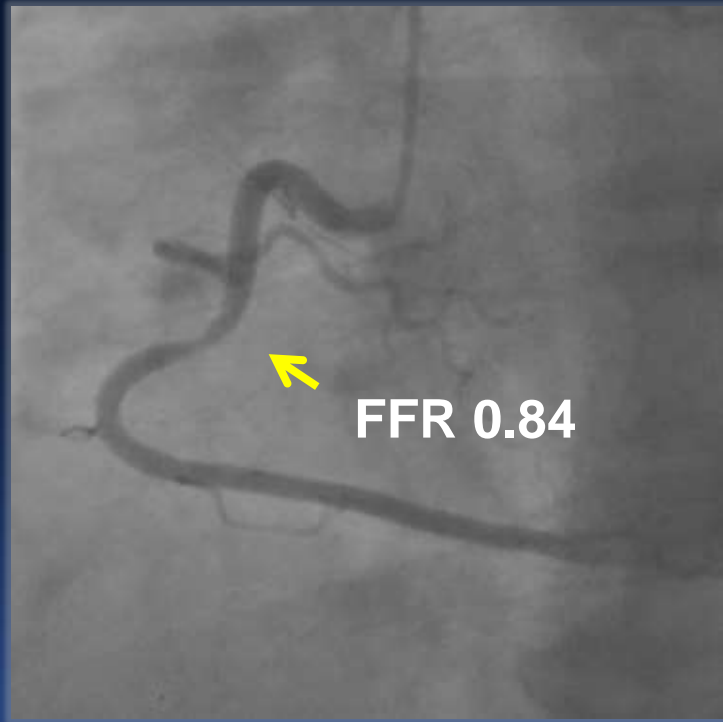
Rosuvastatin 40mg
Life style modification

After 1 year of Optimal medical treatment with Lifestyle modification...



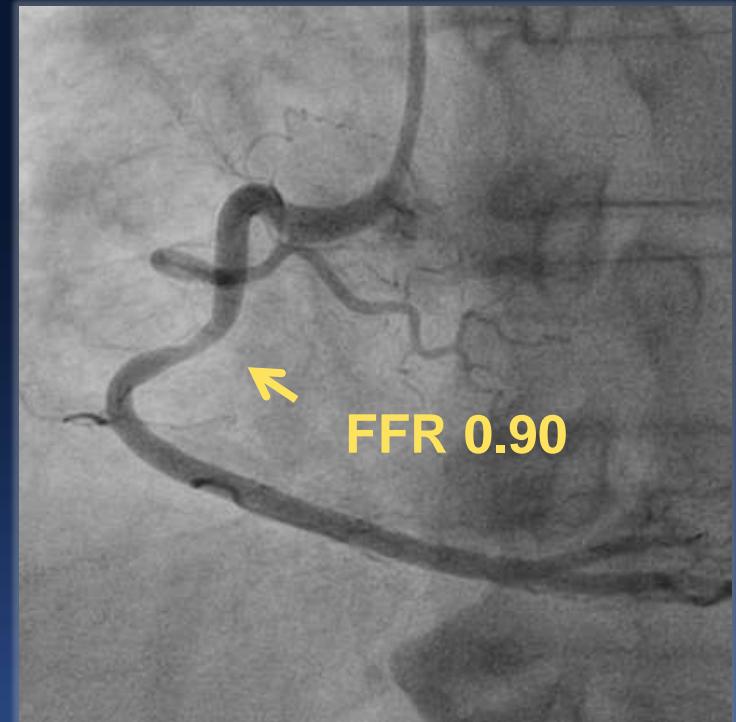
	2011/7/11	2012/6/22
Clinical symptom	Stable angina	Asymptomatic
Body weight (Kg)	74.8	70.0
T. cholesterol (mg/dl)	216	136
HDL-cholesterol (mg/dl)	54	83
LDL-cholesterol (mg/dl)	139	44
hsCRP (mg/dl)	<0.03	<0.03

Baseline



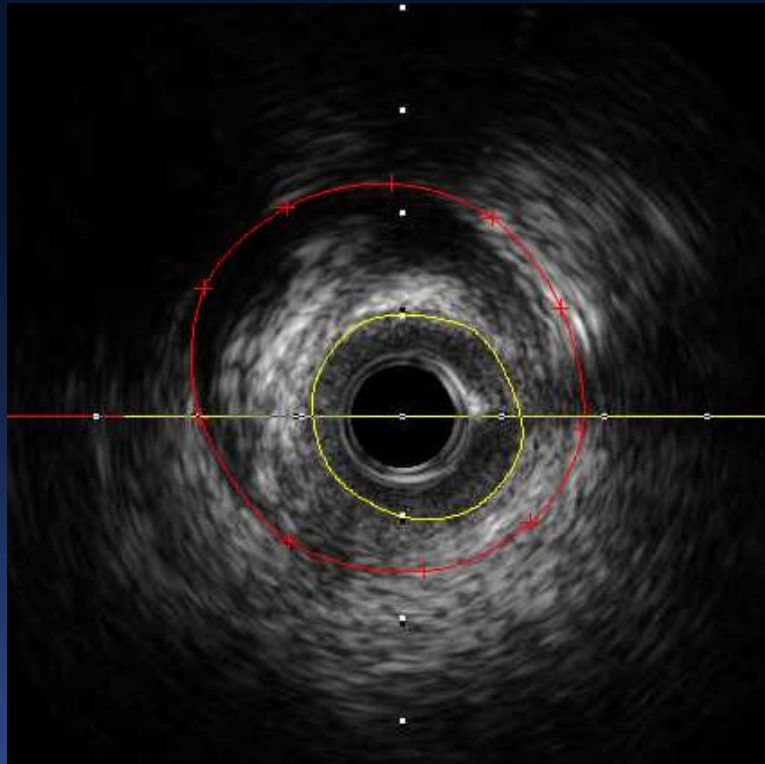
DS 60%

1 year F/U



DS 40%

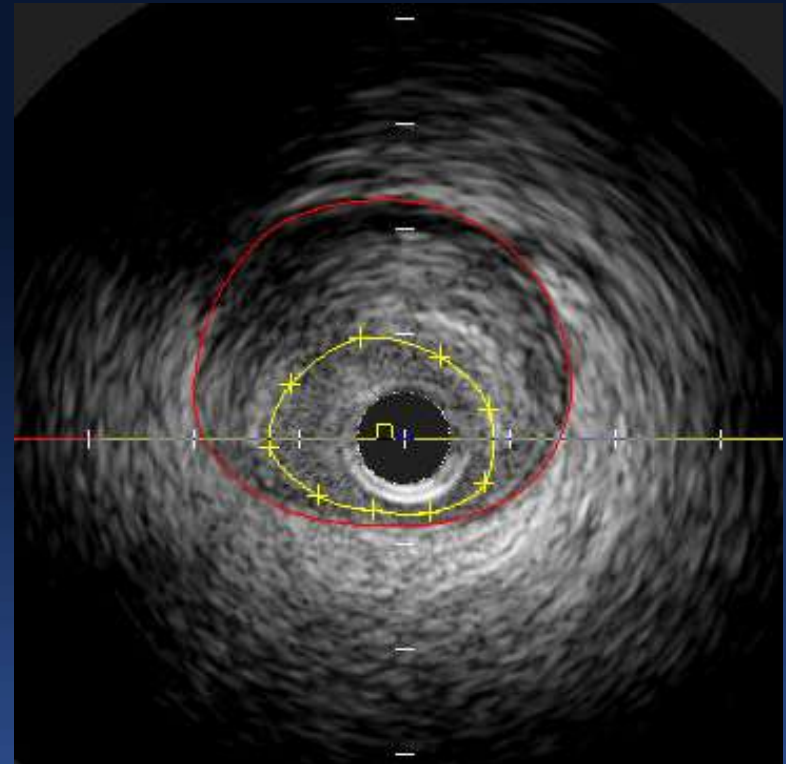
Baseline



MLA 3.1 mm²
EEM 11.2 mm²

Plaque burden 71.9%
Remodeling index 1.1

1 year F/U

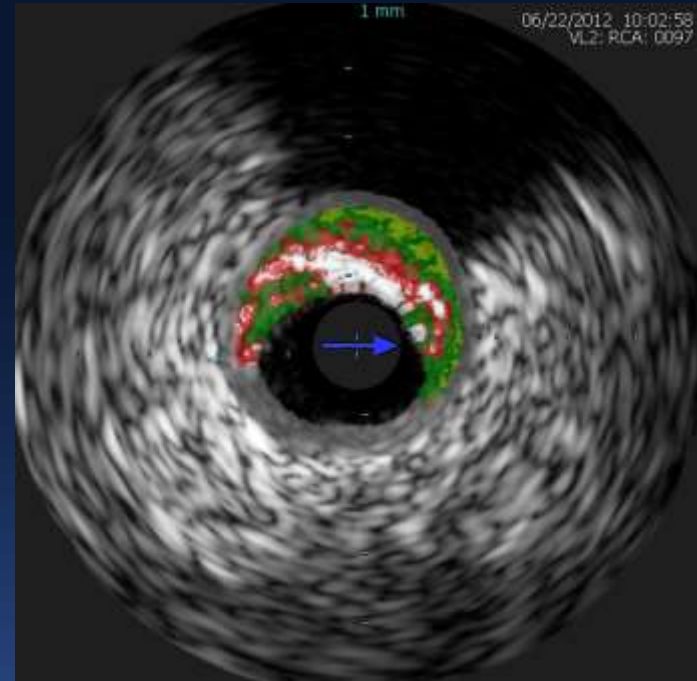
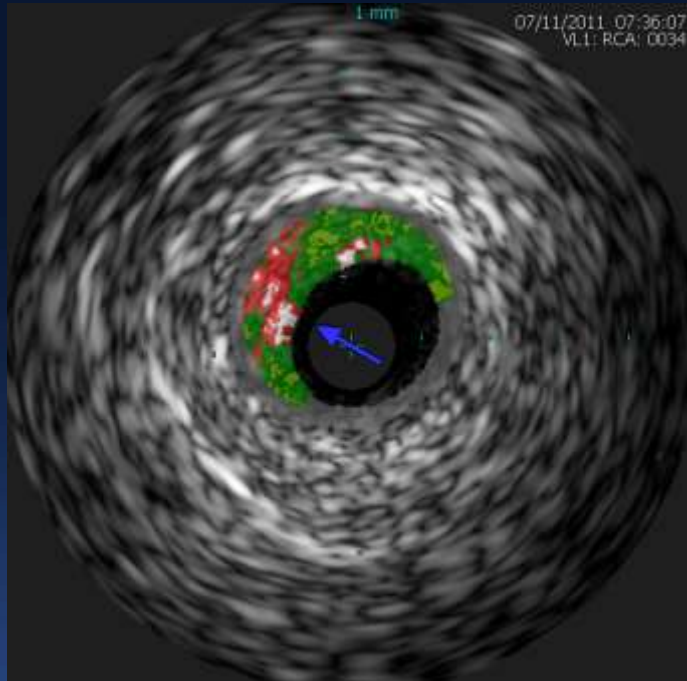


MLA 2.7 mm²
EEM 8.8 mm²

Plaque burden 69.0%
Remodeling index 0.88

Baseline

1 year F/U

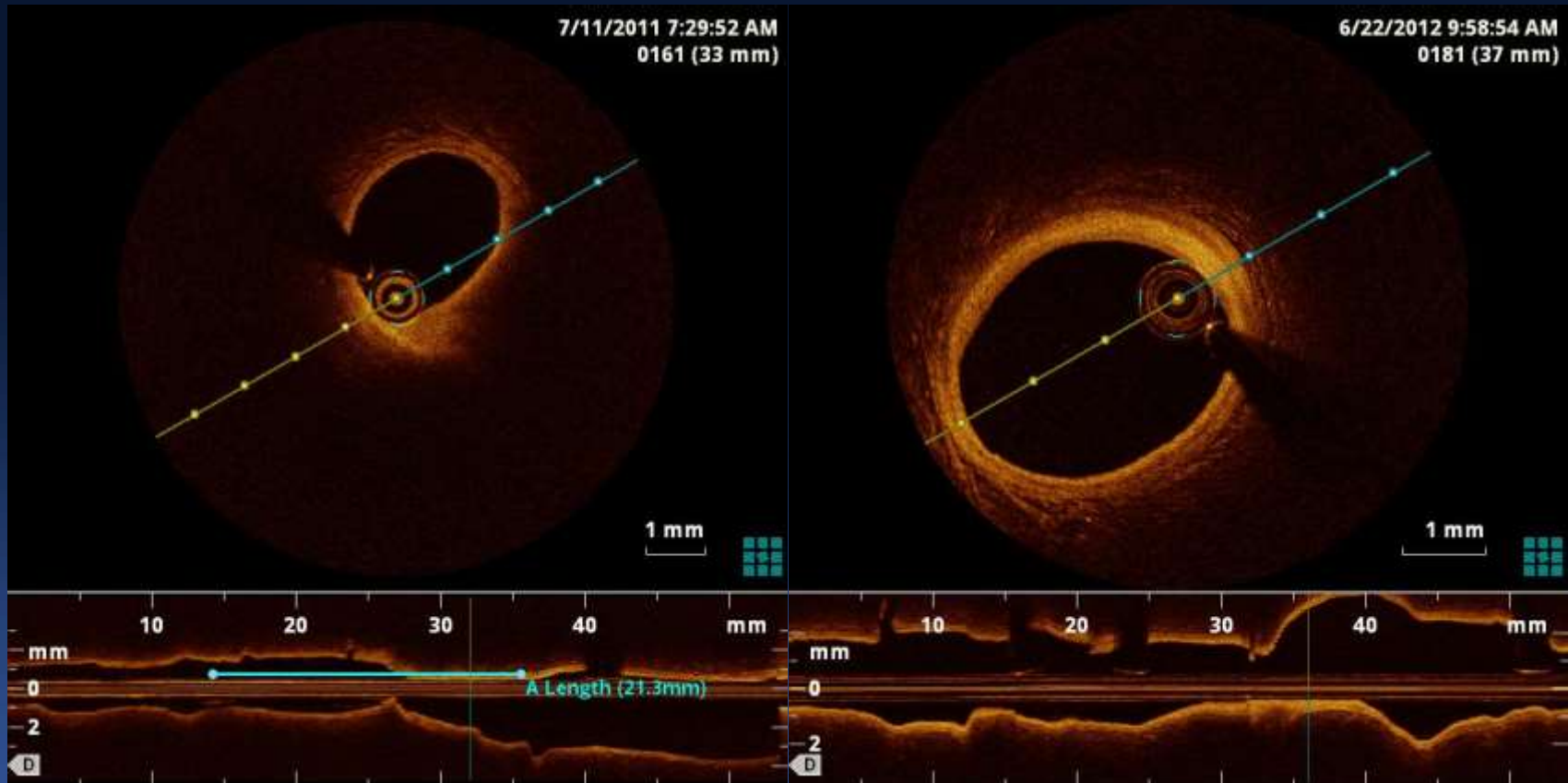


Fibrotic	51.8%
Fibrofatty	10.1%
Necrotic core	29.8%
Dense calcium	8.3%

Fibrotic	52.8%
Fibrofatty	12.1%
Necrotic core	23.8%
Dense calcium	11.3%

Baseline

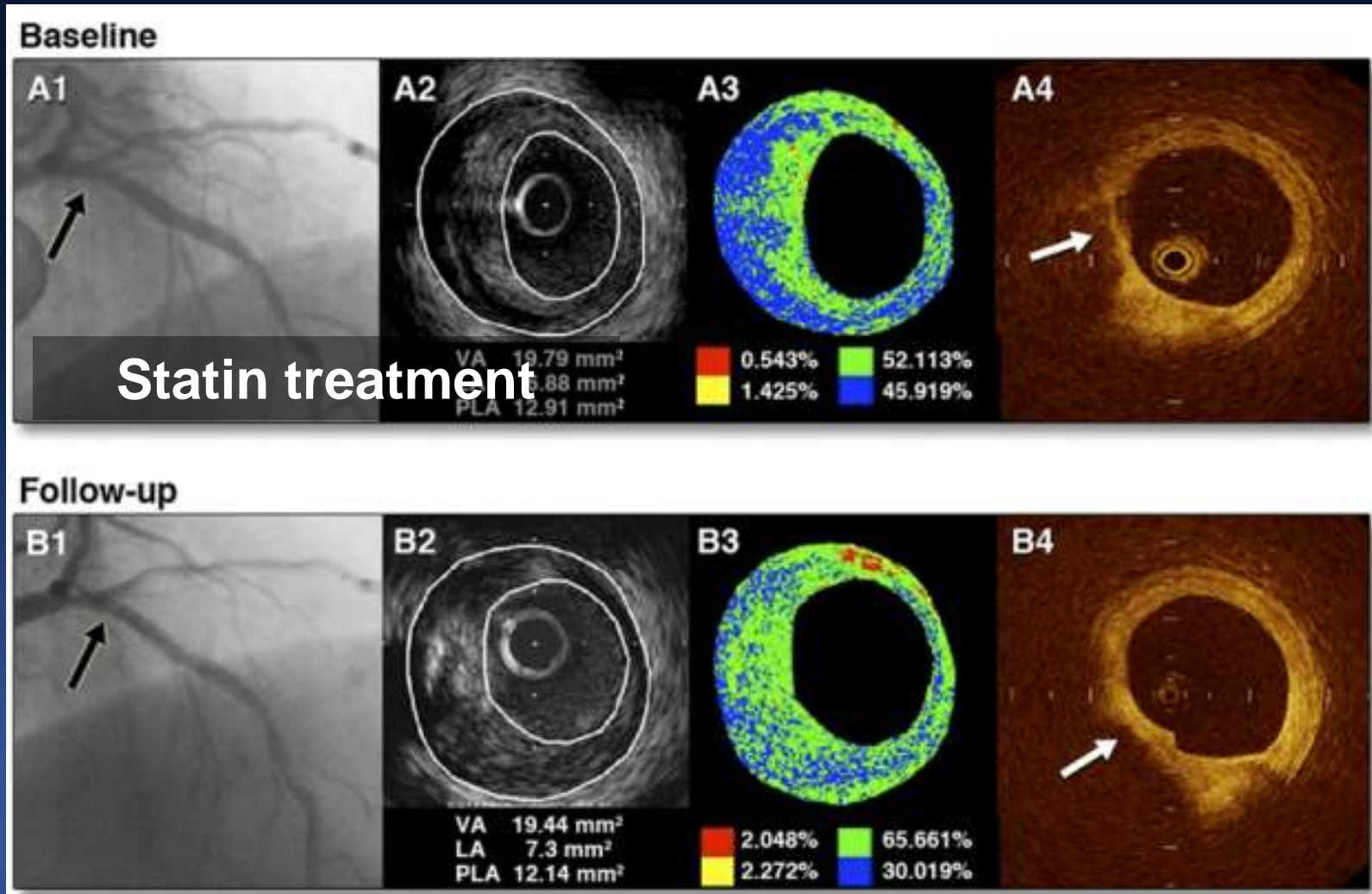
1 year F/U



Lipidic, Fibrous
TCFA
Plaque disruption with thrombus

Lipidic, Fibrous
Calcific

Statin Stabilize the Plaque



Hattori K et al. JACC Cardiovasc Imaging 2012;5:169

What makes difference ?

