

**THROMBUS EMBOLISM INTO LCX  
DURING RESCUE PCI FOR LAD  
A MORTALITY**

Dr Uday B Khanolkar

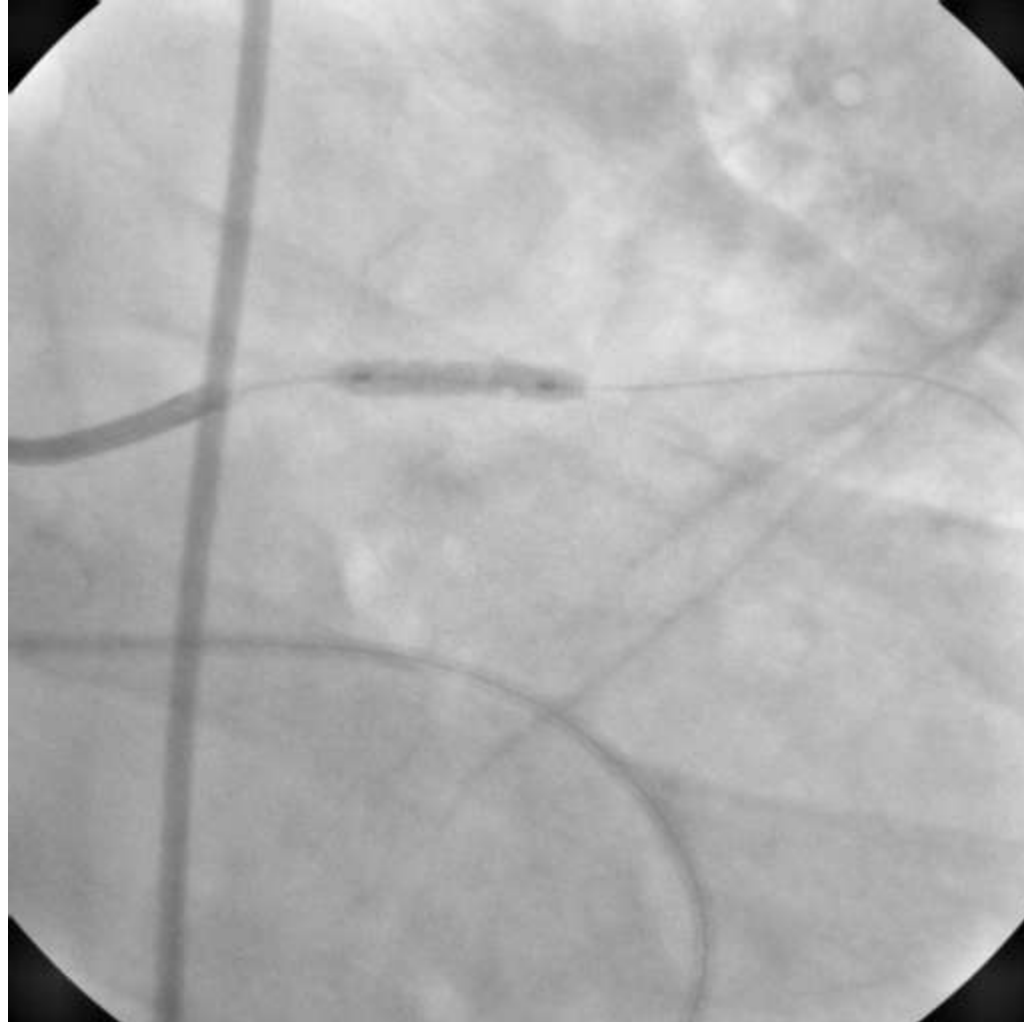
Apollo Victor Hospital

Goa, India

















# “Back-Squeezing” of the Clot: An Unusual Complication of Primary Coronary Angioplasty

Walter J. Desmet,\* MD, PhD, Joseph Dens, MD, and Jan Piessens, MD, PhD, FSCAI

Distal coronary embolism of thrombotic material is quite common in the setting of primary coronary angioplasty for evolving acute myocardial infarction. Embolization to another coronary artery is, however, much more uncommon. We report on a case in which a large thrombus migrated from the proximal left anterior descending artery (LAD) to the proximal left circumflex artery (CX) during inflation of the dilatation balloon. The putative mechanism was retrograde expulsion of the thrombus by the deploying balloon. *Cathet. Cardiovasc. Diagn.* 42:64–67, 1997. © 1997 Wiley-Liss, Inc.

- Mortality occurred due to embolization of thrombus in to LCX
- This may have been prevented had a wire been kept in LCX before thromboaspiration
- This could have helped in immediate thromboaspiration in LCX