

BBC ONE

David Hildick-Smith

Sussex Cardiac Centre

Brighton, UK

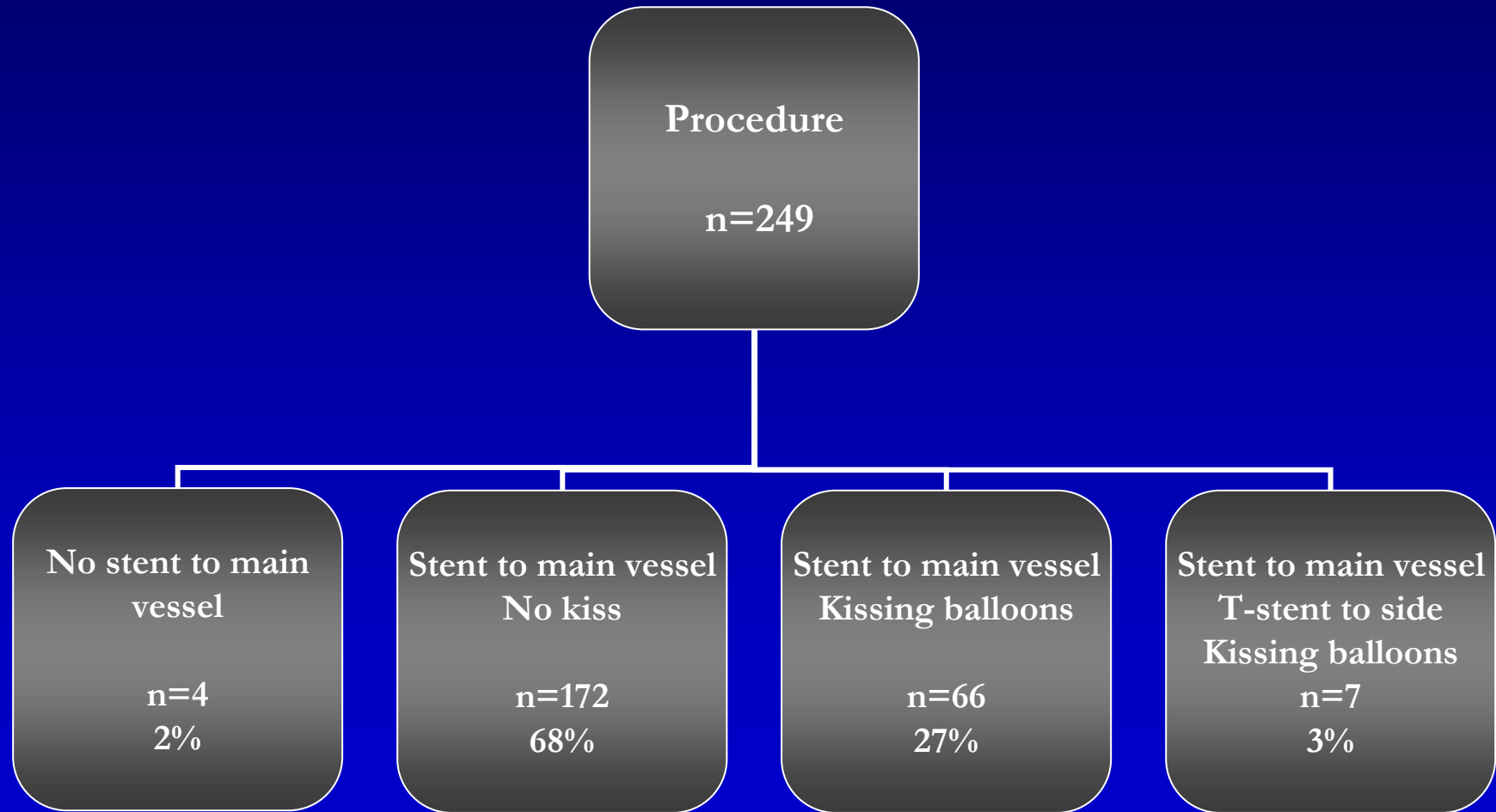
on behalf of the BBC ONE Investigators

PRIMARY ENDPOINT

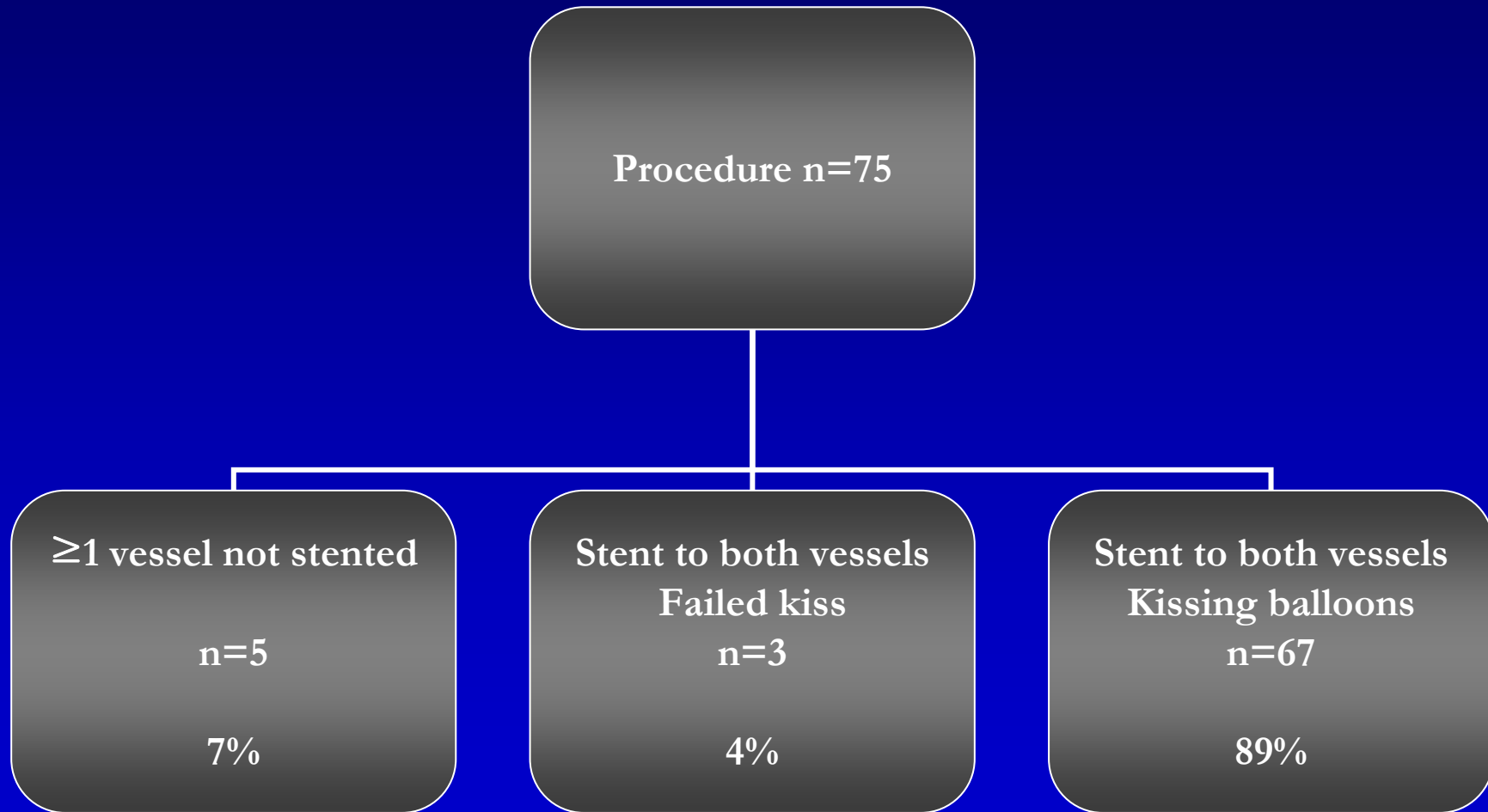
composite at 9 months of:

- Death
 - Target vessel failure
 - Myocardial infarction

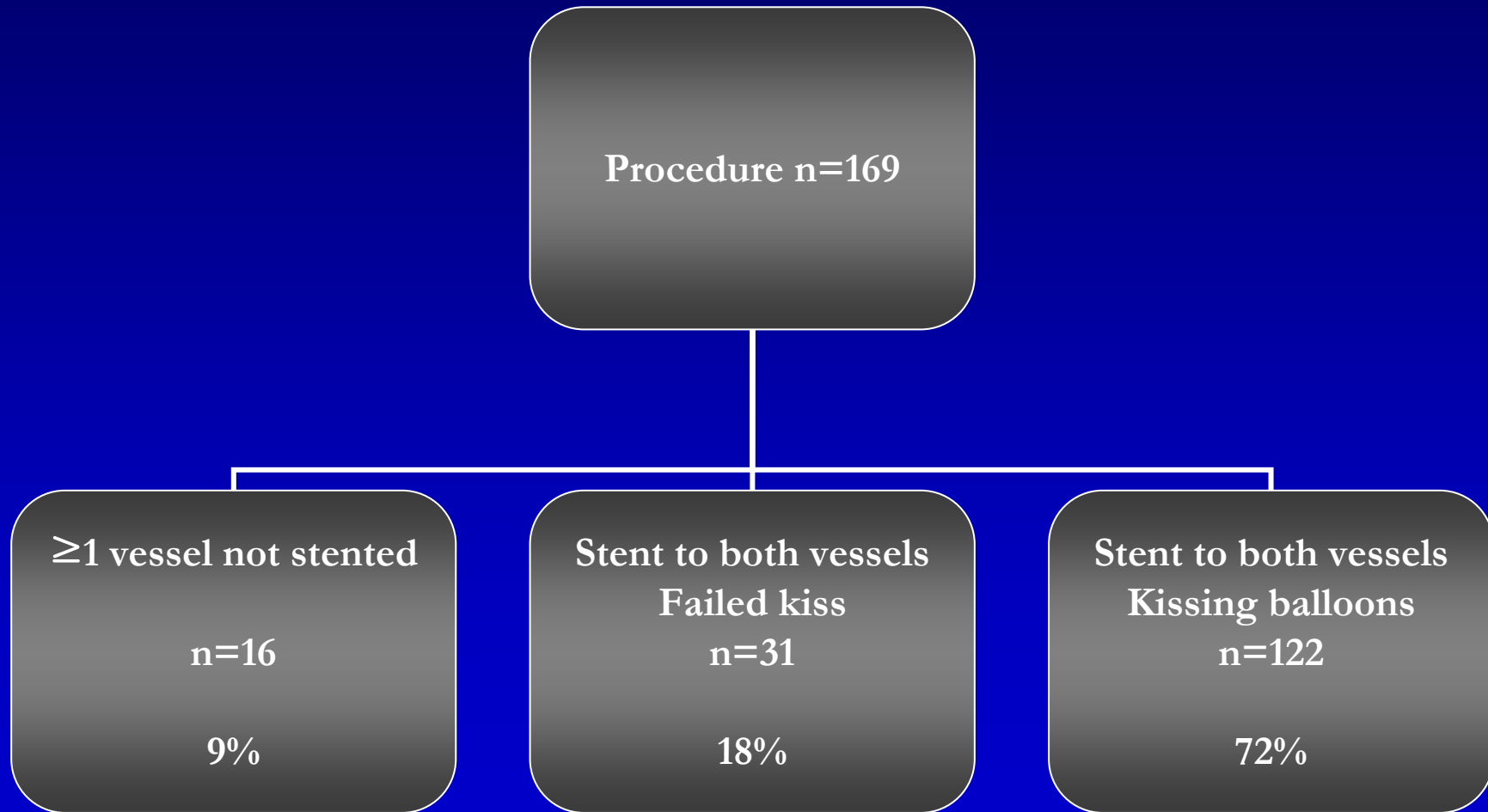
SIMPLE



COMPLEX (Culotte)



COMPLEX (Crush)



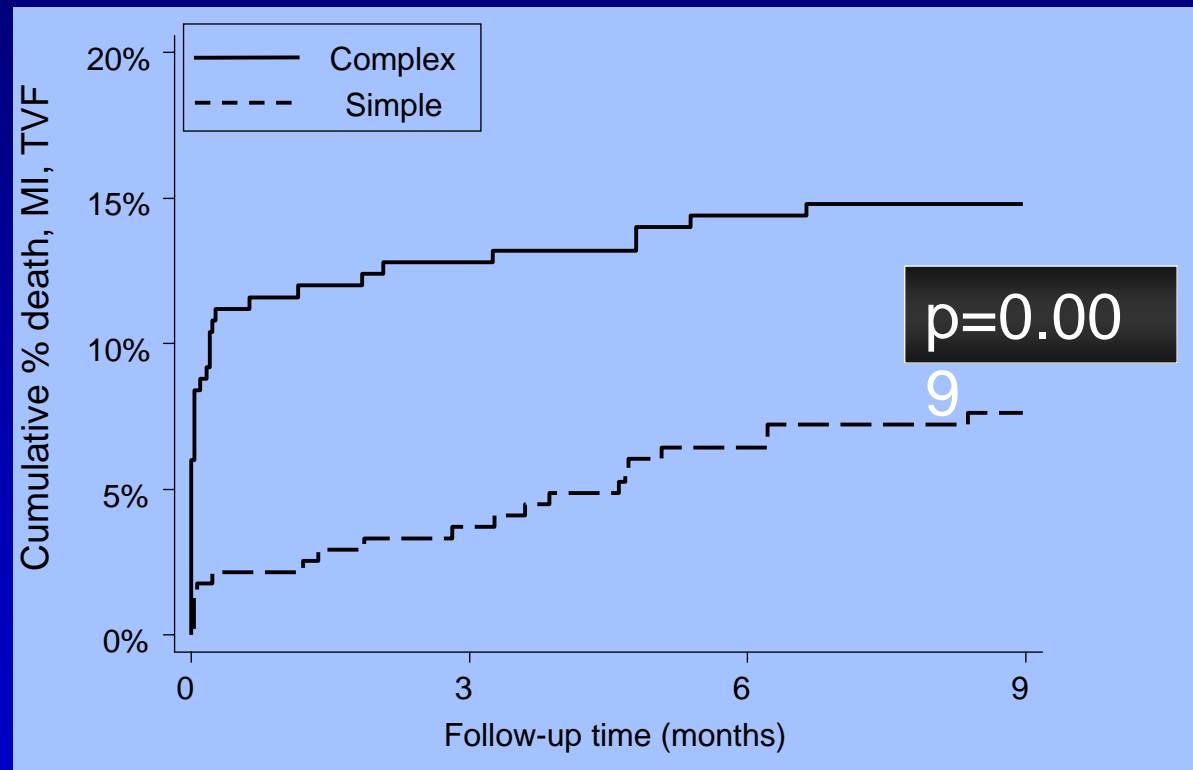
PRIMARY ENDPOINT

Composite (9months) Death, MI, TVF

	<u>Complex</u>	<u>Simple</u>	P value
Death	2 (0.8%)	1 (0.4%)	-
Myocardial infarction	28 (11.2%)	9 (3.6%)	-
Target vessel failure	18 (7.2%)	14 (5.6%)	-
Primary endpoint	38 (15.2%)	20 (8.0%)	0.009 HR 2.0 (1.2 to 3.5)

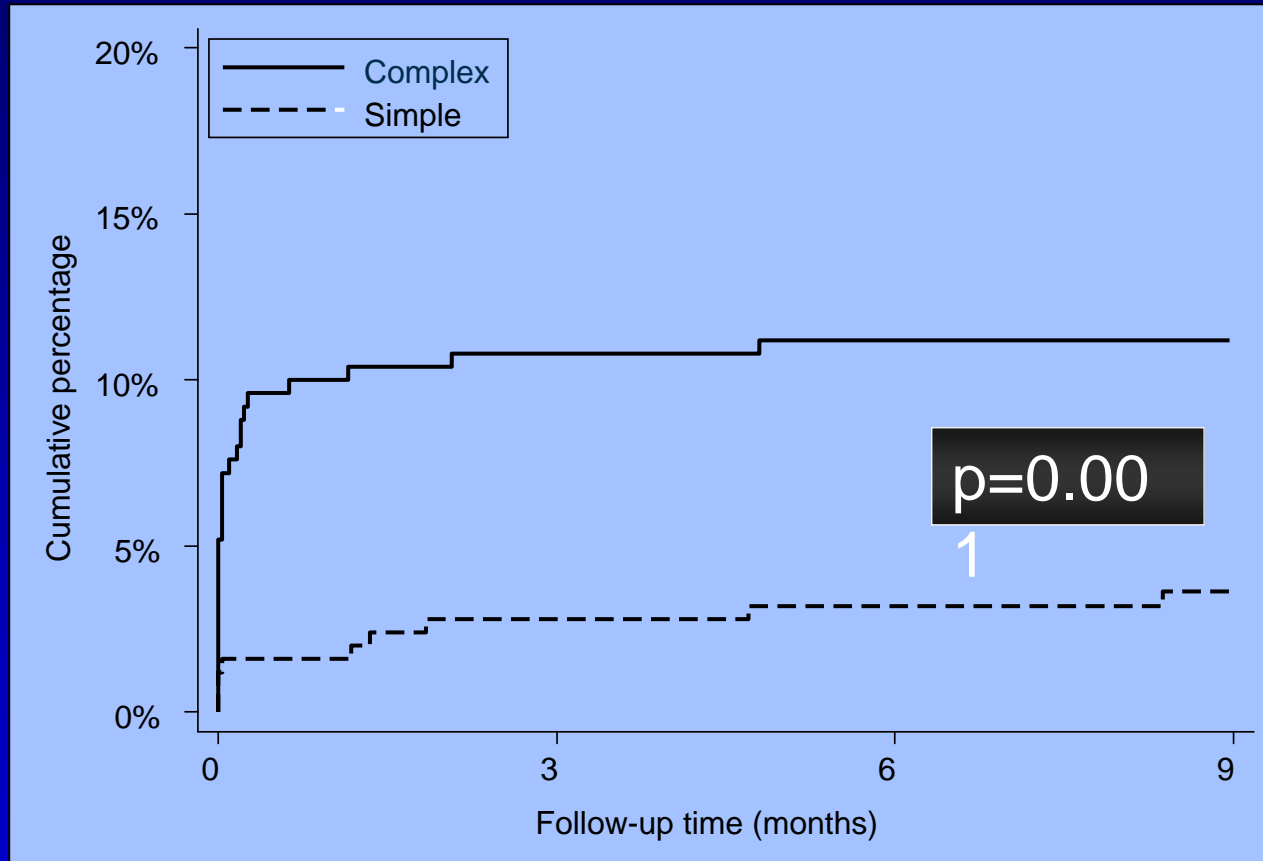
PRIMARY ENDPOINT

Death, MI, TVF

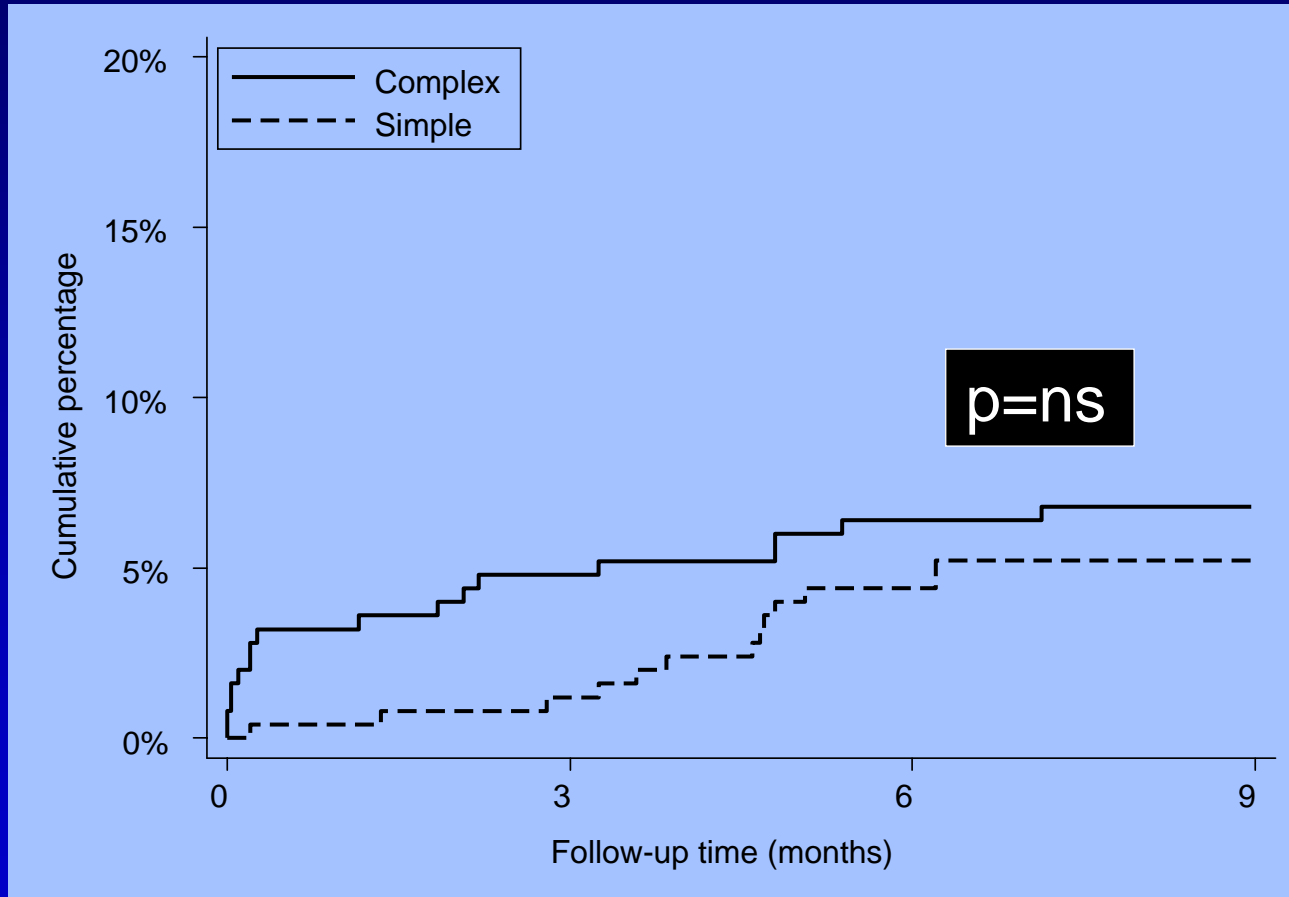


Complex	250	218	214	208
Simple	250	241	234	227

MYOCARDIAL INFARCTION



TARGET VESSEL FAILURE



CONCLUSIONS

- For unselected bifurcation lesions, a stepwise provisional T stent strategy is superior to a systematic complex strategy in all domains:
 - procedural success
 - procedural complications
 - 9-month MACE