



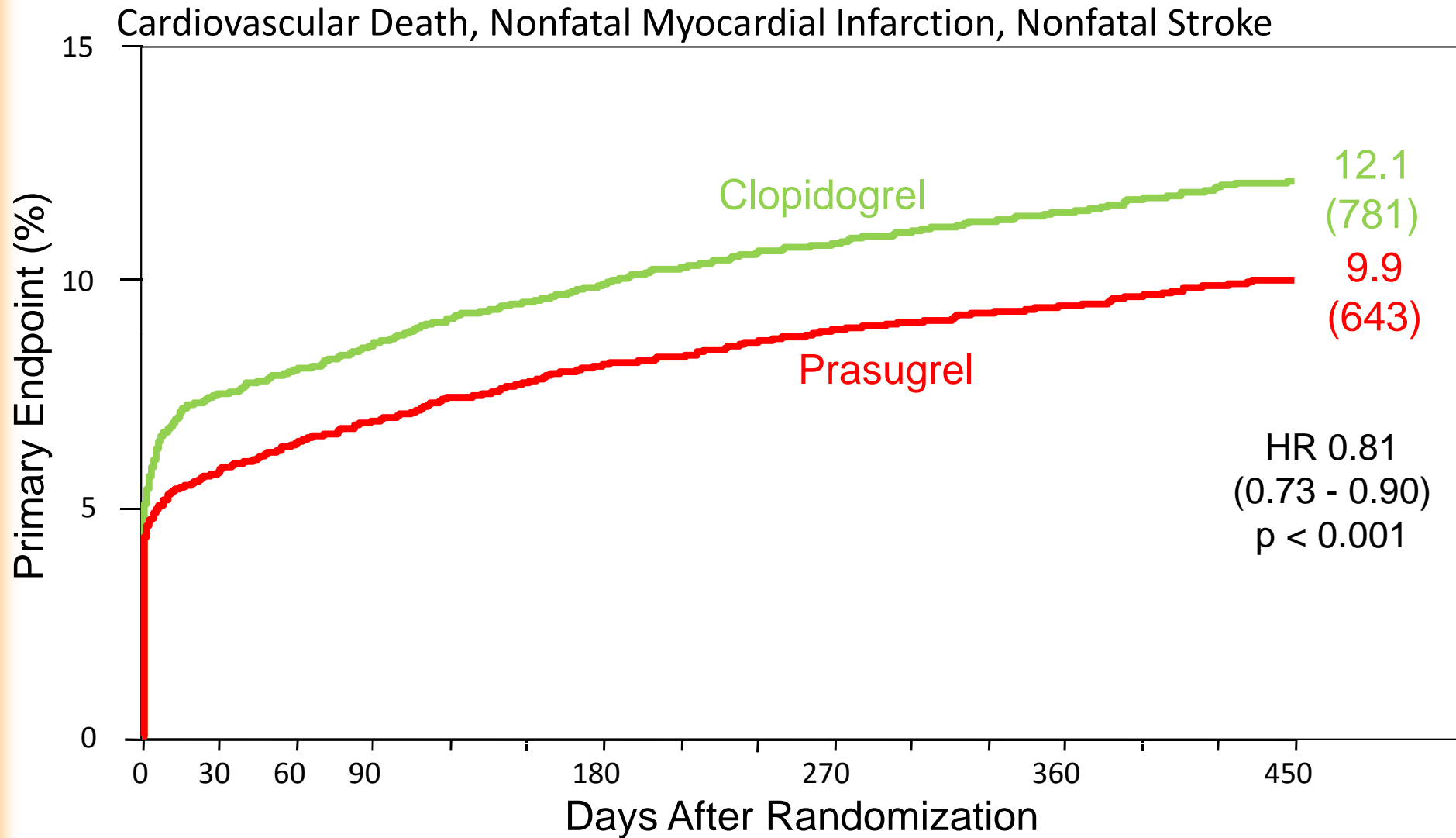
Counterpoint:

**The Incremental Benefit Is Small and
the Cost-Disadvantages of New
DAPT Approaches Are Prohibitive**

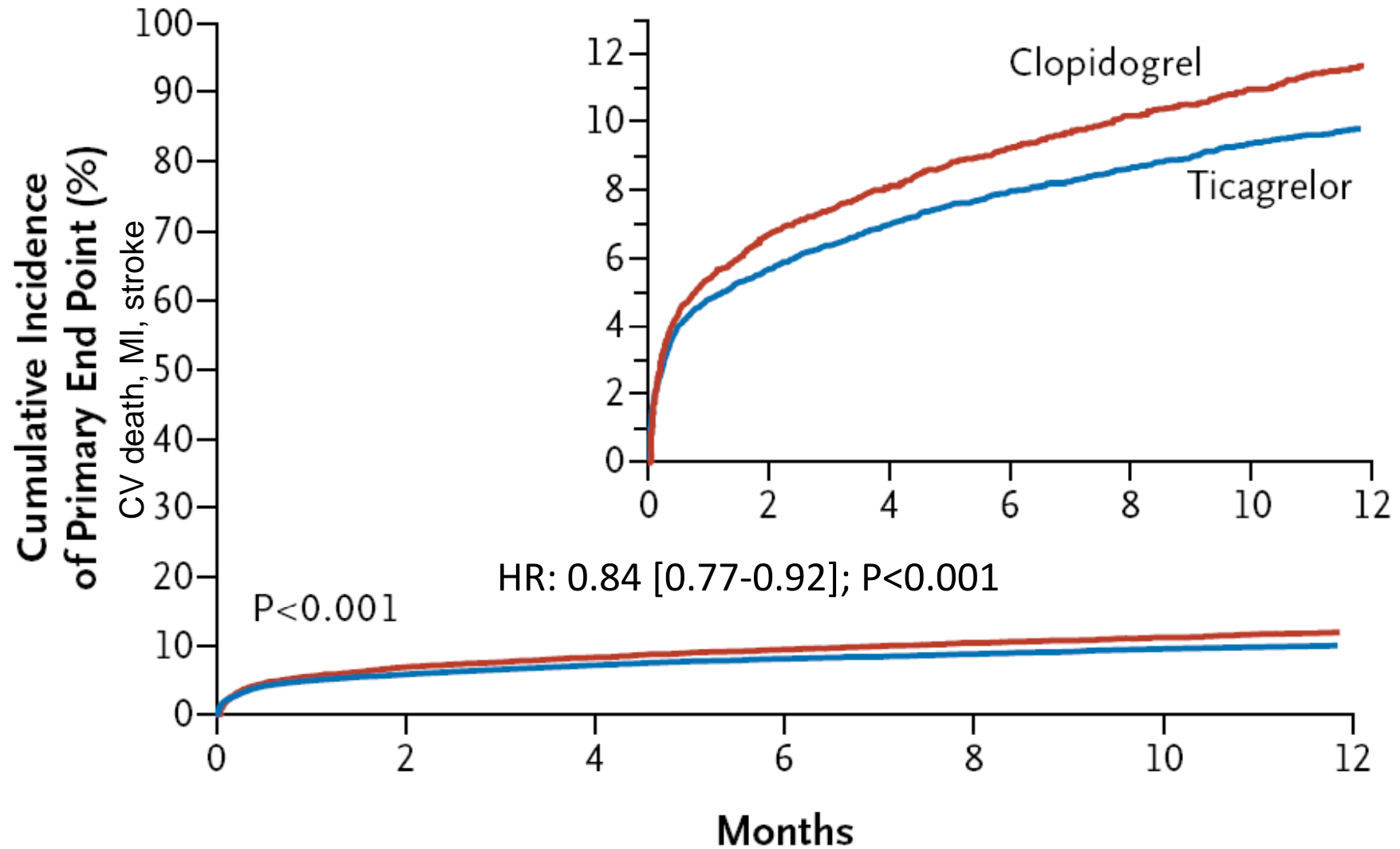
Adnan Kastrati

Deutsches Herzzentrum, Munich,
Germany

Prasugrel & Ticagrelor are overall superior to clopidogrel in patients with ACS planned for invasive treatment



Prasugrel & Ticagrelor are overall superior to clopidogrel in patients with ACS planned for invasive treatment



Therapy costs with clopidogrel, prasugrel and ticagrelor in Germany

	4 weeks (€)	1 year (€)
Clopidogrel (branded)	84	1,095
Clopidogrel (generic)	20 to 55	217 to 646
Prasugrel	88	1,129
Ticagrelor	99	1,341

Some limitations of new ADP-receptor antagonists that may still leave room for clopidogrel in ACS

- Not equally effective across various subsets
- Increased risk of bleeding
- Superiority decreases over time

Warning!

Commentary

Debate: Subgroup analyses in clinical trials – fun to look at, but don't believe them!

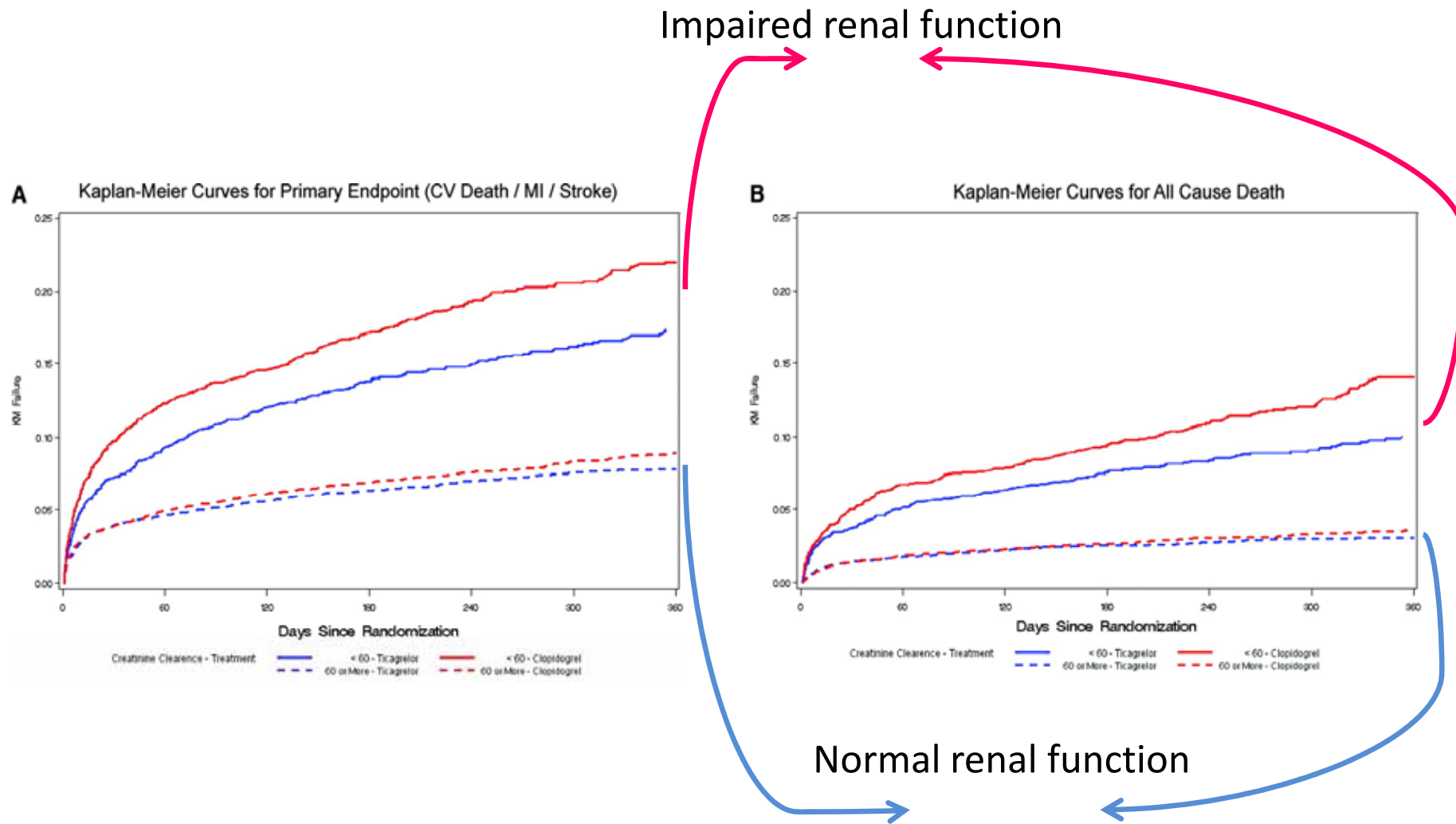
Peter Sleight

John Radcliffe Hospital, Oxford, UK

Curr Control Trials Cardiovasc Med 2000, 1:25–27

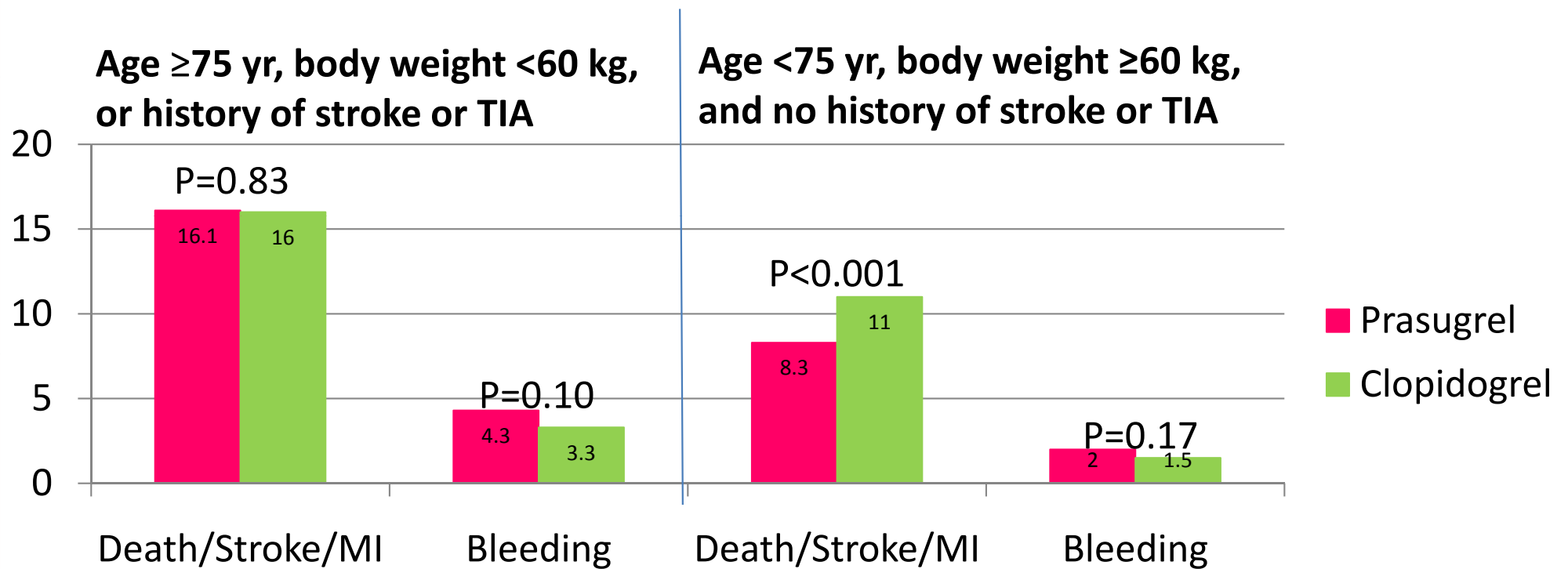
New ADP-receptor antagonists: Few examples of lessons from subgroups

Ticagrelor vs. Clopidogrel in relation to renal function

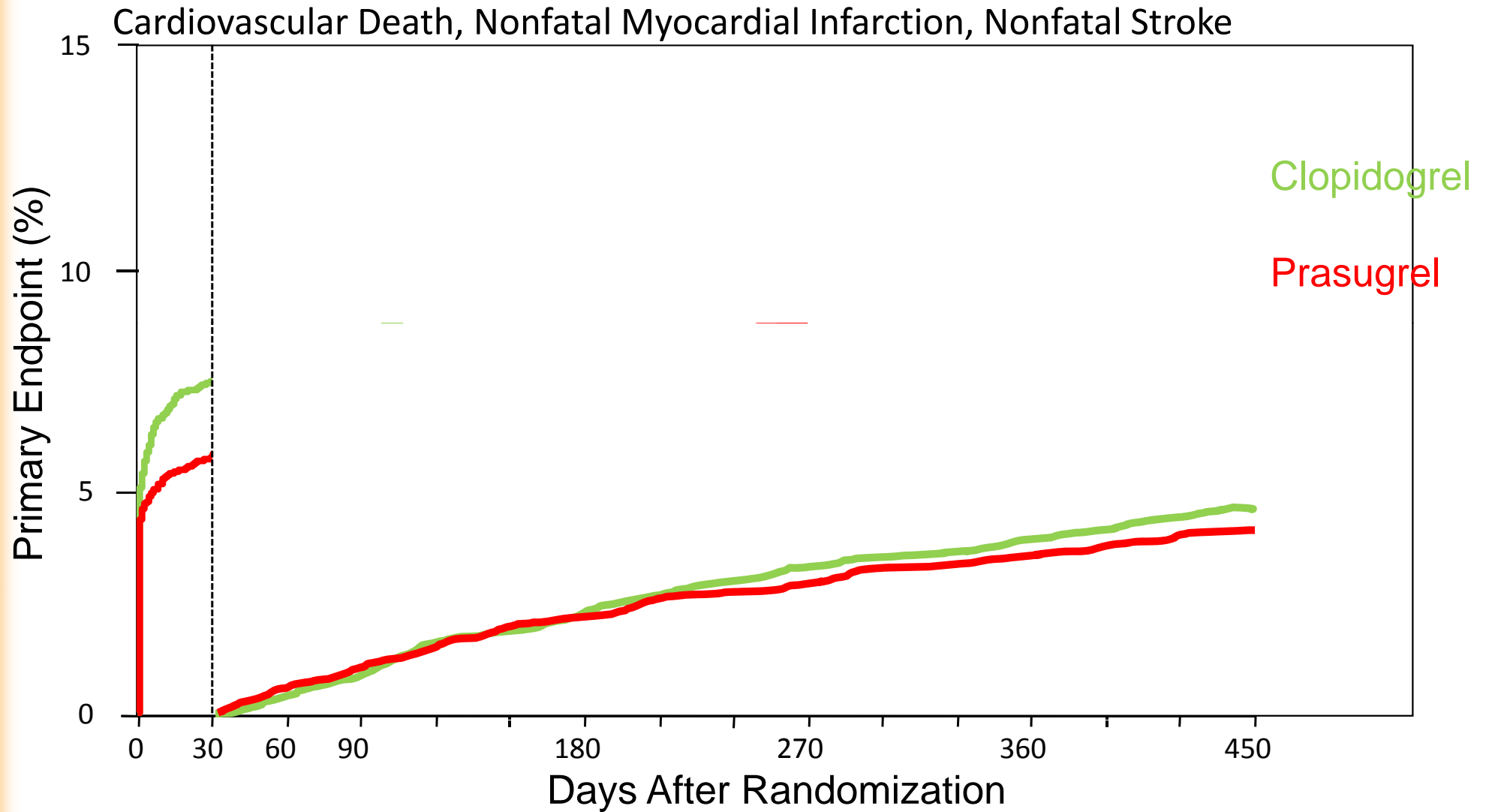


New ADP-receptor antagonists: Few examples of lessons from subgroups

Prasugrel vs. Clopidogrel



New ADP-receptor antagonists: Lessons from benefit over time



All these subgroup/period analyses serve only to generate hypotheses that need to be validated in specifically designed trials...

ISAR-REACT 5

Ticagrelor vs. Prasugrel in 4,000 pts with ACS

STEMI

Unstable AP, NSTEMI

Randomization

Randomization

Ticagrelor

180 mg
loading

Prasugrel

60 mg
loading

Ticagrelor

180 mg
loading

Prasugrel[#]

60 mg
loading

Angiography + PCI

Angiography

Ticagrelor

90 mg 1-0-1

Prasugrel

10 mg 1-0-0*

Prasugrel

60 mg
loading

in pts. with known coronary anatomy

* Prasugrel 5 mg in pts ≥ 75 a or < 60 kg

Duration of ADP blocker therapy: 12 months

Concomitant medication: ASS 75-150 mg/d

PCI

Ticagrelor

90 mg 1-0-1

Prasugrel

10 mg 1-0-0*