

A Case of PCI for Complex Lesions of CABG Anastomosis and Distal LAD ISR Lesions With Paclitaxel-Eluting Balloon Catheter

Jin-Soo Byon, Se-Whan Lee

**Department of Cardiology
Soon Chun Hyang University Cheonan Hospital**

Clinical history (1)

- **A 63-year-old female**
- **Chief complaint :**
 - Chest pain and dyspnea on exertion
 - 7 days ago
- **Past history**
 - Hypertension
 - Diabetes mellitus

Clinical history (2)

- **2007 CAG**
; Diffuse severe 3 Vessel disease
=>> CABG
- **2010/01 CAG c PCI**
; p-mLAD, pLCX stent insertion
- **2010/11 f/u CAG**
; mLAD, pLCX – total occlusion
- **2012 CAG c PCI**
; dRCA, p-mRCA stent insertion

Physical exam

- **BP** :150/90 mmHg
- **HR** : 80 beats per minute
- **Chest auscultation** :
 - Clear breath sound
 - Rale (-)
 - Wheezing (-)

Lab finding

- **AST/ALT** 33/28(U/L)
- **BUN/Cr** 33.9/1.3 (mg/dl)
- **Na/K/Cl** 134/4.9/99 (mEq/L)
- **Glucose** 315 (mg/dl)
- **CK-MB** 25(U/L)
- **Troponin T** 0.013 ng/mL
- **NT-ProBNP** 113.4pg/mL
- **HbA1C** 6.1%
- **LDL Cholesterol** 77 (mg/dL)

ECG

09

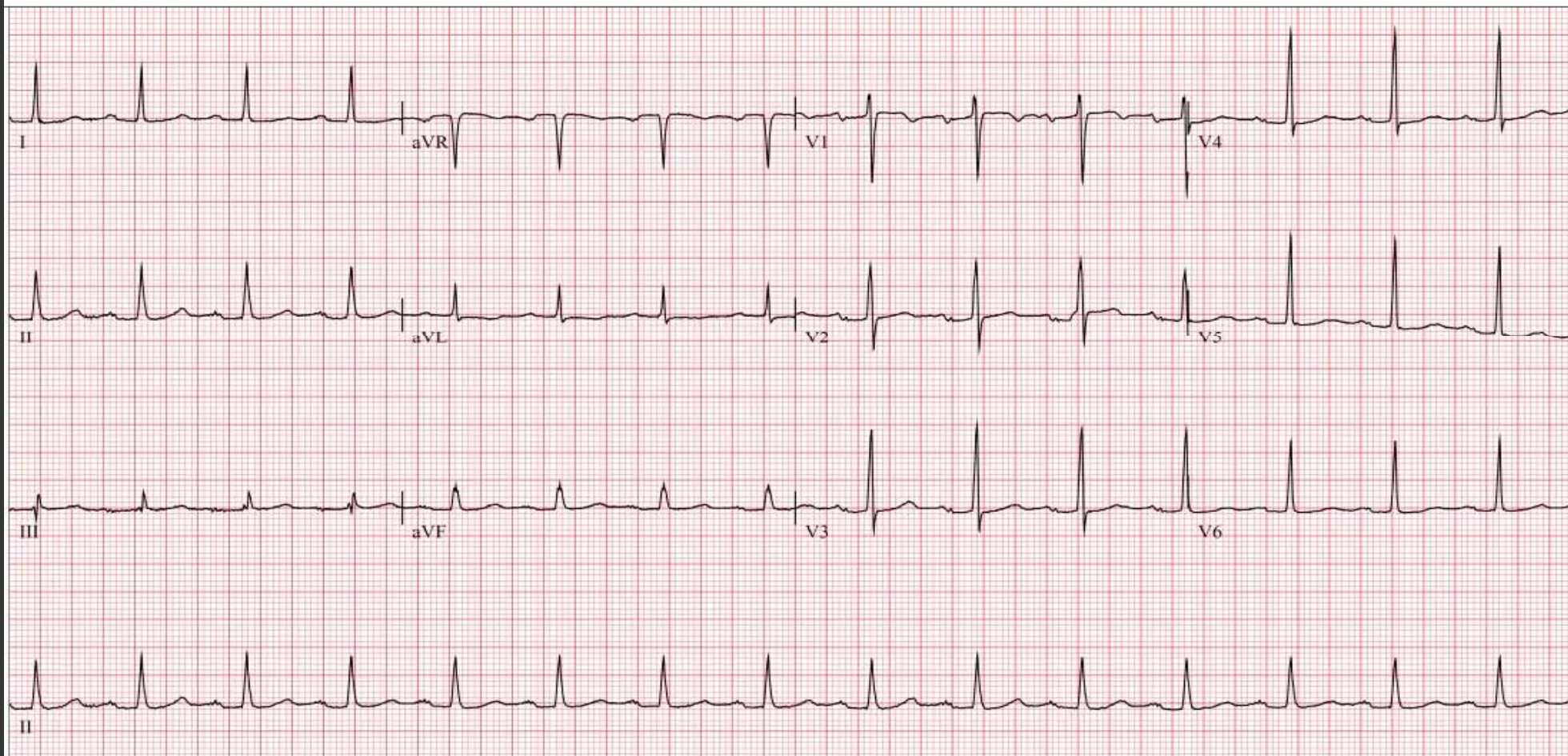
63Years

Female

Vent. Rate 90 bpm
PR interval 226 ms
QRS duration 74 ms
QT/QTc 378/462 ms
P-R-T axes 22/35/74 °
P duration 57 ms

Acc Number:1104159531

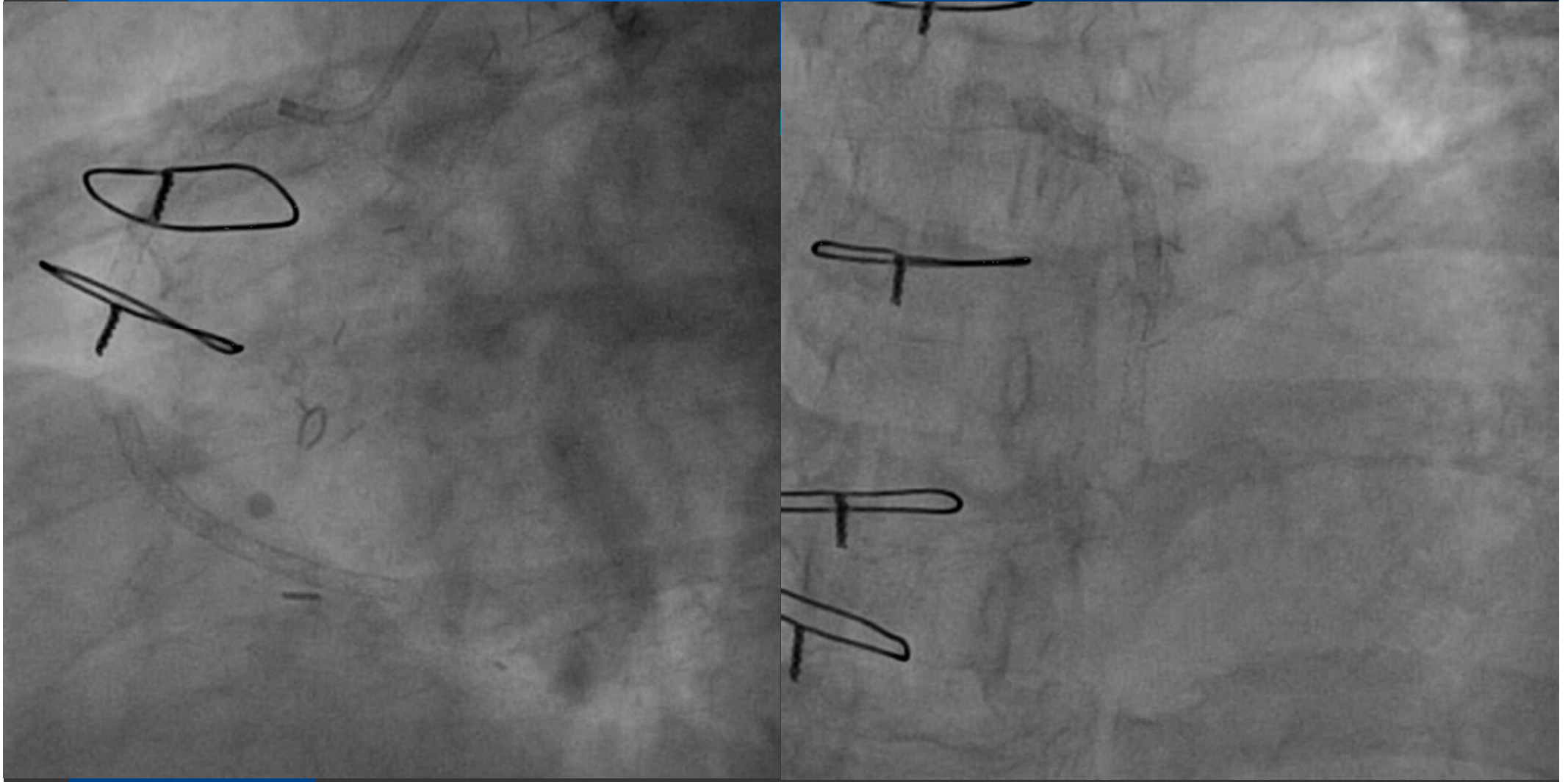
Interpretation
Sinus rhythm with 1st degree AV block
Otherwise normal ECG



Echocardiogram

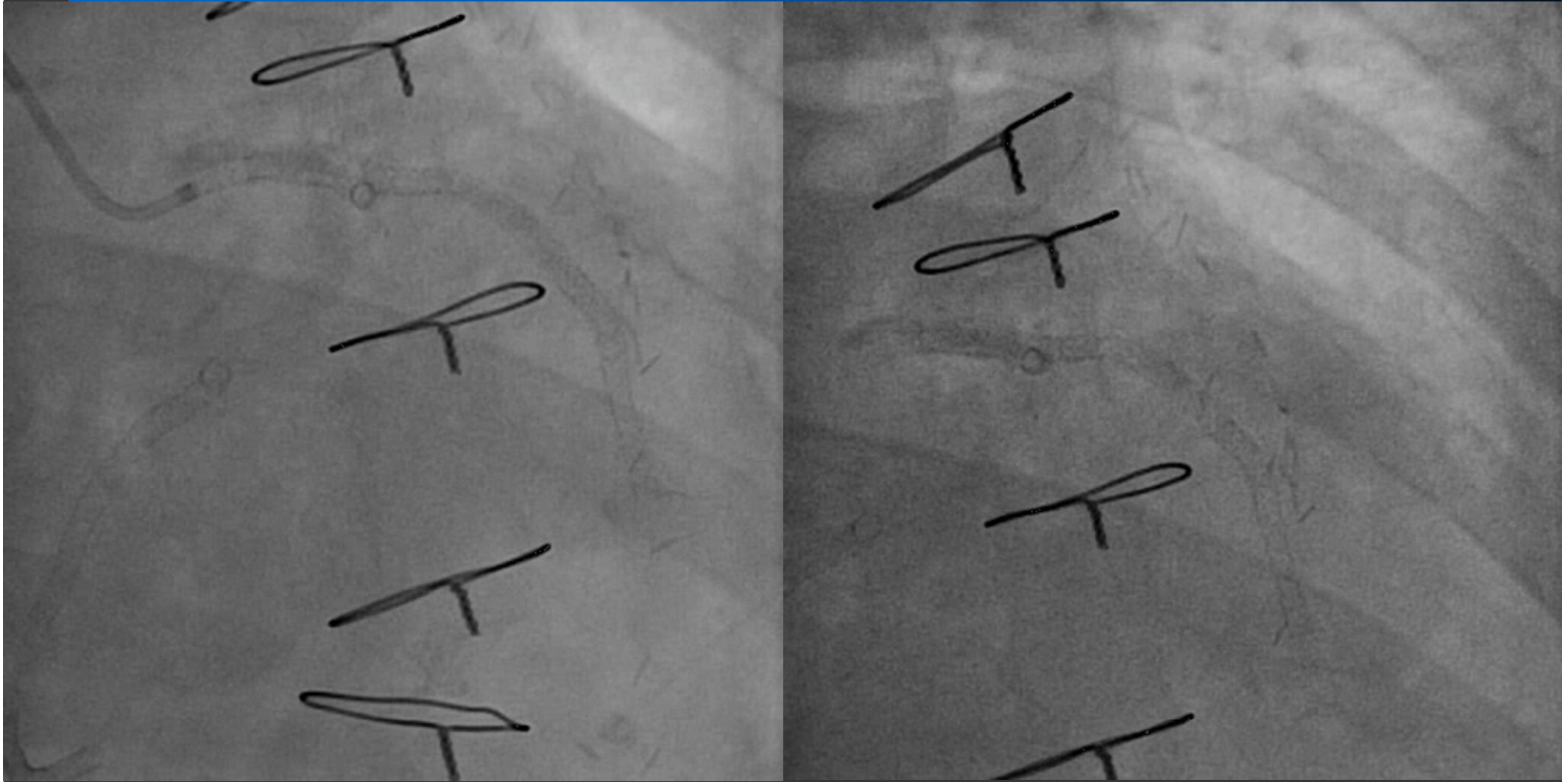


Coronary angiography



pRCA & dRCA stent - Patent c mild NIH
SVG to dRCA & dLCX - Patent c good bypass flow

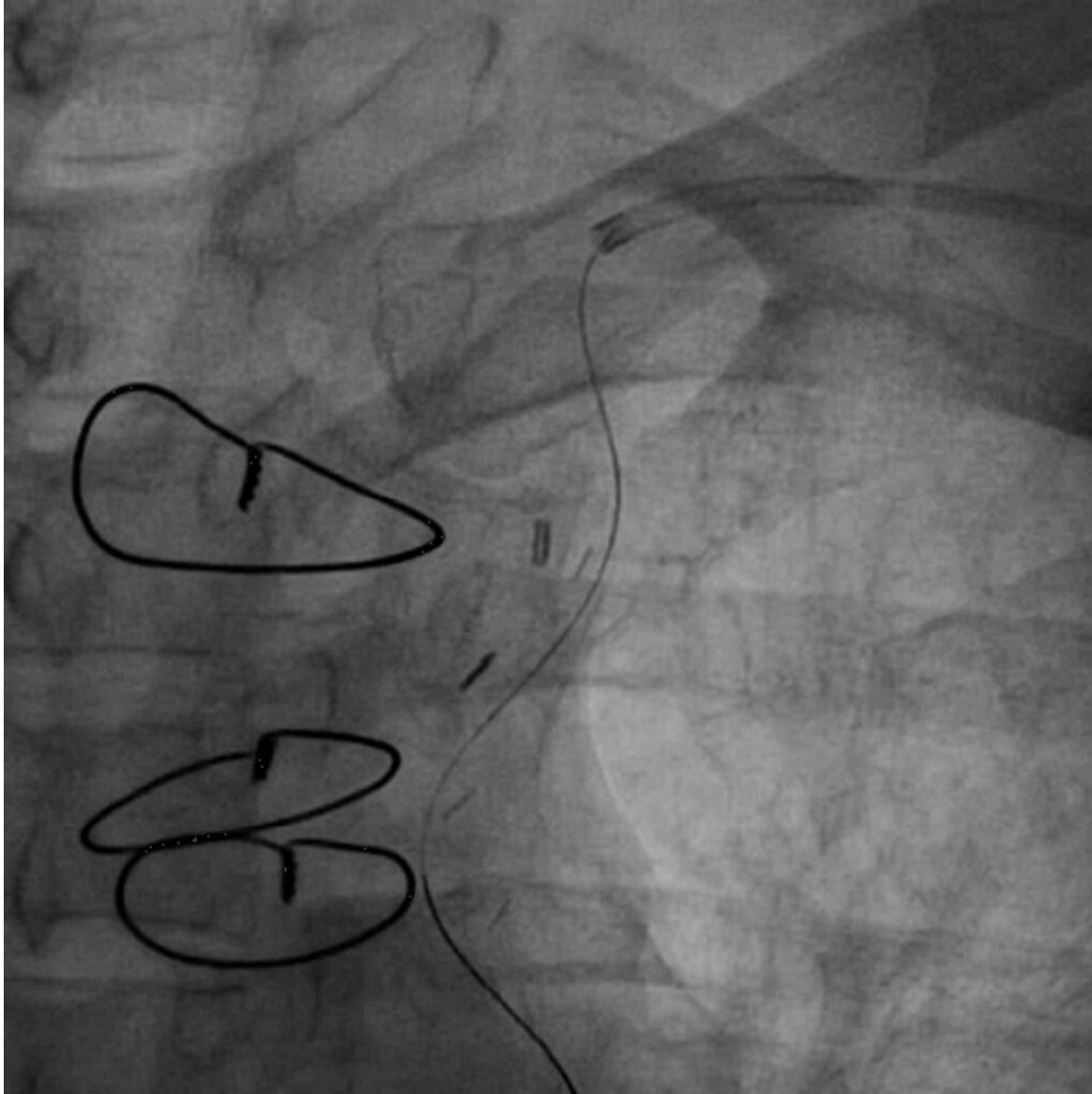
Coronary angiography



LAD ; Stent mid to distal total ISR, Stent distal edge 70~80% ISR

LCX ; Stent ostium total ISR

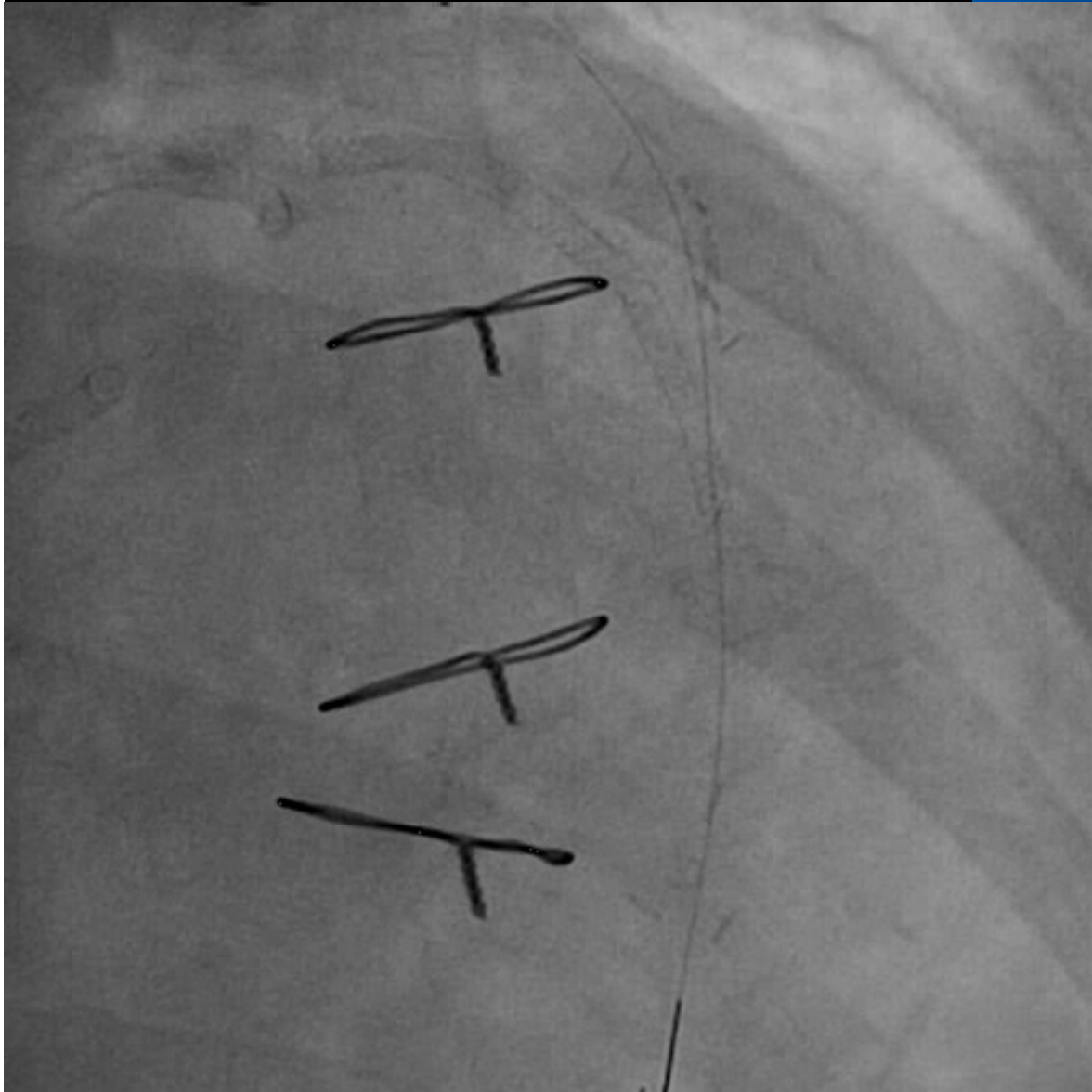
Procedure step



Approach
: Left radial artery

G/C : 6Fr JR 3.5

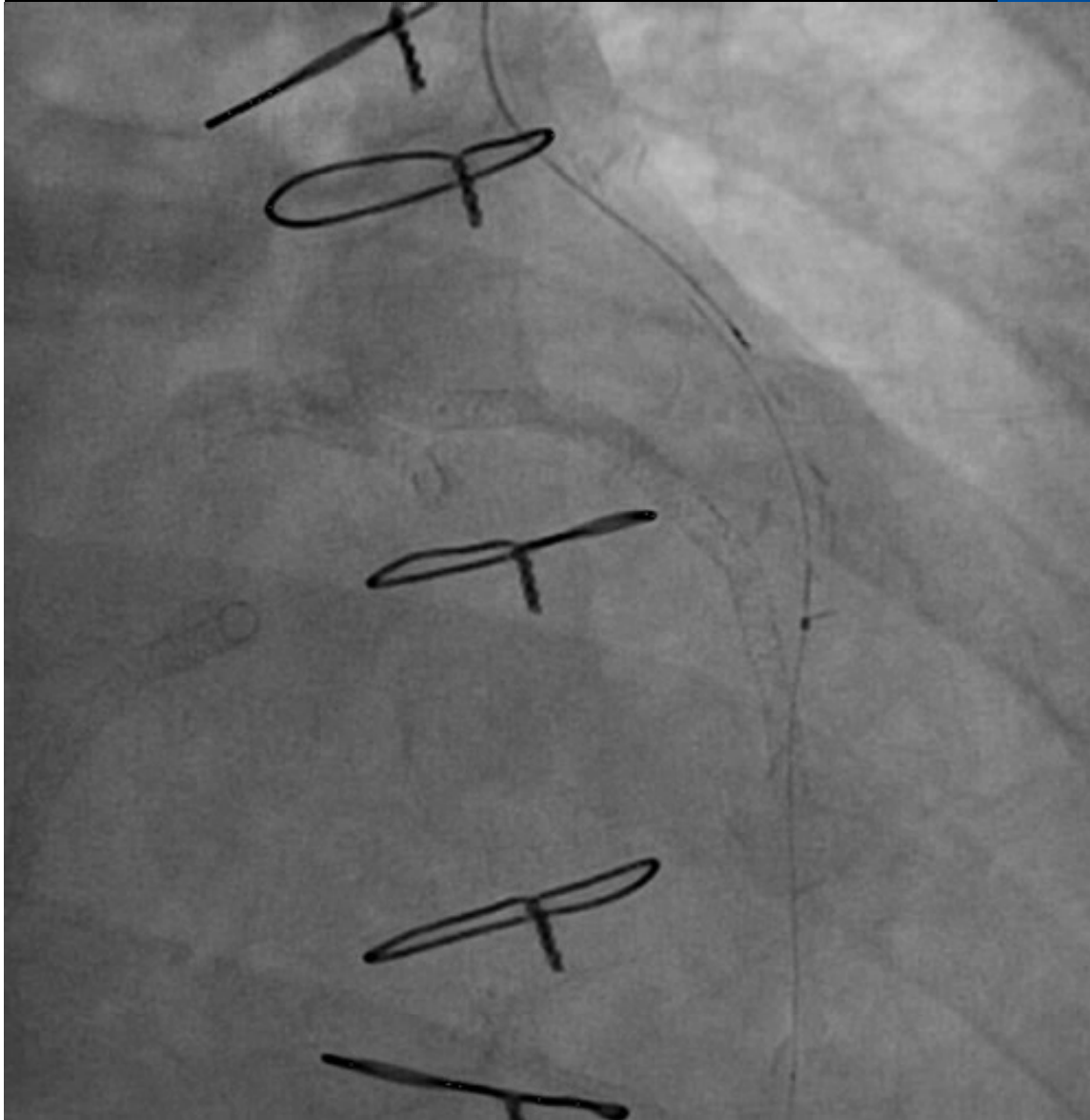
Procedure step



G/W

: 0.014-inch Fi-elder FC

Procedure step



**IVUS did not passed to
anastomosis site**

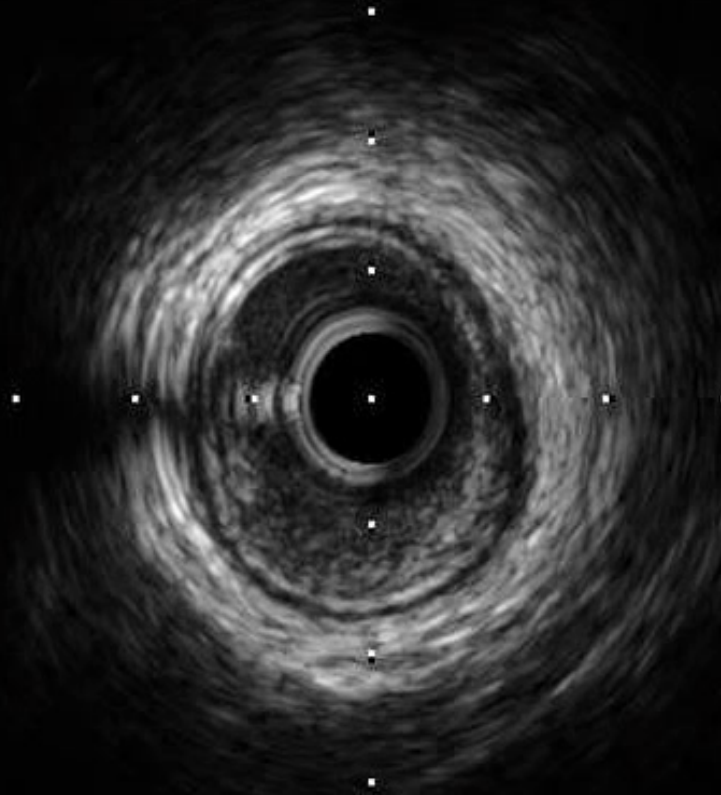
Procedure step



POBA with a 2.0 × 15 mm Maverick balloon at 8 atm for 50 sec

IVUS passed to anastomosis site

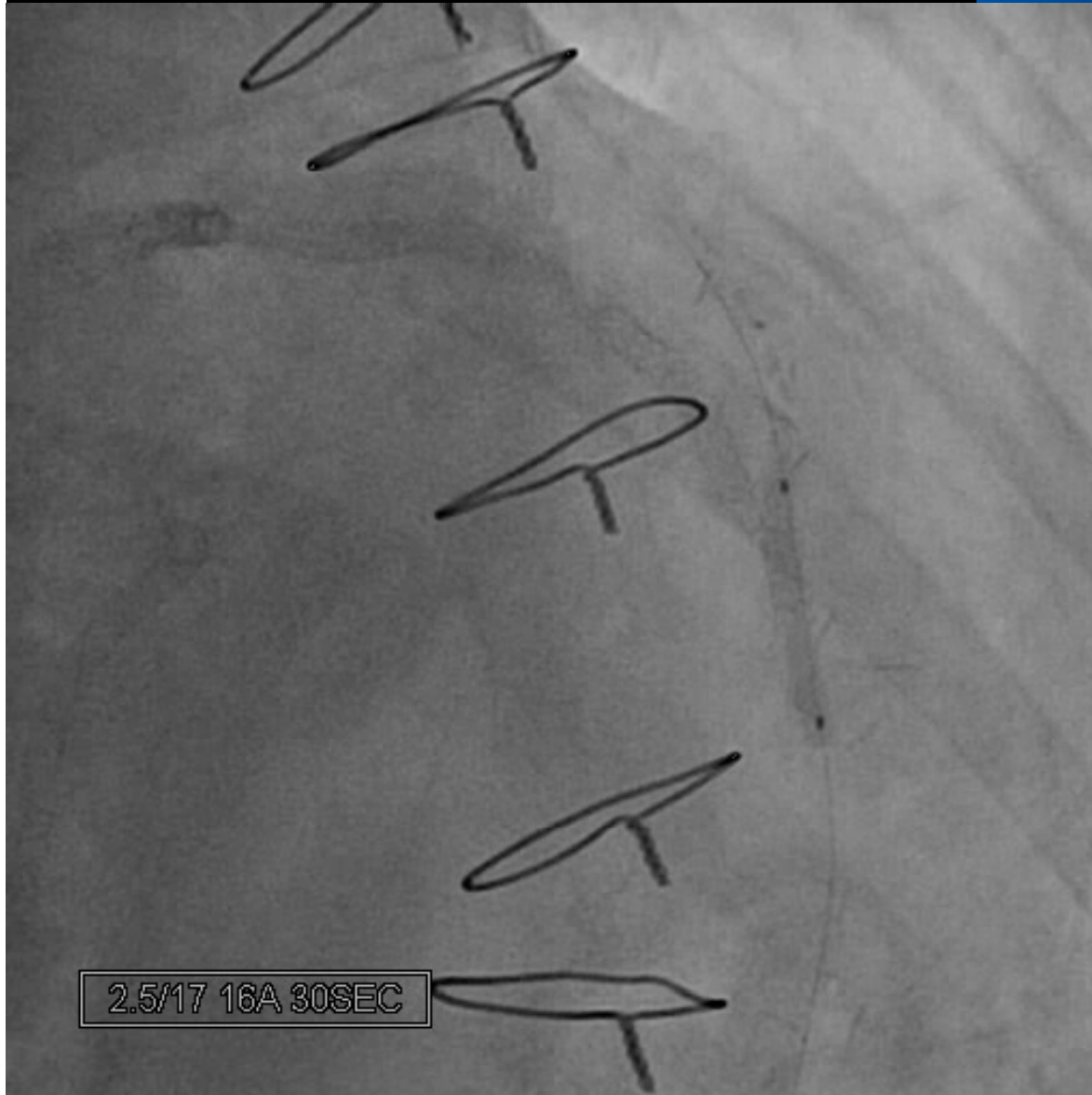
IVUS



LIMA anastomosis site : 60% stenosis

Distal LAD stent edge : 75% ISR

Procedure step

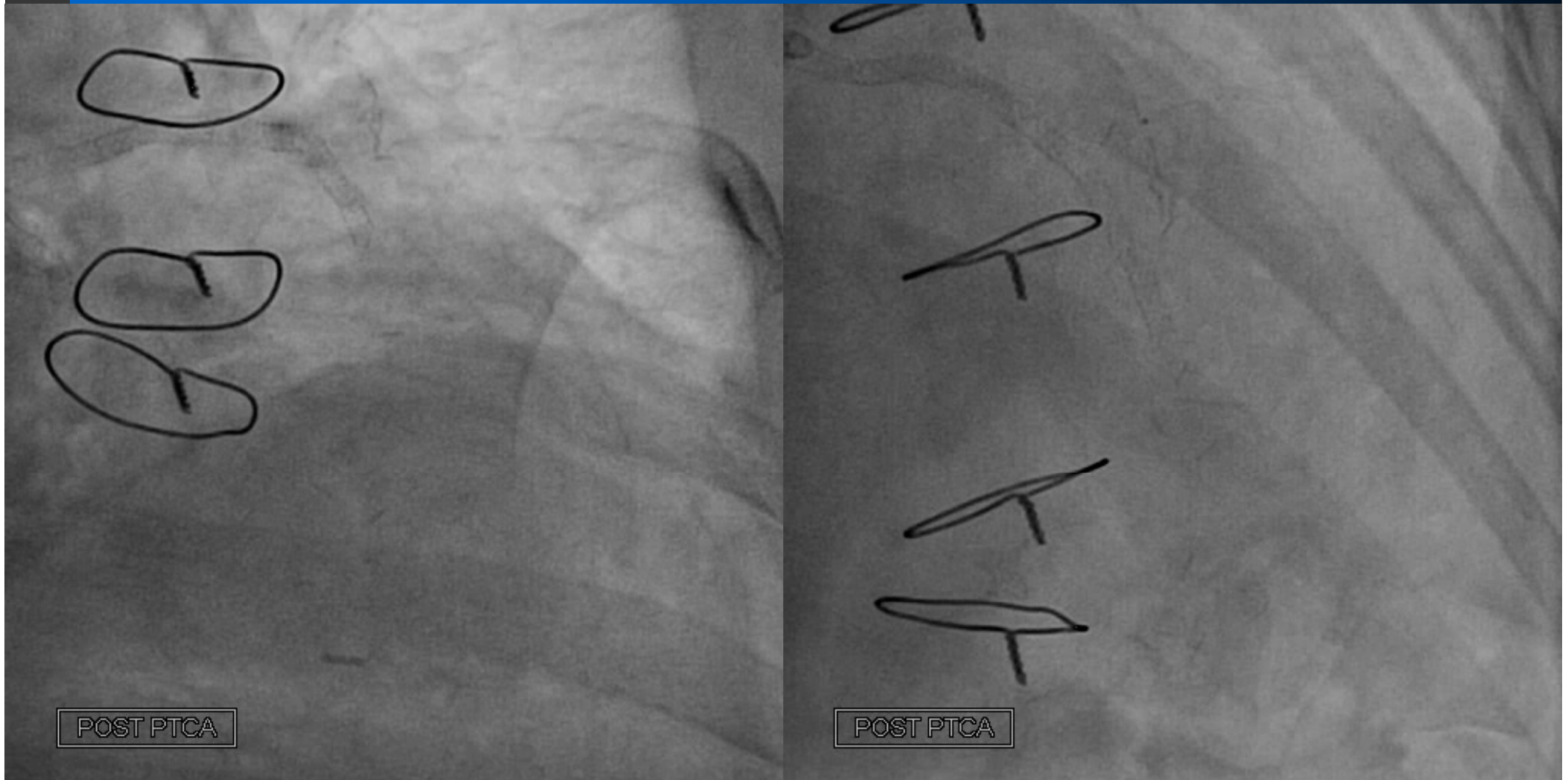


**2.5 × 17 mm SeQuent
Please paclitaxel-eluting
balloon catheter**

At 7 atm for 60 sec

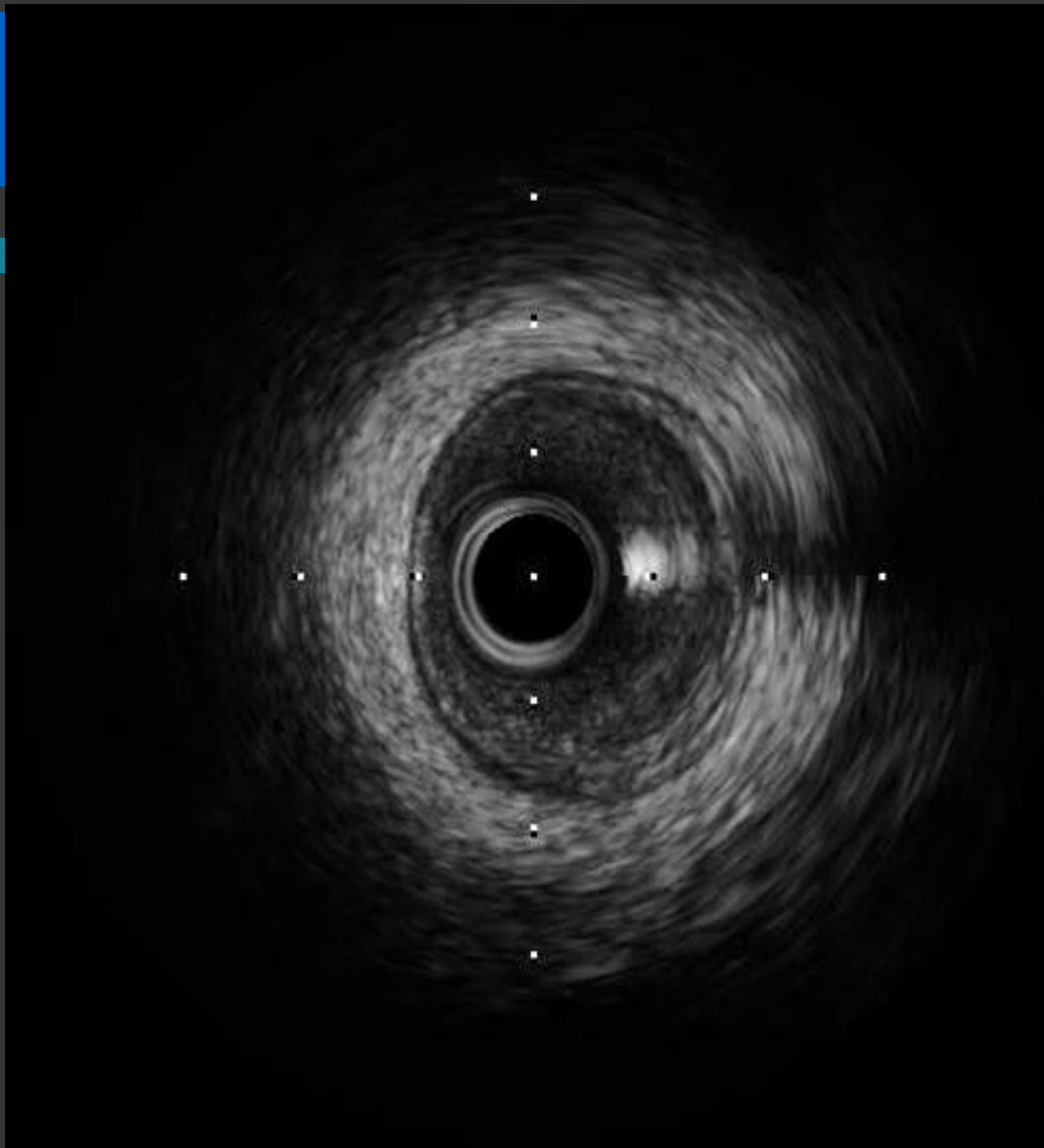
At 17 atm for 40 sec

Final Coronary angiography



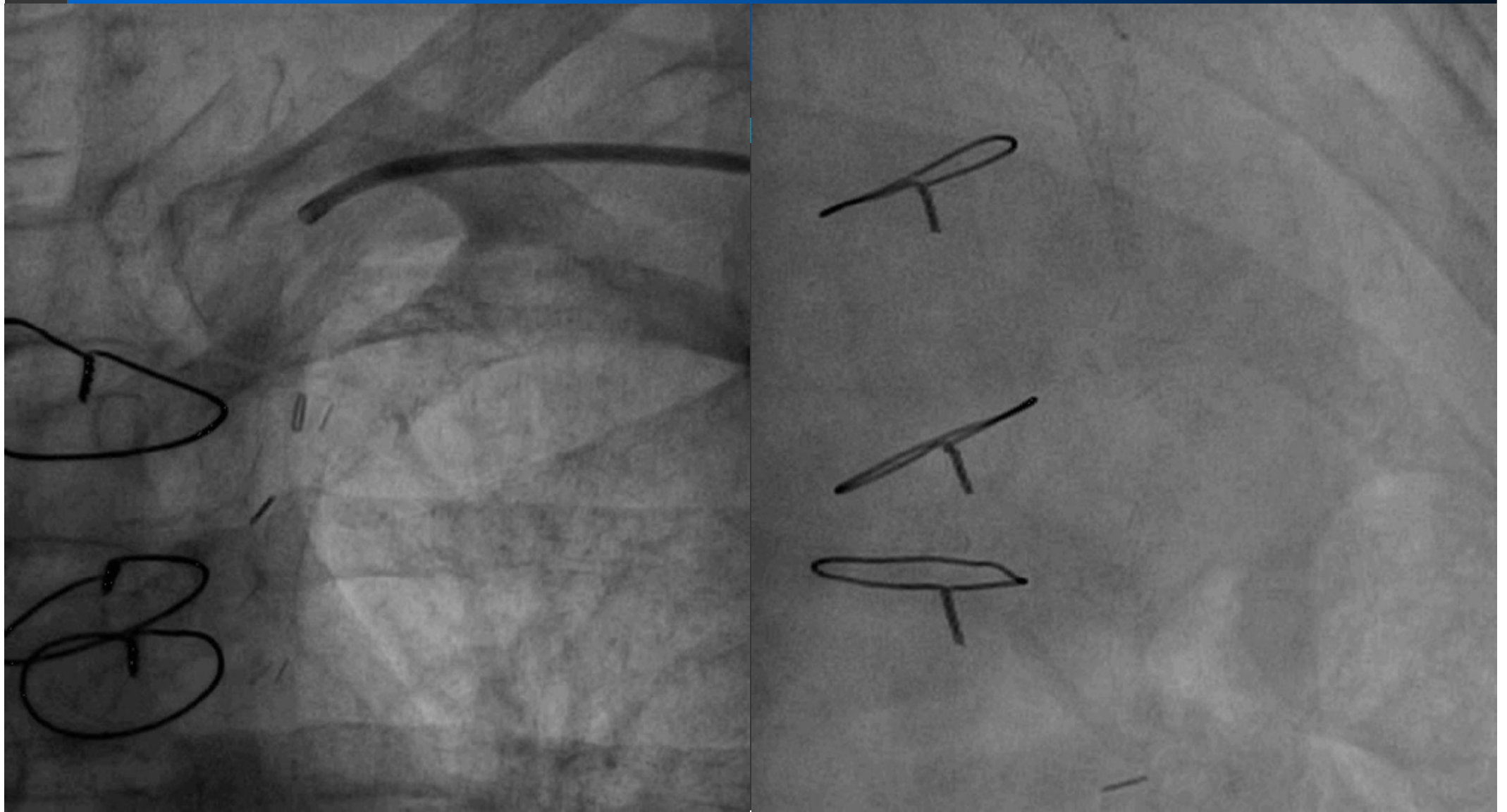
RS 20% to 30%
TIMI 3 distal flow

Final IVUS



RS 20% to 30%
TIMI 3 distal flow

F/U CAG after 5months



LAD : Stent distal edge 60~70% ISR