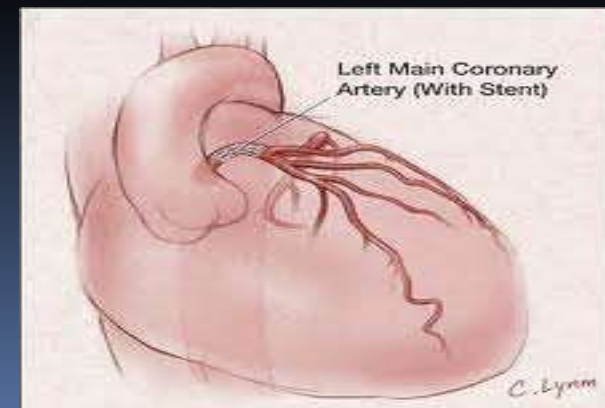


Left Main Bifurcation TCTAP 2015

DR HAMAT HAMDANI CHE HASSAN,
AP DR OTEH MASKON,
DR CHOR CHEE KEN,
UKM MEDICAL CENTRE
KUALA LUMPUR



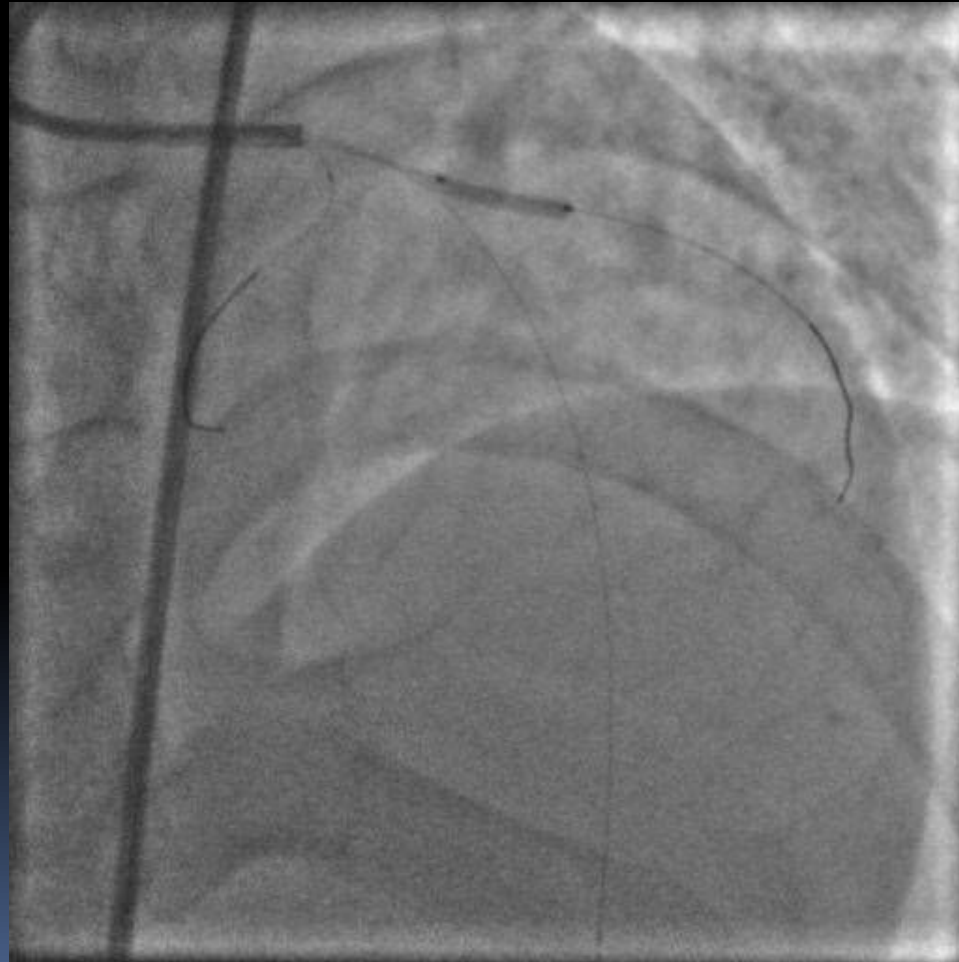
CORONARY ANGIOGRAM

- Imp : severe 2vd (os- prox LAD & osLCX) with distal LMS involvement- LMS bifurcation Medina 1,1,1- Syntax score 23
 - CABG?
 - PCI
 - Hybrid/semi-hybrid?
 - If PCI - ?strategy ?which stent/s

LAD CSA 3.0mm², LMS CSA 5.1mm²

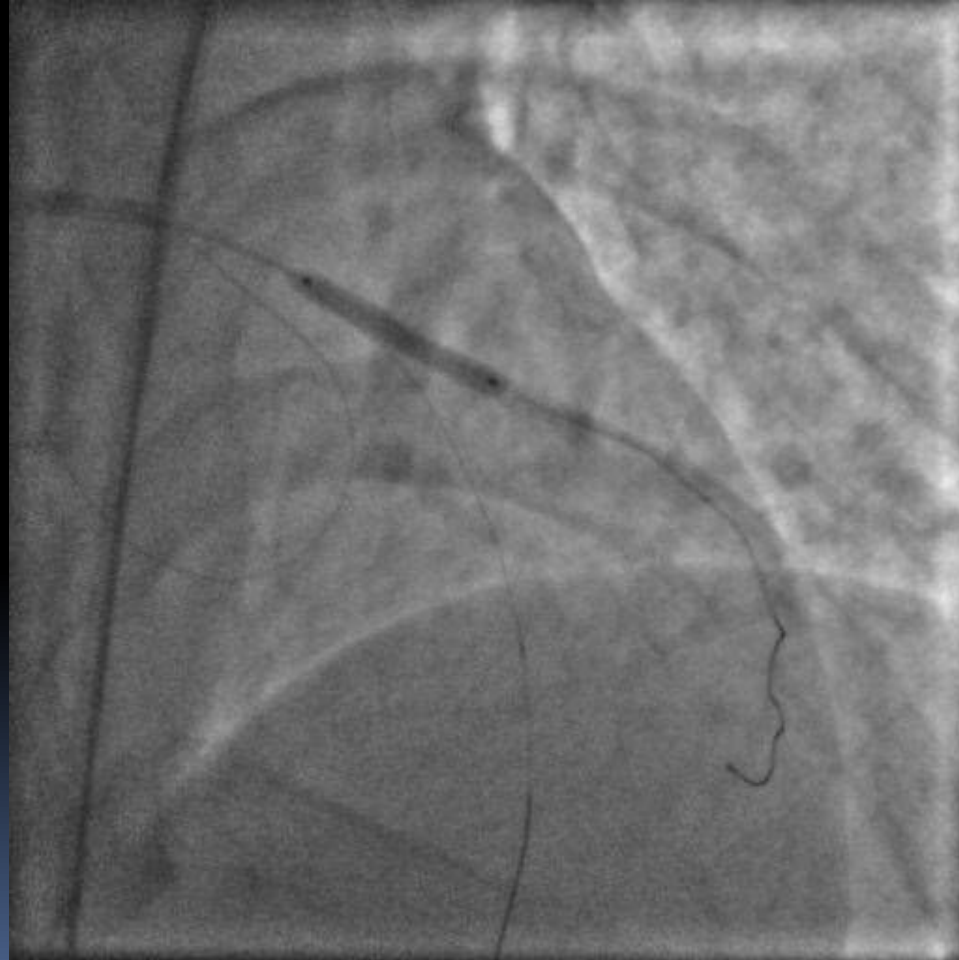


Sapphire II 2.0X15mm and Tazuna 3.0X15mm



BMW wire to
LCX,
Choice PT
wire to LAD,
BMW to
anchor

DEB Sequent Please 3.0X20mm

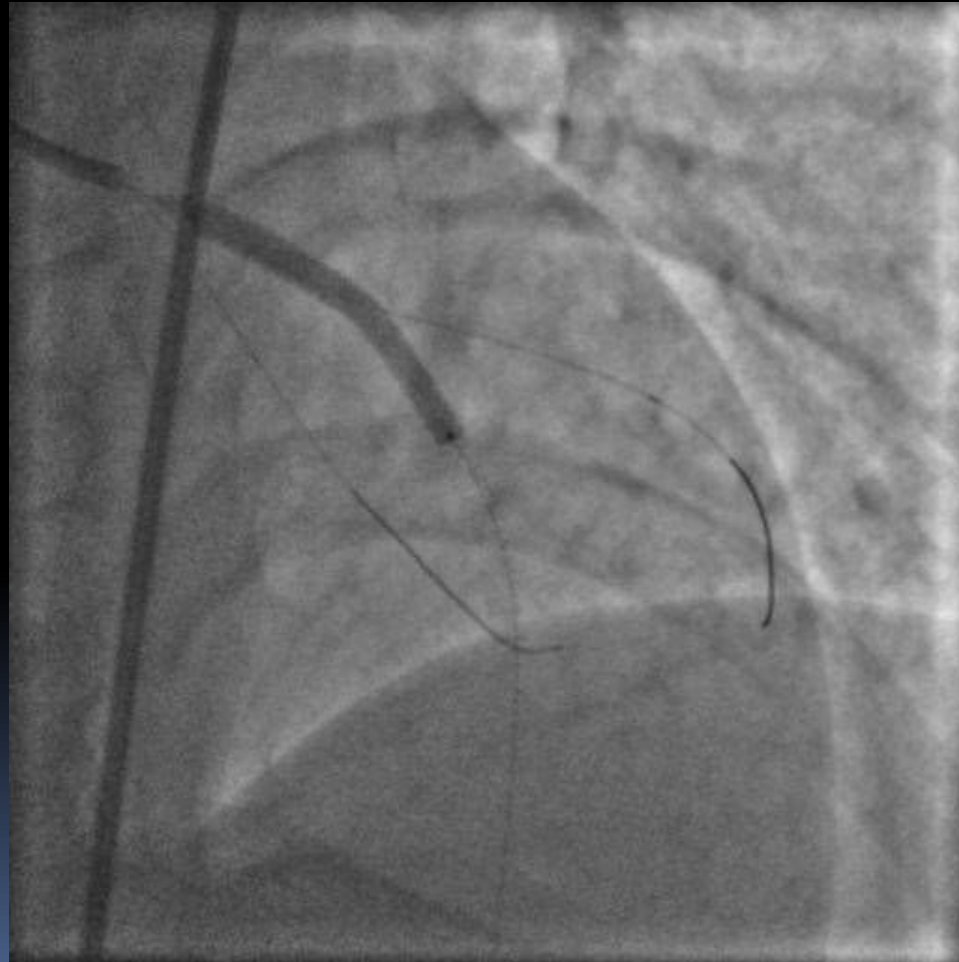




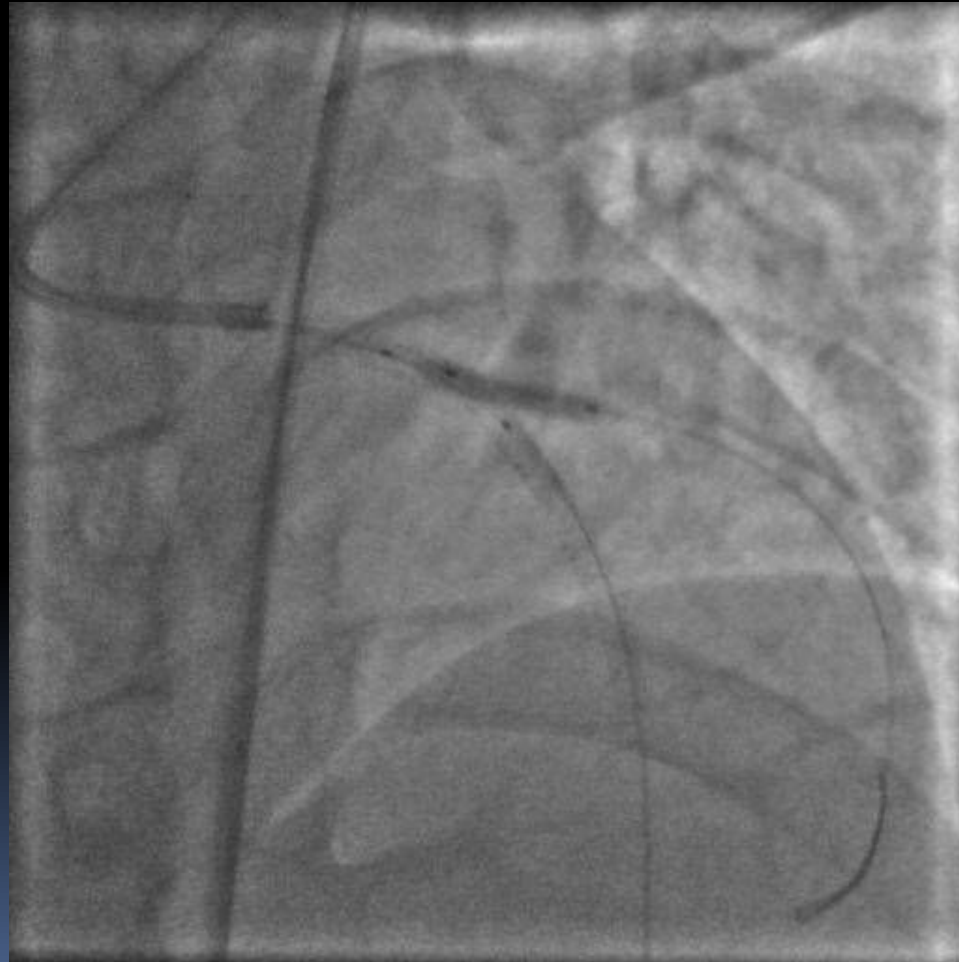
Xience V 30x28mm 14atm



Promus Element 3.5x32mm 14atm



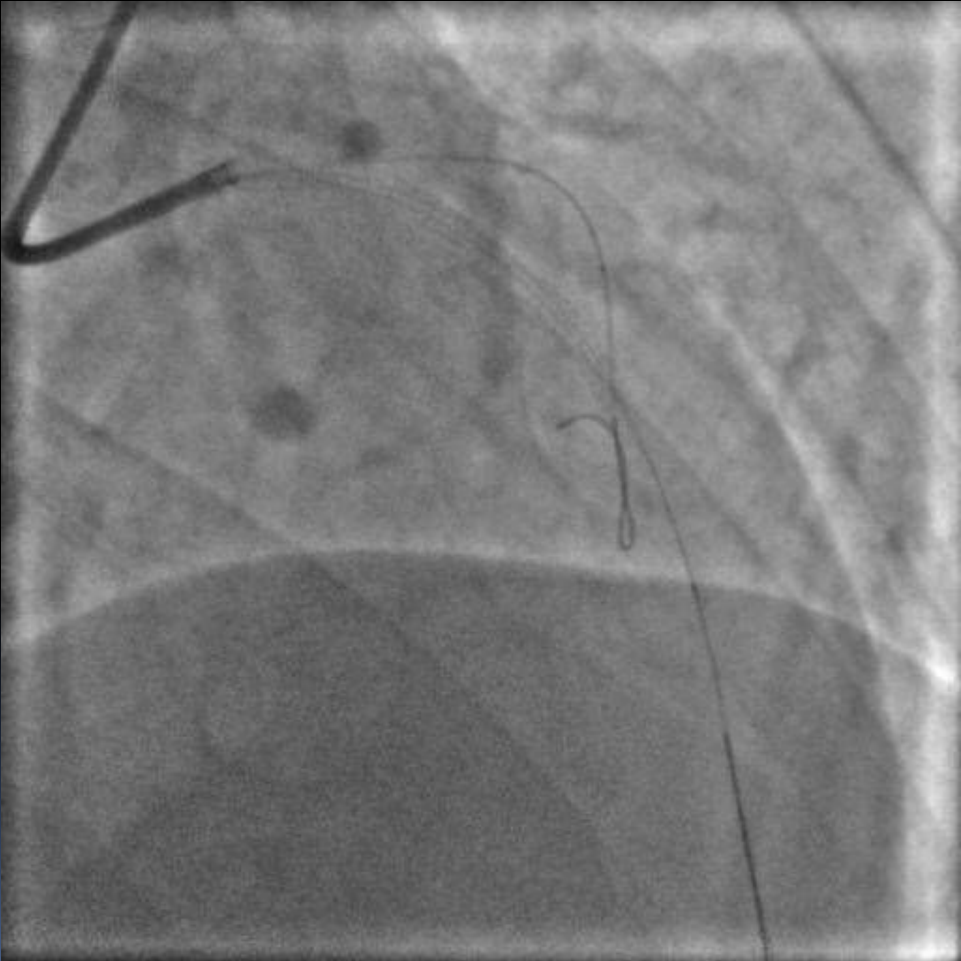
Recross the LCX and post dilate w
Tazuna 3.0X15mm



Post dilate LAD to LMS w Sapphire
NC 3.5X15mm- 18atm









LAD CSA 7.3mm², LMS CSA 9.2mm²



Optimal Medical Therapy

- Prasugrel 10mg OD,
- Aspirin 100mg OD,
- Atorvastatin 80mg Nocte,
- Metoprolol 25mg BD,

- Repeat EST in one month- Normal
- Family screening



Thank you

- Questions or comments
- 