

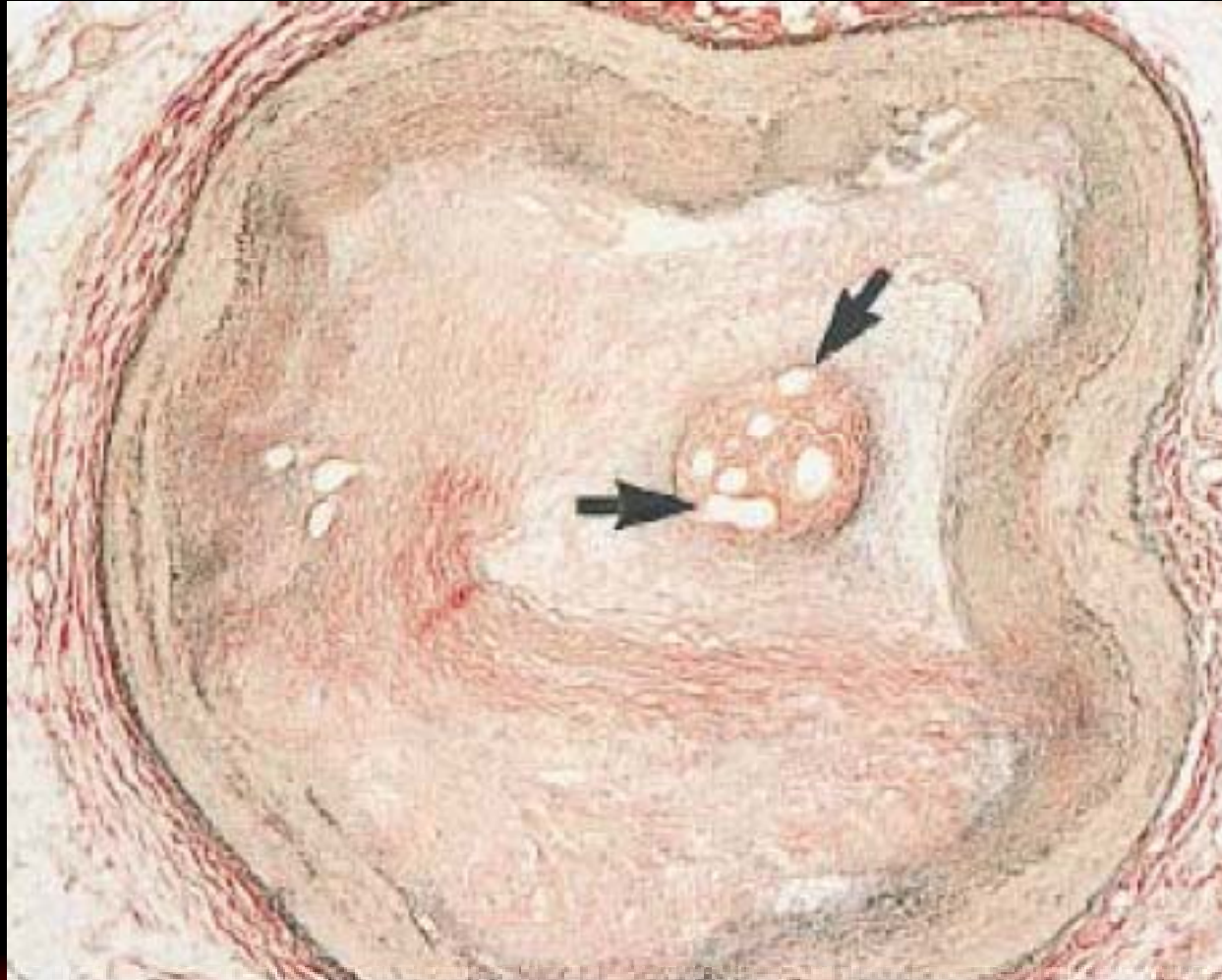
Current Status of an Antegrade Approach in CTO PCI

Toyohashi Heart Center
Yasushi Asakura M.D.



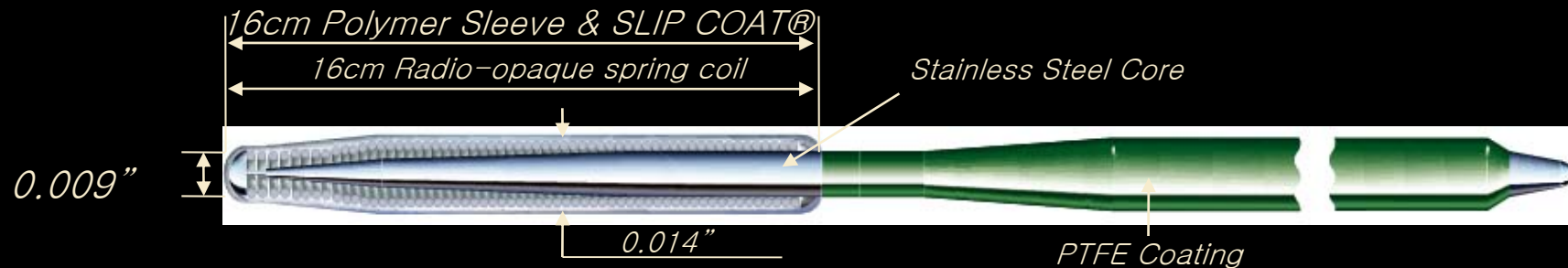


Microchannels in CTO





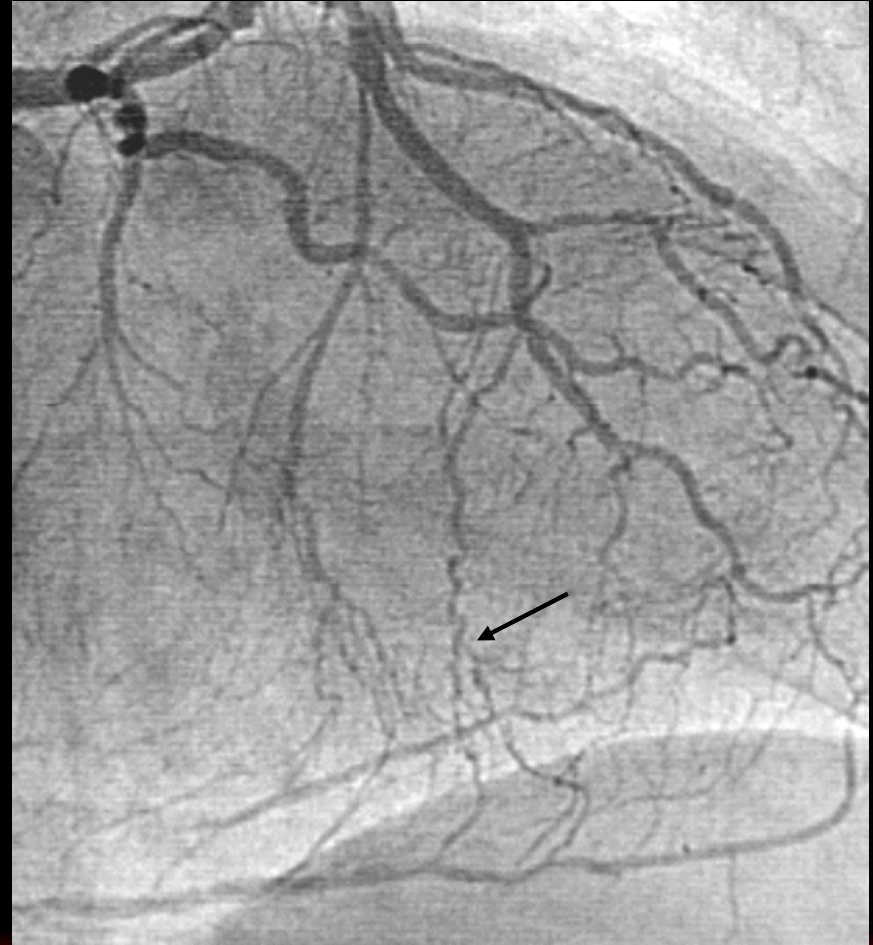
Structure of Fielder-XT



0.009 Tapered Tip
Hydrophilic Coating & Polymer Sleeve
Tip Load: 0.8g

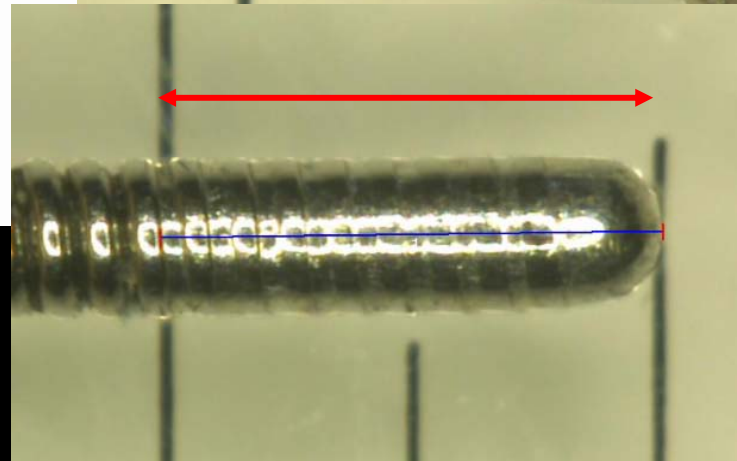
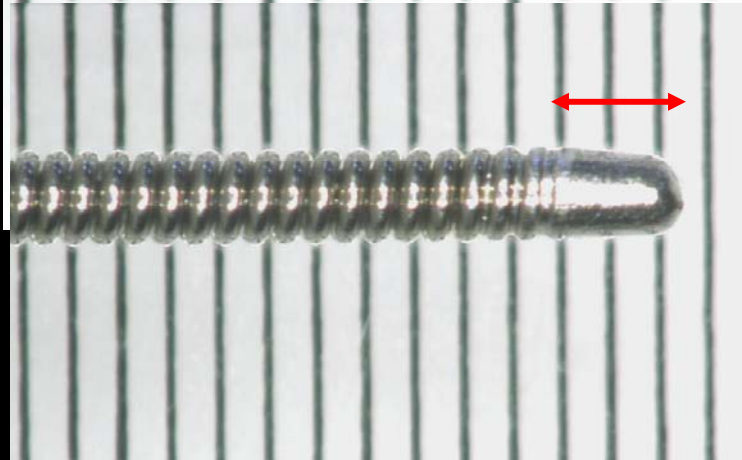
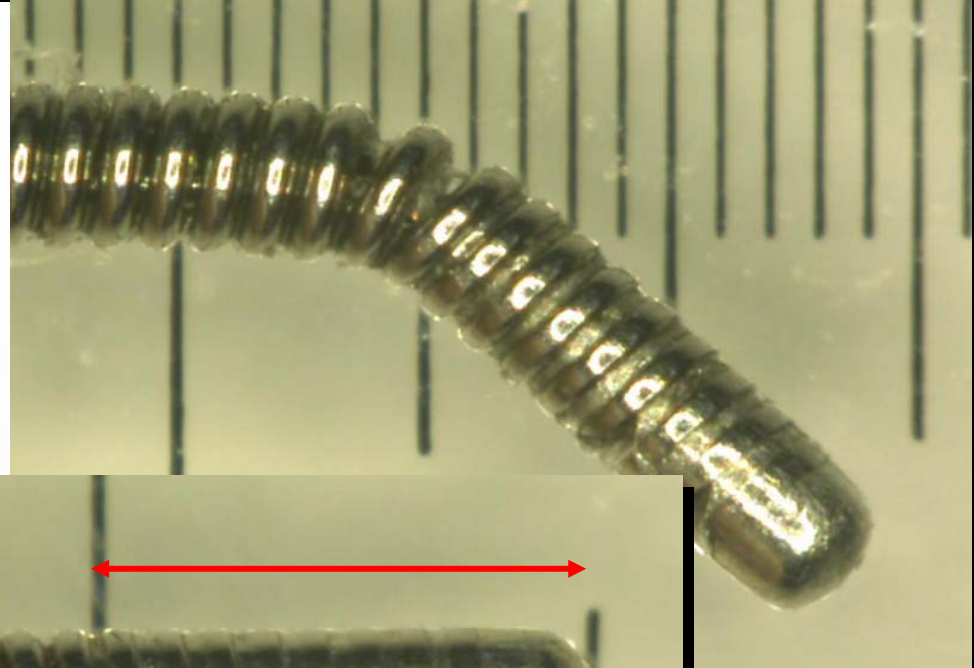
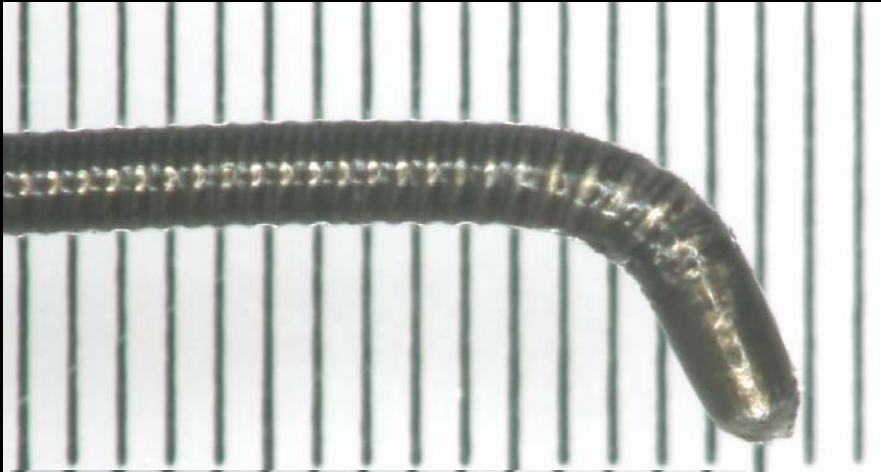


Septal Channels





Soldering Length at Wire Tip



Fielder-XT

0.014" wire

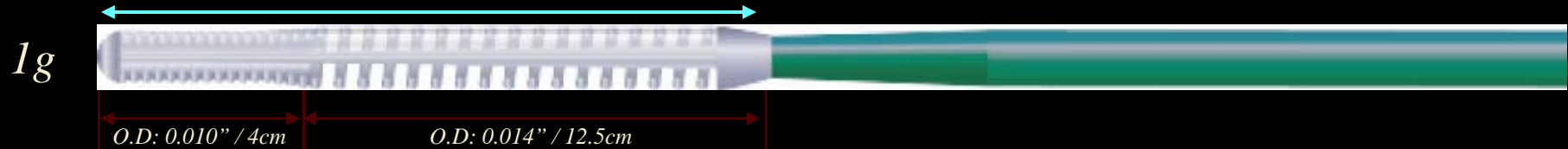


PTCA GUIDE WIRE
A T H L E T E

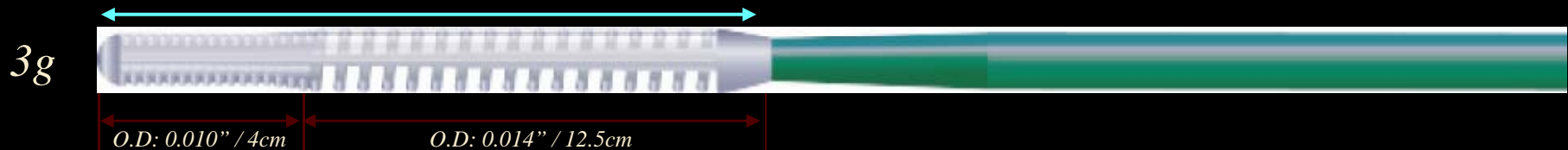


Sleek-Coat Technology with Hydrophilic Coating
Stainless One Piece Core Shaft
0.010" - 0.014" Taper Design

Wizart 1



Wizart 3

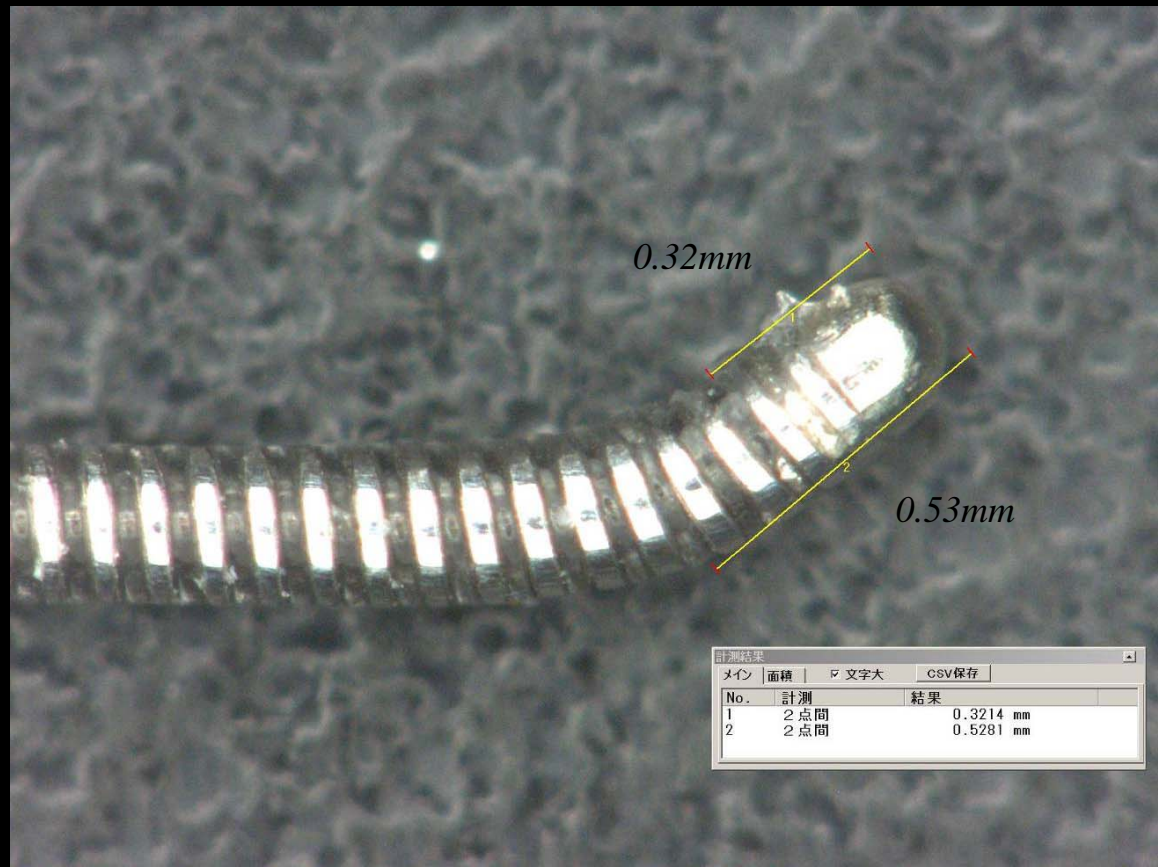


Model	Tip Stiffness	Radiopaque	Coating	全長
WIZARD 1	1g	16.5cm	17cm Hydrophilic	178cm
WIZARD 3	3g	16.5cm	17cm Hydrophilic	178cm



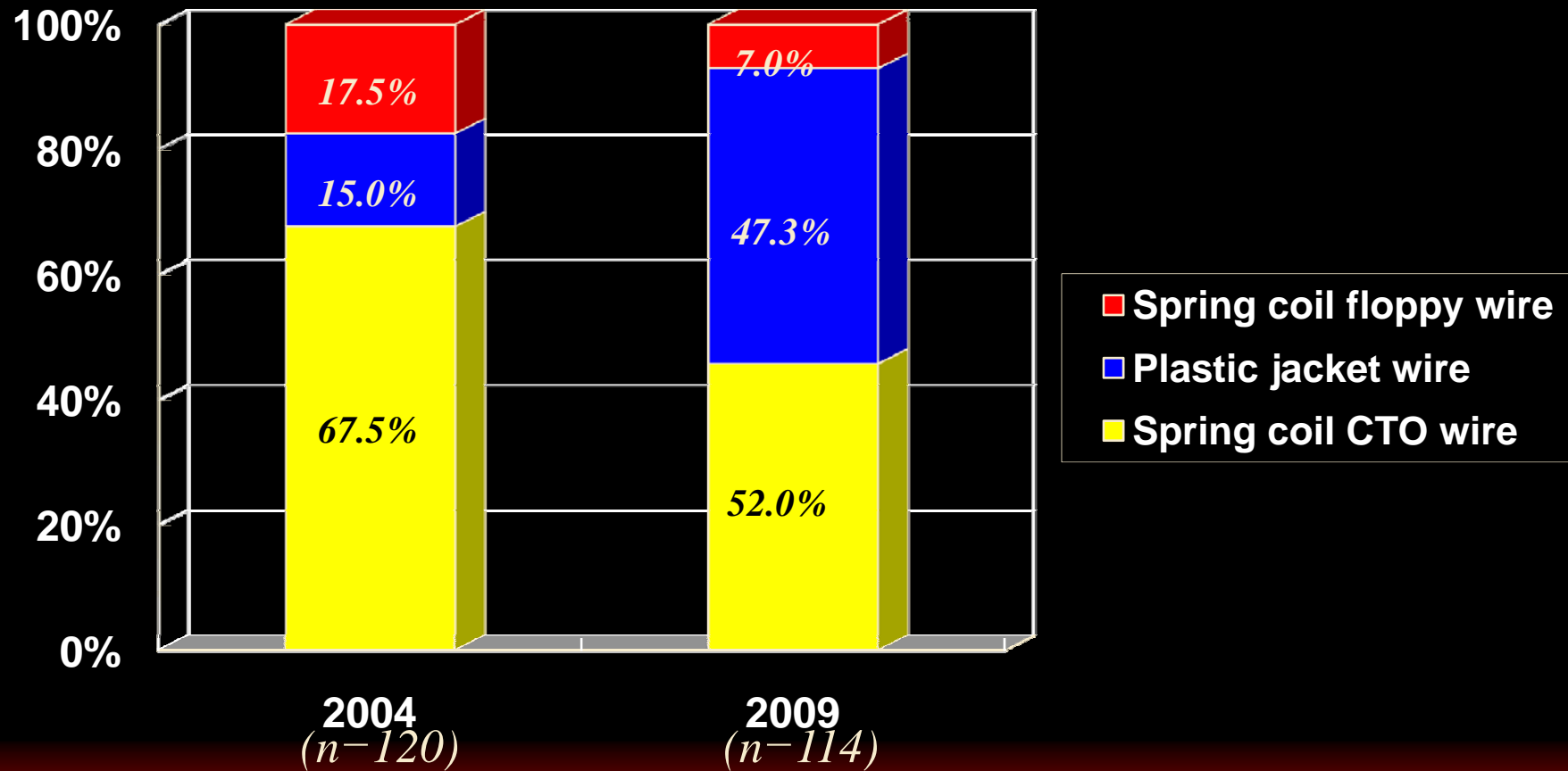
Wizard Guide Wire Structure

Distal Tip Micro Shaping Image



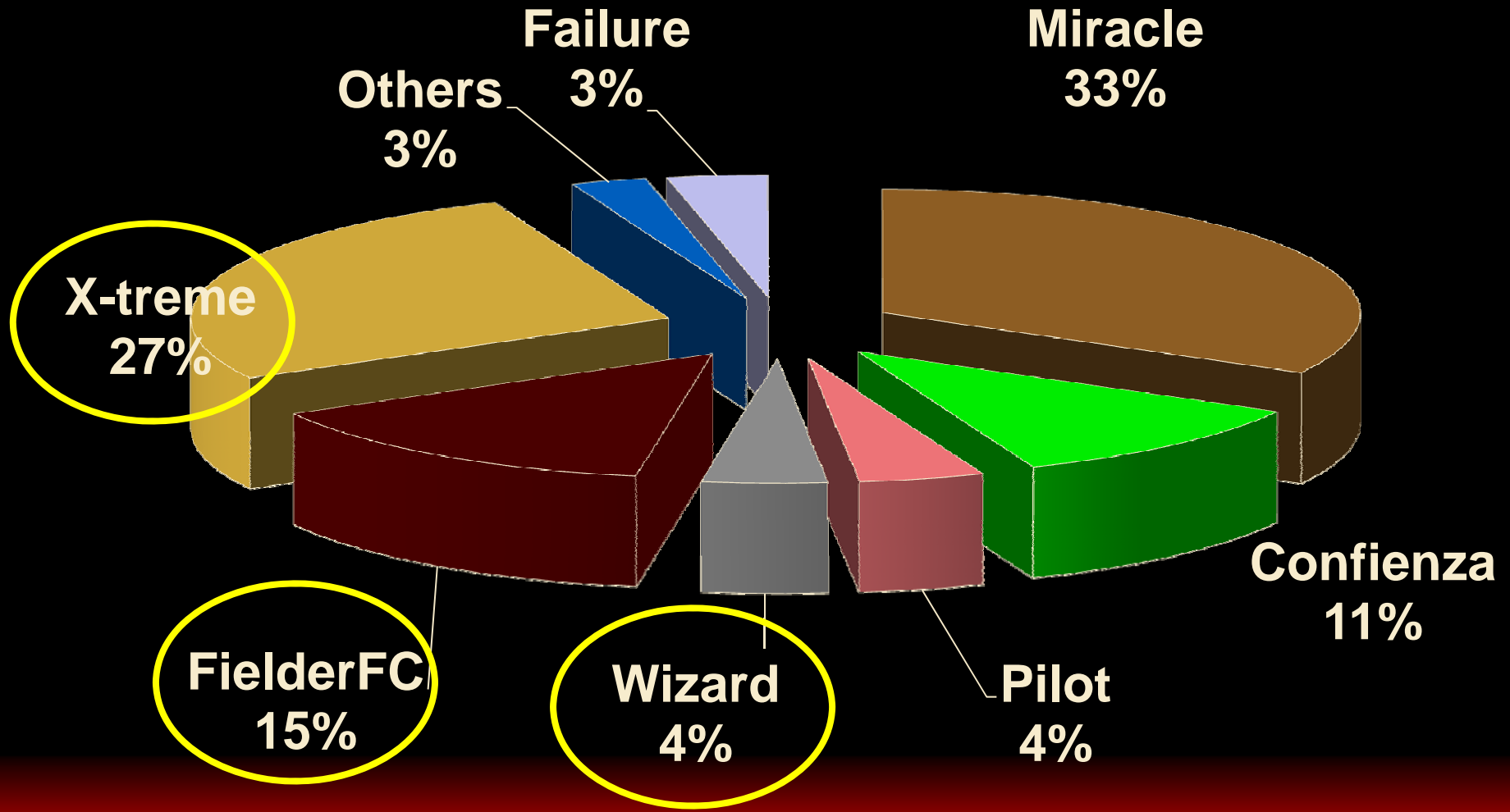


Crossing Guide Wire in THC



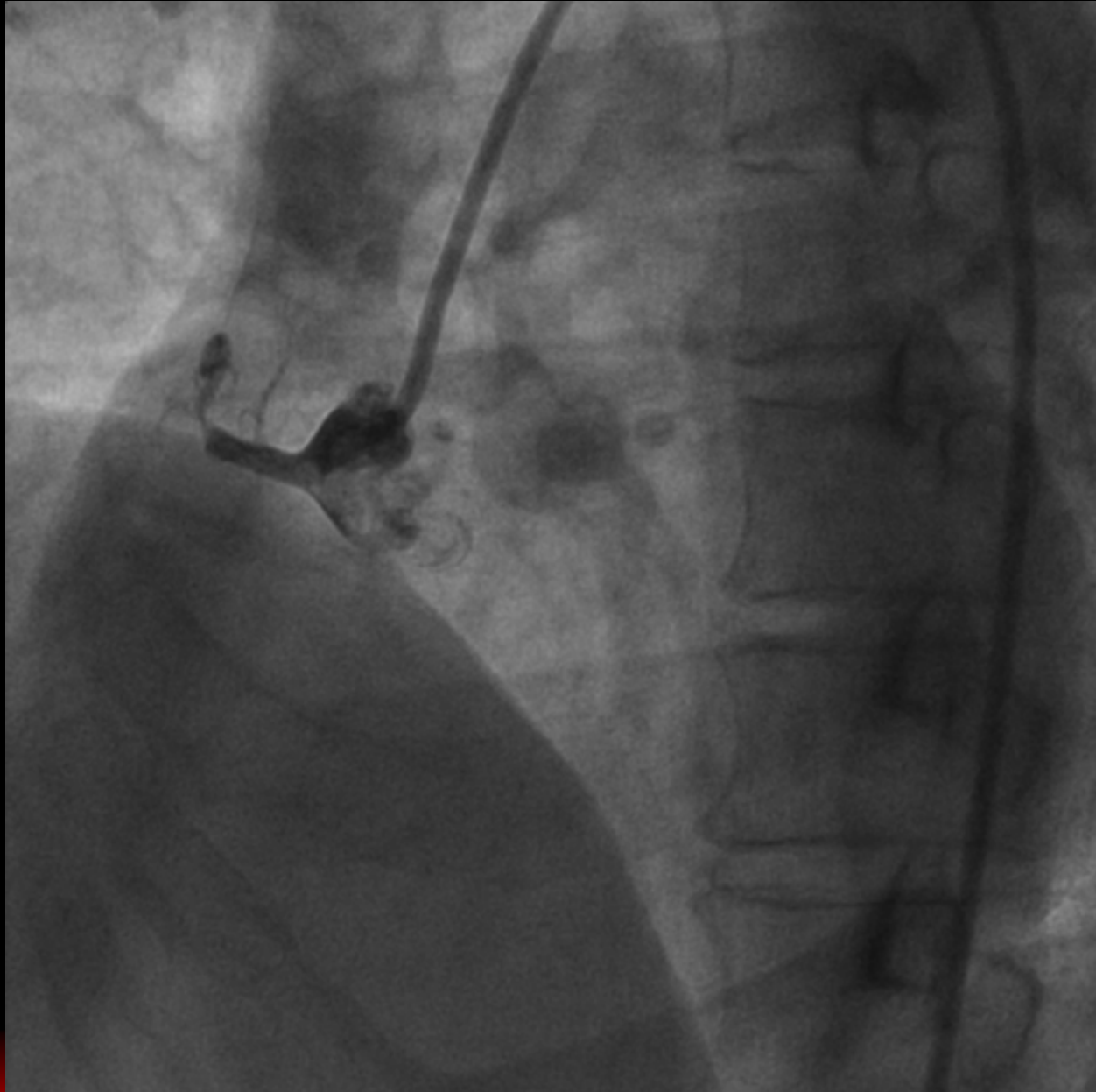


Crossing Guide Wire in THC



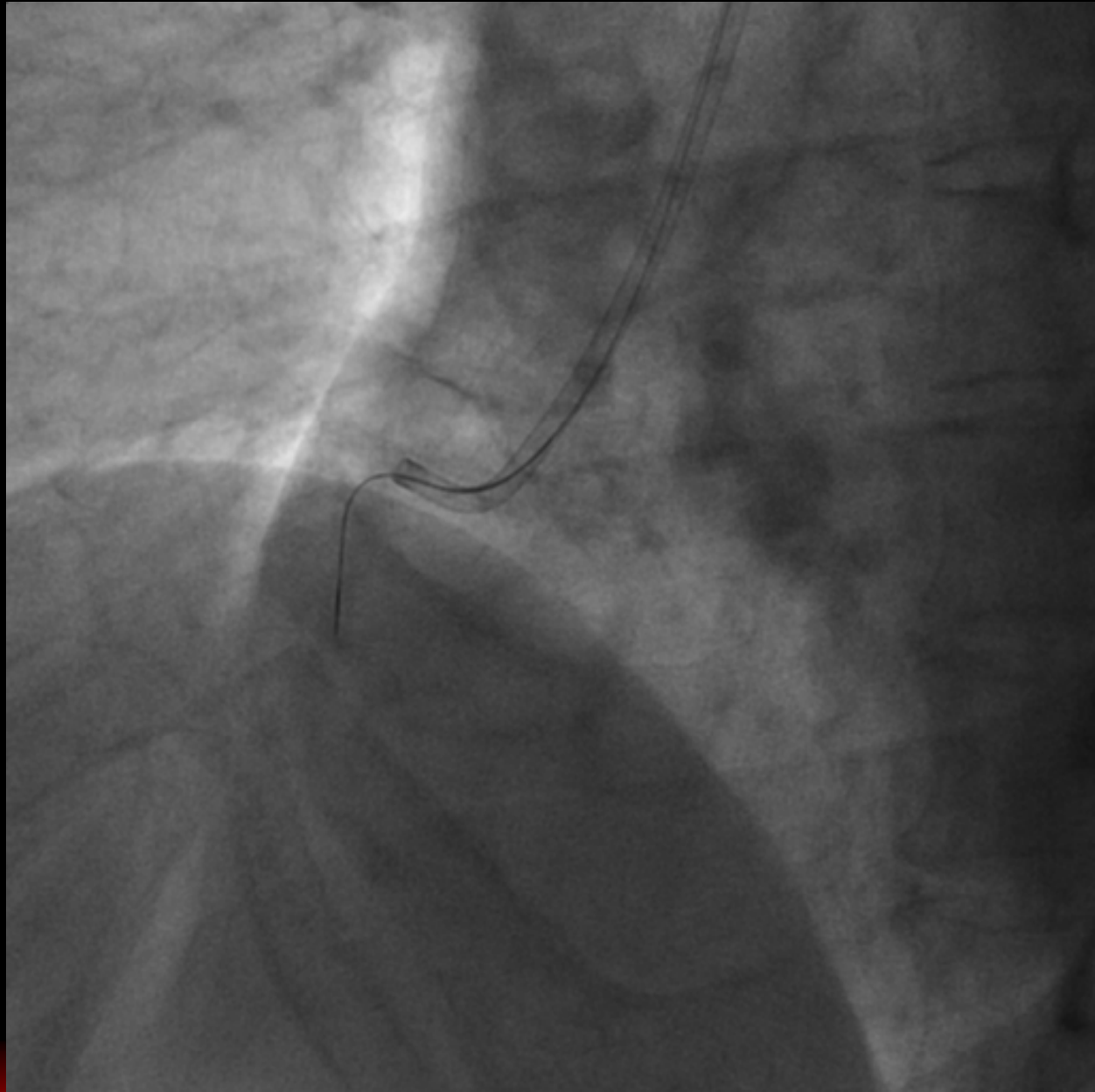


Case 1



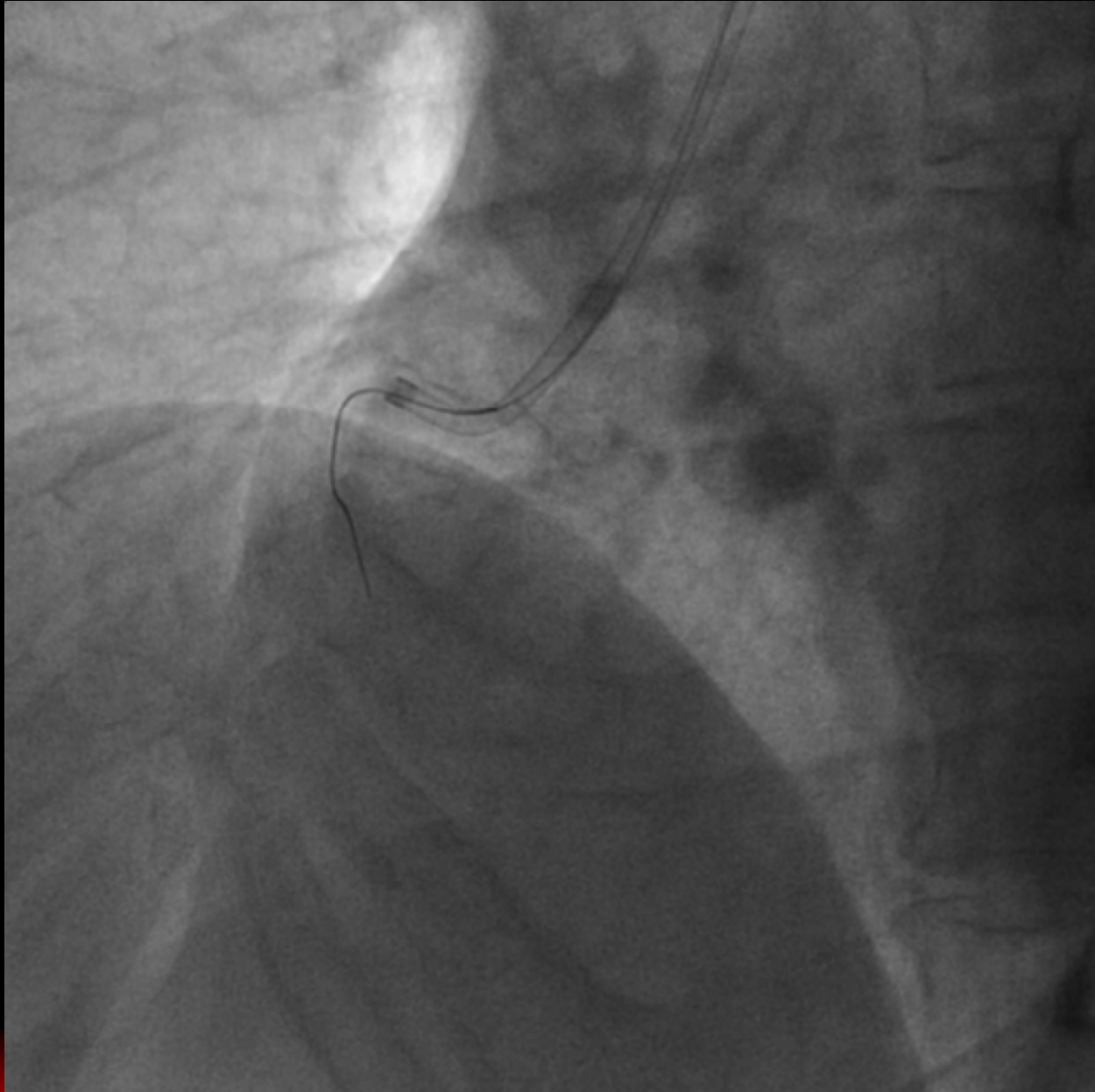


Wizard 3g



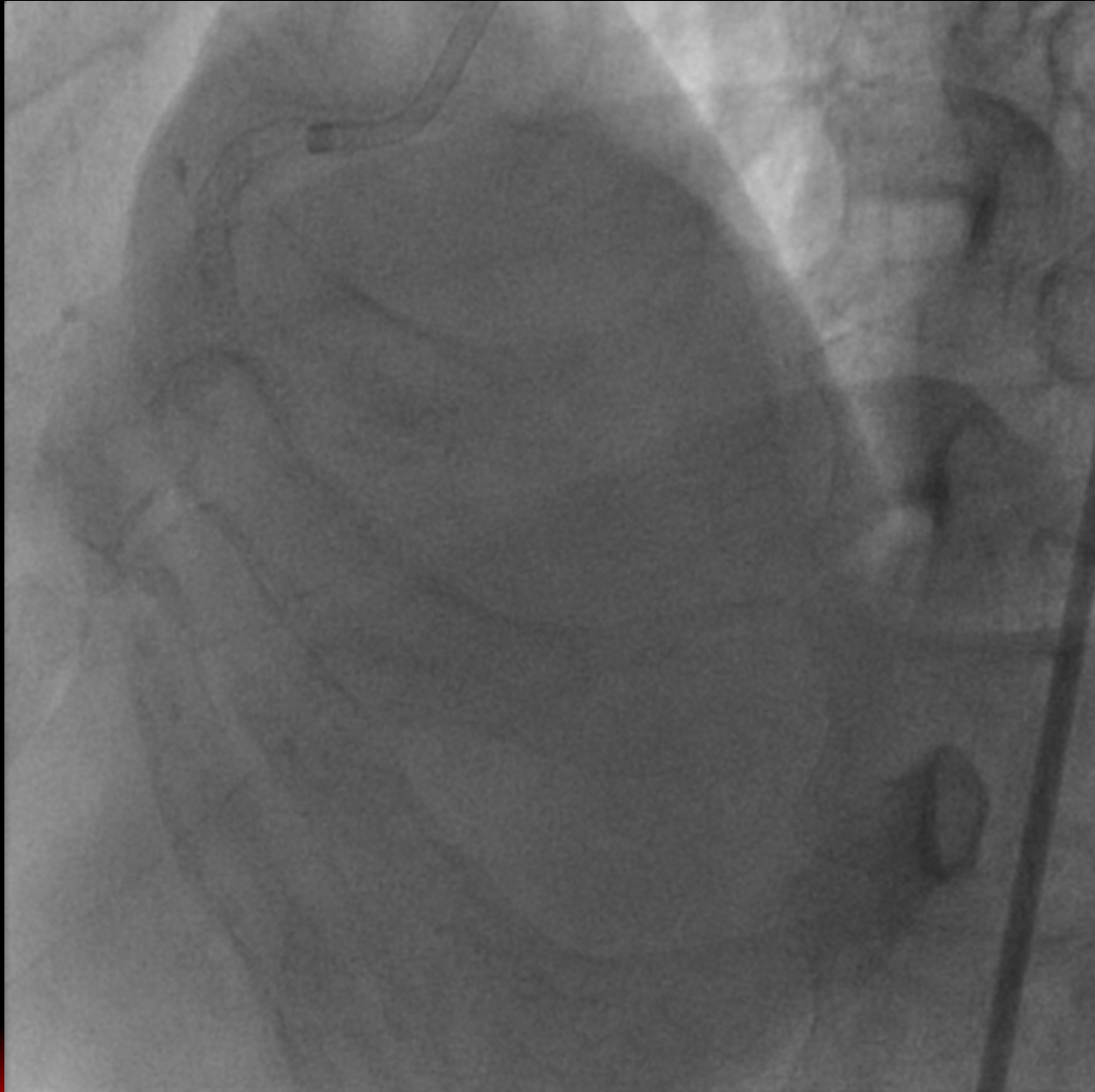


Wizard 3g



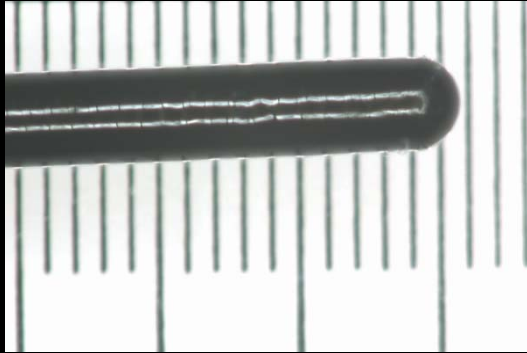


Final

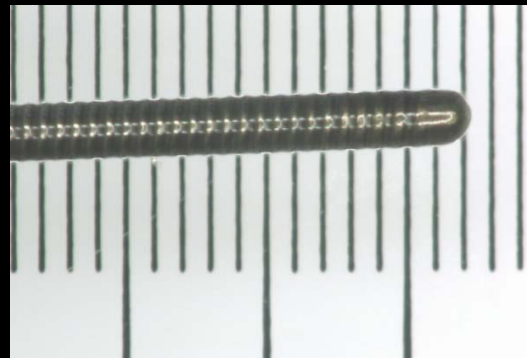




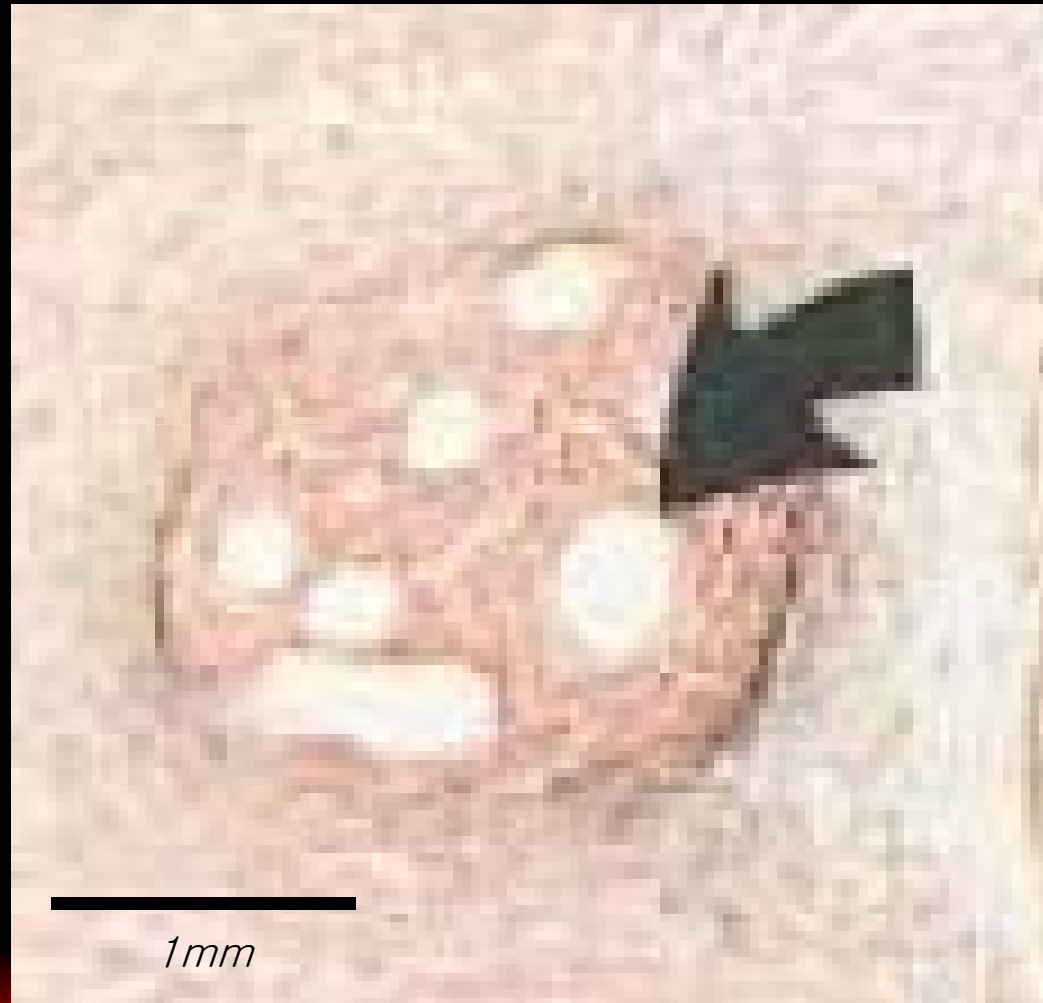
Microchannels and Wire Tip



0.014 inch : 0.36mm

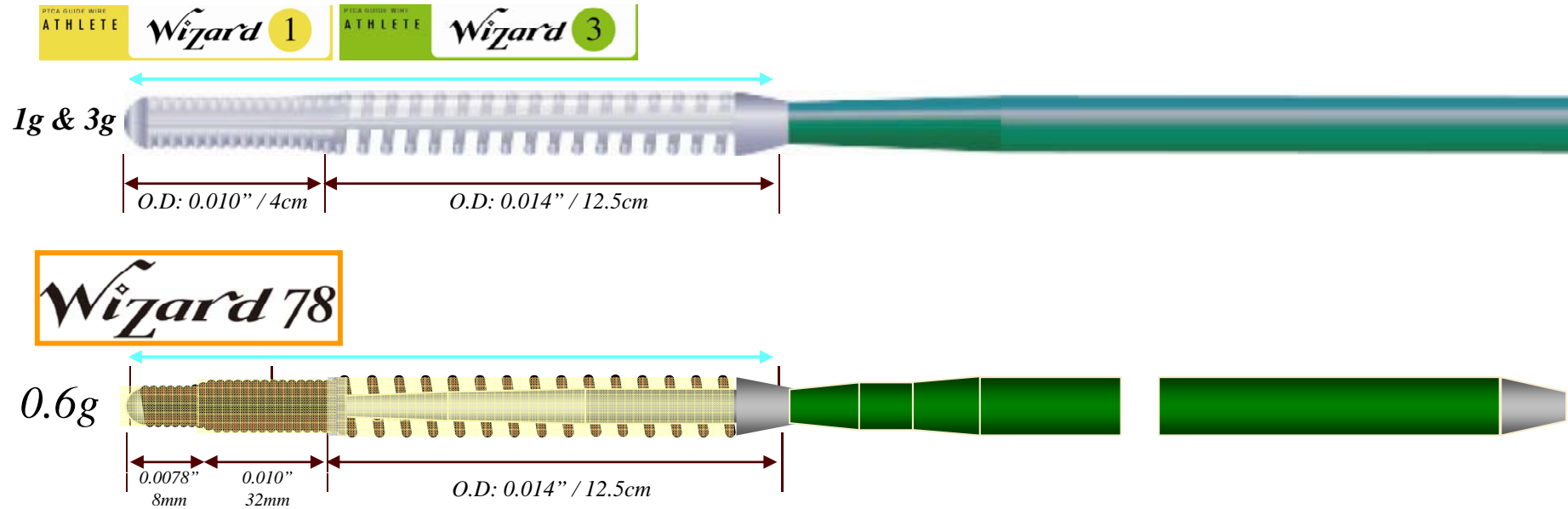


*0.009 inch :
0.23mm*





Wizard & Wizard78 Specifications

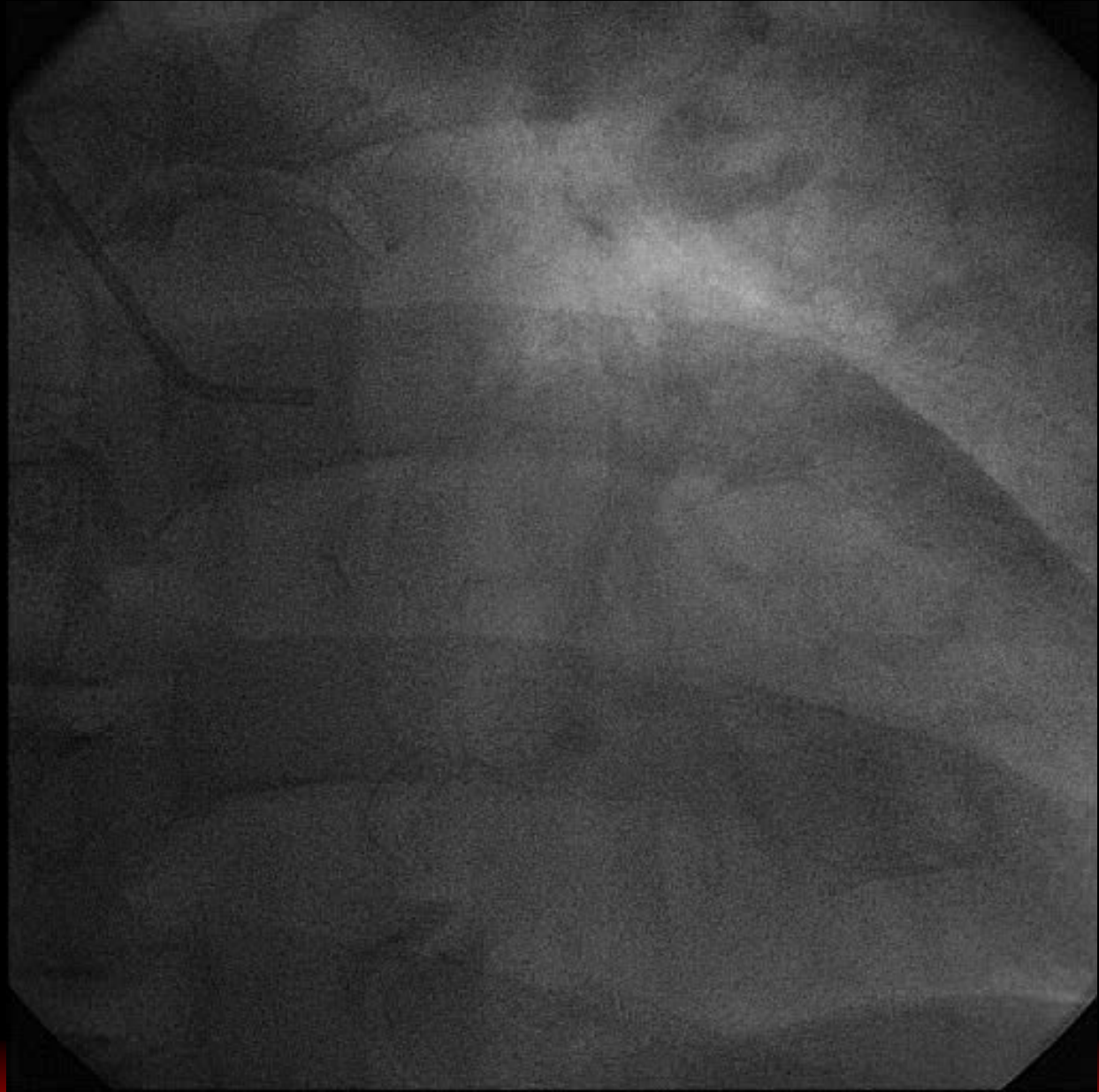


Model	Tip Stiffness	Distal Tip O.D (inch / mm)	Proximal Shaft O.D (inch)	Radiopaque	Coating
WIZARD	1g & 3g	0.010" / 0.254	0.014"	16.5cm	17cm Hydrophilic
WIZARD 78	0.6g	0.0078" / 0.198	0.014"	16.5cm	17cm Hydrophilic



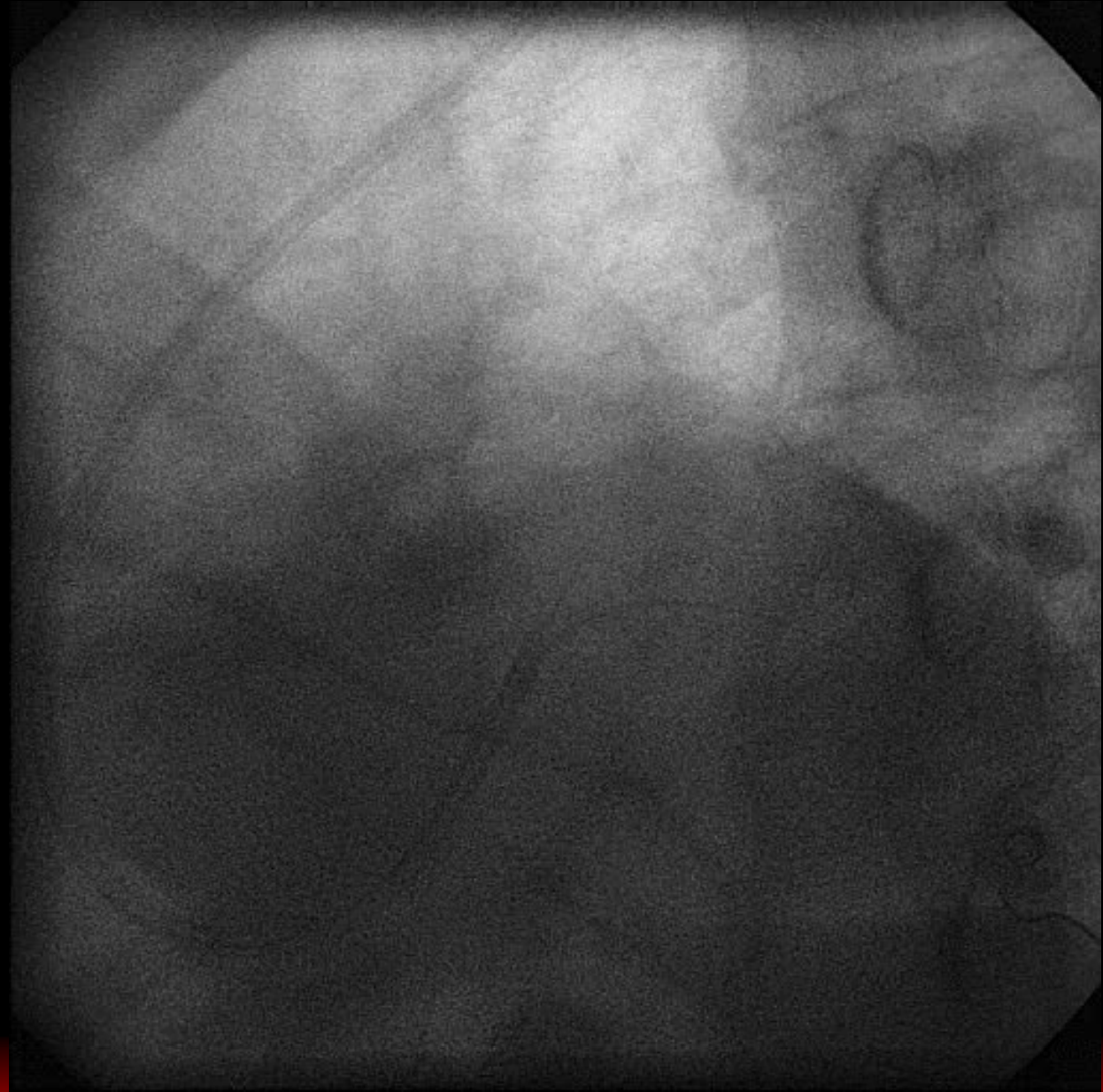
Case 2

RCA





Spider View



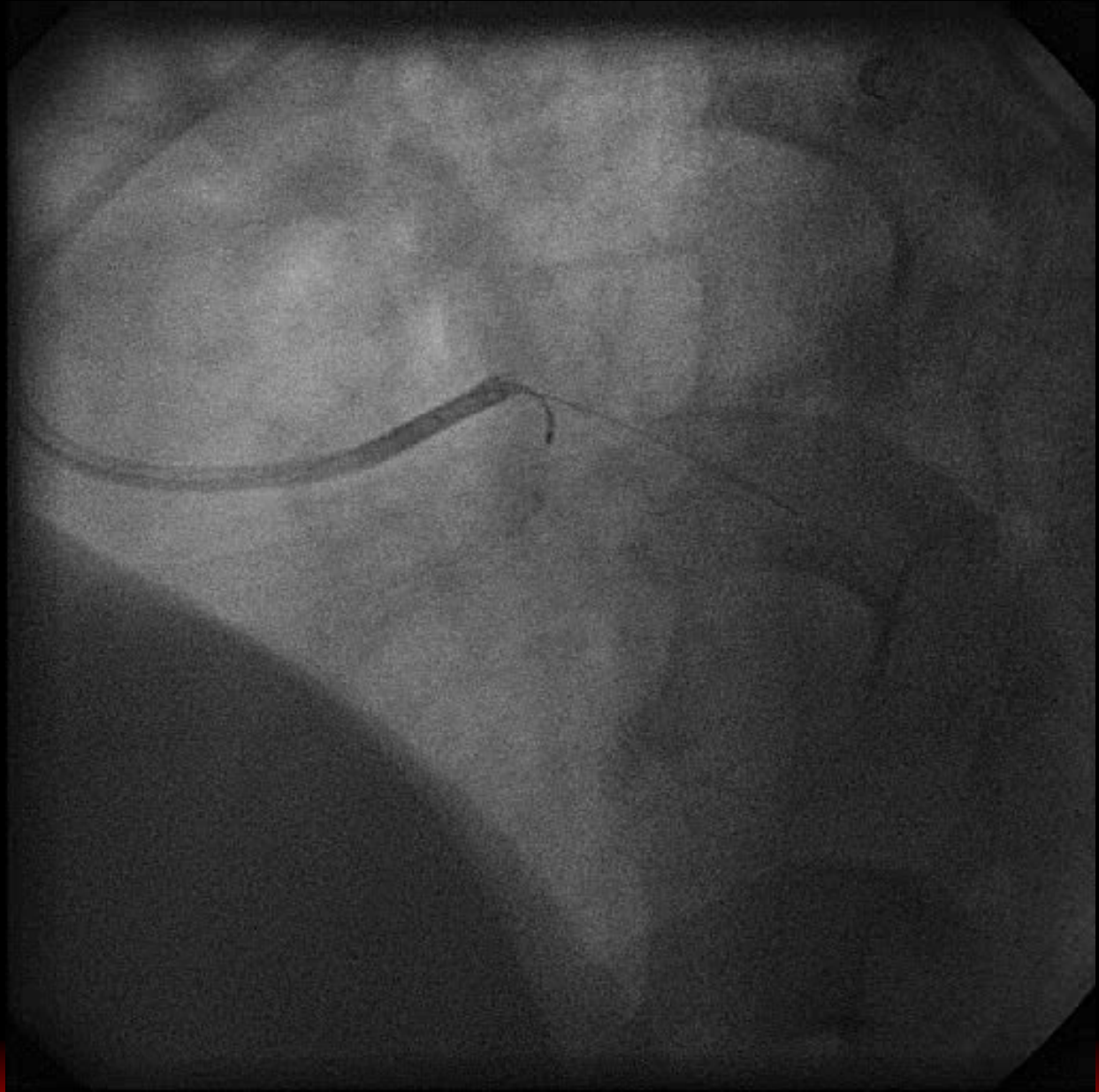


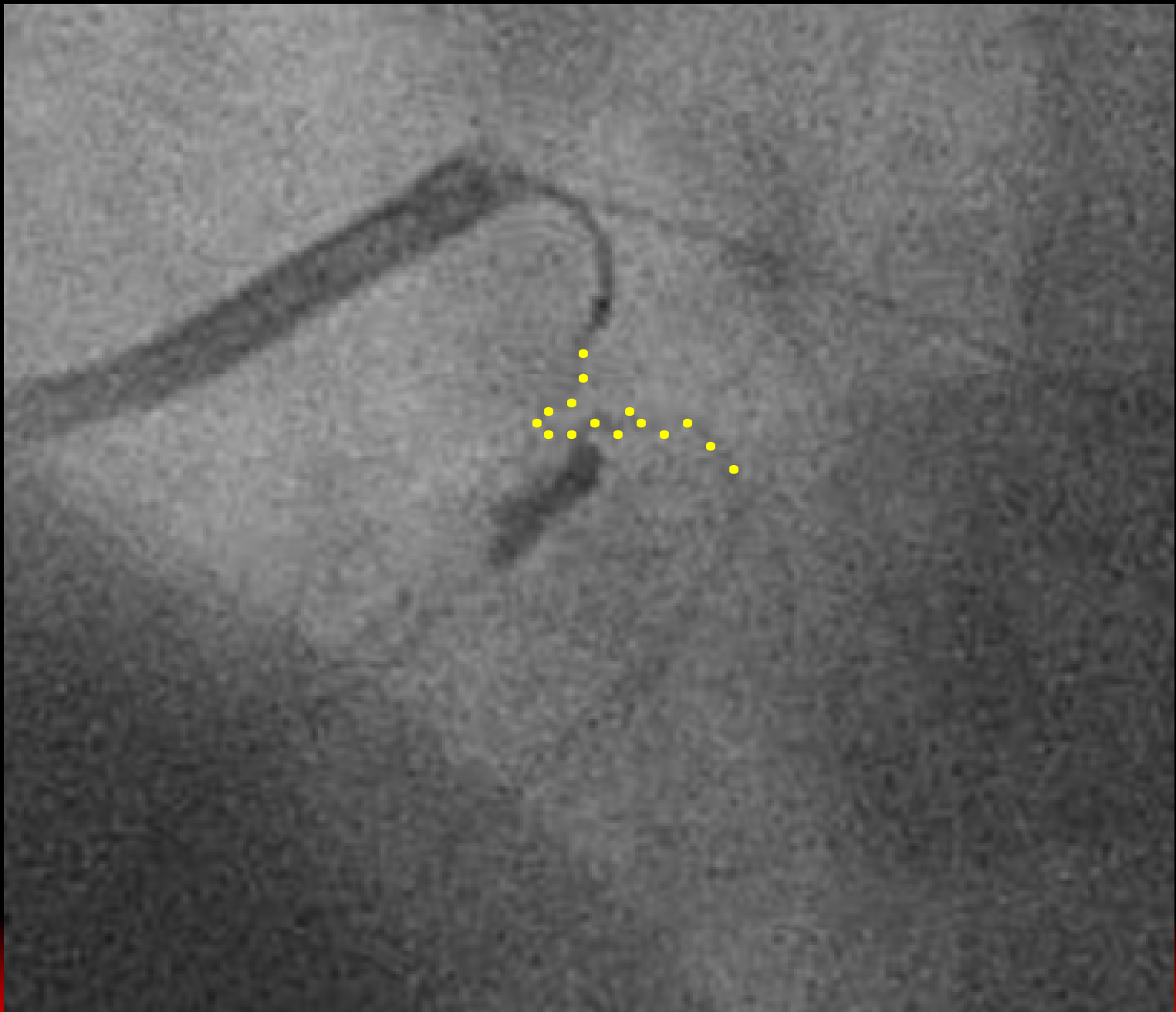
Tip Injection





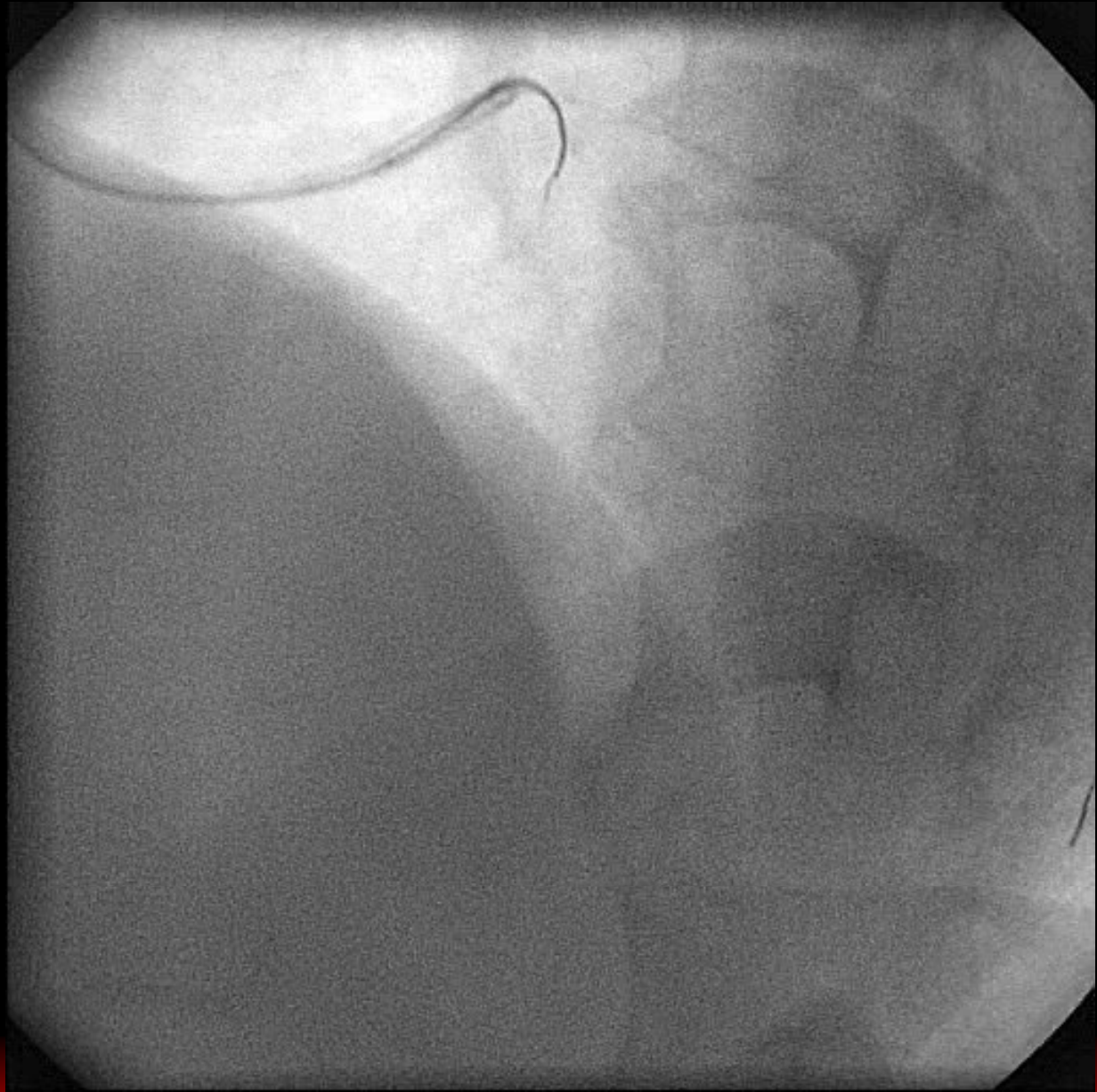
Tip Injection





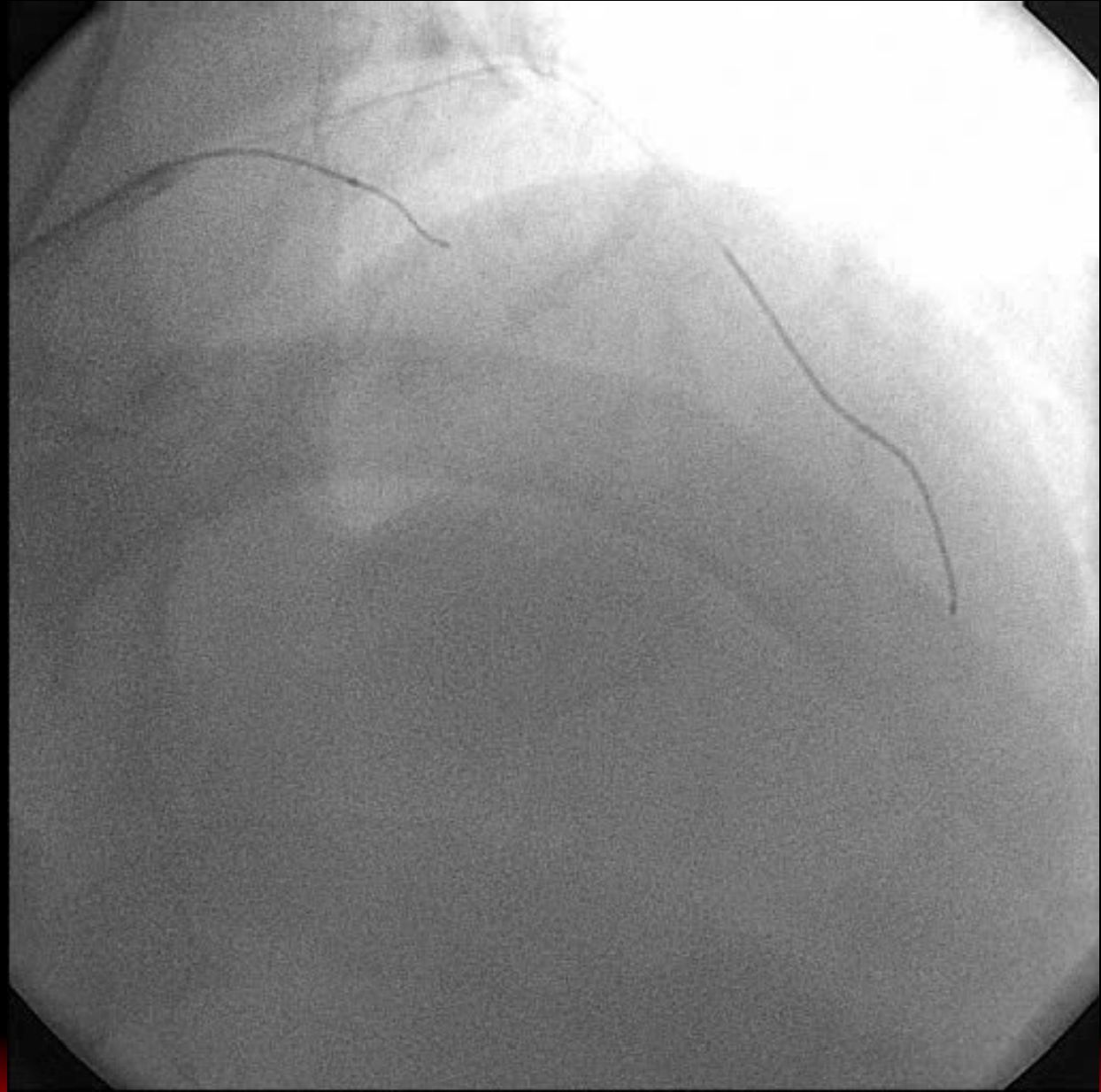


Fielder-XT



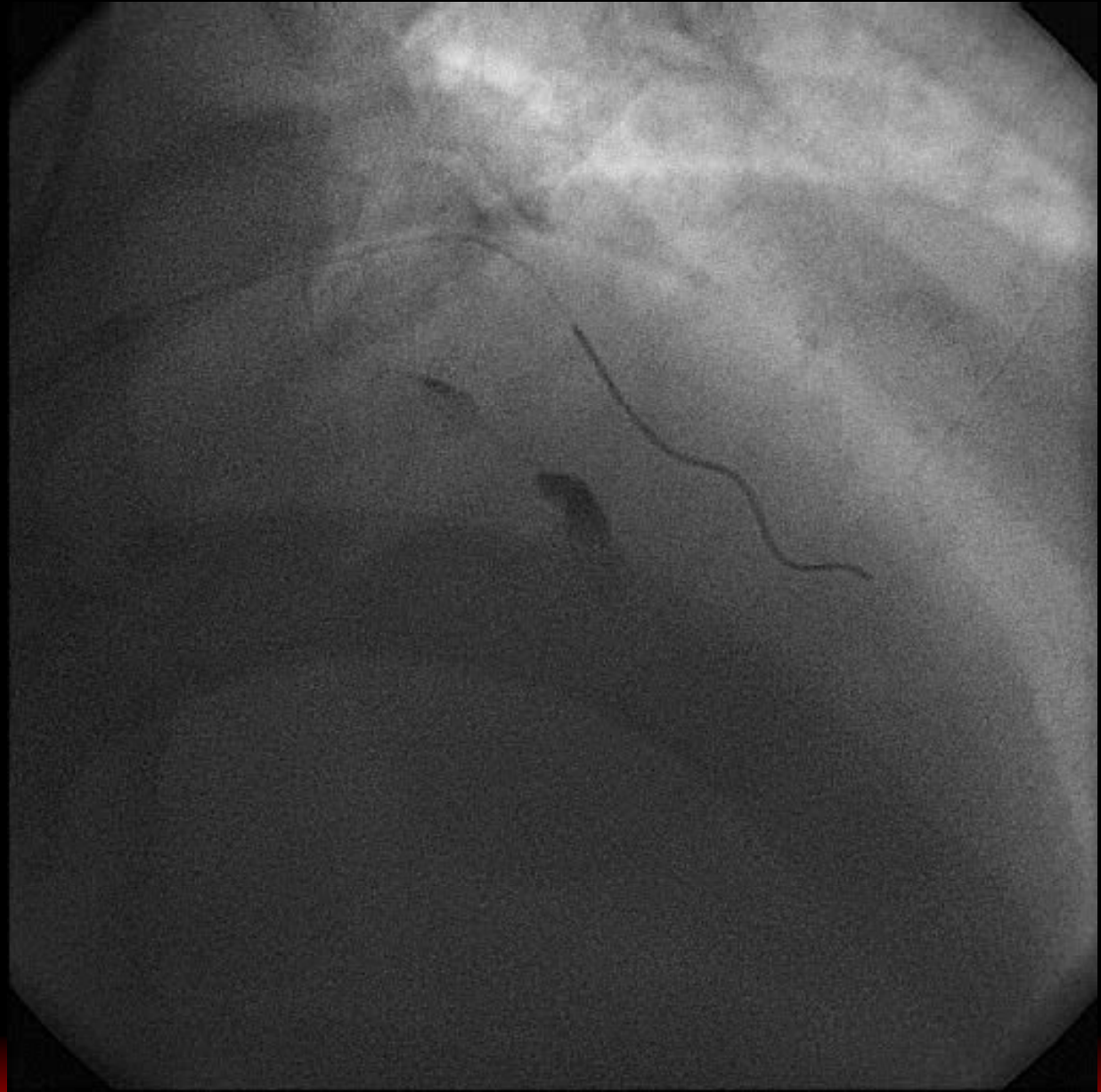


Fielder-XT



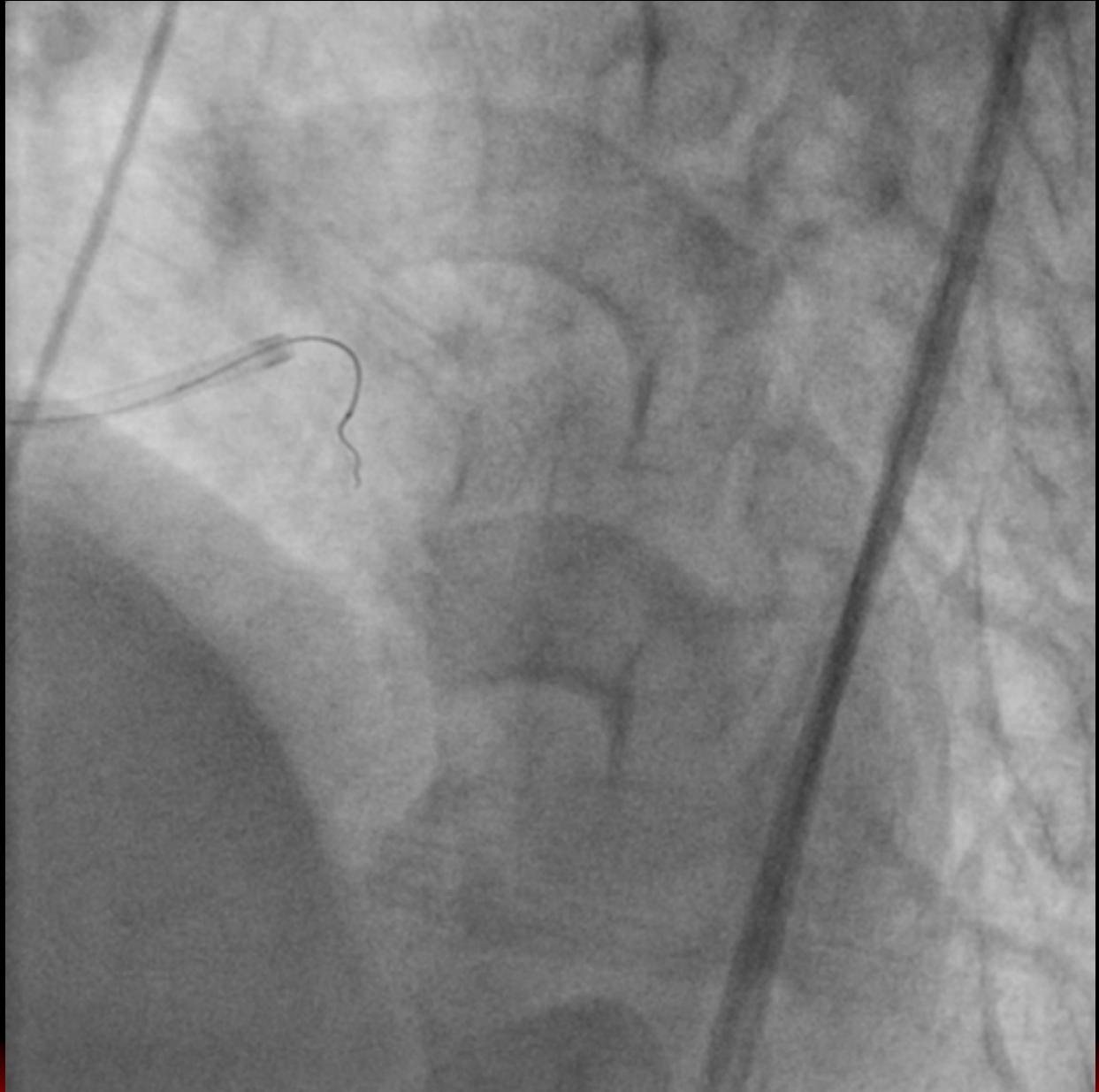


Final





Wizard 78



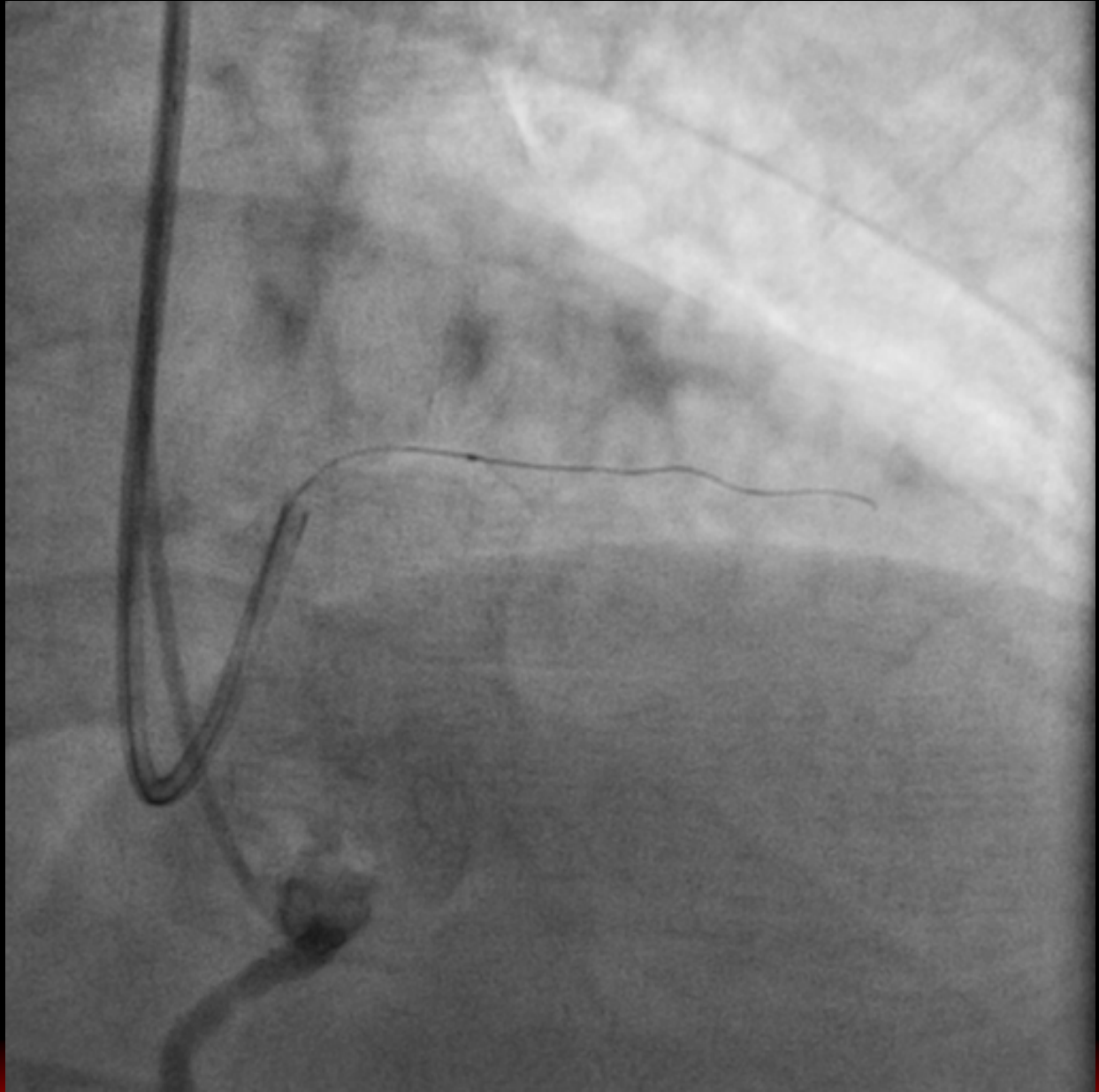


Wire Manipulation



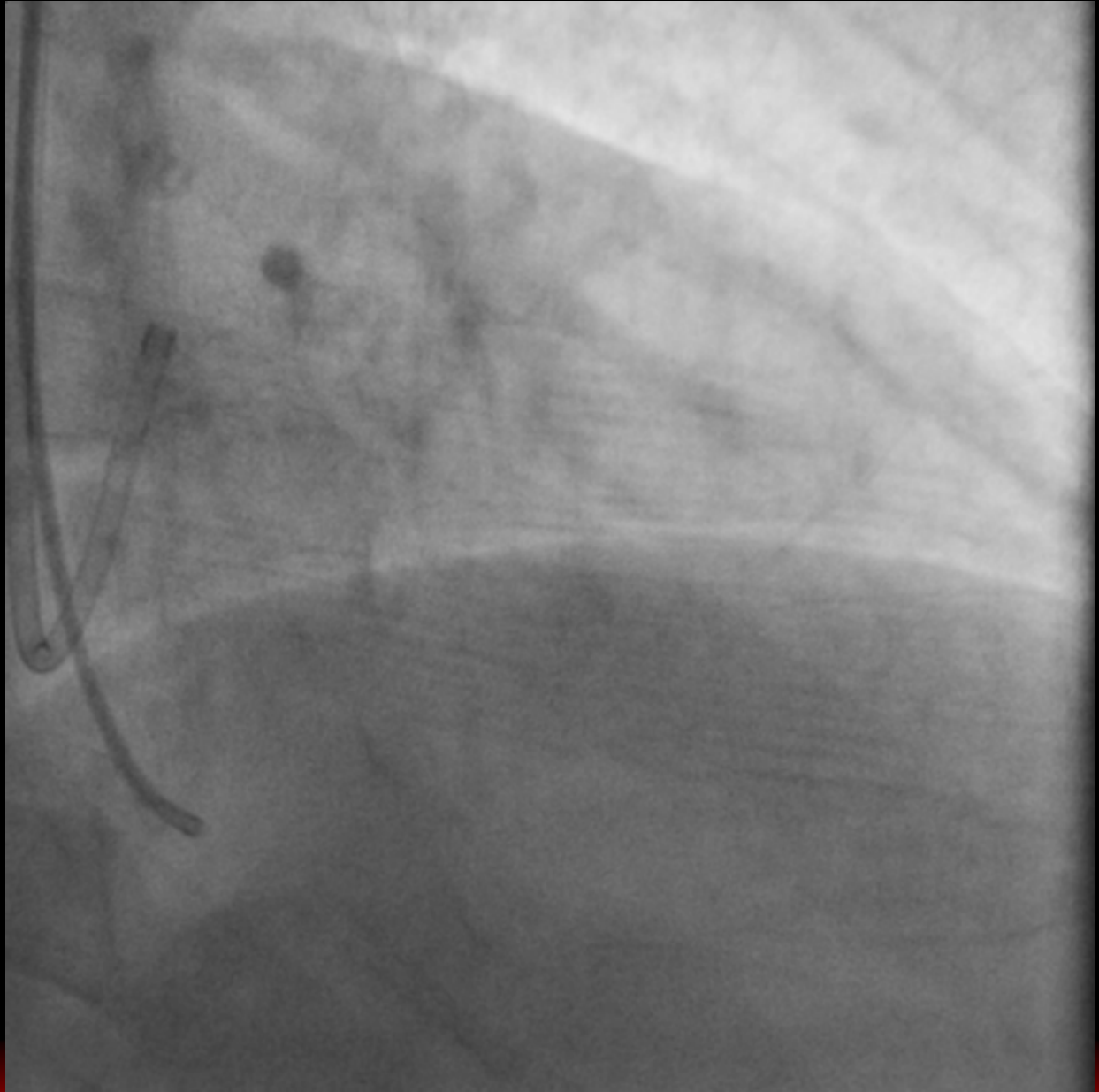


Wizard 78





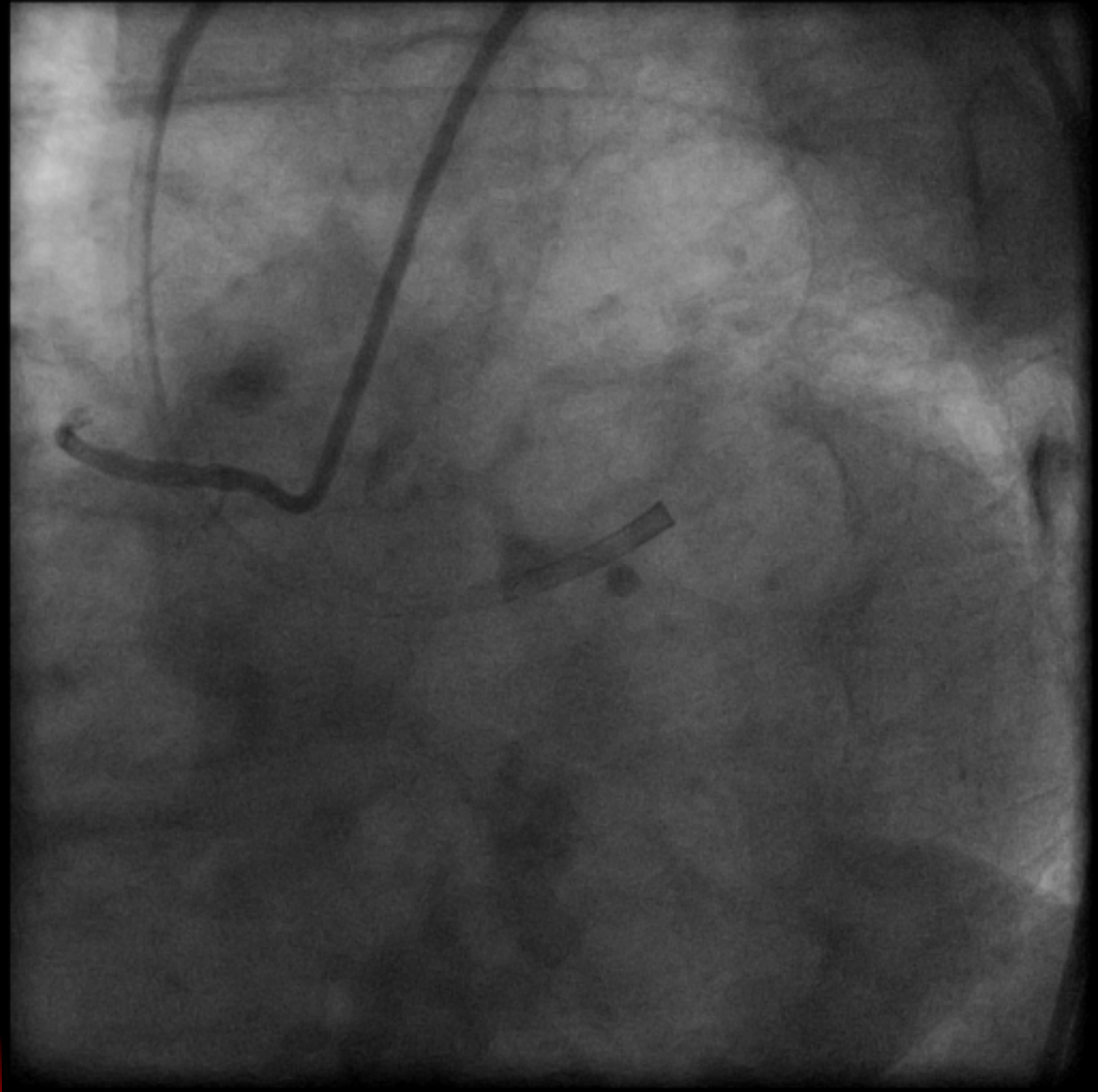
Final





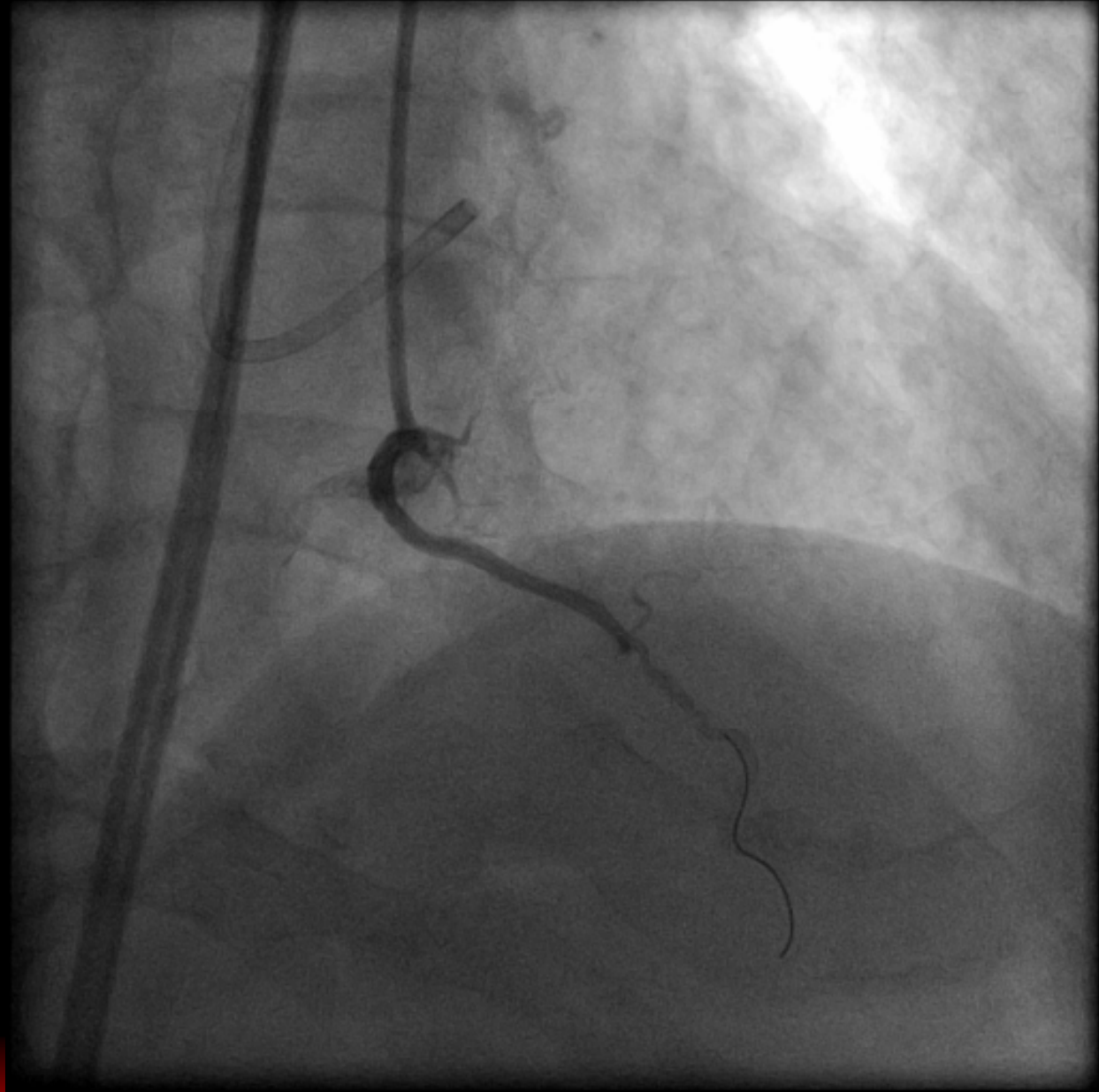
Case 3

LAD



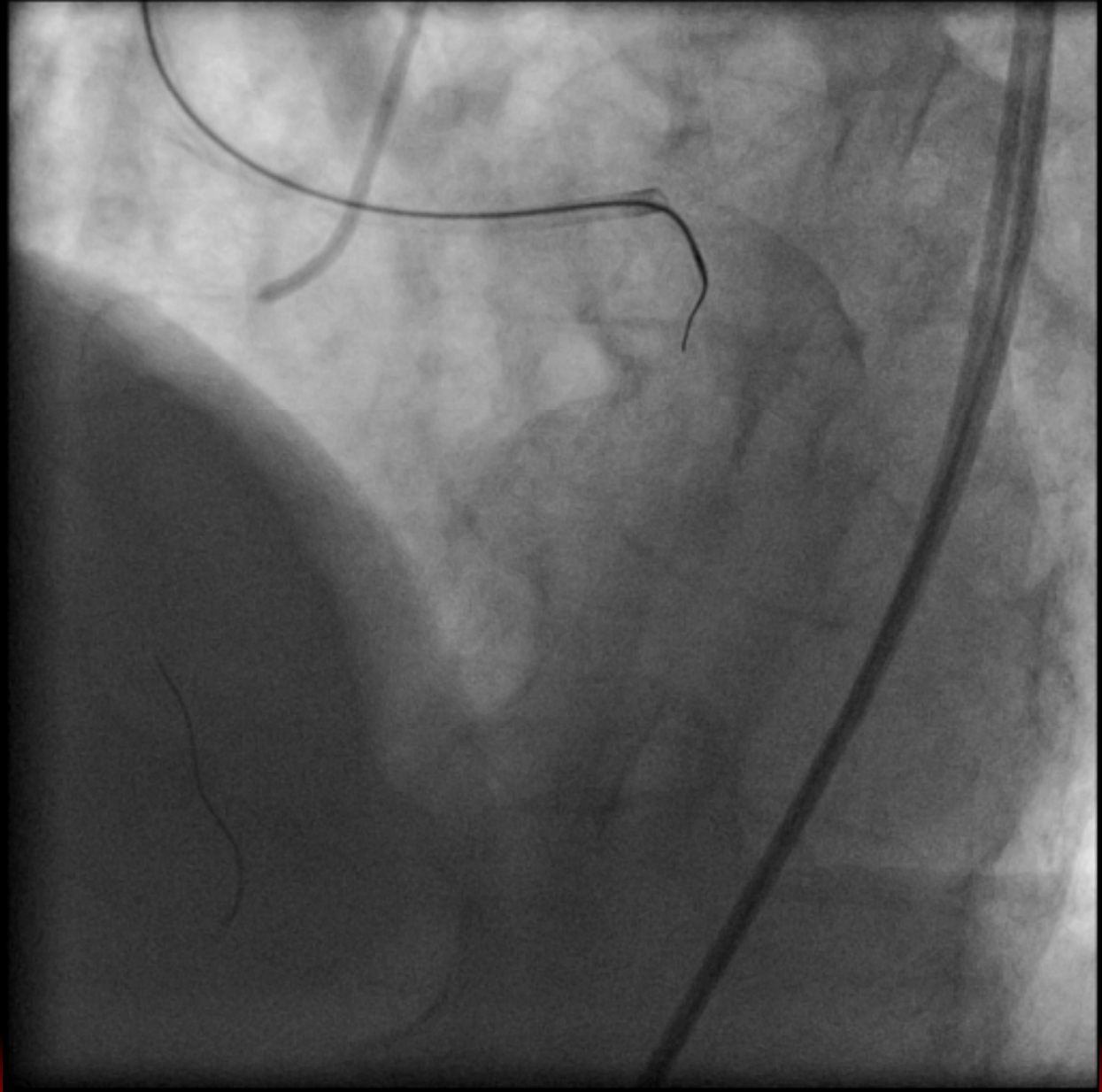


RAO Cranial



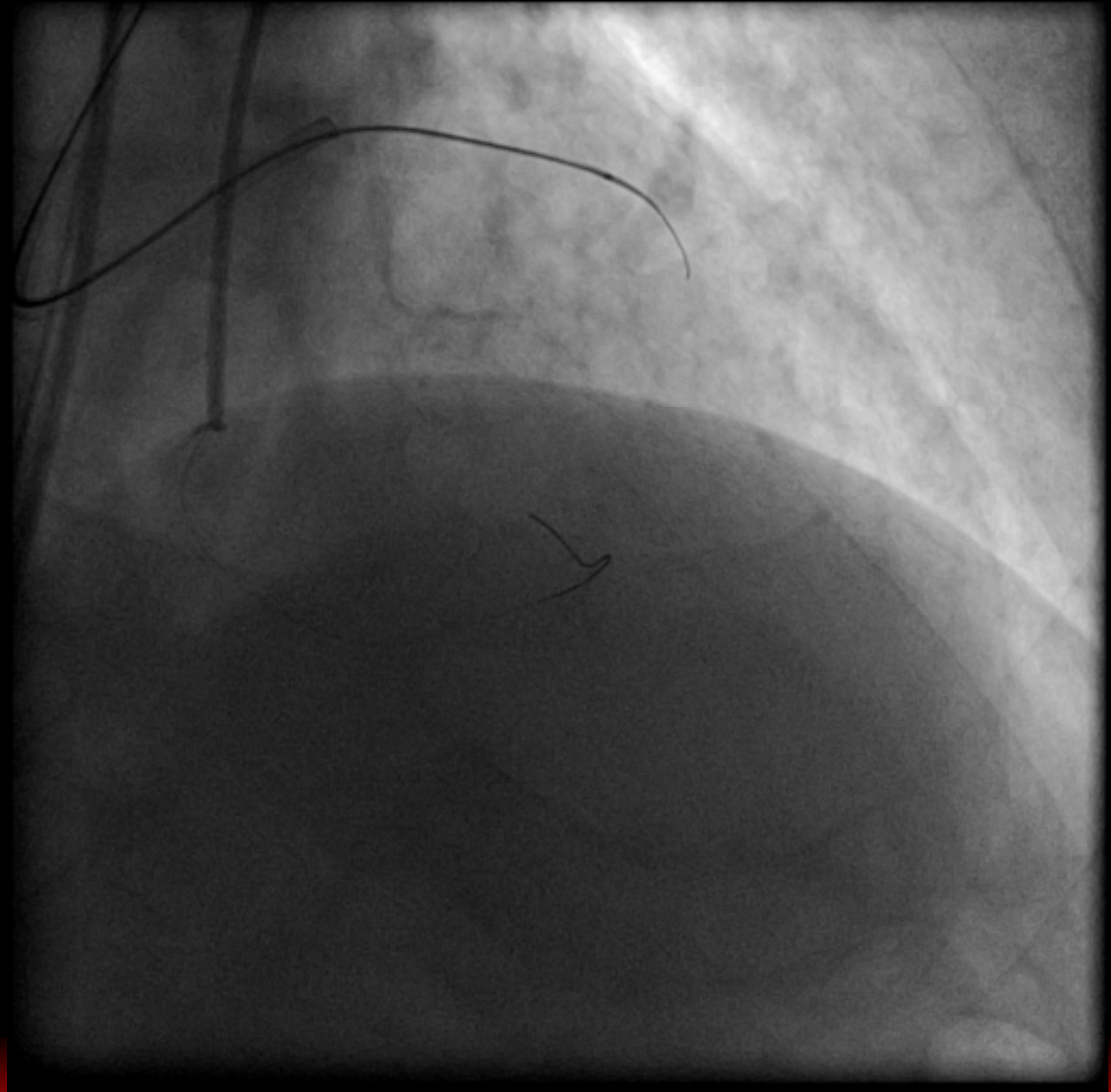


PCI





Conquest Pro





ASAHI Corsair

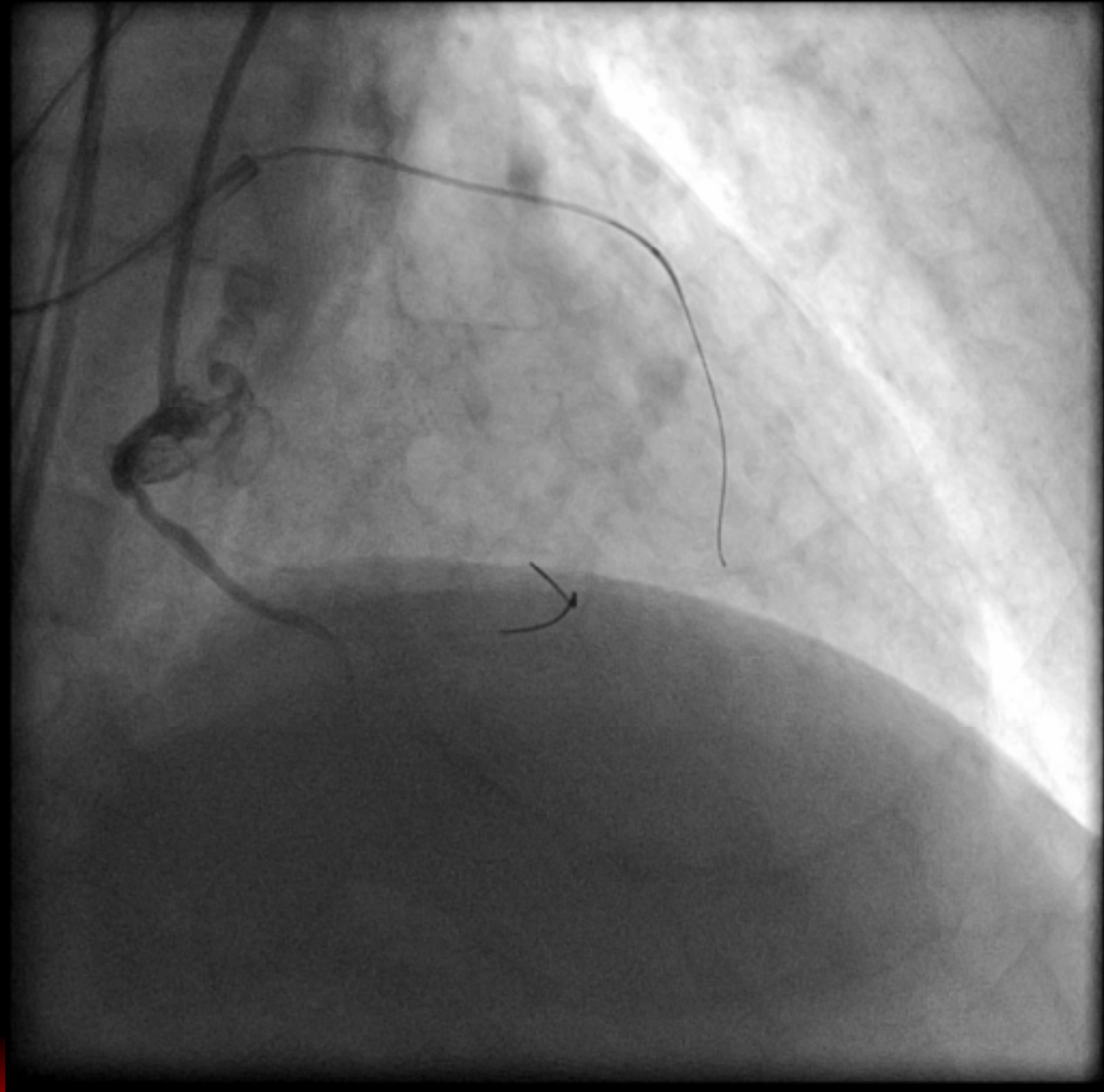
Microcatheter



ASAHI Corsair was originally developed as a septal channel dilator, to ease retrograde approaches for CTO-PCI. This is a unique device that can be used both as a microcatheter and as a support catheter.

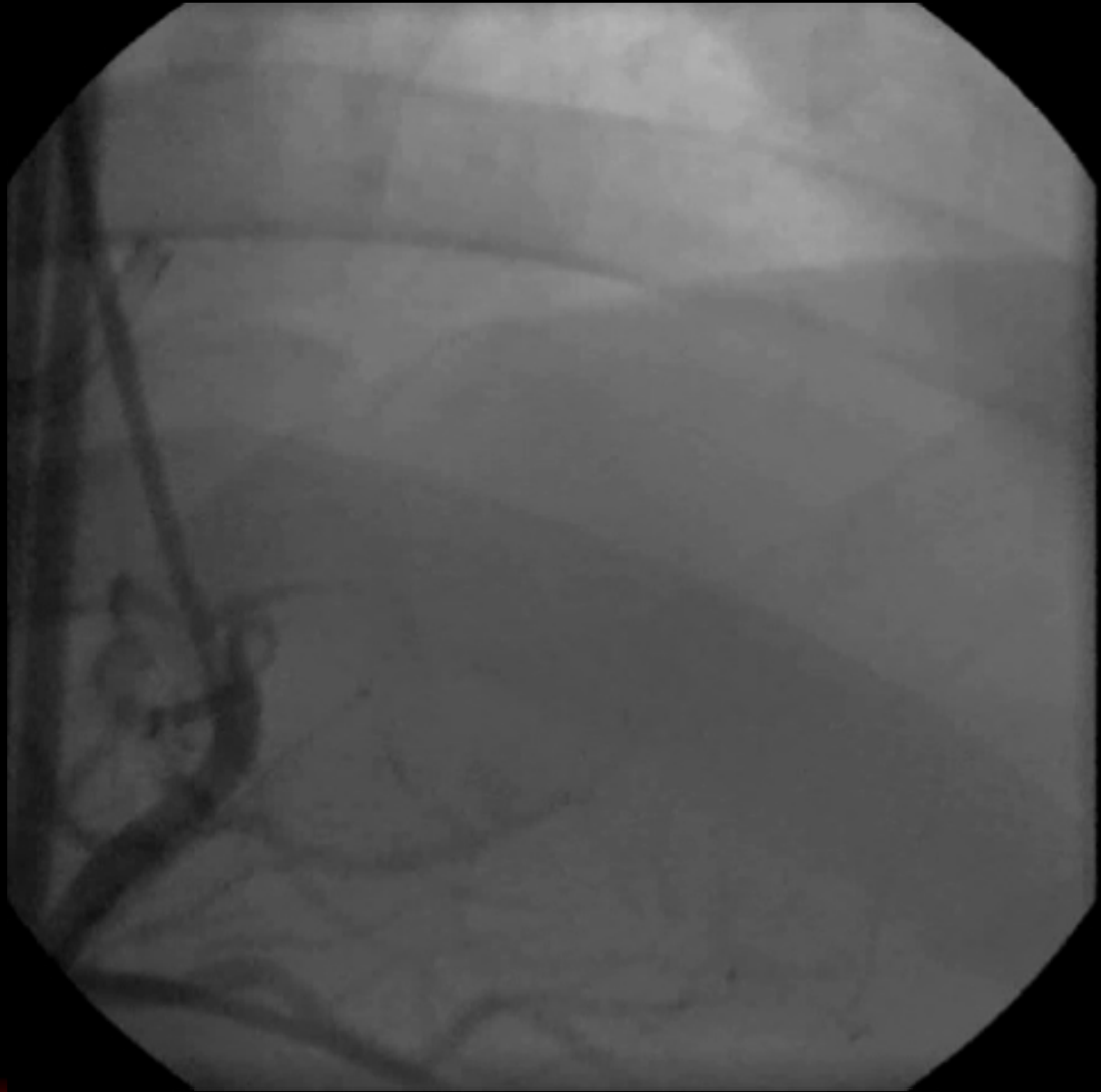


Fielder-XT



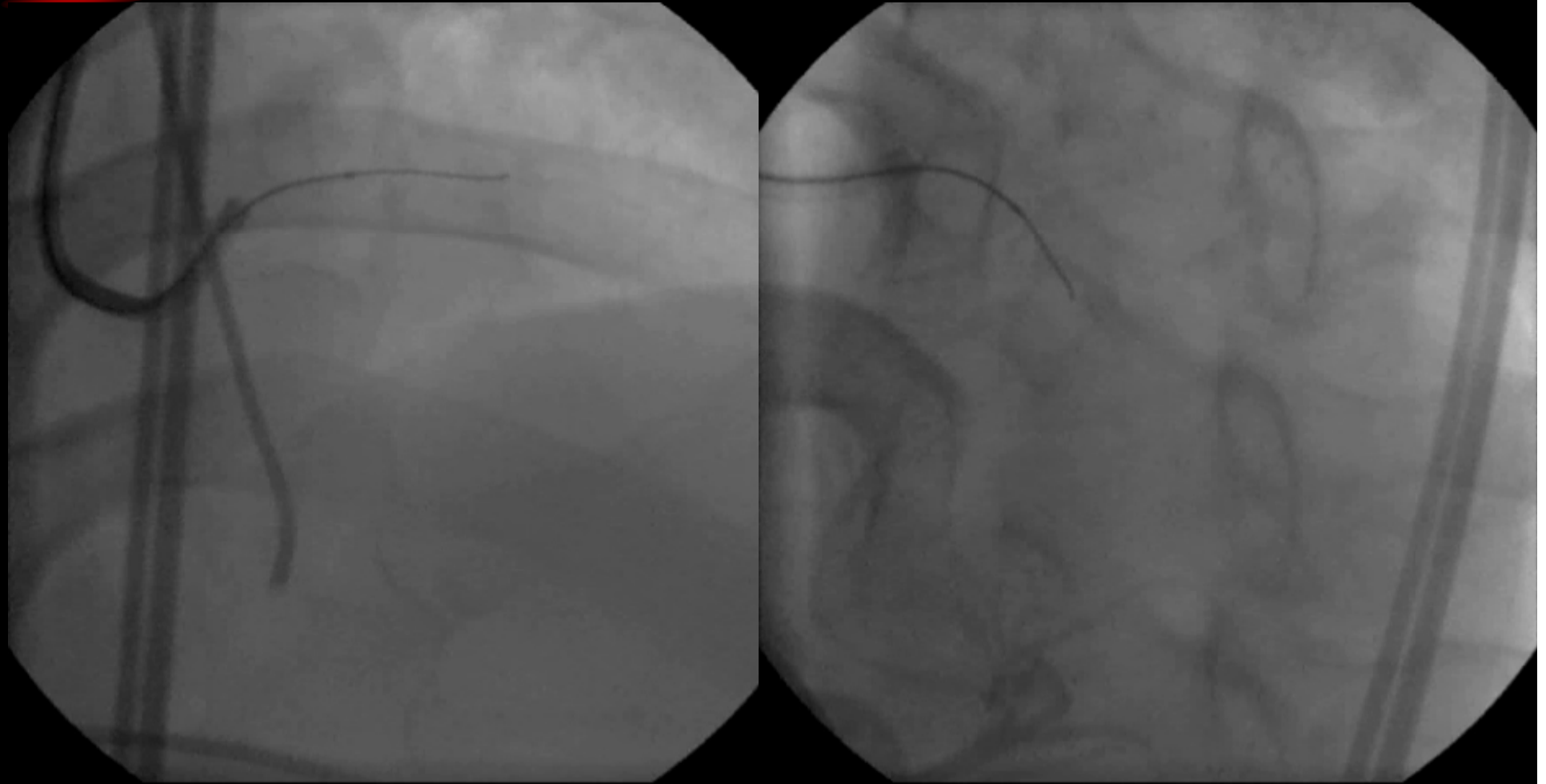


Case 4





GW Manipulation





Inadequate Wire Manipulation





Adequate Wire Manipulation





Far Torque Device Position



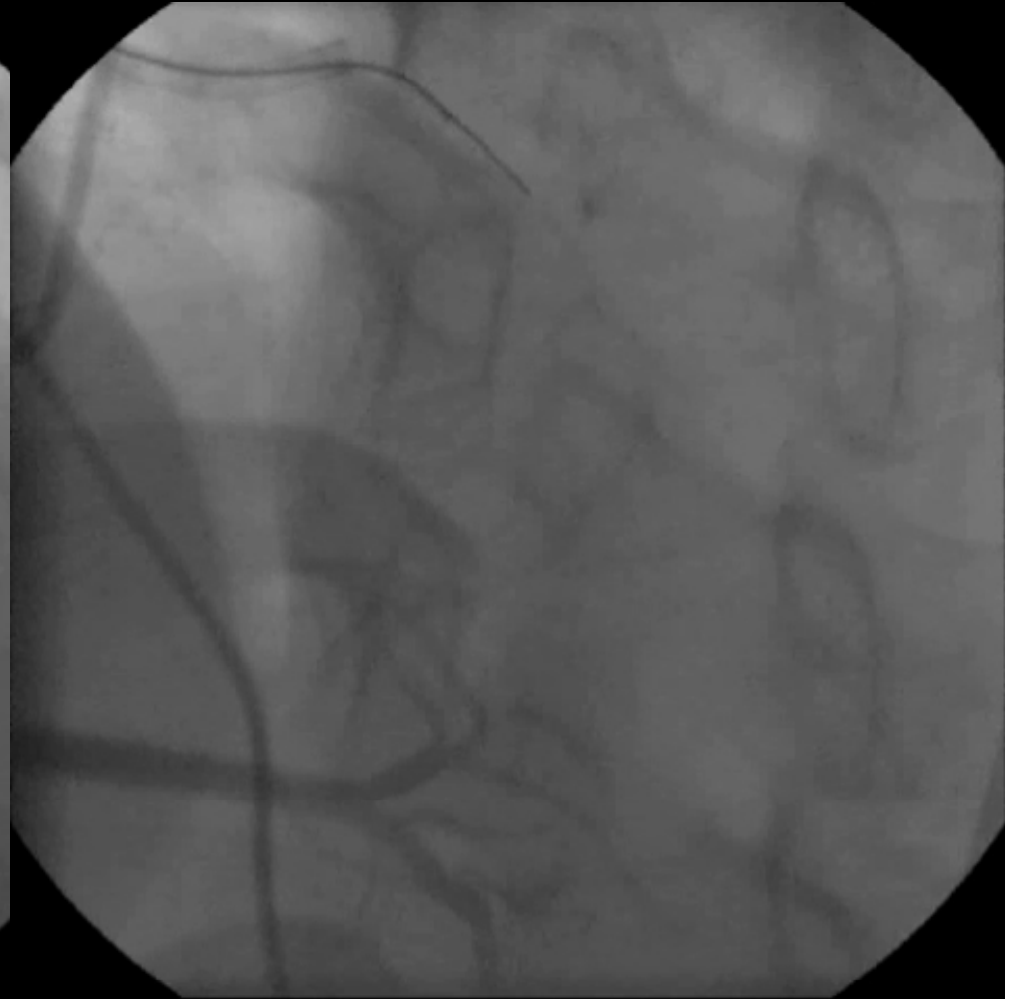
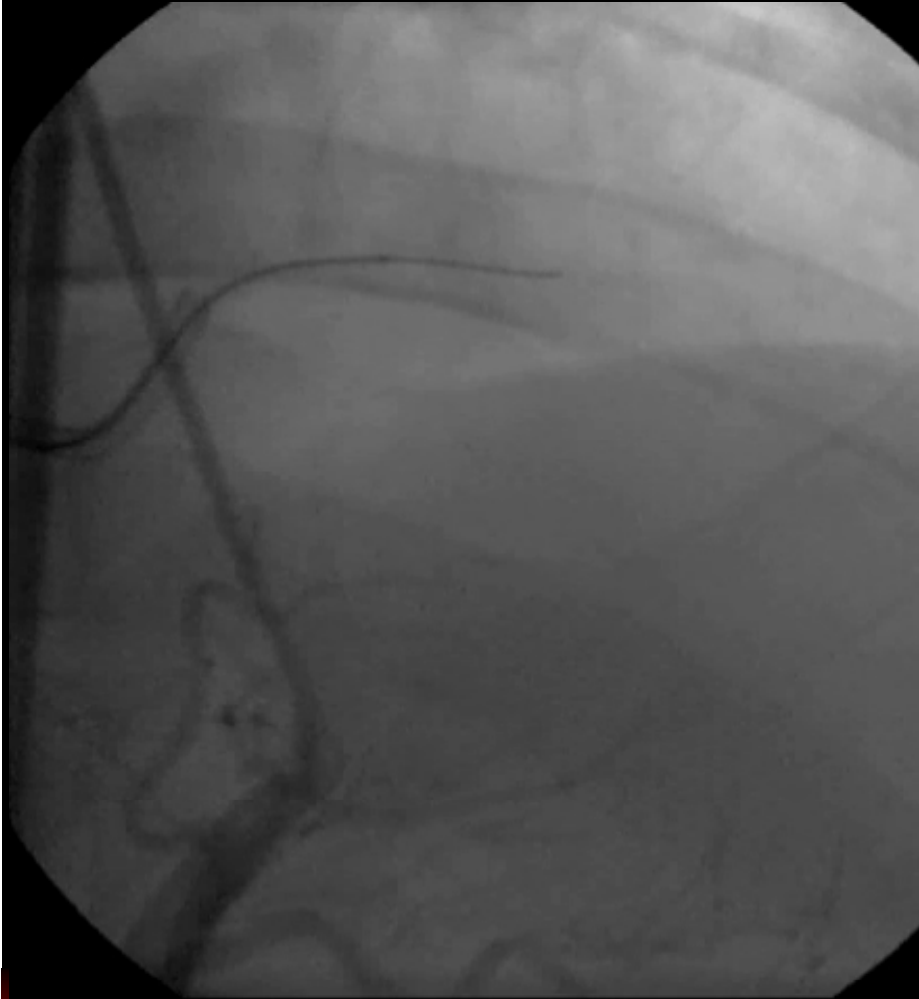


Close Torque Device Position





Before Penetration





**Just after
Penetration**



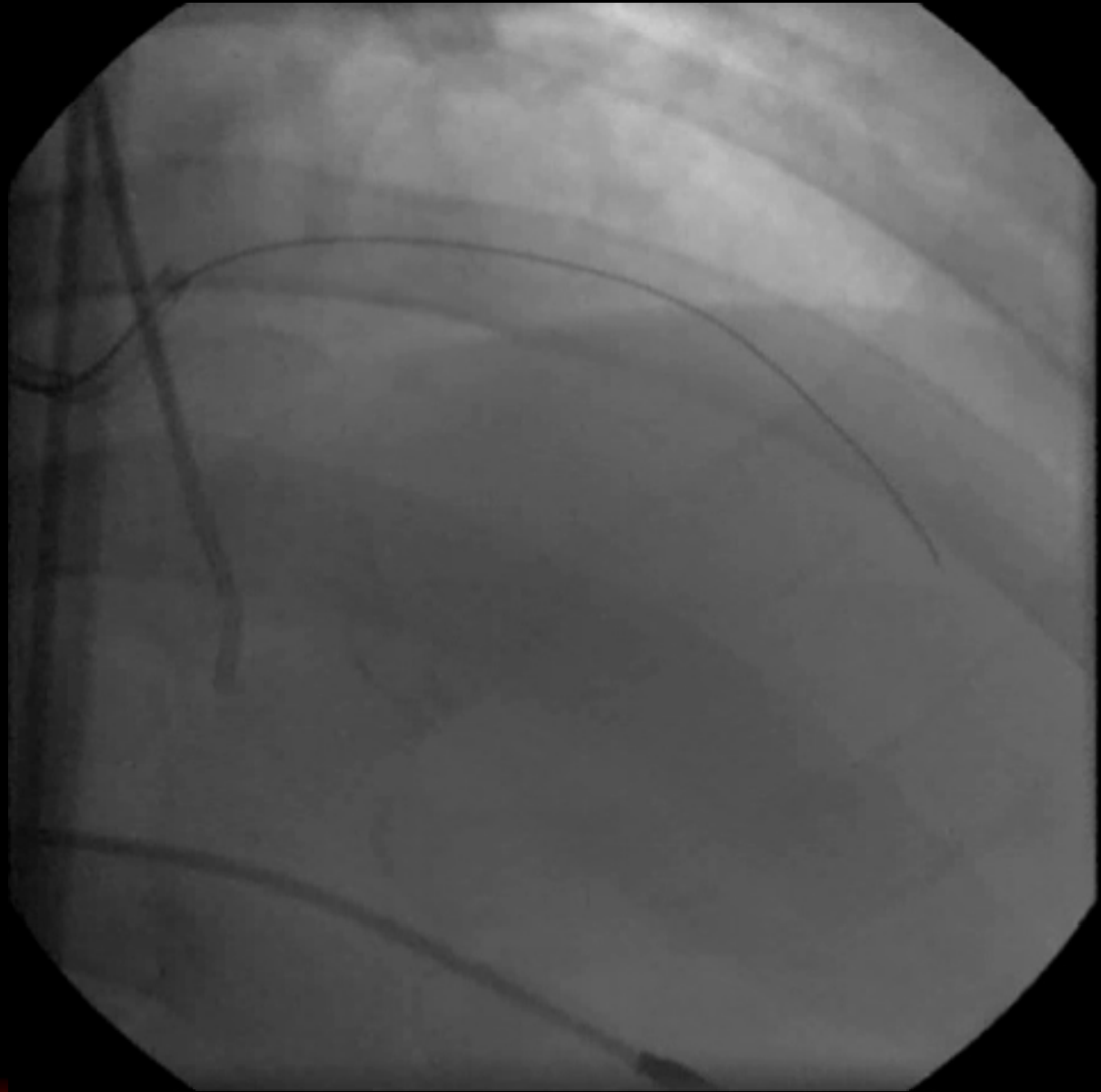


GW Manipulation



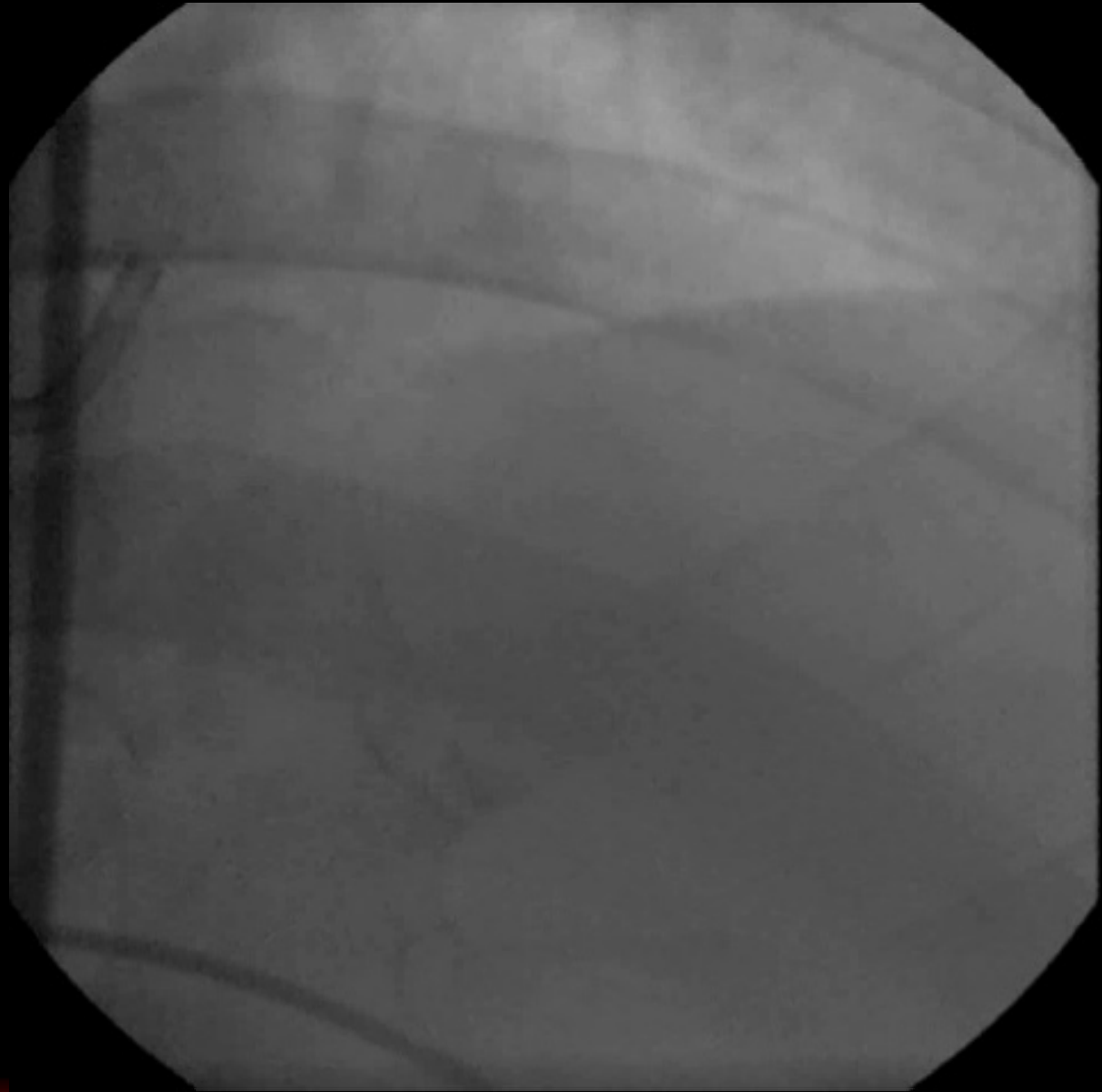


Successful Wiring





Final





Trends in Antegrade Approach

- ✓ Micro Channel/Loose Tissue Tracking
- ✓ Antegrade Application of Corsair
- ✓ Step-up and Step-down Technique