

Transcatheter Aortic Valve Implantation: Valve-in-valve bailout

Paul TL Chiam

MBBS, MRCP, FESC,
FACC, FSCAI



National Heart
Centre Singapore

SingHealth

- 79 year male
- R lobectomy and radiotherapy for CA lung 30 yrs ago
- Gastrectomy and hepatectomy for CA stomach and liver 20 and 10 yrs ago respectively
- Severe AS
- NYHA III

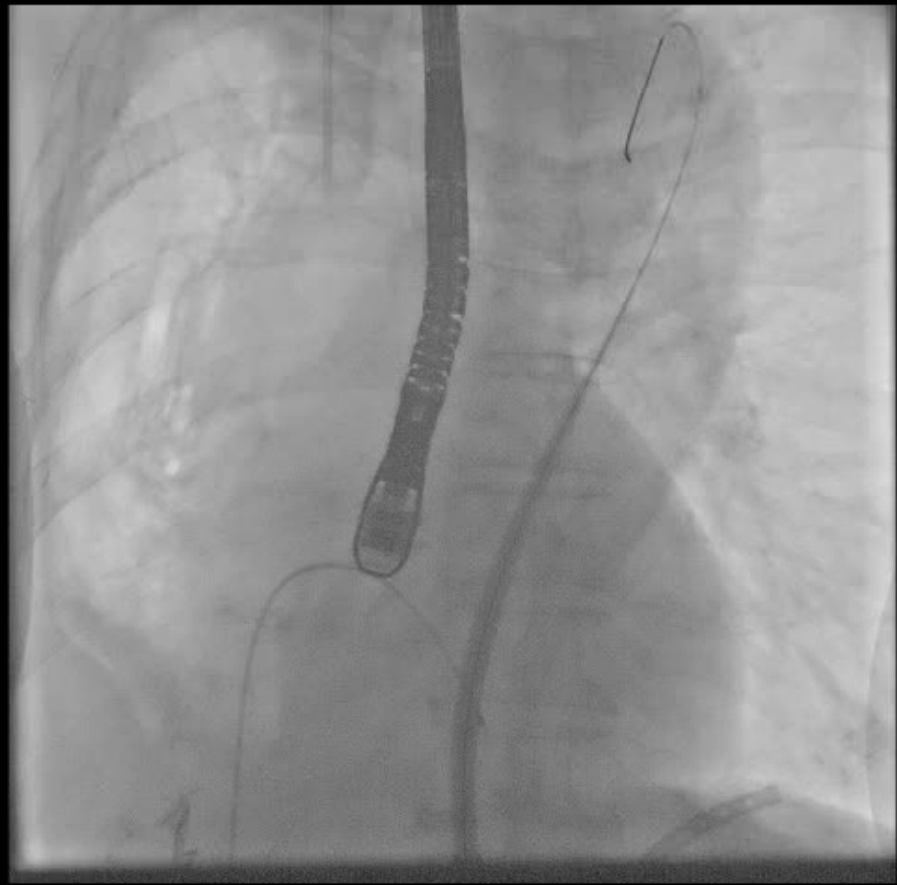
- Echo: calcified AV, MPG 50mmHg , AVA 0.6cm²
- Annulus: 20-21mm (2 separate echos)
- FEV1 = 0.8L
- Coronary angiogram showed: TVD
- Assessed to be at increased surgical risk
- Referred for TAVI

- Intra-procedural TEE showed annulus of 20-21mm
- Planned for 23mm Sapien XT valve
- Right groin cutdown
- Advancement of the 18F NovaFlex sheath

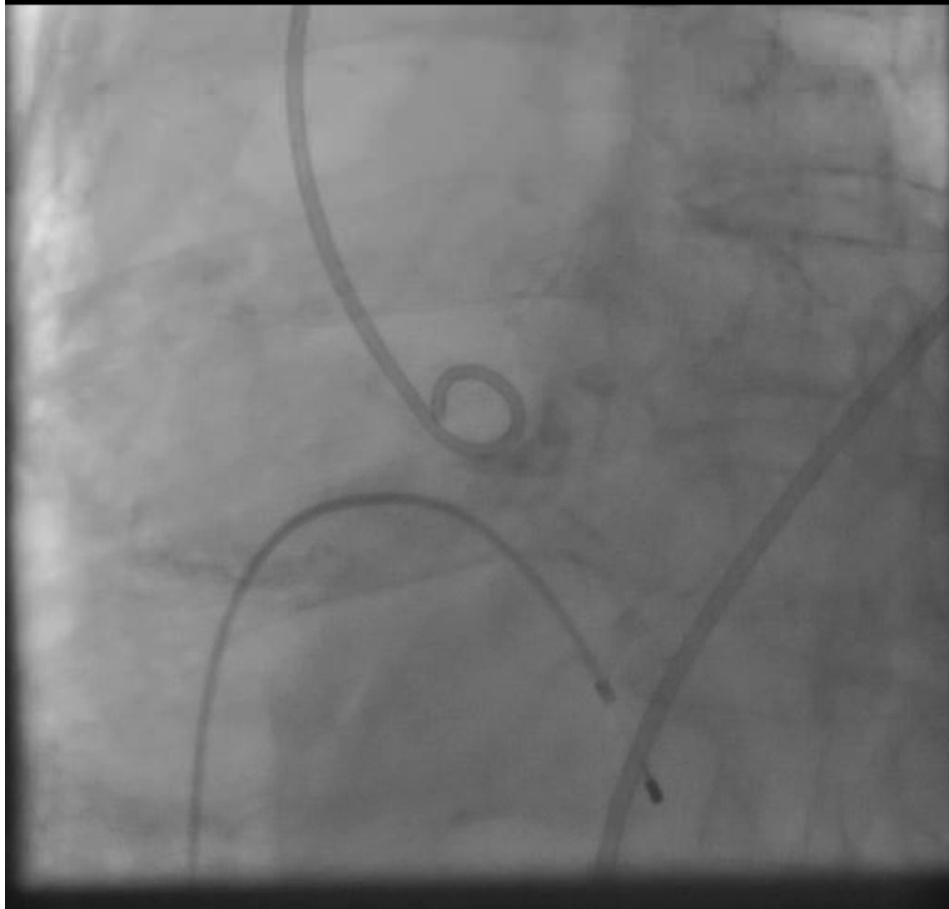
Lossy compression - not intended for diagnosis



Lossy compression - not intended for diagnosis



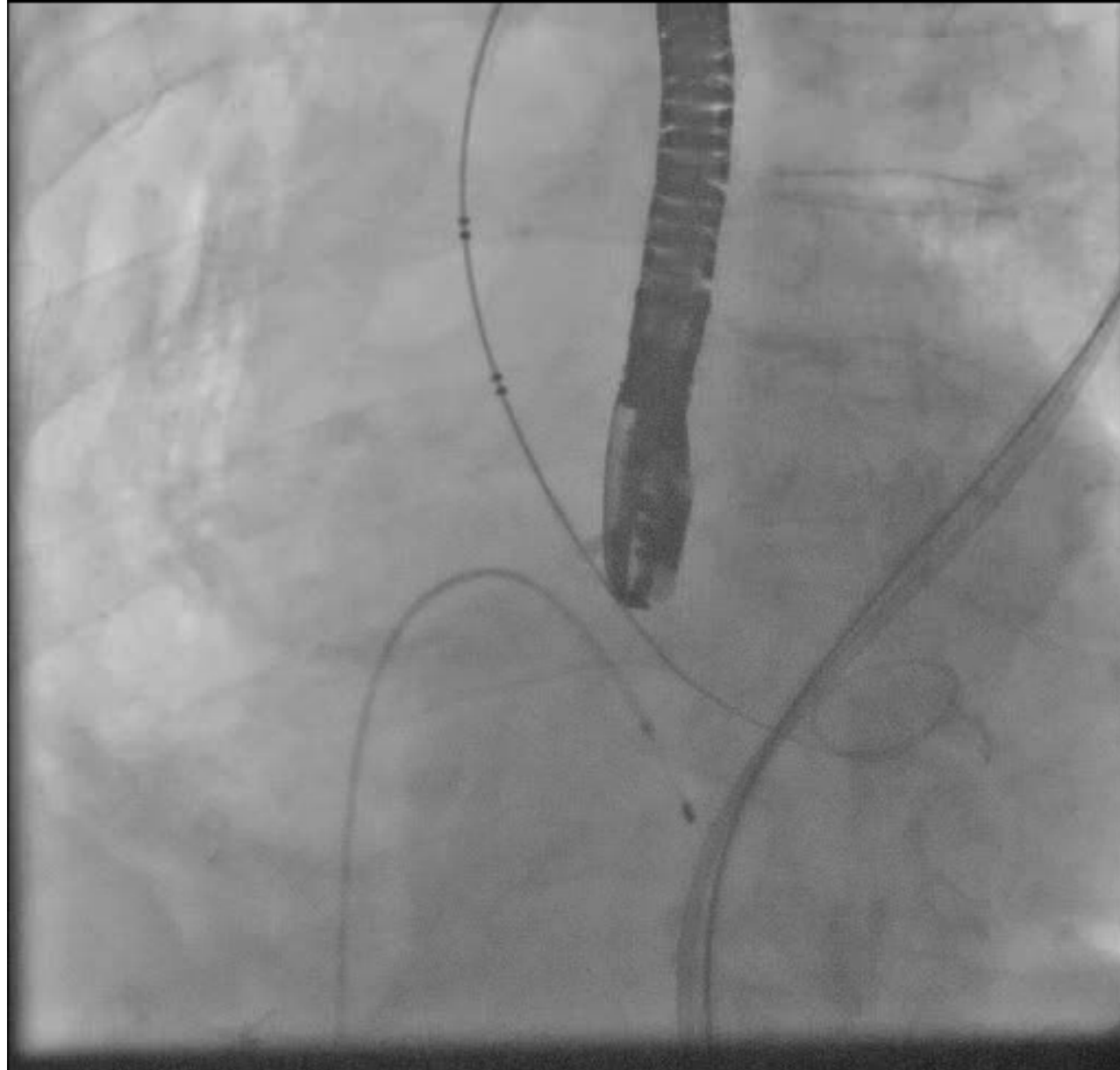
Lossy compression - not intended for diagnosis



Lossy compression - not intended for diagnosis



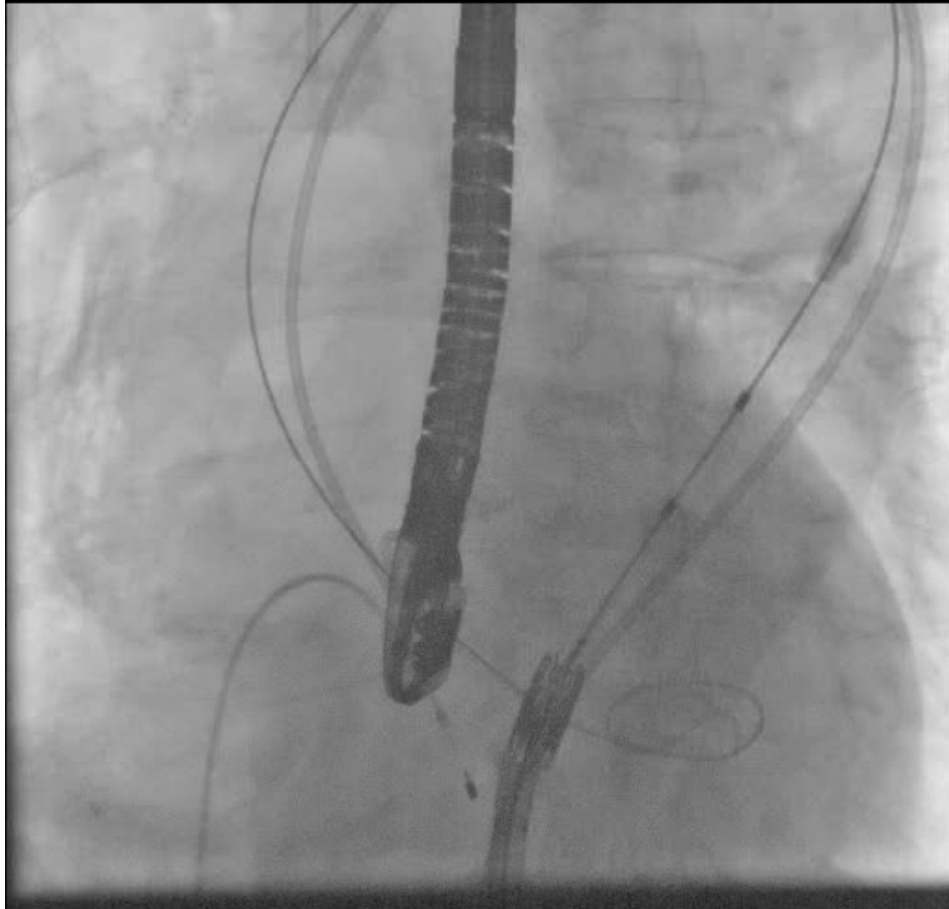
Lossy compression - not intended for diagnosis



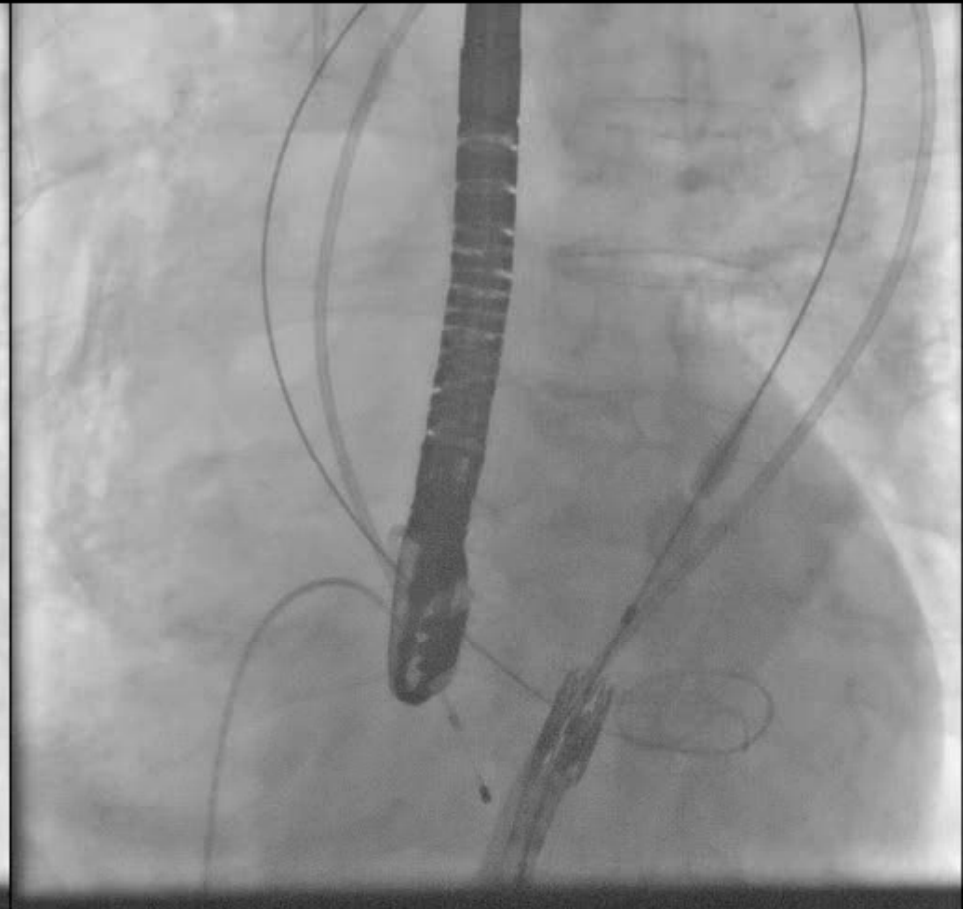
Lossy compression - not intended for diagnosis



Lossy compression - not intended for diagnosis



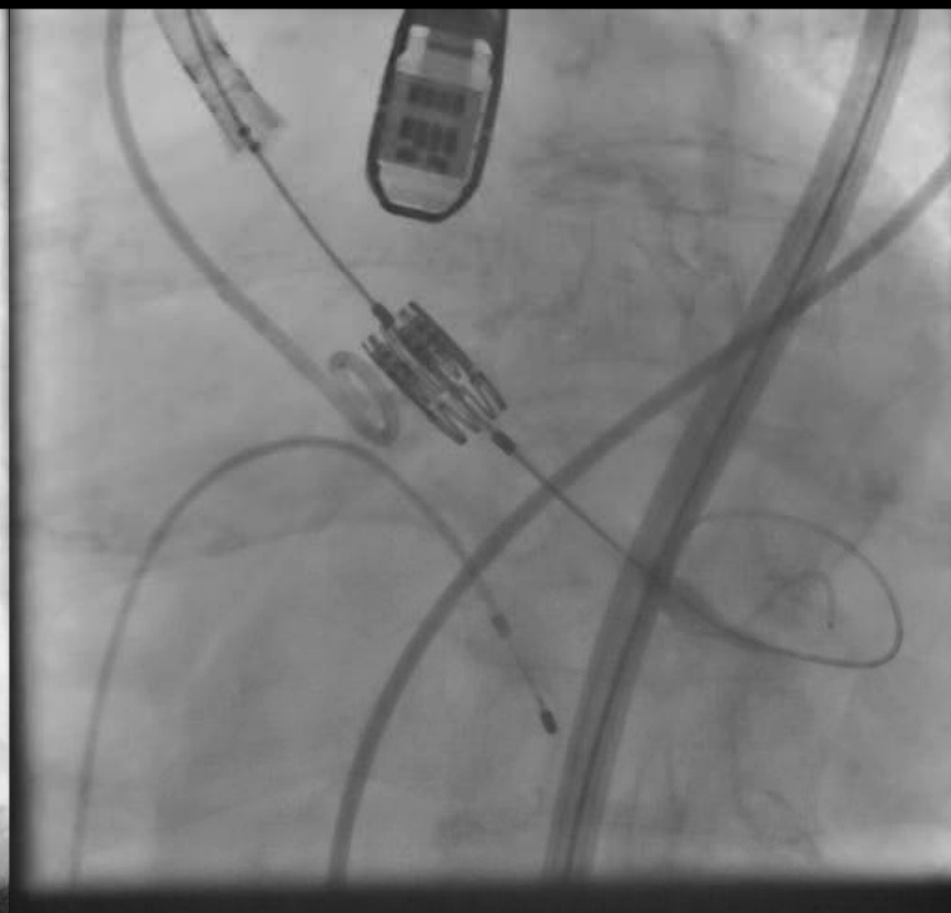
Lossy compression - not intended for diagnosis



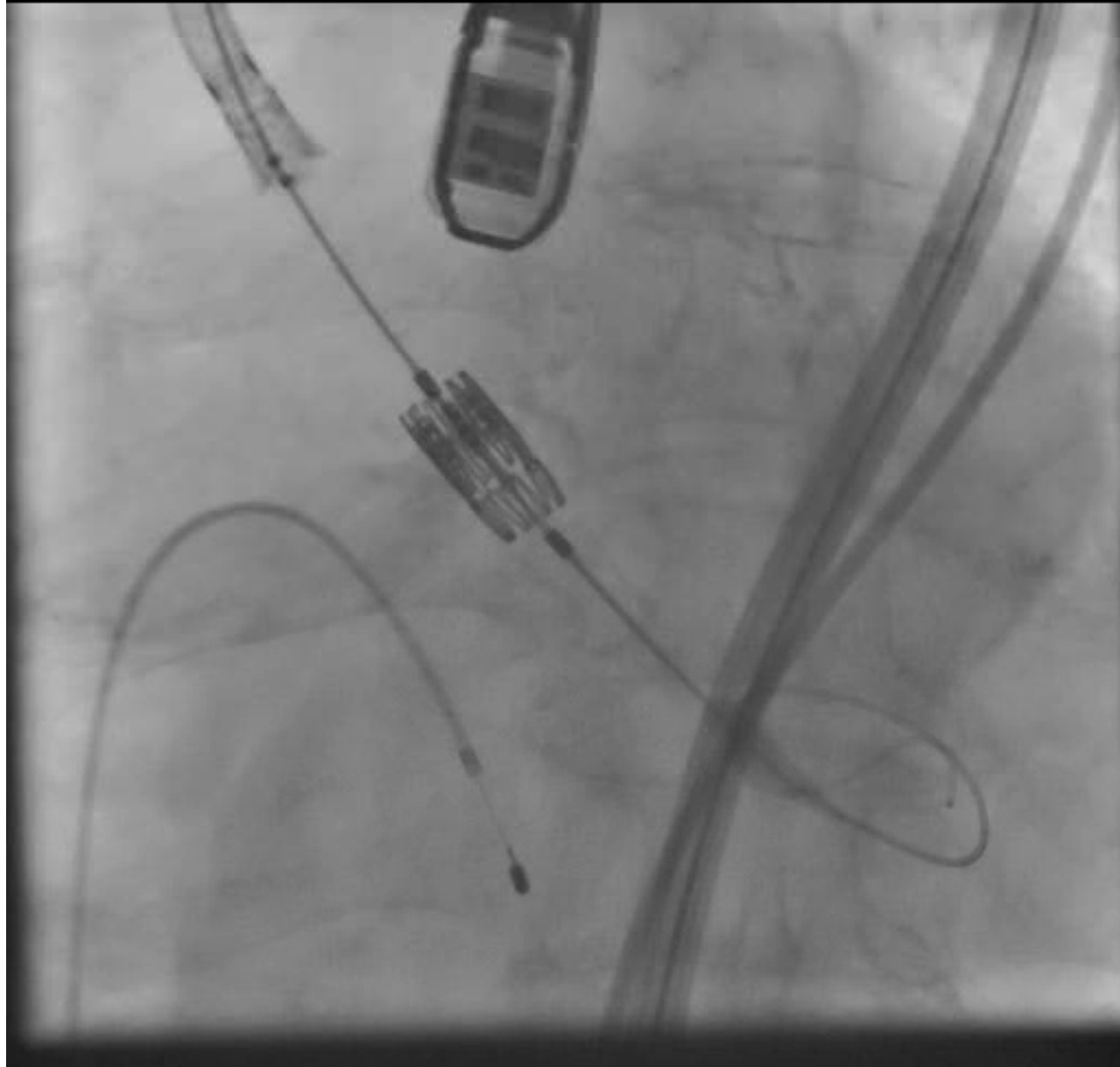
Lossy compression - not intended for diagnosis



Lossy compression - not intended for diagnosis

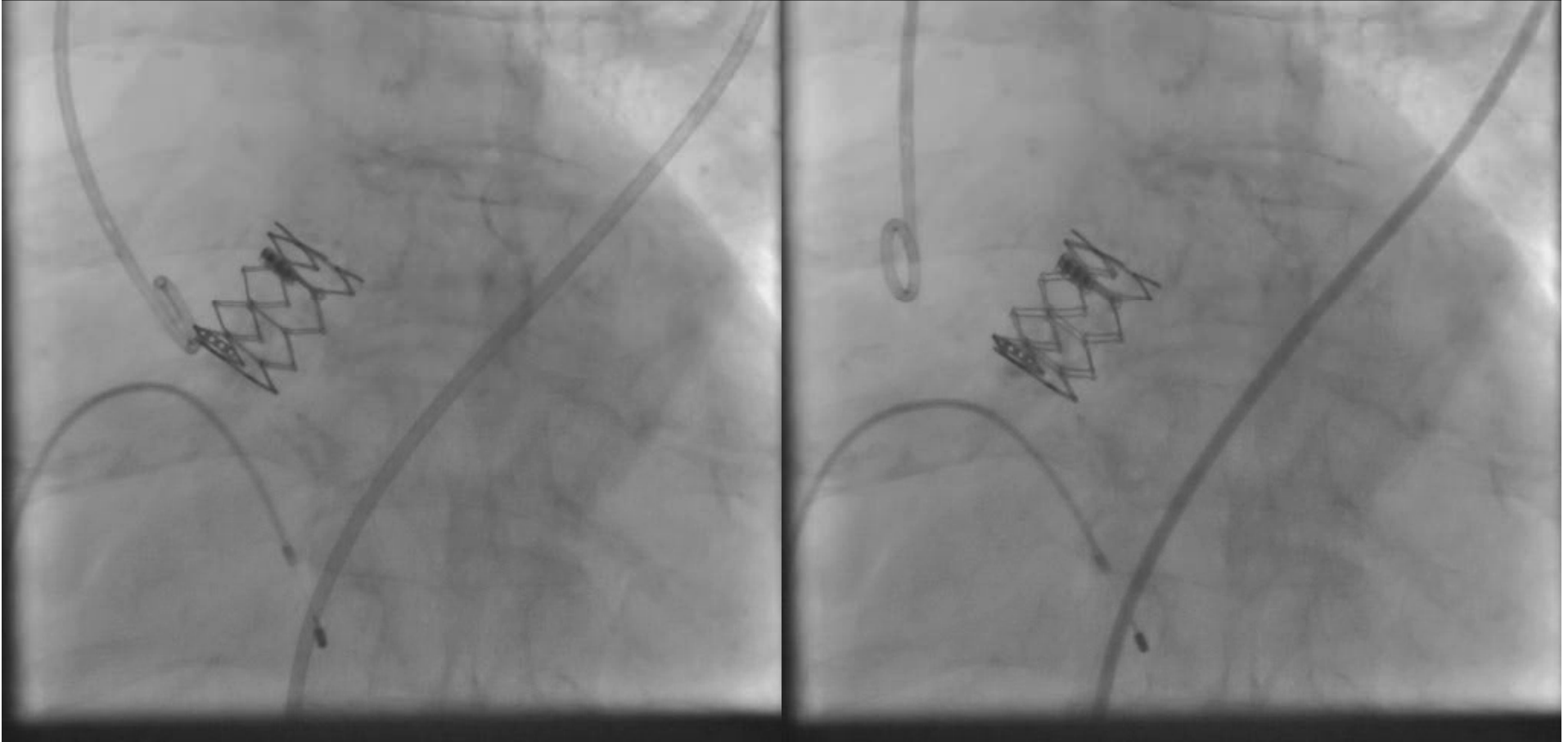


Lossy compression - not intended for diagnosis



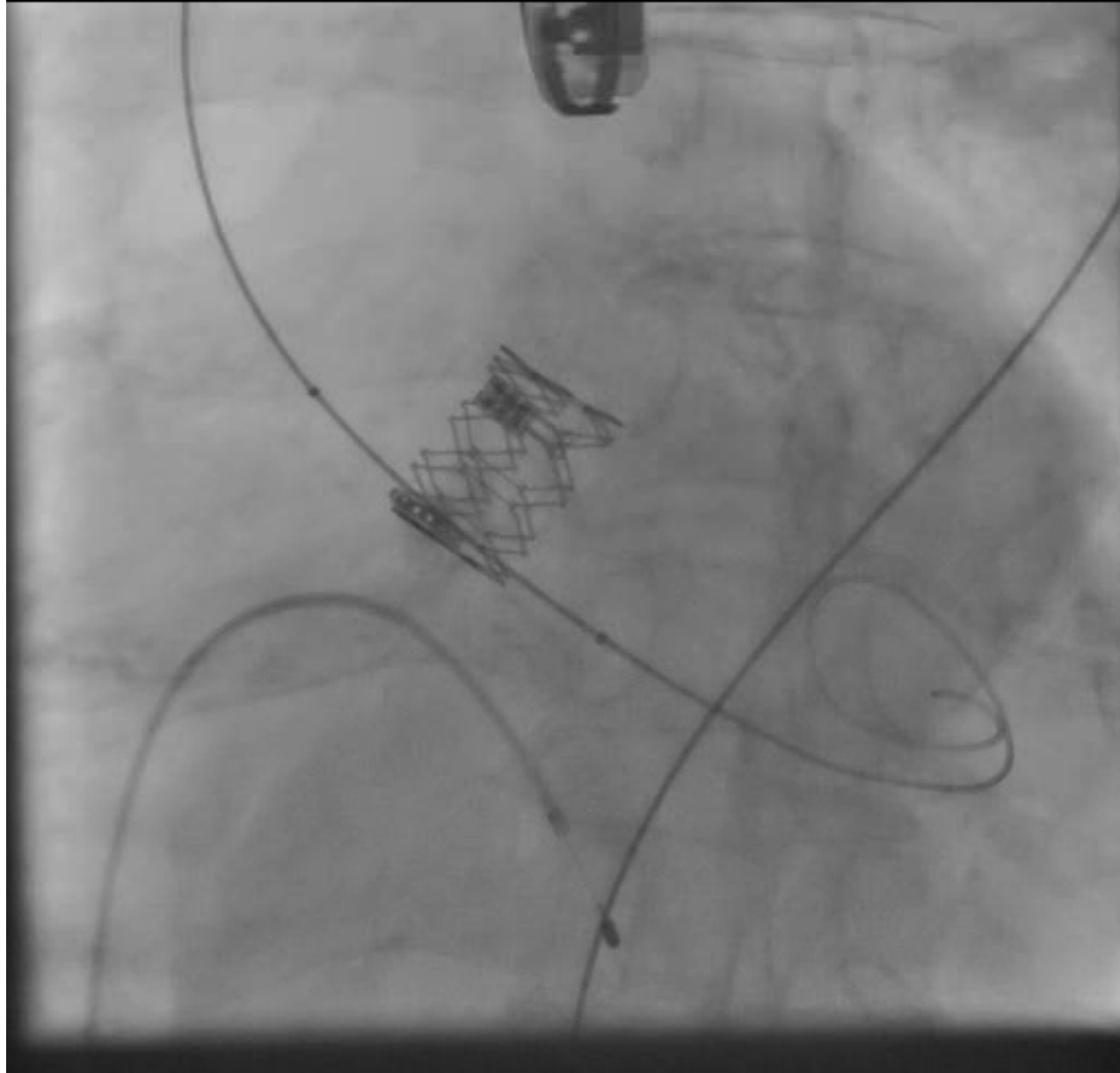
Lossy compression - not intended for diagnosis

Lossy compression - not intended for diagnosis



BP had to be supported with increasing inotropes
Diastolic BP ~ 40mmHg
LVEDP 20 → 25mmHg

Lossy compression - not intended for diagnosis



Post-dilated with a 25mm balloon

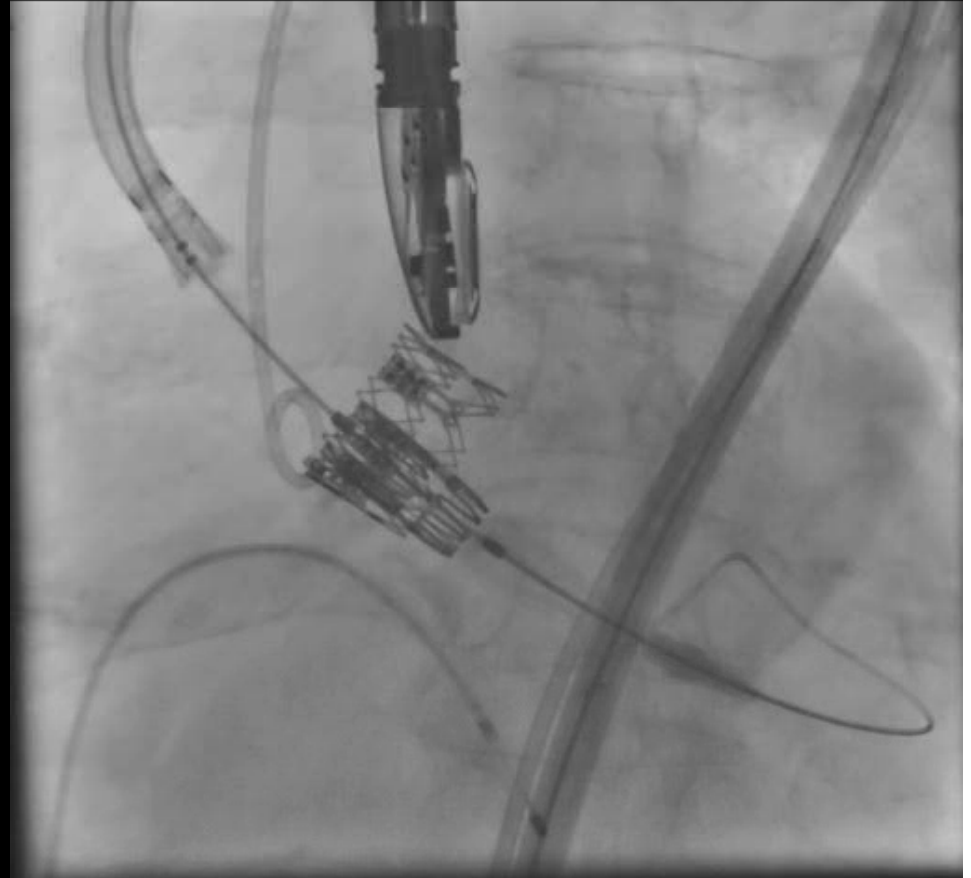
Lossy compression - not intended for diagnosis



Lossy compression - not intended for diagnosis

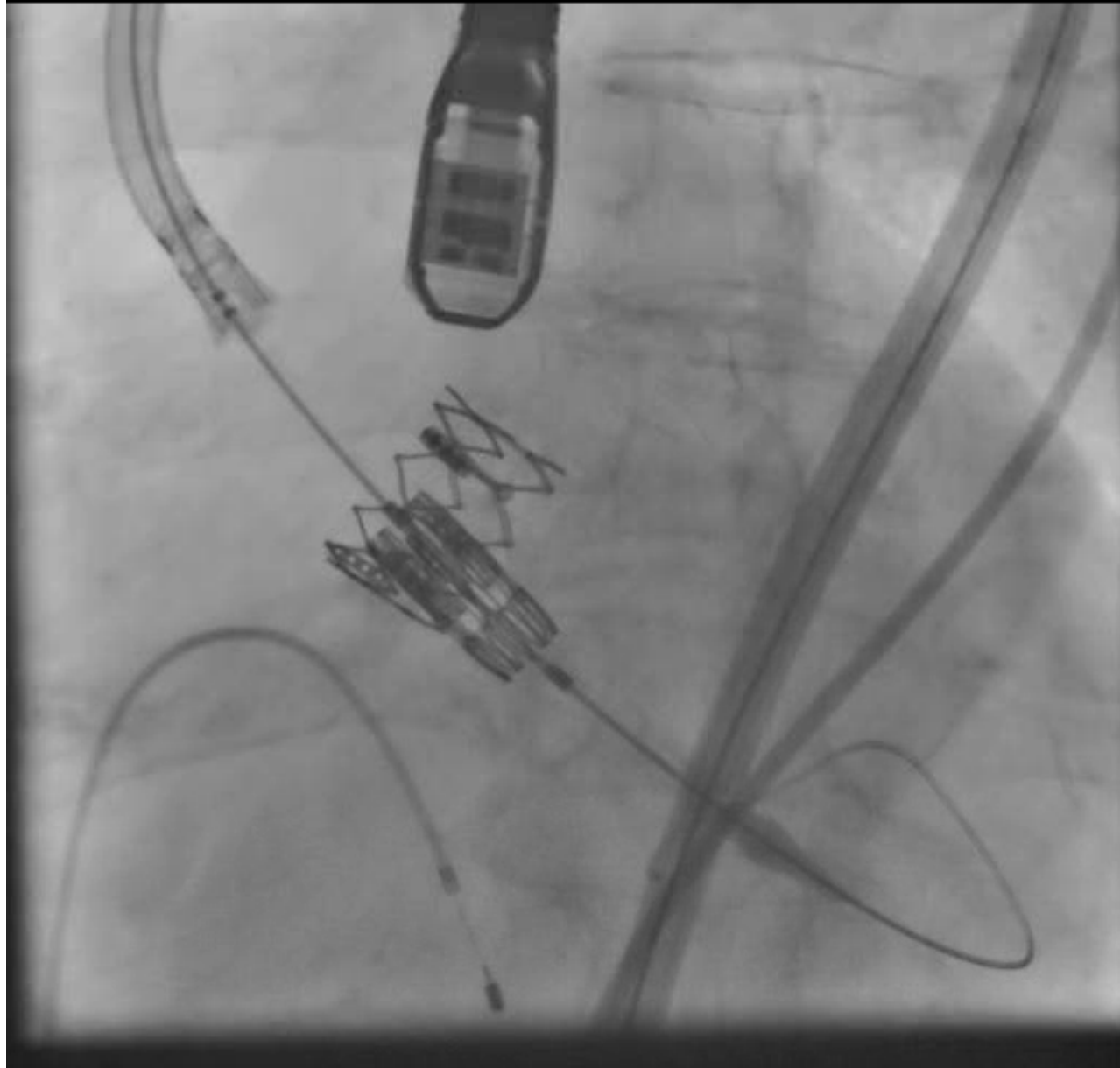


Lossy compression - not intended for diagnosis

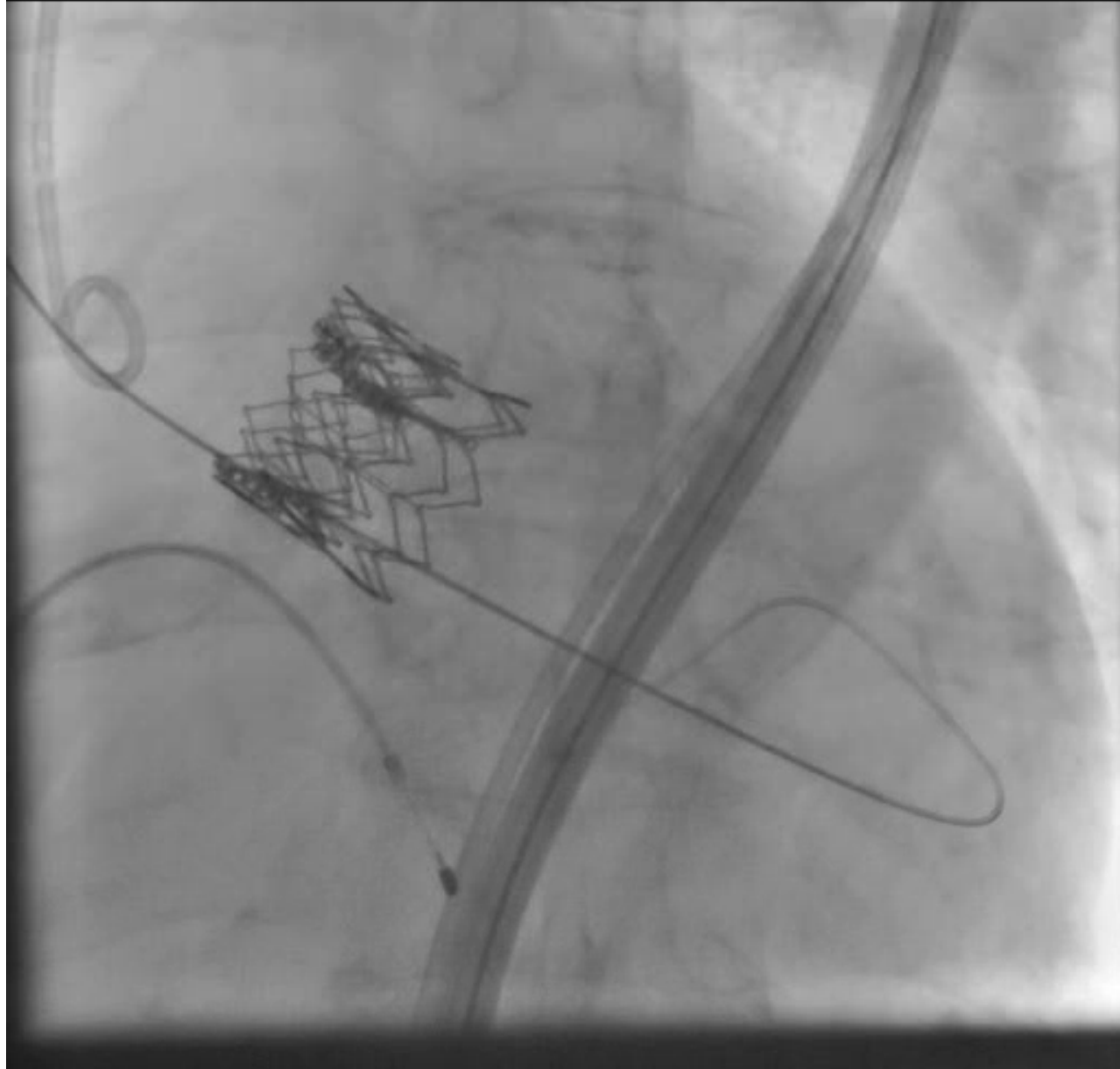


Decision made to implant a 2nd larger 26mm Sapien XT valve

Lossy compression - not intended for diagnosis



Lossy compression - not intended for diagnosis



Diastolic ~ 50mmHg, LVEDP = 20mmHg

Lossy compression - not intended for diagnosis



Lossy compression - not intended for diagnosis



- Patient doing well 1 year on
- NYHA II
- Echo:
- EF 52%, MPG 11mmHg, mild paravalvular leak