

# How to deal with a complex left main ?

Thierry Lefèvre and the ICPS Team

Women 86 years old

160 cm, 72 Kg

Diabetes, HBP

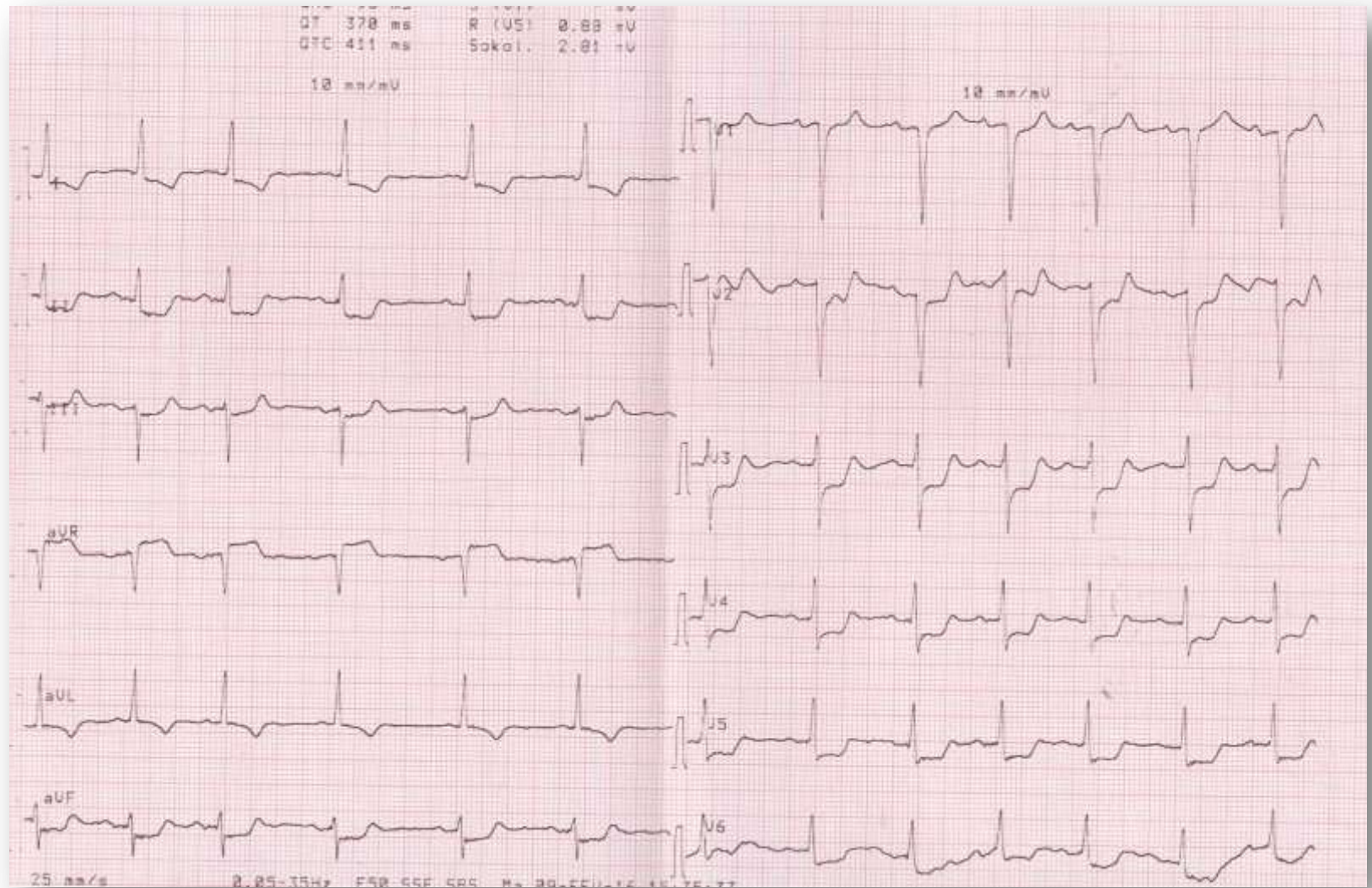
Moderate effort angina since 2 years

Recent accelerated angina

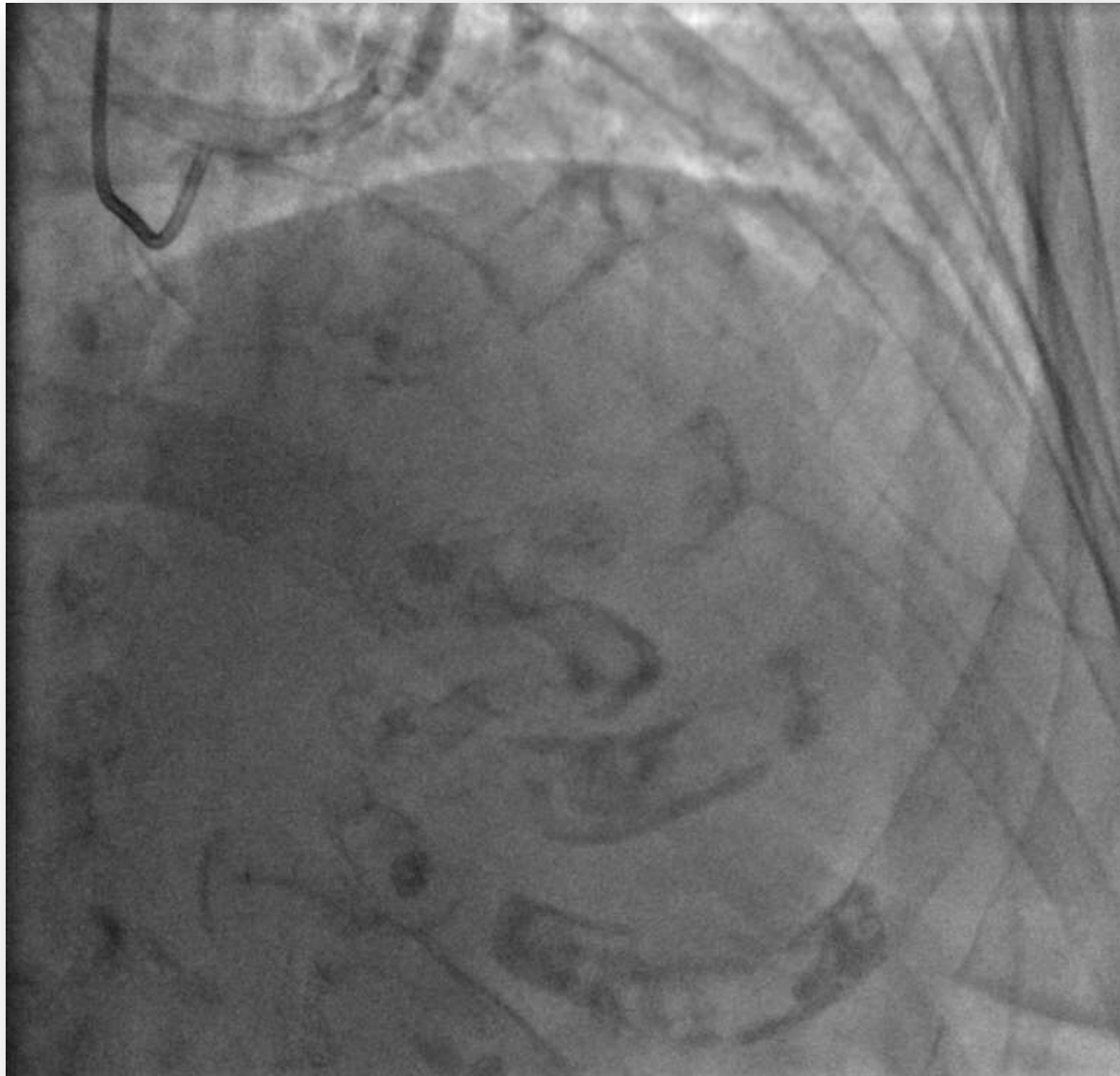
Prolonged chest pain 30 minutes

Troponin elevation

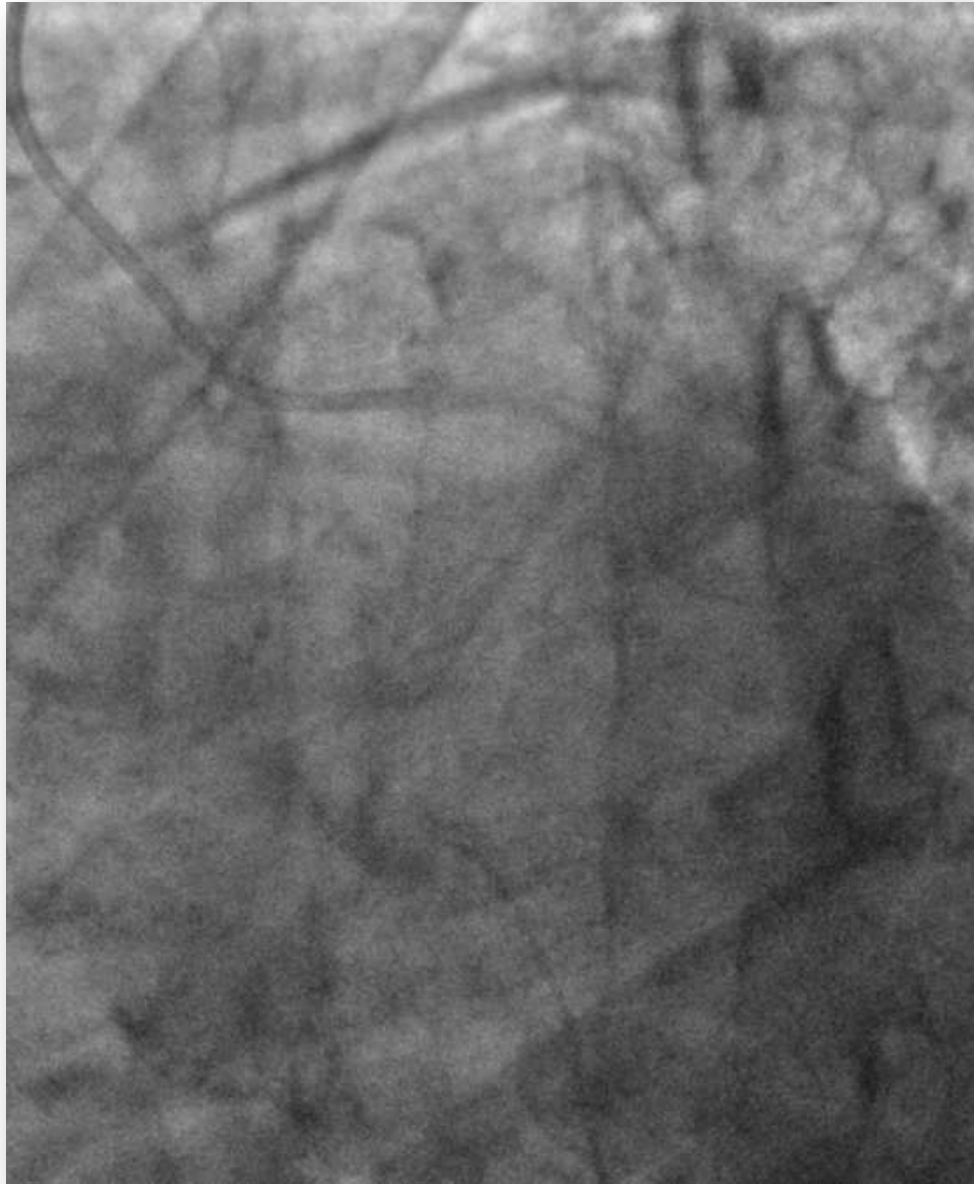
Creatinin Clairance 35ml/min.

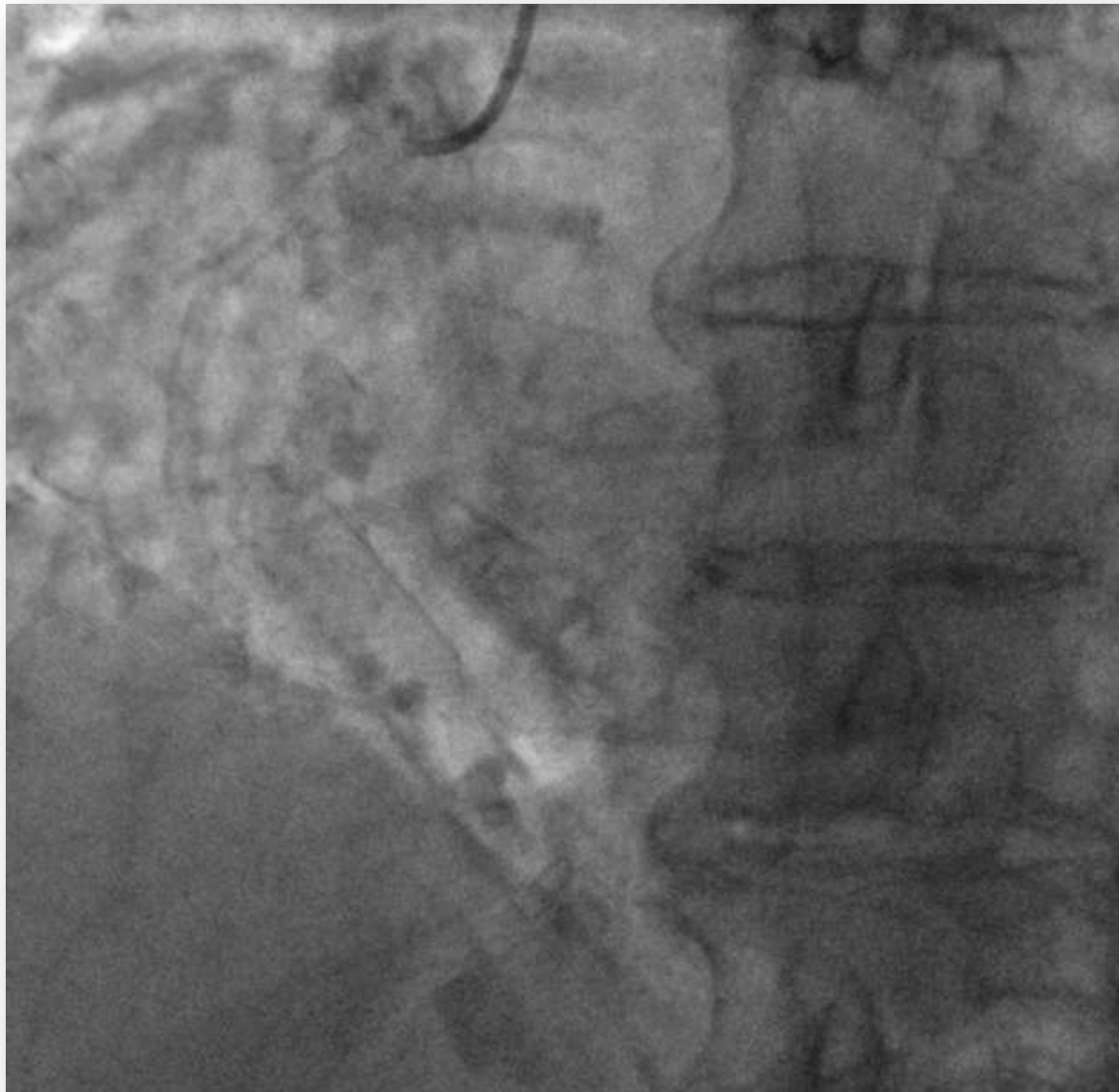


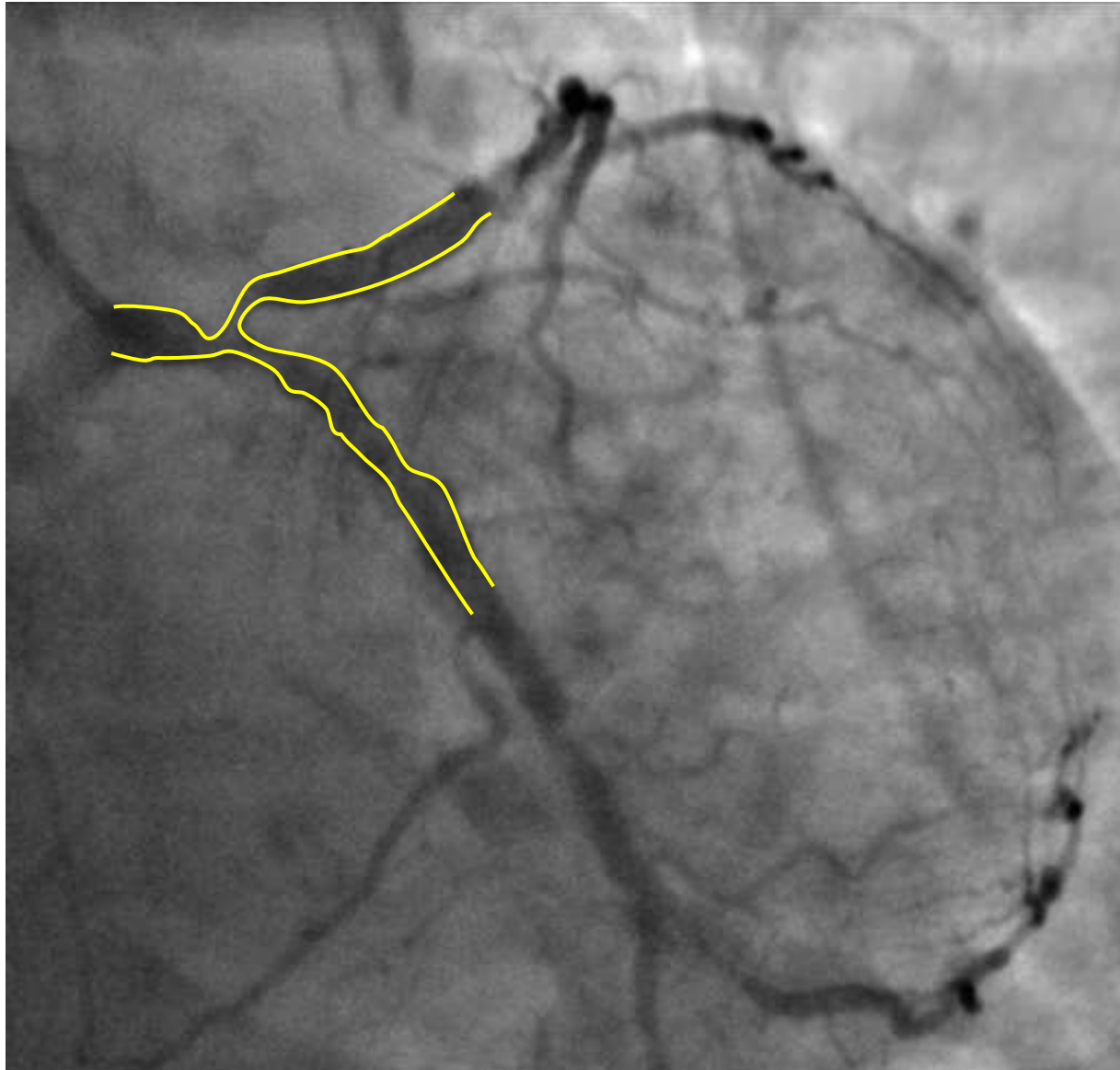




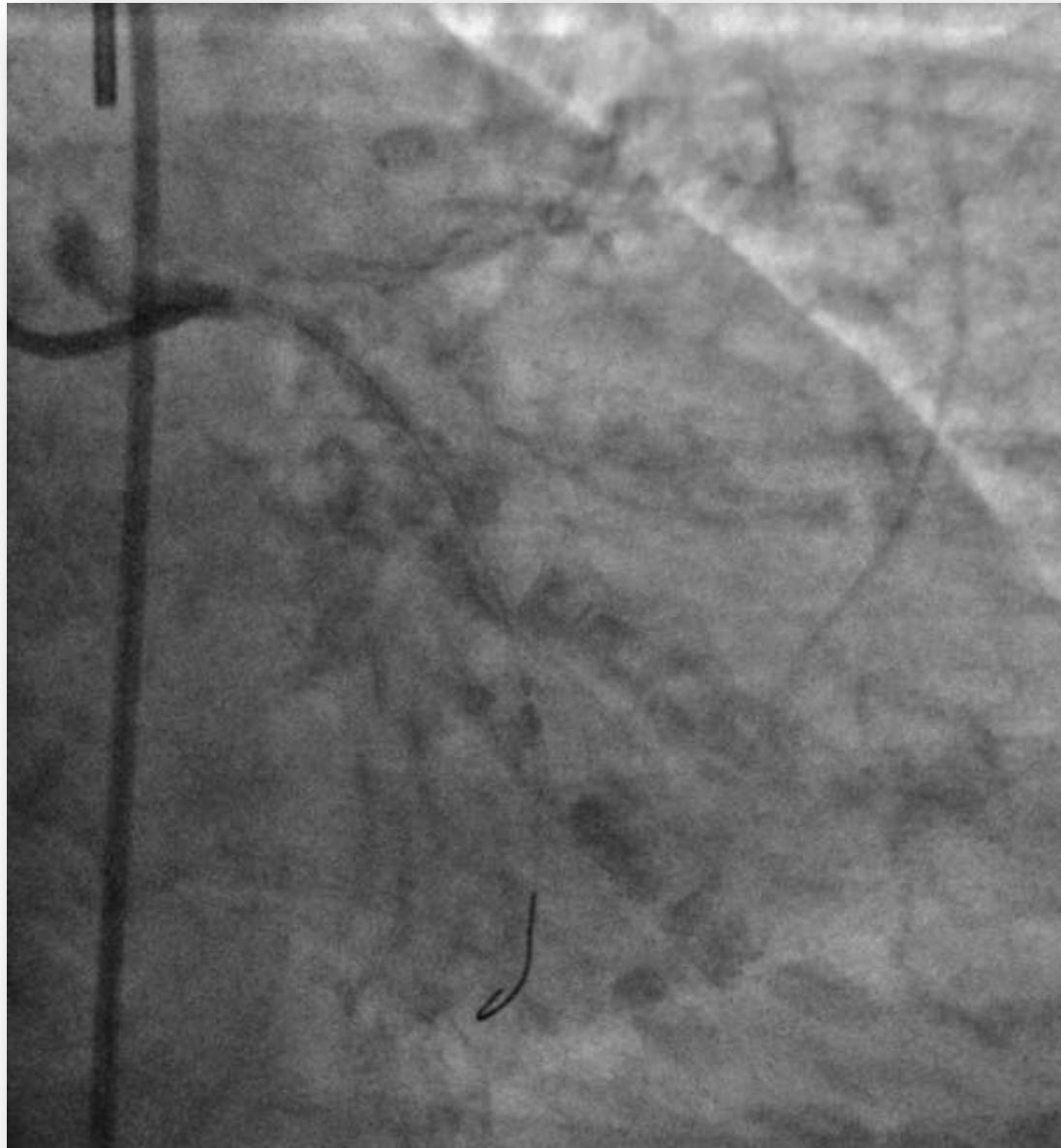


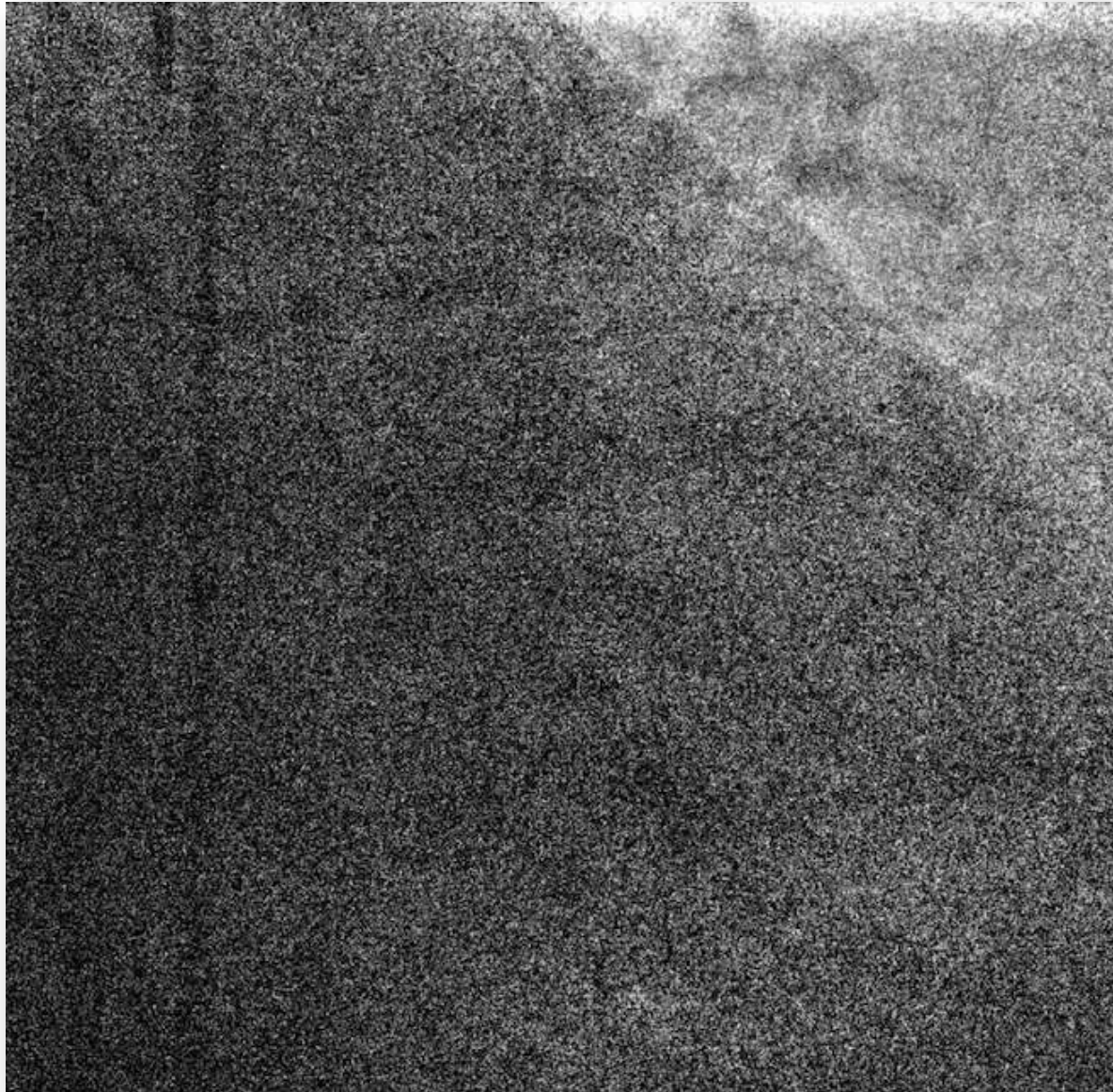








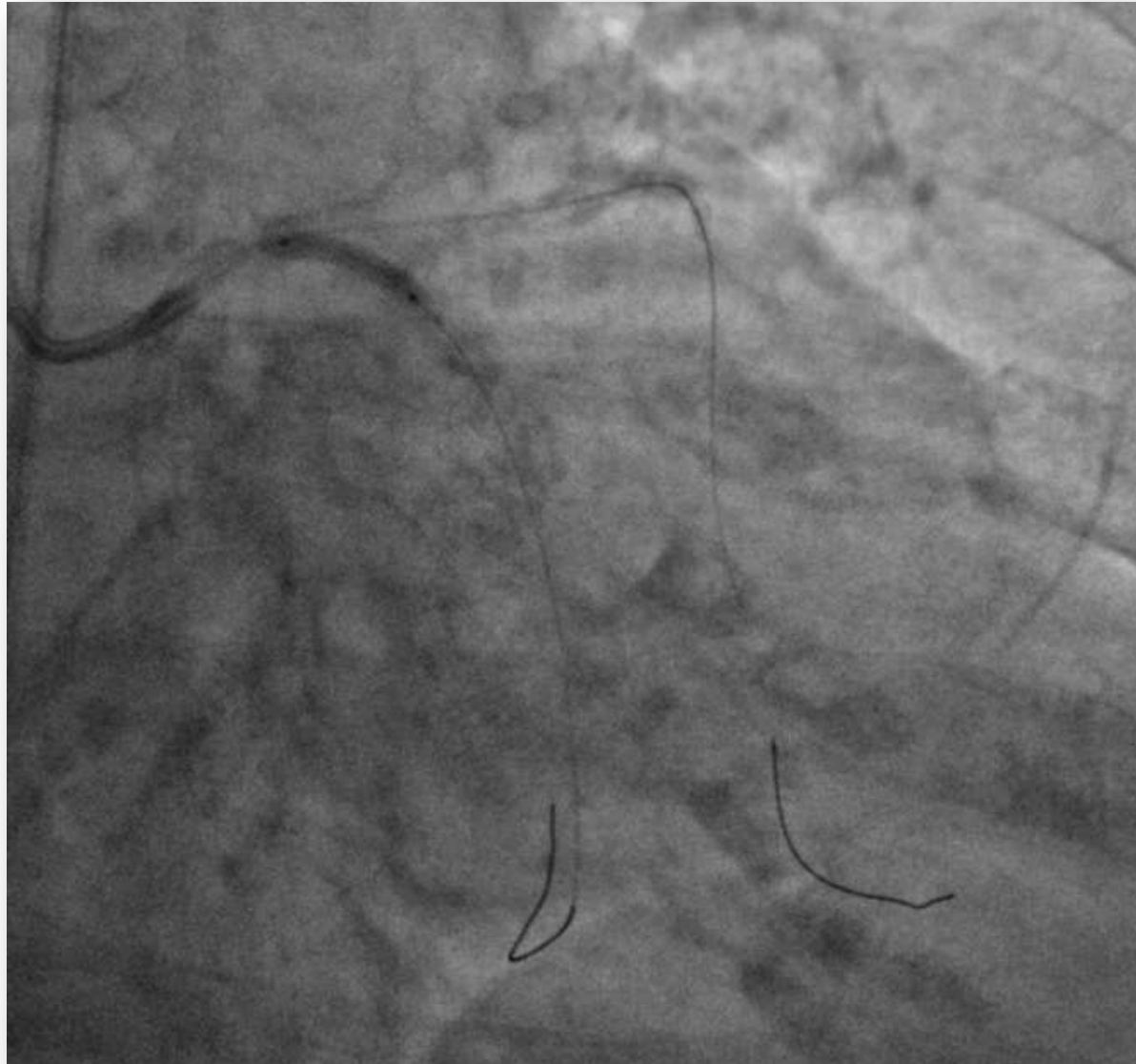






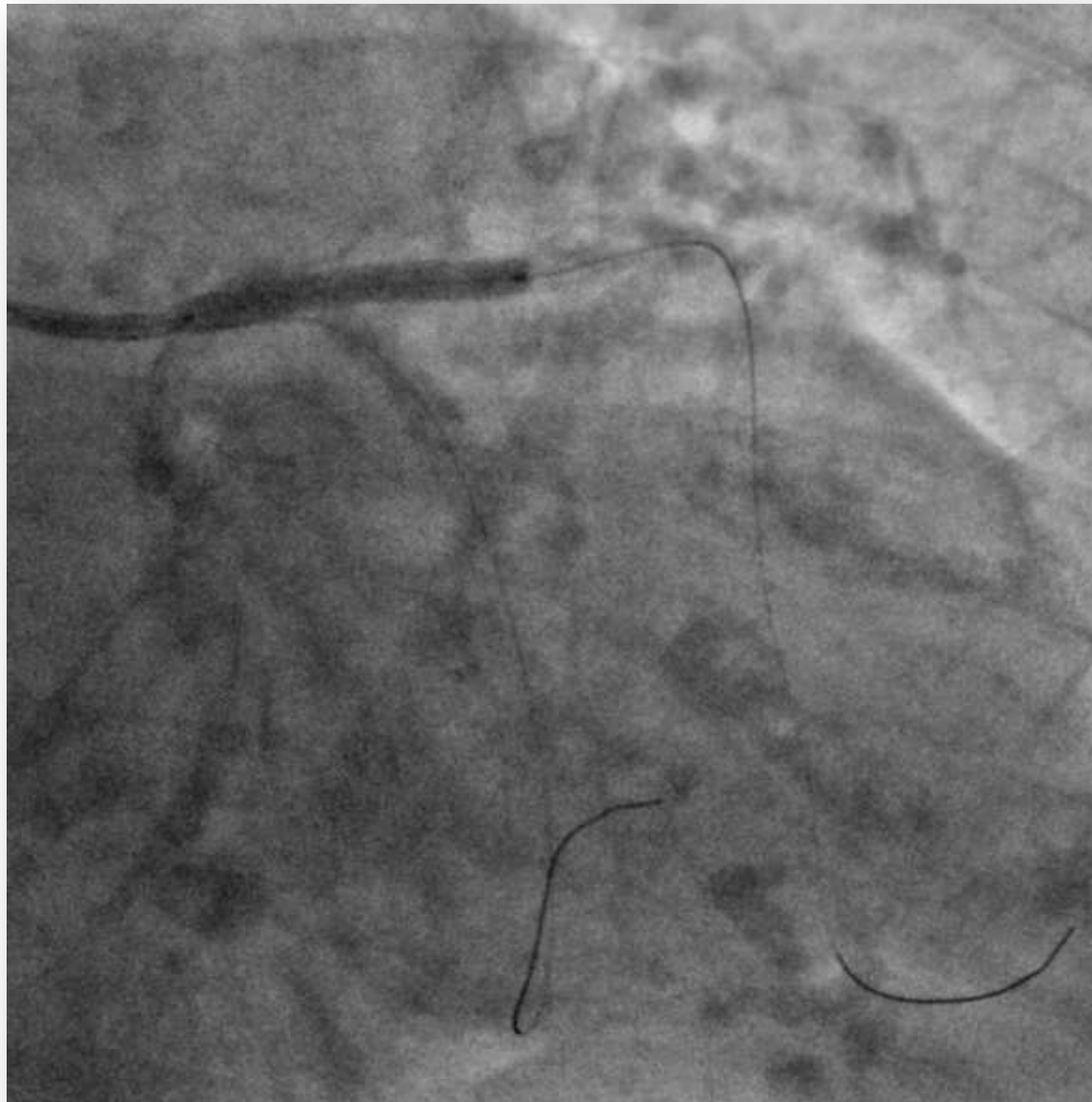




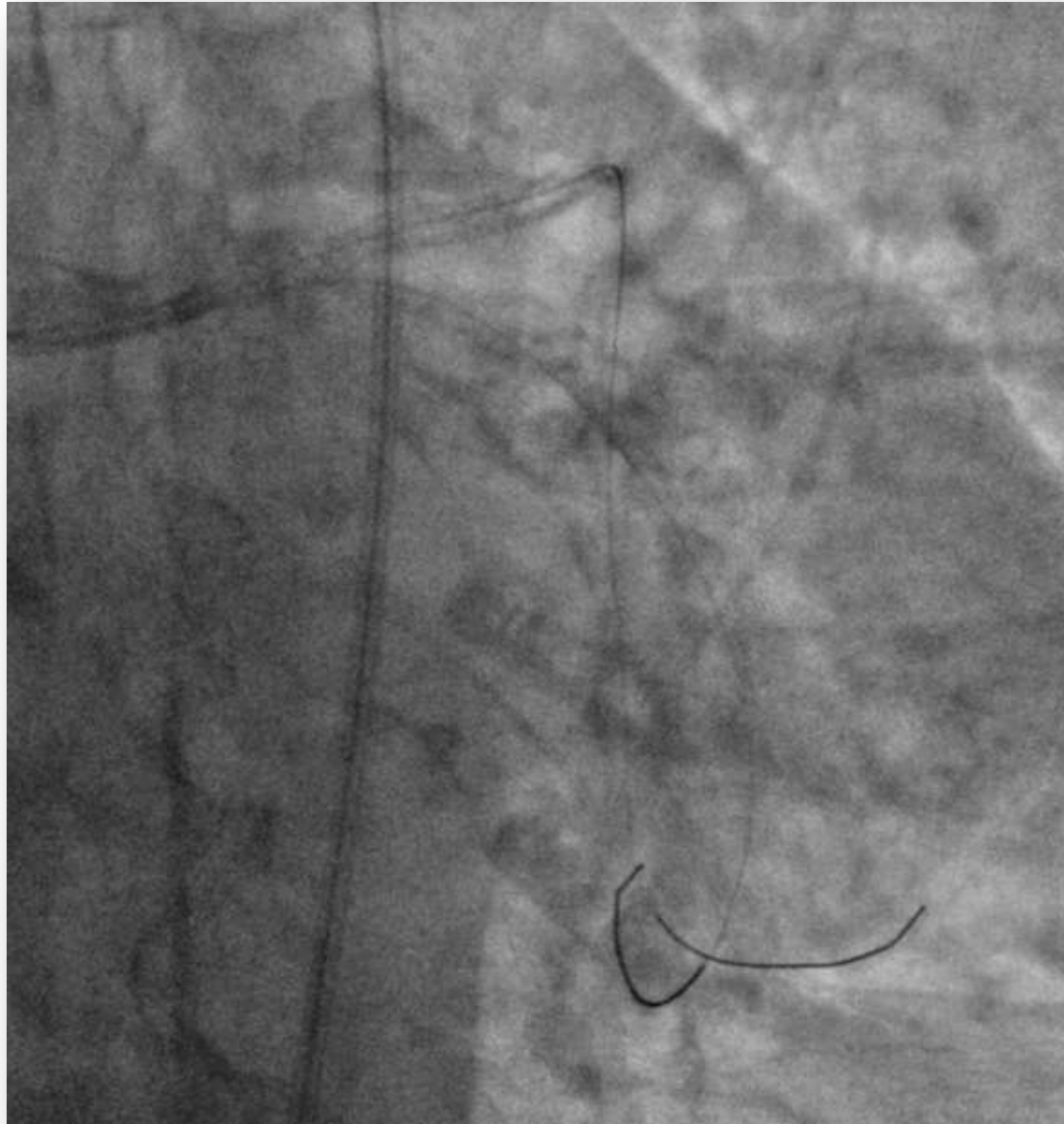




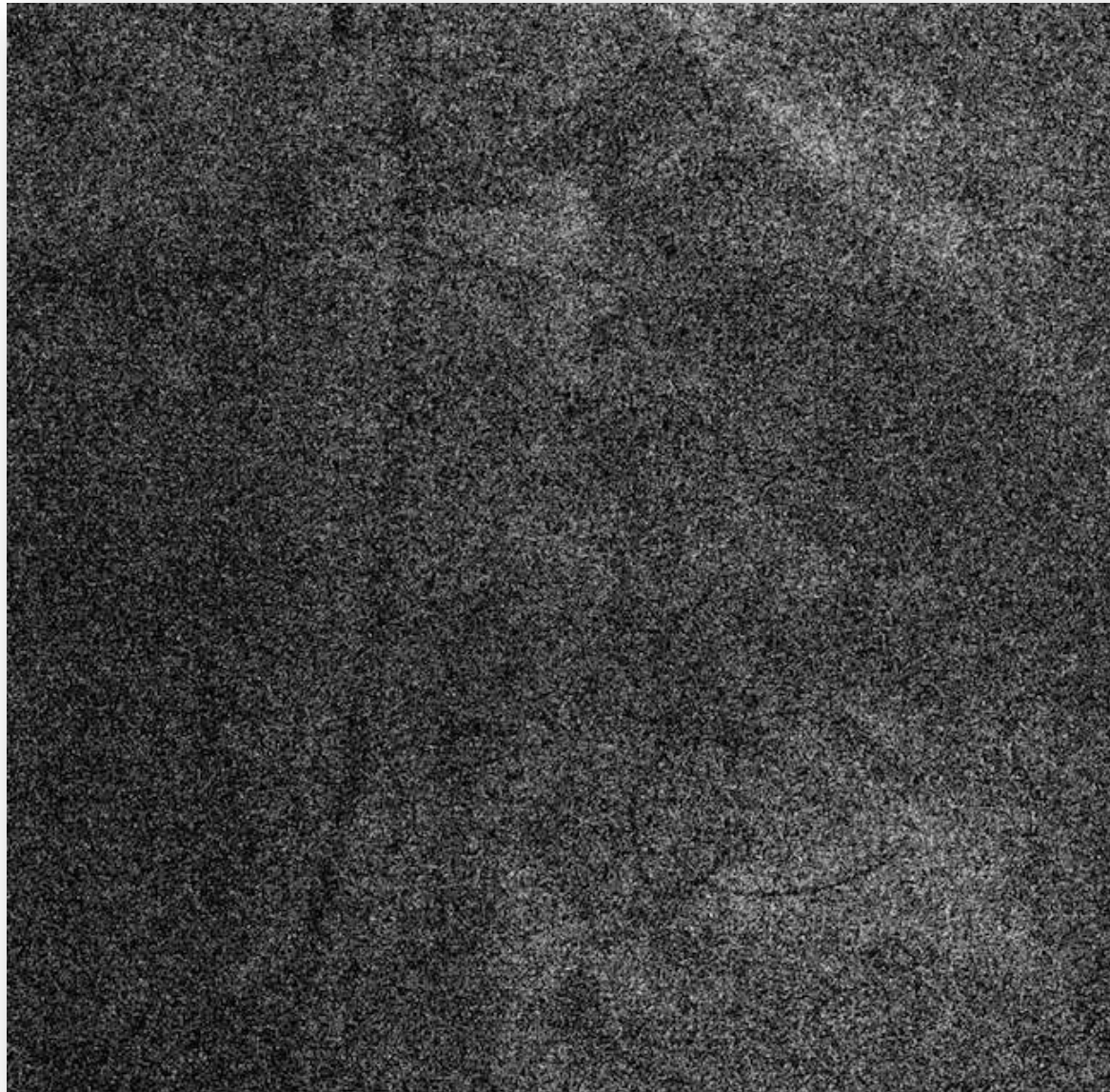




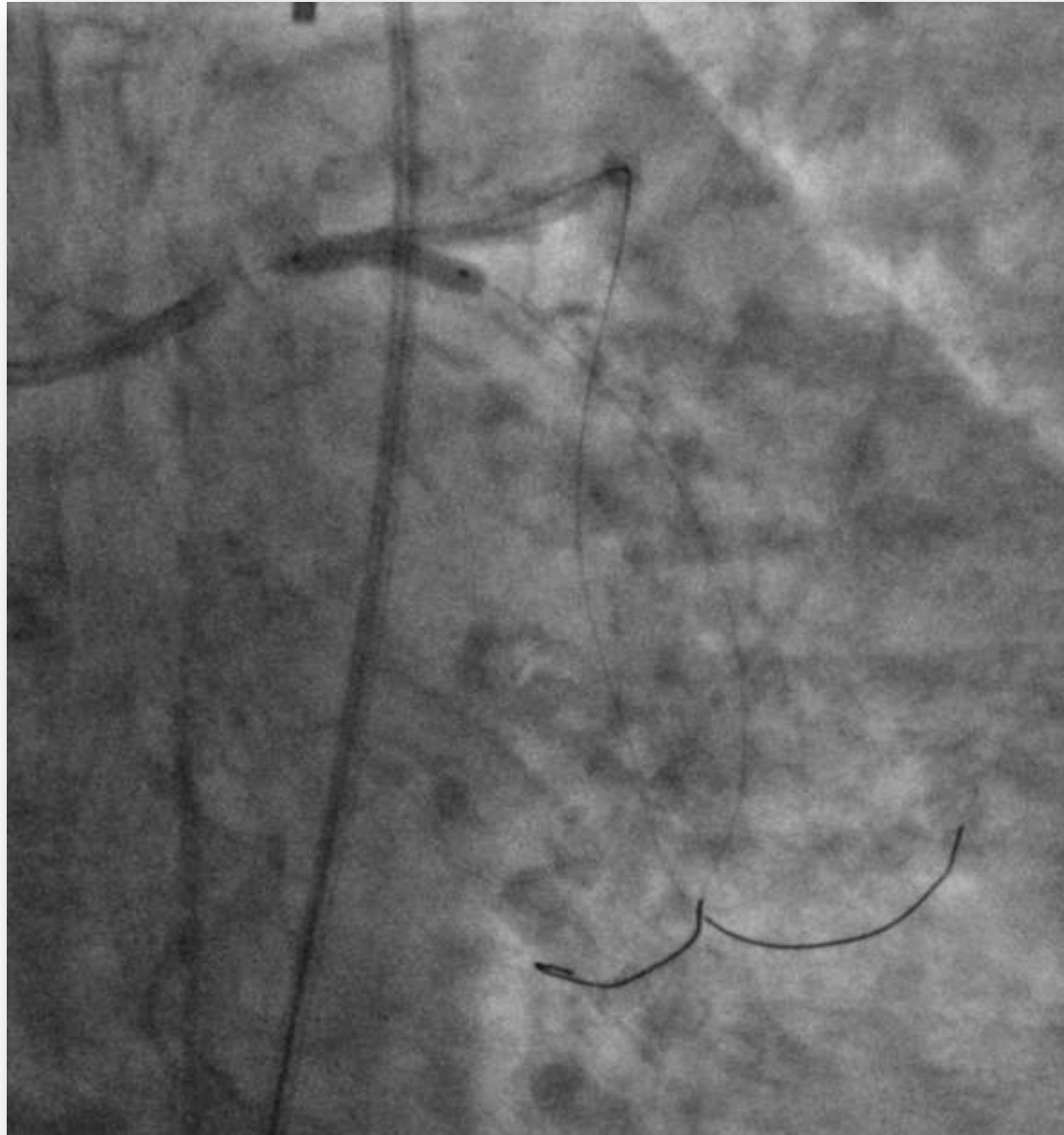


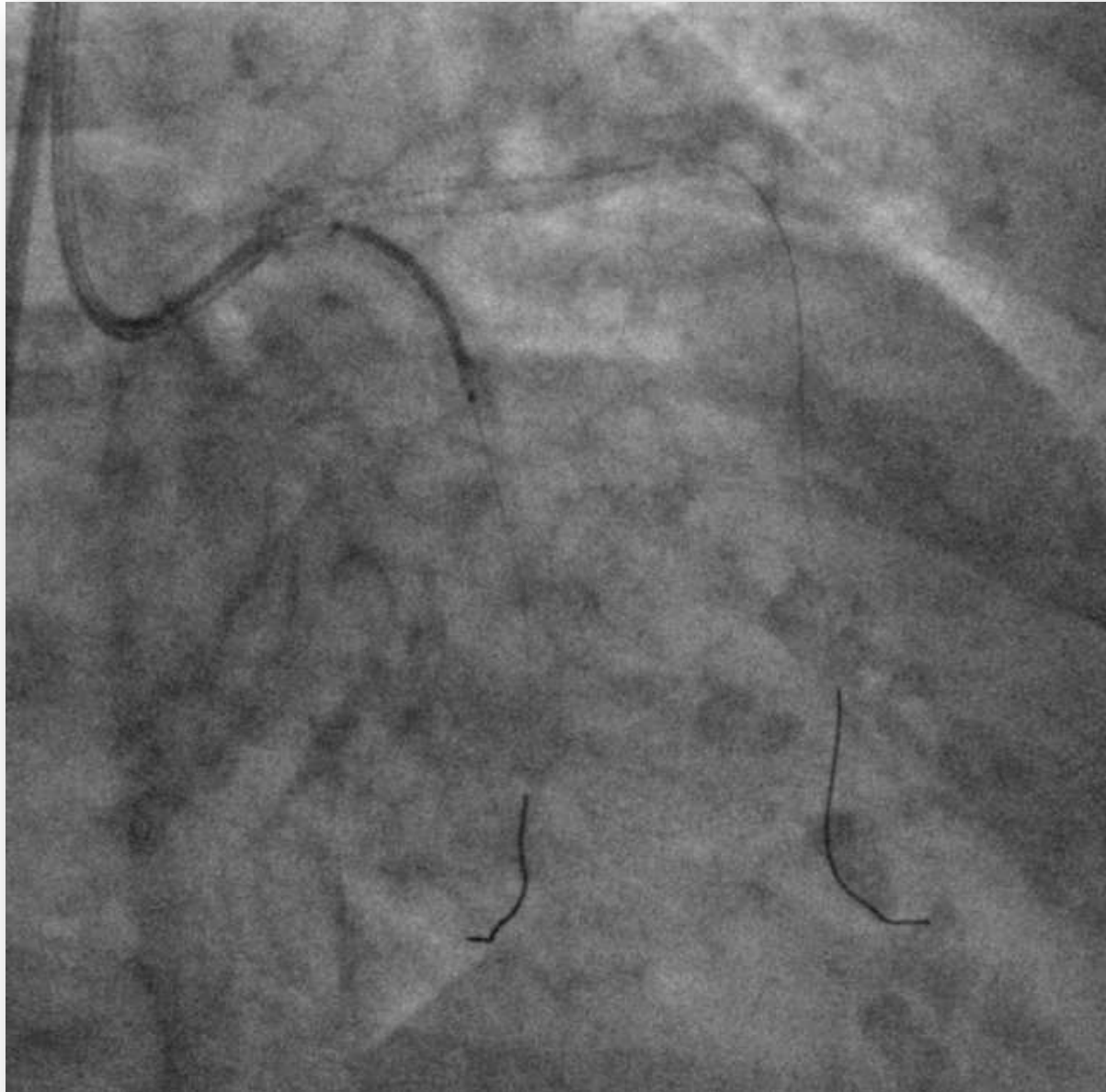




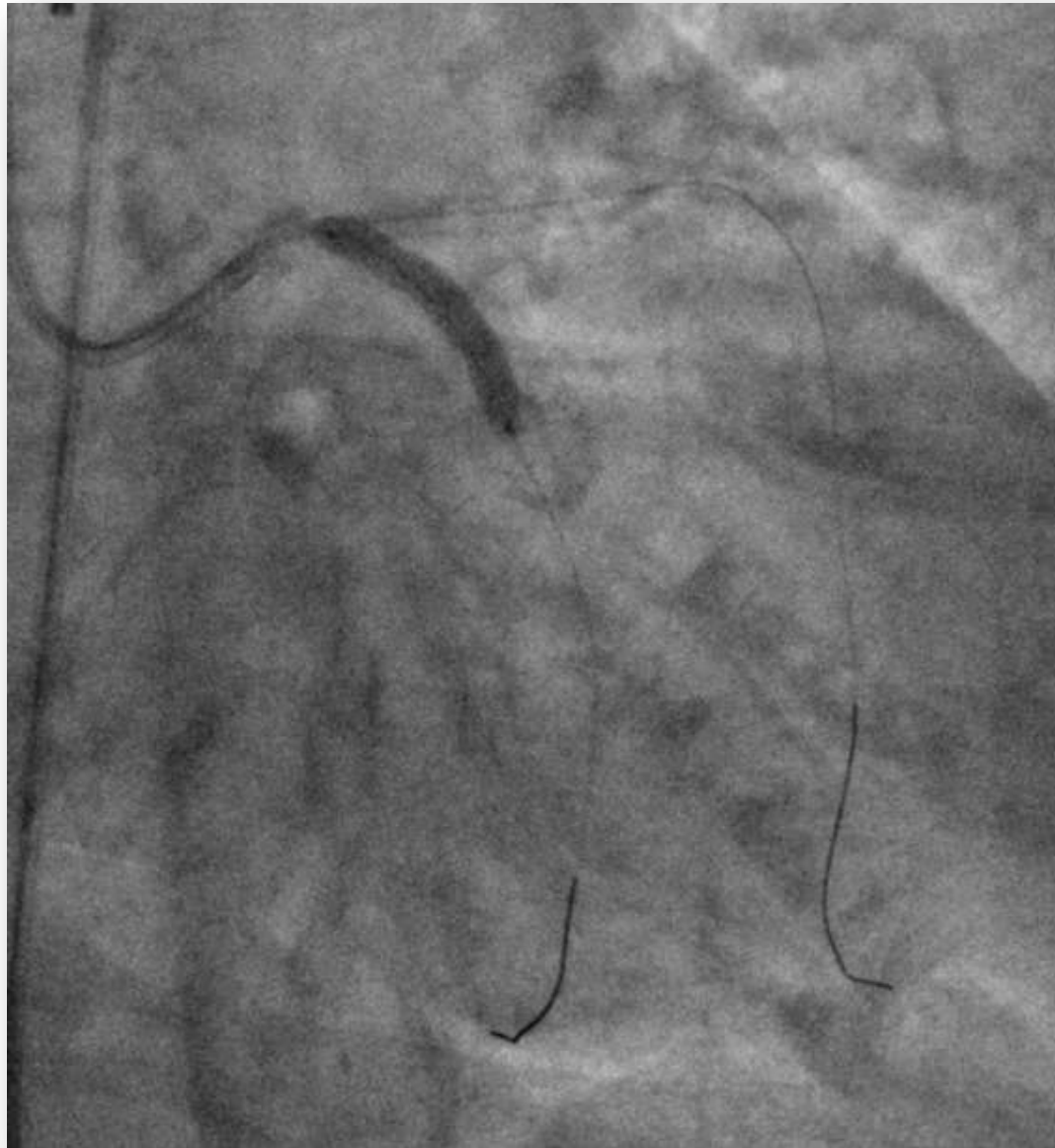






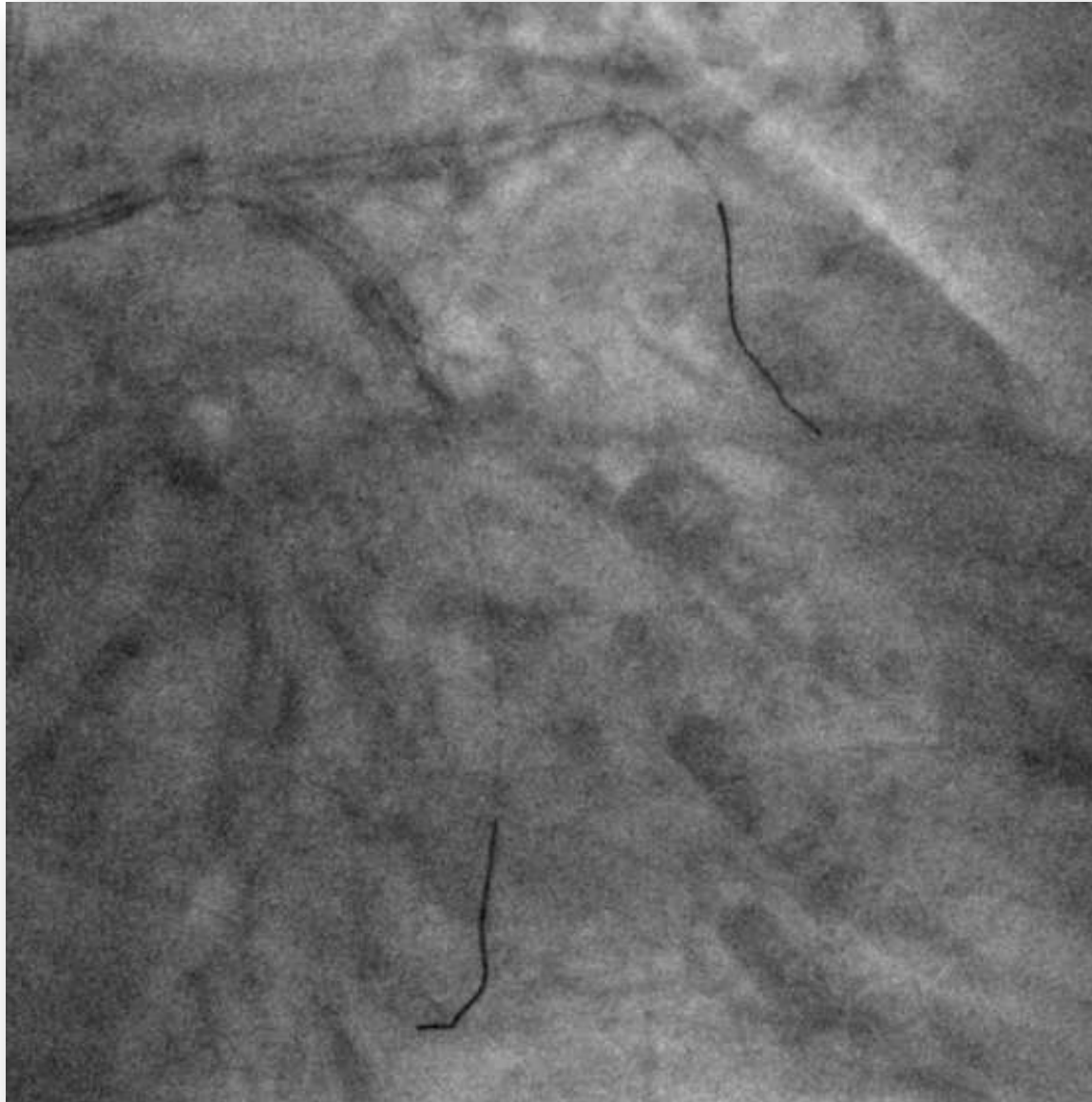


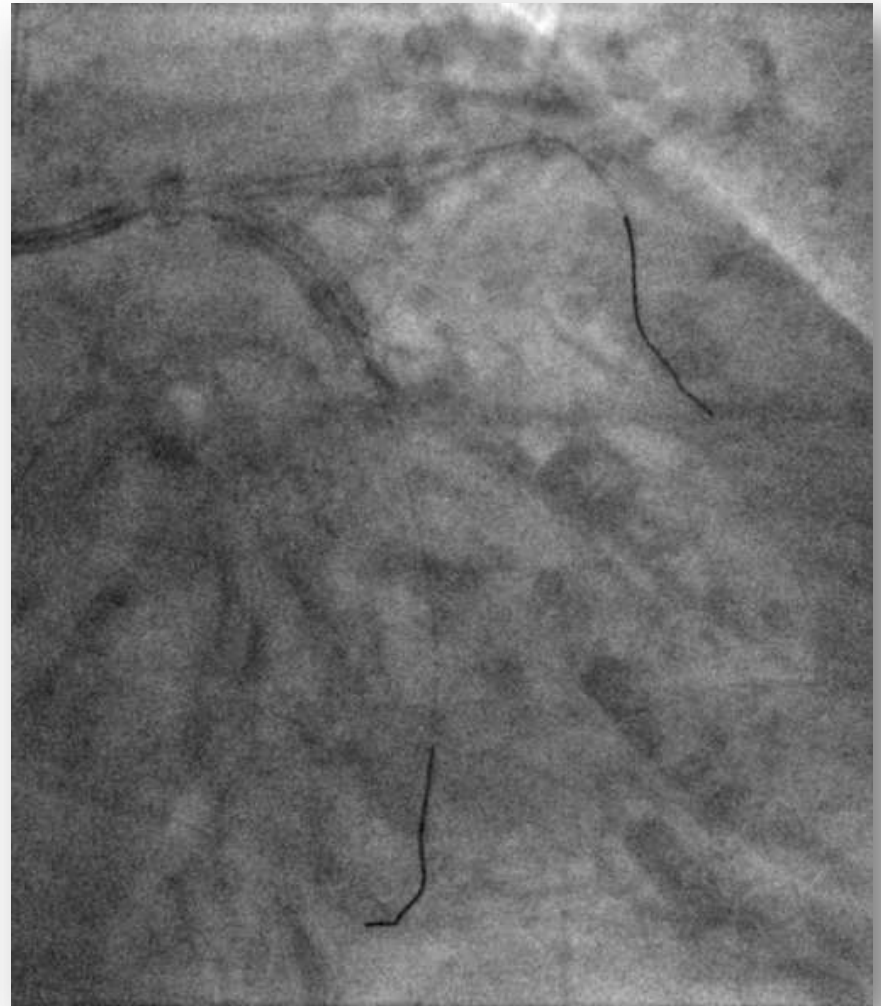
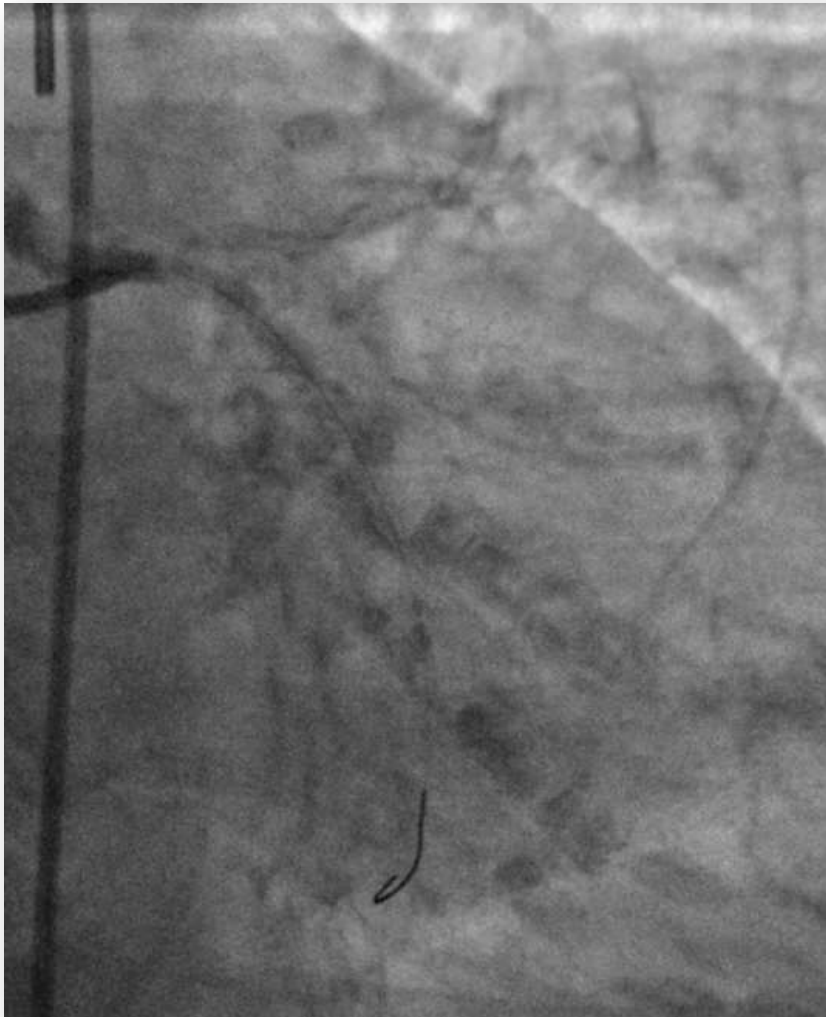












# Procedure

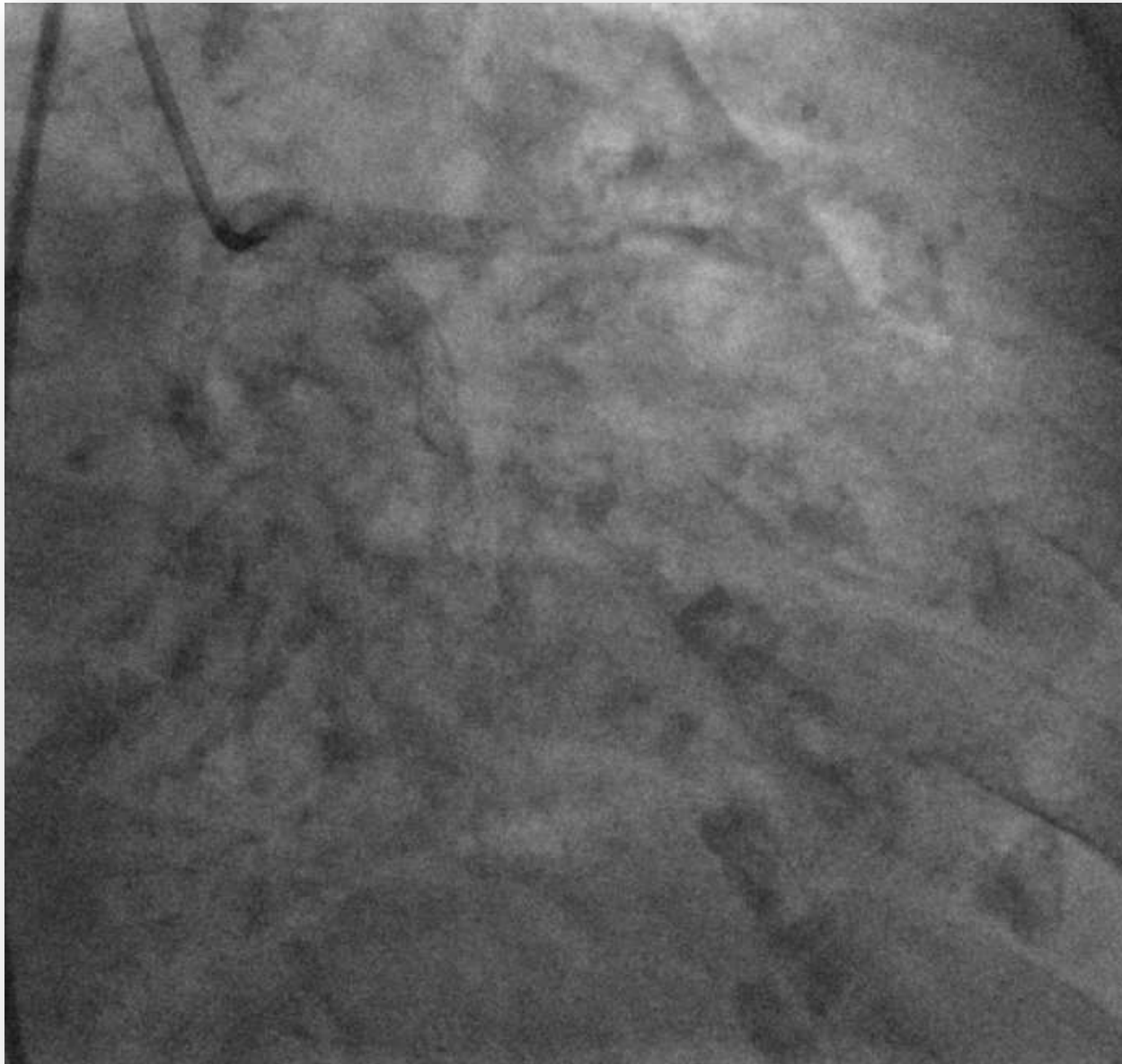
Procedural time 74 minutes

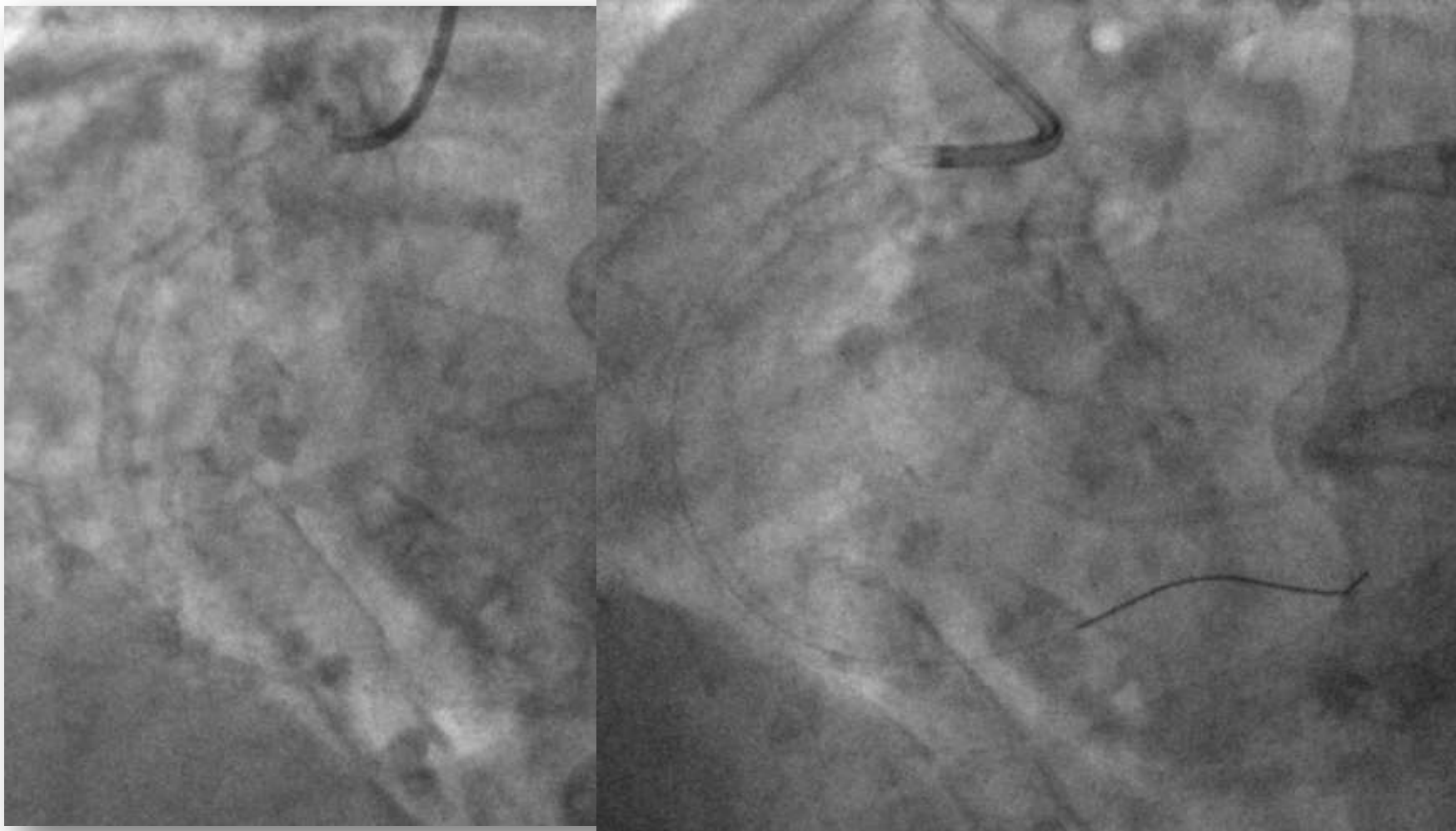
Contrast media 137 cc

X ray exposure 0.8 gray

Discharged 2 days later

RCA PCI planned 3 weeks later







# Conclusion

Complex left main PCI can be done safely by following simple rules:

Respect the fractal anatomy

Have at least a plan A and B

Stent first the most difficult access

Use the POT technique

Do a T when the Left main shape is T