



CoreWire Technology & Onyx cases sharing

Dr Lam Ho



What happen in our lab after changing to onyx?

Resolute Integrity
→ **Onyx**

Usage at least increased >20x

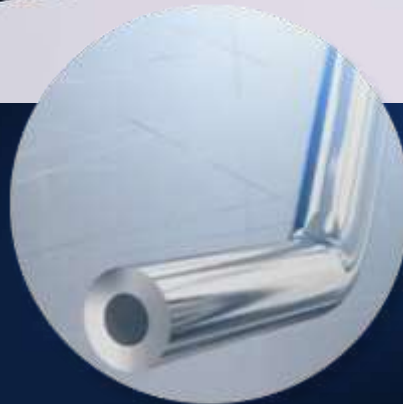


Onyx: CoreWire Technology



Thinner struts
Increased deliverability
Increased visibility
No compromise to strength

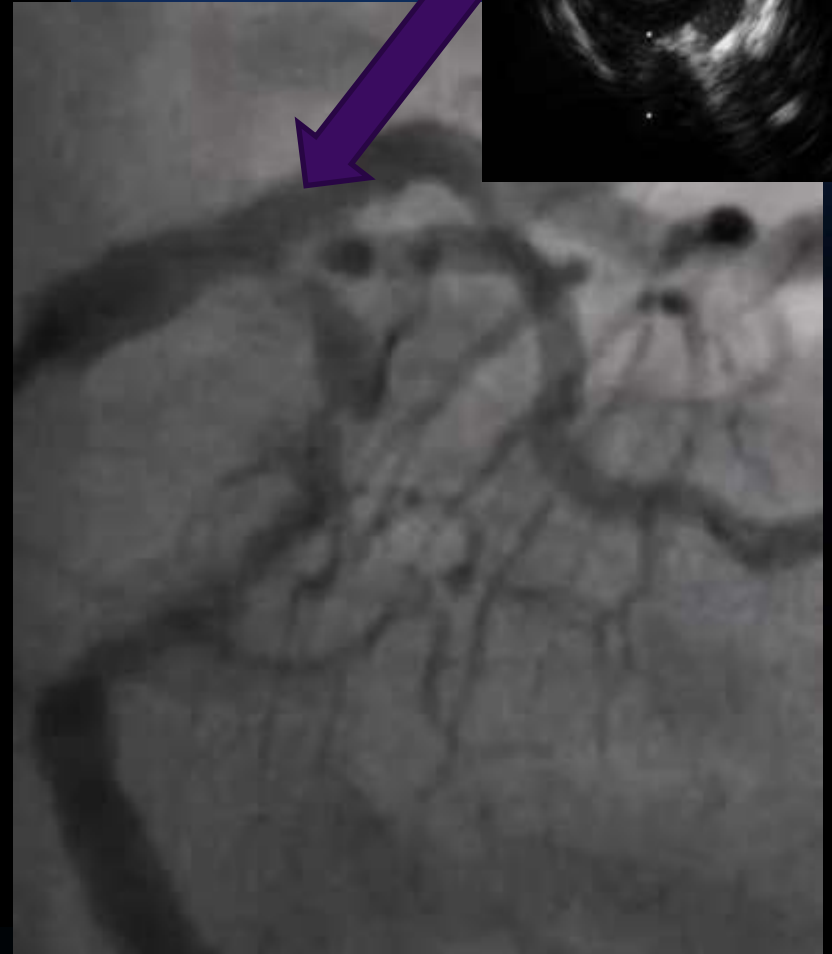
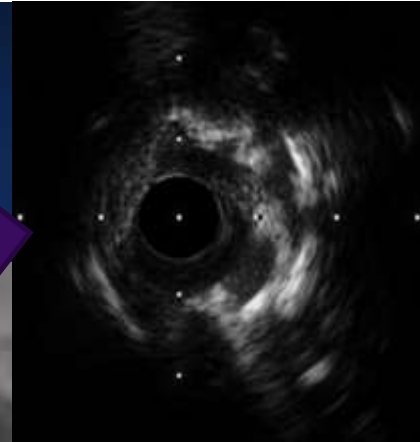
Onyx stent strut



	Resolute Integrity	Resolute Onyx
Strut Thickness	91 ug	81 ug
Strut materials	Cobalt alloy	Cobalt alloy shell + Platinum iridium core (2.6x density) Increased visibility
Crossing Profile	1.12mm	1.04mm
Deliverability		20% increased

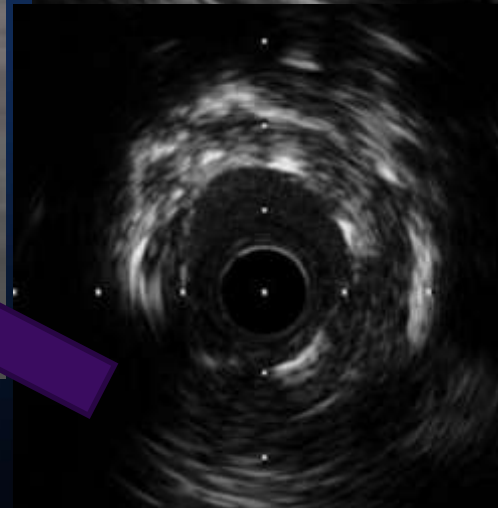
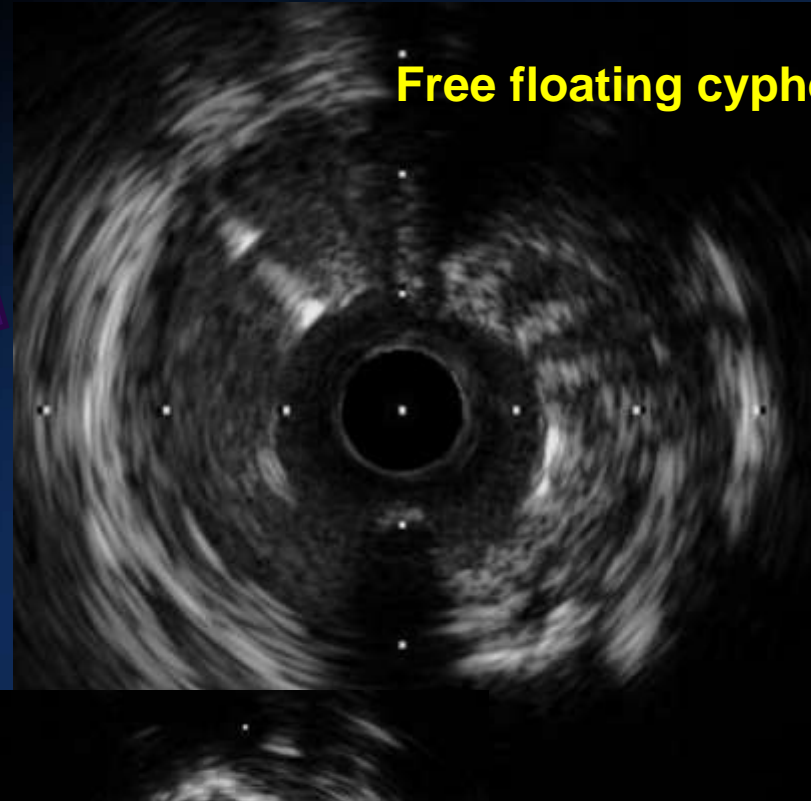
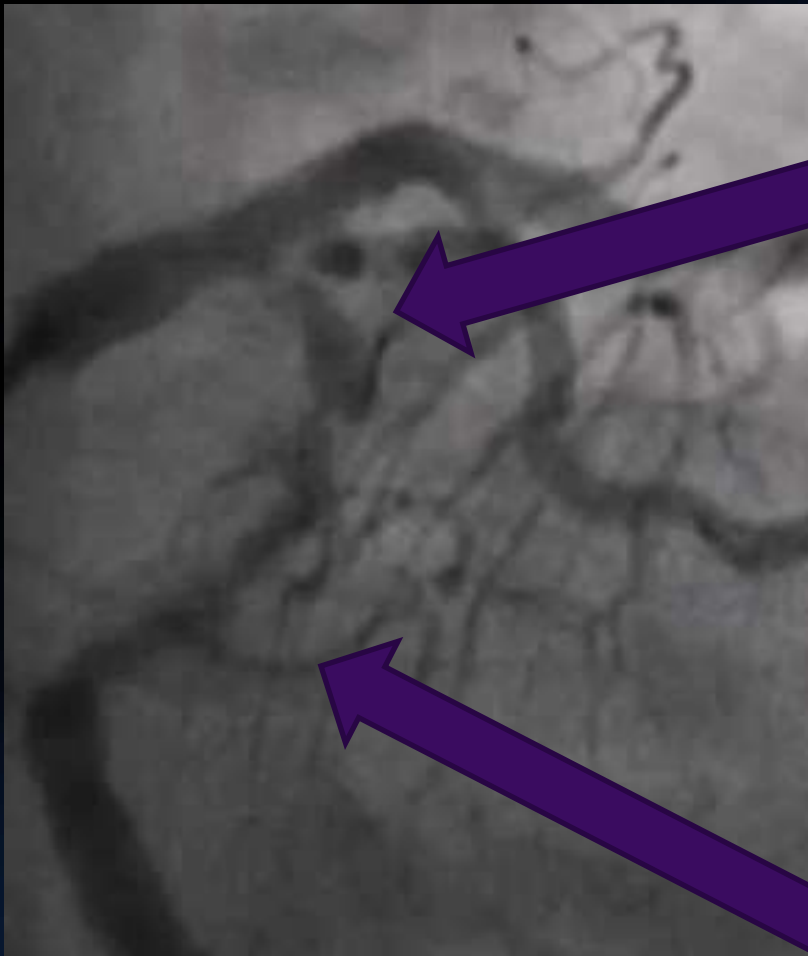
Case 1 : General Tests for Onyx

F/78, PCI to LCx with Cypher 2.5 in
2006



Lossy Compression - not intended for diagnosis

Case 1 : General Tests for Onyx



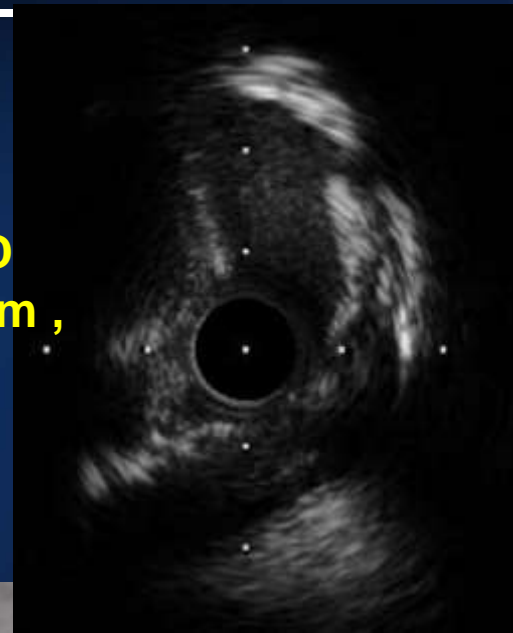
Under expansion



Case 1 : General Tests for Onyx



Ostial LAD
MLA ~ 3mm ,
calcified

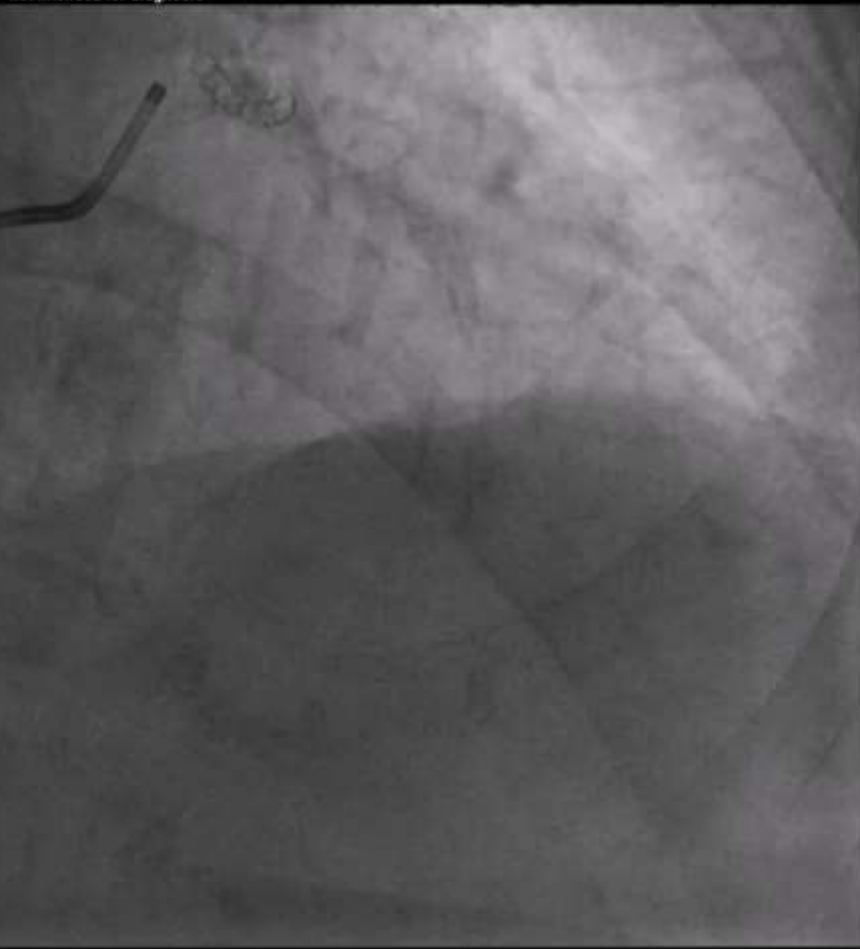


Retroflex Lcx with
free floating cypher



Case 1 : General Tests for Onyx

not intended for diagnosis



Radial Strength



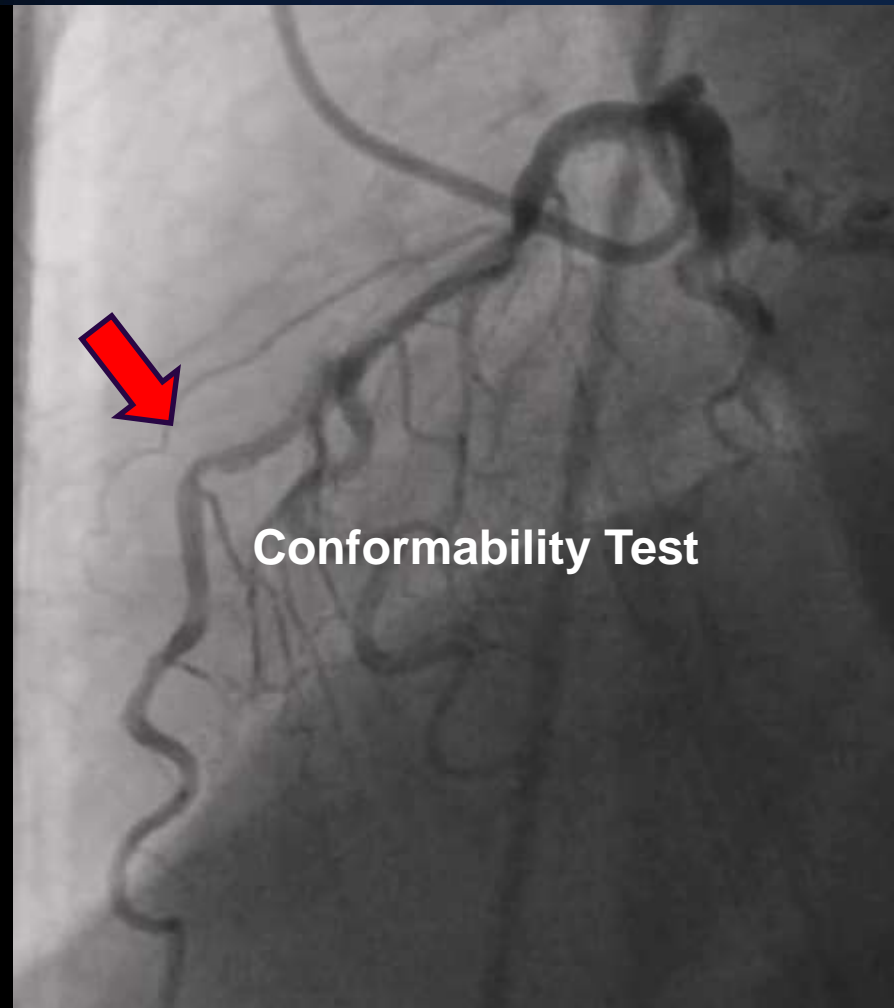
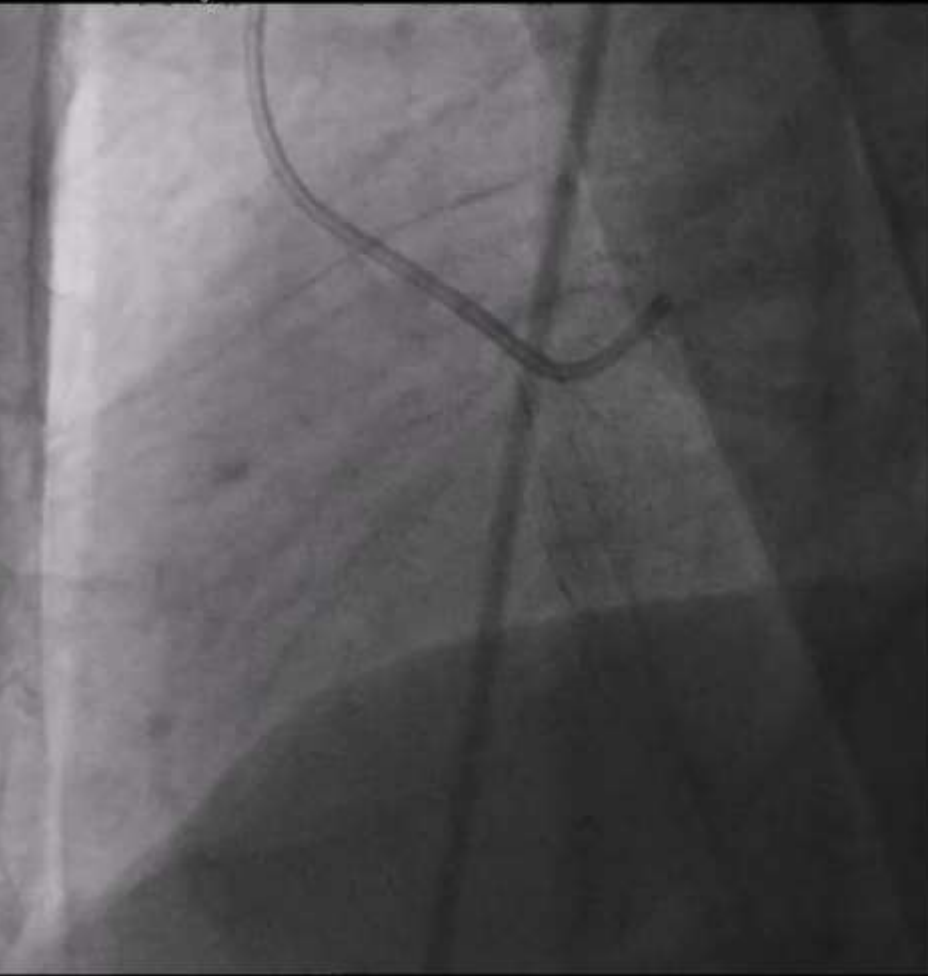
Deliverability

Calcified and long LAD lesion



Case 1 : General Tests for Onyx

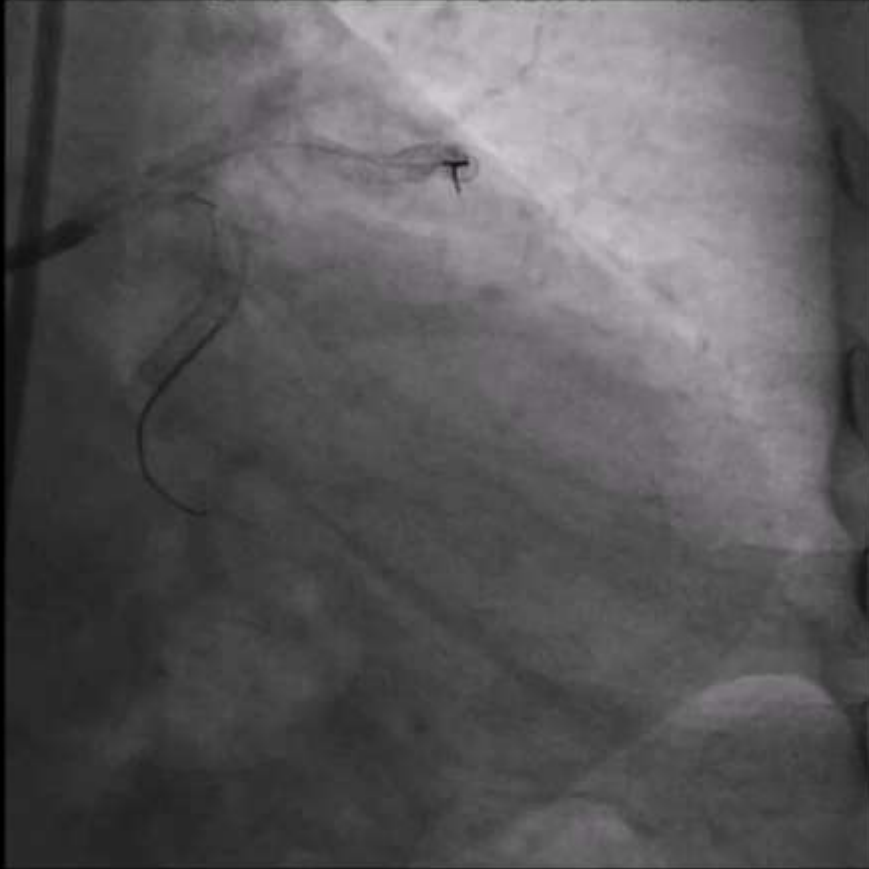
ession - not intended for diagnosis



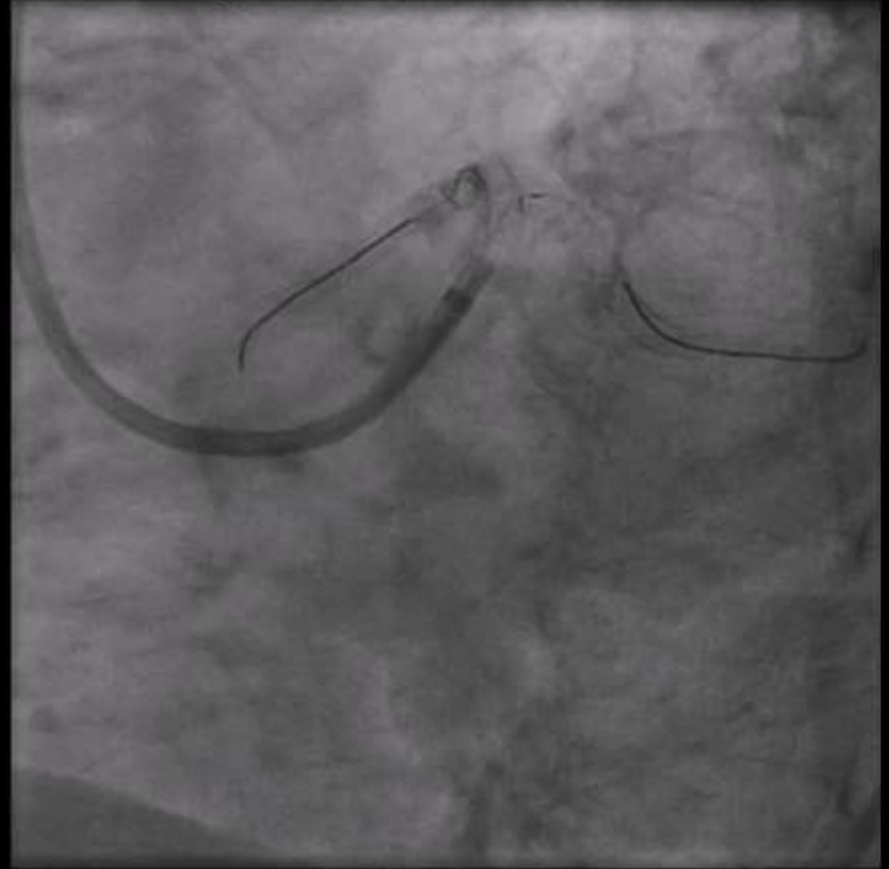
Conformability Test

Case 1 : Exam results for Onyx

Lossy Compression - not intended for diagnosis

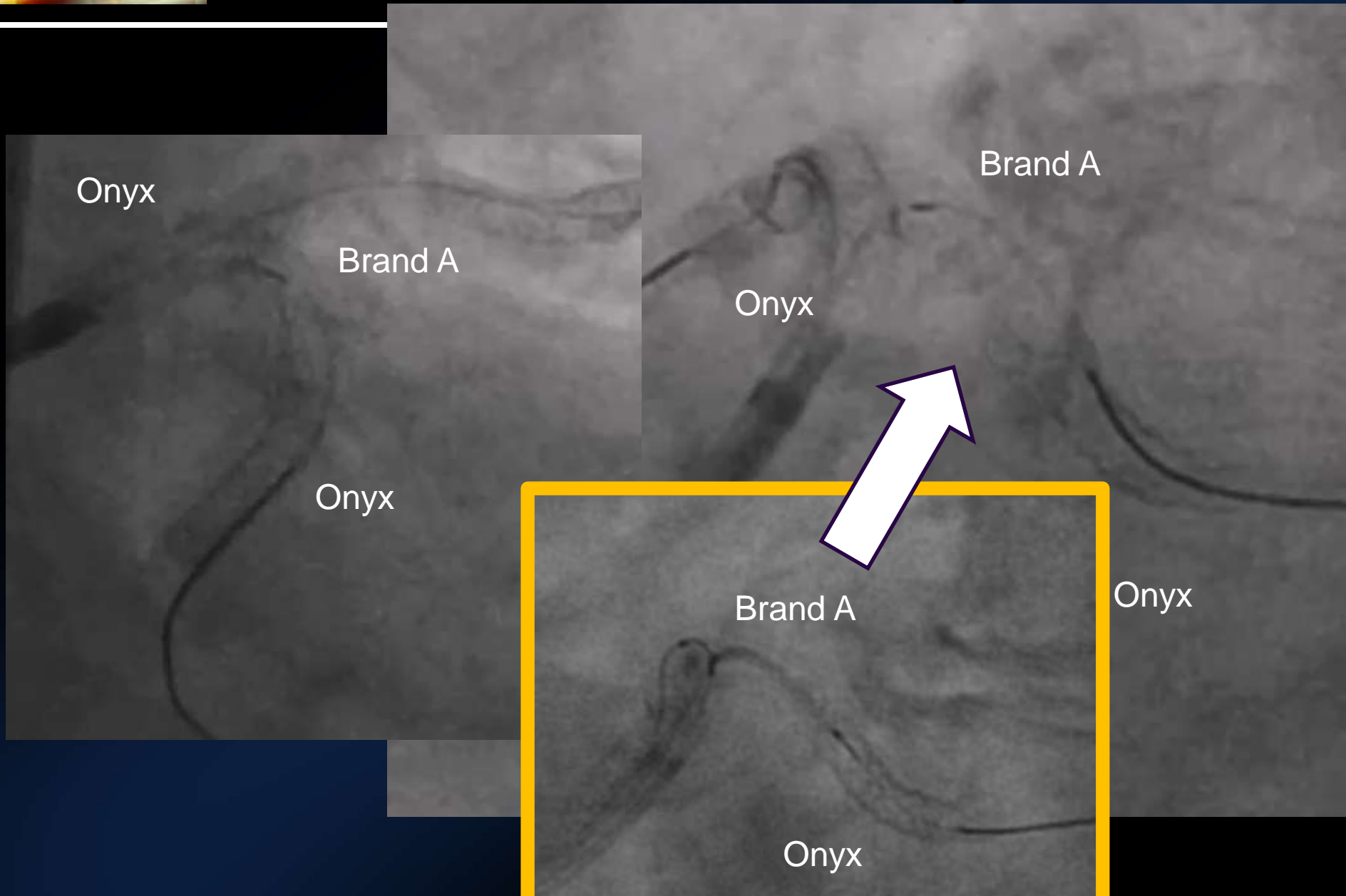


Lossy Compression - not intended for diagnosis



Visibility Test: pLCx Brand A,
LM & m-dLCx Onyx

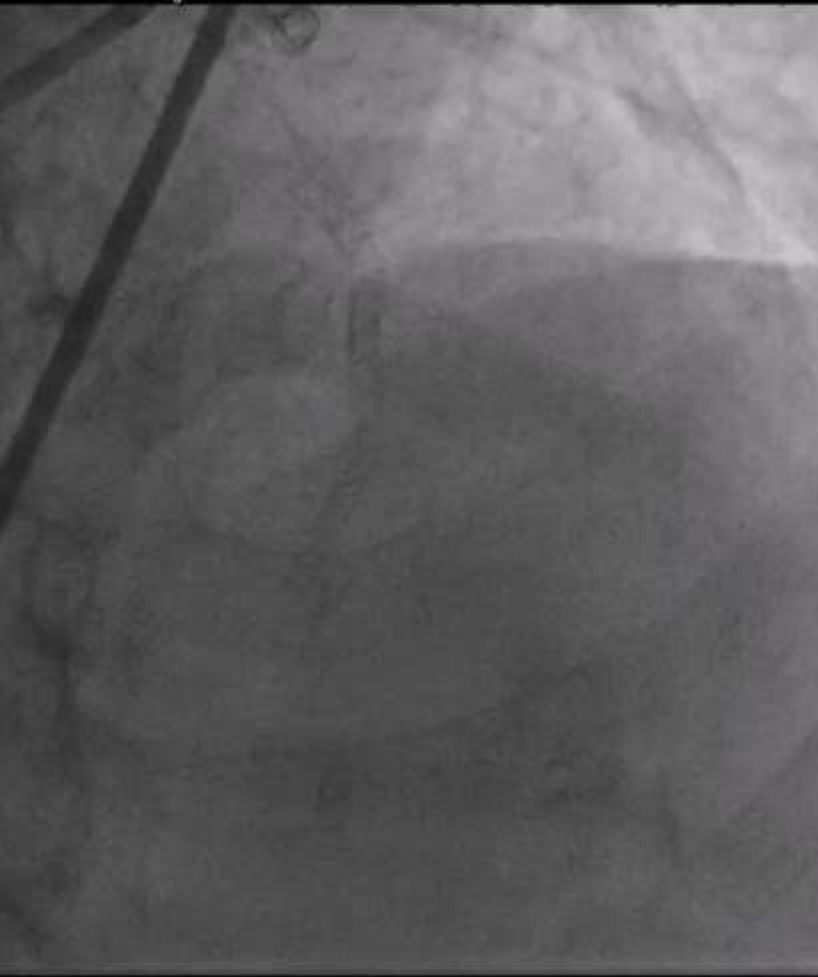
Visibility Test: pLCx Band A LM & m-dLCx Onyx



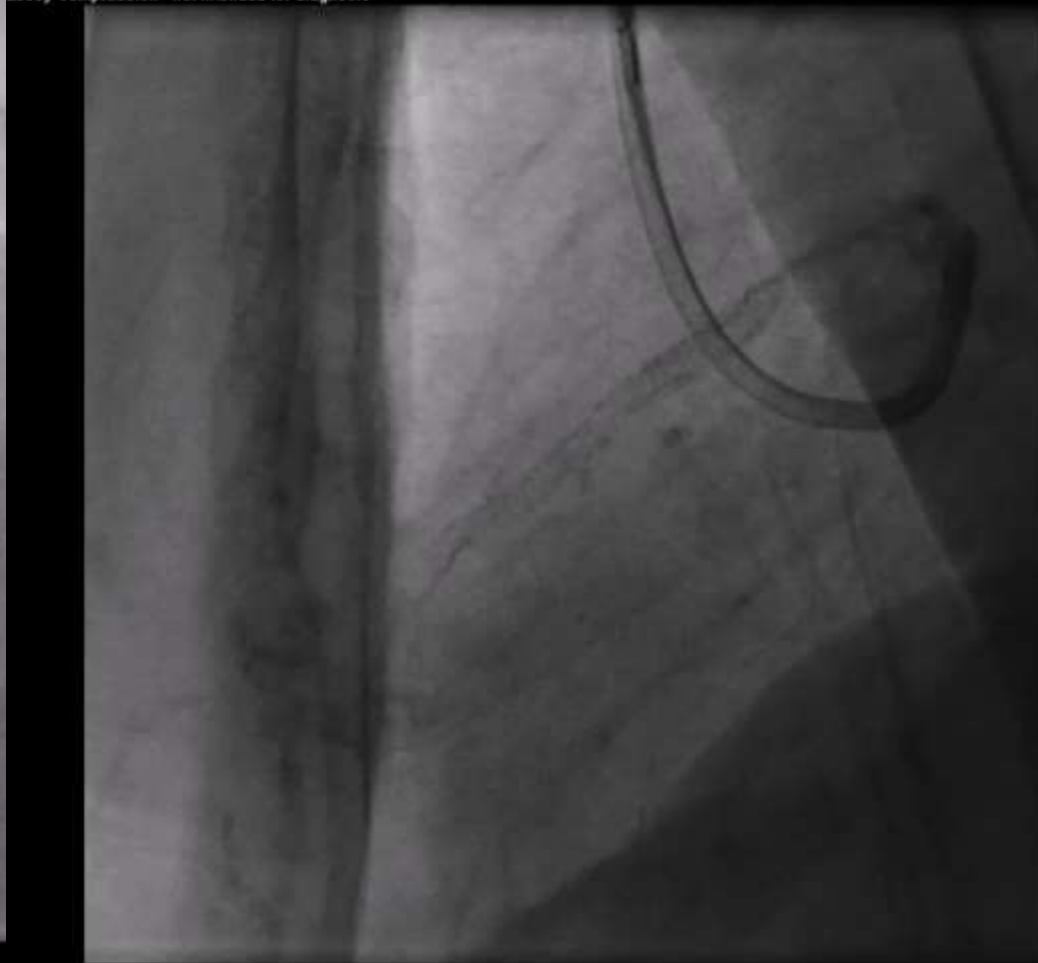


Case 1 : Exam Results for Onyx - radial strength and **conformability**

n - not intended for diagnosis



Lessy Compression - not intended for diagnosis



Radial strength and conformability



Case 2 More choice in size & length

Onyx 2.0 & 5.0

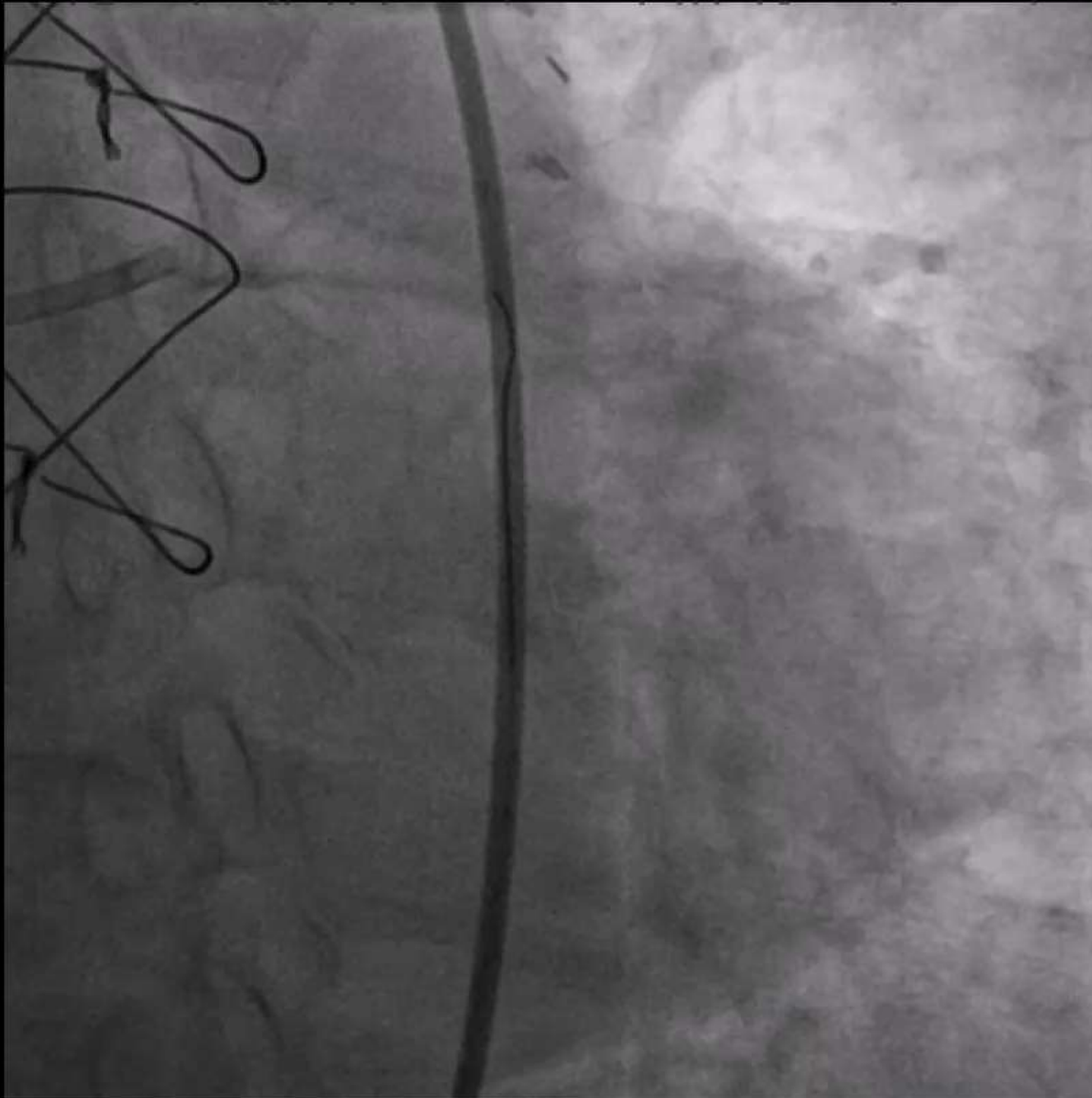
► Onyx Size Choice from 2.0 to 5.0

		STENT LENGTH (mm)									
STENT DIAMETER (mm)	2.00	8	12	15	18	22	26	30			
	2.25	8	12	15	18	22	26	30	34	38	
	2.50	8	12	15	18	22	26	30	34	38	
	2.75	8	12	15	18	22	26	30	34	38	
	3.00	8	12	15	18	22	26	30	34	38	
	3.50	8	12	15	18	22	26	30	34	38	
	4.00	8	12	15	18	22	26	30	34	38	
	4.50		12	15	18	22	26	30			
	5.00		12	15	18	22	26	30			



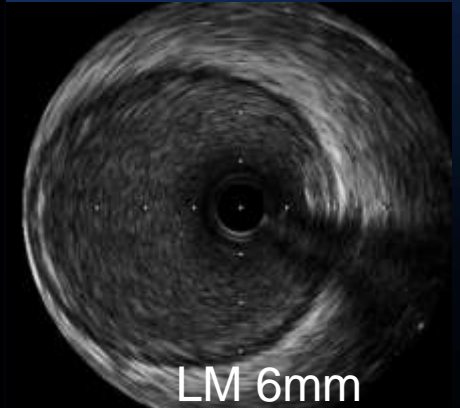
Case 2 Onyx 2.0 and 5.0

Lossy Compression - not intended for diagnosis



Challenge:

1. Mismatch
2. Complex bifurcation



LM 6mm

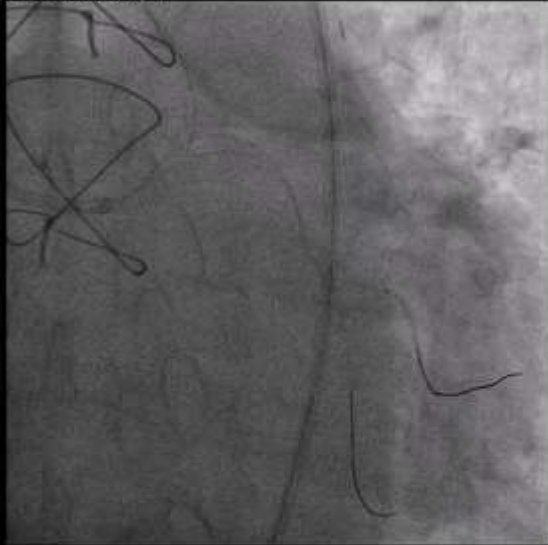


Plaque extent into LM

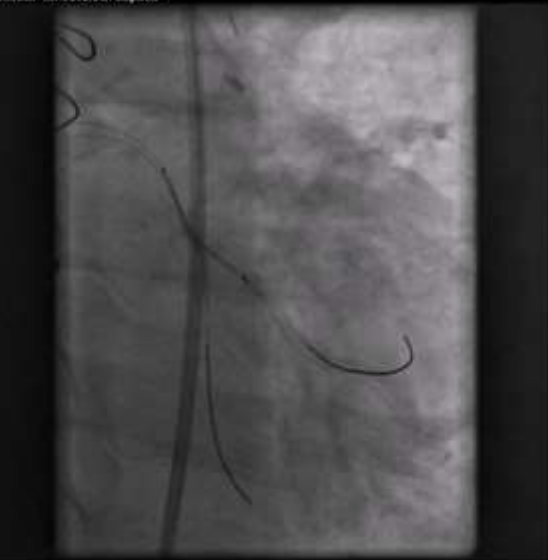


Bifurcation done by DK Crush

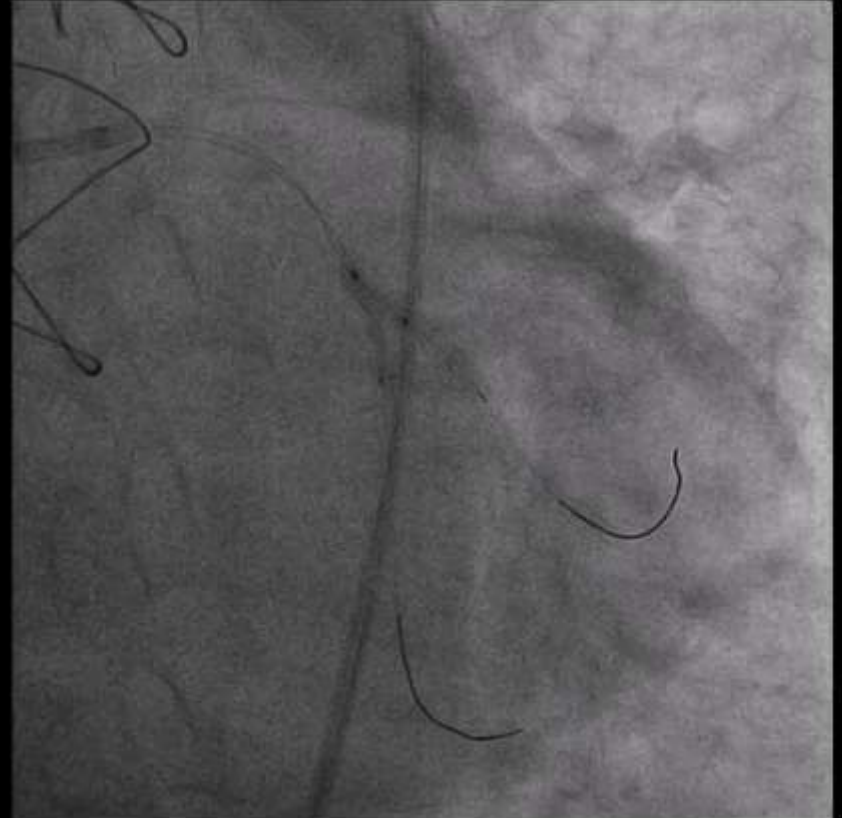
Lesly Compression - not intended for diagnosis



Lesly Compression - not intended for diagnosis



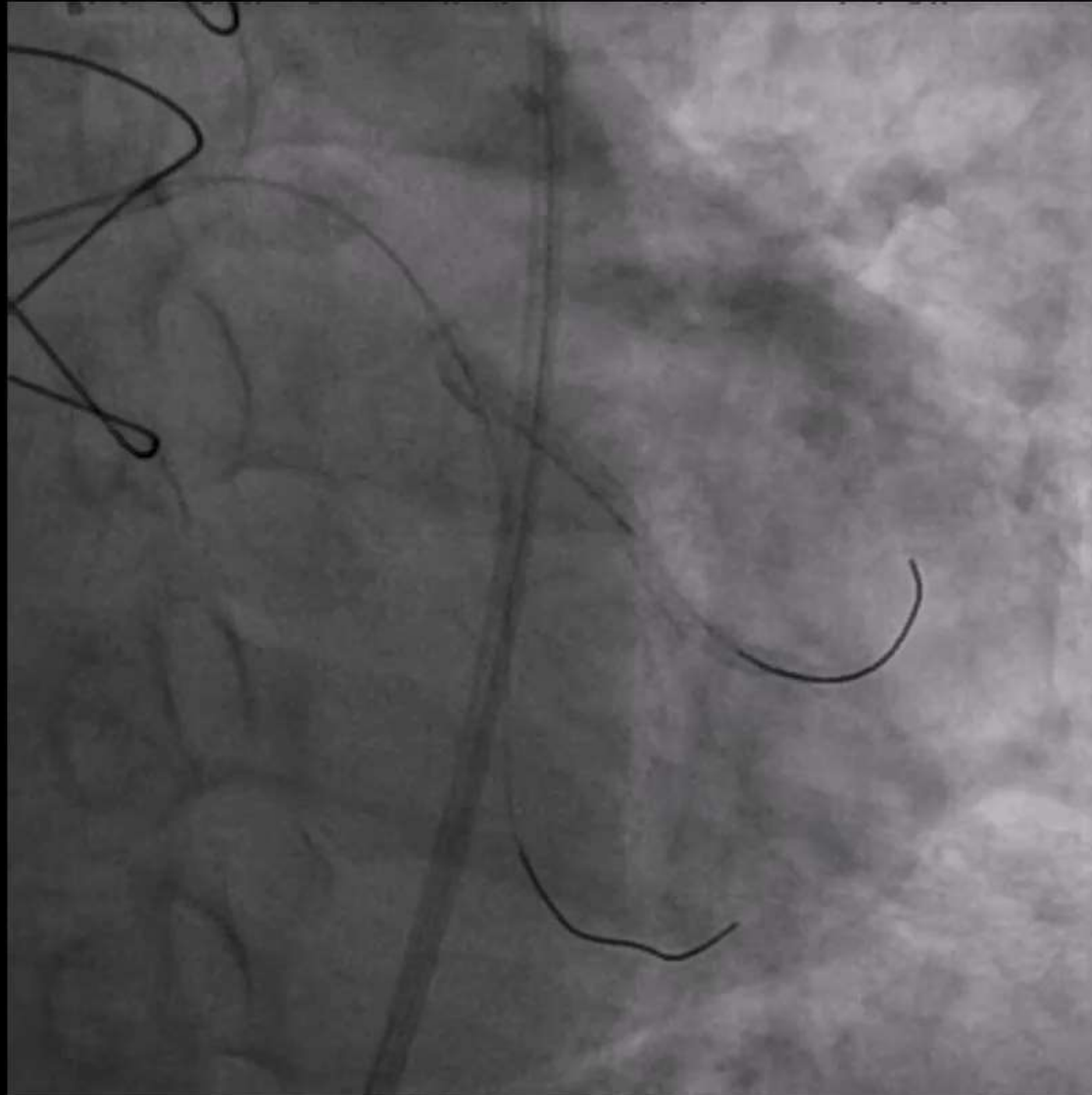
Lesly Compression - not intended for diagnosis



2 steps mini kissing and POT

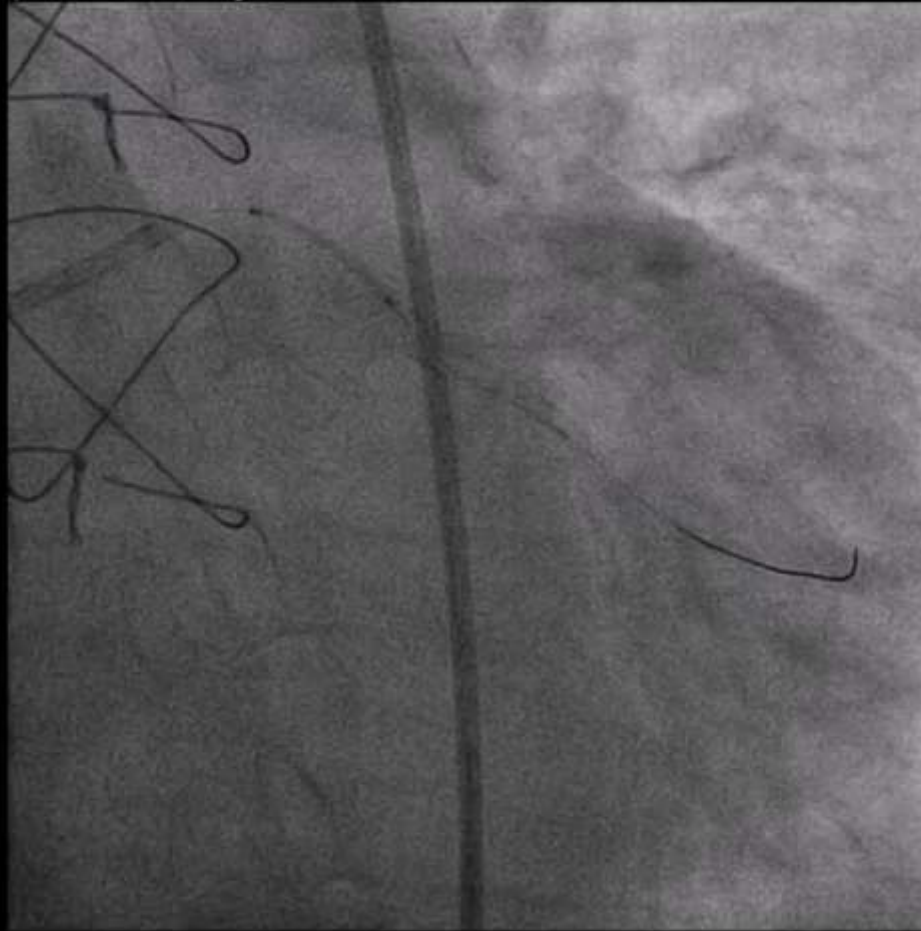
What next? How to Treat?

Lossy Compression - not intended for diagnosis



Use self expanding stent 3.5 → 6.0

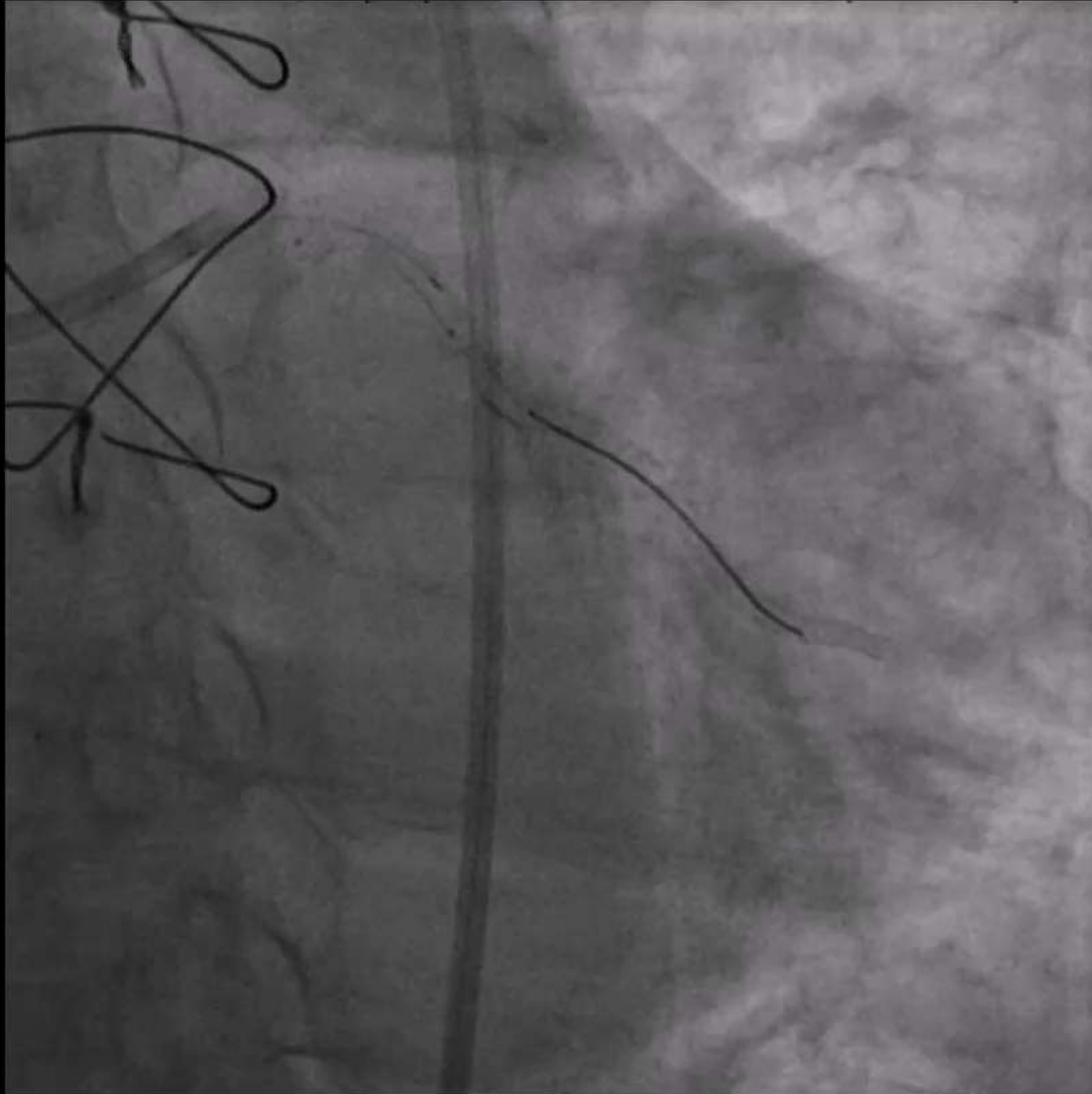
Lessy Compression - not intended for diagnosis



Self apposing stent
3.5 -4.5 x 17mm

Good !! ??

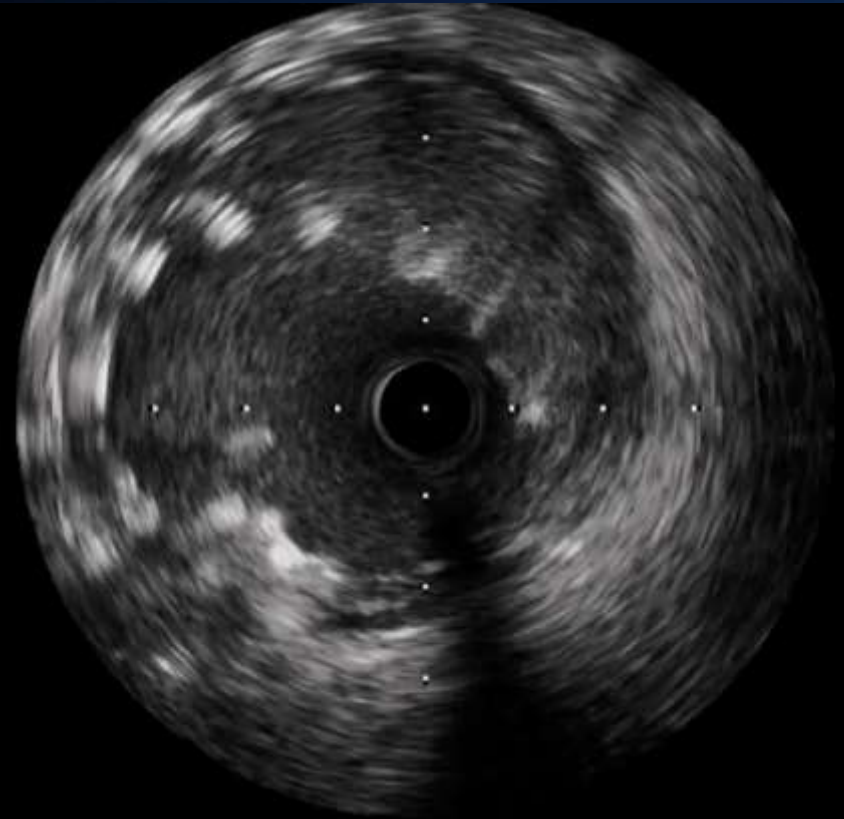
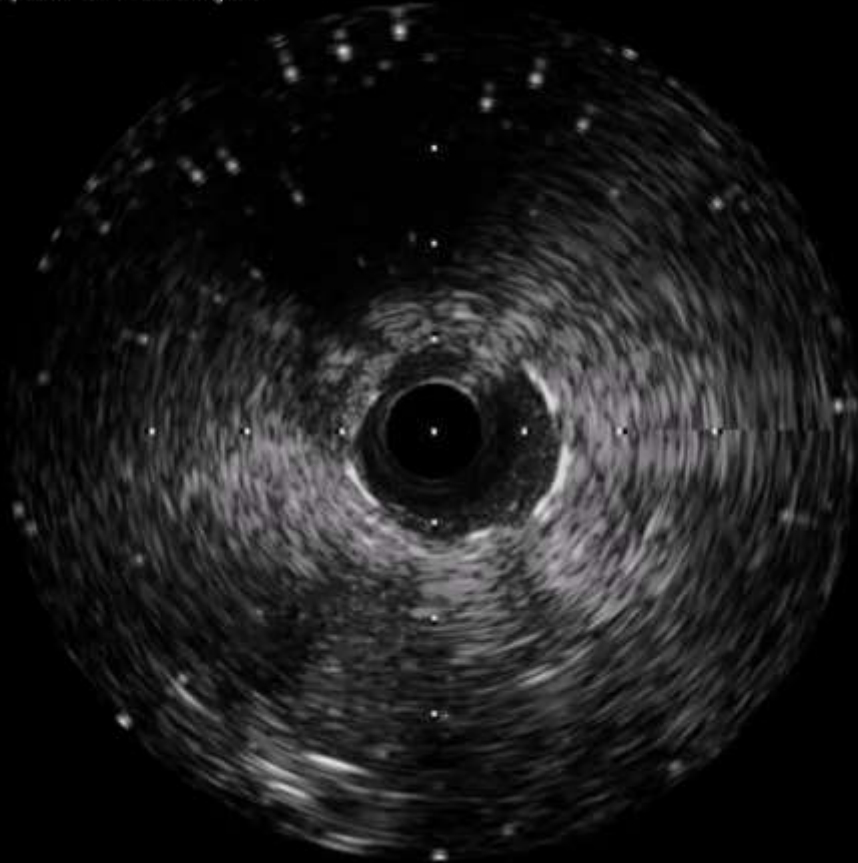
Lossy Compression - not intended for diagnosis



Let's see the IVUS



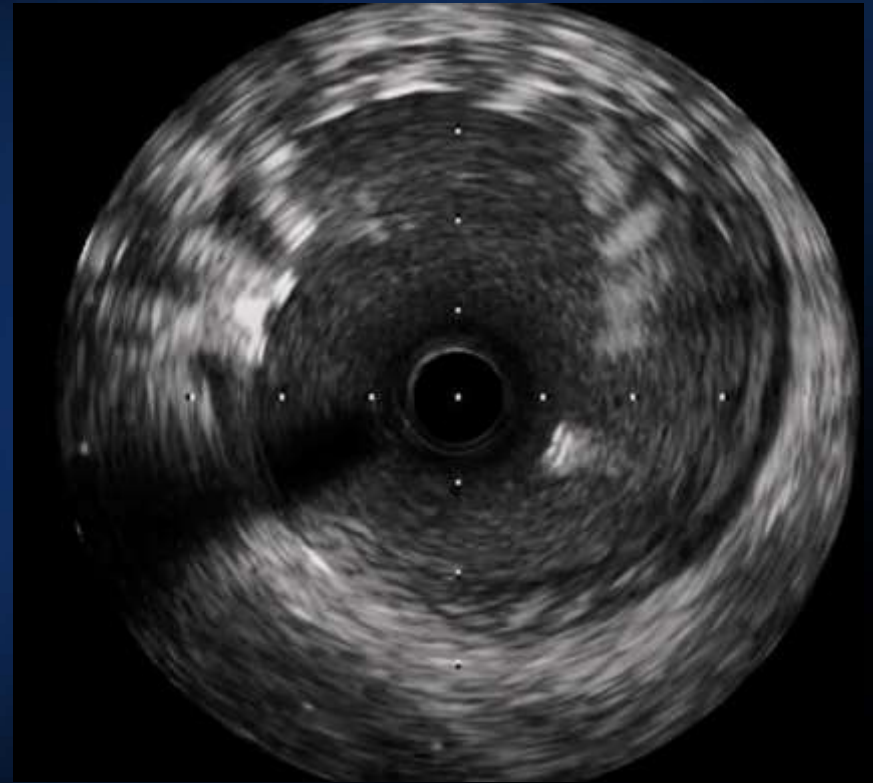
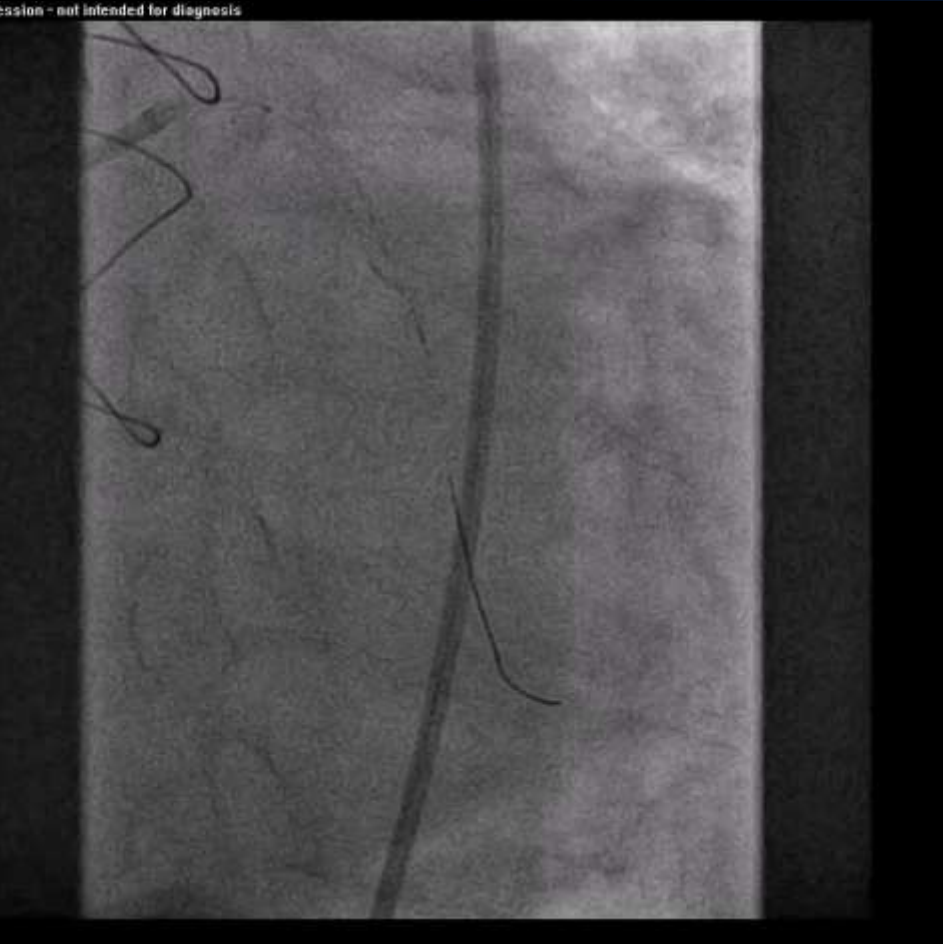
Lossy Compression - not intended for diagnosis



4.5 NC at 20 ATM



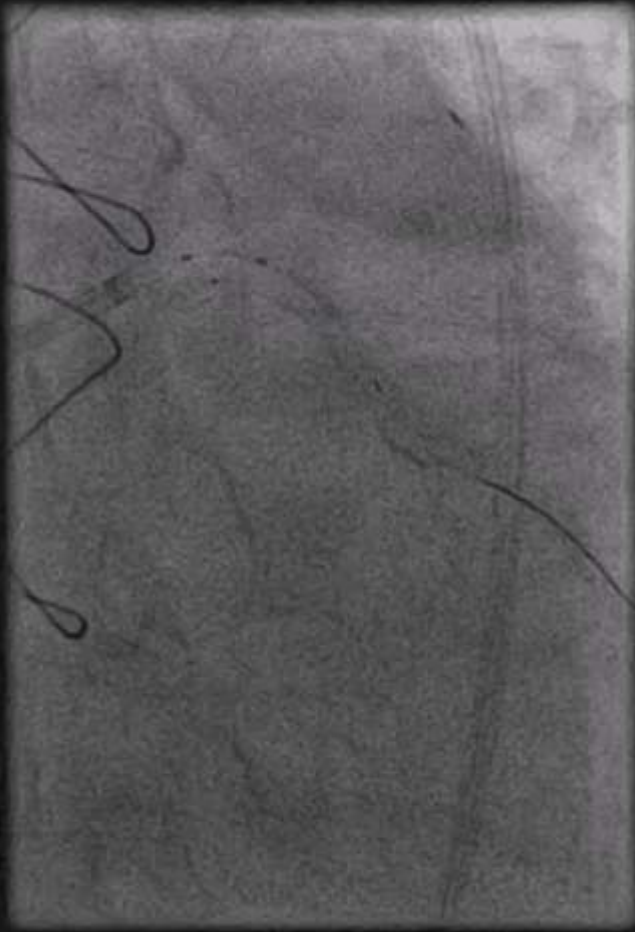
ession - not intended for diagnosis



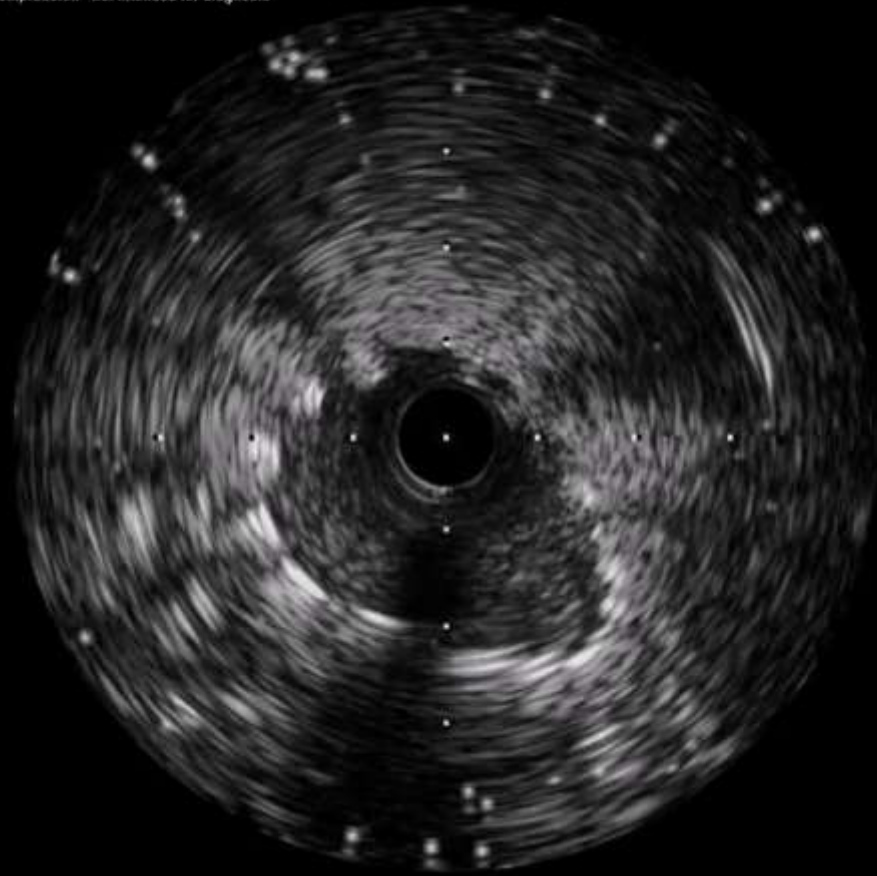
Self recoil !?

Never give up !! → 5.5 NC (3 times)

Intended for diagnosis



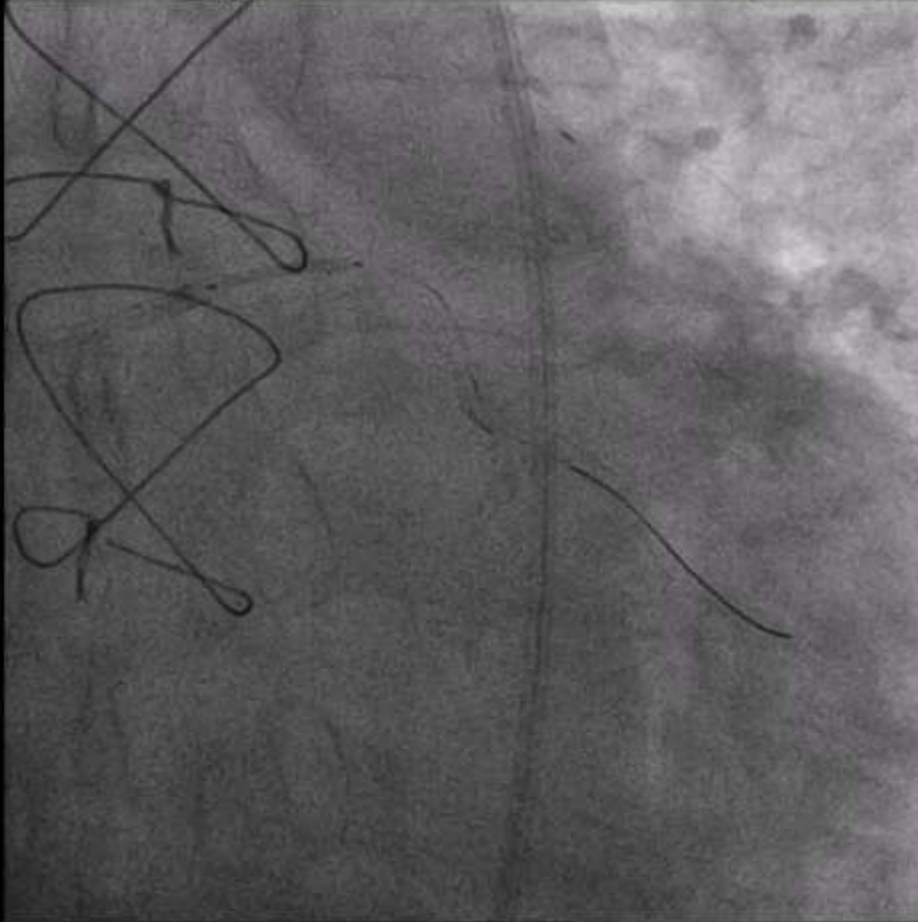
Lossy Compression - not intended for diagnosis





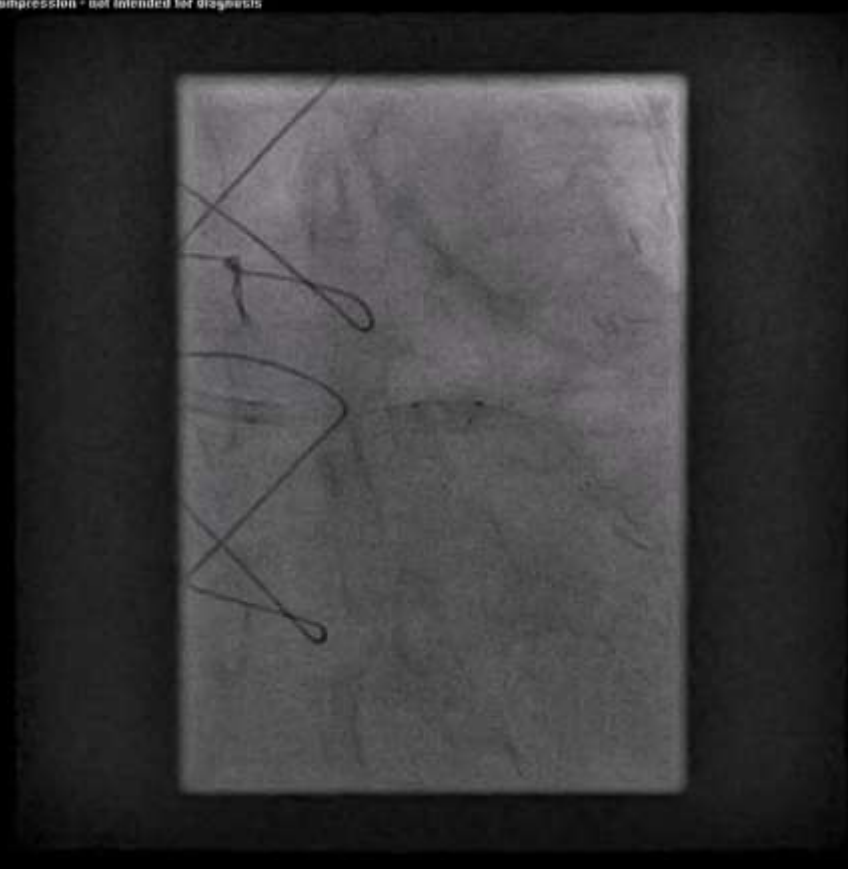
Stent the LM with **Onyx 5.0** . Why?

Lessy Compression - not intended for diagnosis



Onyx 5.0

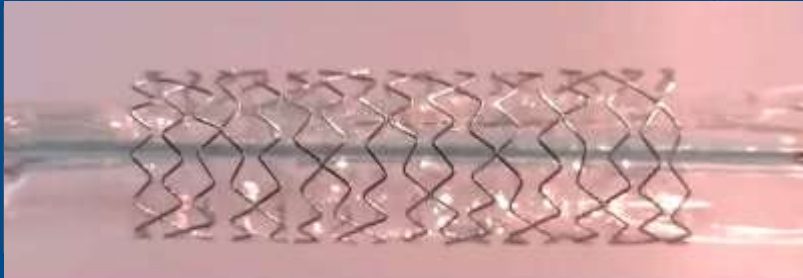
Lessy Compression - not intended for diagnosis



5.5 NC 20 ATM

**Resolute
Onyx™ DES**

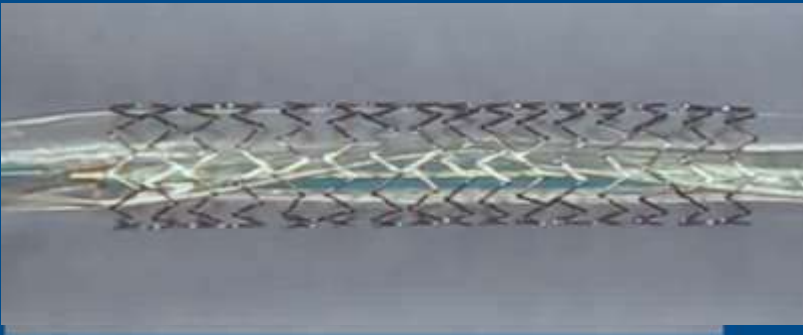
5.0 mm x 18 mm
Deployed to 5.75 mm



Average foreshortening: 0.8%

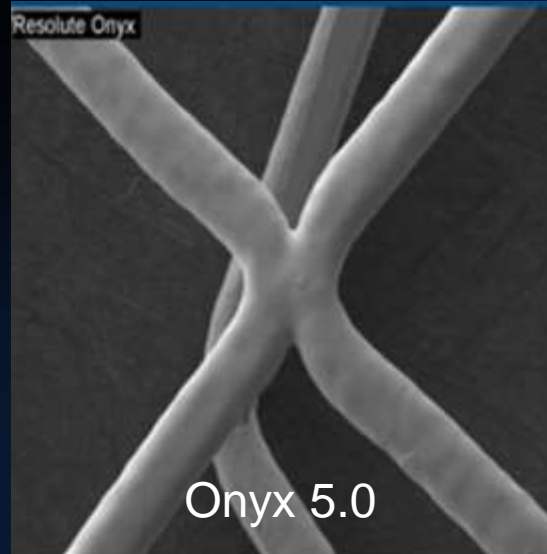
Stent Z 4.0

Deployed to 5.75 mm



Average foreshortening: 14.7%

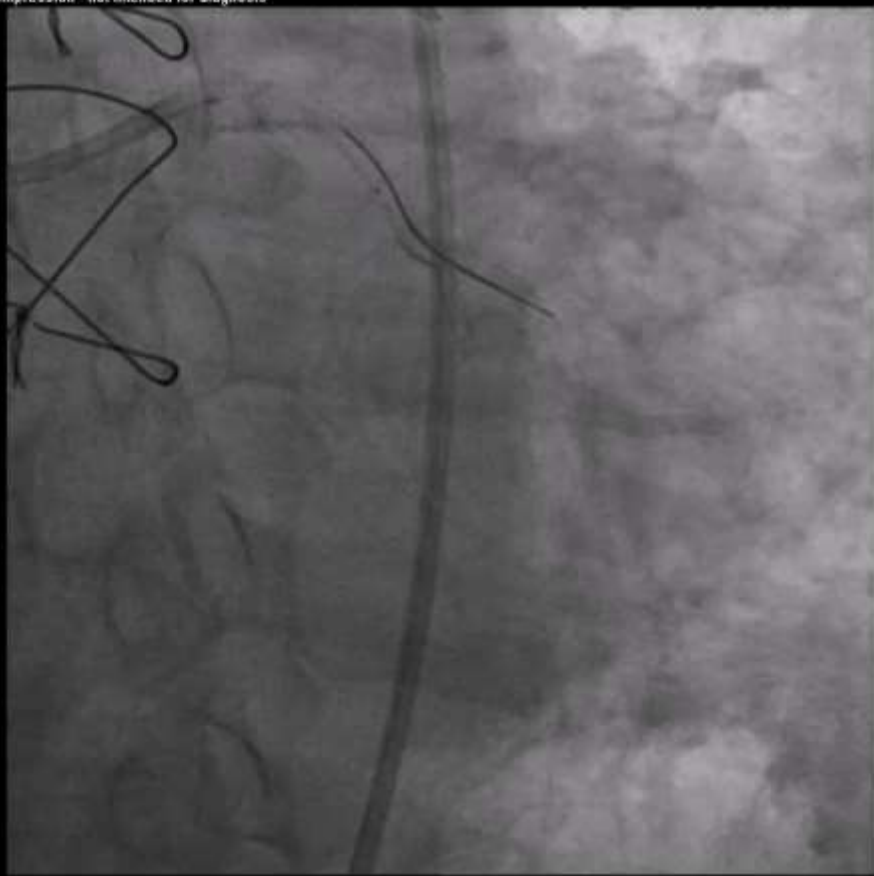
1. Radial Strength
2. Shortening
3. Polymer



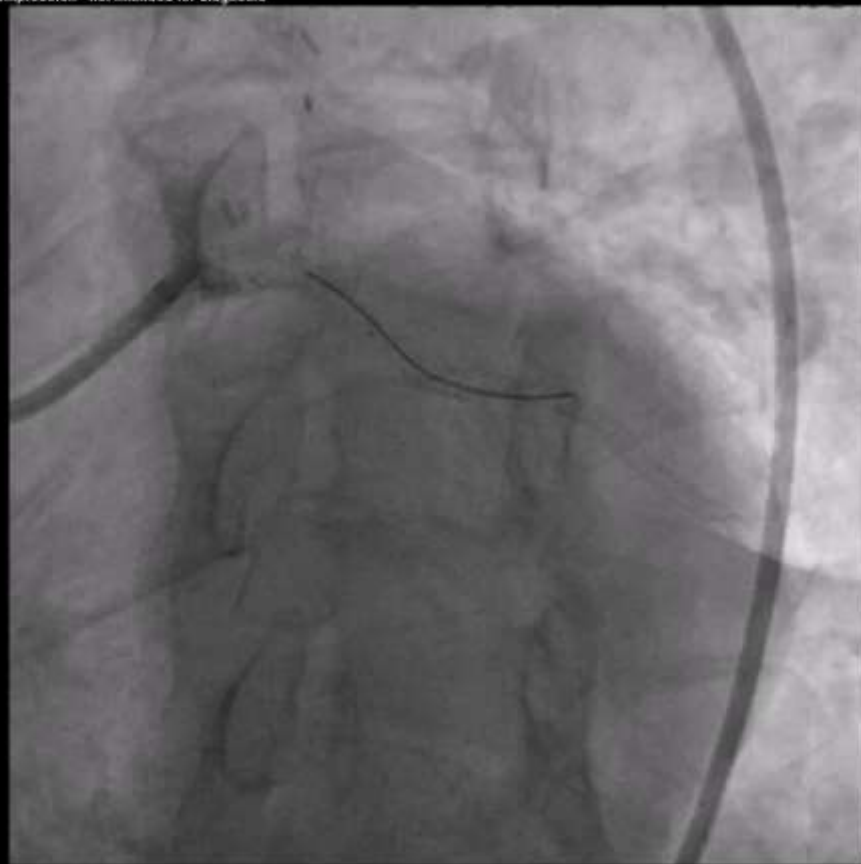


Case 2 final coro for onyx 2.0 & 5.0

y Compression - not intended for diagnosis

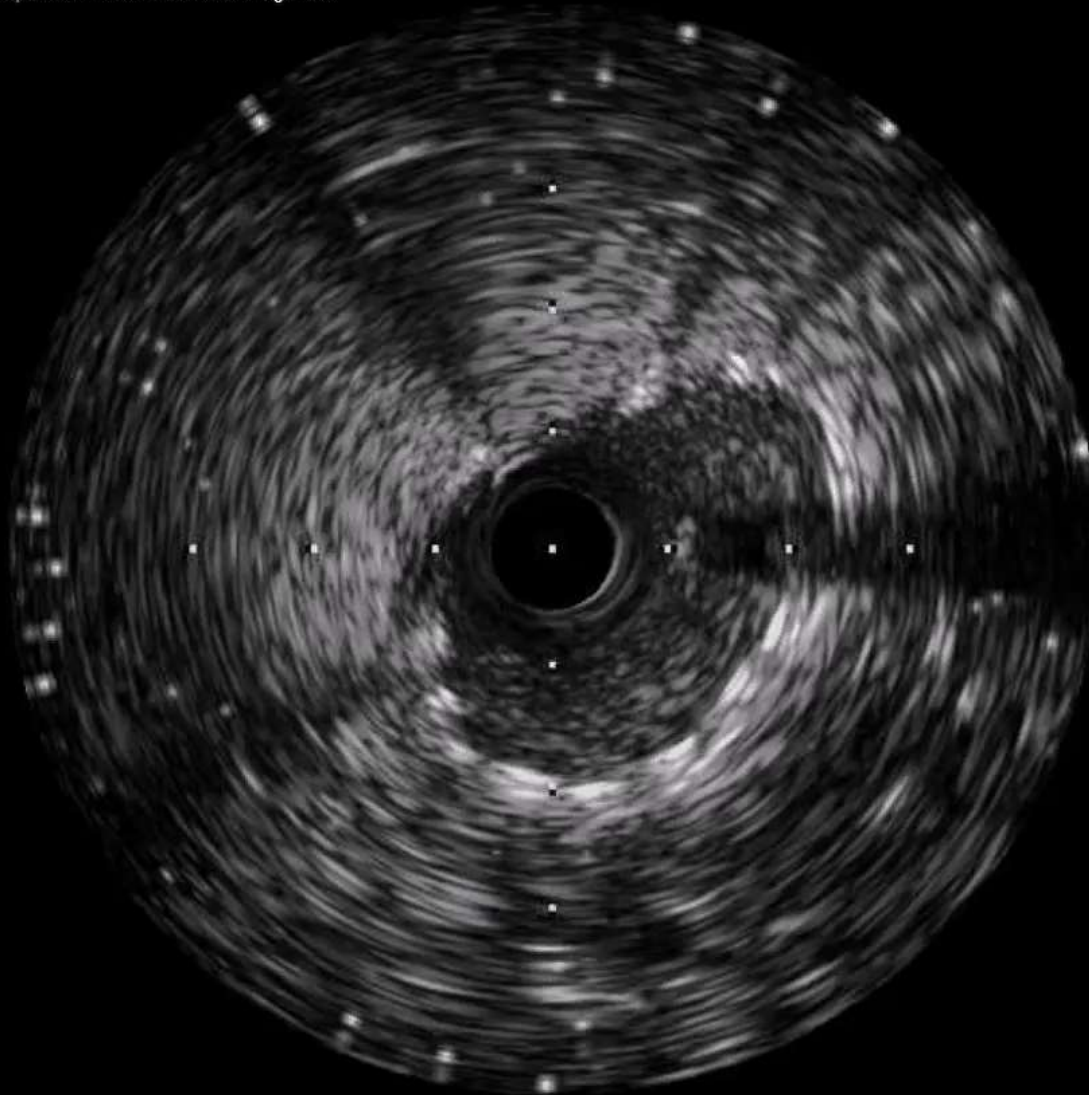


Lossy Compression - not intended for diagnosis



Final IVUS

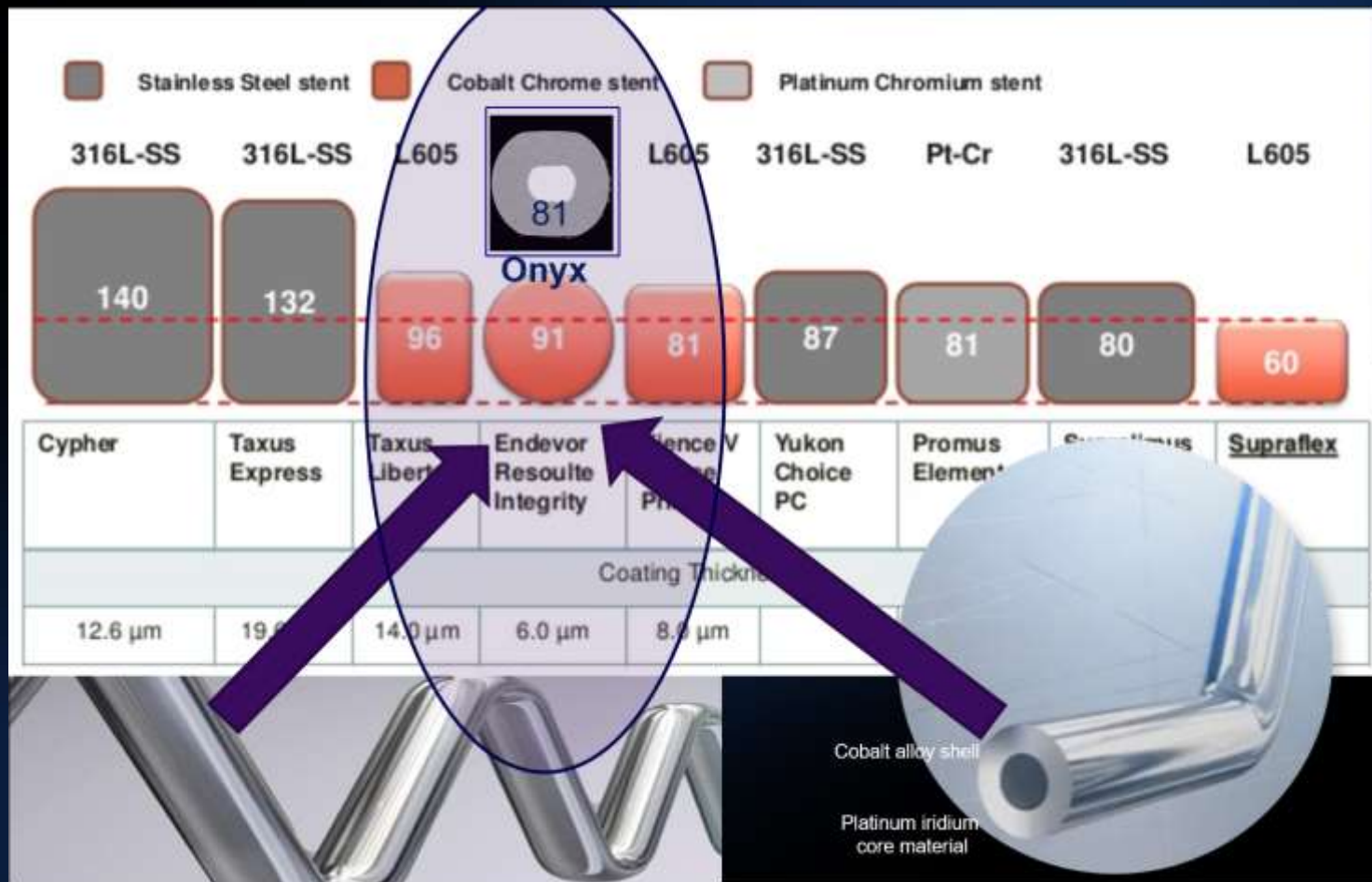
Lossy Compression - not intended for diagnosis



Case 3 & 4 Onyx for bifurcation

► CoreWire Technology

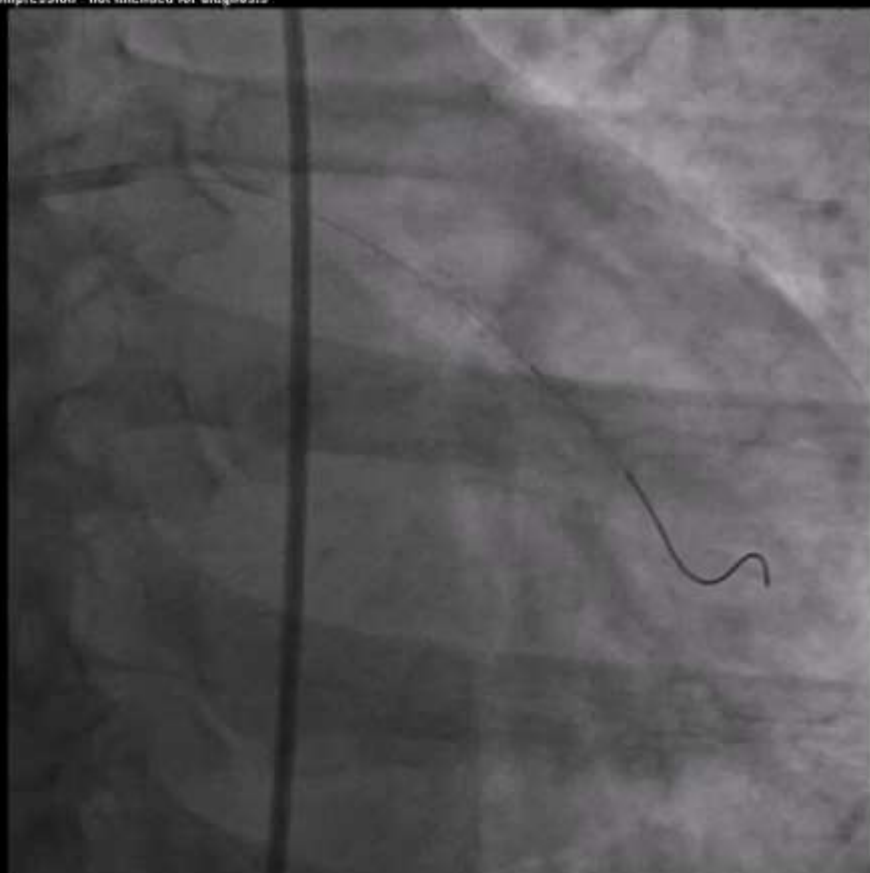
- More visible → more easy to control SB wiring



Case 3 & 4 Onyx for bifurcation - SB rewiring excellent

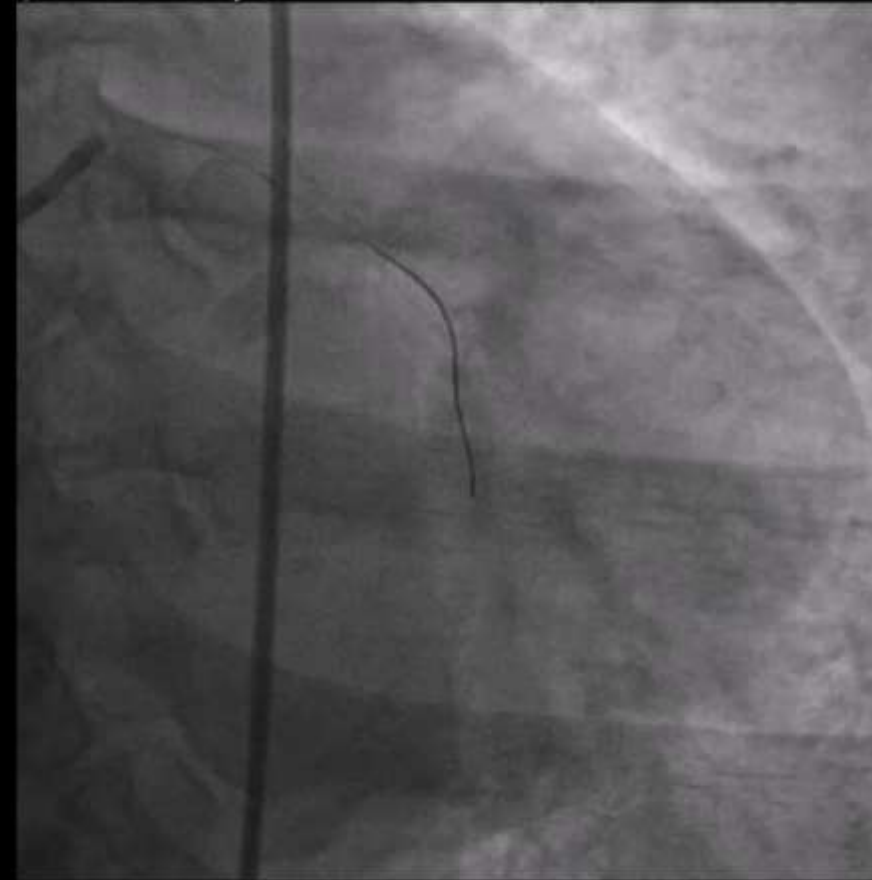
Compression - not intended for diagnosis

Lossy Compression - not intended for diagnosis



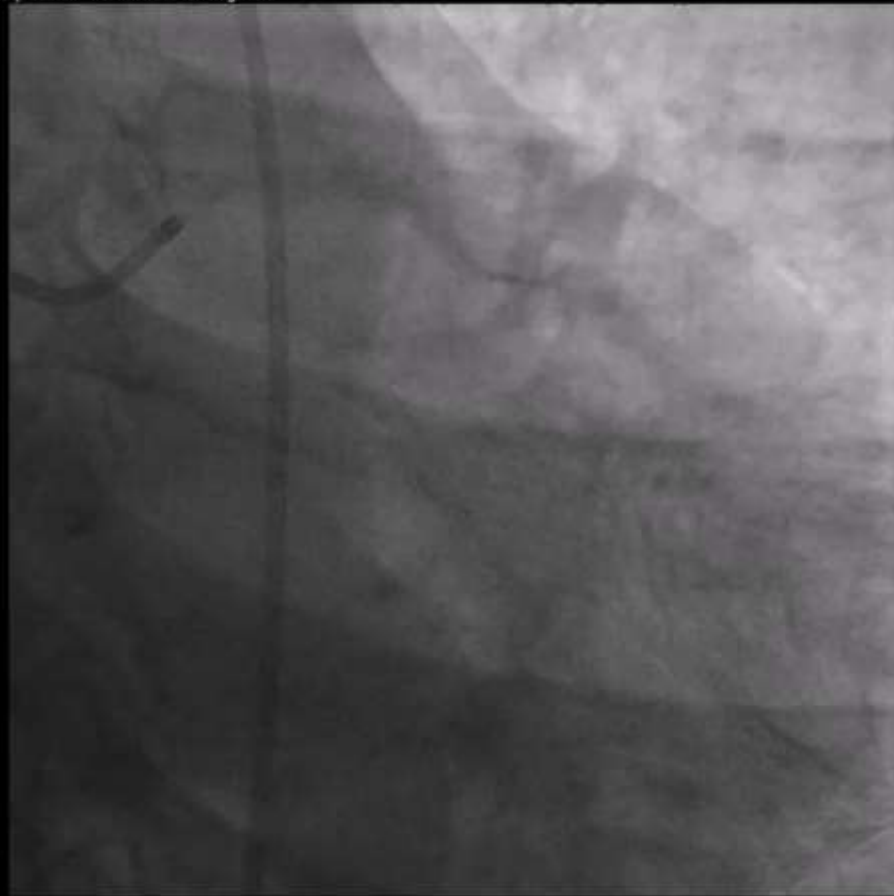
Case 3 & 4 Onyx for bifurcation - SB rewiring excellent

Compression - not intended for diagnosis



Final coro after
rewire and kissing

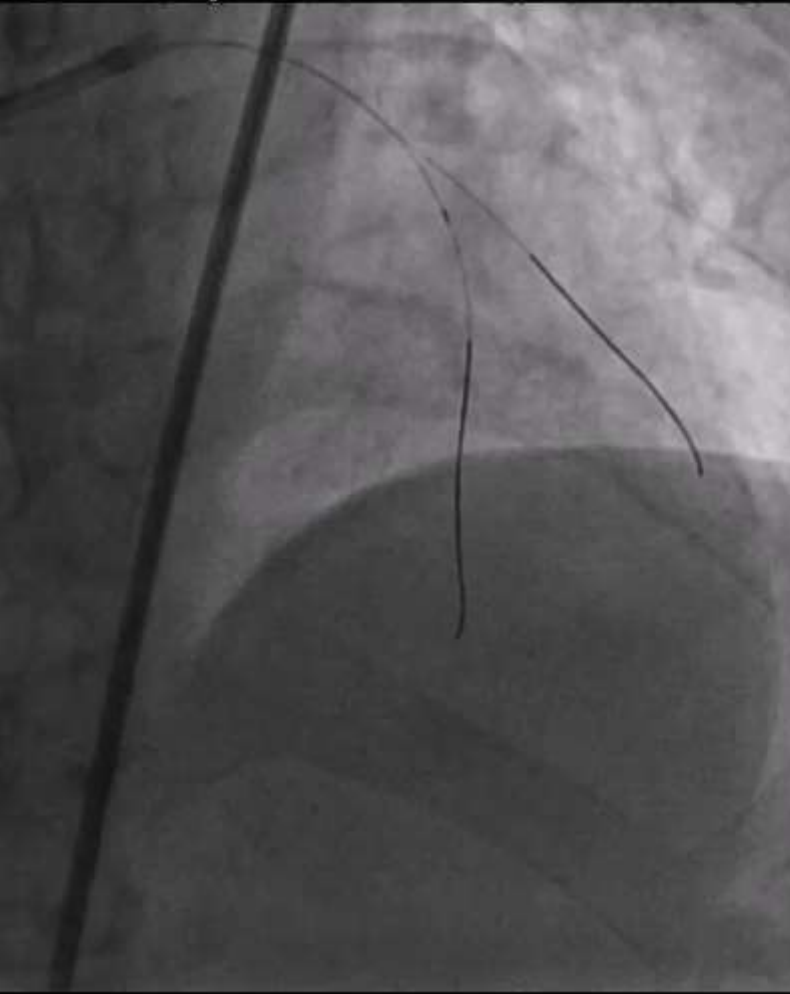
Lossy Compression - not intended for diagnosis



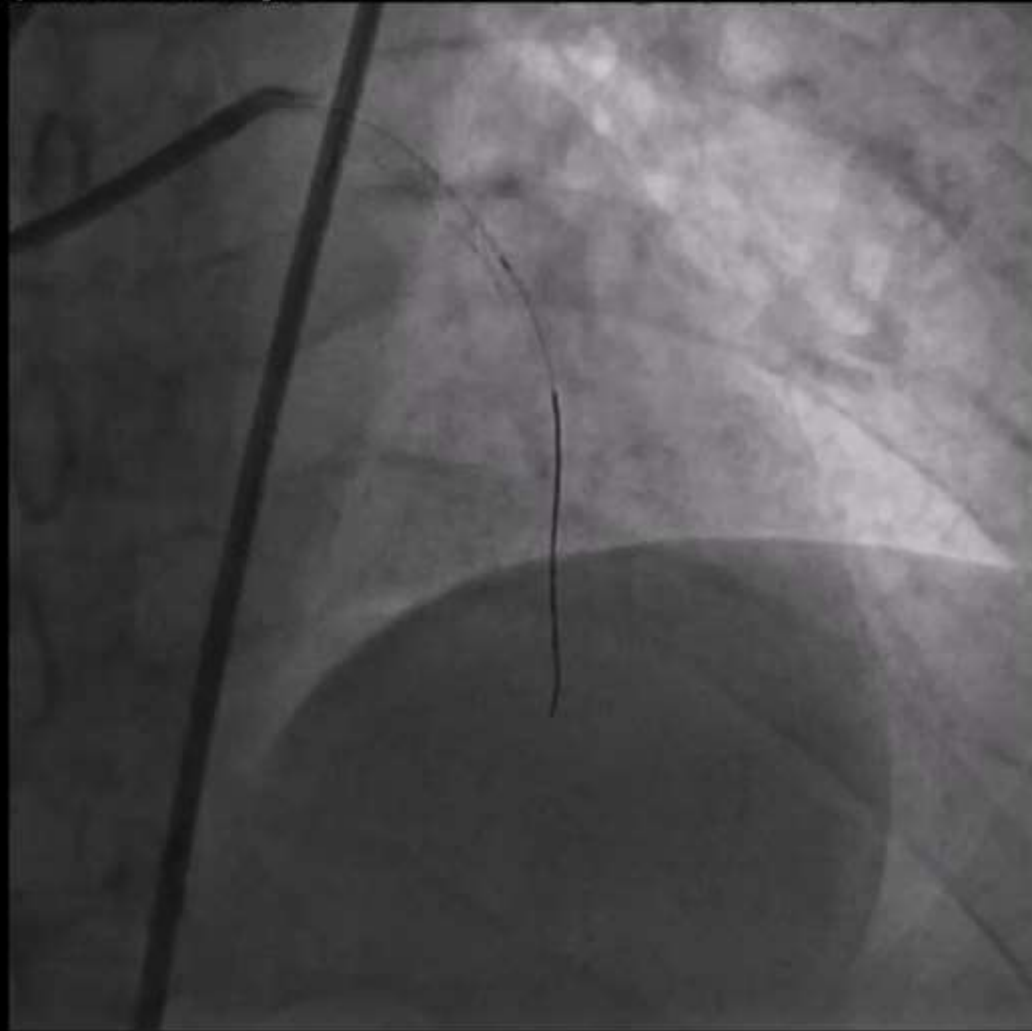
Restudy coro 3 months later

Case 4 : easy side branch crossing

ssion - not intended for diagnosis



Lossy Compression - not intended for diagnosis

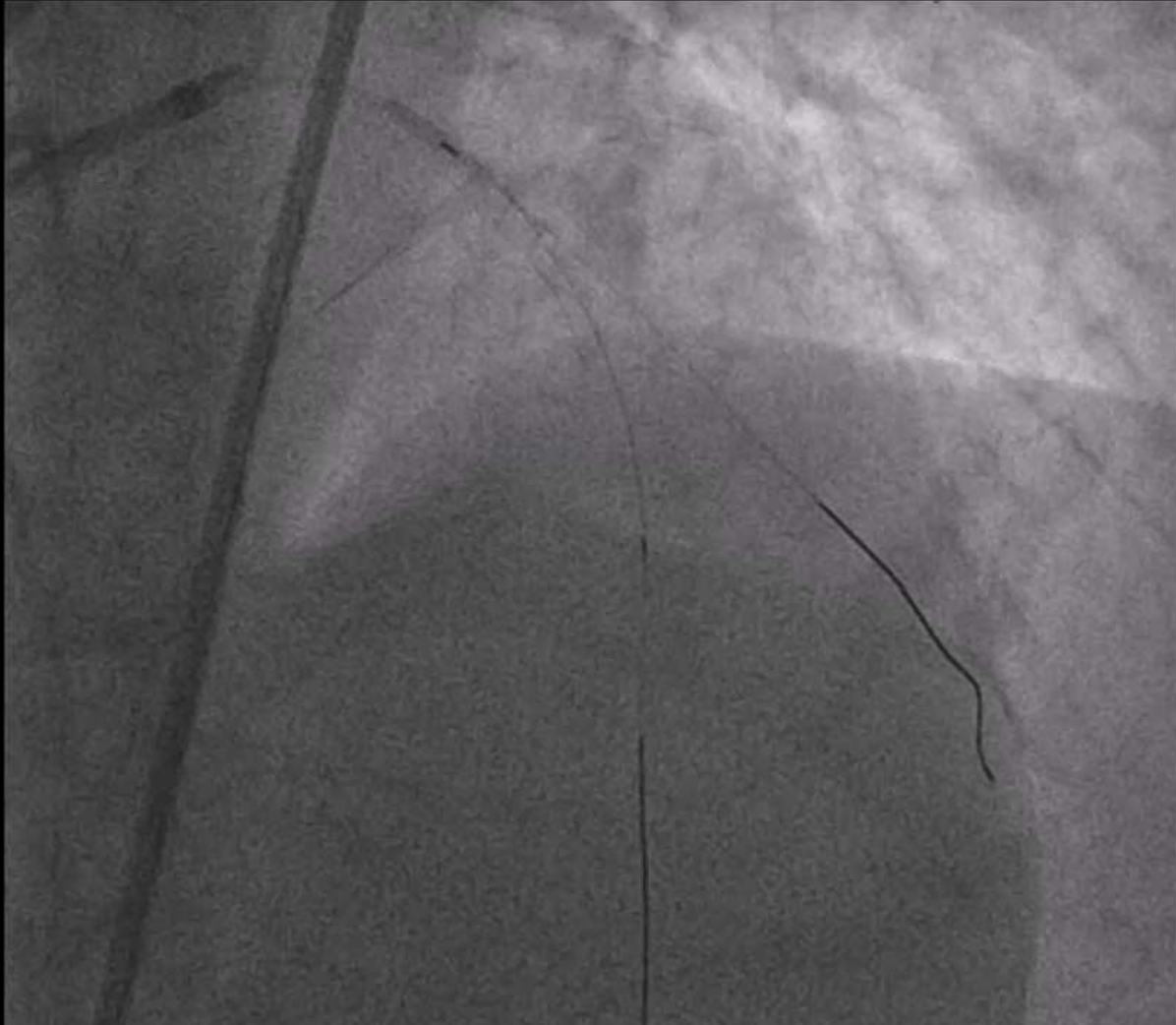




Case 4 : easy side branch crossing

▶ Inflated 1.5 balloon cross smoothly

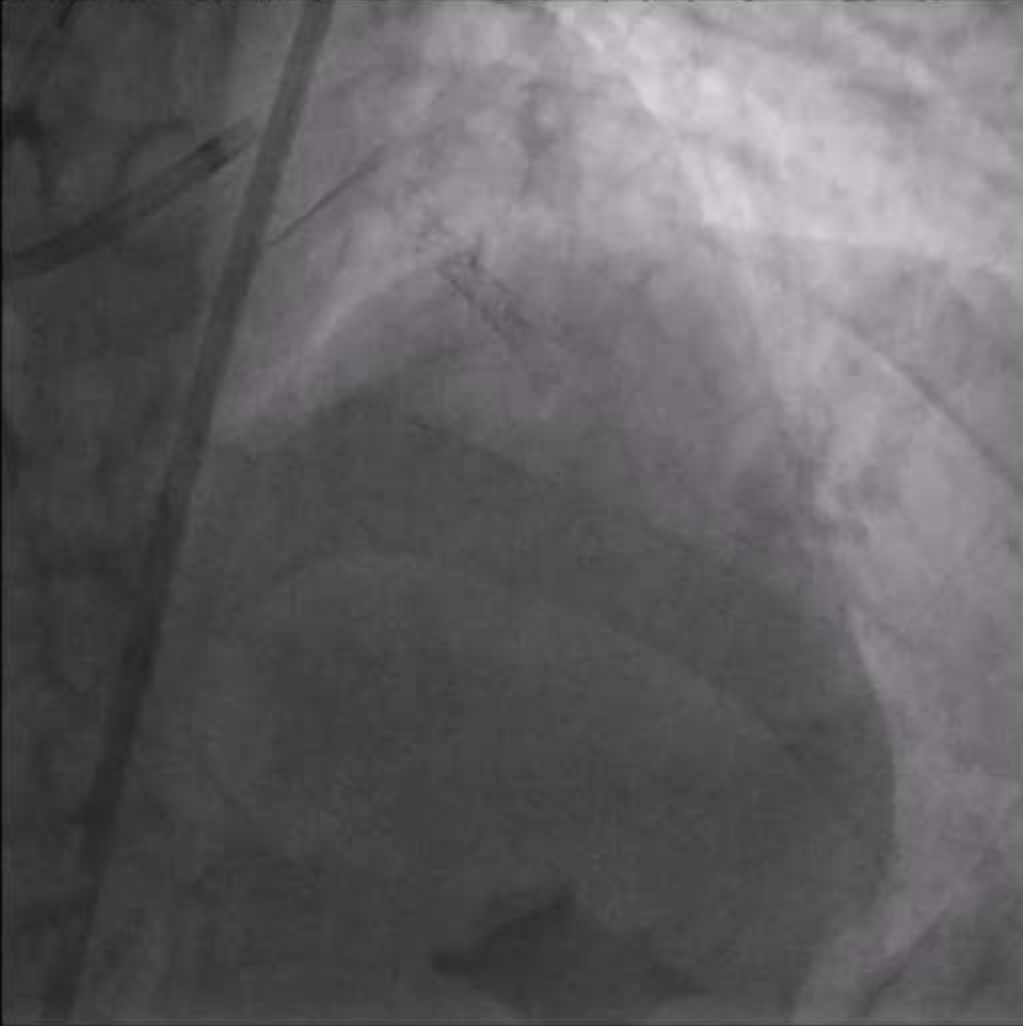
Lossy Compression - not intended for diagnosis



Case 4 : easy side branch crossing

▶ example of onyx in cullotte

Lossy Compression - not intended for diagnosis





Summary

- ▶ **General tests for onyx**
 - **LM, CTO, Bifurcation by crush /cullotte/provisional**
 - **Deliverability, Strength, Comfortability, Visibility**

- ▶ **Onyx 2.0 and 5.0**