

Snare Technique in Retrograde Approach

Hakujikai Memorial Hospital
Yasushi Asakura M.D.





Standard Technique in a Retrograde Approach

Revers CART



Retrograde Wire into GC



Corsair into GC



Externalization \bar{c} 300cm Wire



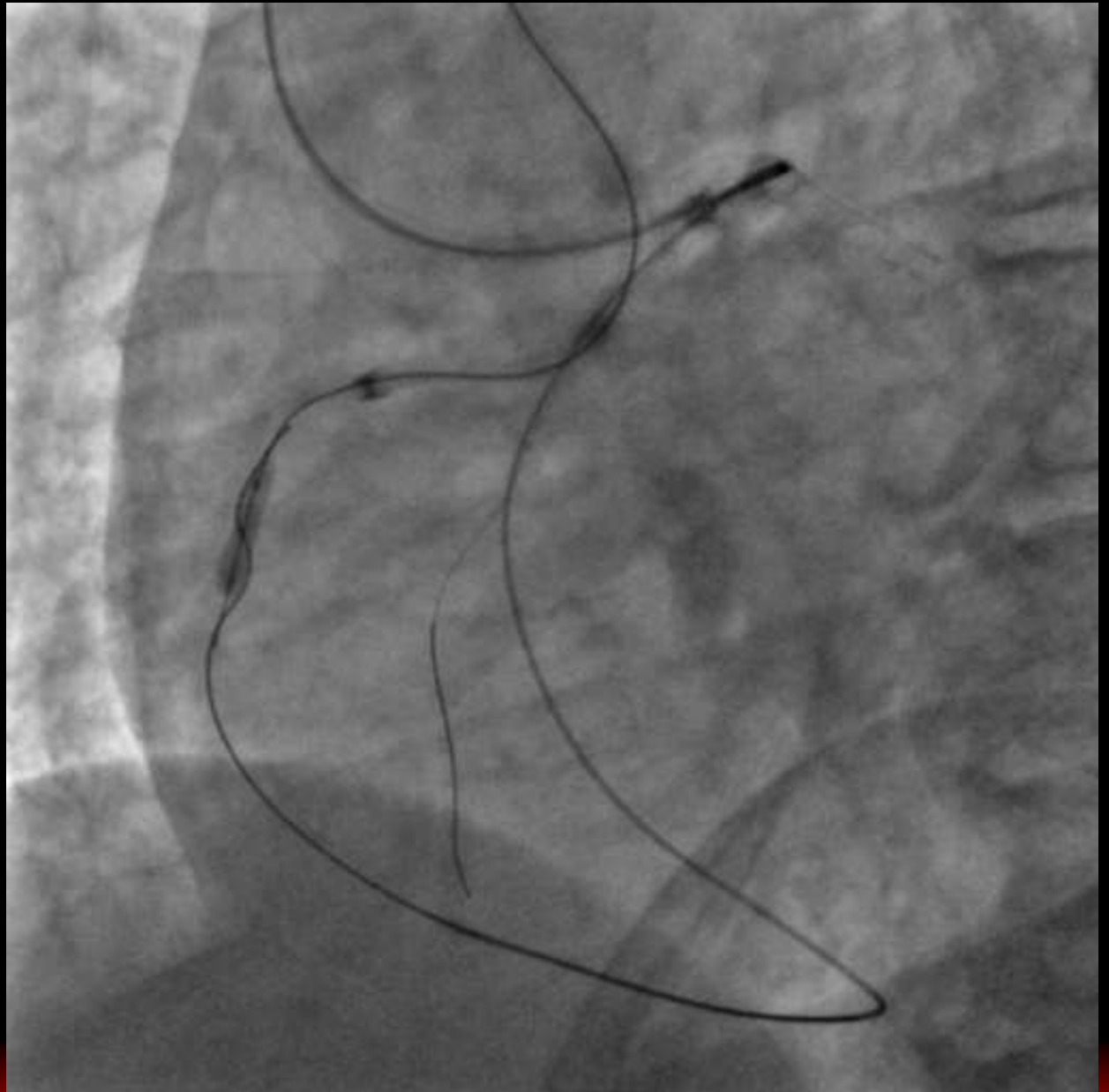
Guideline[®]

V2 Catheter



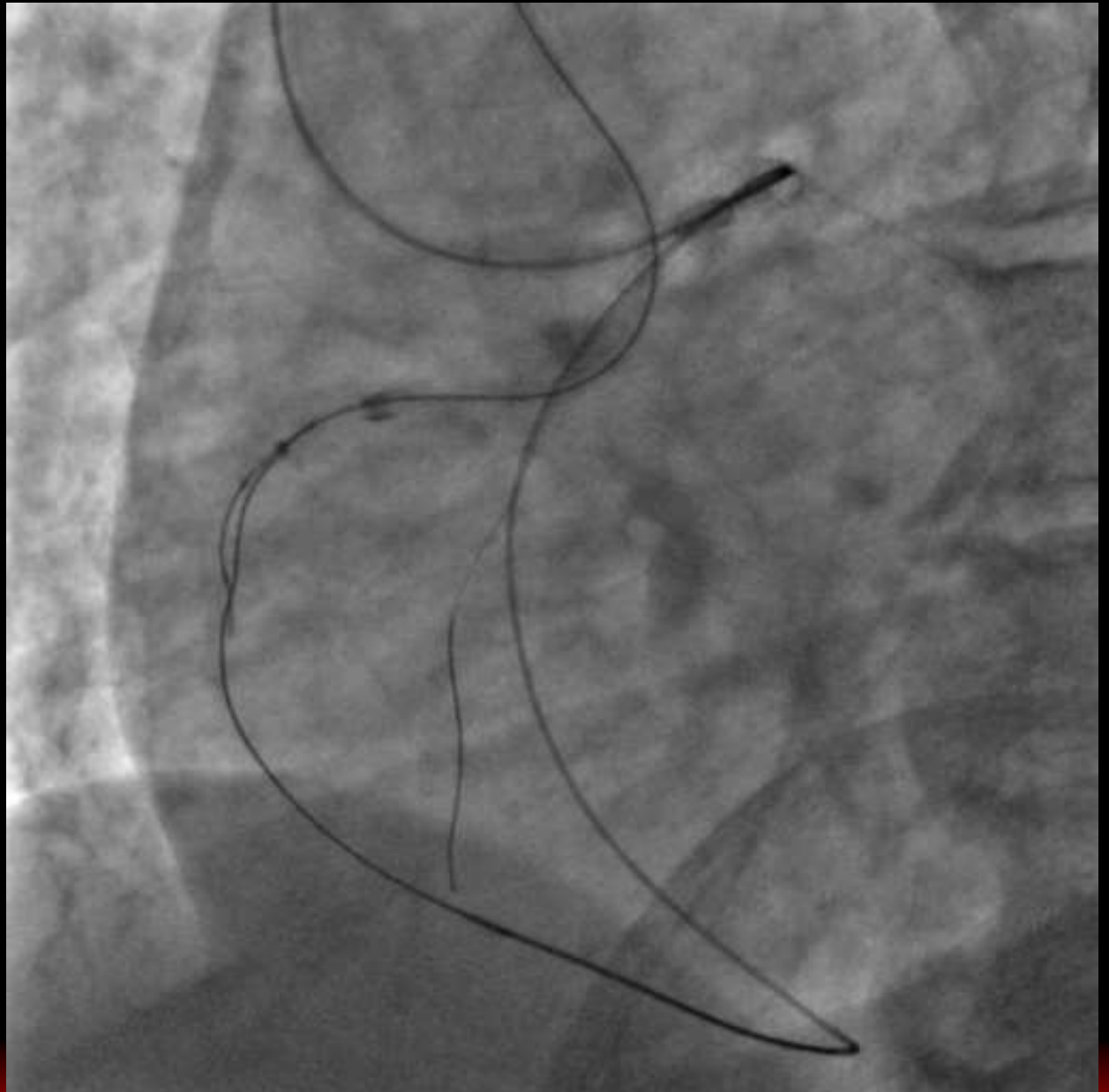


Guide Liner



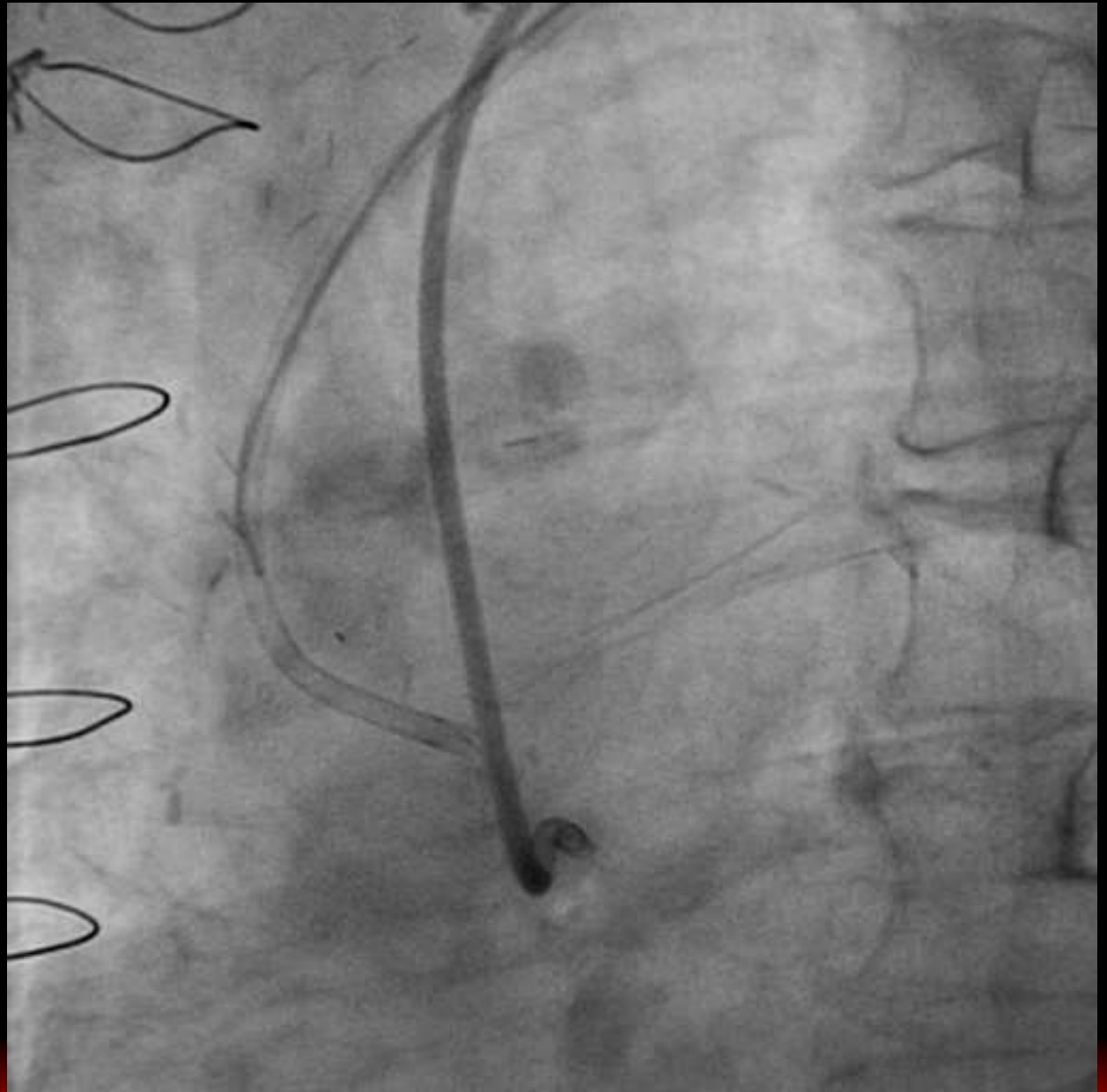


Guide Liner



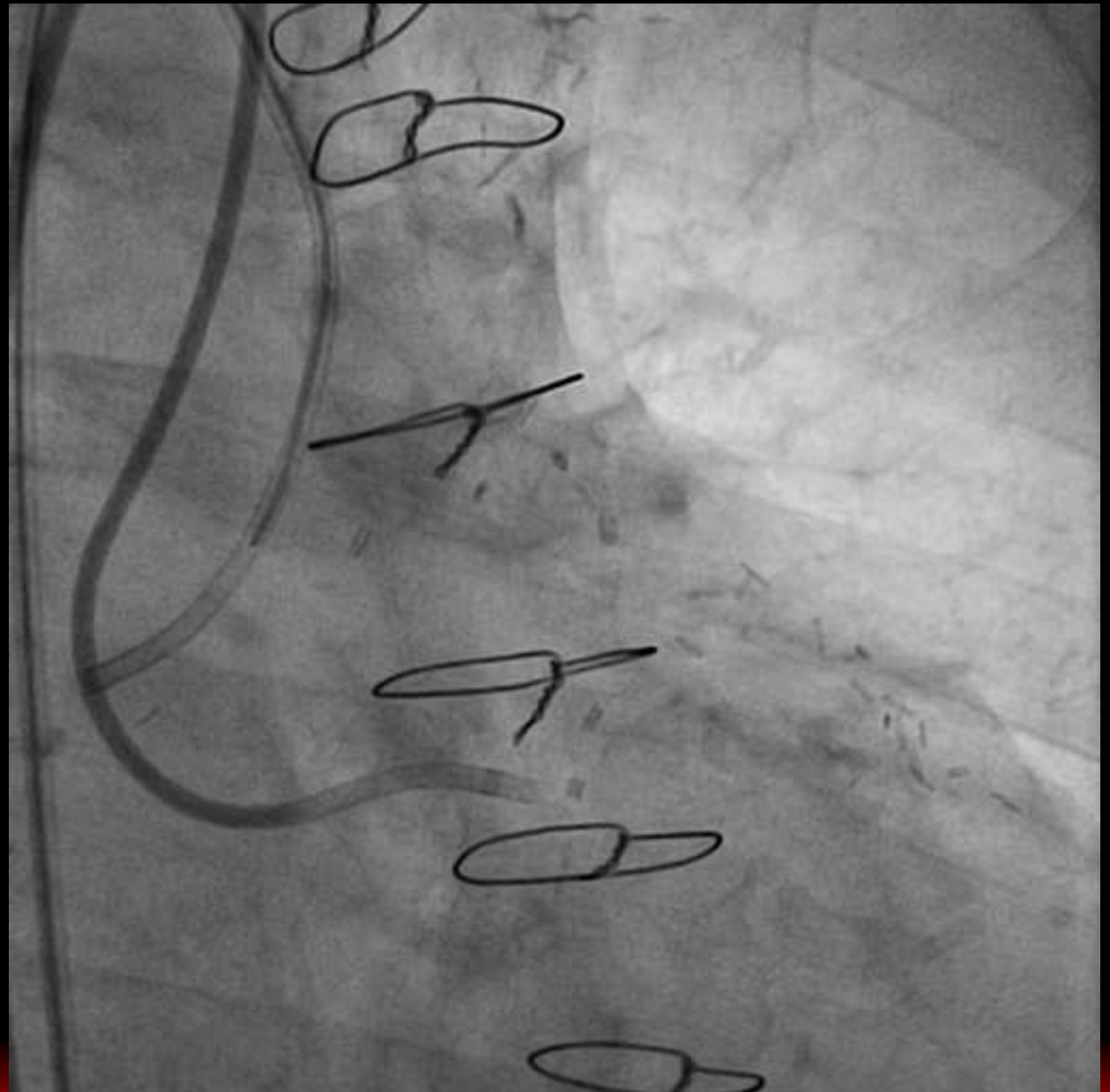


Case RCA





RAO



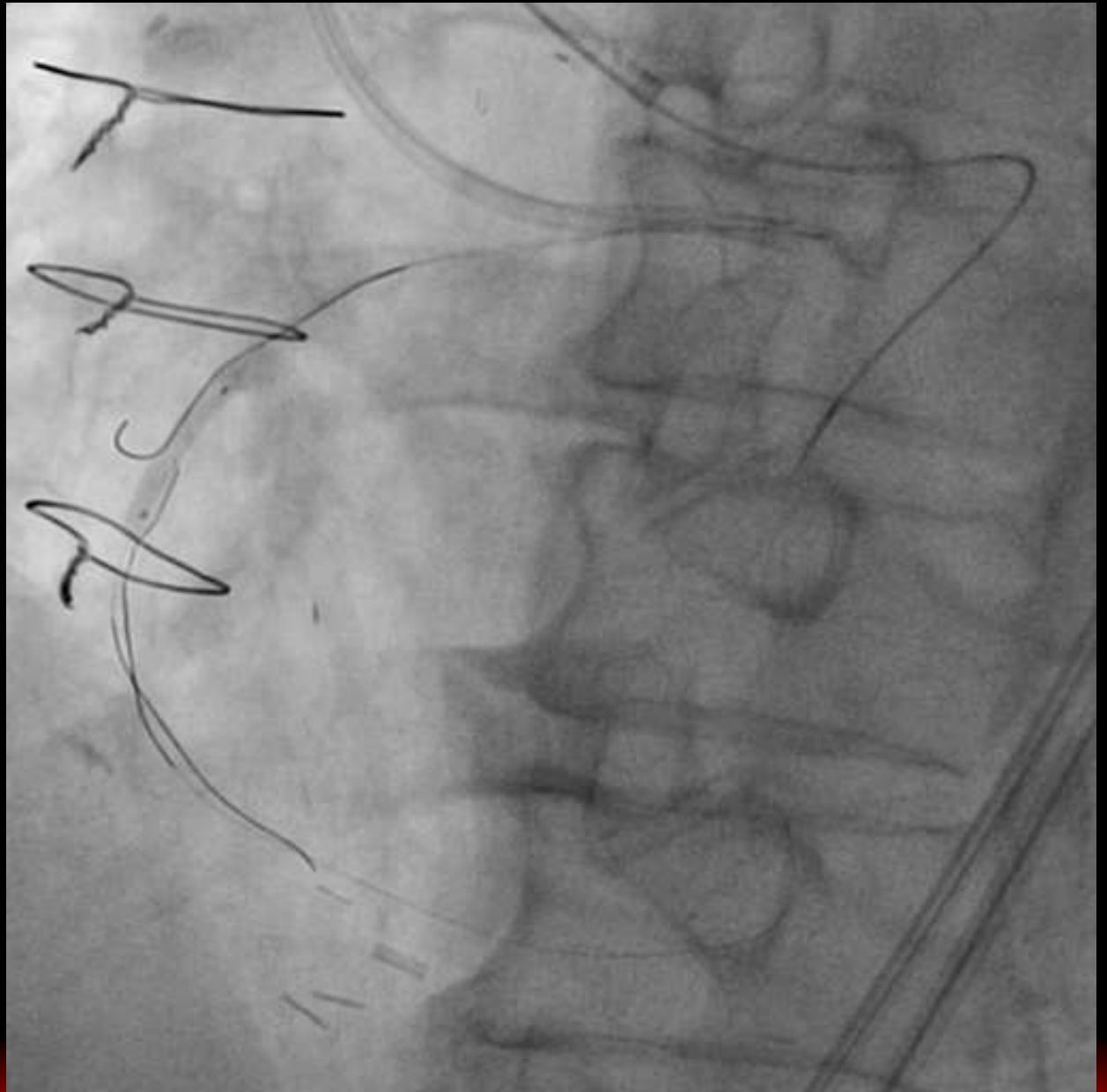


LCA



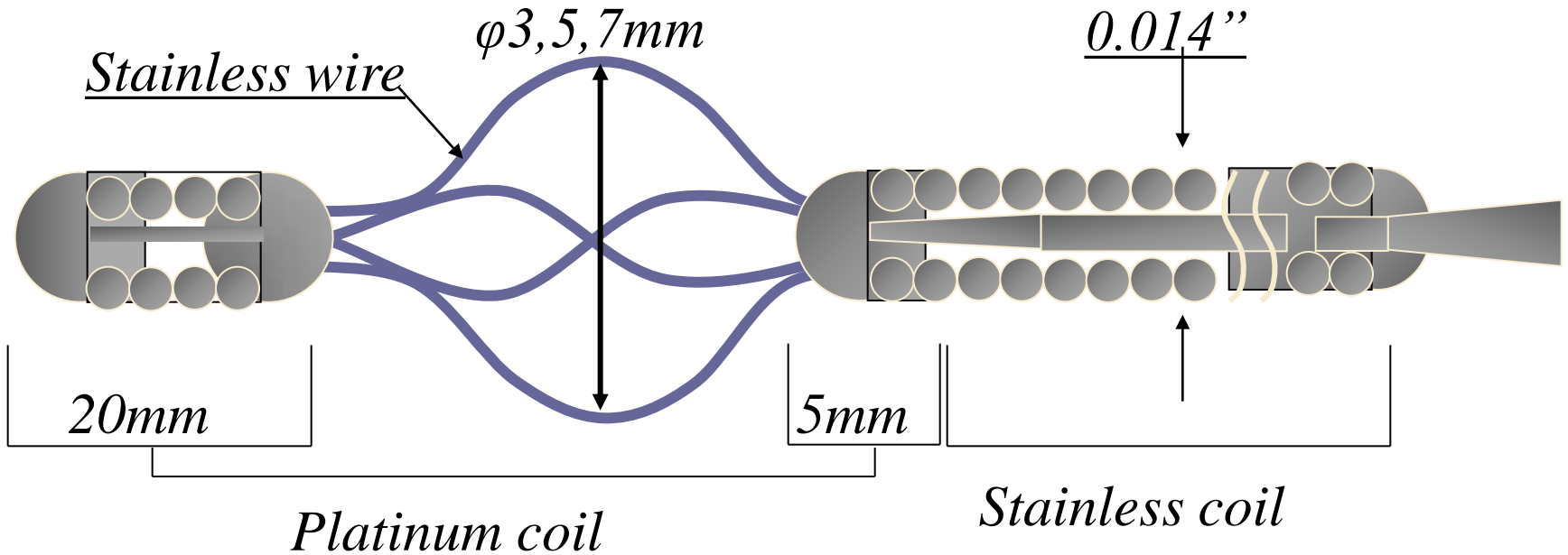
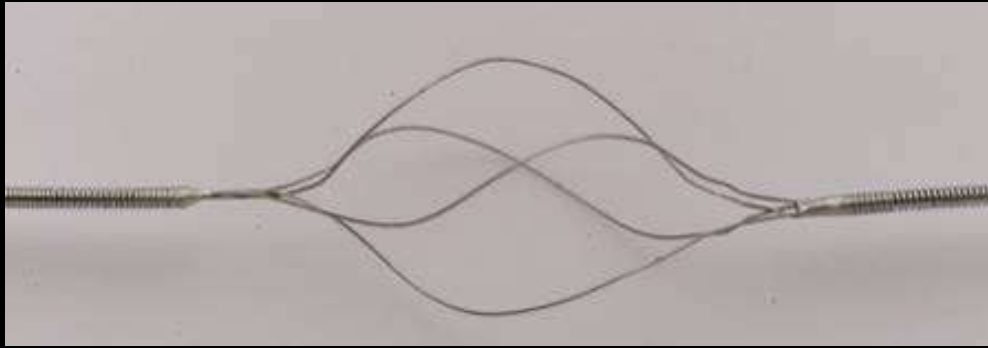


Reverse CART



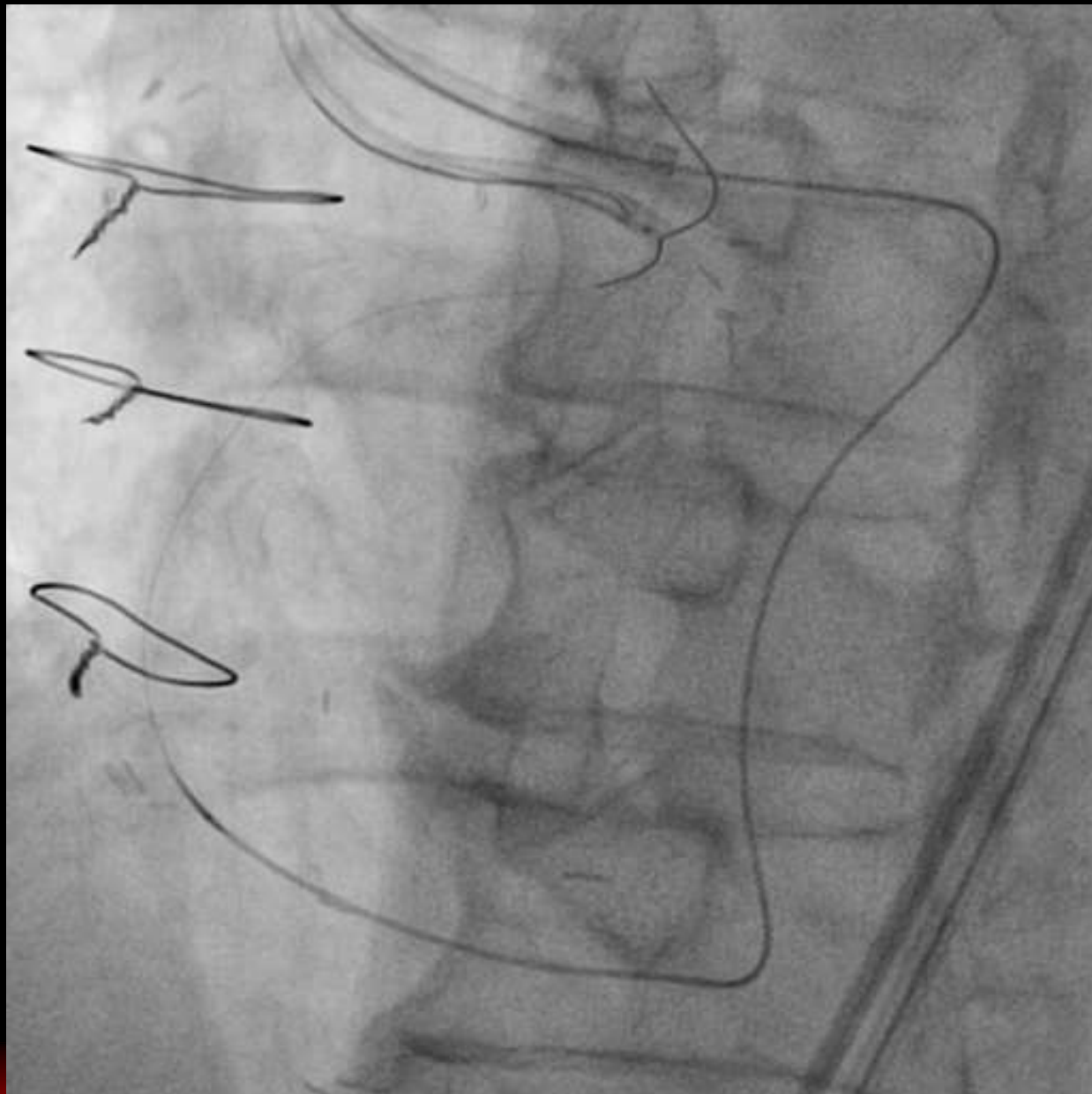


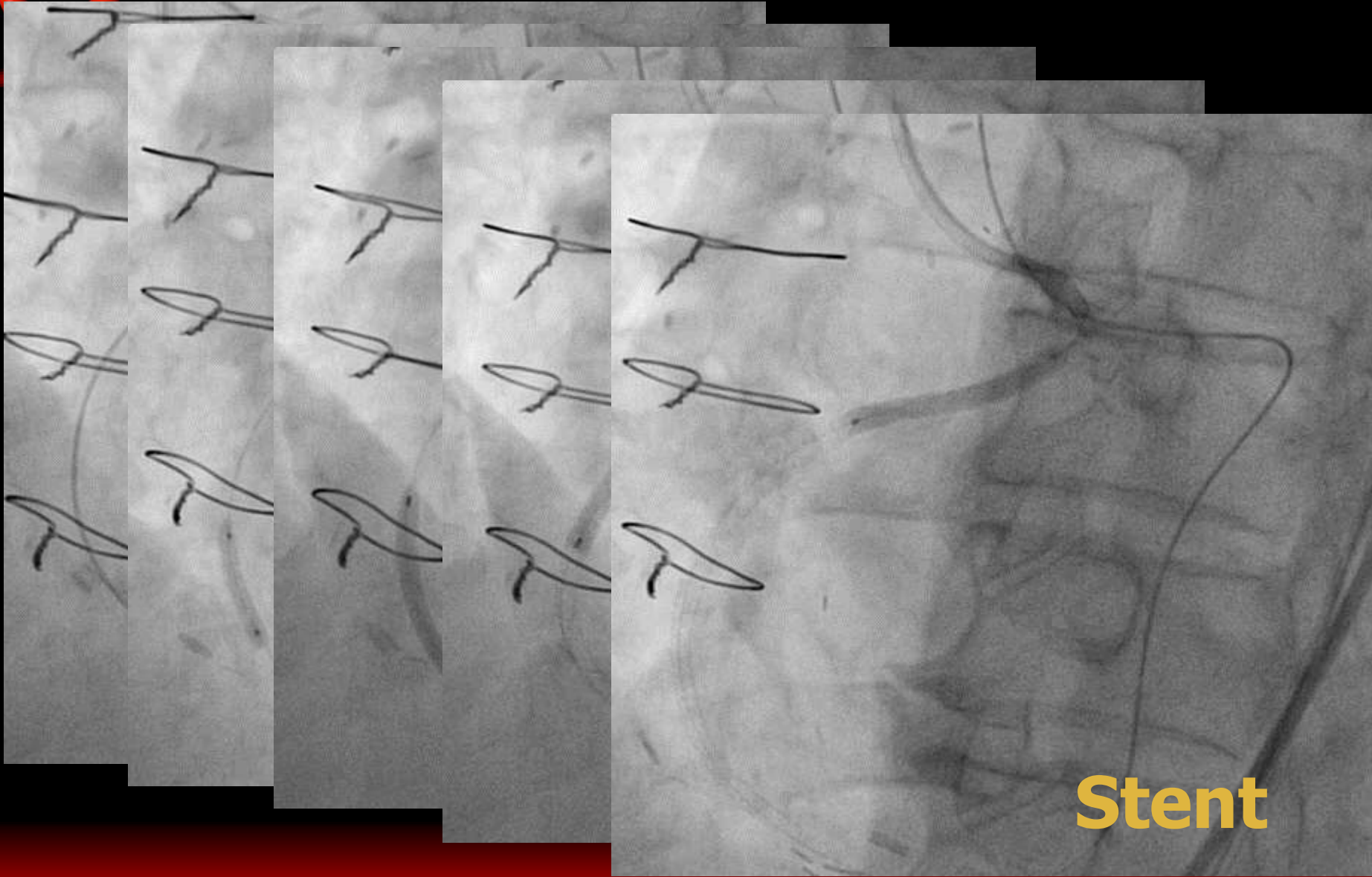
Soutenir-Microbasket





GW Capture c̄ Snare

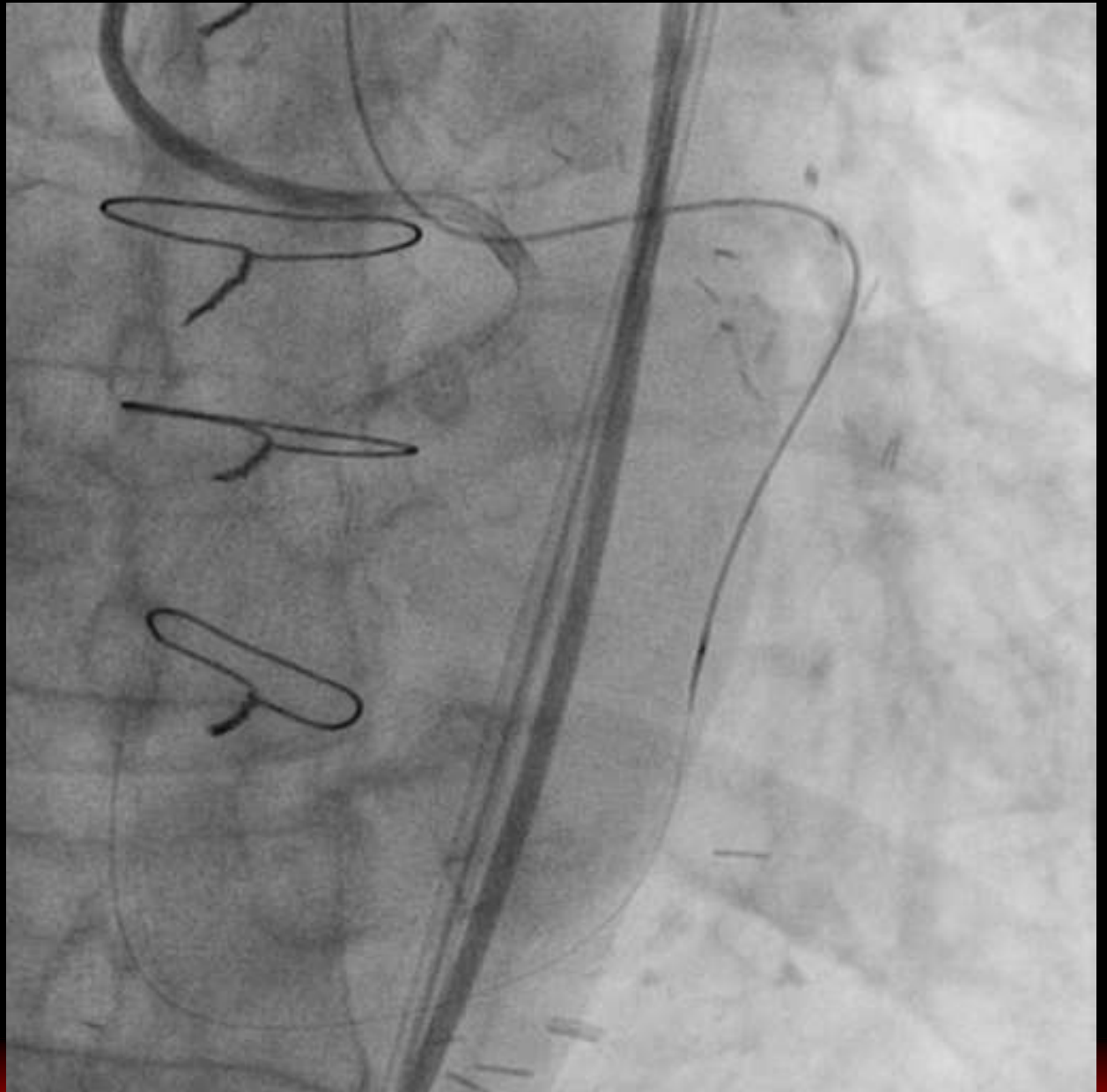




Stent



Final





Case





RAO Cranial



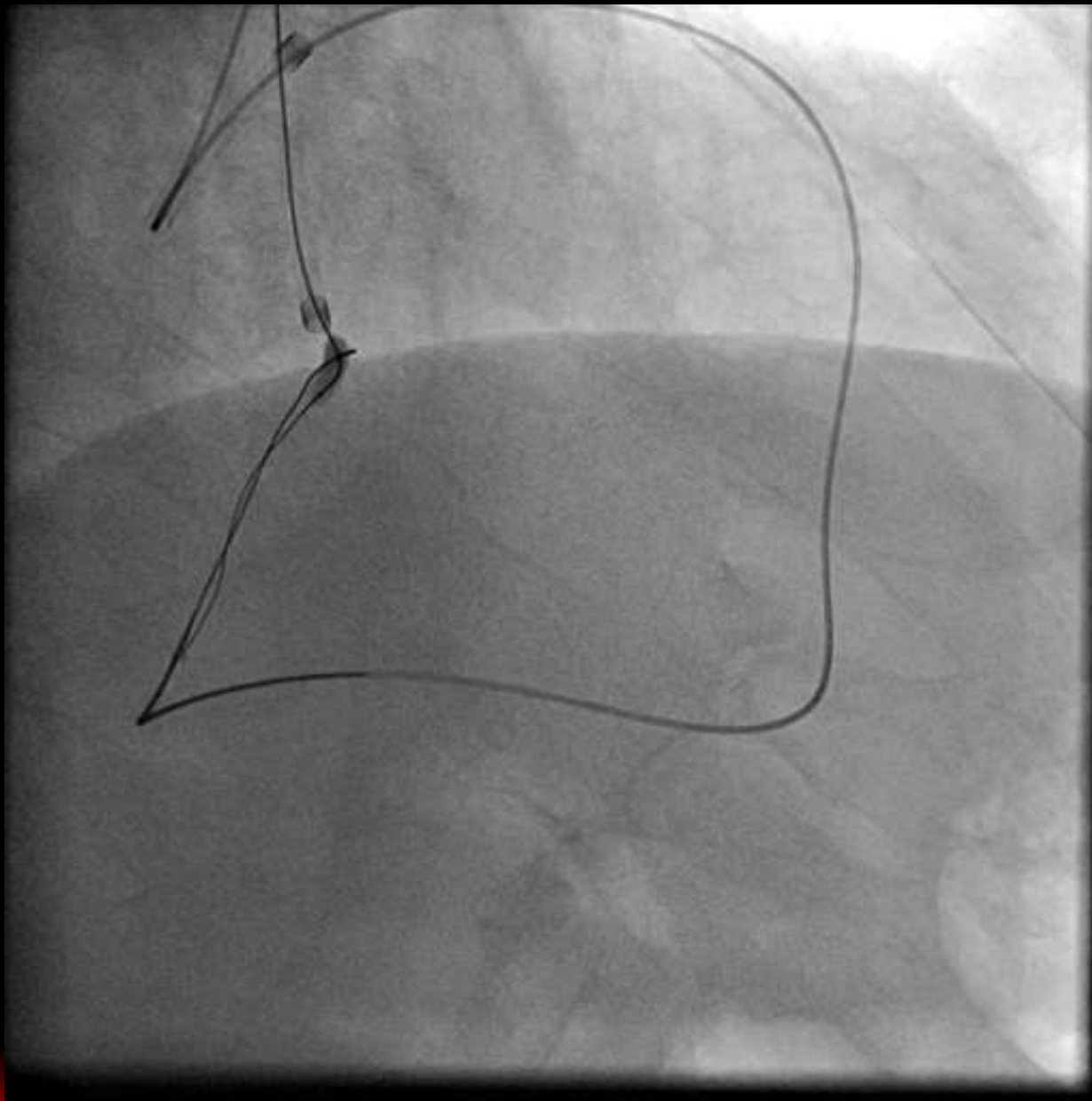


Septal



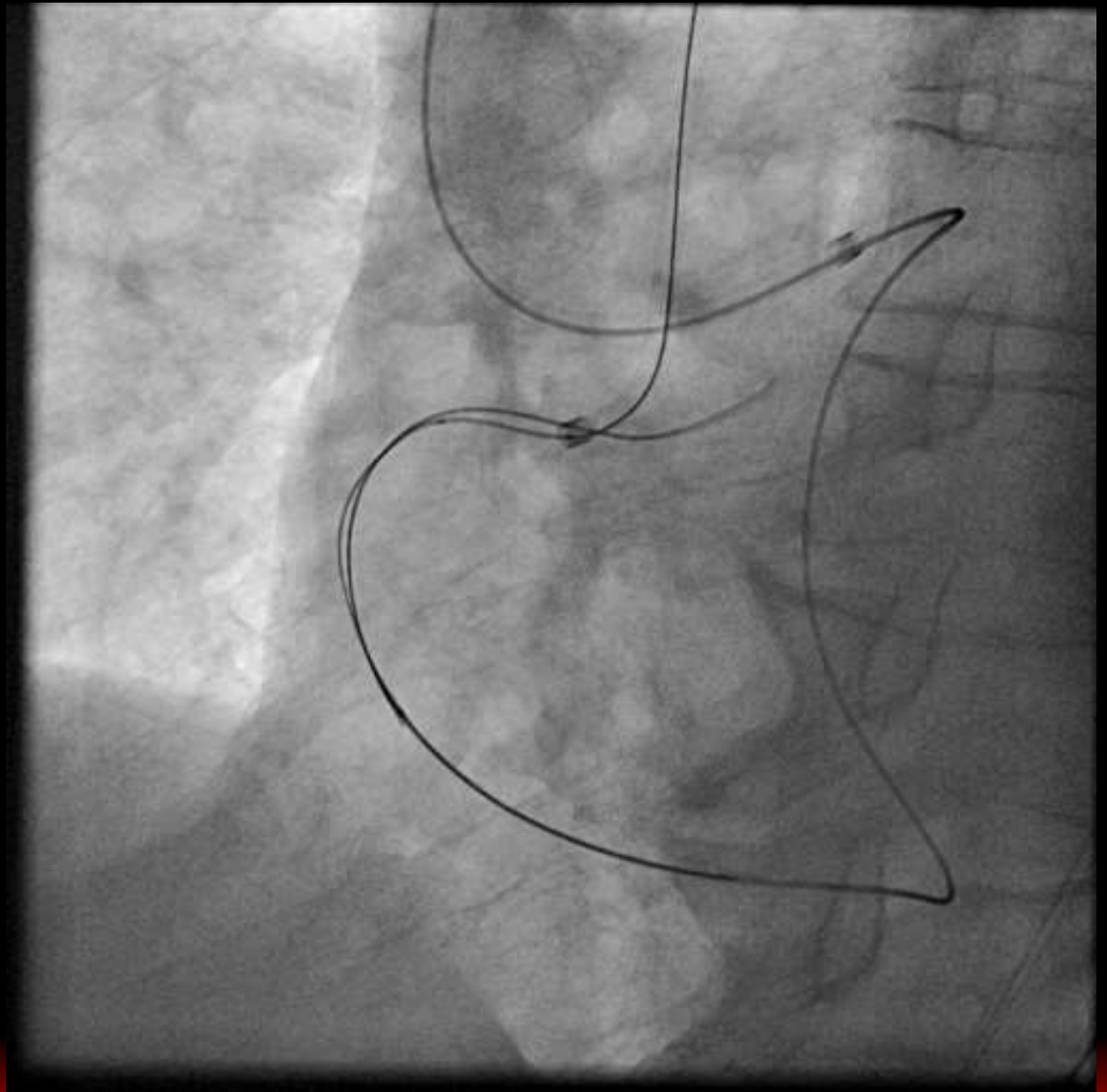


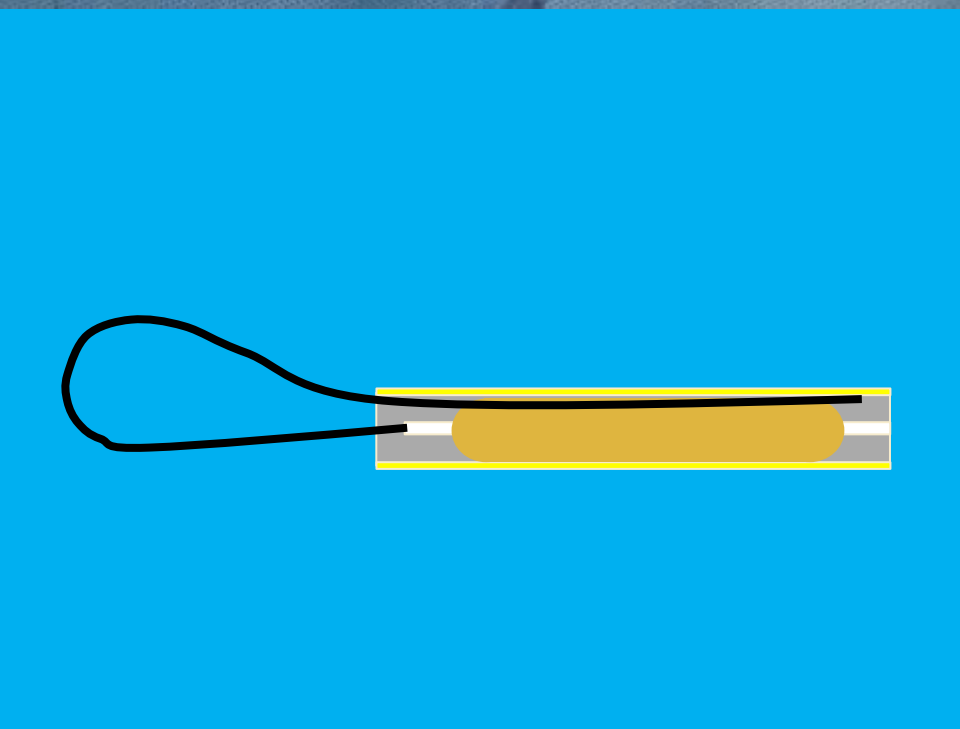
Reverse CART





Successful Wiring

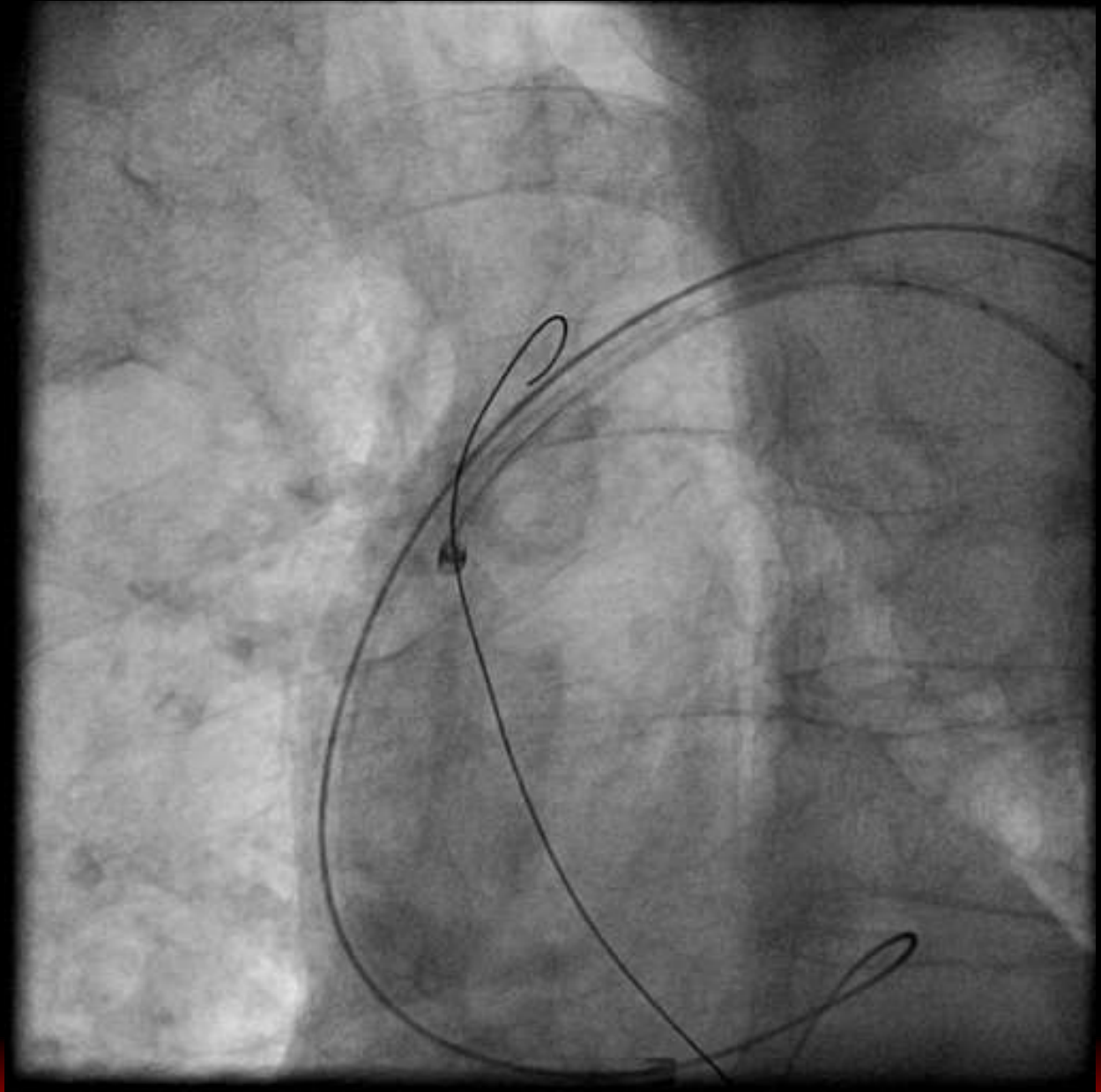






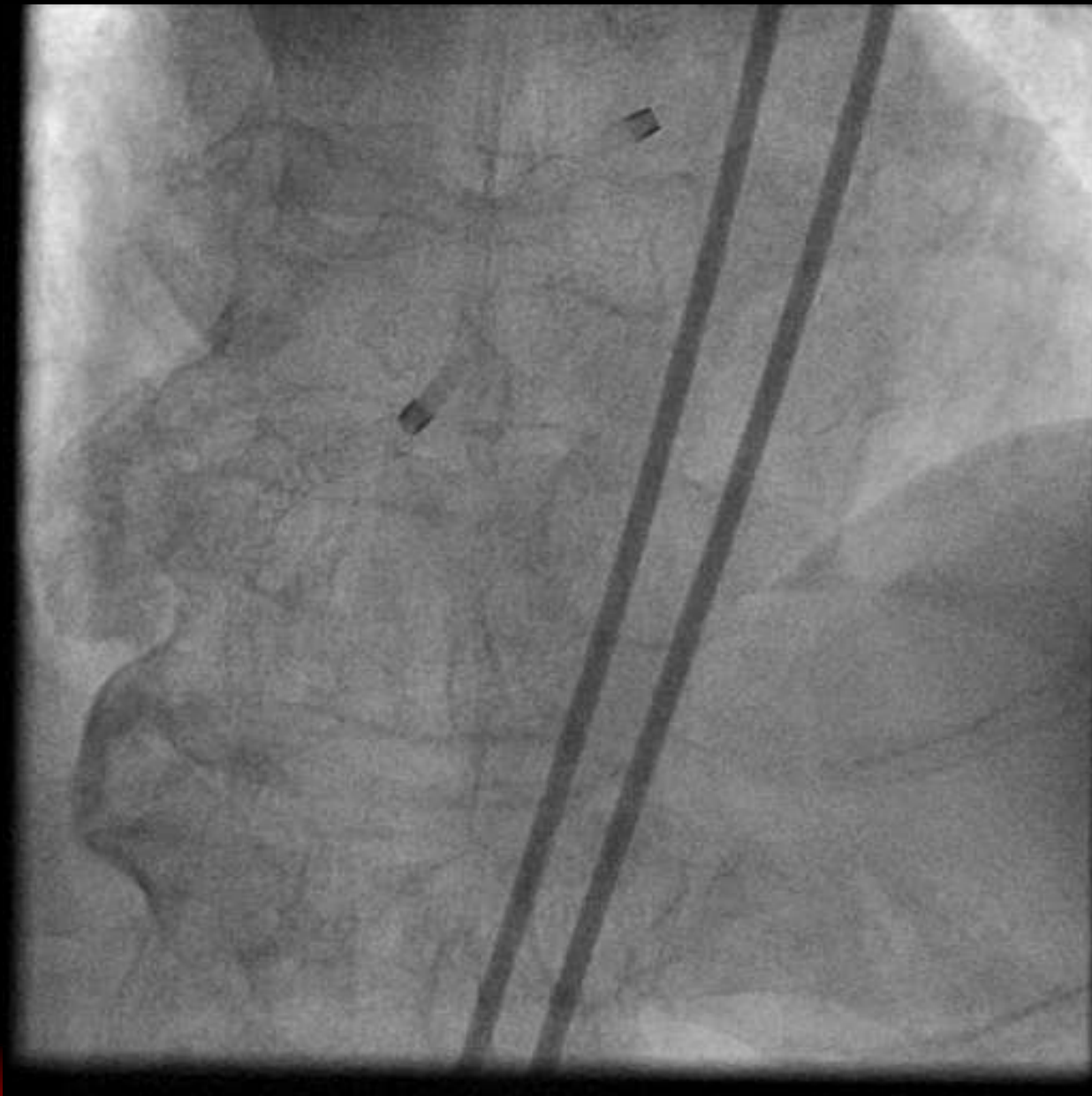


Snare



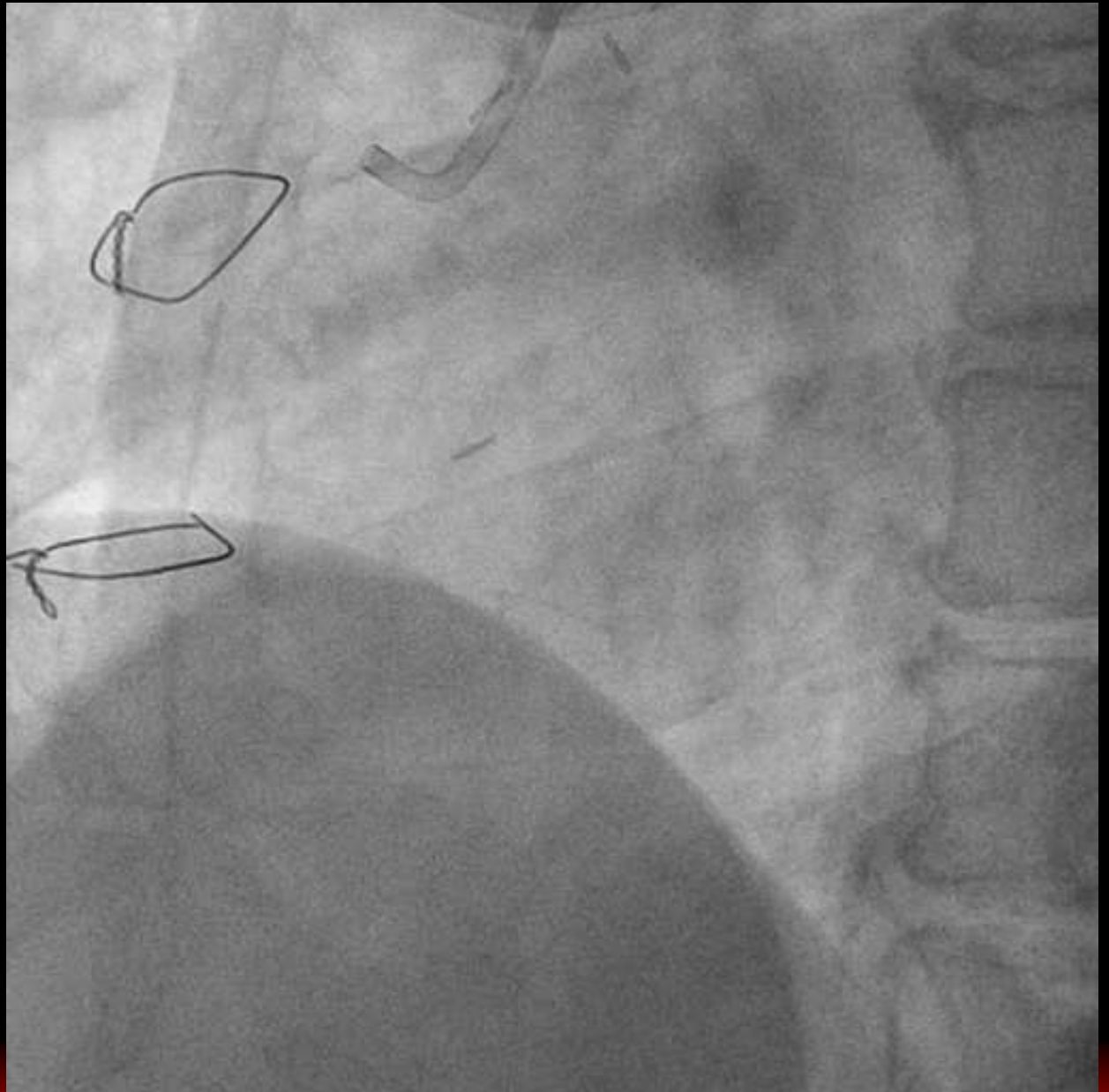


Final



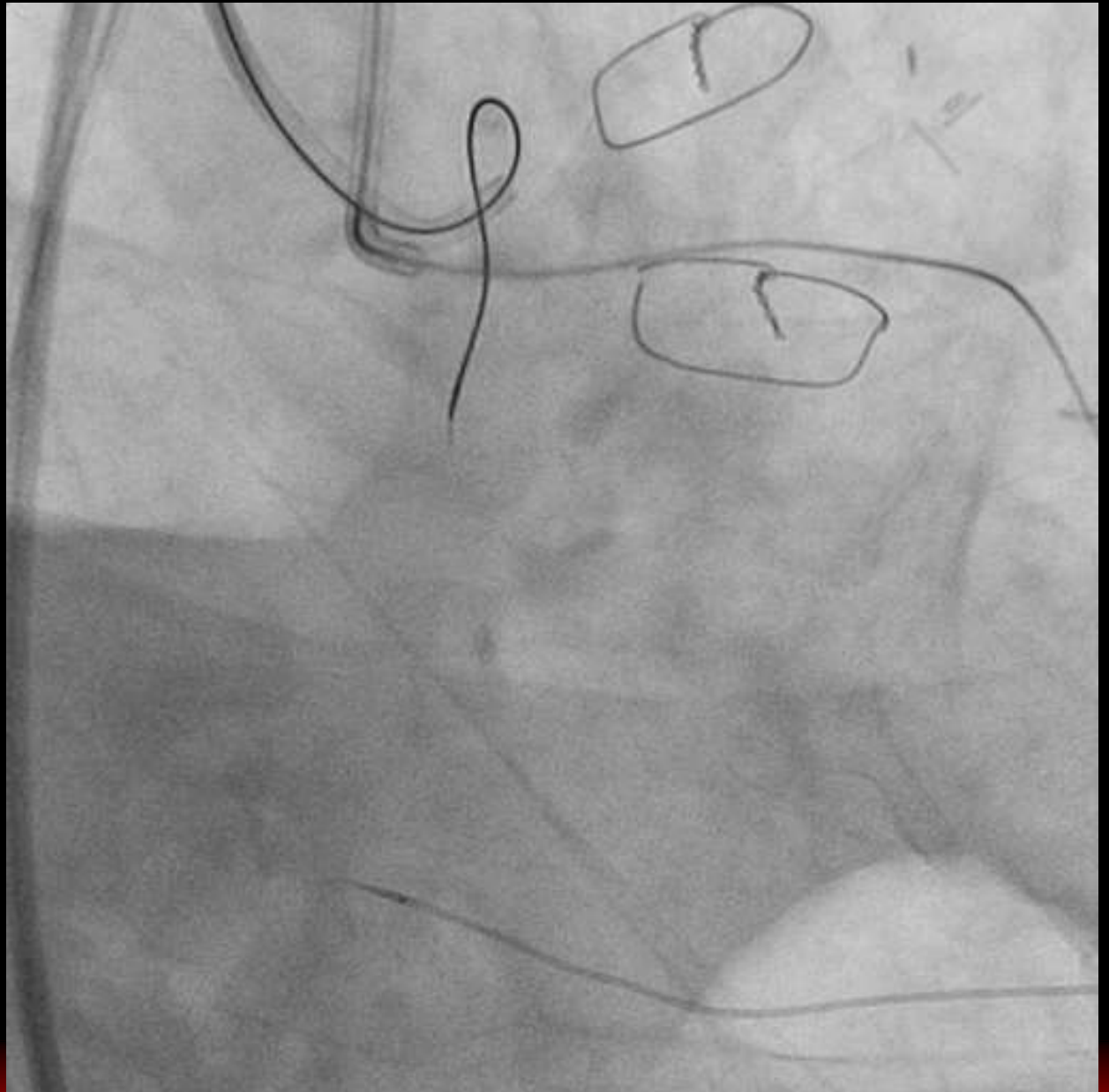


Case



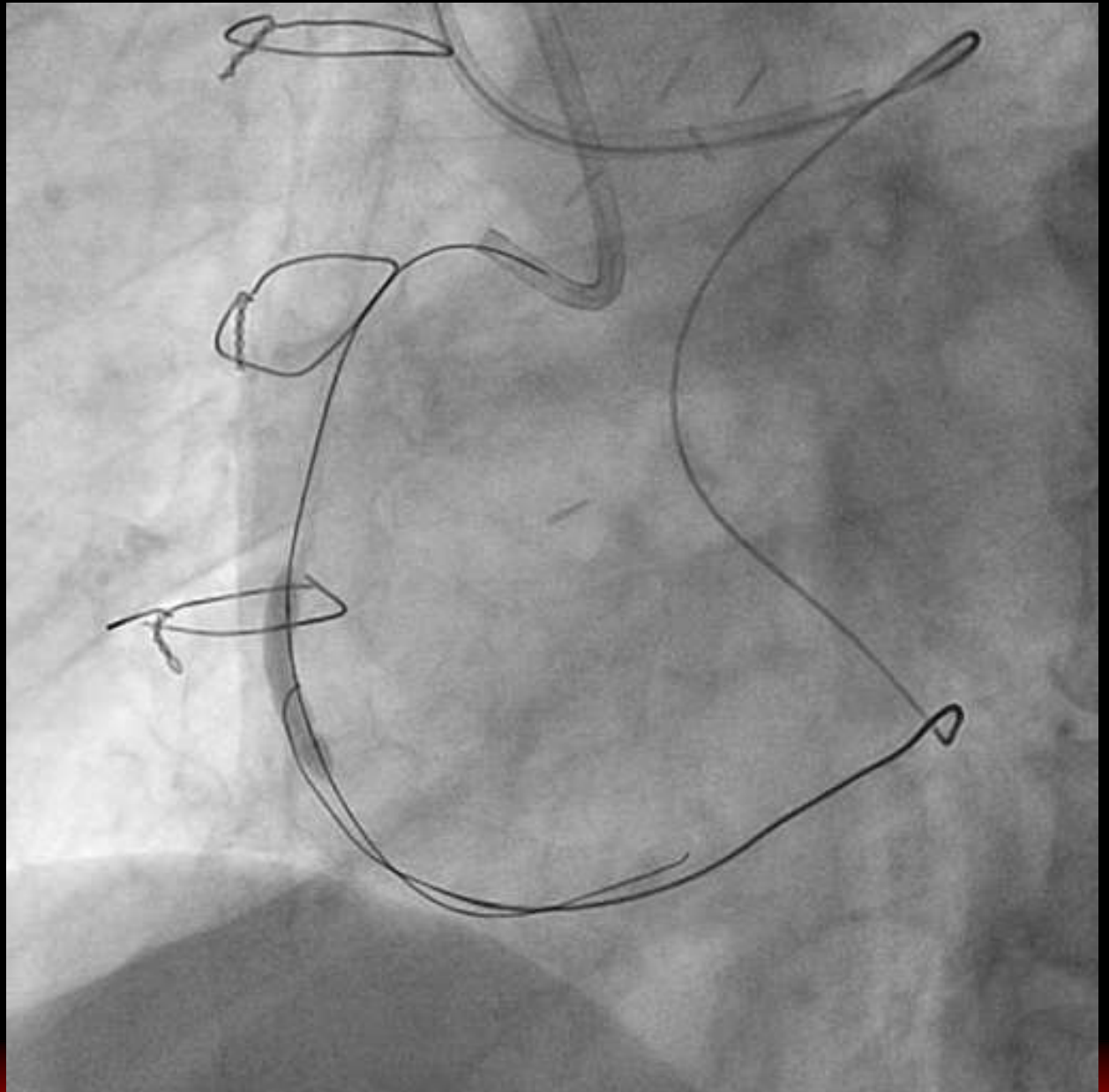


Corsair





Reverse CART

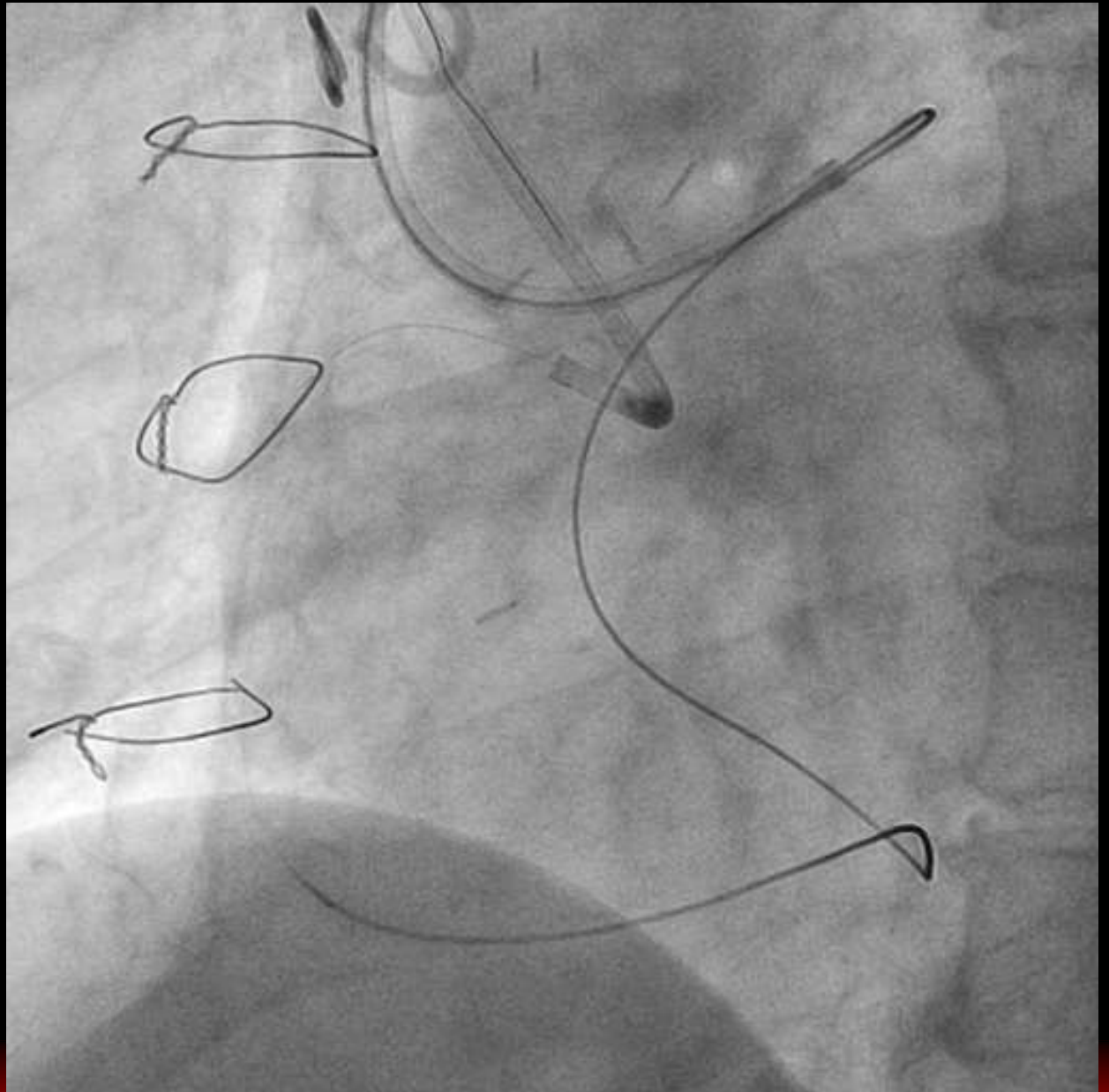




**Successful
Wiring**

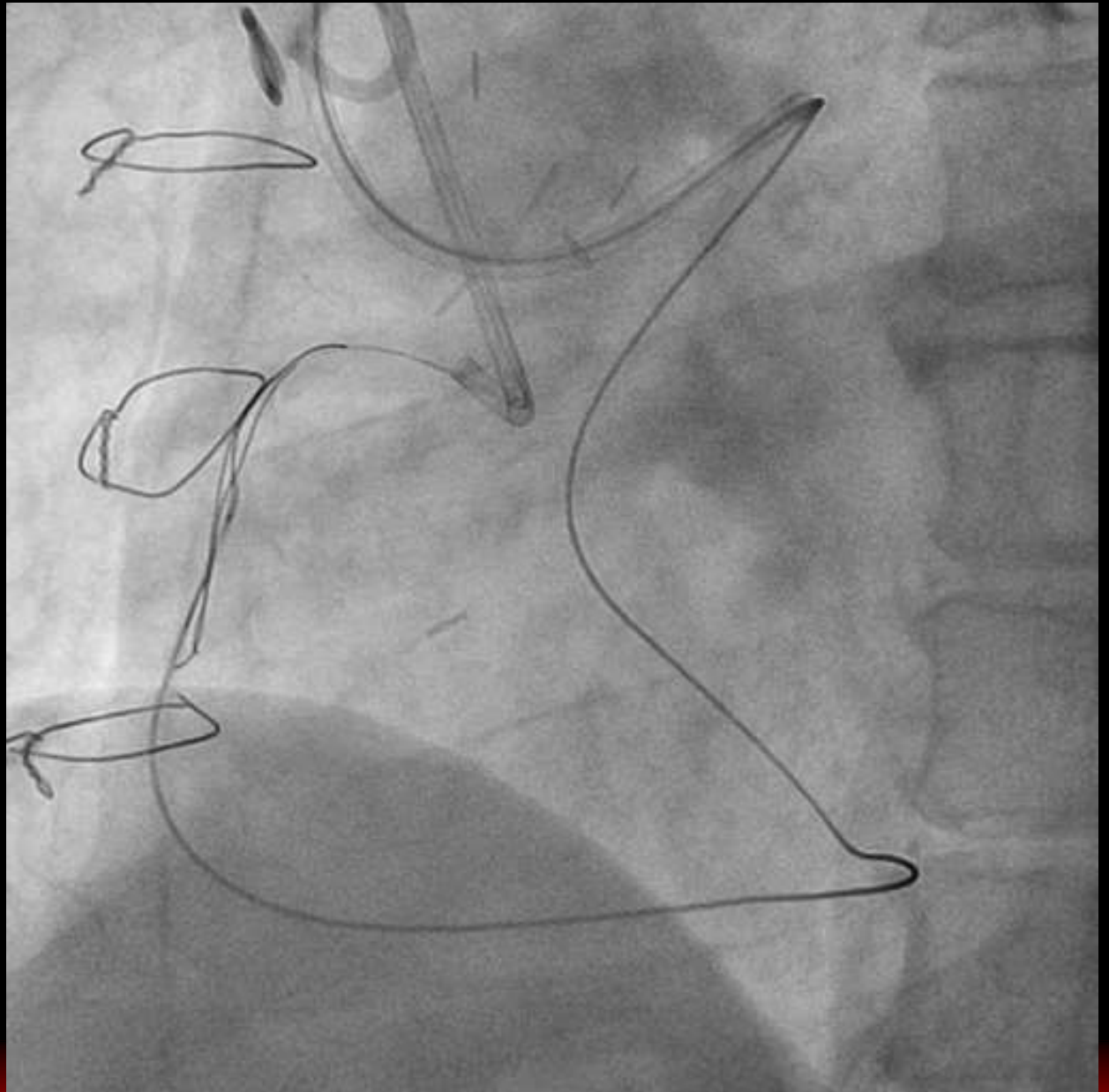


**Blocked
Corsair**



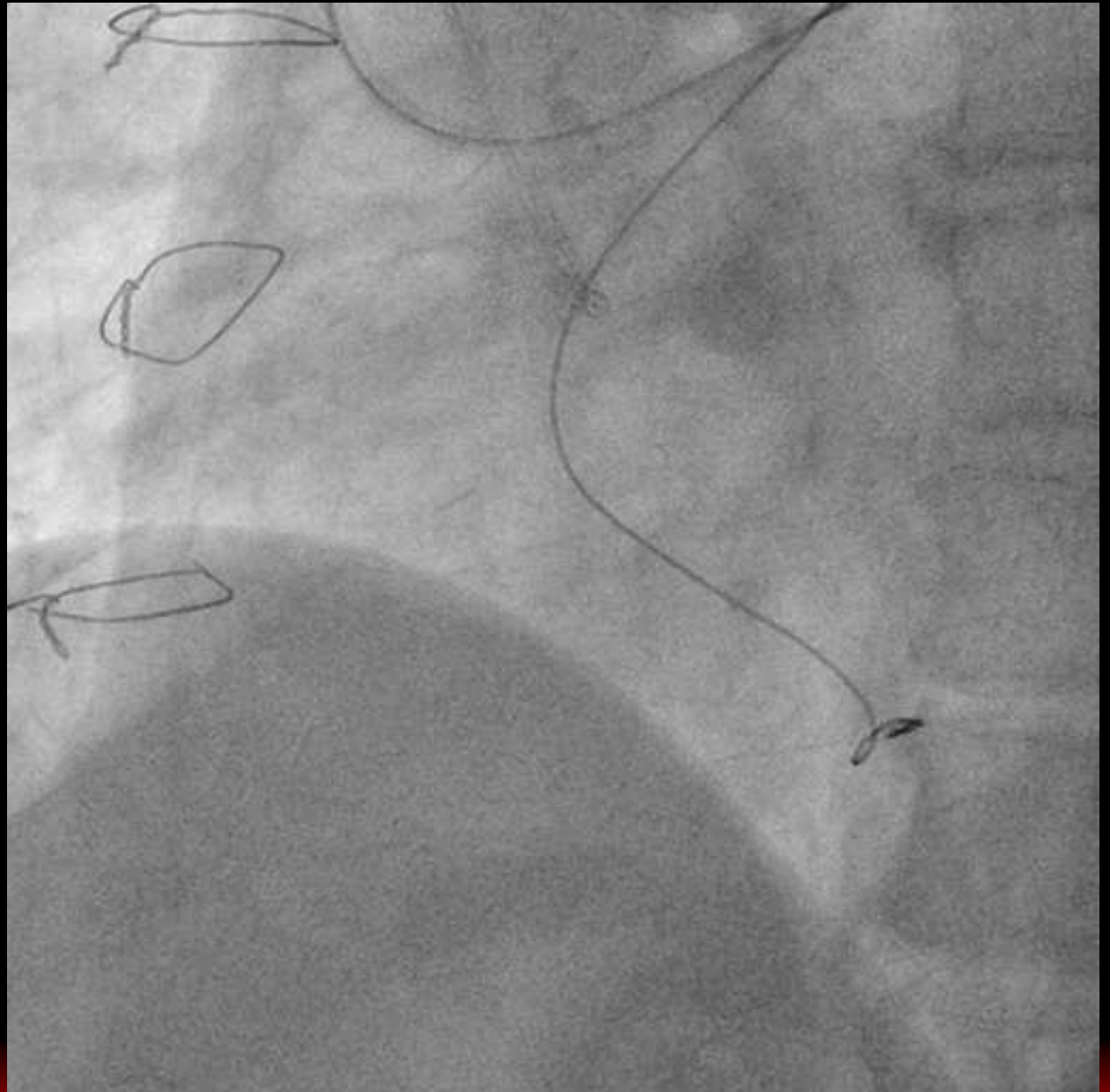


Snare



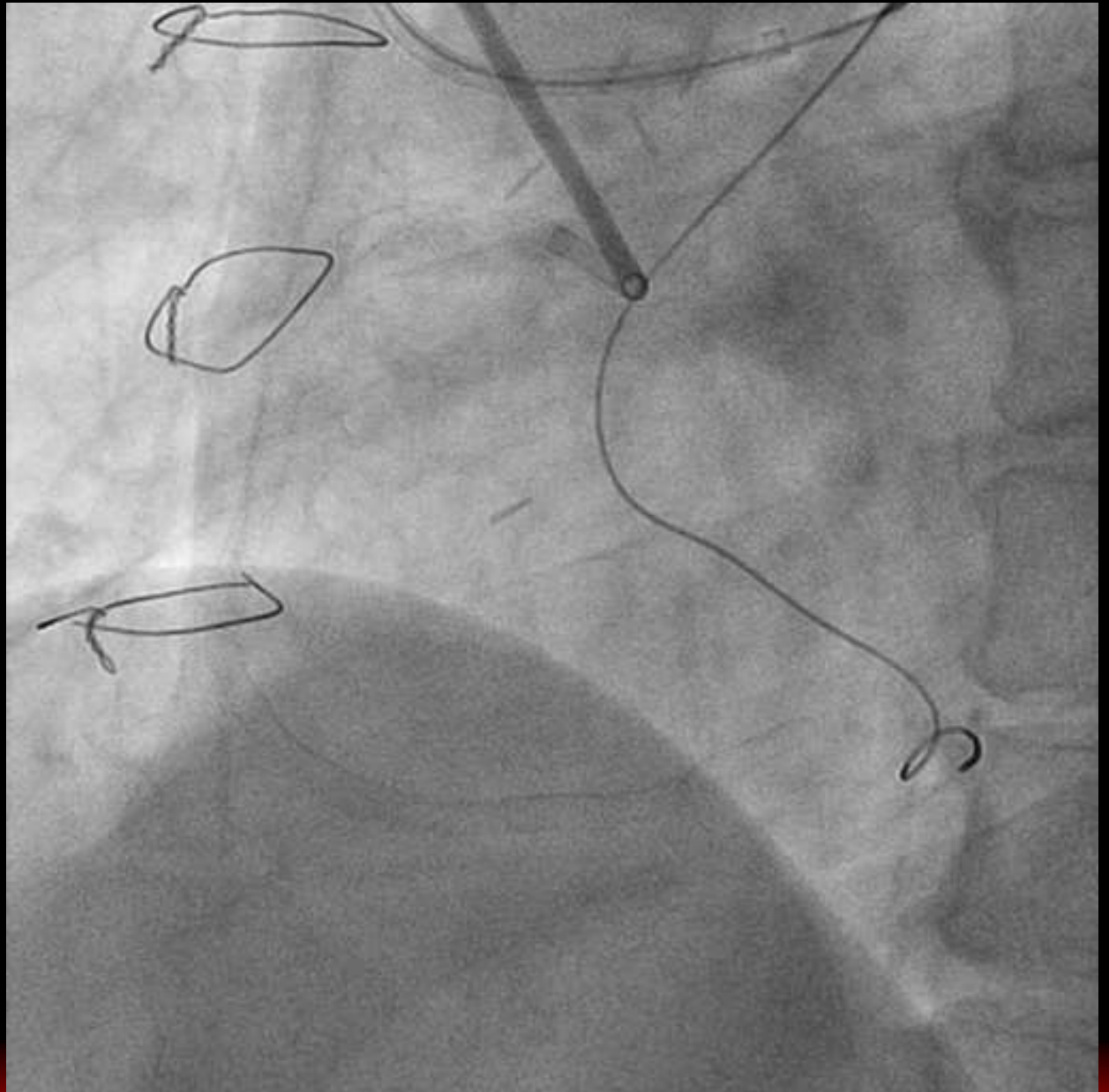


Corsair





Final





Summary

- 1. We sometimes need snare technique in order to catch retrograde or antegrade wires.**
- 2. We should know appropriate application of snare technique.**
- 3. Soutenir CV is feasible in coronary artery. Hand made snare is helpful in aorta.**