

BVS IN OCT

INTRAMURAL HEMATOMA

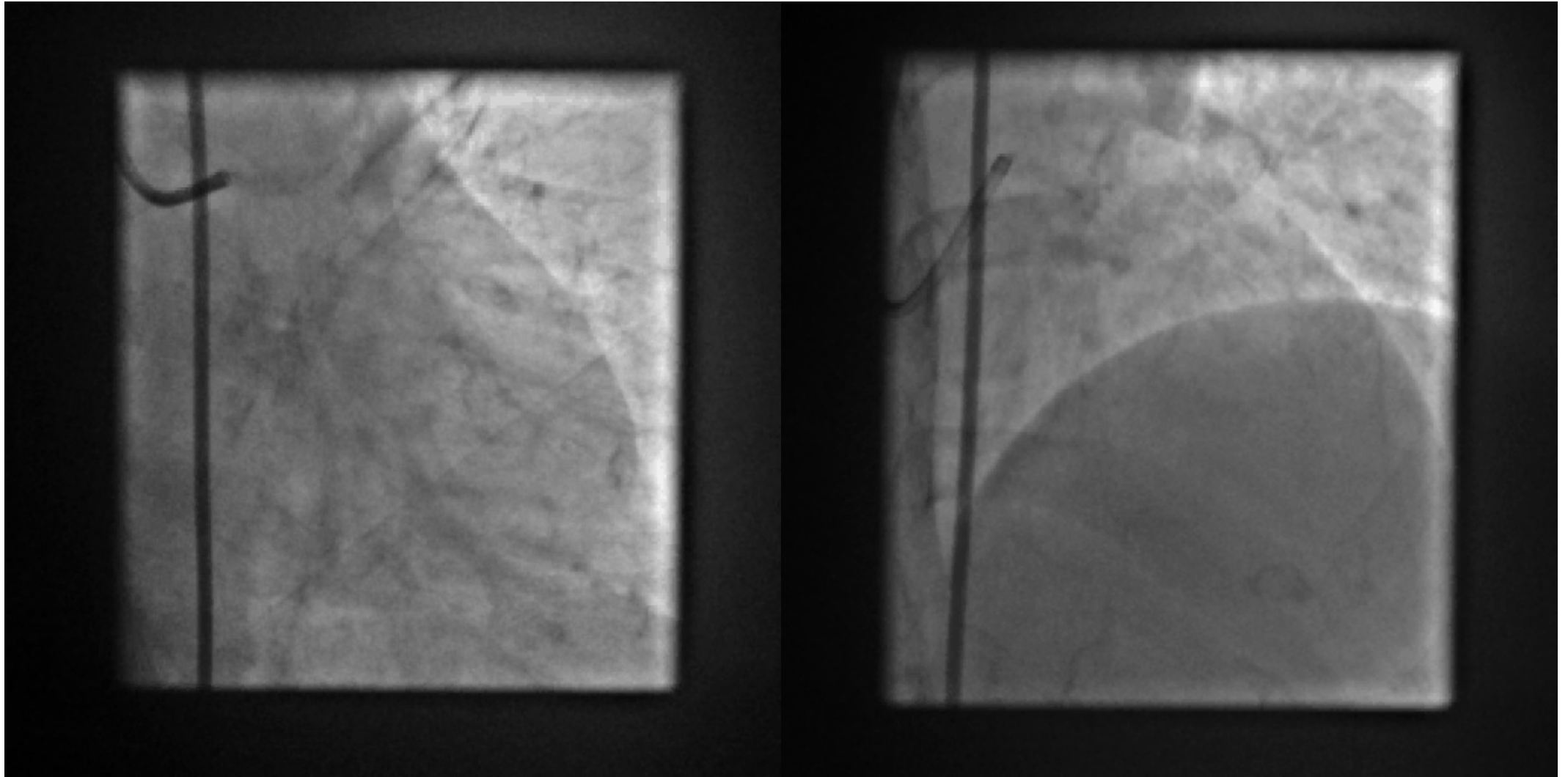


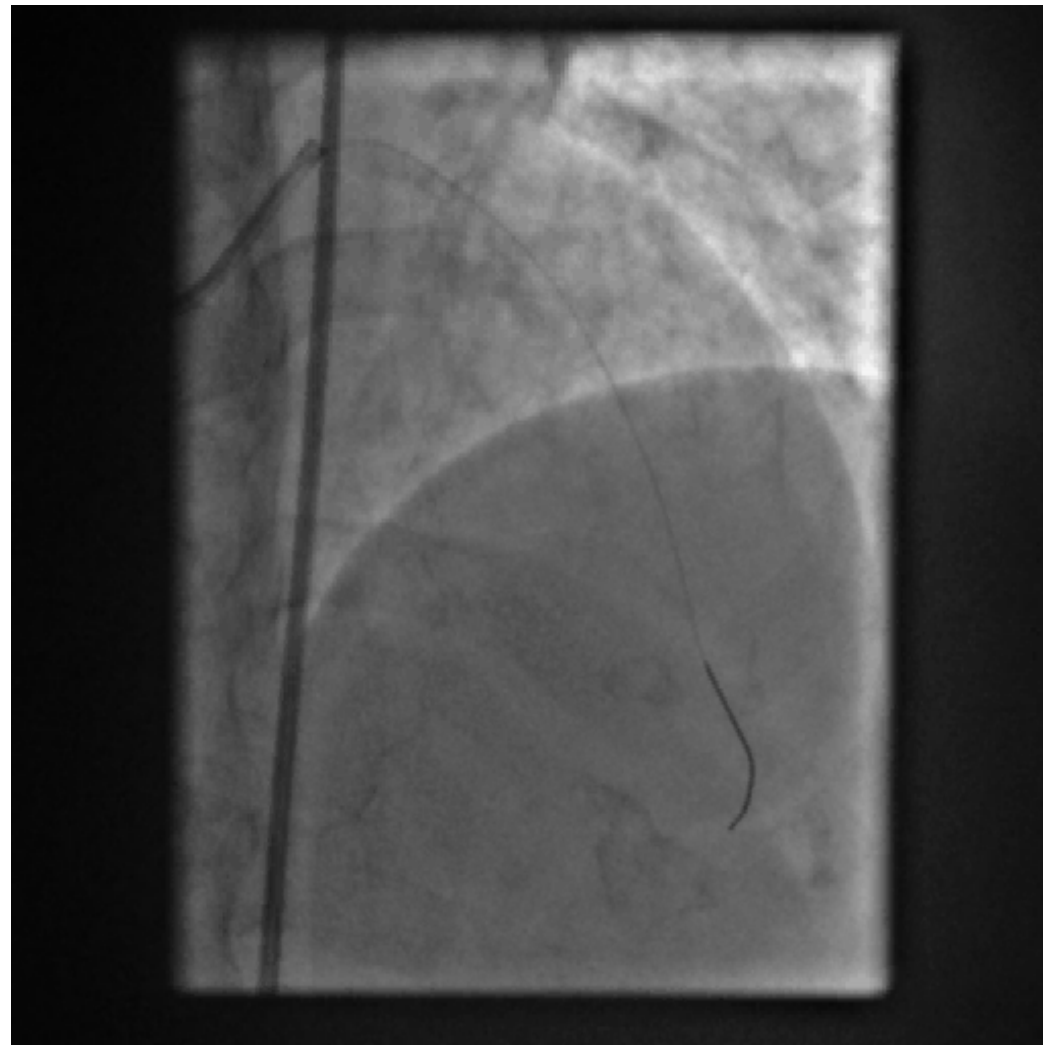
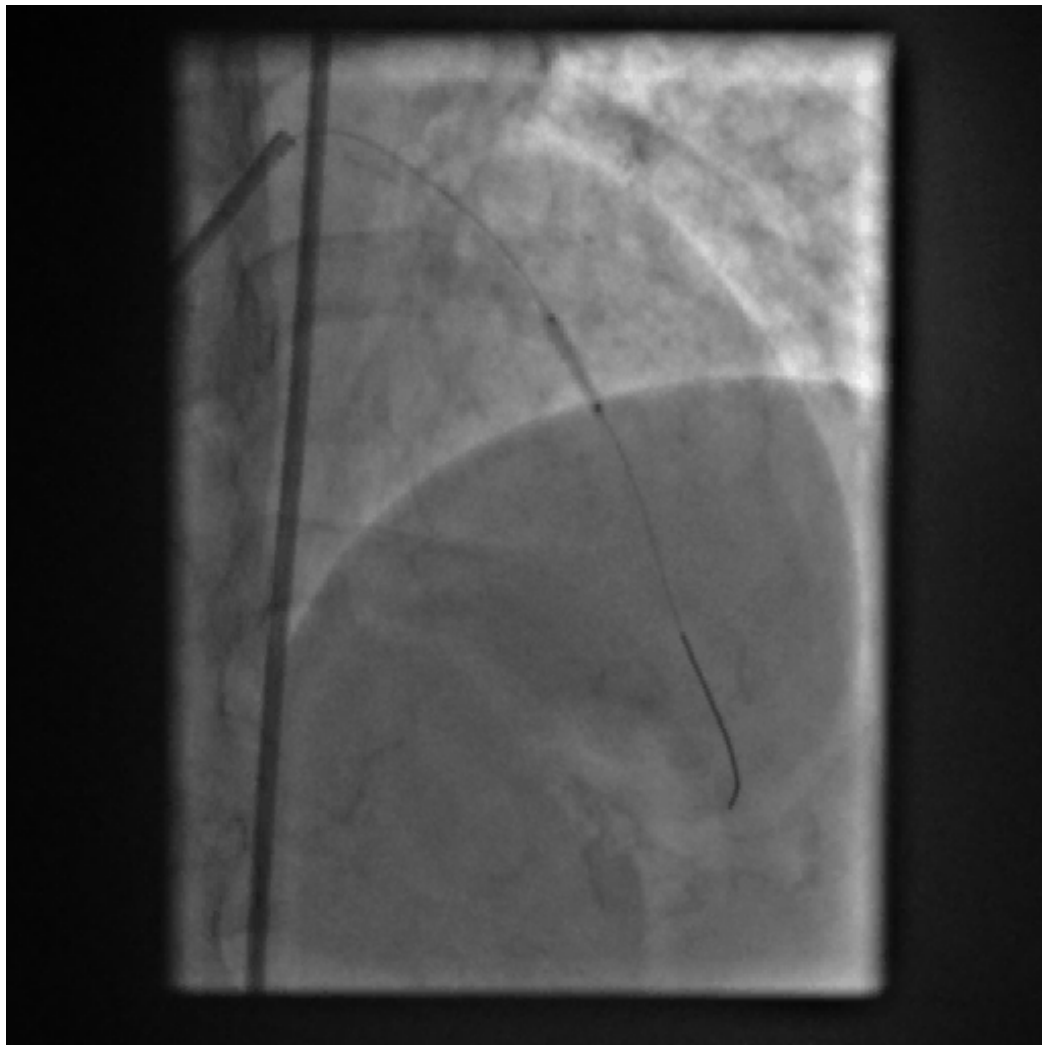
Dr. Ezhilan.J
Senior Consultant Cardiologist
Madras Medical Mission
Chennai, India

CLINICAL PROFILE

- 63 Yrs female
- Diabetic, Hypertensive,
- Presented with H/O Exertional angina
- Positive stress test
- Good LV function
- Coronary angiogram: DVD involving LAD & LCX

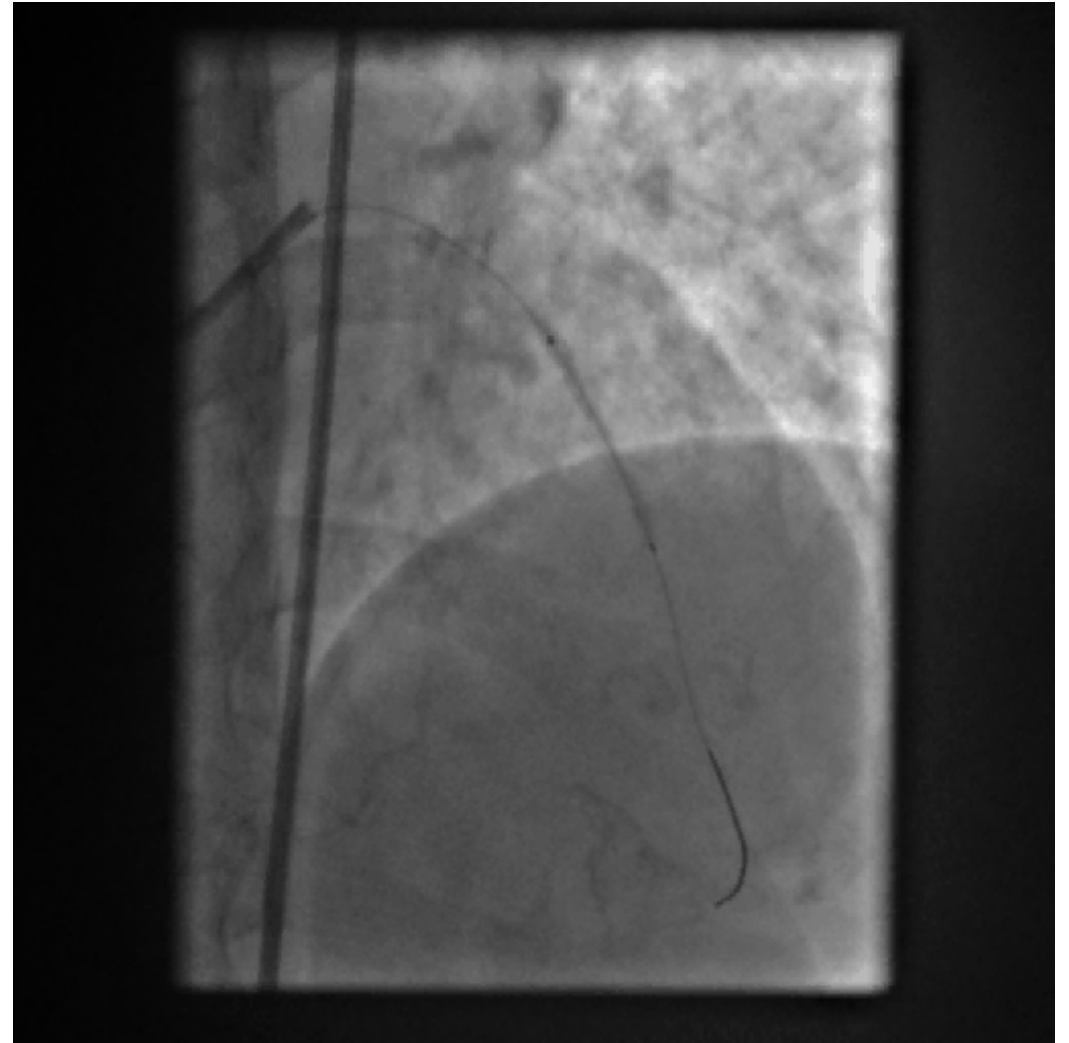
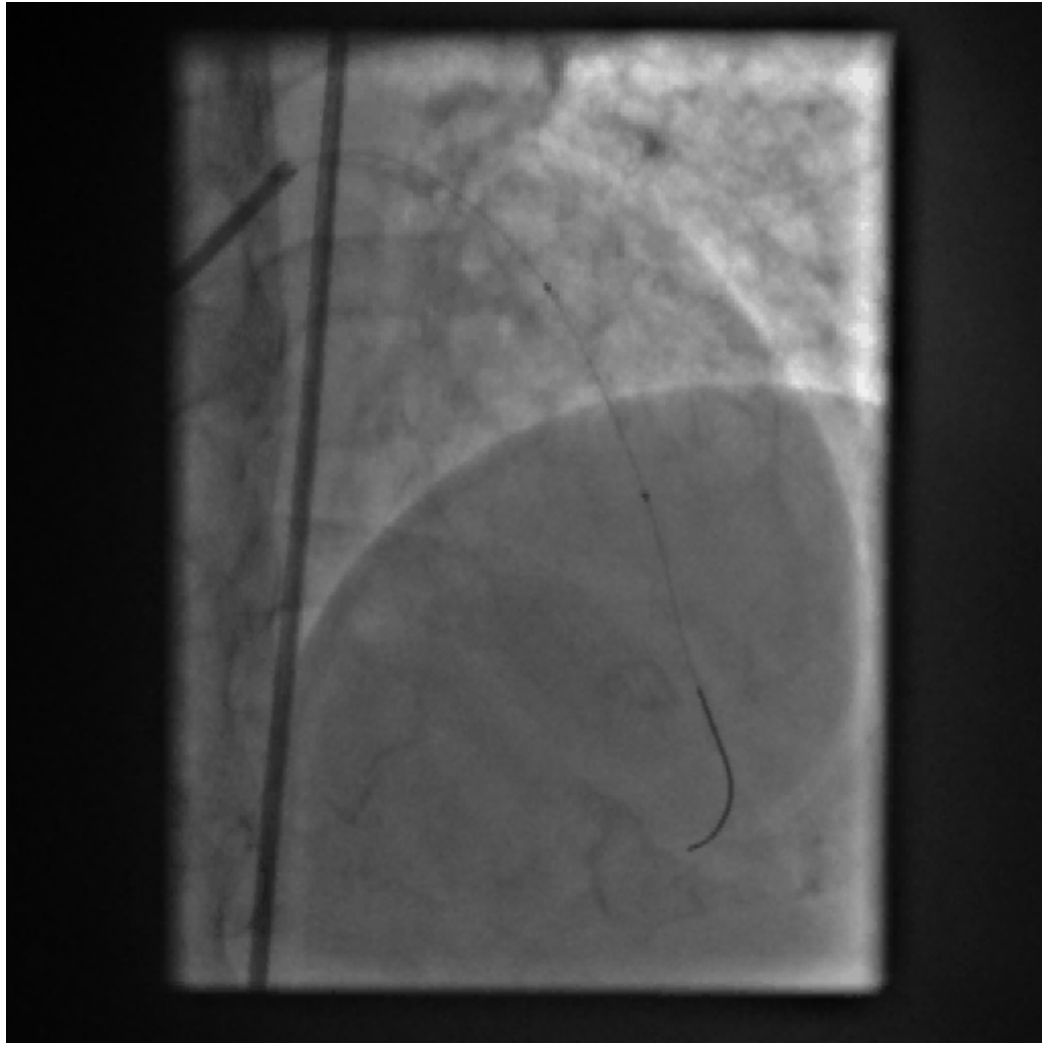
LCA Angiogram



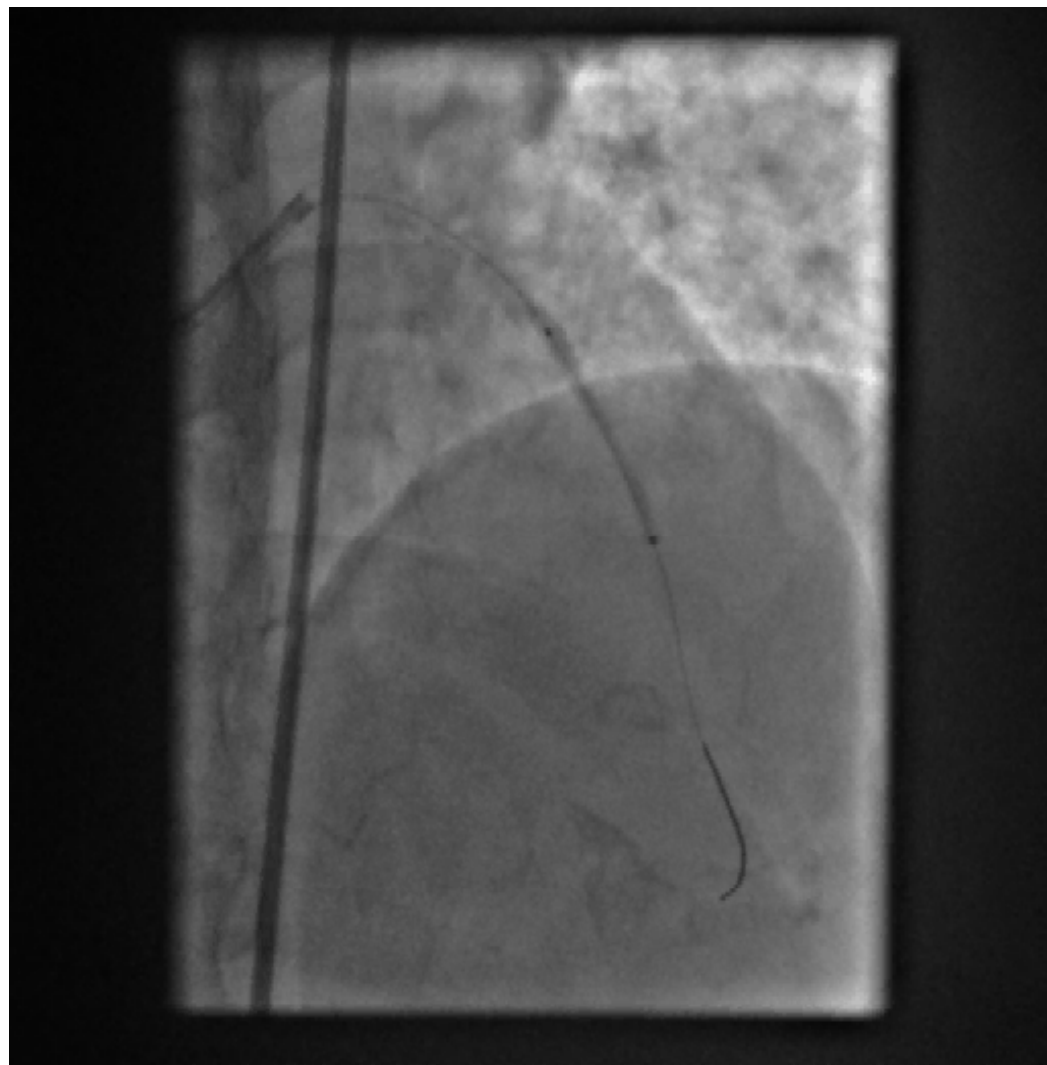
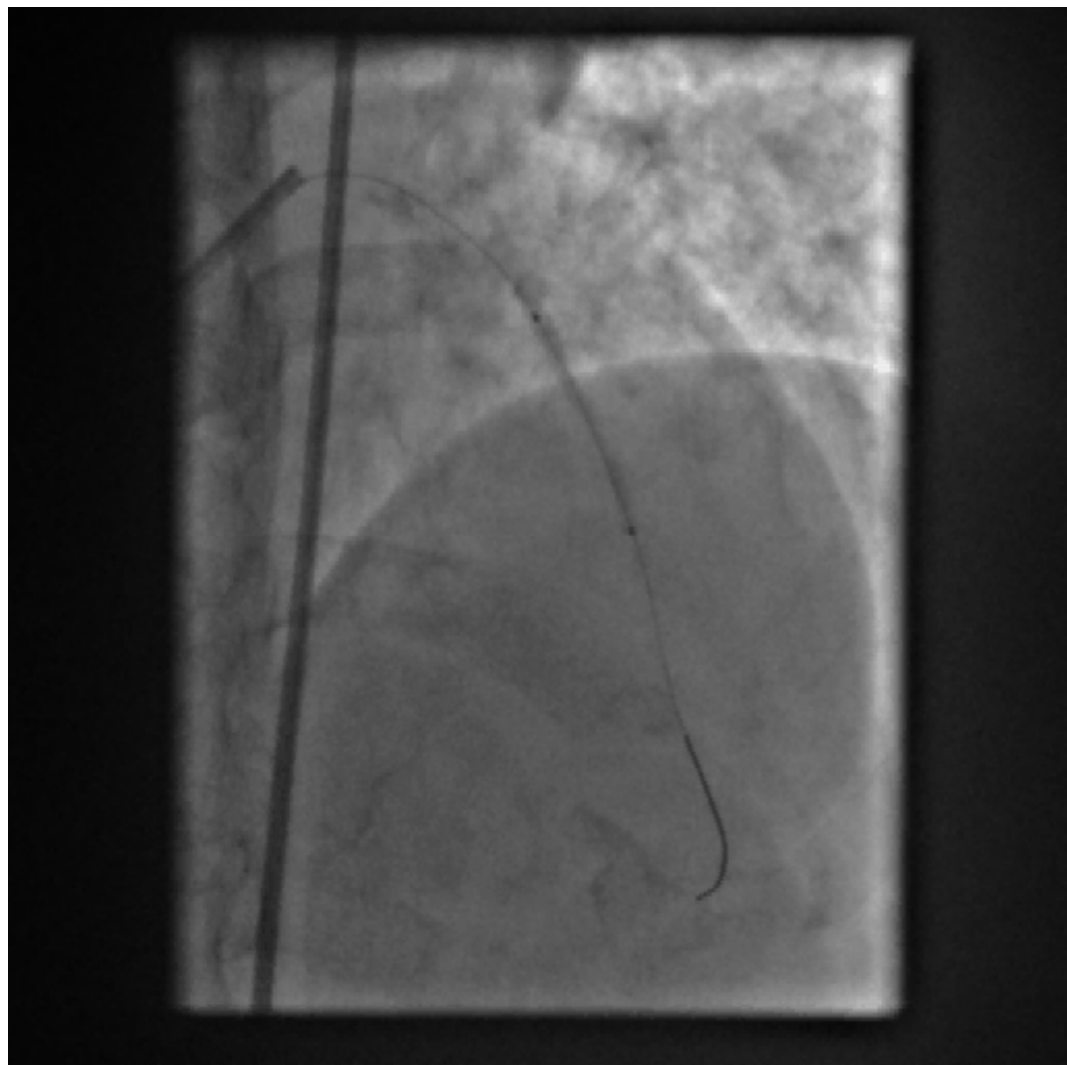


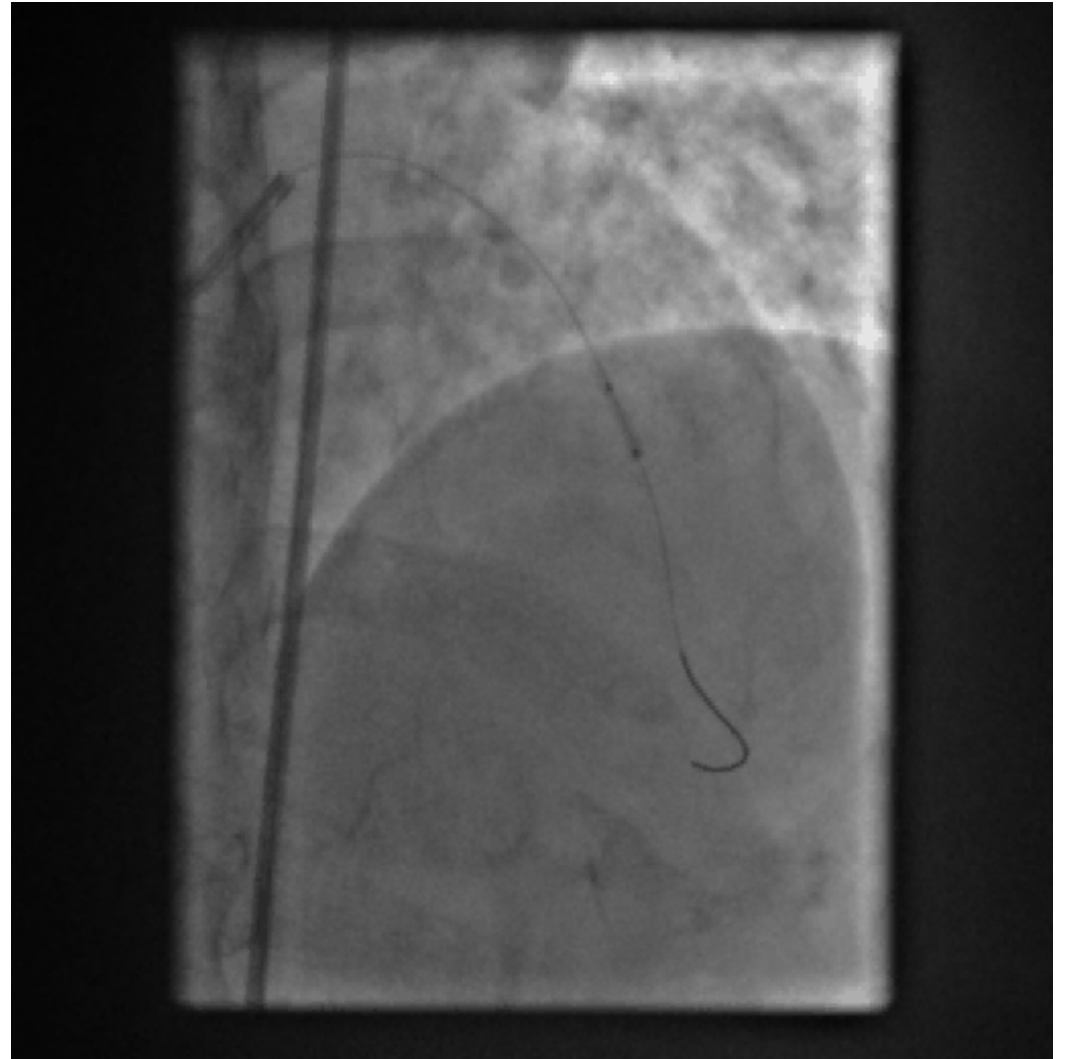
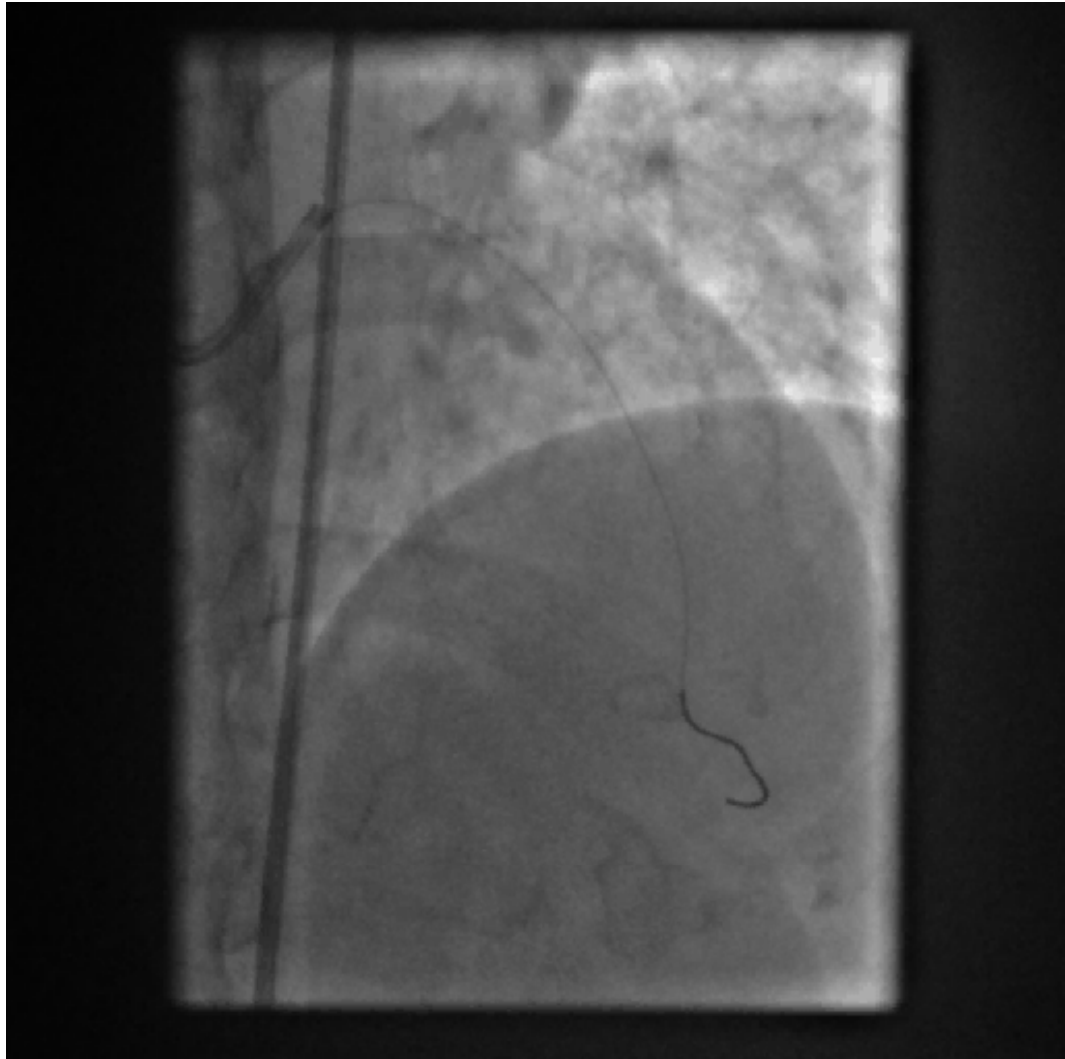
7F XB 3.0 – CORDIS GUIDING CATHETER
0.014" GALEO – GUIDE WIRE

PREDILATATION: 2.5 x 12 mm TREK UPTO 8 ATM. FOR 8 SEC

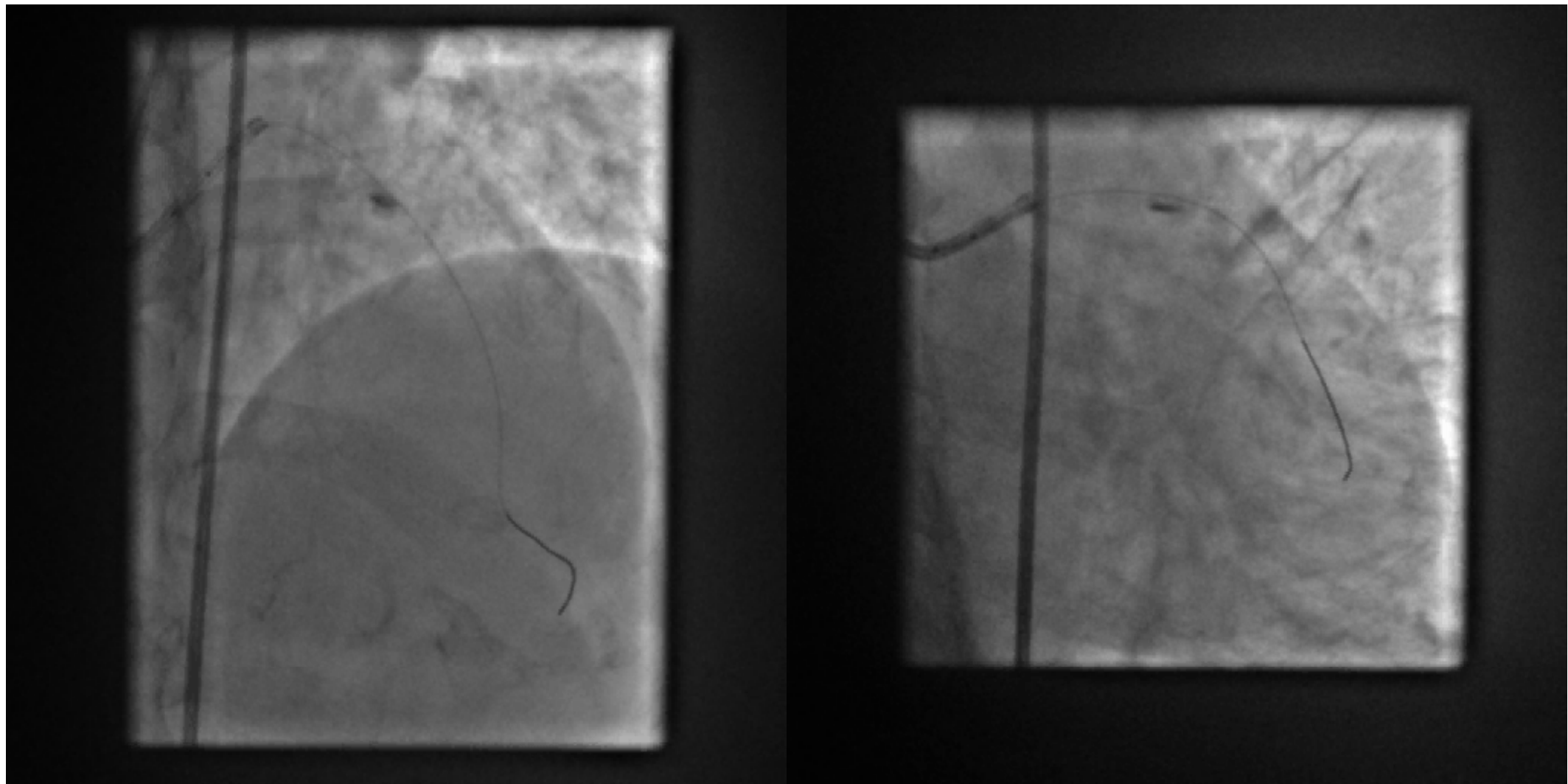


2.5 x 28 mm ABSORB (BVS) AT 8 ATM· FOR 23 SEC

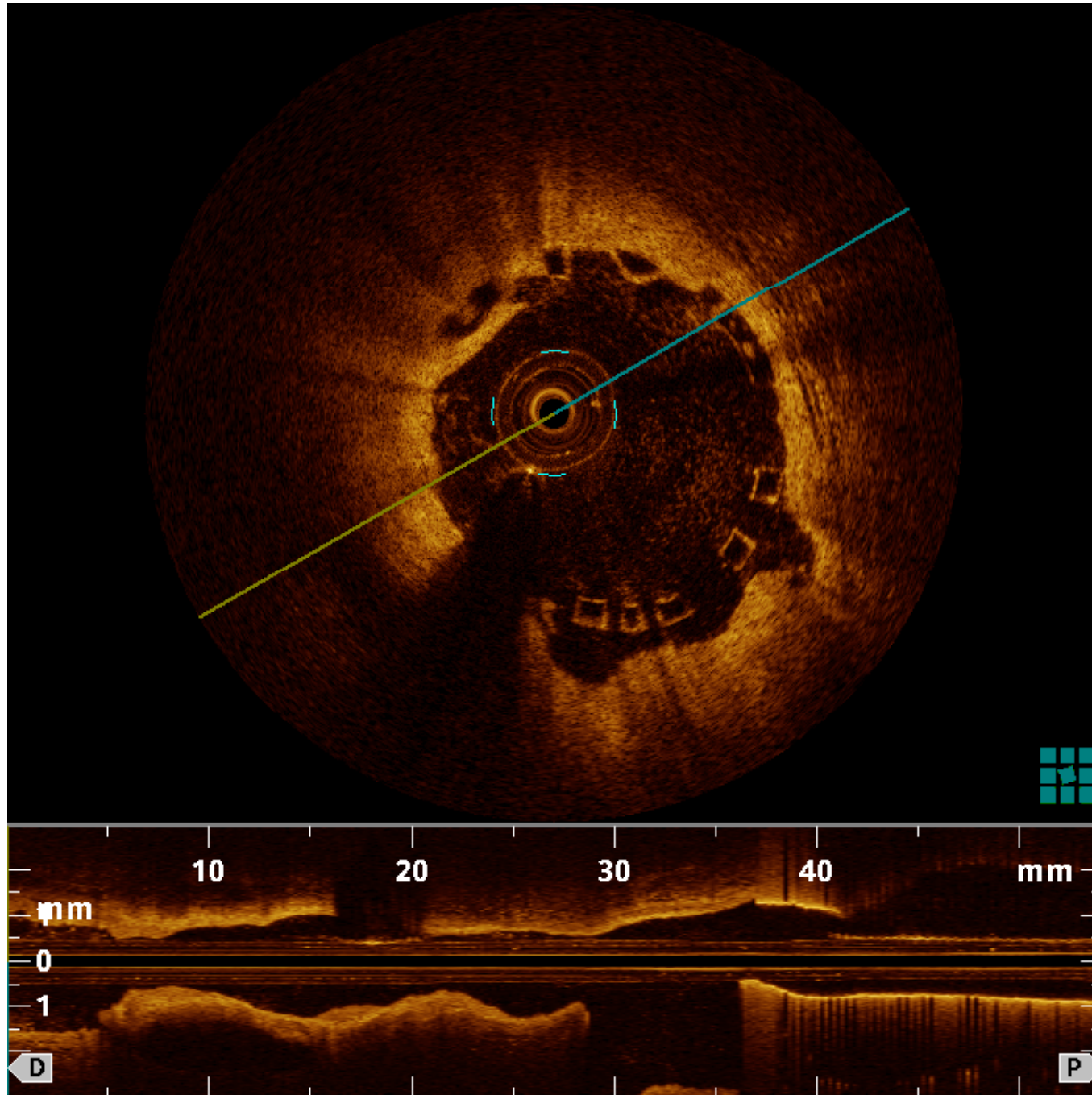




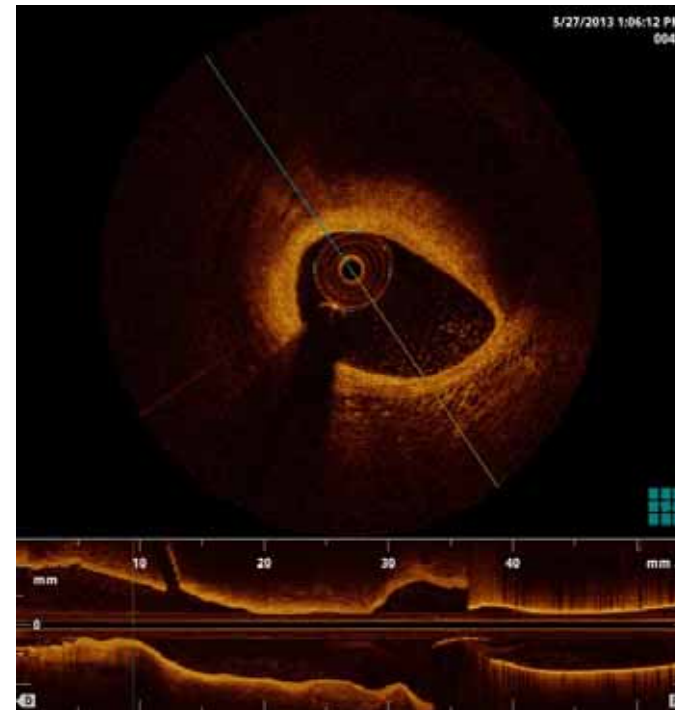
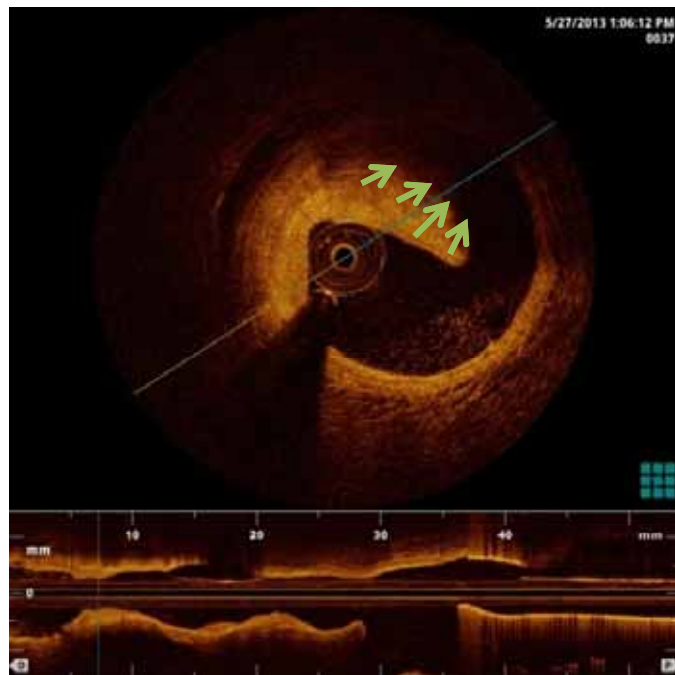
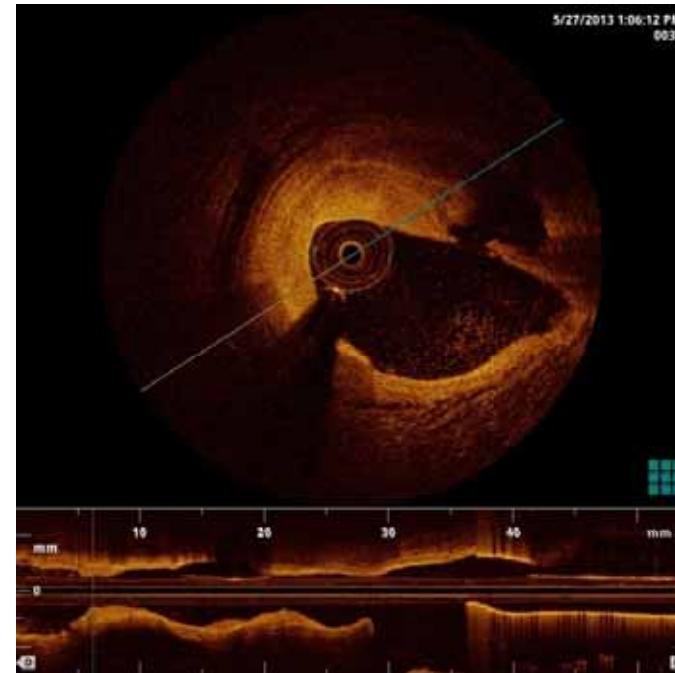
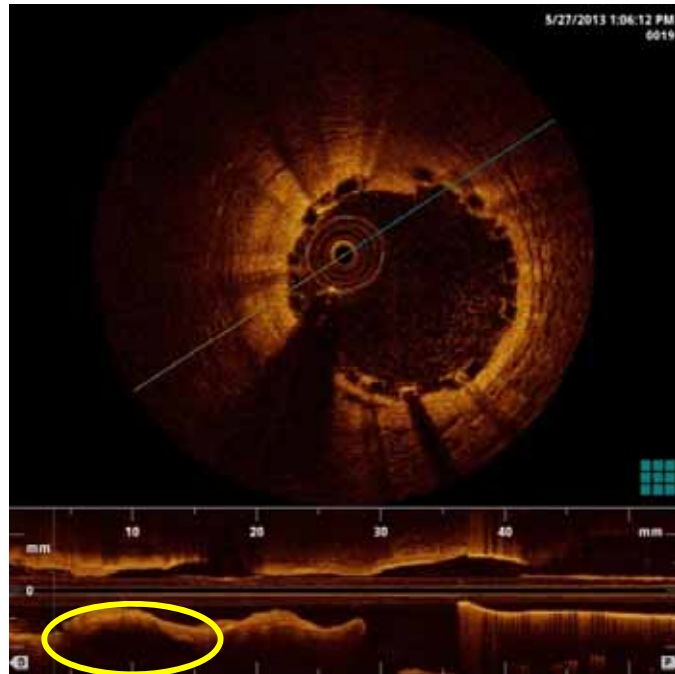
2.75 x 28 mm TREK UPTO 12 ATM. FOR 8 SEC



OCT

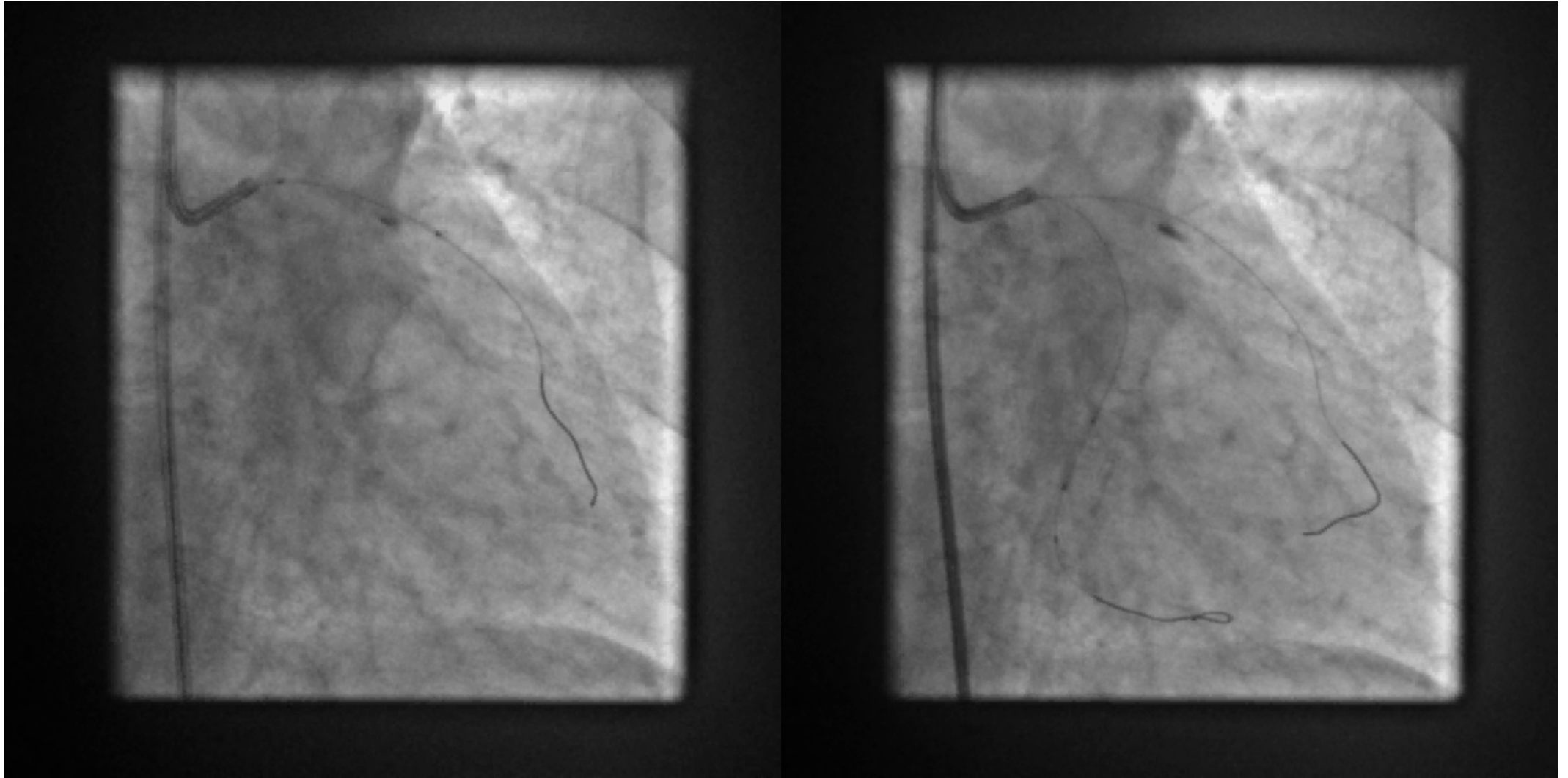


INTRAMURAL HEMATOMA ON OCT

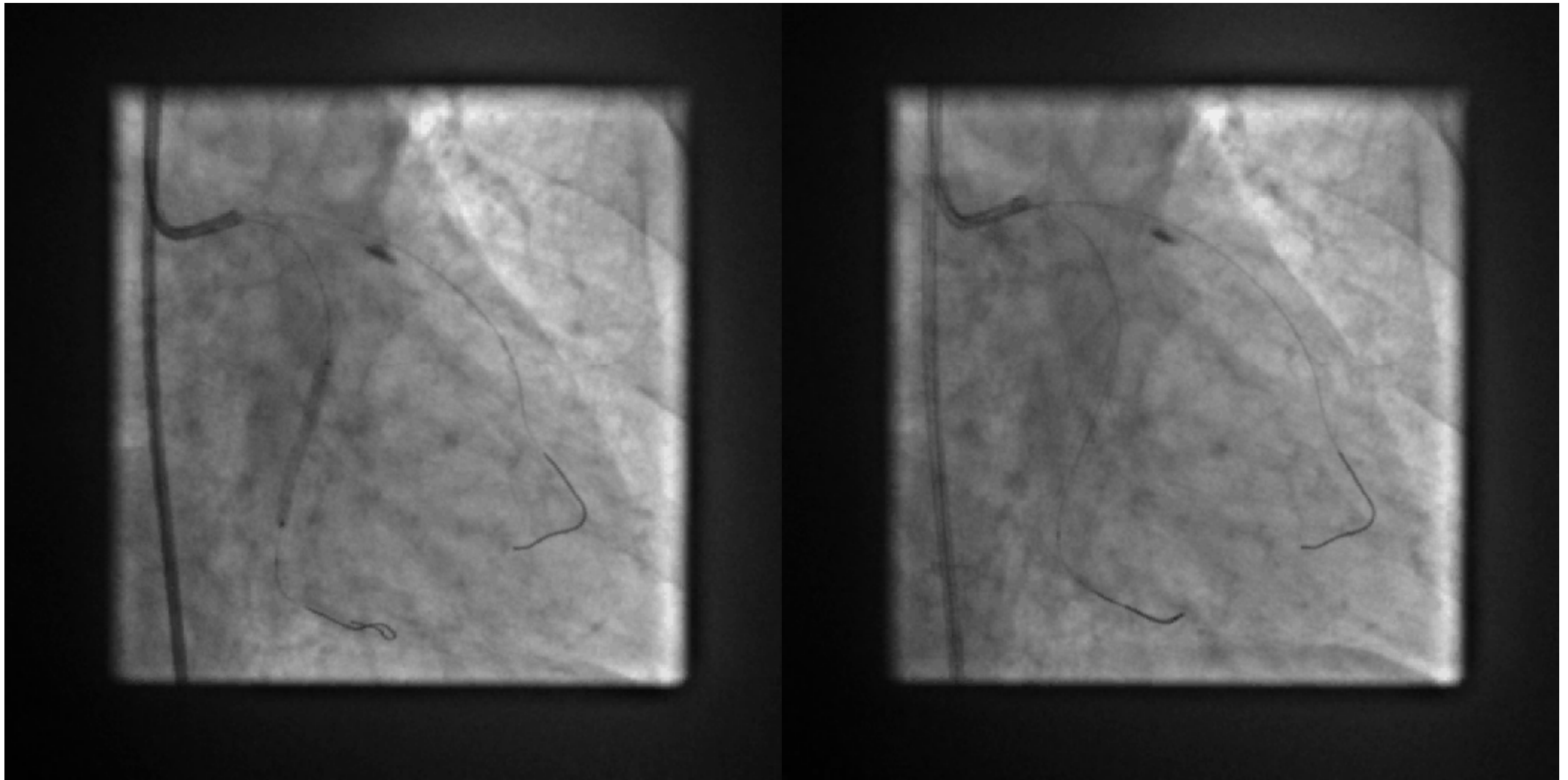


INTRAMURAL HAEMATOMA

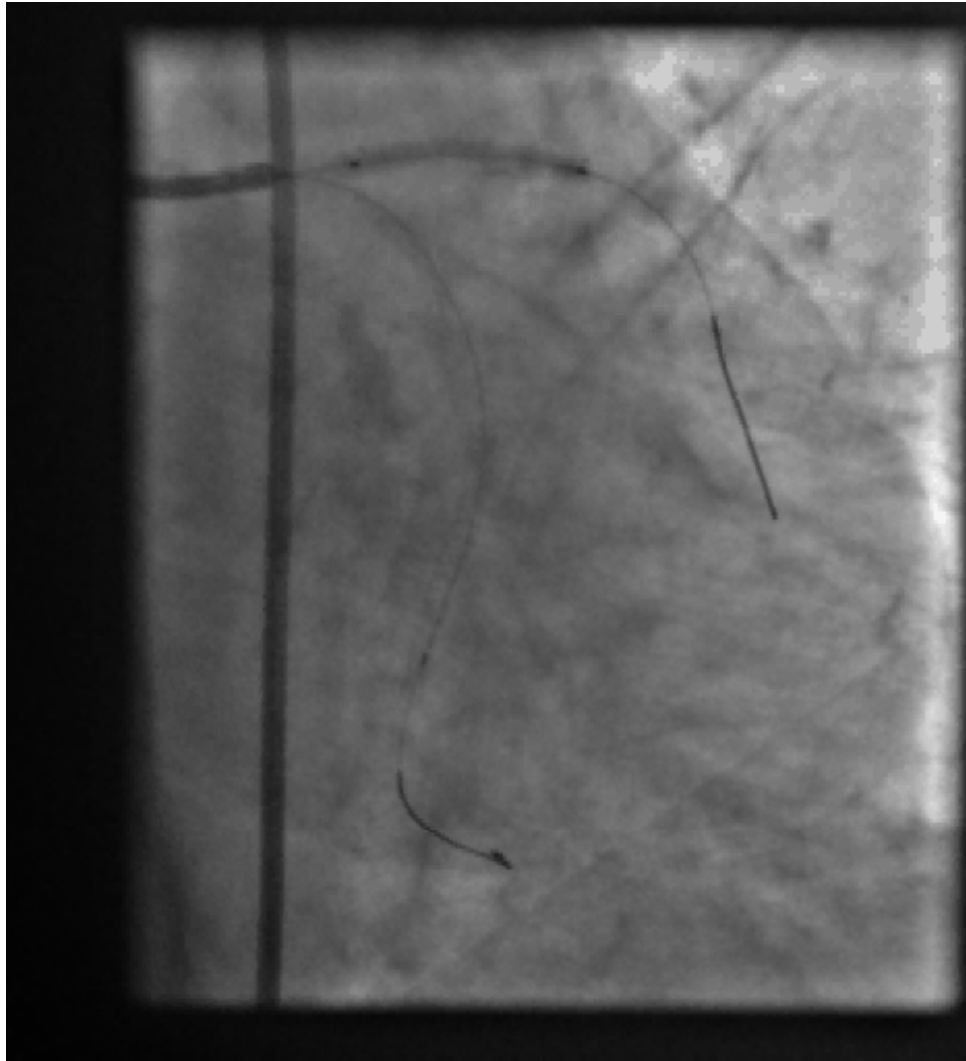
- DEF: IMH is defined as through & through tear of the intima with blood collecting between the IEM inwards and EEM outwards with or without a identifiable entry point. Very rarely in 6% one can also identify a reentry point
- IMH occurs in 7% of PCI.
- It can occur proximal or distal to the stent.
- It can propagate forwards(60%) or backwards (40%).
- Side branch or plaque can limit its spread.
- One needs to know the circumferential & longitudinal extent of IMH
- Longitudinal extent – For choosing the stent length
- Circumferential extent – It can extend beyond EEM – Extramural haematoma.
- Angiographically IMH is seen as
- 1)Staining in 60% 2)New lesion/Spasm in 10% 3) Not detected in 30%
- 30% of IMH pts will develop NSTEMI and sudden death can occur days to weeks after the procedure.



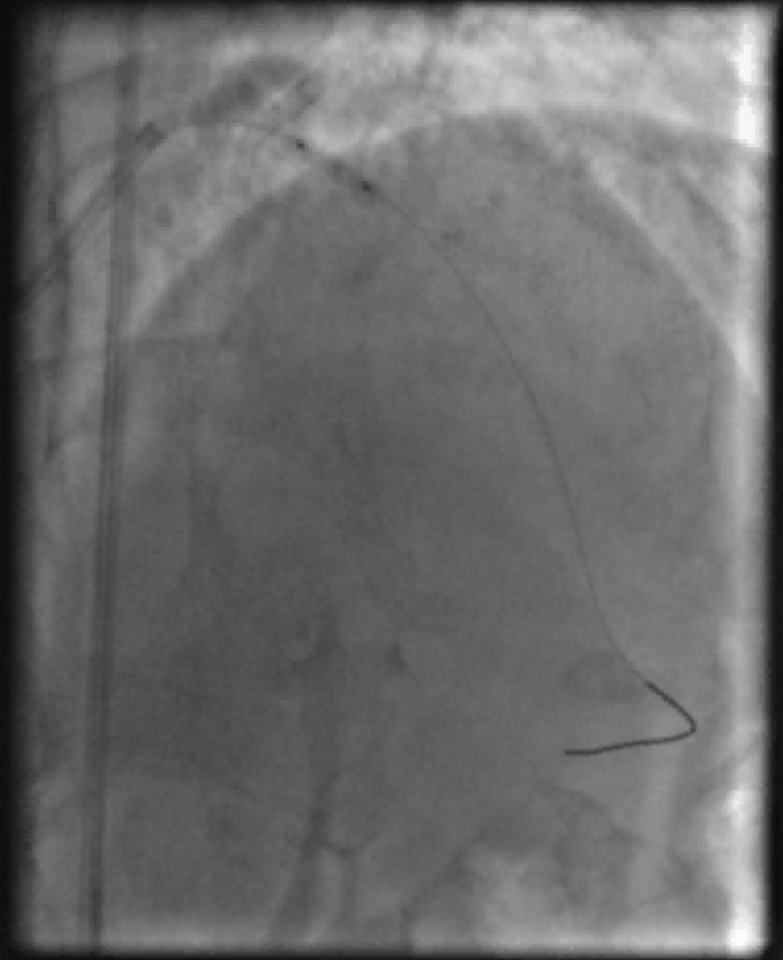
2.5 x 12 mm TREK UPTO 12 ATM· FOR 6 SEC



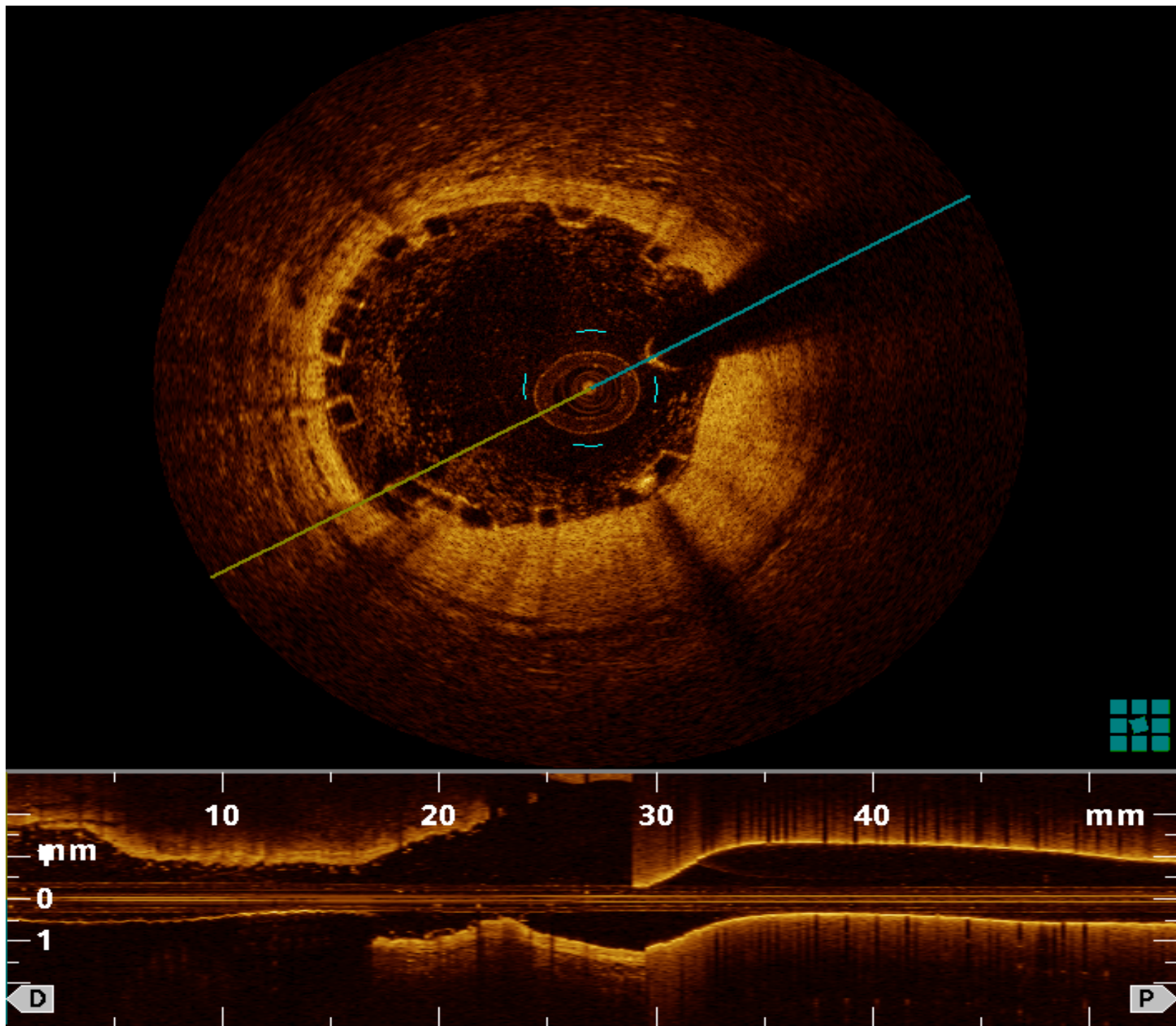
2.5 x 28 mm XIENCE V AT 8 ATM· FOR 14 SEC

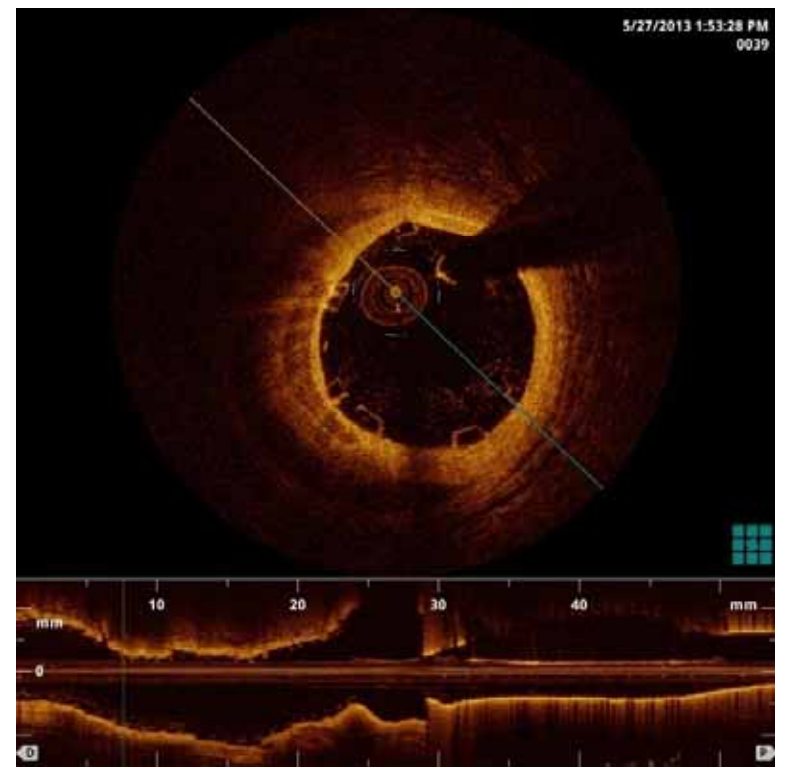
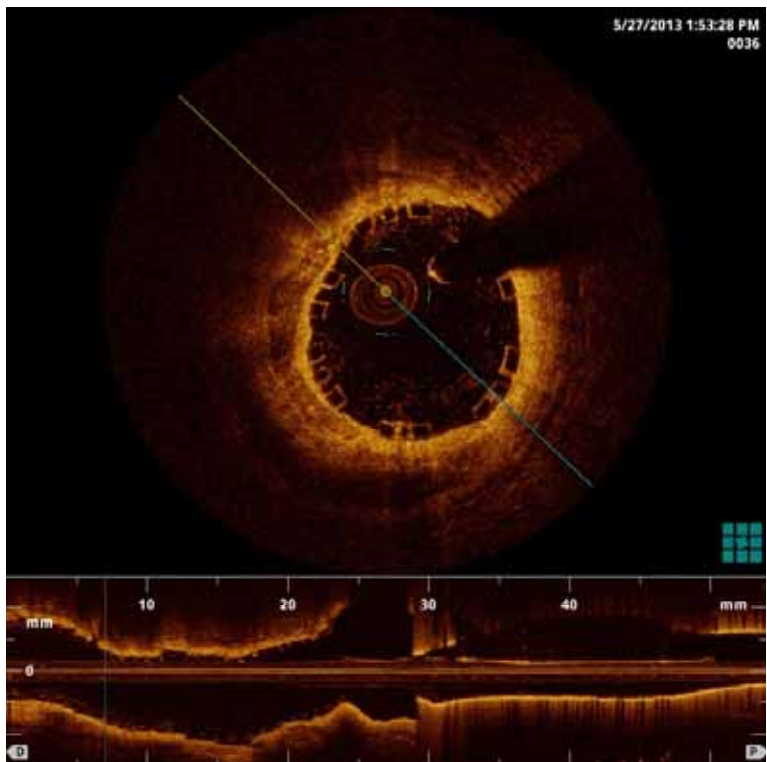
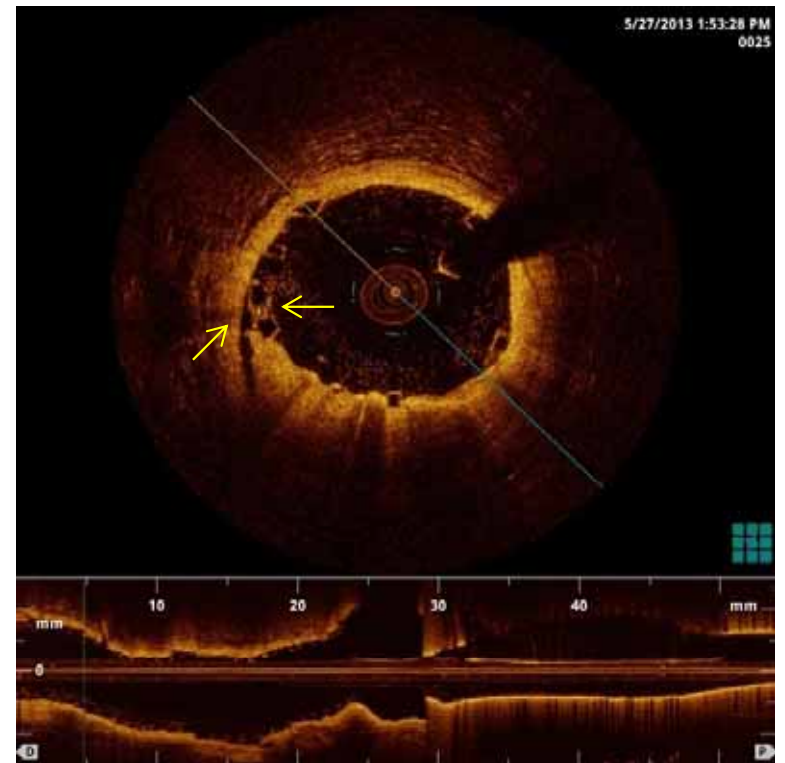
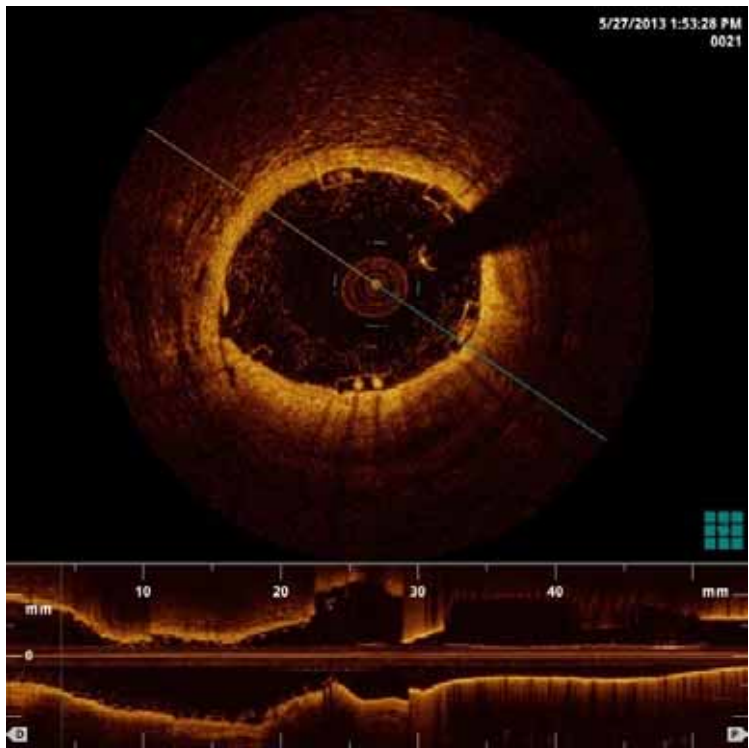


3.0 x 28 mm ABSORB (BVS) AT 8 ATM. FOR 28 SEC

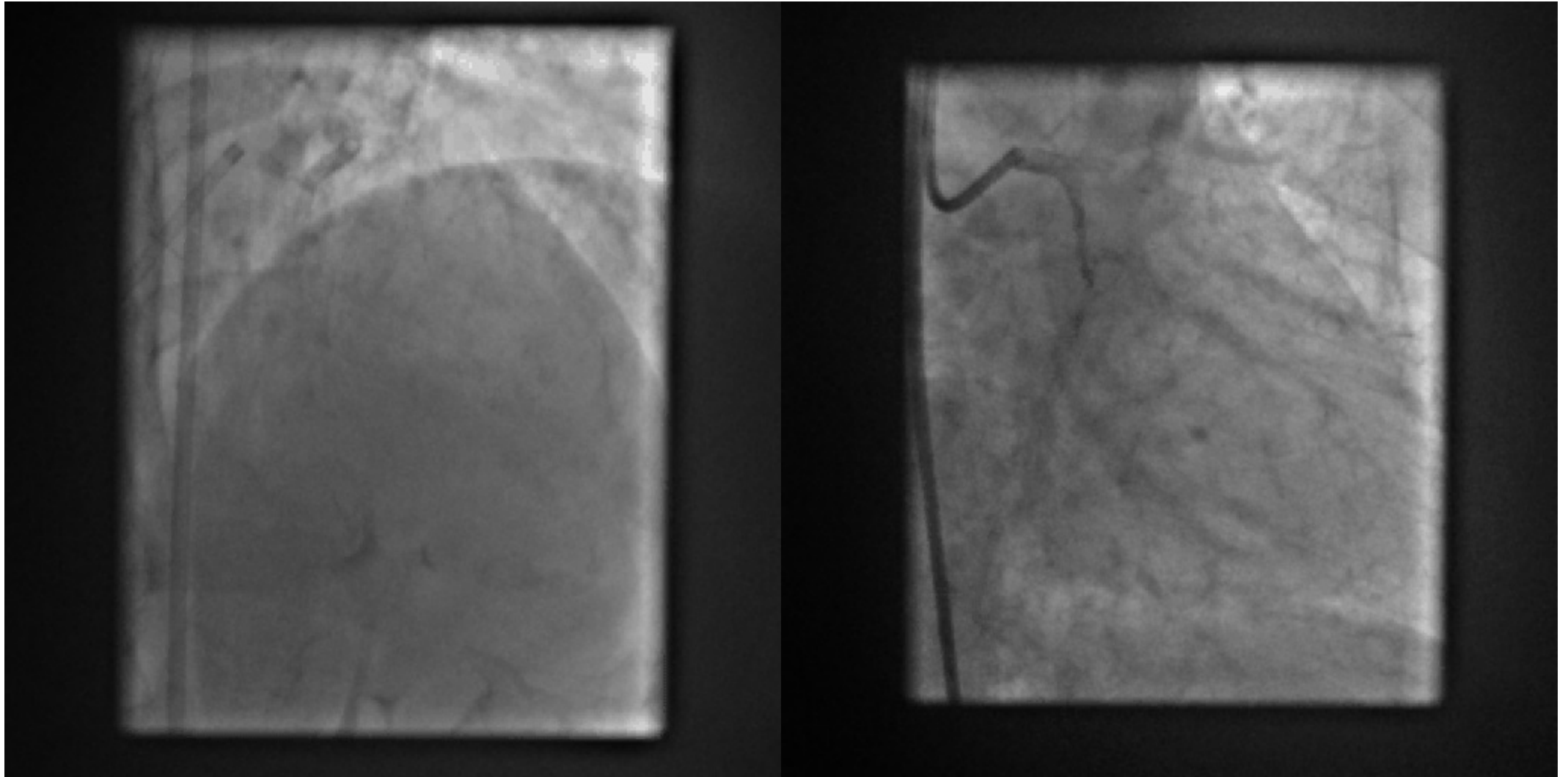


3.0 x 9 mm NC SPRINTER AT 8 ATM. FOR 12 SEC





FINAL RESULT



TAKE HOME MESSAGE

NOT ONLY METAL

EVEN PLASTIC CAN

CUT THE INTIMA