

When and How to Apply Atherectomy Devices

Ajay J. Kirtane, MD, SM

*Center for Interventional Vascular Therapy
Columbia University Irving Medical Center
New York-Presbyterian Hospital*

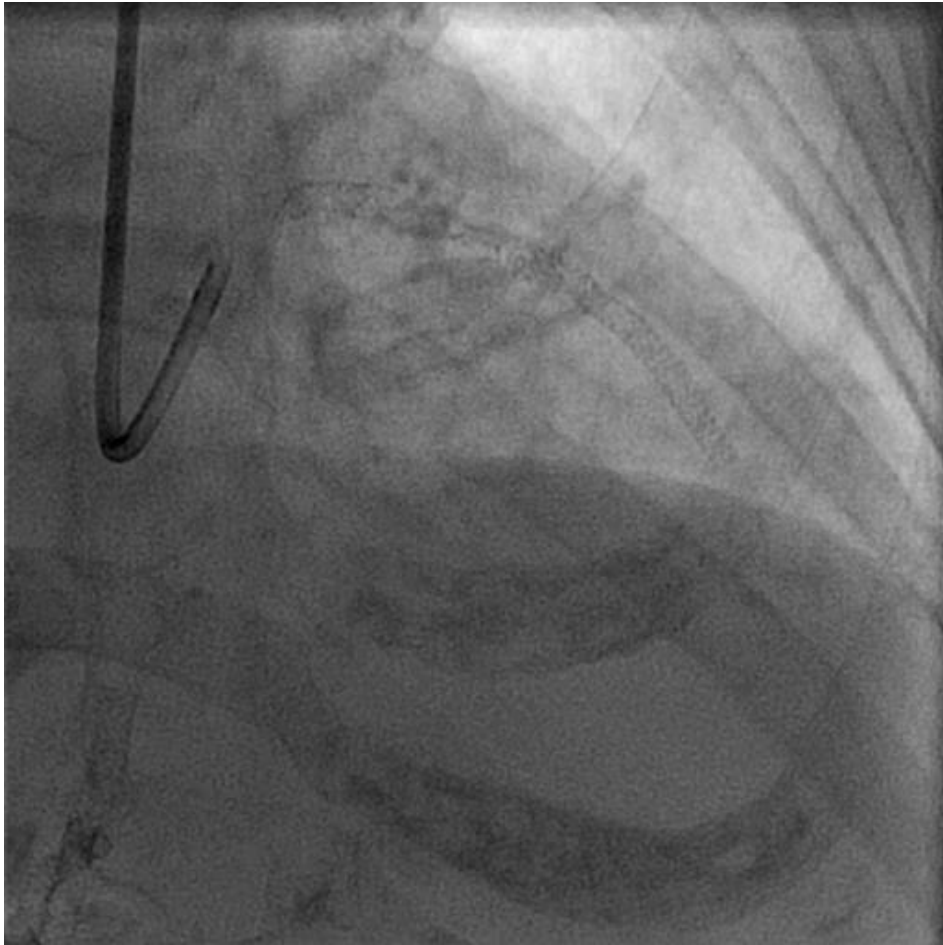
@ajaykirtane

Financial Conflict of Interest Disclosure

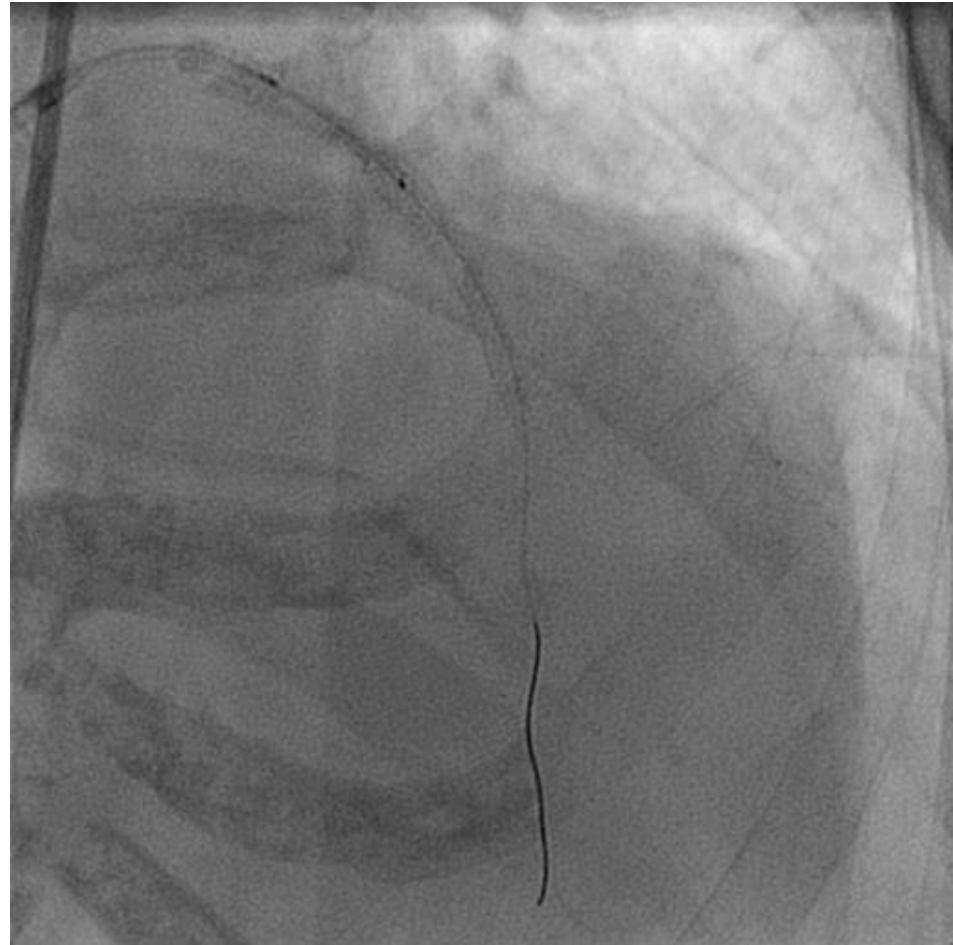
- Dr Kirtane reports Institutional funding to Columbia University and/or Cardiovascular Research Foundation from Medtronic, Boston Scientific, Abbott Vascular, Amgen, CSI, Siemens, Philips, ReCor Medical, Neurotronic, Biotronik. In addition to research grants, institutional funding includes fees paid to Columbia University and/or Cardiovascular Research Foundation for consulting and/or speaking engagements in which Dr. Kirtane controlled the content. Personal: Consulting from IMDS; Travel Expenses/Meals from Medtronic, Boston Scientific, Abbott Vascular, Abiomed, CSI, Siemens, Philips, ReCor Medical, Chiesi, OpSens, Zoll, and Regeneron.

An Illustrative Case...

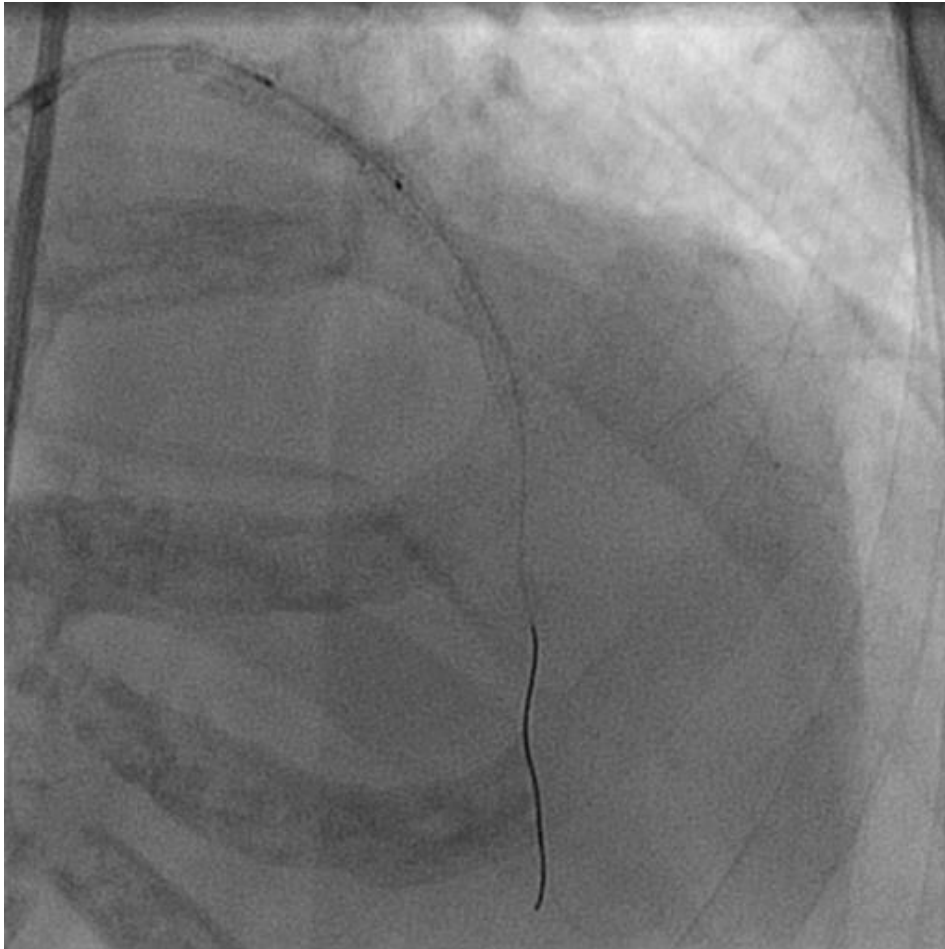
- 70 yo F with PMH of HTN, HLD, DM2, CLL and CAD/PAD with progressive angina
- 2/3/2017 Stents deployed in proximal/mid LAD with noted underexpansion
 - Progressive exertional angina
- 07/14/2017 Rotational atherectomy (stent ablation) with PTCA
 - Still unable to expand stent
 - Continued exertional angina



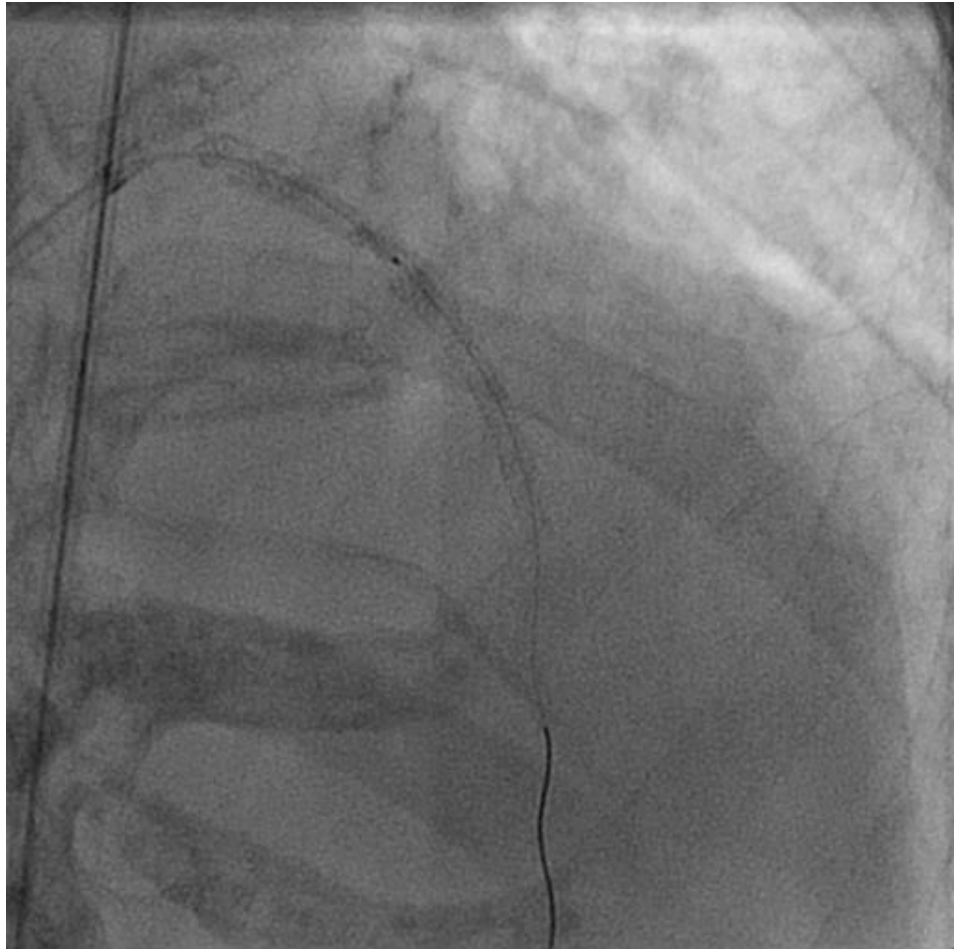
7F EBU 3.5



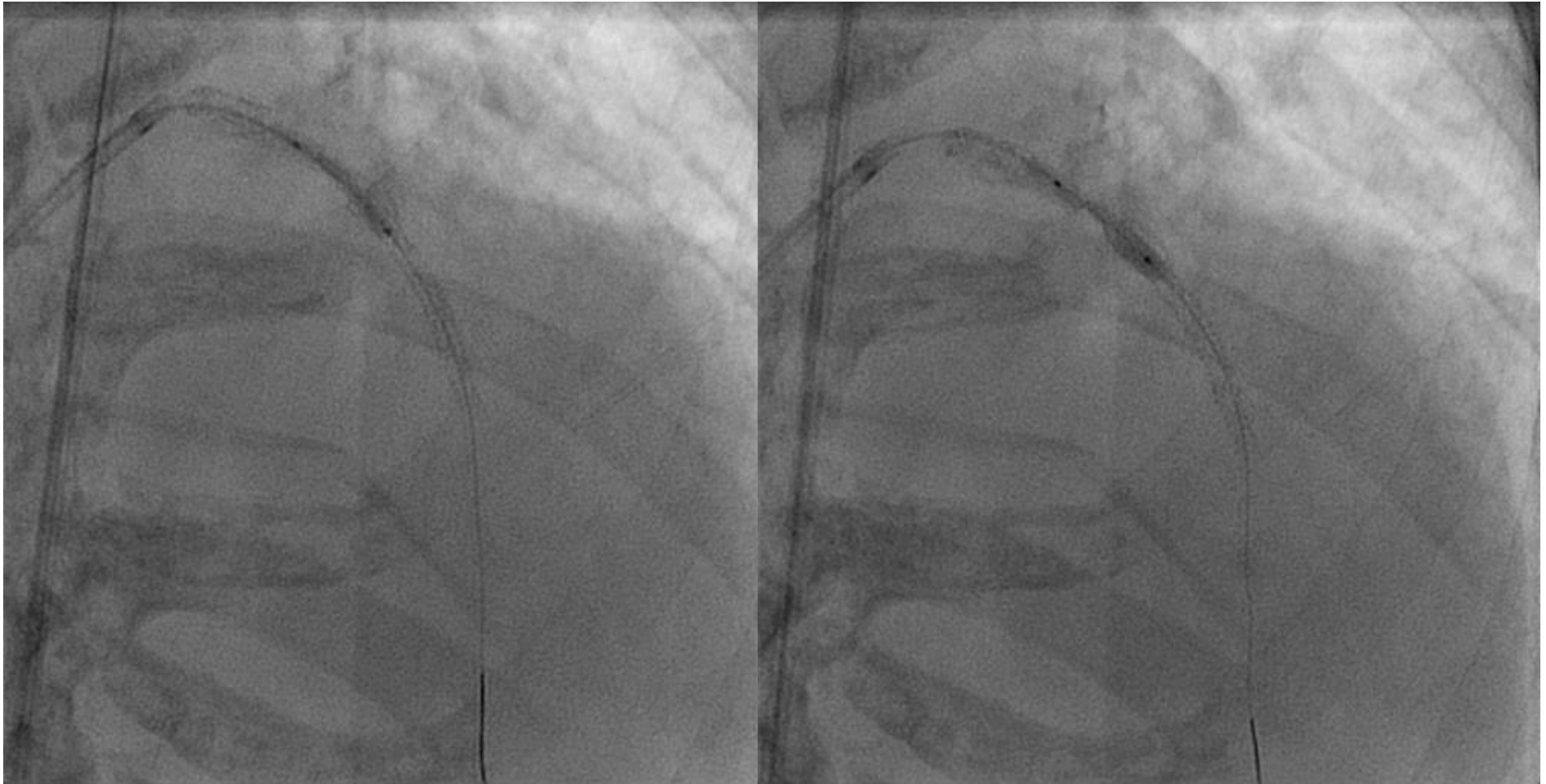
IVUS – Wouldn't cross



2.0 x 15 balloon: would not cross



1.25 x 6 followed by 1.5 mm balloon



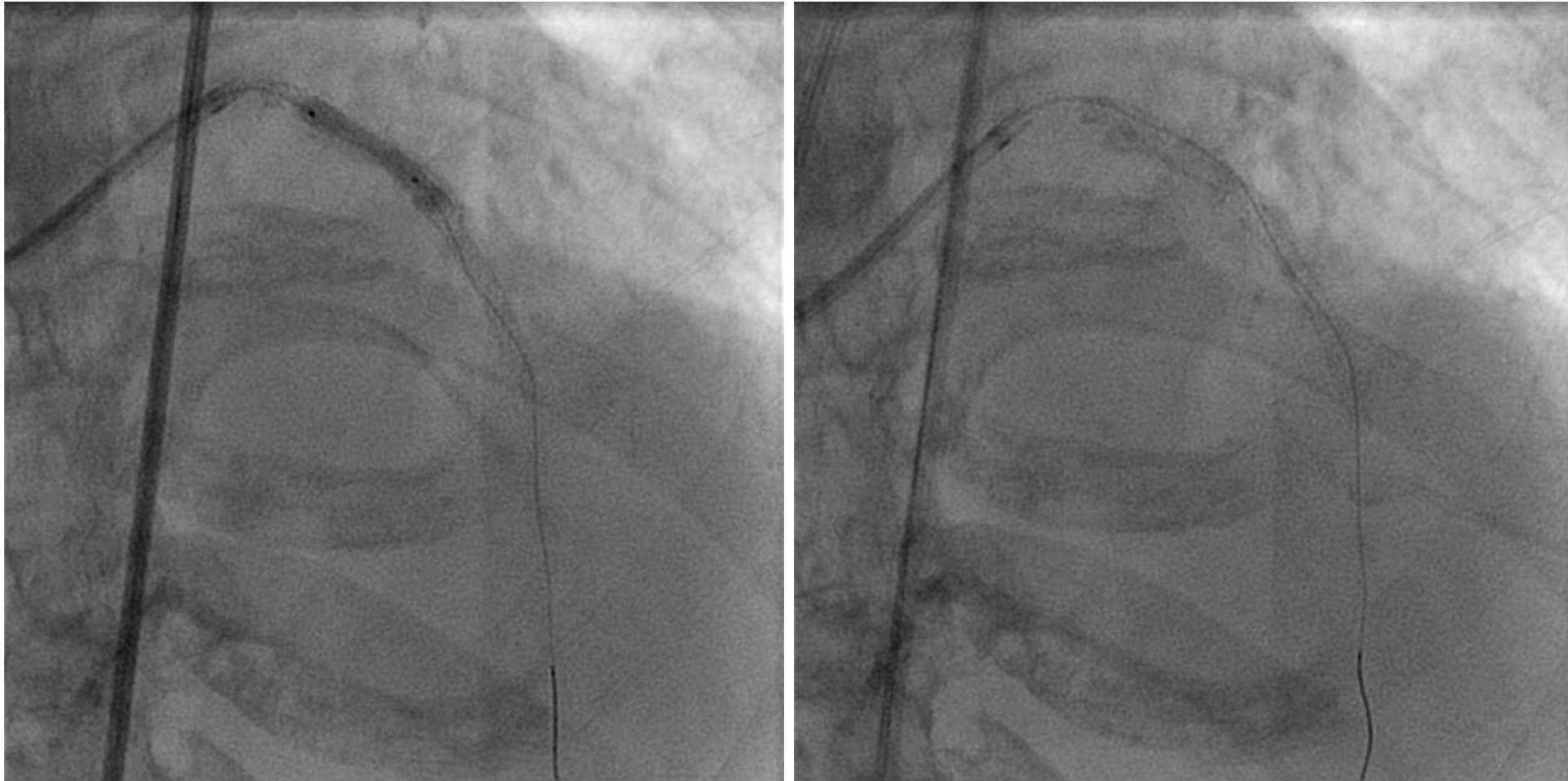
NC Quantum 3.0 x 15 @ 30 (x4 times)

NC Euphora 3.0 x 15 @ 30 (x2 times)

Unable to advance 3.0 balloon past pLAD stent

What Next?

After Laser Atherectomy (Contrast)



NC 3.0 x 15 @ 26

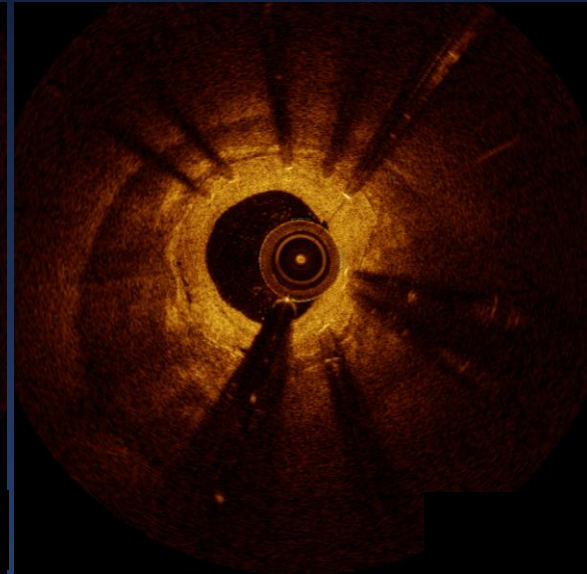
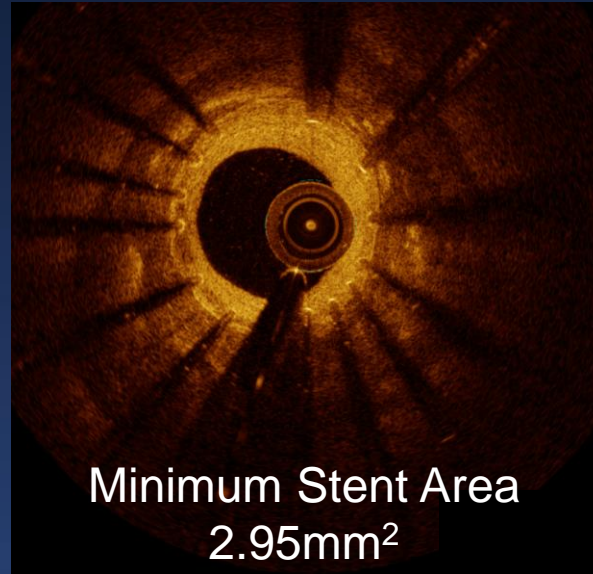
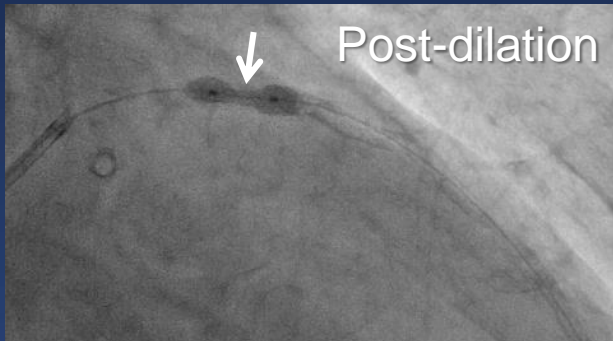
Final Result



**Is this case more
broadly
generalizable?**

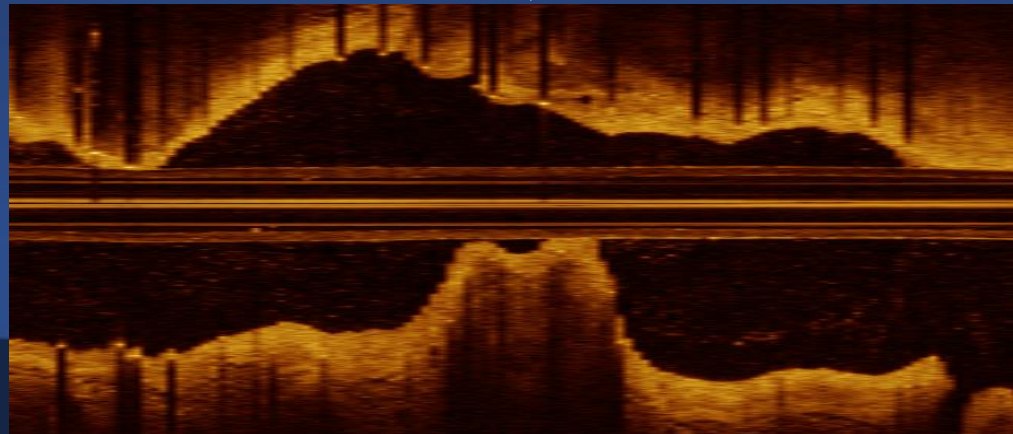
YES!!

79 yo, Recurrent ISR



Distal

Proximal



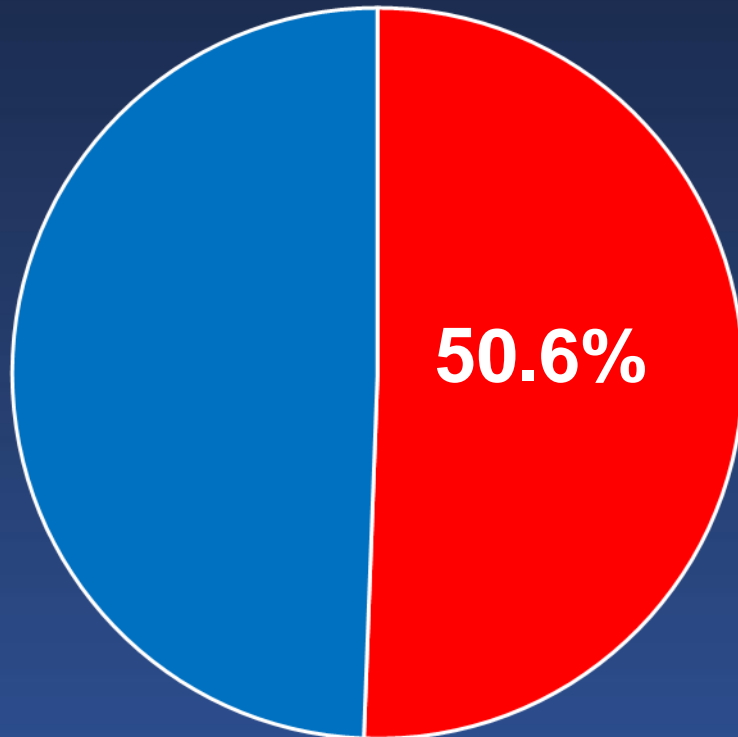
Frequency of angio core lab moderate-severe calcification in 13 DES studies (despite being an exclusion criterion in most studies)

RAVEL	23.3% (27/116)
SIRIUS	17.1% (91/531)
E-SIRIUS	16.1% (28/174)
C-SIRIUS	12.0% (6/50)
TAXUS IV	18.3% (121/660)
TAXUS V	32.5% (185/570)
TAXUS VI	29.7% (65/219)
ENDEAVOR II	23.7% (140/590)
ENDEAVOR III	17.9% (78/436)
ENDEAVOR IV	33.2% (513/1546)
SPIRIT II	31.4% (91/290)
SPIRIT III	27.8% (277/997)
COMPARE	38.5% (693/1799)
Pooled	29.0% (2,315/7,978)

Frequency of “heavy” calcification in the SYNTAX trial: Randomized + Registry

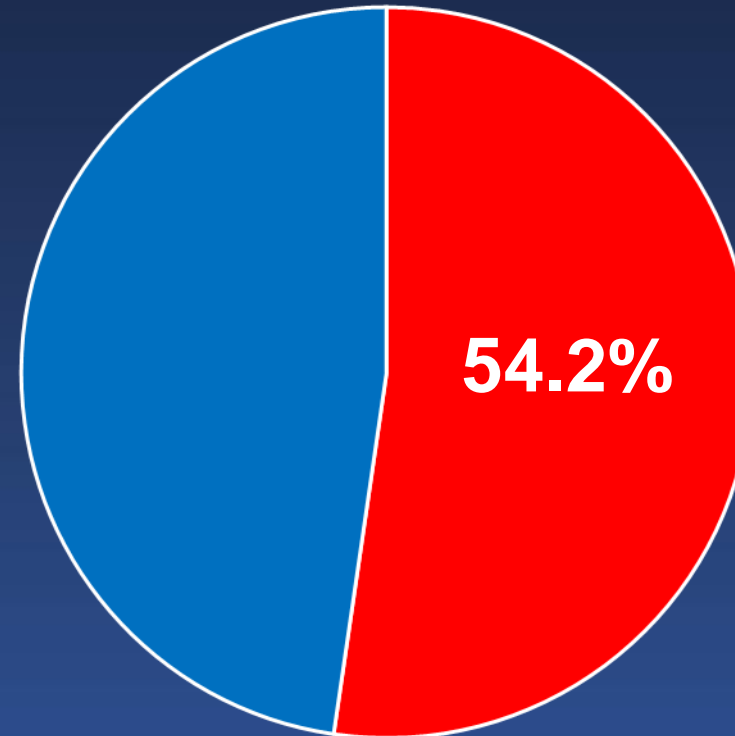
N=2,636 pts with LM or 3VD

PCI (n=1,095)



■ Heavy calcification
■ No heavy calcification

CABG (n=1,541)

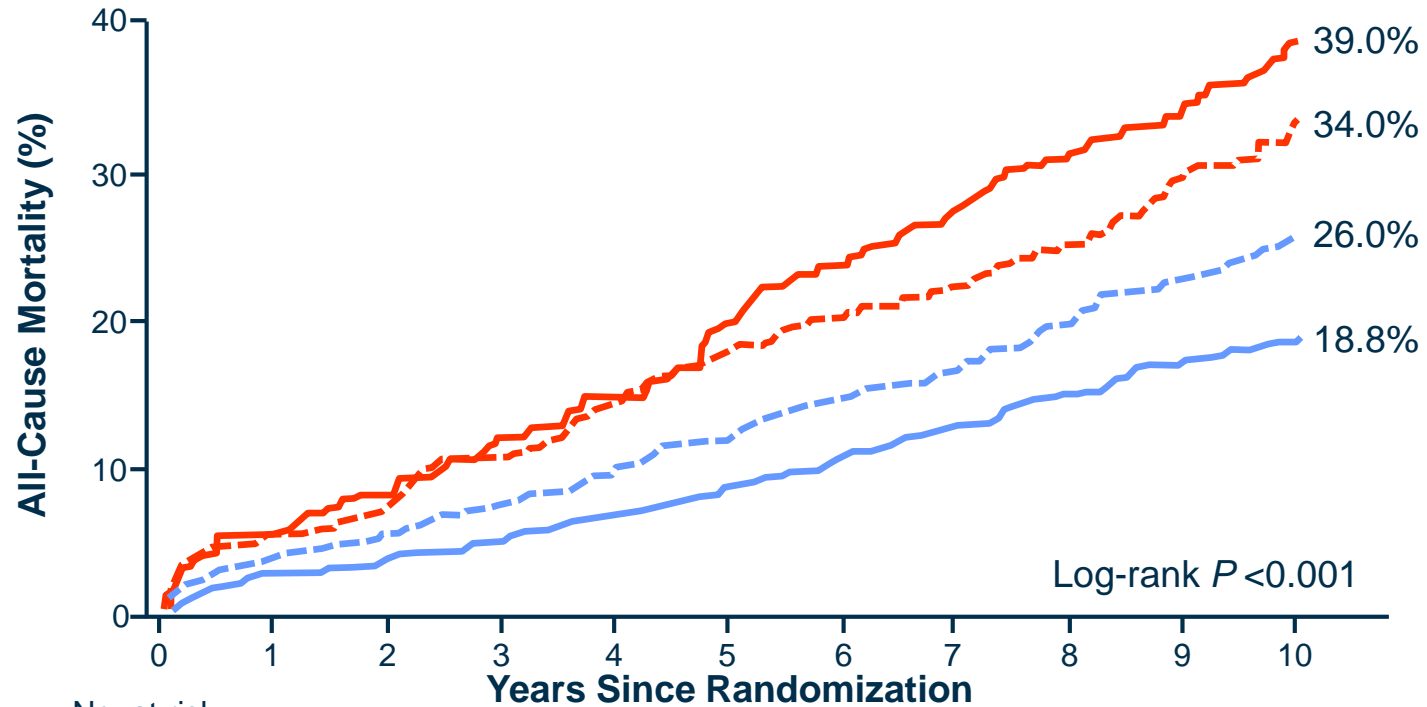


■ Heavy calcification
■ No heavy calcification

Implications of coronary calcification

- ***Coronary calcification results in:***
 - Impaired stent delivery, decreased stent expansion, increased malapposition and stent asymmetry
 - Increased procedural complications (edge dissections and perforations)
 - Increased rates of stent thrombosis and restenosis

Heavily Calcified Lesions Are Associated with Late Mortality after PCI or CABG: The SYNTAX Trial (N =1,800)



No. at risk:

--- (dashed blue)	627	602	591	578	563	536	503	488	468	449	422
— (solid blue)	641	618	606	598	586	566	543	526	514	500	488
--- (dashed orange)	276	258	253	244	232	221	208	202	194	181	170
— (solid orange)	256	238	232	222	214	198	184	174	165	157	145

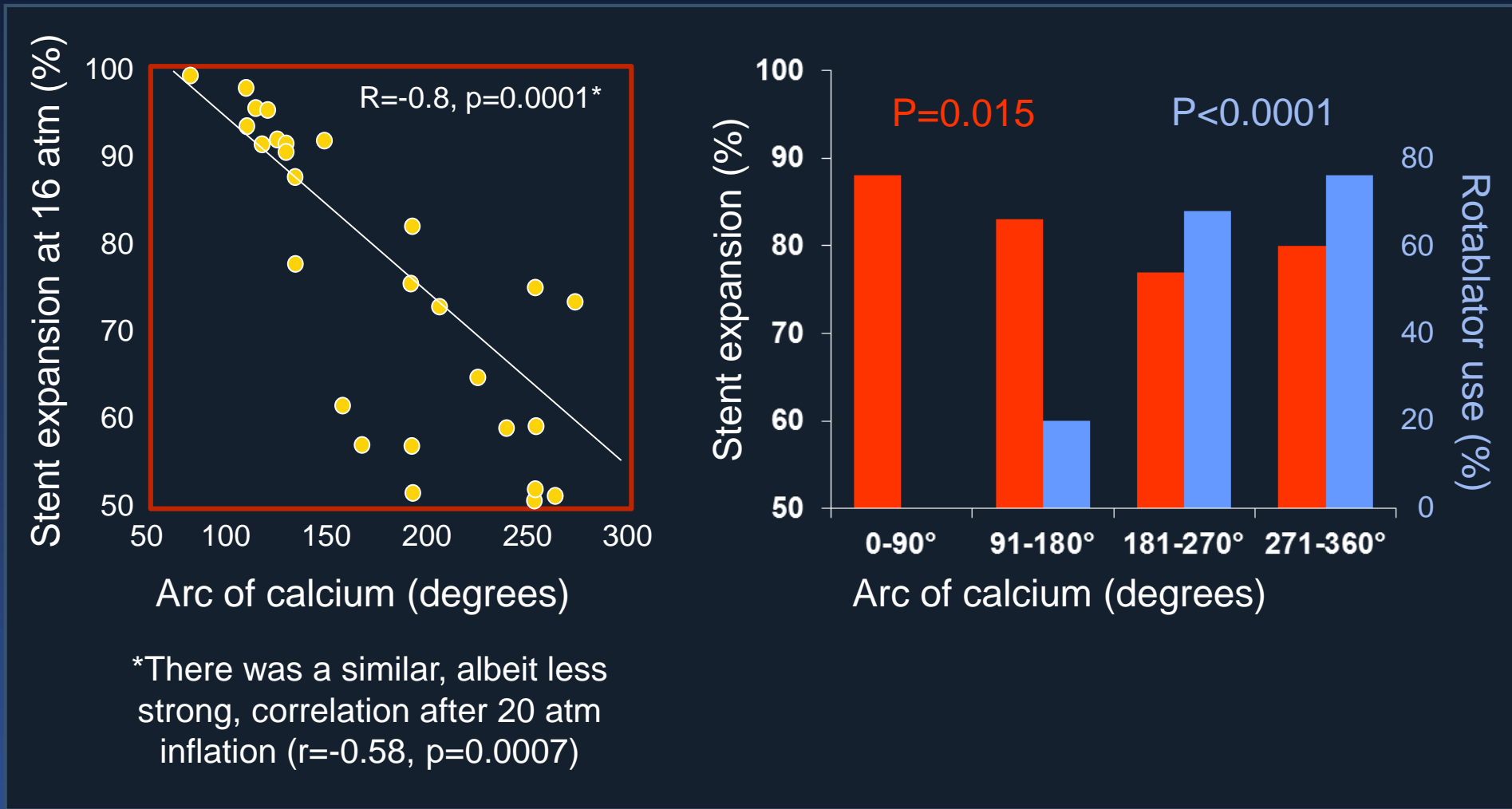
--- Patients Without Heavily Calcified Lesions Undergoing PCI

— Patients Without Heavily Calcified Lesions Undergoing CABG

--- Patients With Heavily Calcified Lesions Undergoing PCI

— Patients With Heavily Calcified Lesions Undergoing CABG

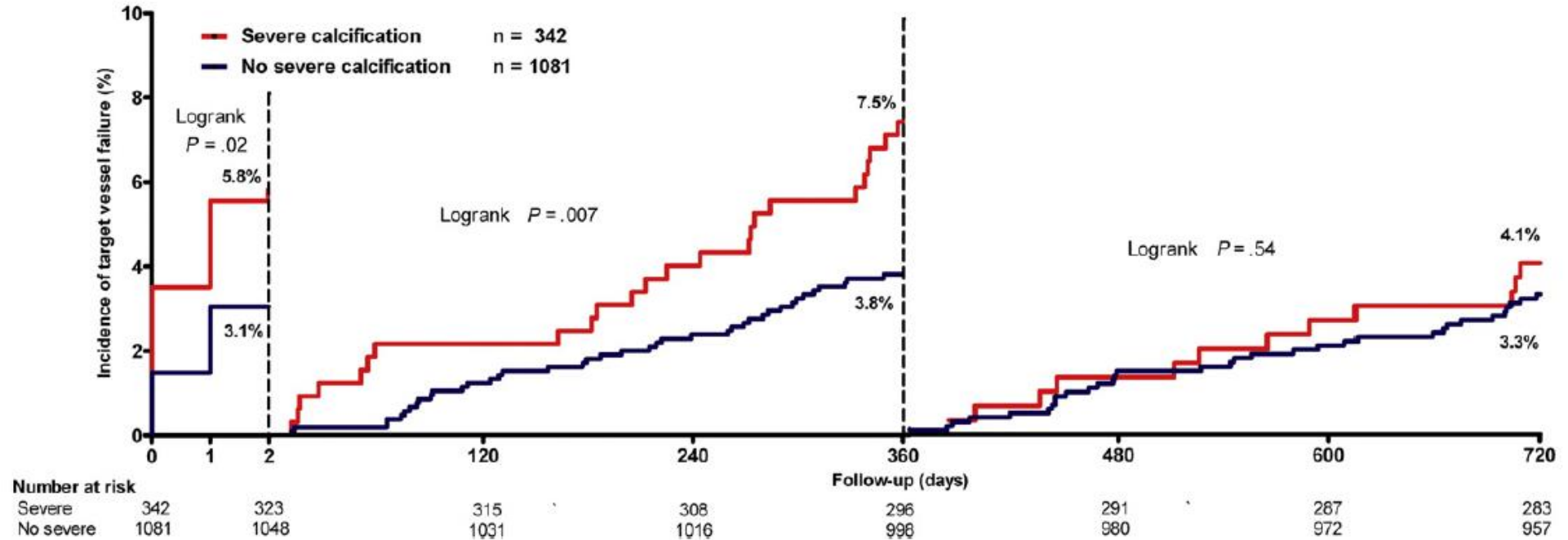
Stent Expansion in Calcified Lesions



*There was a similar, albeit less strong, correlation after 20 atm inflation ($r = -0.58$, $p = 0.0007$)

TWENTE and DUTCH PEERS (TWENTE II): Impact of Severe Calcification with 2nd Generation DES

1,423 pts with stable angina; 342 with severe calcification (24%)



At 2 years, TVF was 16.4% vs. 9.8%, $p=0.001$
predominantly driven by events in the first 48 hours and up to 1 year

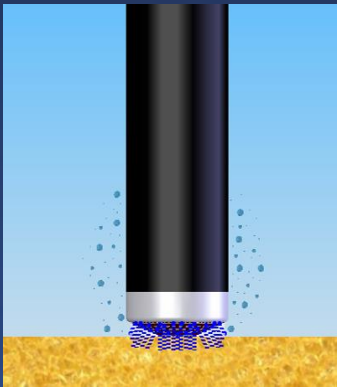
Of note, 2 year definite ST was 1.8% vs. 0.4%, $p=0.02$

Treatment of Calcified Lesions: Options

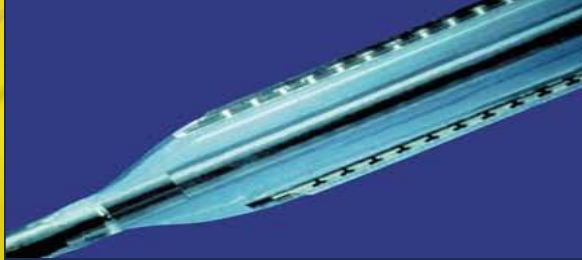
NC Balloons



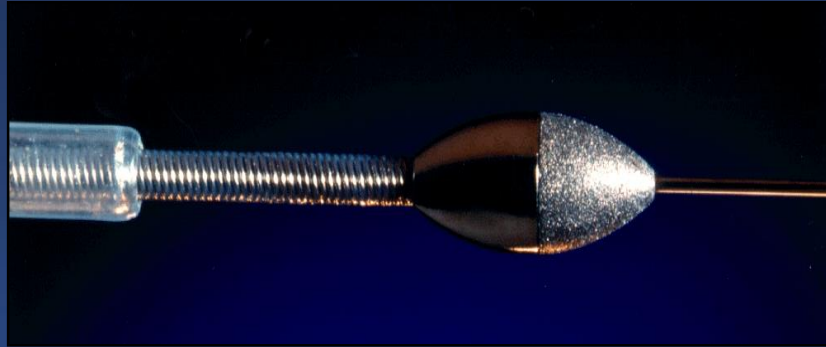
Laser



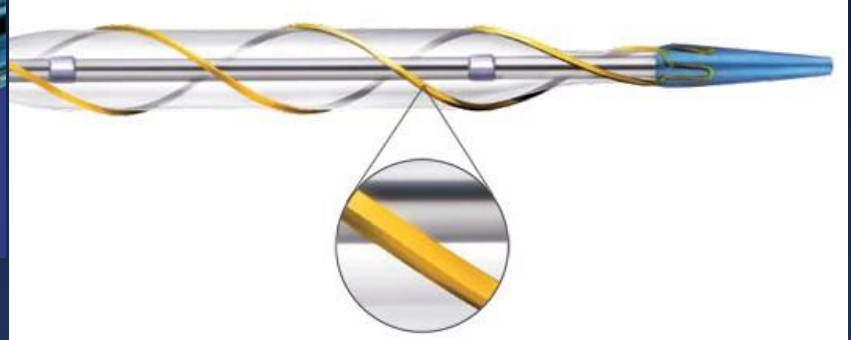
Cutting Balloon



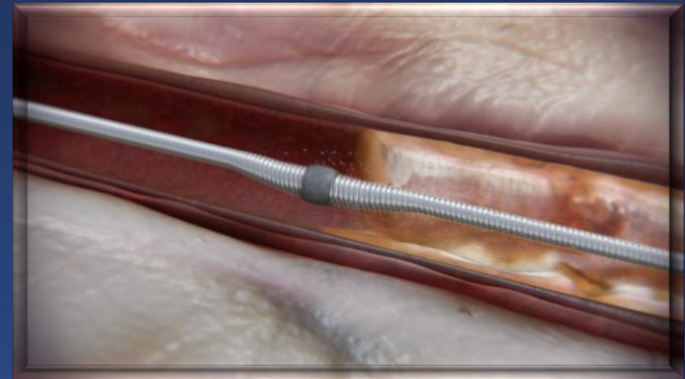
Rotational Atherectomy



Angiosculpt



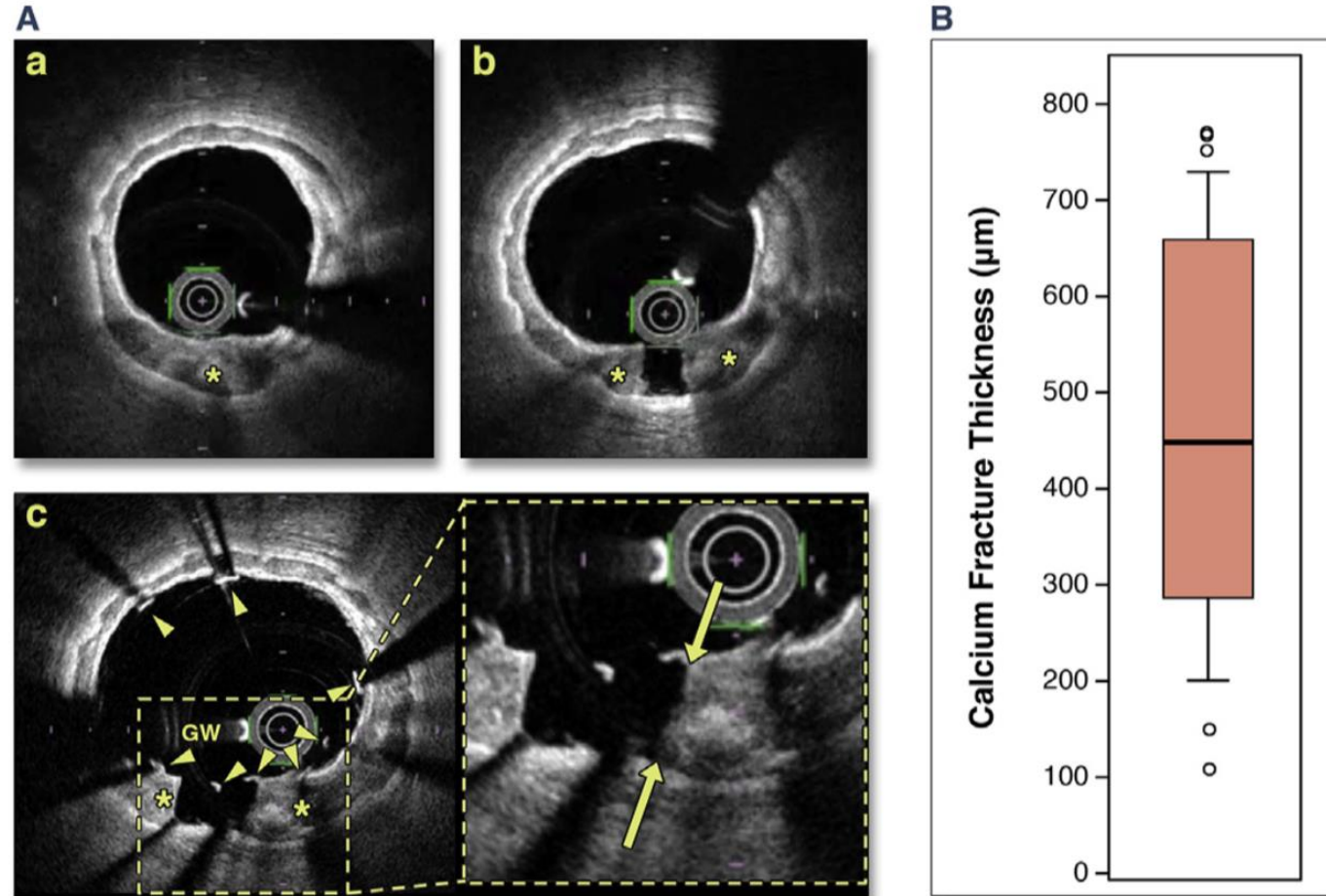
Orbital Atherectomy



Intravascular Lithotripsy

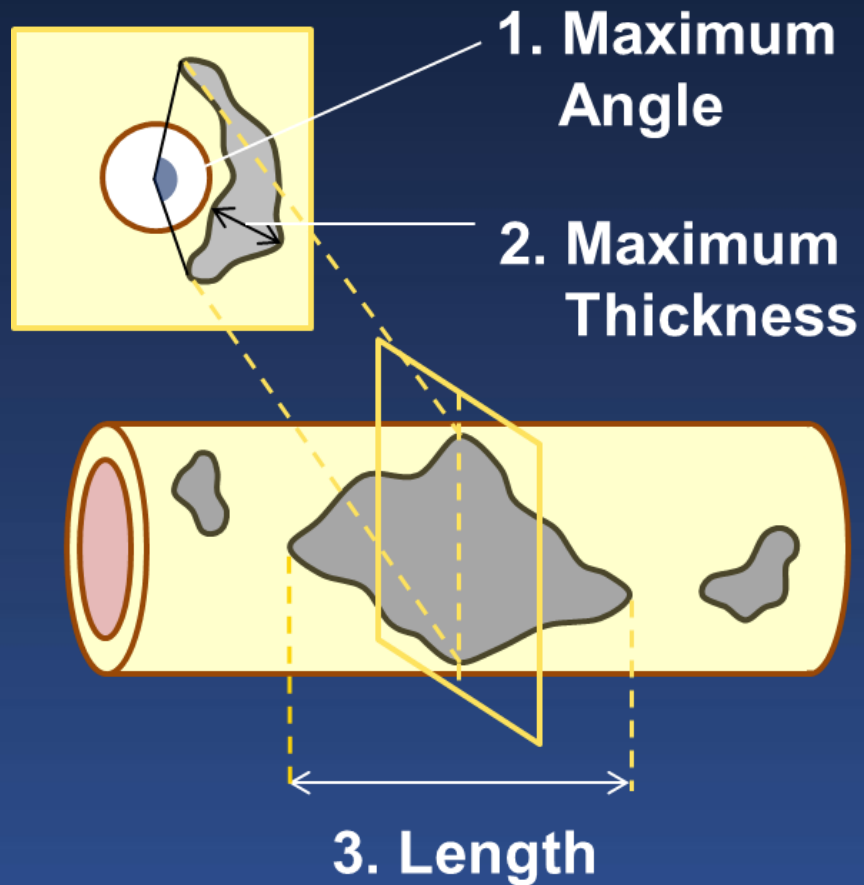
Calcium Fracture and Relation to Outcomes

61 pts with heavily calcified lesions studied serially with OCT
Fracture was seen in 48% (more frequently with CB or atherectomy)



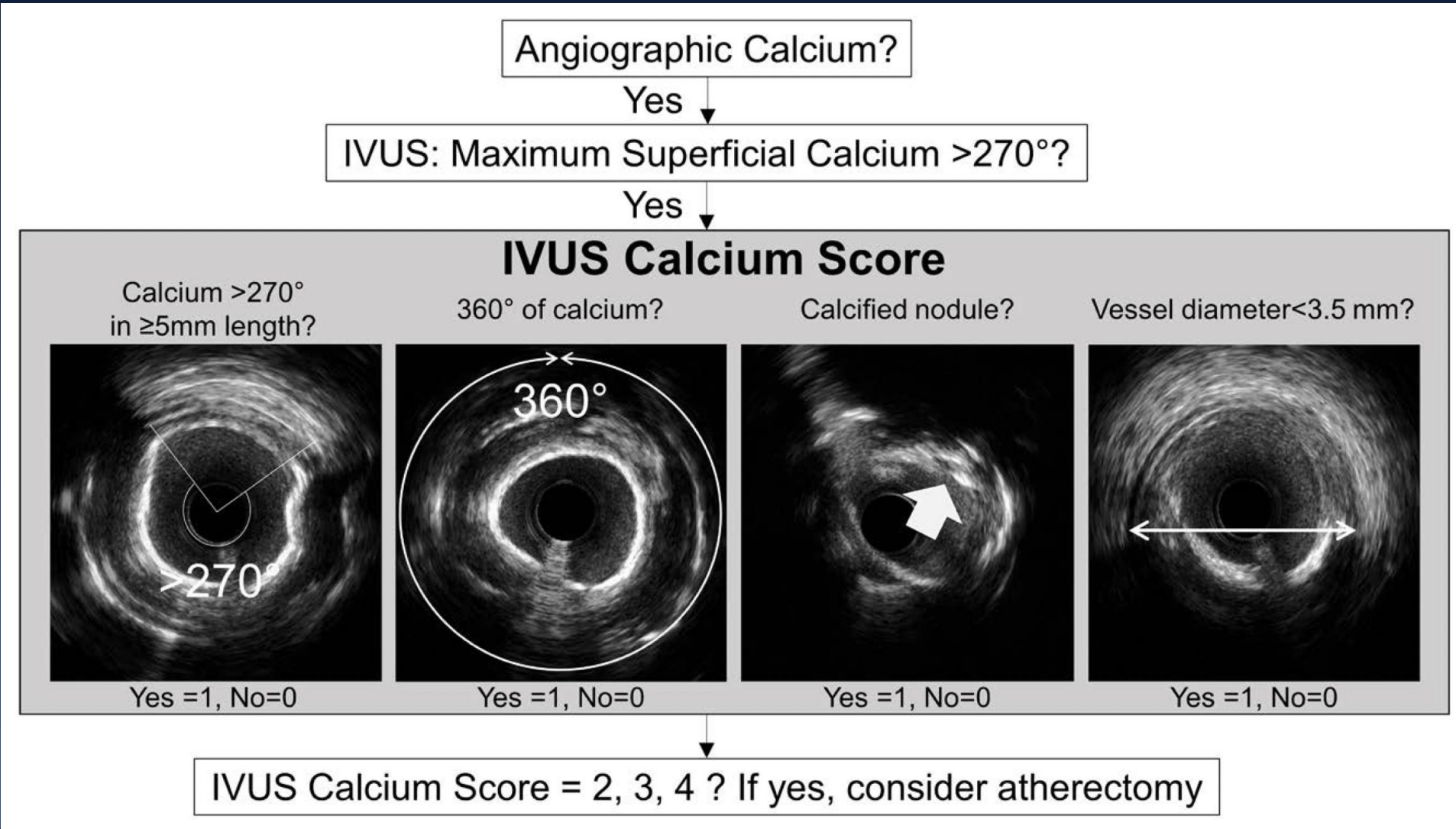
Fracture was associated with greater MSA and less restenosis/ID-TLR

Calcium Volume Index (CVI) Scoring System



OCT-based CVI Score	
Angle	$\leq 180^\circ$ → 0 point
	$> 180^\circ$ → 2 points
Thickness	≤ 0.5 mm → 0 point
	> 0.5 mm → 1 point
Length	≤ 5.0 mm → 0 point
	> 5.0 mm → 1 point
Total score: 0 to 4 points	

IVUS-Based Calcium Scoring System

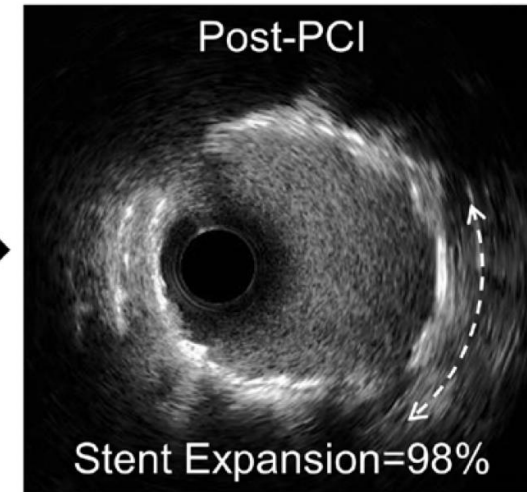
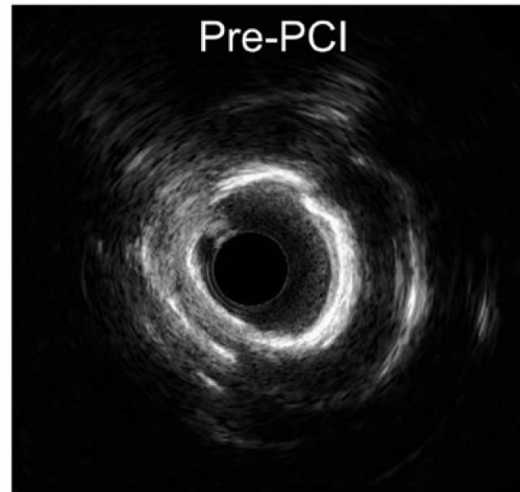


Calcium Scoring System (examples)

Case 1

- Length of Ca $>270^\circ$ = 4.1 mm = 0
- 360° of Calcium (+) = 1
- Calcified nodule (-) = 0
- Vessel diameter = 4.4 mm = 0

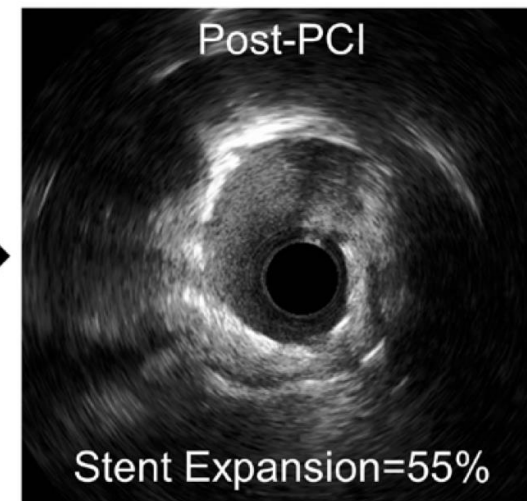
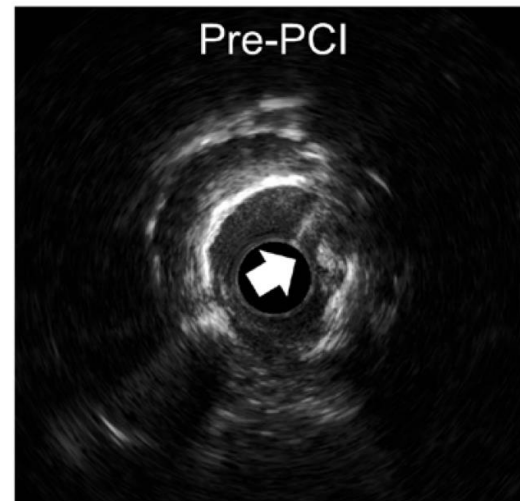
➔ **Calcium Score = 1**



Case 2

- Length of Ca $>270^\circ$ = 8.9 mm = 1
- 360° of Calcium (-) = 0
- Calcified nodule (+) = 1
- Vessel diameter = 2.9 mm = 1

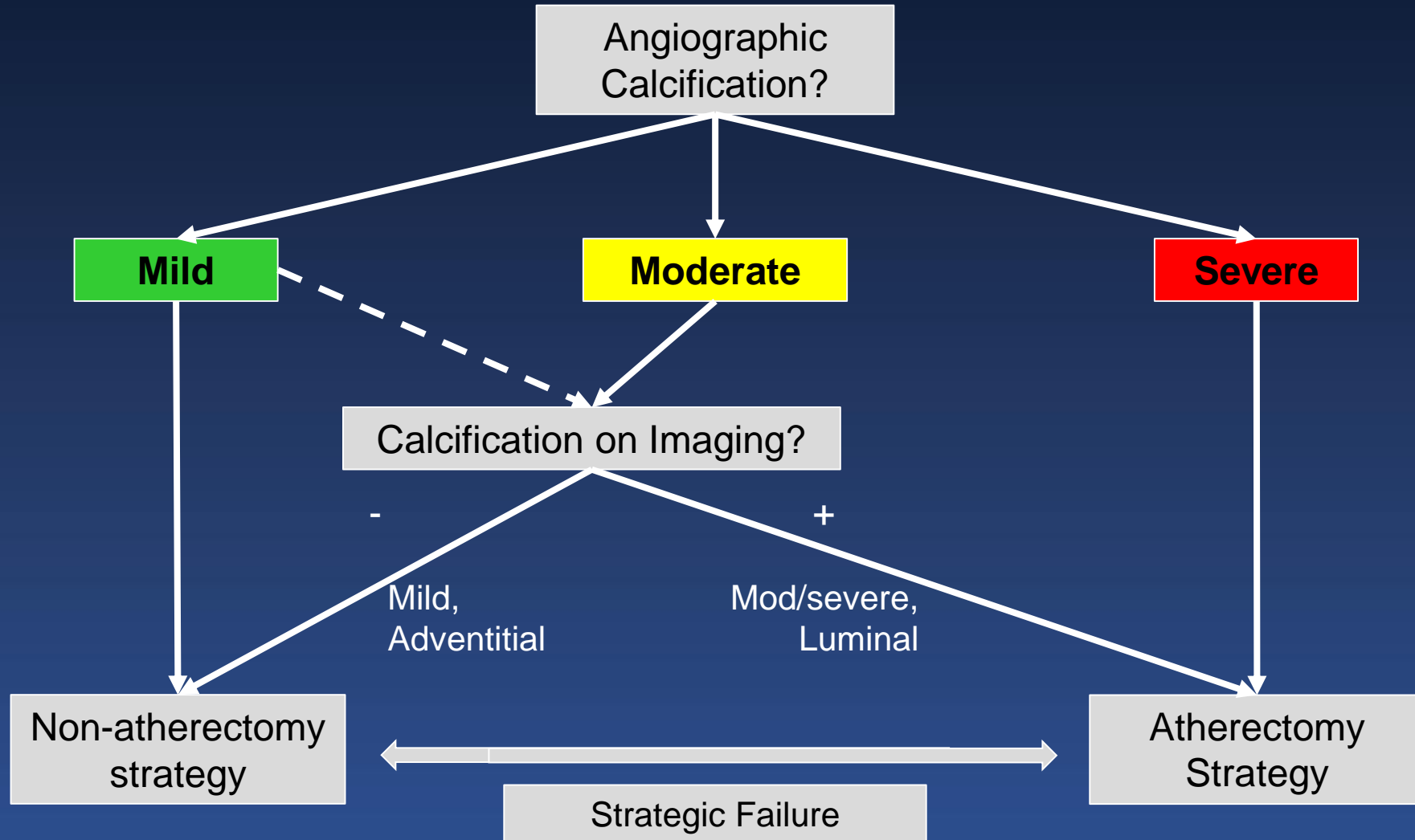
➔ **Calcium Score = 3**



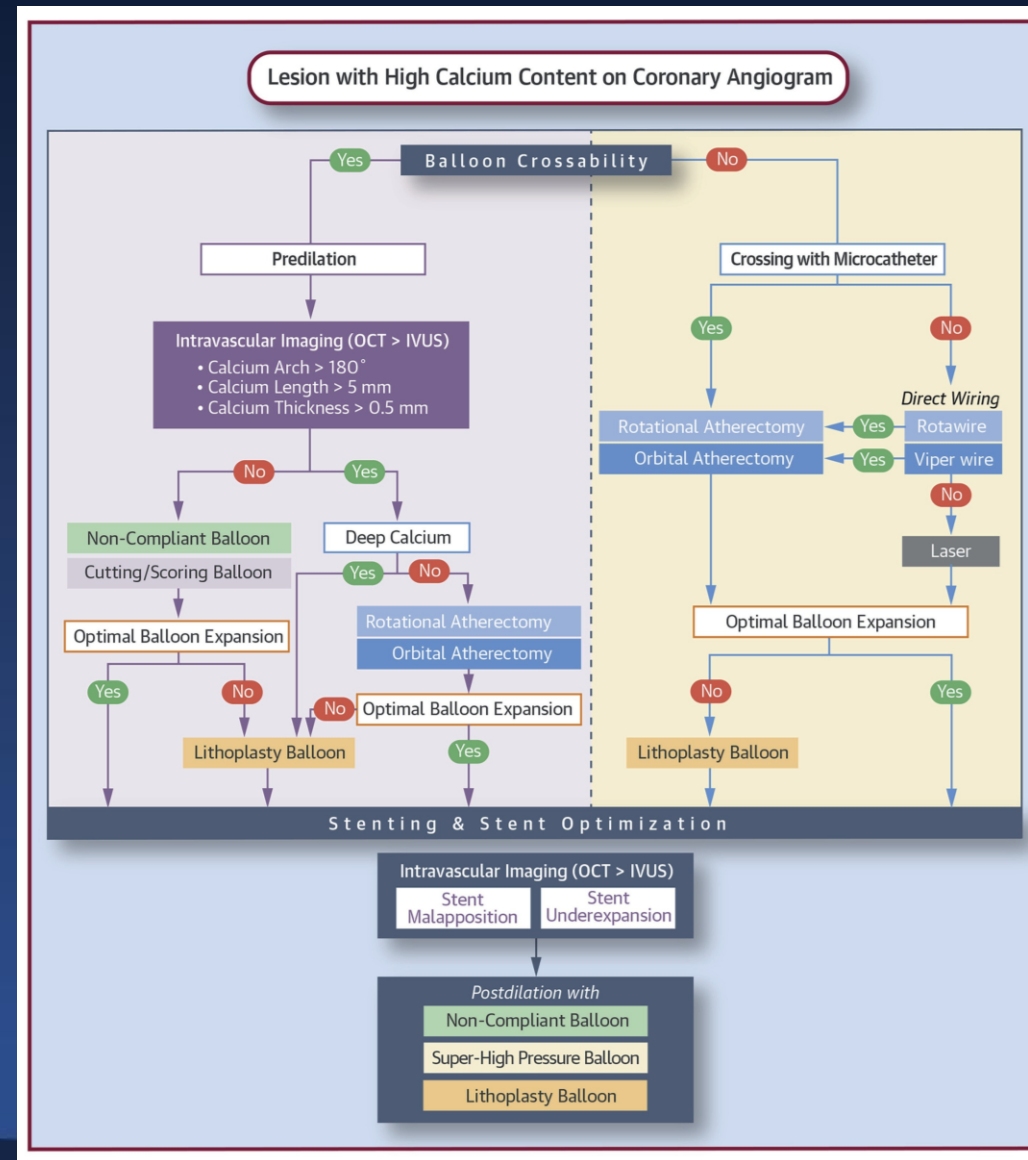
Treatment of Calcified Lesions: PCI guidelines

Device	ACCF/AHA/SCAI 2011	ESC/EAPCI 2014
Cutting/scoring balloon angioplasty	<ul style="list-style-type: none"> • Might be considered to avoid slippage induced coronary artery trauma during PCI for in-stent restenosis or ostial lesions in side branches (Class IIb-C) • Should not be performed routinely during PCI (Class III-A) 	May be useful in highly calcified, rigid ostial lesions (also applies to scoring).
Rotational atherectomy	<ul style="list-style-type: none"> • Reasonable for fibrotic or <i>heavily calcified lesions</i> that might not be crossed by a balloon catheter or adequately dilated before stent implantation (Class IIa-C) • Should not be performed routinely for de novo lesions or in-stent restenosis (Class III-A) 	Might technically be required in cases of tight and calcified lesions, to allow subsequent passage of balloons and stents.
Laser angioplasty	<ul style="list-style-type: none"> • Might be considered for fibrotic or moderately calcified lesions that cannot be crossed or dilated with conventional balloon angioplasty (Class IIb-C) • Should not be used routinely during PCI (Class III-A) 	(Laser not mentioned for calcification)

Strategy for Approaching Calcified Lesions

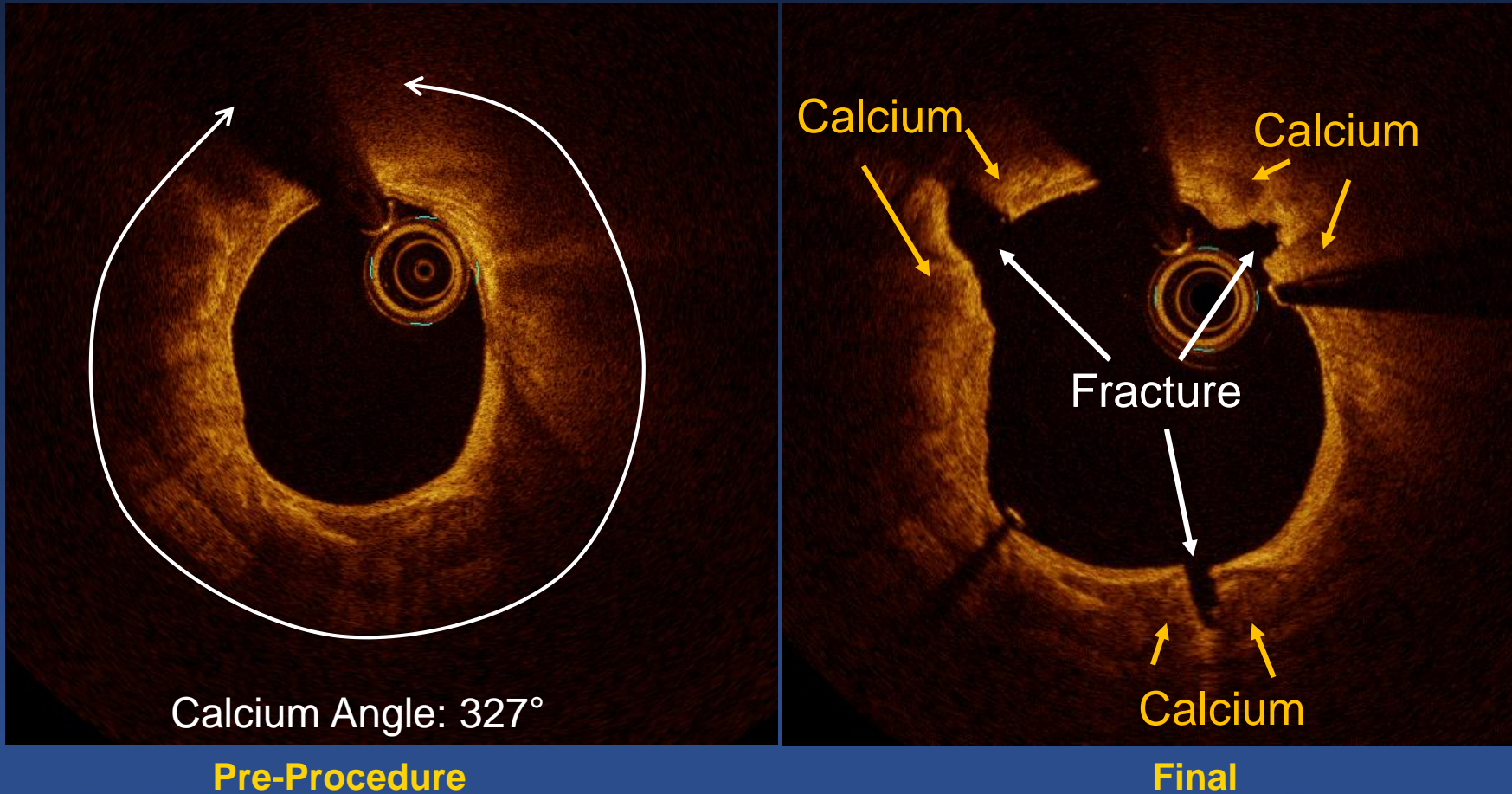


Algorithm for Approaching Calcified Lesions



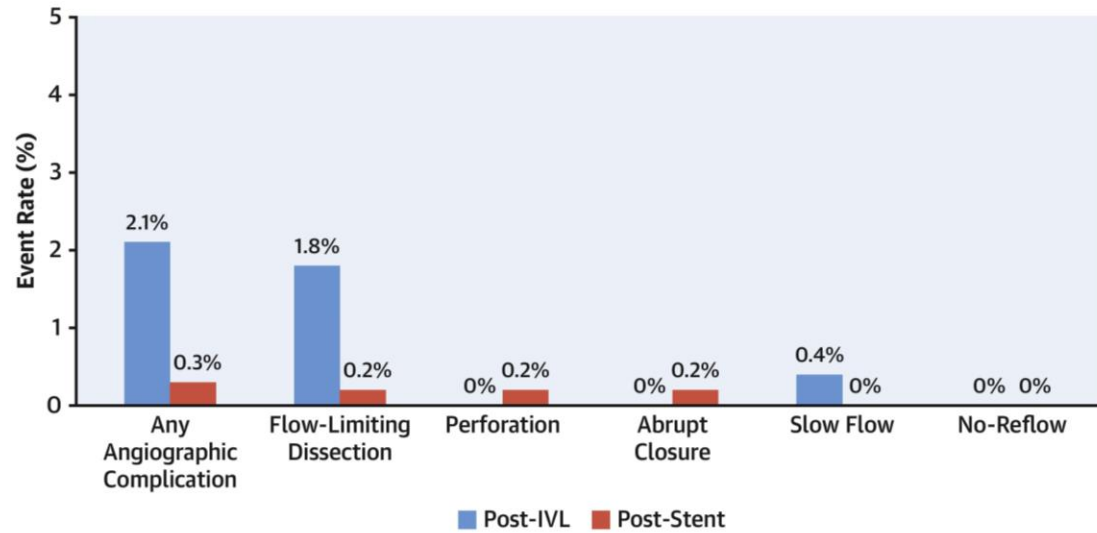
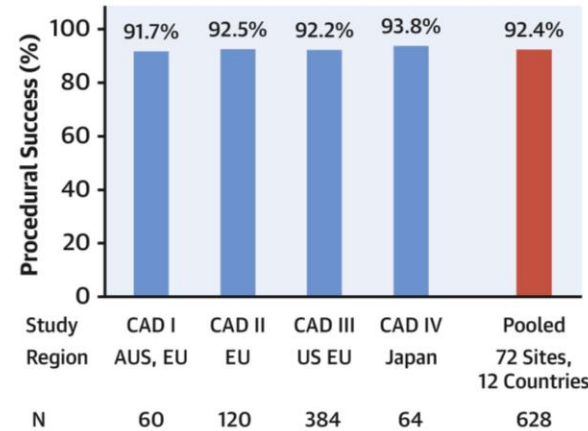
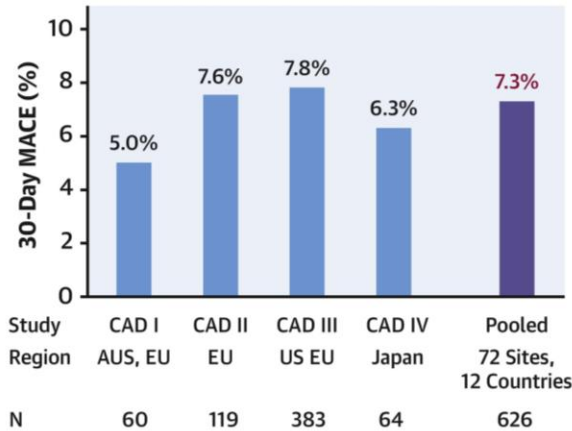
Mechanism of IVL

Circumferential Calcium Fracture



Brinton T, Ali Z, Hill J et al. TCT 2016. Disrupt CAD

Pooled Analysis of DISRUPT CAD Studies



628 patient pooled analysis of IVL

97% severe calcium

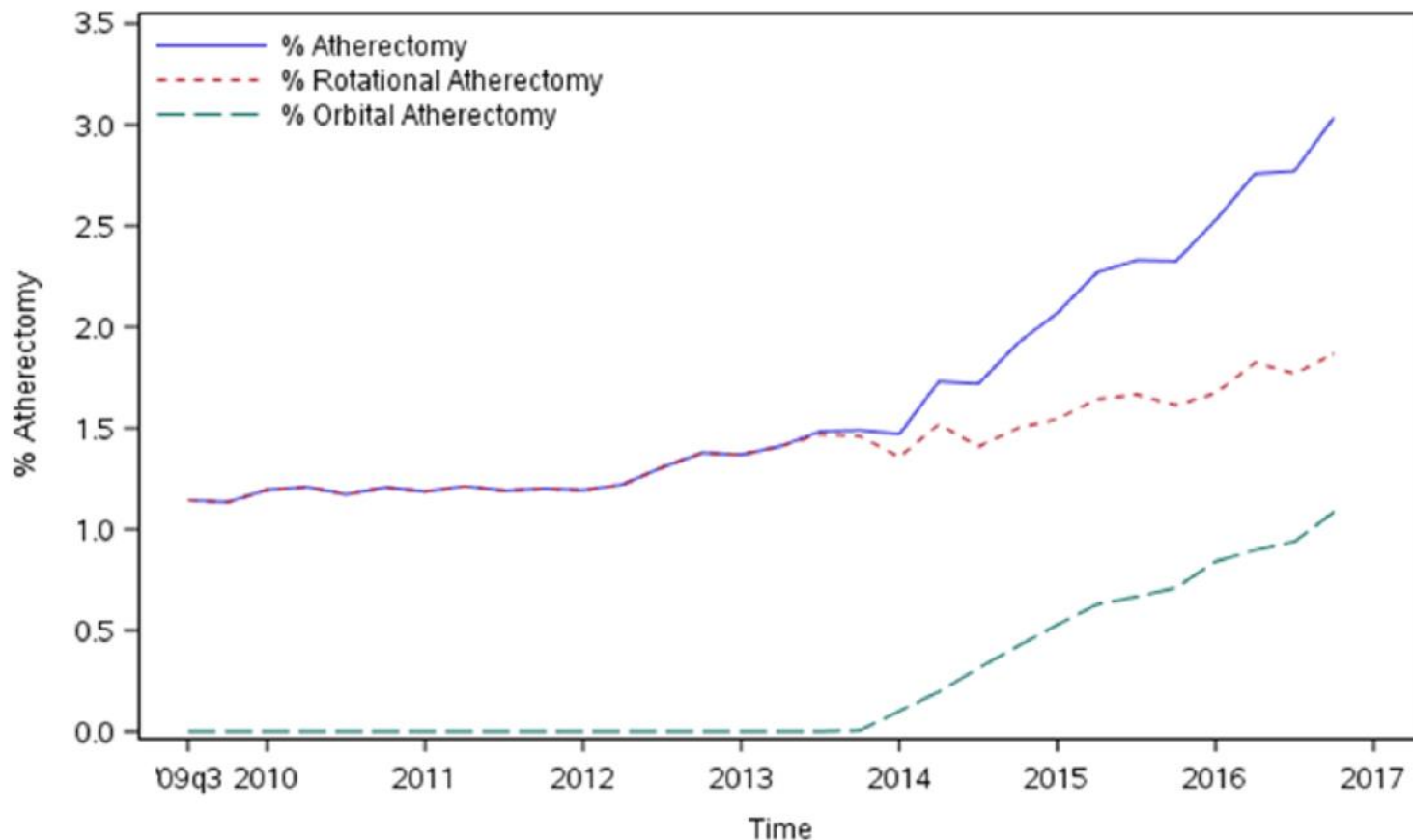
Mean 63.7% diameter stenosis

Predilation used in 47.6% of cases

IVL success in 98.7% of cases

NCDR: Quarterly Trends in Atherectomy Usage

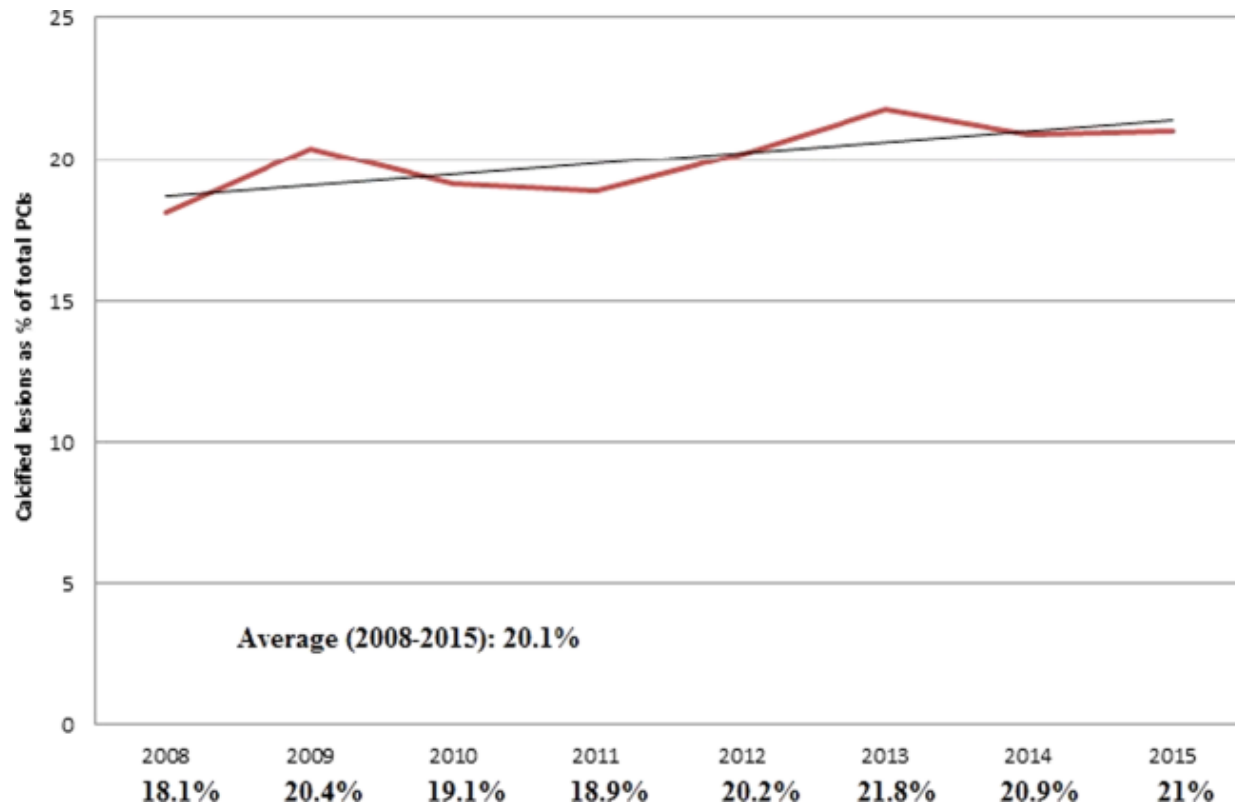
Among hospitals performing PCI, 34.5% performed no atherectomy
 Increased hospital atherectomy volume was associated with lower mortality



	N per year							
CA	2,529	5,997	5,975	6,388	7,283	8,938	12,321	15,602
PCI	222,170	501,650	499,032	501,995	506,377	522,145	547,677	563,331

Calcium in the VA-CART Registry

Series of 9,719 patients with 11,595 calcified lesions within the VA system
Prevalence of calcium in native single vessel (not STEMI) lesions increased over time



Atherectomy was used in 18% of single-vessel PCI cases of native calcific coronary artery lesions and was associated with a decrease in procedural/clinical complications

RotaPRO Rotational Atherectomy System



Design Goals:

- Easier to learn & use (no foot pedal)
- Easier to set up (consolidated cables)



Dynaglide activation button

Burr activation button on advancer knob

Brake release button

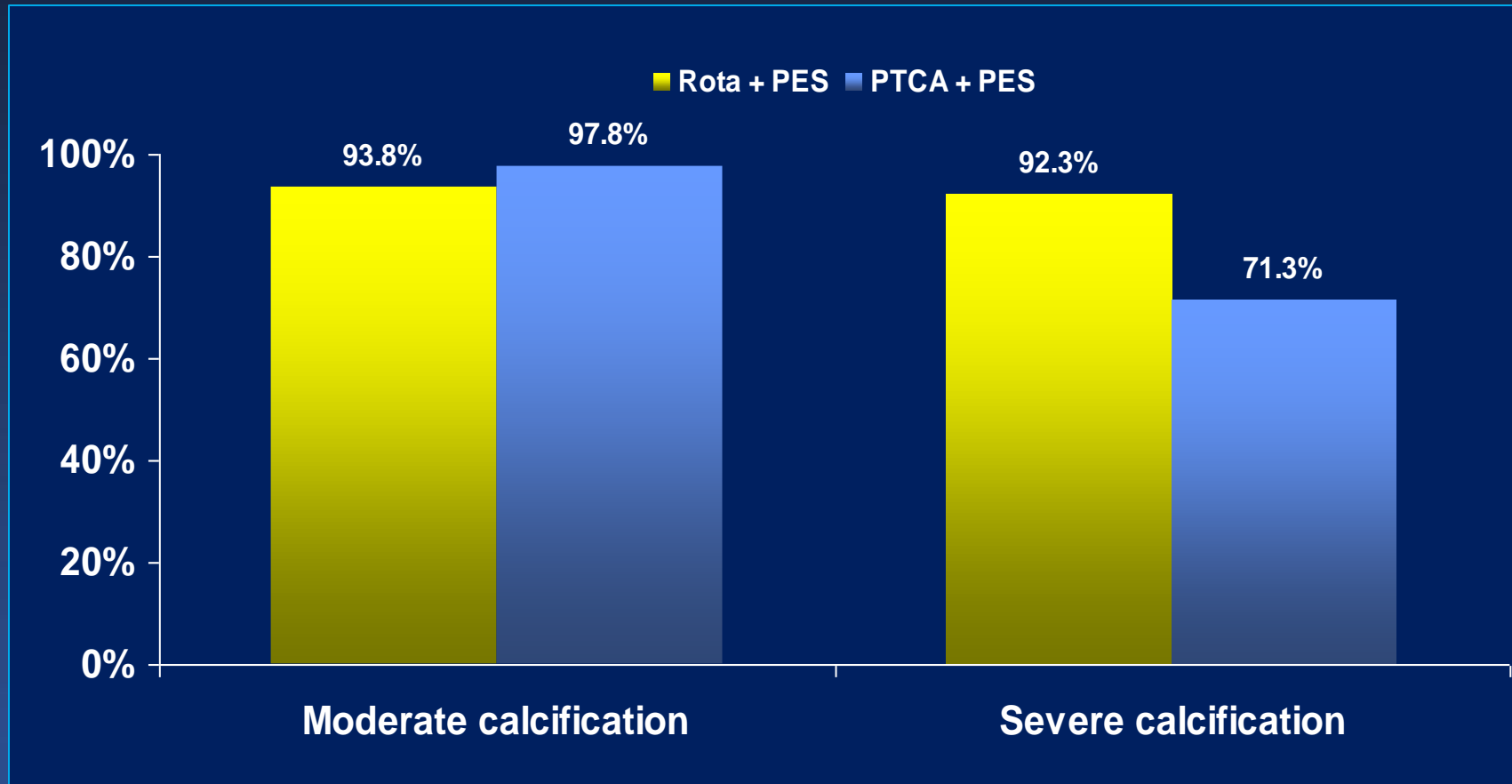
Dynaglide mode ON / OFF button



ROTATE: Procedural outcomes

	Planned ROTA n = 358 (433 lesions)	Provisional ROTA n = 309 (349 lesions)	p value
Total No. of pre-balloon			
Mean	1.17 ± 0.60	1.47 ± 0.76	< 0.001
0 (No pre-dilation)	27 (7.6)	7 (2.1)	< 0.001
1	251 (70.7)	211 (62.6)	
2	65 (18.3)	74 (22.0)	
>3	12 (3.4)	45 (13.4)	
Maximum pre-balloon size	2.66 ± 0.48	2.60 ± 0.43	0.09
Total No. of post-balloon			
Mean	1.12 ± 0.43	1.10 ± 0.44	0.65
0 (No post-dilation)	12 (2.8)	12 (3.5)	0.73
1	355 (83.9)	292 (84.6)	
2	51 (12.1)	35 (10.1)	
>3	5 (1.2)	6 (1.7)	
Maximum post-balloon size	3.27 ± 0.62	3.12 ± 0.52	< 0.001
Final TIMI flow 3	430 (99.8)	345 (99.1)	0.33
Procedure time, min	65.2 ± 36.8	84.4 ± 43.1	< 0.001
Fluoroscopy time, min	33.1 ± 22.9	51.2 ± 29.6	< 0.001
Contrast volume, ml	232.9 ± 141.6	302.9 ± 150.3	< 0.001

ROTAXUS: Strategy Success according to calcification



Primary Endpoint – Strategy Success

	Modified balloon (n = 100 pts.)	Rotational atherectomy (n = 100 pts.)	p-value
Strategy success	81 (81%)	98 (98%)	0.0001
Final TIMI flow < III	0 (0%)	1 (1%)	0.99
Residual stenosis >20%	2 (2%)	0 (0%)	0.49
Stent failure	4 (4%)	1 (1%)	0.36
Crossover	16 (16%)	0 (0%)	<0.0001

200 patients, elective PCI, native coronaries, severe calcification

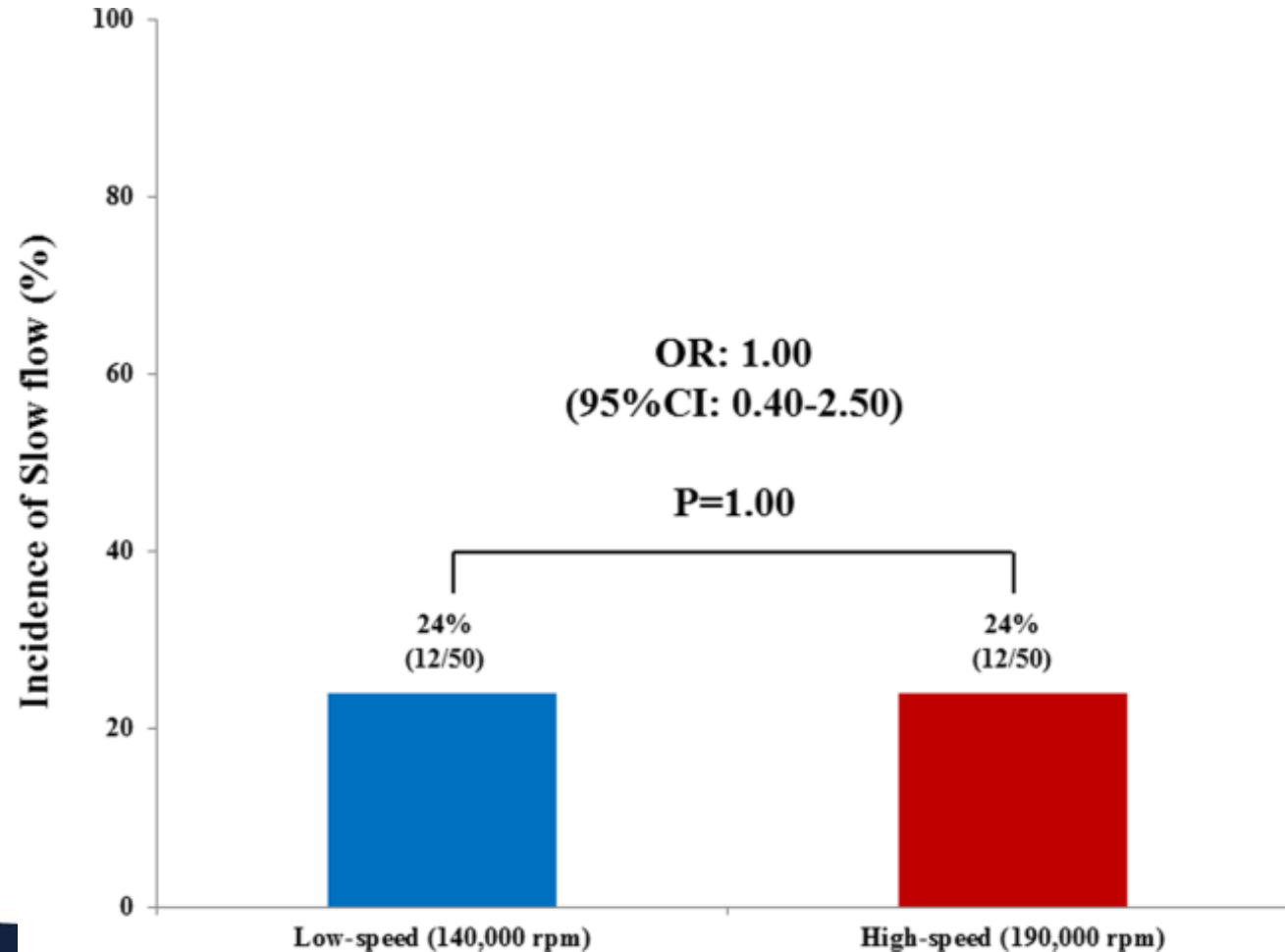
2 German centers (Bad Segeberg, Munich)

Low vs. High Speed for Rotational Atherectomy

100 patient RCT of 140,000 rpm vs. 190,000 rpm, mostly 1.25 mm single burrs

Total run time of 120 seconds; mean run time of ~20 seconds

Only 6% of patients needed higher burr speed than assigned



DIAMONDBACK 360: Coronary Orbital Atherectomy System

Device Features

- Simple device setup
- Microsecond feedback to changes in loading
- 135cm usable length

On-handle speed control

- Low (80K) and High Speed (120K)

Power on/off switch

- 8 cm axial travel

Electric motor powered handle

Eccentric diamond coated crown

6Fr Guide Compatible

Saline Infusion Pump

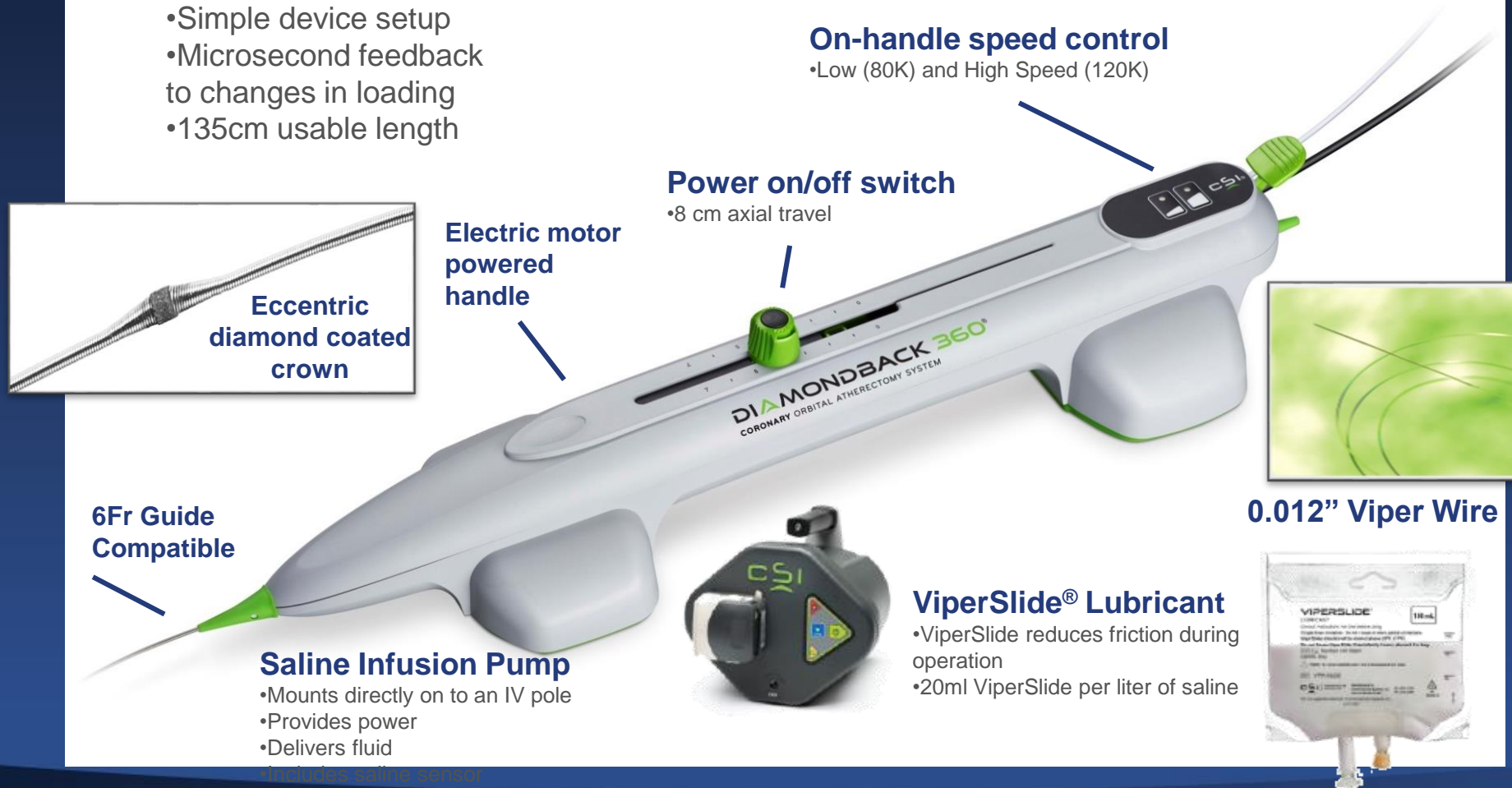
- Mounts directly on to an IV pole
- Provides power
- Delivers fluid

• Includes saline sensor

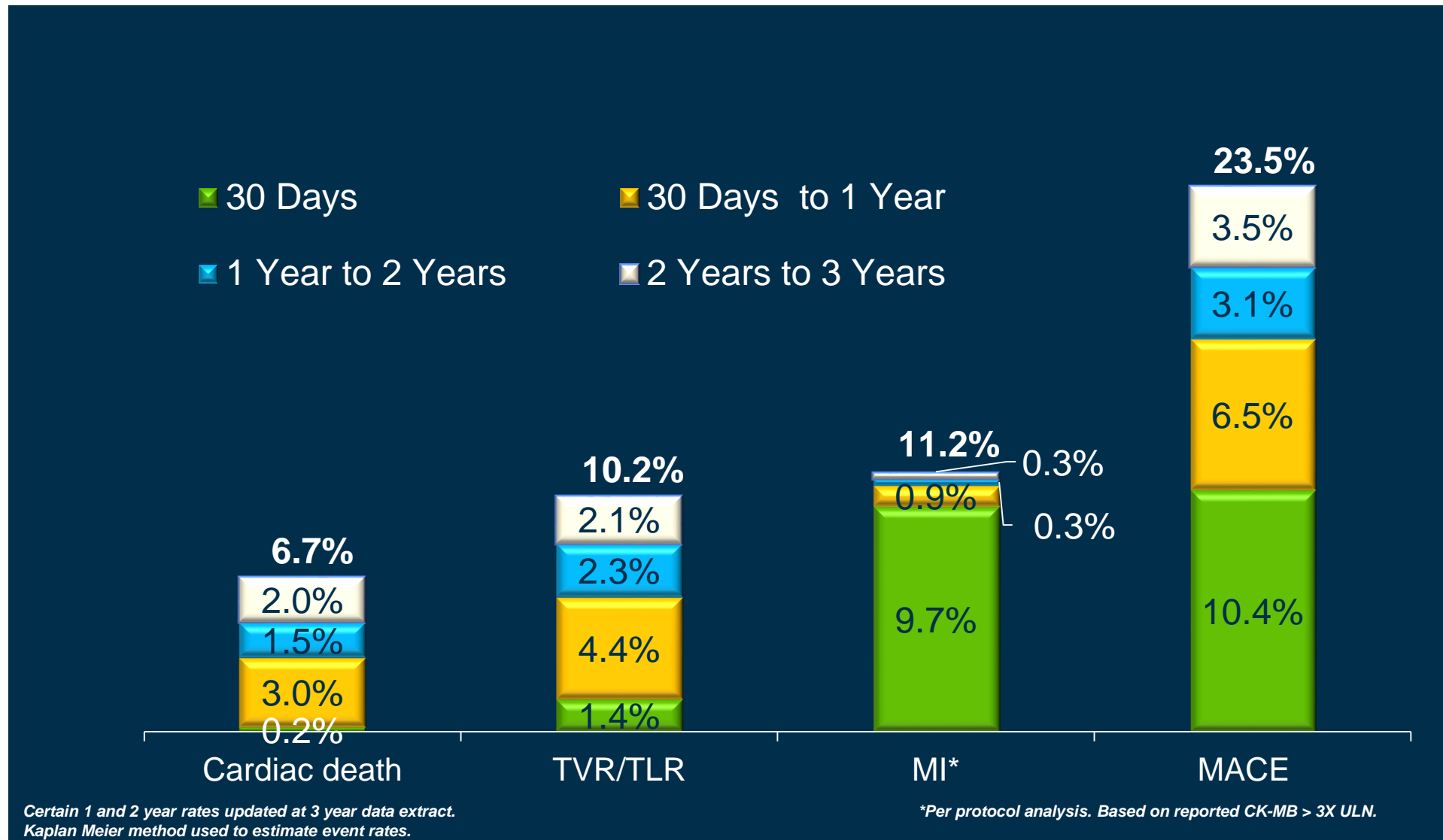
0.012" Viper Wire

ViperSlide® Lubricant

- ViperSlide reduces friction during operation
- 20ml ViperSlide per liter of saline



ORBIT II: Late Outcomes



Mt. Sinai Miami Observational Registry

519 patient retrospective, single arm study

Lesion Characteristics			
AHA/ACC Type C lesions	53.8%		
Mean treated length	22.6 mm		
Mean diameter stenosis	86.9%		
Safety			
Angiographic complications:			
Severe dissection (C-F)	0.4% ¹		
Perforation	0.8%		
Persistent slow-flow/ no-reflow post-procedure	0.0%		
In-Hospital MI	0.8% ¹		
Results by Treatment Tertile			
	1 st	2 nd	3 rd
MACE (p=1.0)	1.2%	1.7%	1.2%
Cardiac Death (p=1.0)	0.6%	1.1%	0.6%
MI (p=0.33)	0.6%	1.7%	0.0%

Relative Advantages of OAS and RA

OAS
(0.012" wire, 2 choices)

- Hardware/set-up
- Faster learning curve
- Single device for all lesions/
vessel diameters
- Full 6 Fr compatibility
(including guide extension)
- Hemodynamic stability
(less slow flow/pacer?)
- +/- distal/multiple lesions
using low speed glide assist

RA
(0.009" wire, 2 choices)

- Aorto-ostial lesions
- Severe angulation/bias
- Subintimal crossing
- Front cutting for
uncrossable lesions
- ISR/underexpansion for
stent ablation
- Specific scenarios with
need for 2.0+ mm burr
- Lower cost of single device

Either can be used in most cases of severe calcium!



ECLIPSE

Evaluation of Treatment Strategies for Severe **C**alcific Coronary Arteries: Orbital Atherectomy vs. Conventional Angioplasty **P**rior to Implantation of Drug Eluting **S**tents

~2000 pts with severely calcified lesions; ~150 US sites

Randomize

1:1

Orbital Atherectomy Strategy

(1.25 mm Classic Crown followed by balloon pre-dilation)

Conventional Angioplasty Strategy

(Conventional and/or specialty balloons per operator discretion)

2nd generation DES implantation and optimization

2nd generation DES implantation and optimization

1° endpoints: 1) Post-PCI in-stent MSA by OCT (N~500 in imaging sub-study)
2) 1-year TVF (all subjects)

2° endpoints: 1) Procedural Success (Stent deployed w/RS<20% & no maj complications)
2) Strategy Success (Procedural success w/out crossover)

Patients are enrolled at physician discretion with post-procedure calcium confirmation by the Core Lab

Principal investigators: Ajay J. Kirtane, Philippe Généreux; **Study chairman:** Gregg W. Stone

Sponsor: Cardiovascular Systems Inc.

Conclusions

- Coronary calcium is becoming more and more prevalent in the modern-day cath lab / CHIP era
 - Aging population
 - Comorbidities
 - “Downstream” presentations
- Calcified lesions are among the highest-risk lesions we treat
 - Short-term pain/suffering + risk
 - Longer-term outcomes

Conclusions

- Imaging is a MUST
 - Diagnosis of calcium
 - Treatment algorithms (based upon length, arc, thickness)
 - After initial lesion preparation / prior to stent implantation
 - Stent optimization
- The field of adjunctive therapies for calcific lesions is heating up with more and more data emerging soon...