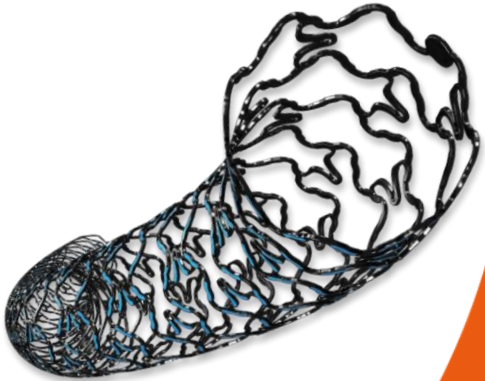


*Advancing PCI outcome in diabetics with the
innovative Cre8™ EVO DES*

CRE8™
EVO



PCI with Cre8™ EVO in a T2DM patient

Daniel Aradi, MD PhD FESC
Head of Interventional Cardiology Unit
Heart Center Balatonfüred
HUNGARY

Disclosure statement

Within the past 12 months, I or my spouse/partner have had a financial interest/arrangement or affiliation with the organization(s) listed below.

Affiliation/Financial Relationship

Lecture fees

Company

Alvimedica

Bayer

Boehringer Ingelheim

MSD Pharma

Organon

Pfizer

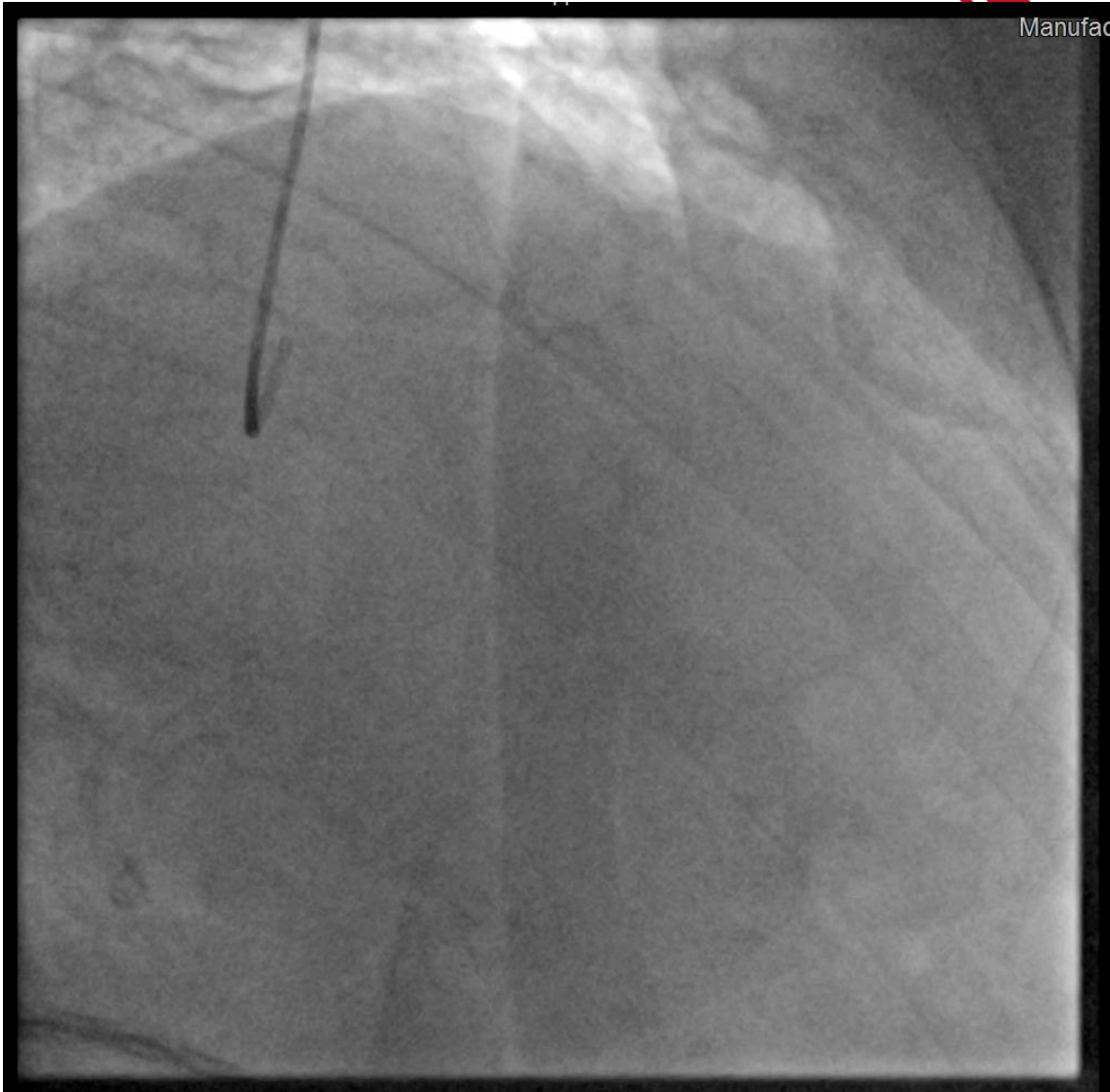
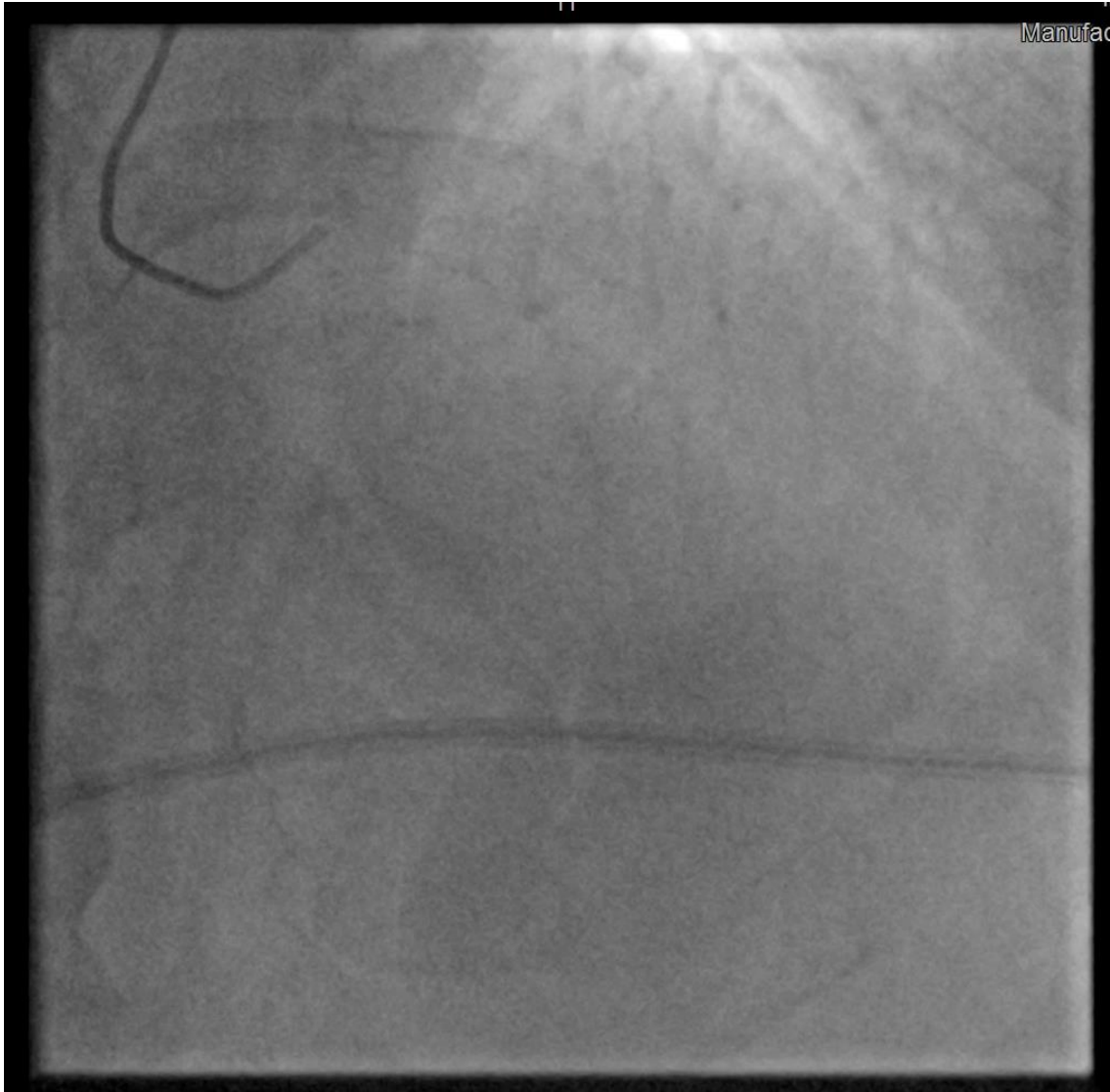
HISTORY

- Gender: Male
- Age: 68 ys
- Height: 174 cm. Weight: 76 kg. BMI: 25.1 kg/m².
- CV risk factors:
 - T2DM (7 ys)
 - Hipertension (15 ys)
- Previous MI: NO
- Previous PCI/CABG: NO
- Rx: aspirin 1x100 mg, perindopril 1x5 mg, pantoprazole 1x20 mg, metformin 2x1000 mg.

CURRENT PRESENTATION (August 2021): NSTEMI

- Typical chest pain at rest
- ECG: Sinus rhythm, HR: 53/min, II-III-aVF: negative T waves
- Lab:
 - hsTrop: 131 ng/ml.
 - Hgb: 13.9 g/dl
 - eGFR: 81 ml/min/1.73m²
- Echo:
 - EF: 55%, inferior hypokinesis

CORONARY ANGIOGRAPHY



LAD: long, calcified, diffusely diseased lesion, CTO?

CORONARY ANGIOGRAPHY



Manufac

RCA PCI



Guidewire passage, aspiration thrombectomy



CRE8 EVO 3.0 x 33 mm

RCA PCI

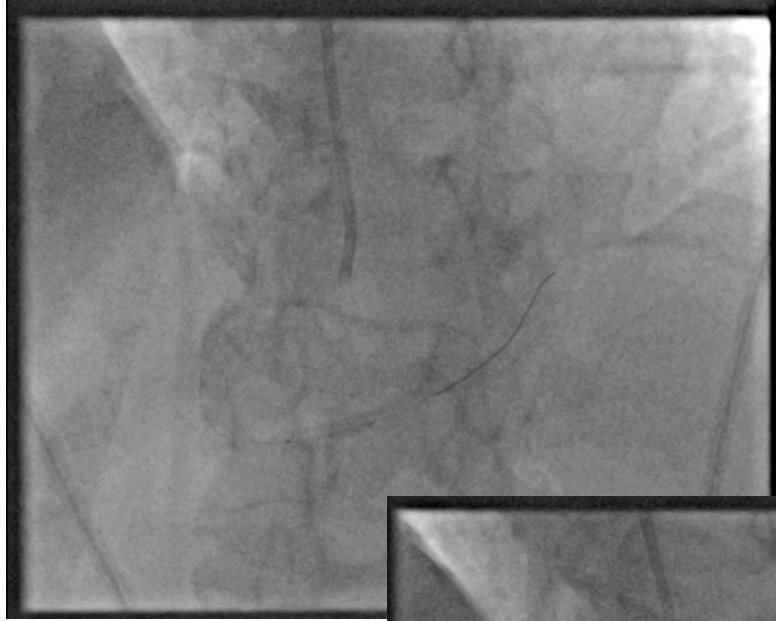


After distal stent implantation



CRE8 EVO 3.5 x 46 mm

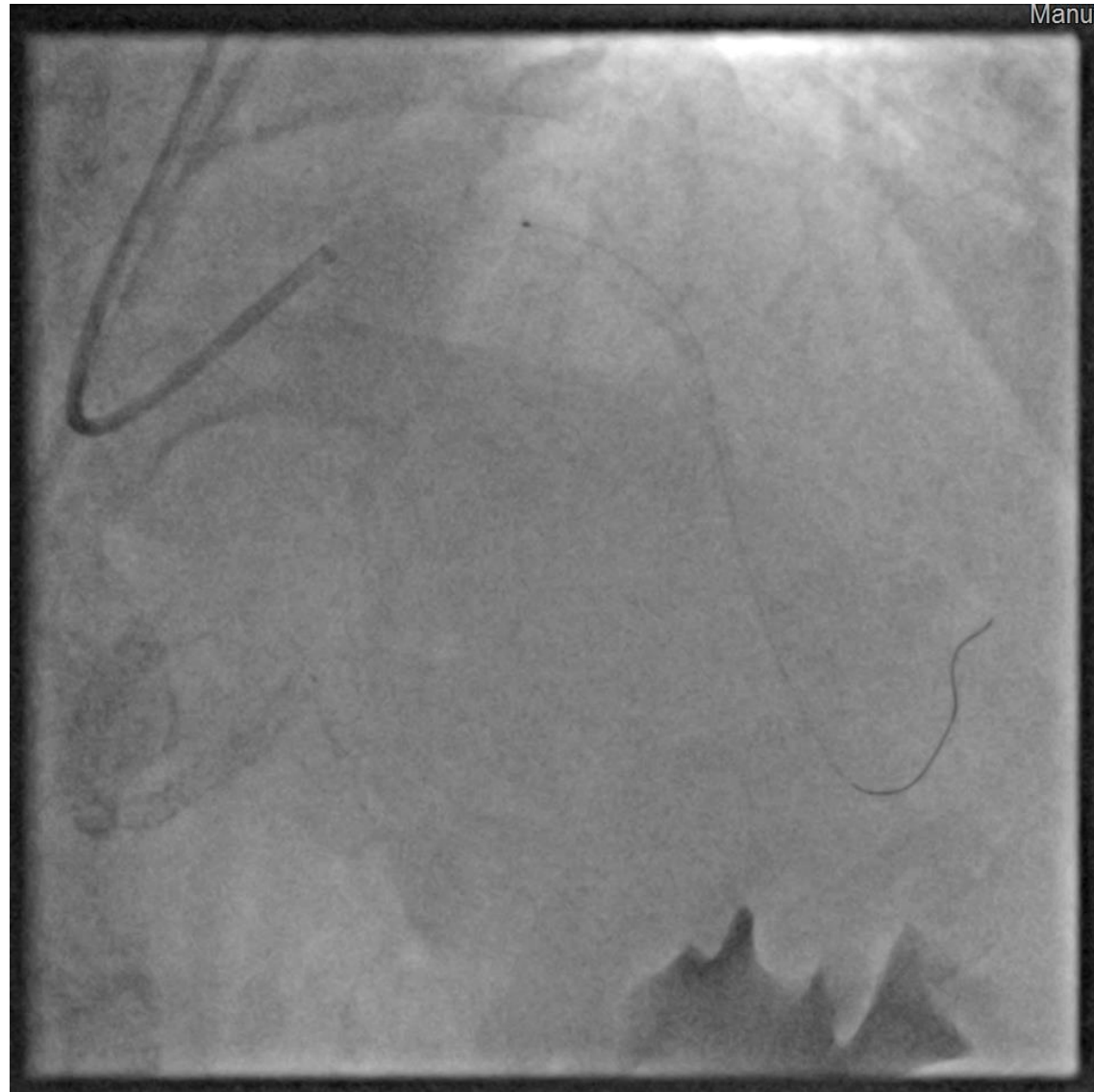
RCA PCI



High pressure NC post-dilations 3.5x20 mm, 22 atm

Final result of the RCA PCI with 2 CRE8 EVO

LAD attempt



Guidewire crosses LAD occlusion, but
1.0 x 10 mm balloon fails to pass

CLINICAL COURSE POST PCI

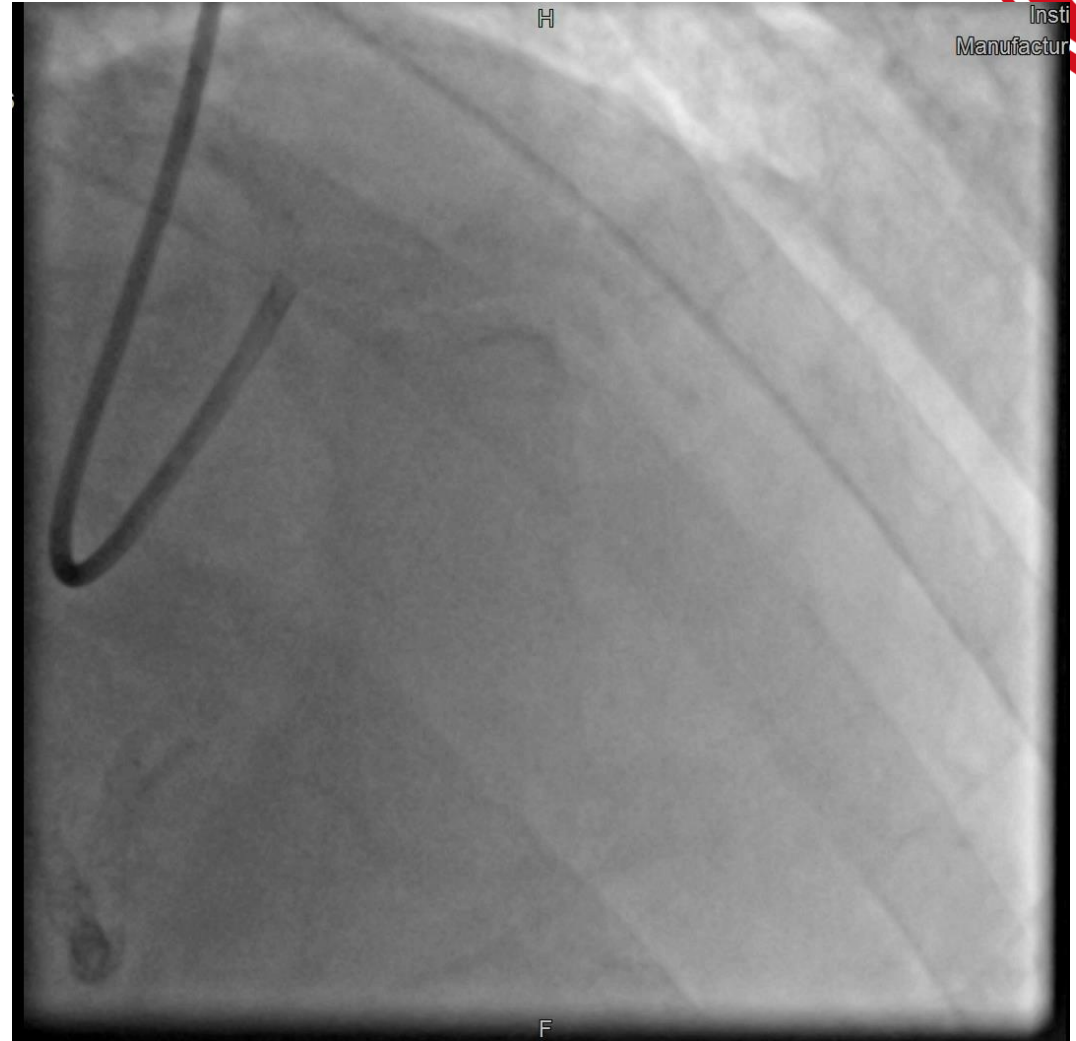
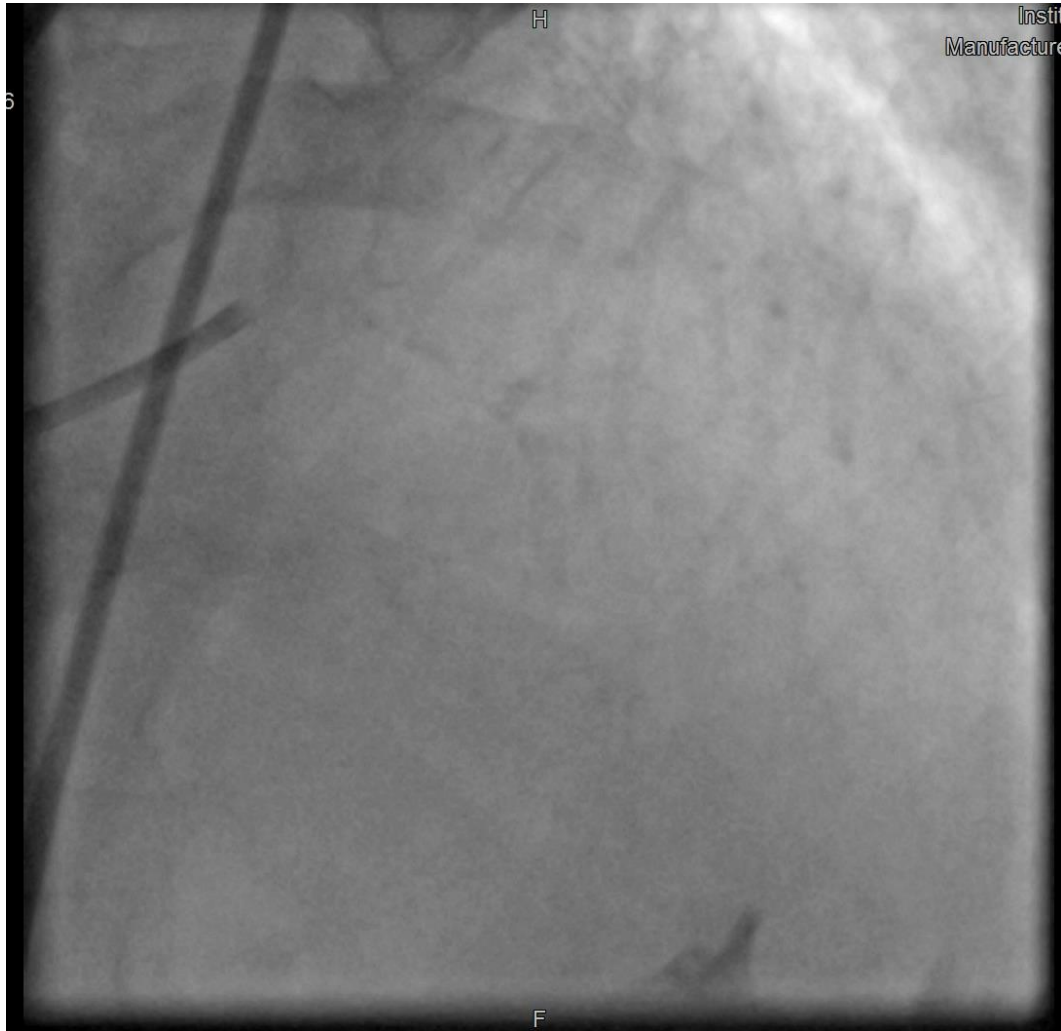
- No complication, patient became symptom-free
- CK, CKMB: normal, peak hsTroponin: 580 ng/ml.
- MRI: EF: 53%, subendocardial late enhancement in infero-basal and mid segments, LAD territory viable
- Due to effort angina:
- Decision to re-attempt LAD CTO PCI, 4 months after the first PCI

RCA PCI results at 4 months

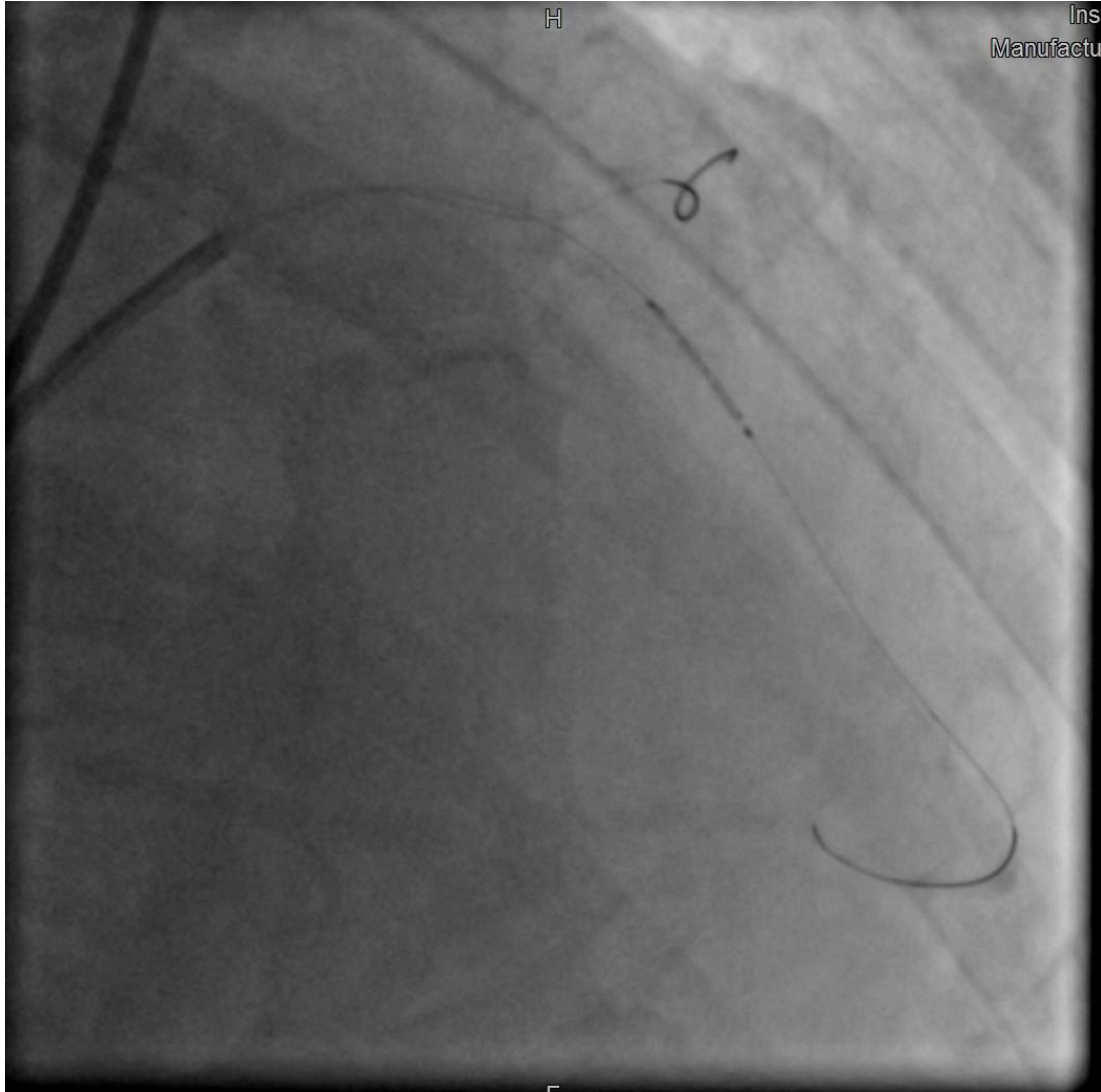


Good result in CRE8 EVO 3.5 x 46 mm and CRE8 EVO 3.0 x 33 mm

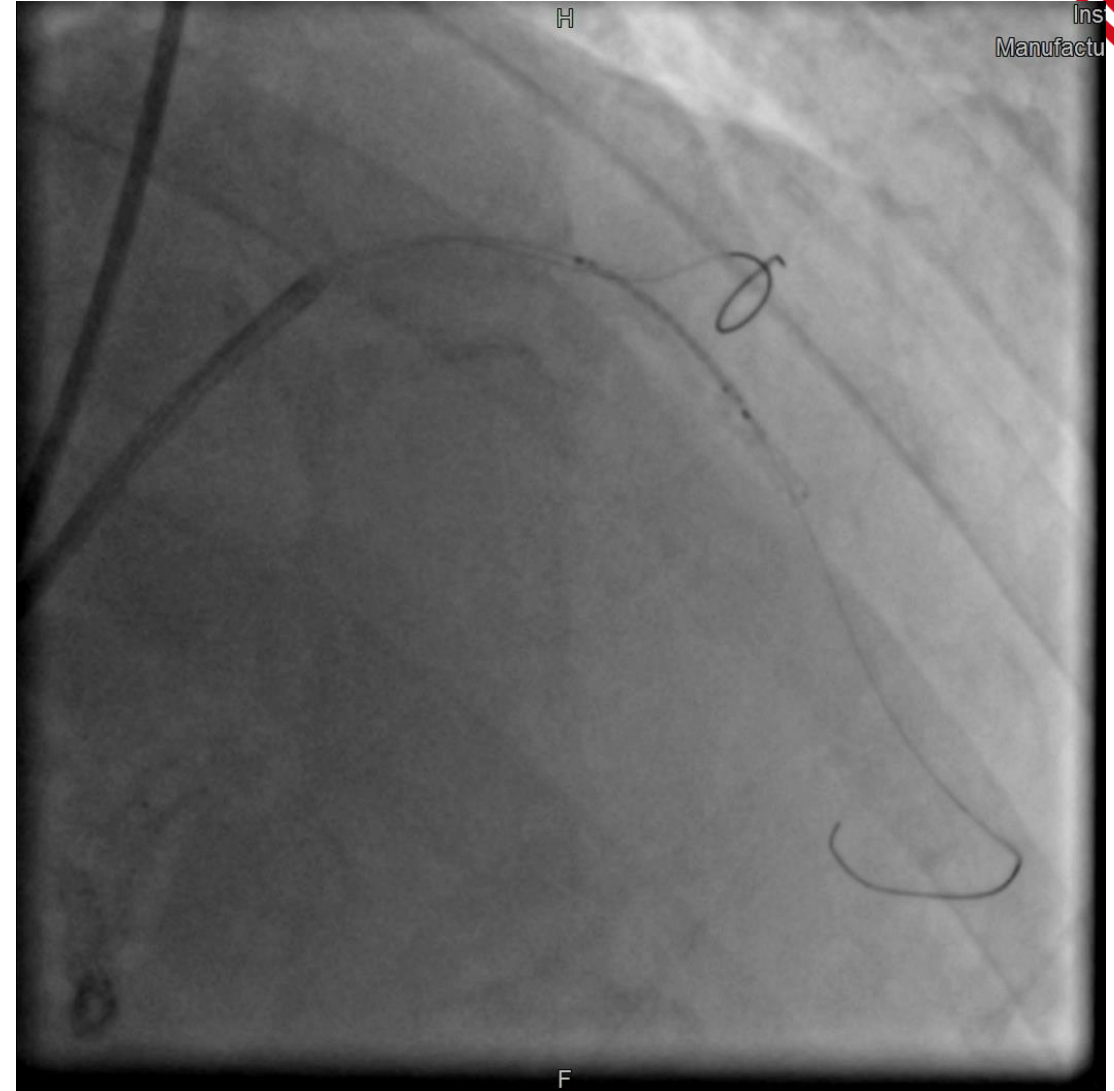
LAD CTO PCI



LAD CTO PCI

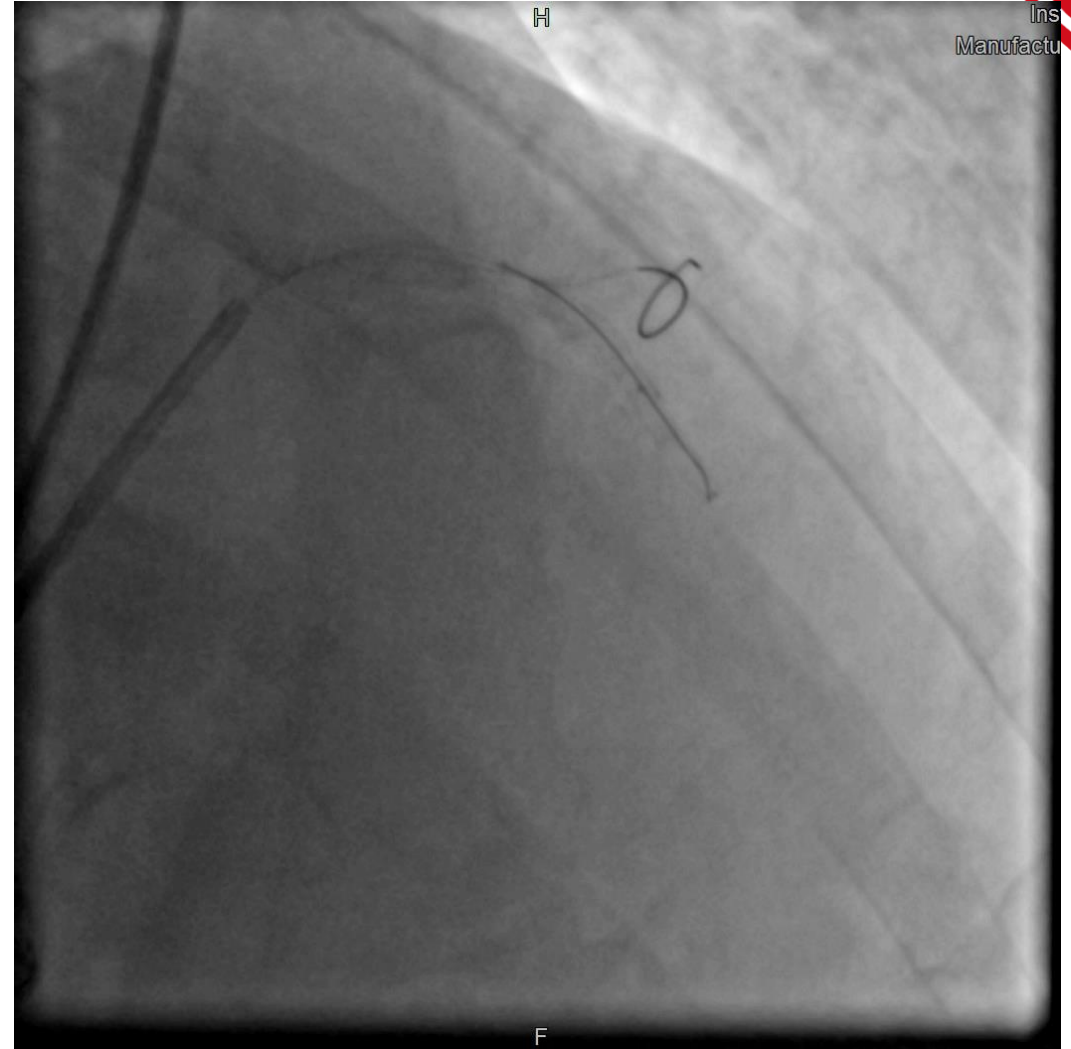
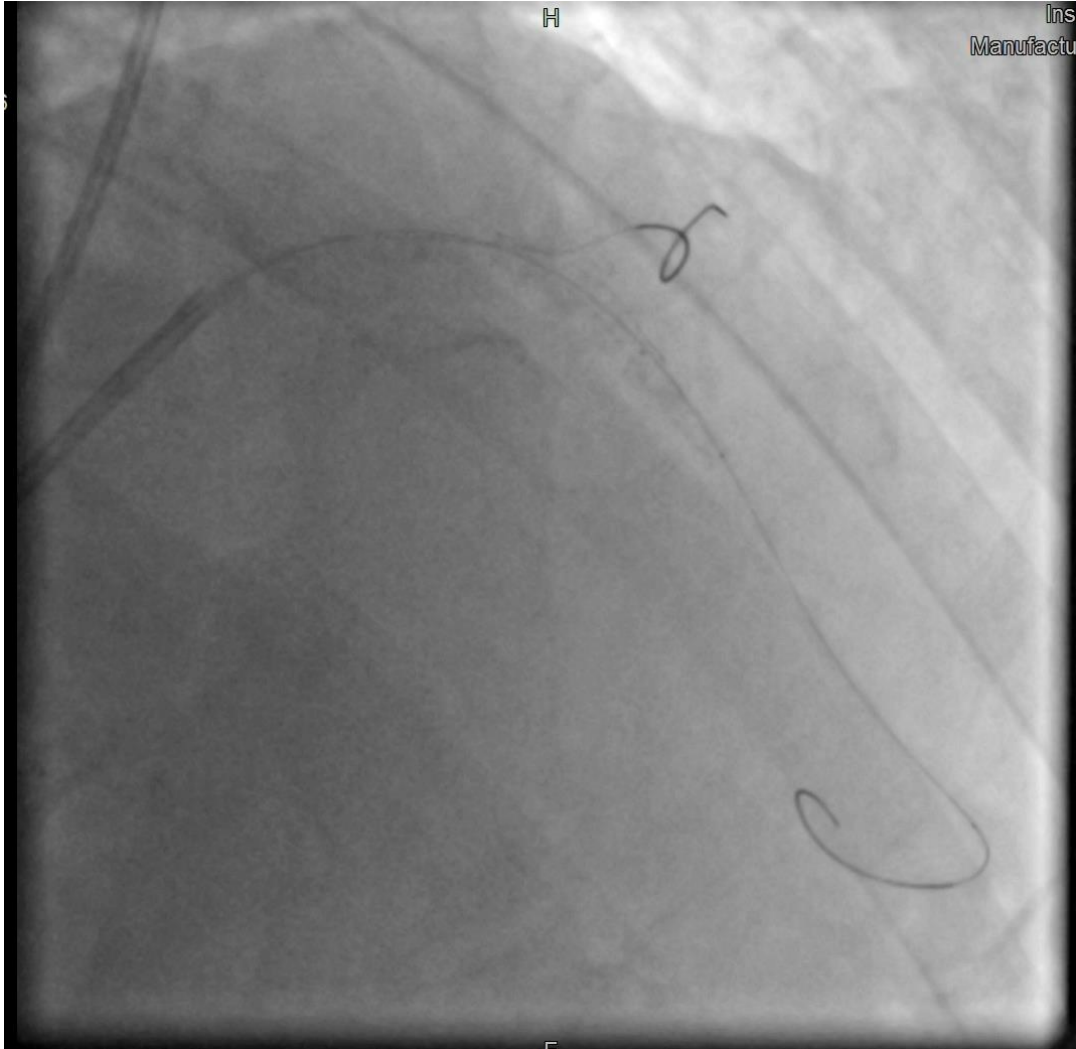


CRE8 EVO 2.0 x 13 mm



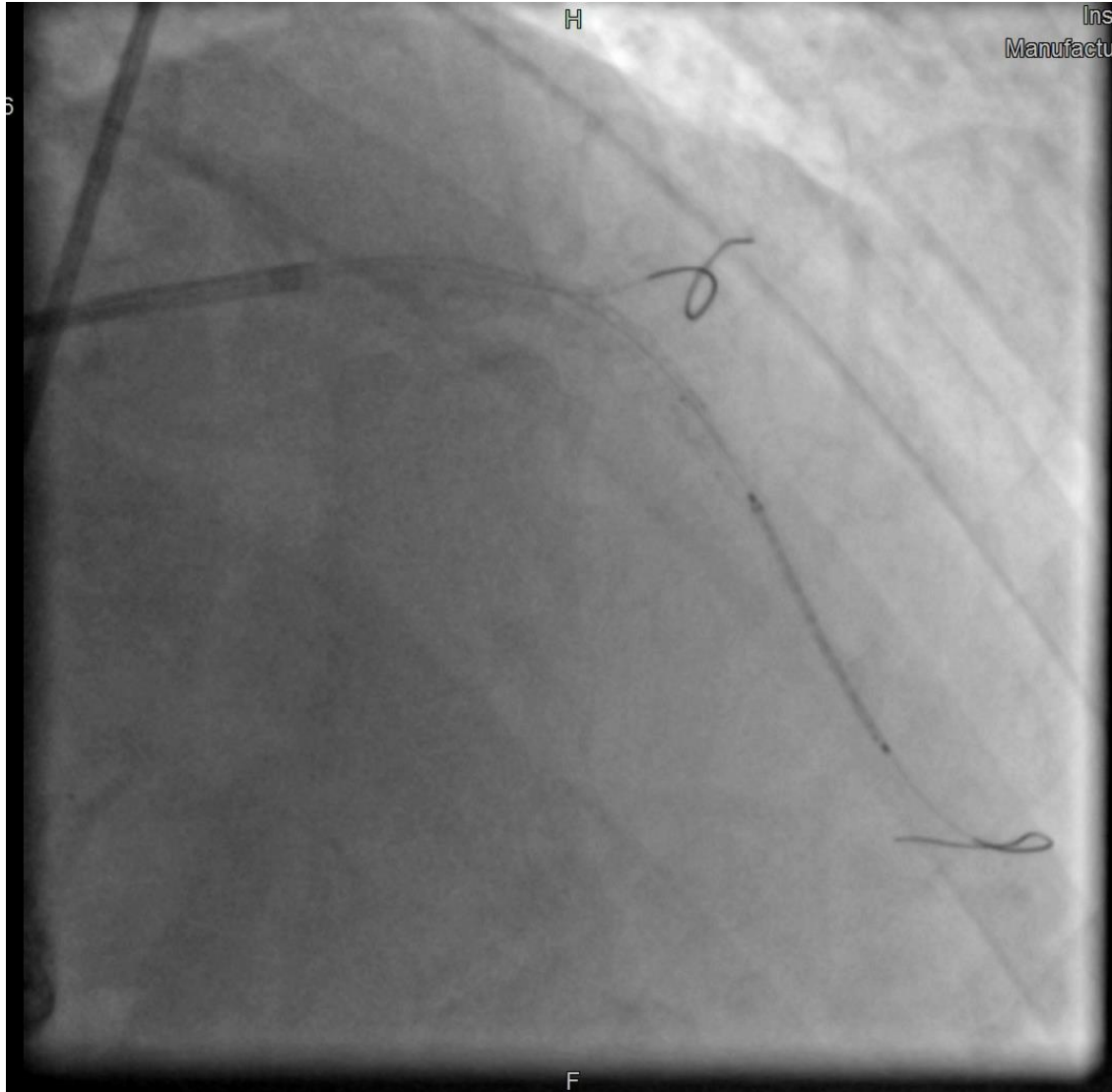
CRE8 EVO 2.75 x 20 mm

LAD CTO PCI

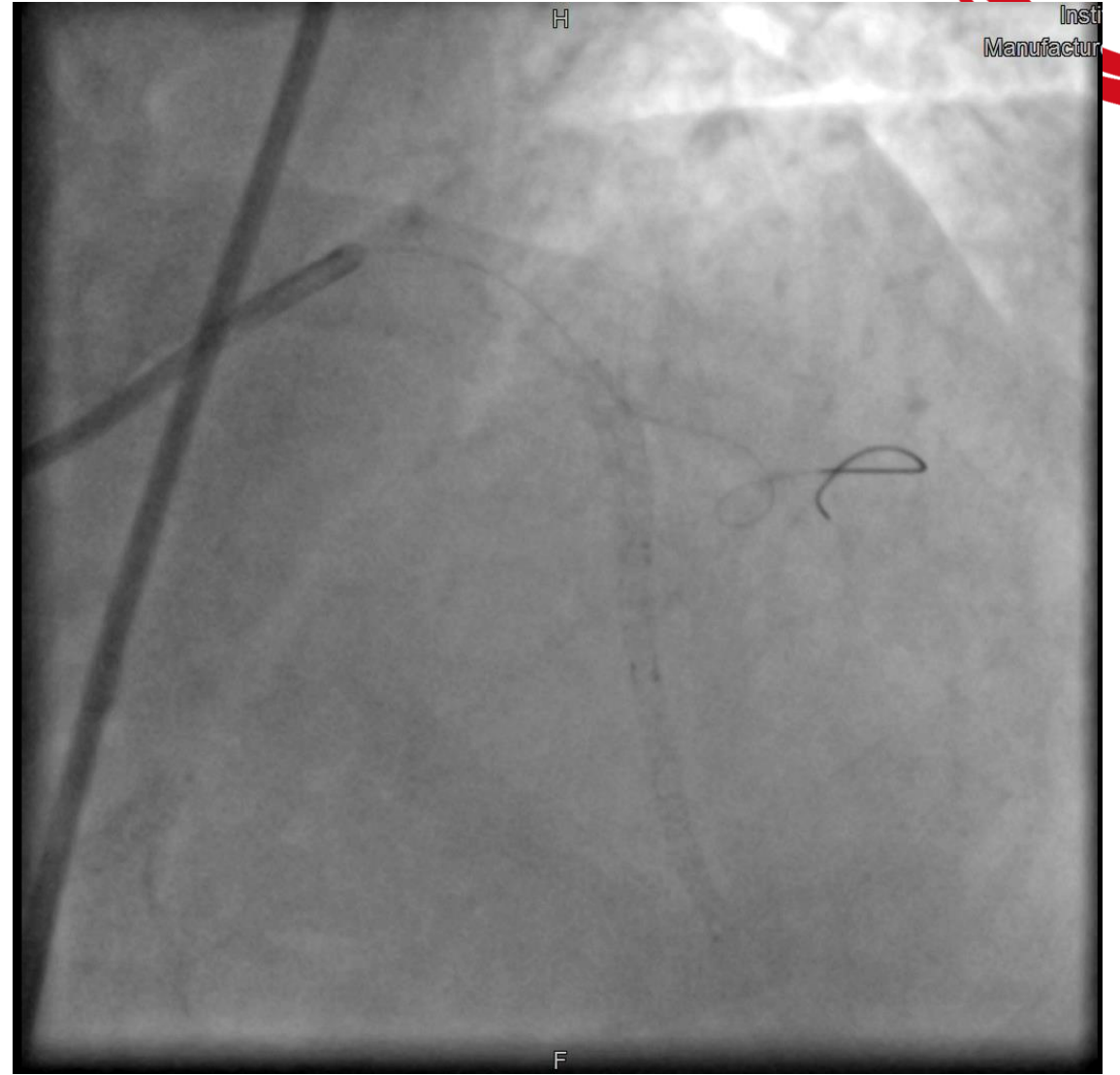


After proximal LAD stenting with 2 CRE8 EVO

LAD CTO PCI



CRE8 EVO 2.0 x 26 mm



Final result

Clinical follow-up

- 7 months after the initial PCI, no recurrent clinical events / hospitalisation
- Angina-free
- DAPT: planned until Aug 2022.