

COMPLEX PCI 2022

Conflicting FFR and QFR in a Patient with Angina Pectoris

DR ALVIN NG CHEE KEONG

CARDIOLOGY

**DIRECTOR, JIREH HEART CENTRE, MOUNT ELIZABETH
NOVENA HOSPITAL, SINGAPORE**

**ADJUNCT ASST PROFESSOR YLL SOM
NATIONAL UNIVERSITY OF SINGAPORE**

Disclosure

- NONE

Discussion Points

- 57 years old male
- Chest discomfort on exertion
- Treated medically for 6 months by Dr X
- CAG after 6 months due to persistent chest discomfort

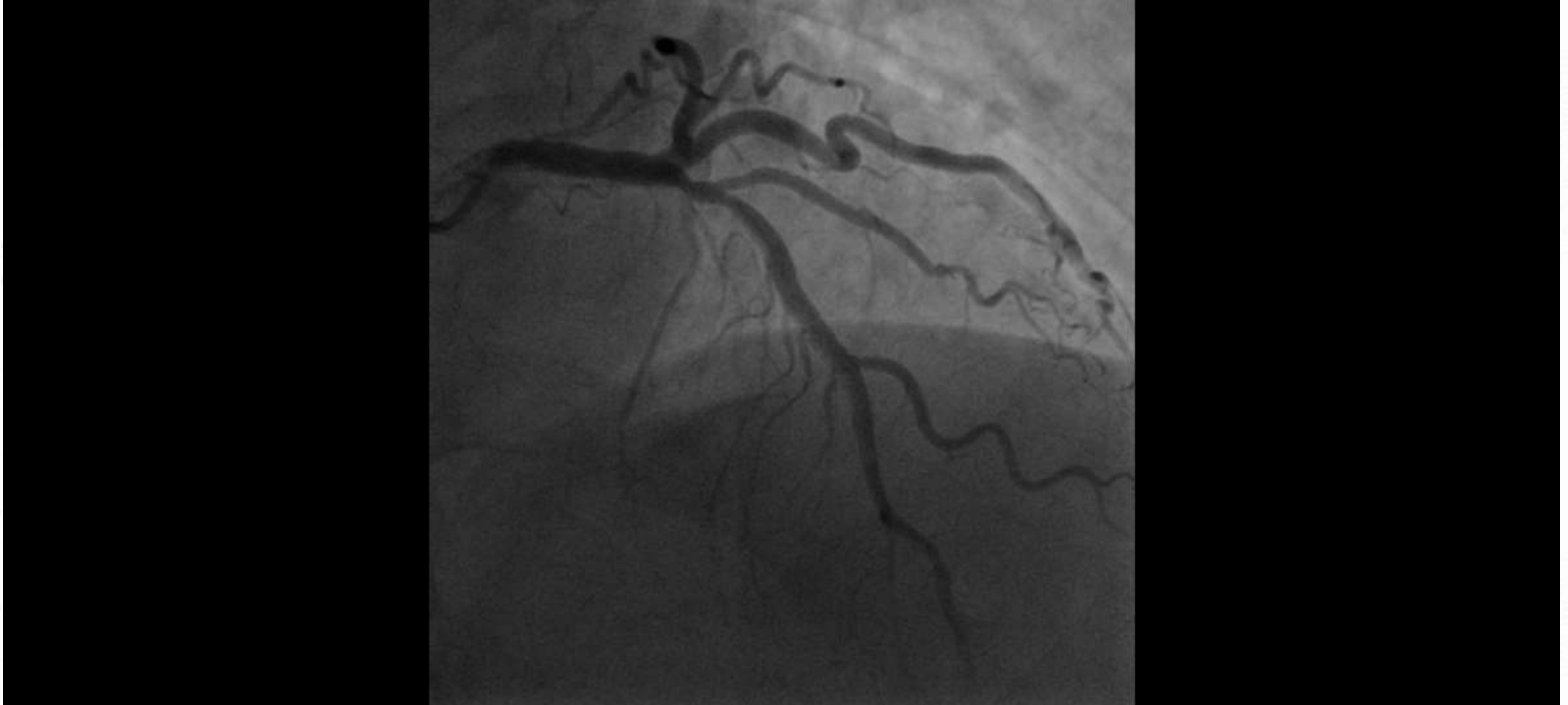
FFR WITH IC ADENOSINE CHALLENGE 0.83 IVUS REPORTED 50% STENOSIS MID SEGMENT WITH ? ULCERATED PLAQUE



POST STENT TO MID LAD, FFR 0.83



POST STENT TO MID LAD, FFR 0.83



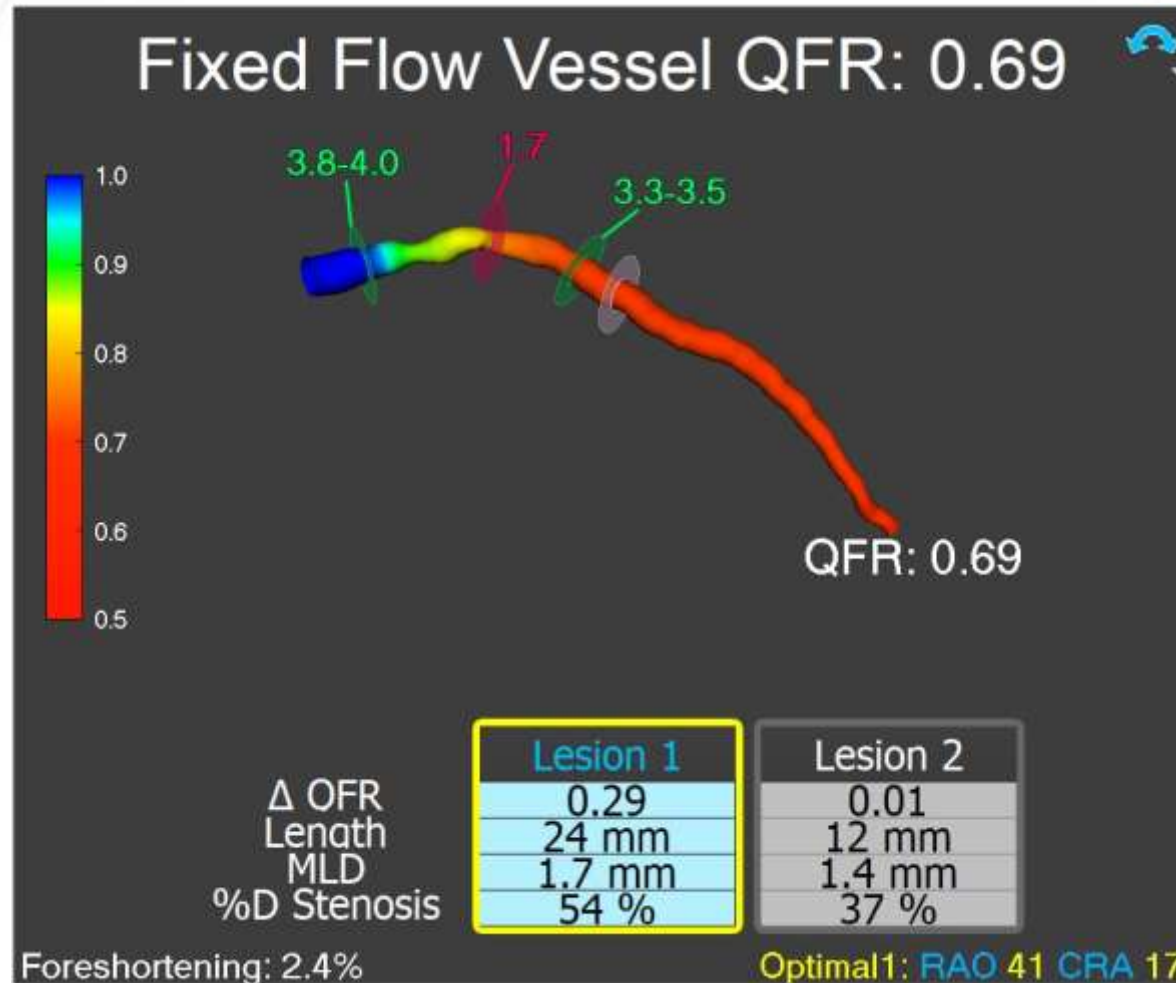
Discussion Points

- Experienced improvement in symptoms
- 1 month later, symptoms recurred
- Came for 2nd opinion
- Repeat CAG (6 months after PCI)

FFR 0.83 after ic adenosine challenge



Discussion Points



Discussion Points

- Symptoms and FFR correlation
- FFR and QFR correlation
- Culprit lesion ? Proximal LAD?
- Recommendations please

Conclusion

- Can physiological testing be consistent and reliable