

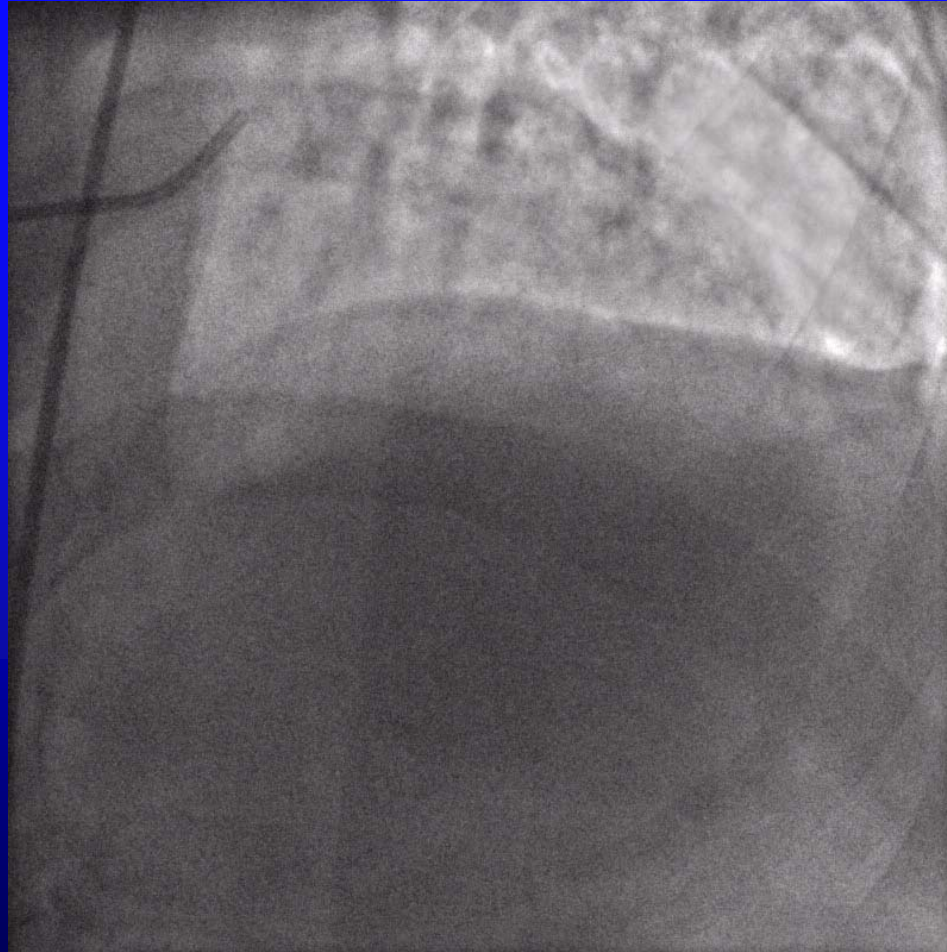
# *L-Main intervention Simplified*

*Maurice Buchbinder, MD*

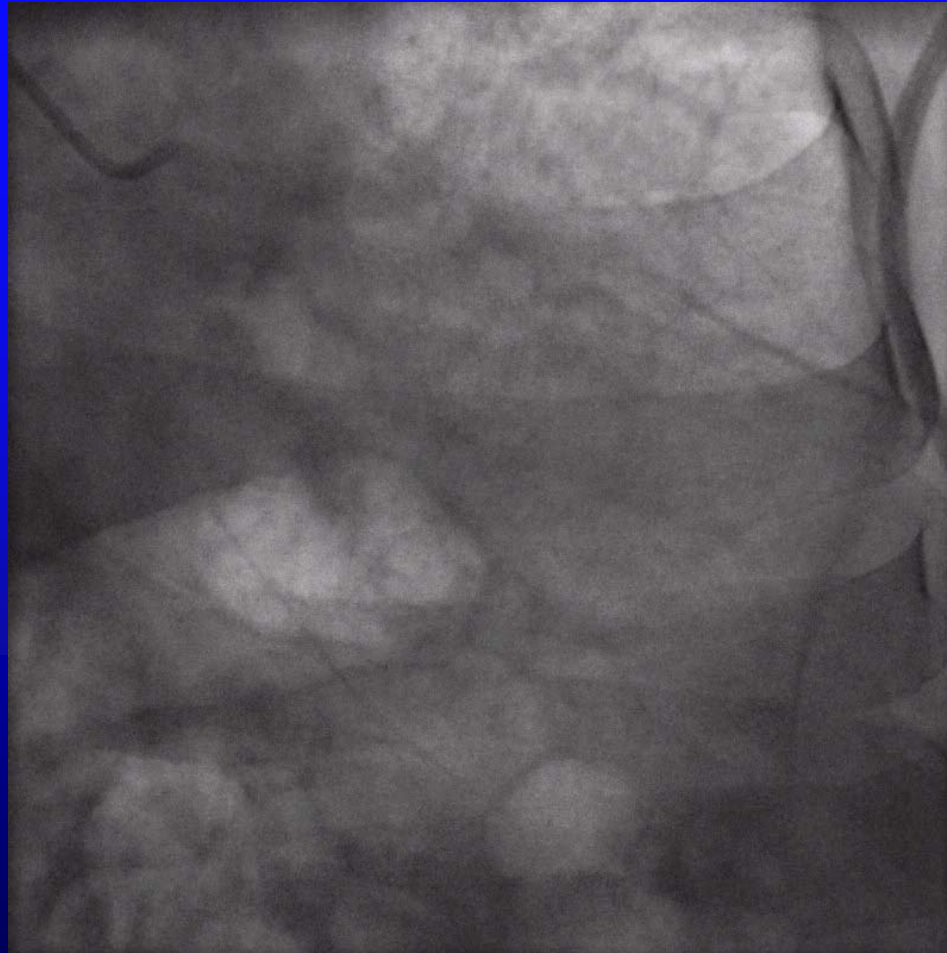
Foundation for Cardiovascular Medicine

La Jolla, CA

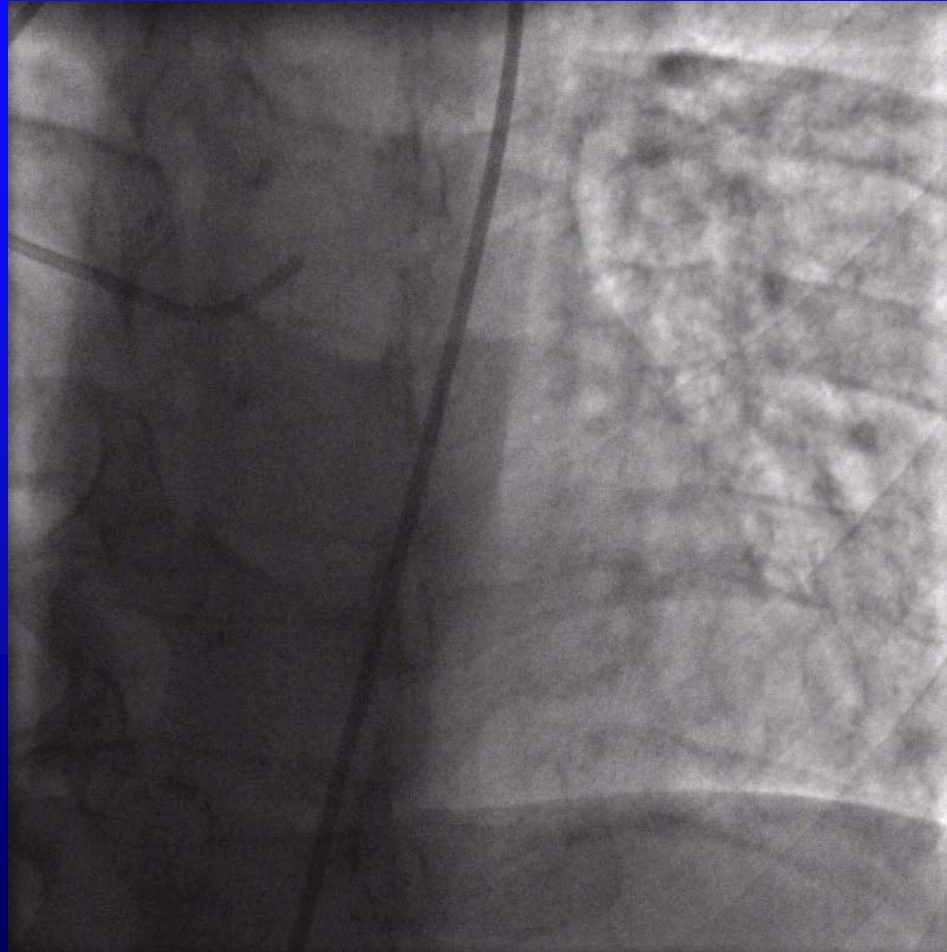
# *72 y.o male with unstable angina*



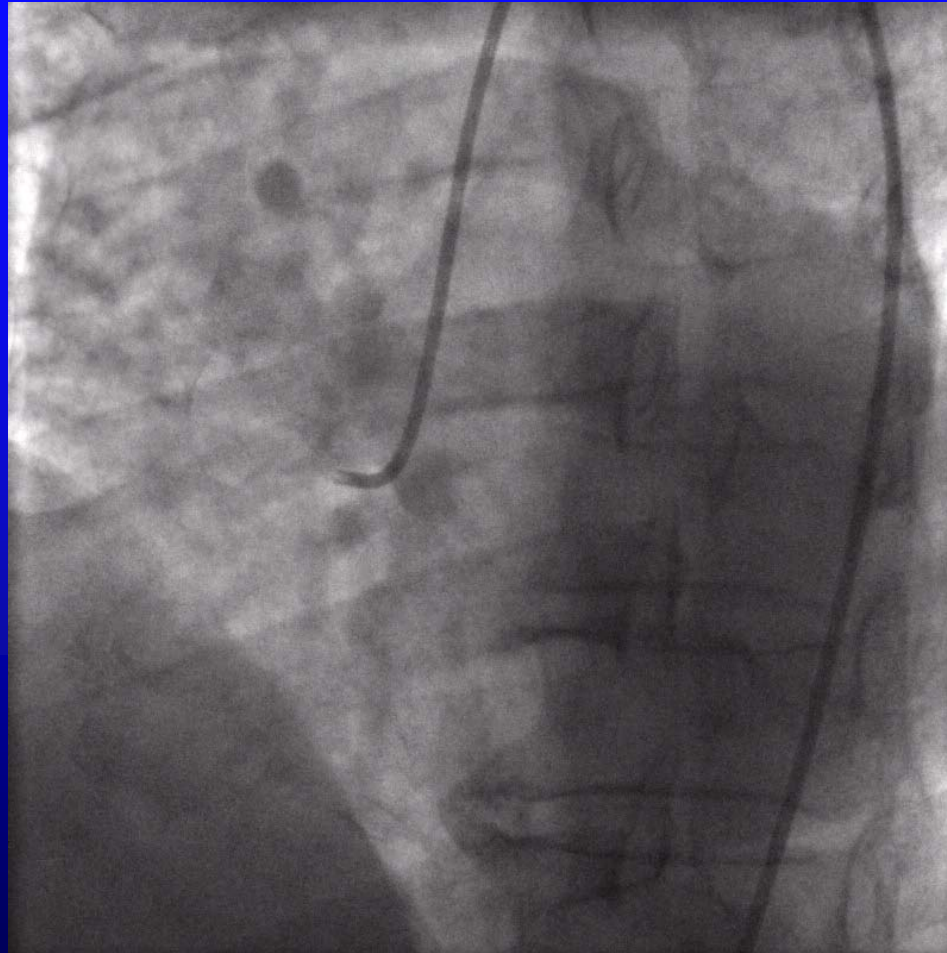
***DIABETIC with significant COPD  
and high SYNTAX score...***



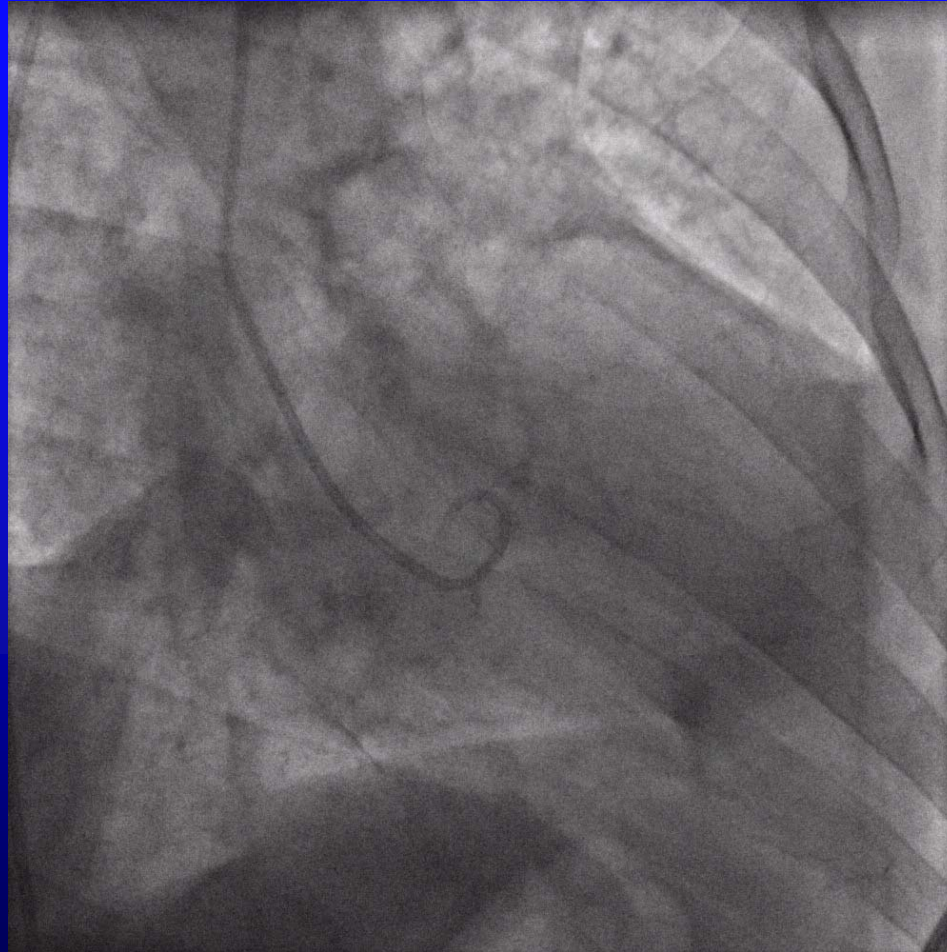
*Mildly Positive stress test  
one month ago !*



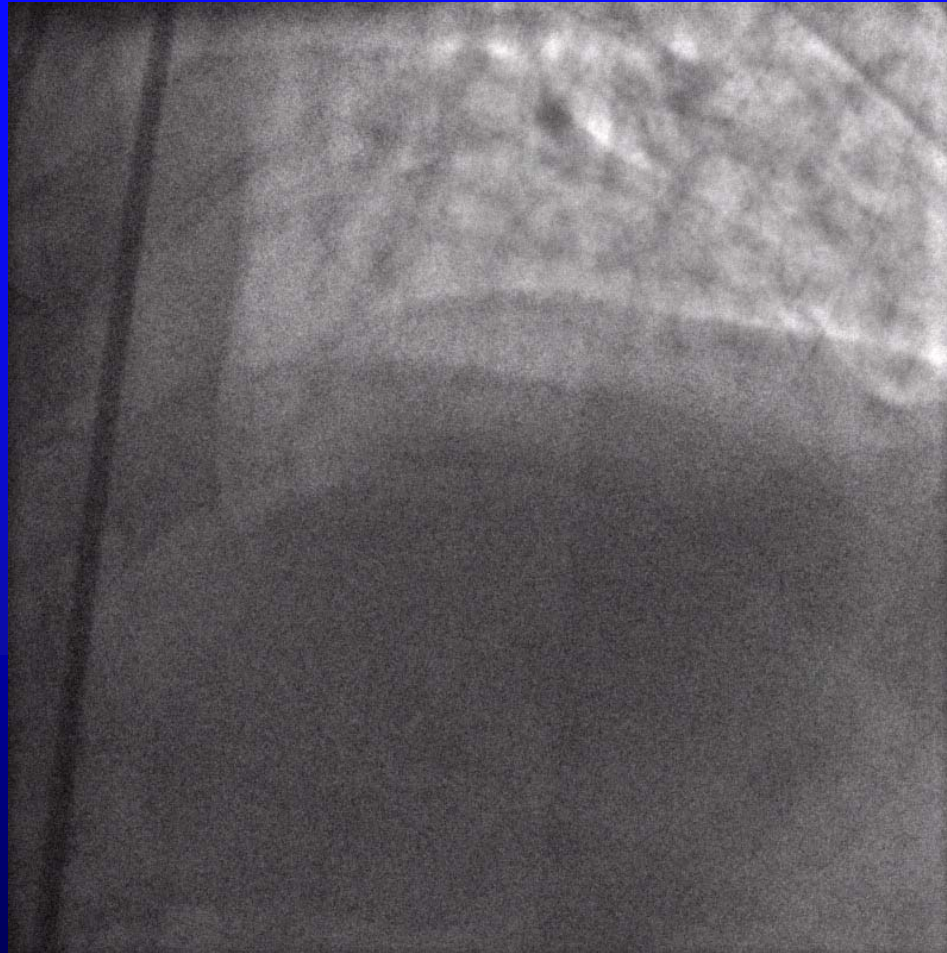
*Not in favor of surgery due to possible  
blood transfusion requirement*



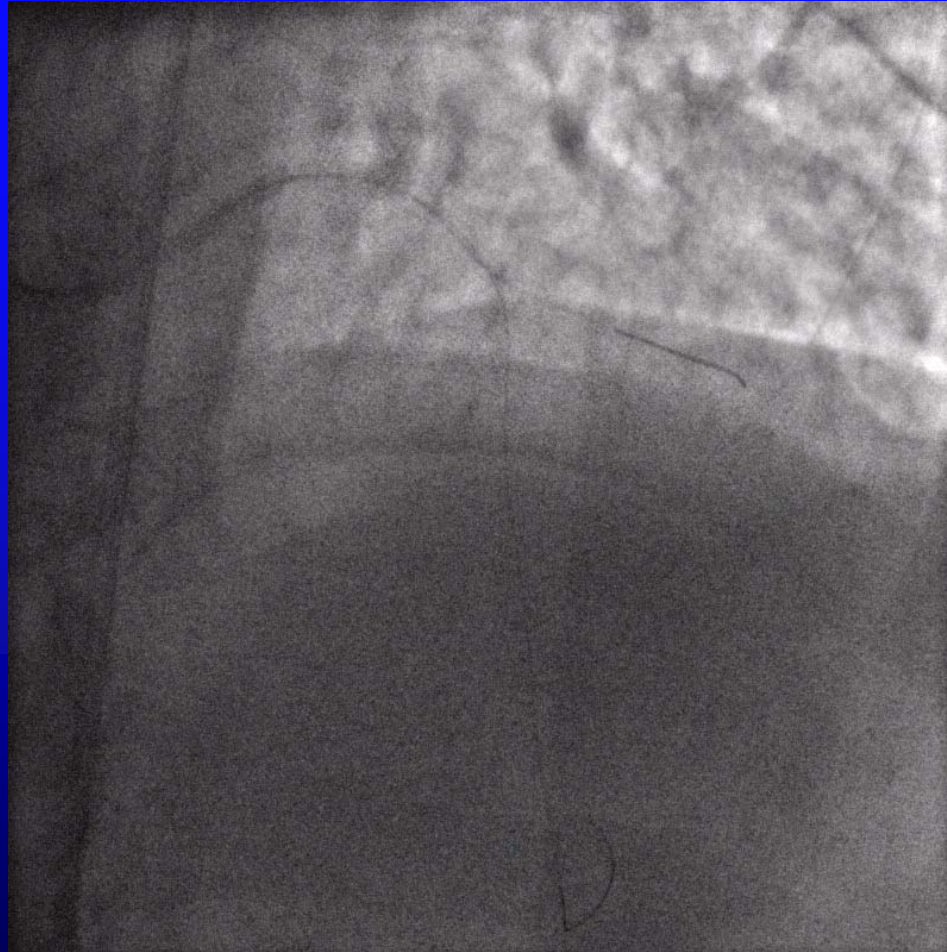
# *Moderate LV dysfunction in anterior distribution ....*



*8Fr guide ,bivalirudin no circulatory support ?!*

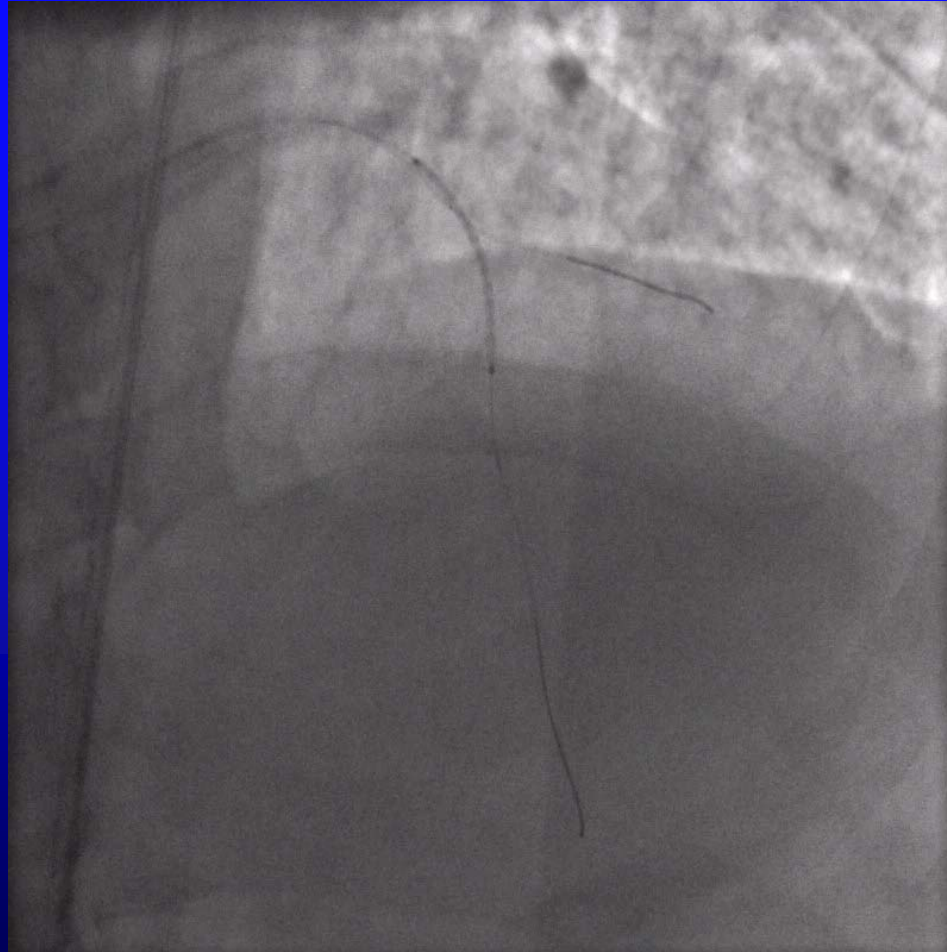


*First multiple wires placed to protect  
the main and side branches*

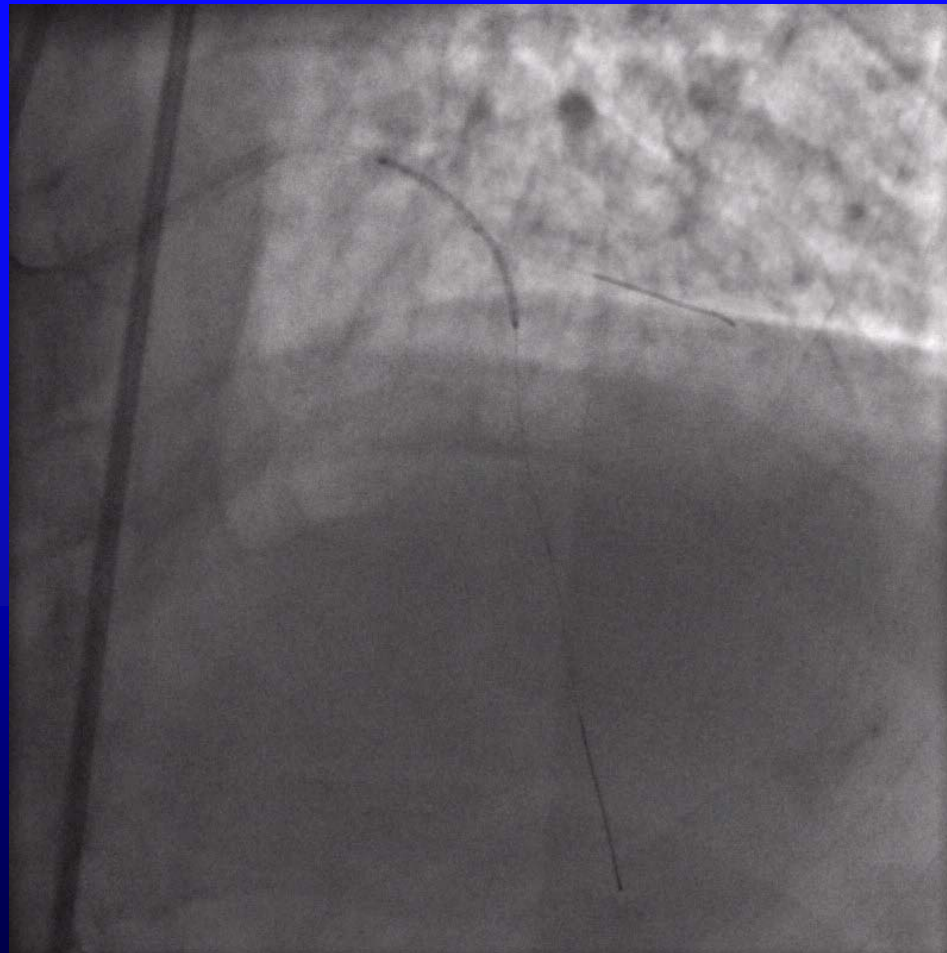




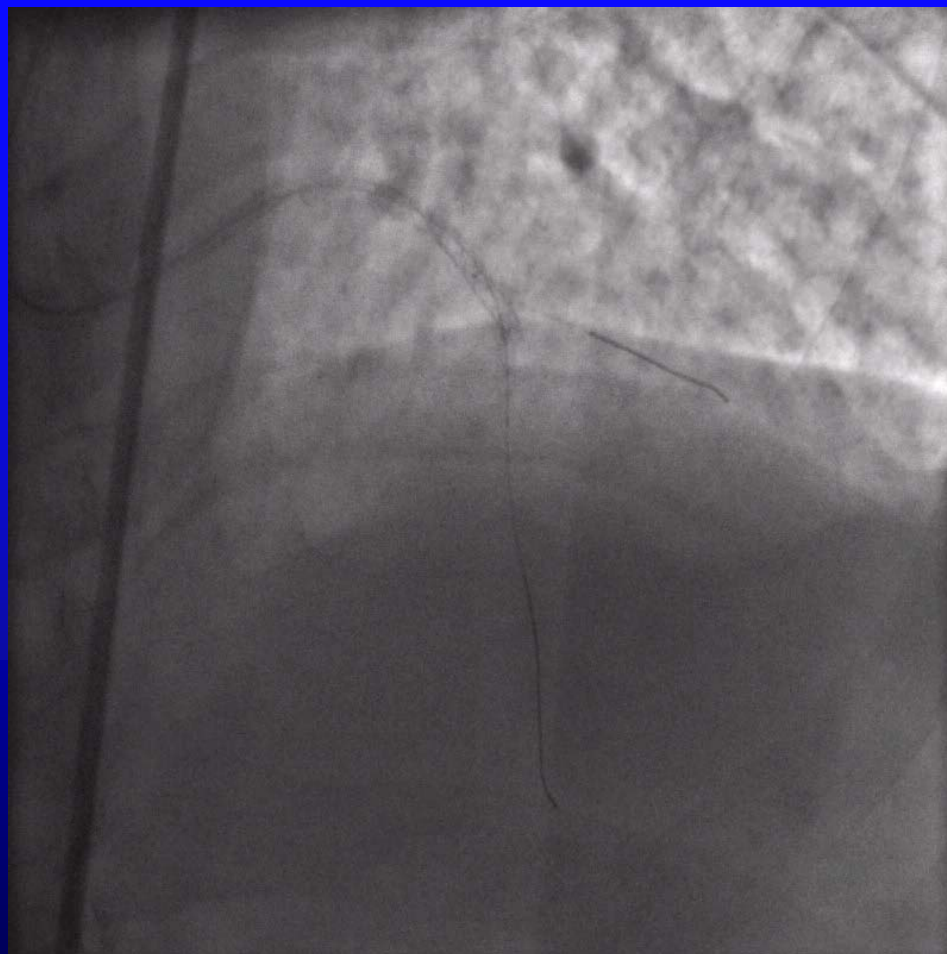
# *After IVUS confirming soft plaque*



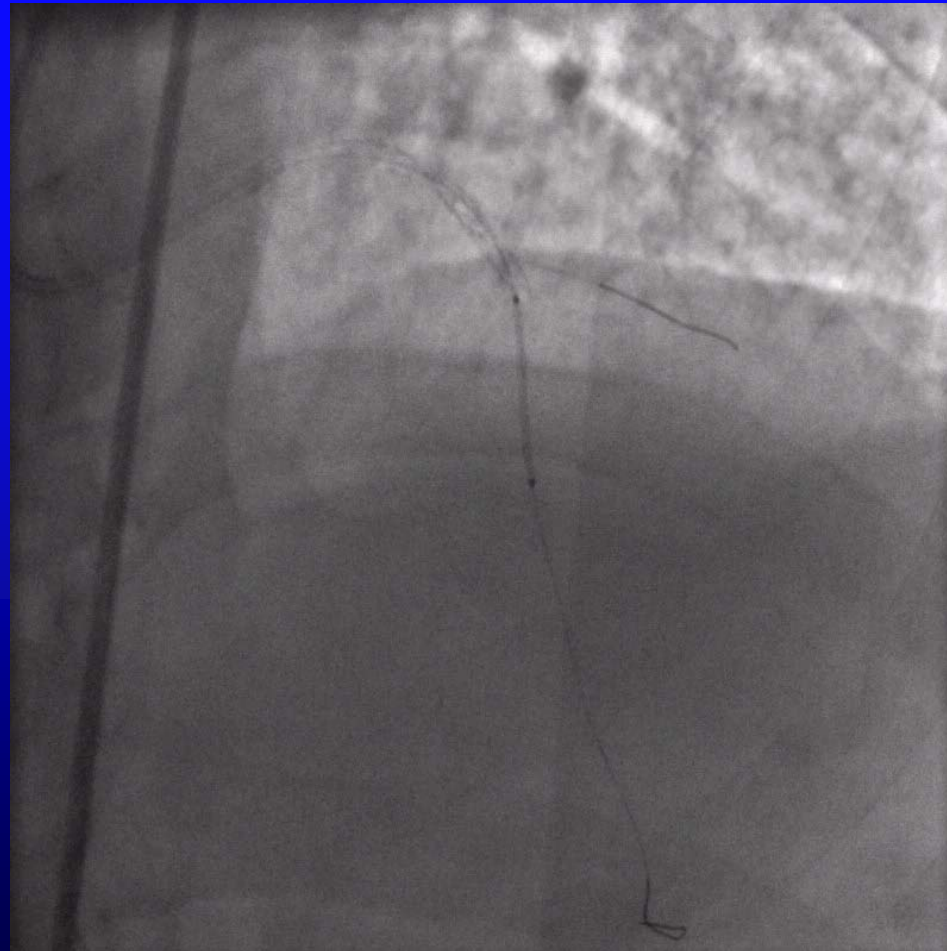
*Primary stenting with One LONG  
stent “Stabilizing” both LM and LAD  
lesions at Once !*



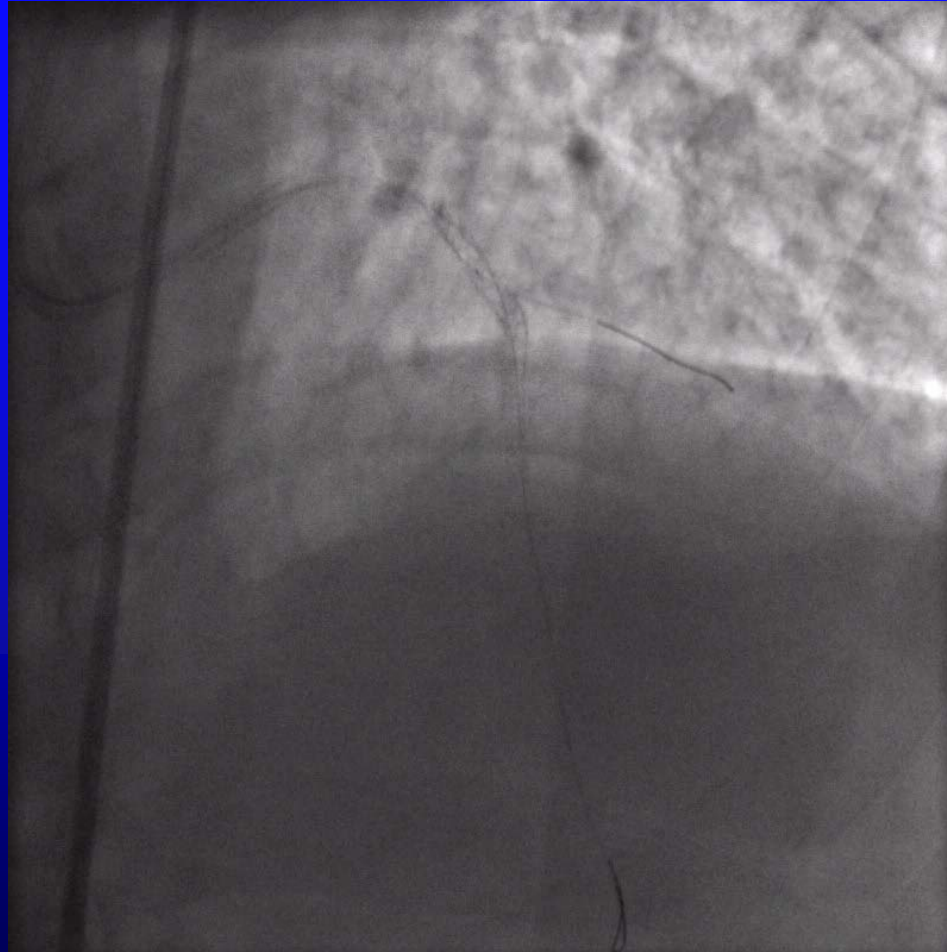
# *L-Main Simplified*



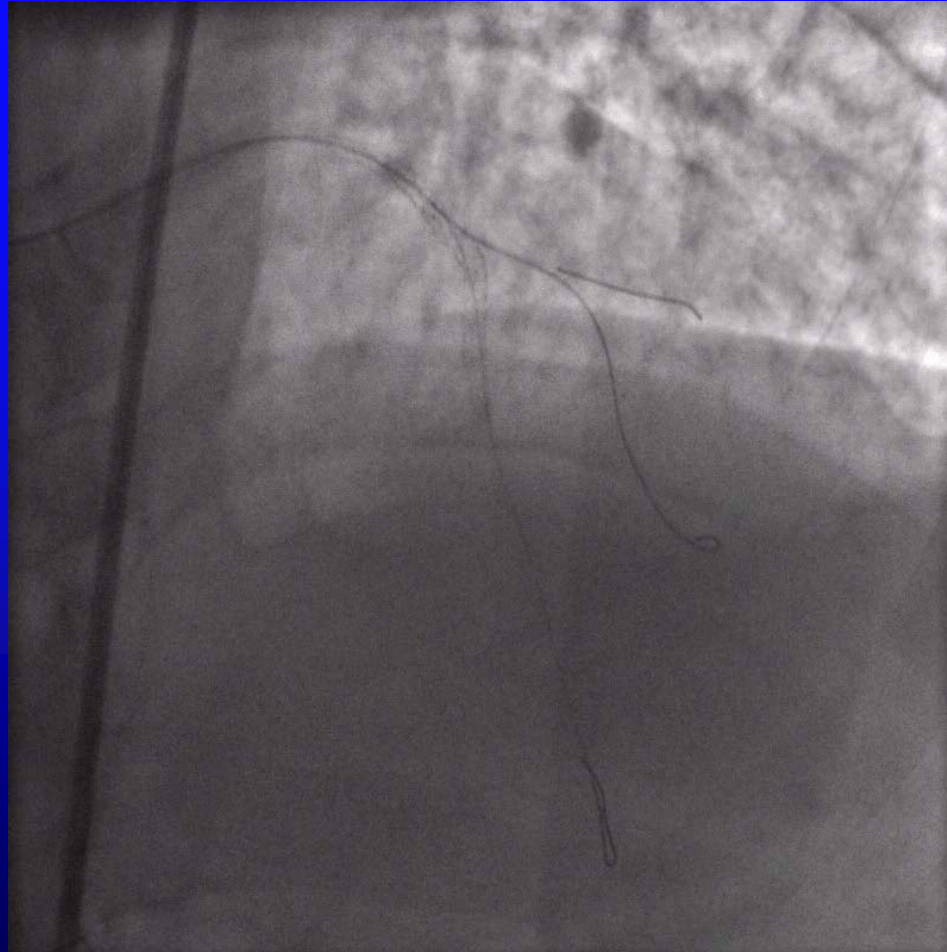
*With flow improved and main lesions treated, distal disease is tackled avoiding side branch os....*



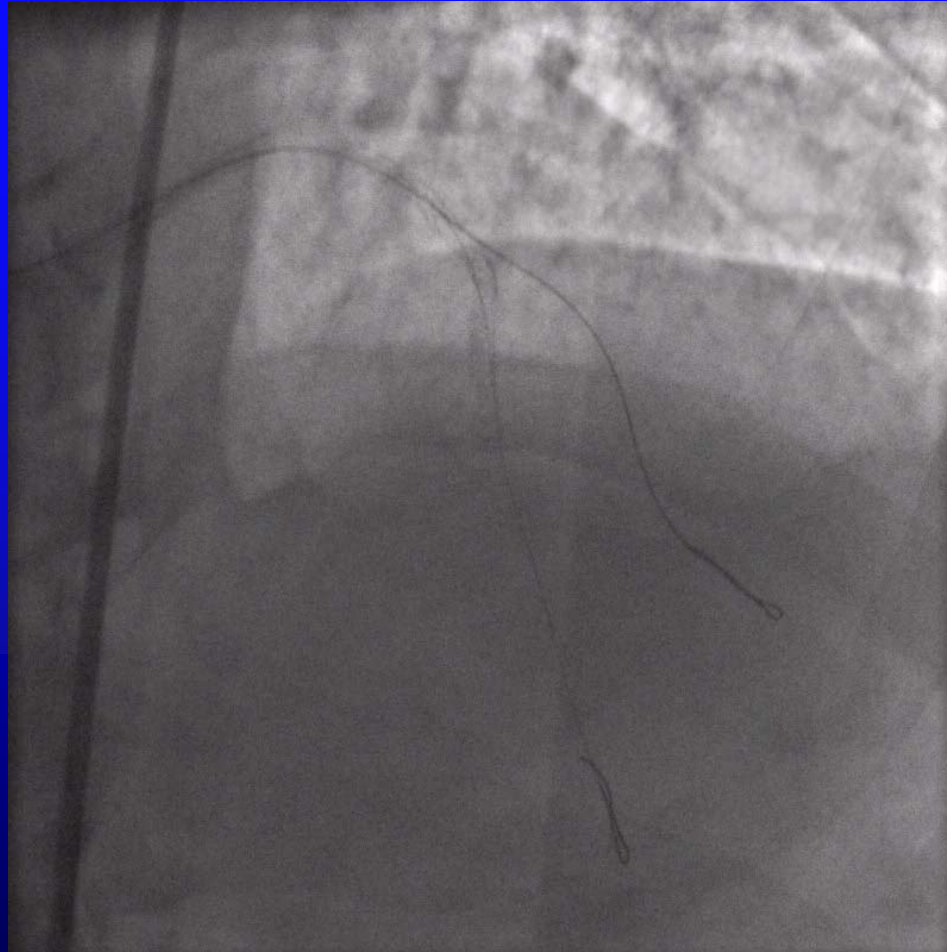
# *L-Main Simplified*



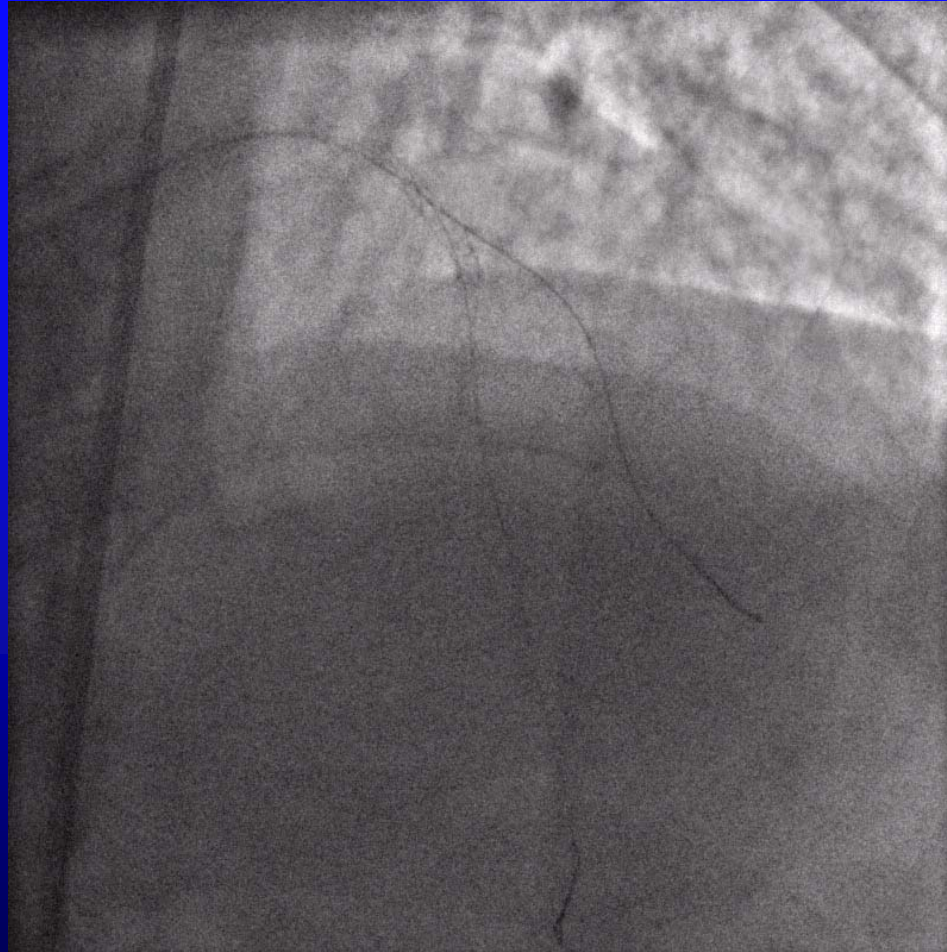
# *Large side branch "rewired"*



*Origin is dilated !!*

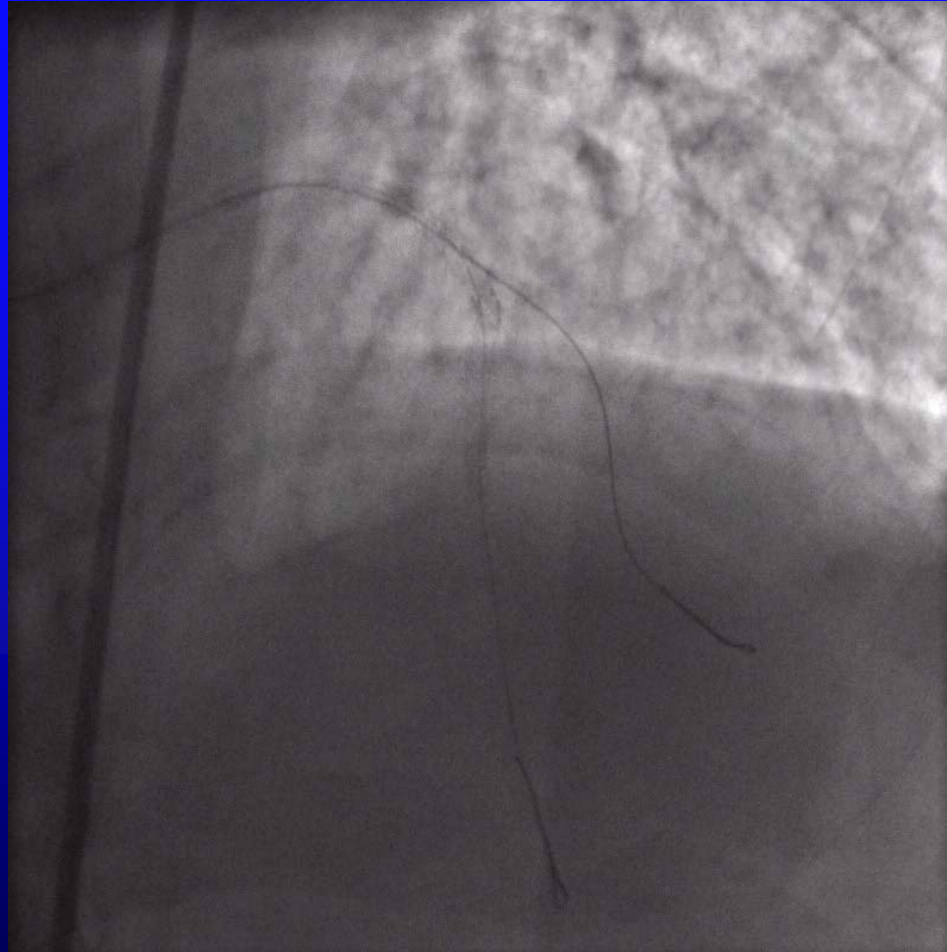


# *Side branch is stented with “tap”*

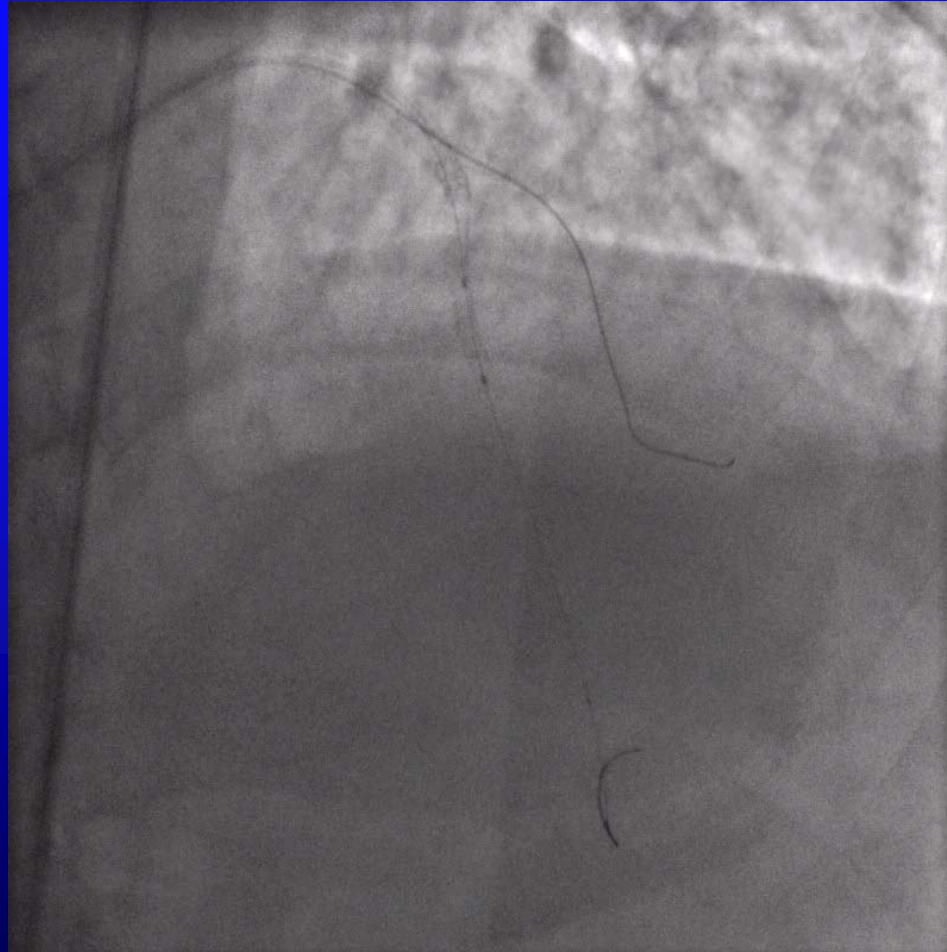




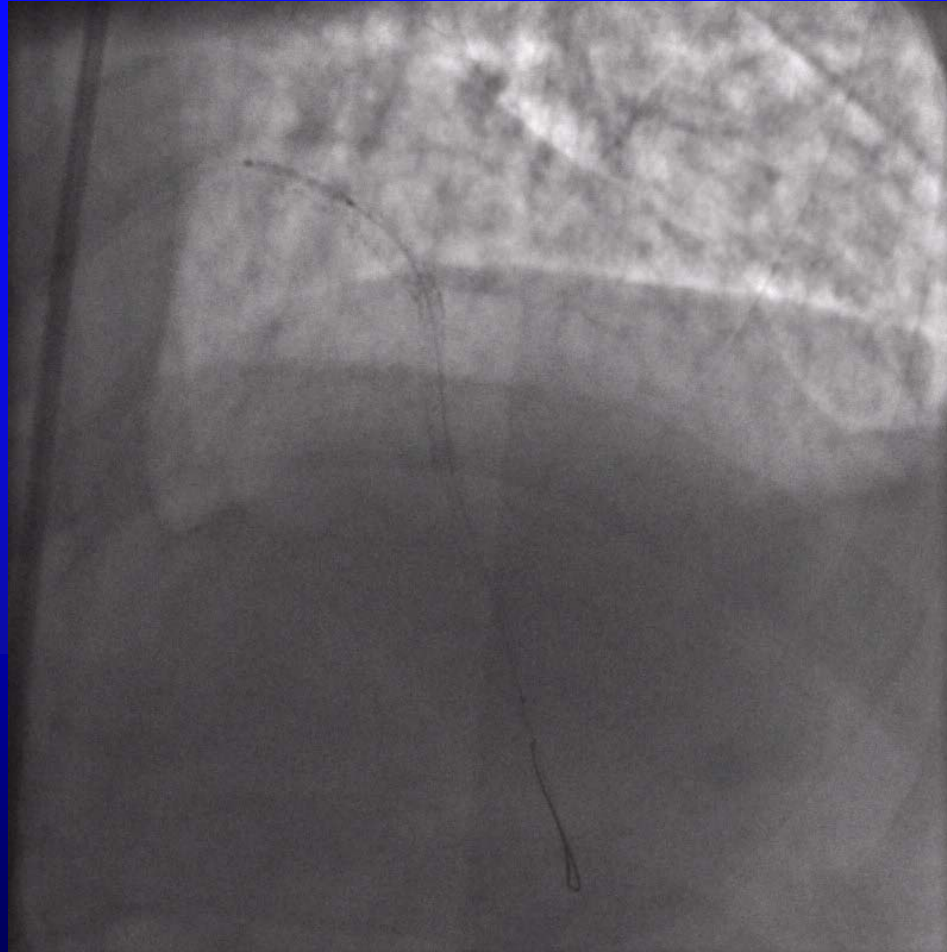
# *L-Main Simplified*



# *Final edge lesions touched up !*



# *L-Main Simplified*



# *L-Main Simplified*

